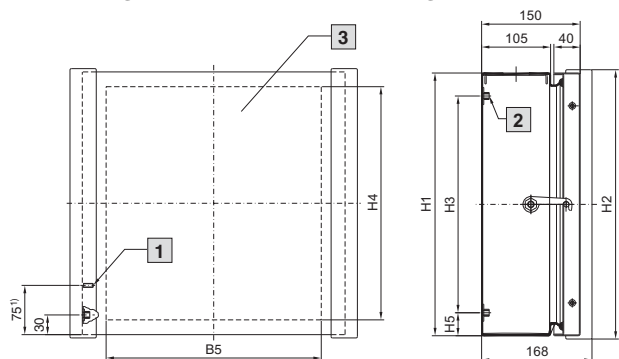
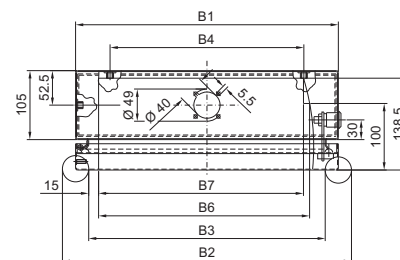


### Betjeningskabinetter med låge



1) Låge

- 1 Svejsemøtrikker M6 x 15
- 2 Svejsemøtrikker M8 x 30
- 3 Maks. udskæring B5 x H4

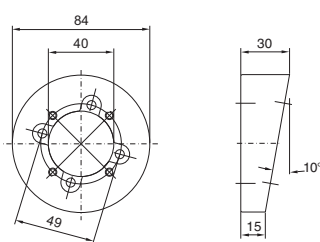


Best.nr. CP	6535.010	6536.010	6538.010	6539.010
Bredde (B1) mm	300	400	400	600
Højde (H1) mm	300	300	400	400
Dybde (T1) mm	150	150	150	150
B2 = Kabinetbredde med gribelister	340	440	440	640
B3 = Indv. mål, front	260	360	360	560
B4 = Afstand montageplademontage	215	295	295	510
B5 = Maks frontudskæring, bredde	225	325	325	525
B6 = Svingbar bredde ved dybde 100 mm	220	320	320	520
B7 = Svingbar bredde ved dybde 118 mm	206	310	310	510
H2 = Kabinethøjde med gribelister	310	310	410	410
H3 = Afstand montageplademontage	250	250	330	330
H4 = Maks. frontudskæring, højde	255	255	355	355
H5 = Afstand bund - montagepladebeslag	25	25	35	35

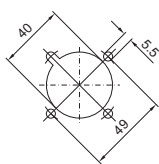
### Bærearmsystem CP 40, rustfrit stål

#### Vinklingsadapter 10° CP 40, rustfrit stål

CP 6664.100

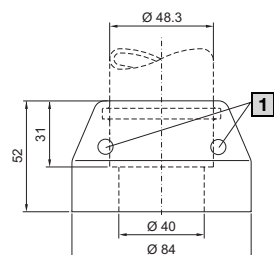


Montageudskæring kabinet



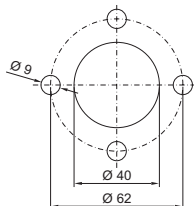
#### Beslag CP 40, rustfrit stål

CP 6664.500

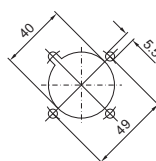


1 Klemkrue

Montageudskæring til standerfod, forned



Montageudskæring, kabinet



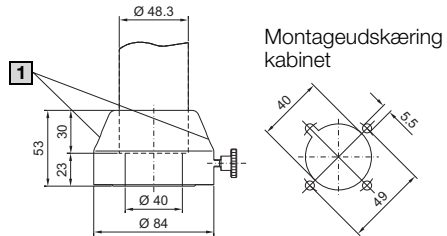
# Skabe

## Rustfrit stål

### Bærearmsystem CP 40, rustfrit stål

#### Kobling CP 40, rustfrit stål

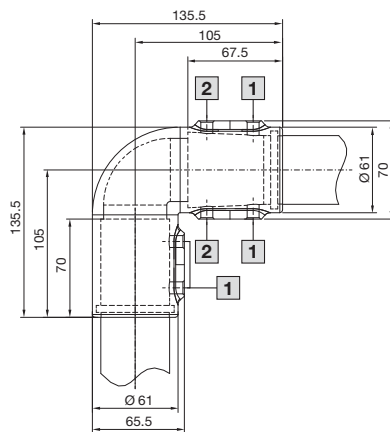
CP 6664.000



1 Klemkrue

### Vinkelstykke 90° CP 40, rustfrit stål

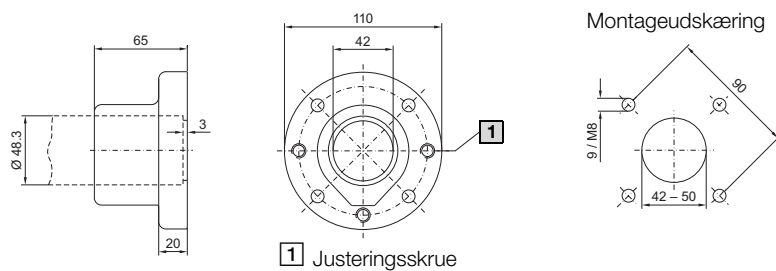
CP 6664.300



- 1 Sikringsskrue
- 2 Justeringsskrue

### Side-/bundbeslag, fast, CP 40, rustfrit stål

CP 6663.000

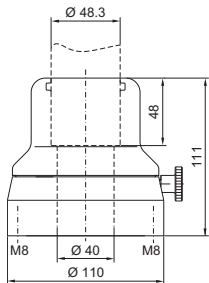


1 Justeringsskrue

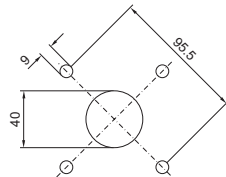
### Bærearmsystem CP 40, rustfrit stål

Gulvbeslag, drejeligt, CP 40, rustfrit stål

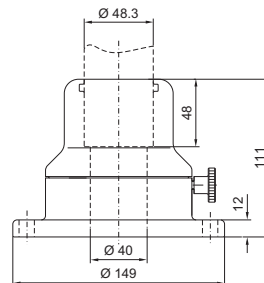
Bagsidebeslag CP 6663.500



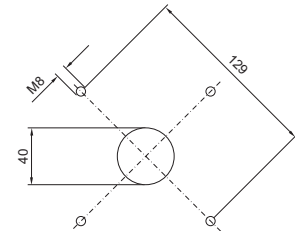
Montageudskæring



Forsidebeslag CP 6663.400

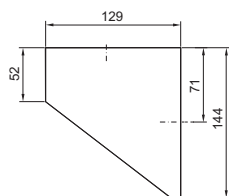


Montageudskæring

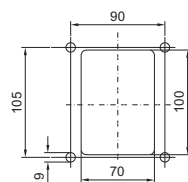


### Vægkonsol CP 40, rustfrit stål

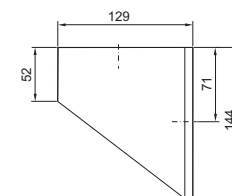
Bagsidebeslag CP 6665.000



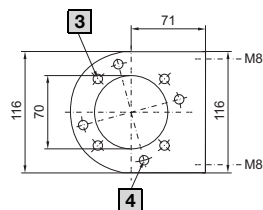
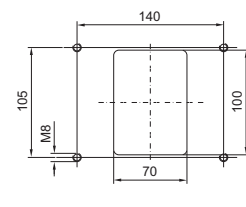
Montageudskæring



Forsidebeslag CP 6665.500



Montageudskæring



**3** Hul til CP 6663.000

**4** Hul til CP 6663.500