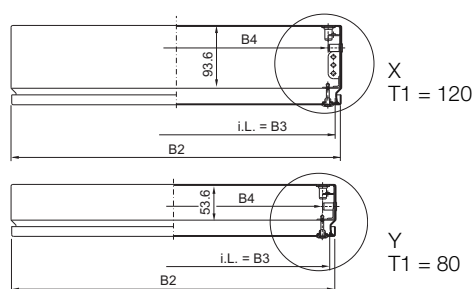
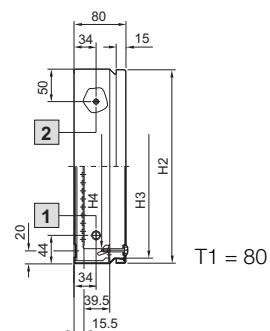
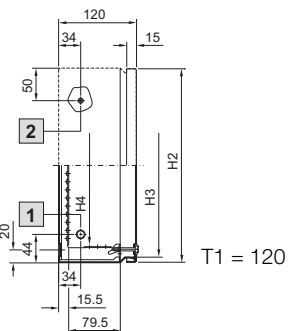
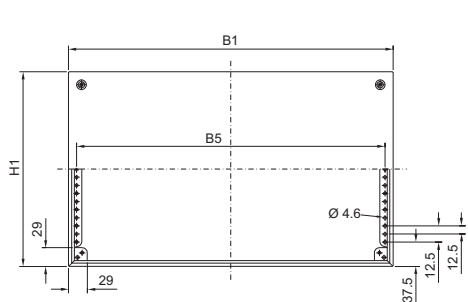


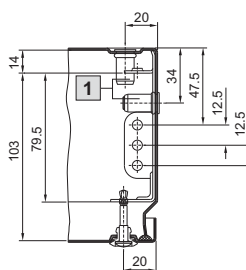
Skabe

Ex-kabinetter KEL

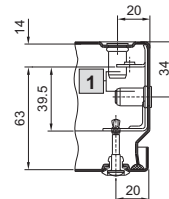
Rustfrit stål, med skruemonteret låg



Detalje X, T1 = 120



Detalje Y, T1 = 80



1 Blindnitemøtrik med indv. gevind M8 x 12

2 PE-bolt M8 x 20

i.L. = Clearance width

Best.nr. KEL	9301.000	9302.000	9303.000	9304.000	9305.000	9306.000
Bredde (B1) mm	150	300	200	300	400	300
Højde (H1) mm	150	150	200	200	200	300
Dybde (T1) mm	80	80	80	80	120	120
B2 = Lågbredde	148	298	198	298	398	298
B3 = Indv. åbningsbredde	132	282	182	282	382	282
B4 = Indv. bredde mellem profillister	109	259	159	259	359	259
B5 = Centerafstand mellem huller i profillister	125	275	175	275	375	275
H2 = Låghøjde	148	148	198	198	198	298
H3 = Indv. åbningshøjde	132	132	182	182	182	282
H4 = Indv. højde mellem profillister	100	100	150	150	150	250