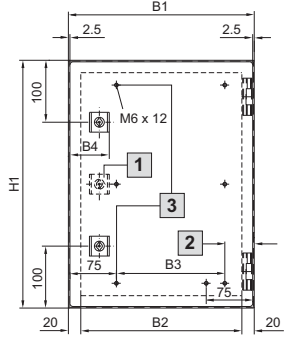
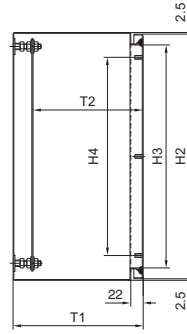


Kompakt panolar AE

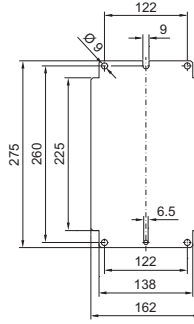
AE 1001.X00 – AE 1016.X00



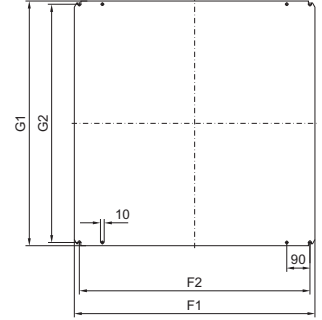
- 1 AE 1001.X00, AE 1002.X00, AE 1003.X00, AE 1004.X00, AE 1005.X00, AE 1006.X00, AE 1009.X00, AE 1011.X00 için yalnız ortada bir pencere ortada bir pencere kilidi dahil ve orta civatalar hariç
- 2 AE 1001.X00, AE 1002.X00 için 50
- 3 AE 1001.X00, AE 1002.X00 'de bulunmaz



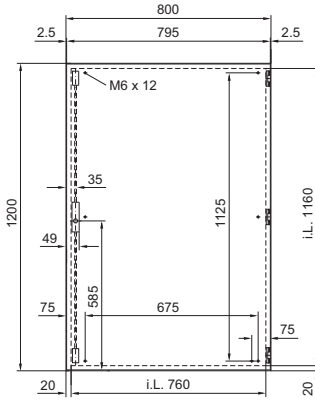
Montaj plakaları
AE 1001.X00,
AE 1002.X00



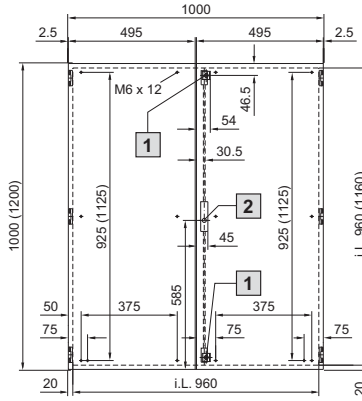
AE 1003.X00 – AE 1016.X00
(AE 1005.500/.600 için montaj
plakalarının montaj konumu 90°
döndürülmüştür)



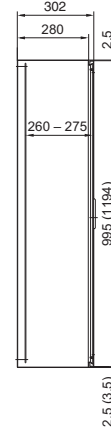
AE 1017.X00



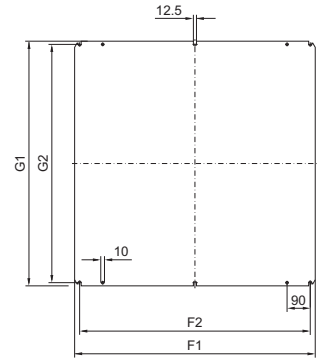
AE 1018.X00 (AE 1019.X00)



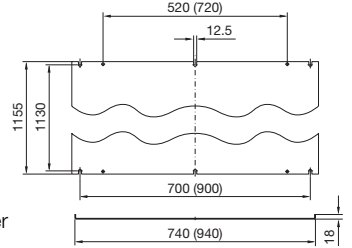
- 1 AE 1018.X00 için kilit
 - 2 AE 1019.X00 için kilit
- i.L. = iç kullanım genişliği



Montaj plakaları
AE 1018.X00



AE 1017.X00 (AE 1019.X00)



AE 1019.X00 için parantez içindeki ölçüler

Model no. AE	Genişlik ölçüleri mm				Yükseklik ölçüleri mm				Derinlik ölçüleri mm		Montaj plakaları mm				Malzeme kalınlığı mm		
	B1	B2	B3	B4	H1	H2	H3	H4	T1	T2	F1	F2	G1	G2	Pano	Kapı	Montaj plakası
1001.X00	200	167	-	56	300	295	274	225	122	100	-	-	-	-	1,25	1,5	2,0
1002.X00	200	167	-	56	300	295	274	225	157	135	-	-	-	-	1,25	1,5	2,0
1003.X00	300	260	175	66	300	295	260	225	212	168 - 184	254	215	275	250	1,38	1,5	2,0
1004.X00	380	340	250	66	300	295	260	225	157	113 - 129	334	295	275	250	1,38	1,5	2,0
1011.X00	380	340	250	66	300	295	260	225	212	168 - 184	334	295	275	250	1,38	1,5	2,0
1005.X00	300	260	175	66	380	375	340	275	212	168 - 184	334	295	275	250	1,38	1,5	2,0
1006.X00	380	340	250	66	380	375	340	275	212	168 - 184	334	295	355	330	1,38	1,5	2,0
1015.X00	400	360	275	66	500	495	460	425	212	168 - 184	354	315	475	450	1,38	1,5	2,0
1007.X00	500	460	375	66	500	495	460	425	212	168 - 184	449	410	470	445	1,38	2,0	2,5
1013.X00	500	460	375	66	500	495	460	425	302	258 - 274	449	410	470	445	1,50	2,0	2,5
1008.X00	380	340	250	66	600	595	560	525	212	168 - 184	334	295	570	545	1,38	1,5	2,5
1009.X00	600	560	475	66	380	375	340	275	212	168 - 184	549	510	355	330	1,38	1,5	2,5
1010.X00	600	560	475	66	600	595	560	525	212	168 - 184	549	510	570	545	1,38	2,0	2,5
1012.X00	600	560	475	66	760	755	720	675	212	168 - 184	549	510	730	705	1,38	2,0	3,0
1014.X00	760	720	625	66	760	755	720	675	302	258 - 274	704	665	730	705	1,50	2,0	3,0
1016.X00	800	760	675	66	1000	955	960	925	302	258 - 274	739	700	955	930	1,50	2,0	3,0
1017.X00	800	-	-	-	1200	-	-	-	302	-	-	-	-	-	1,50	2,0	3,0
1018.X00	1000	-	-	-	1000	-	-	-	302	-	939	900	955	930	1,50	2,0	3,0
1019.X00	1000	-	-	-	1200	-	-	-	302	-	-	-	-	-	1,50	2,0	3,0