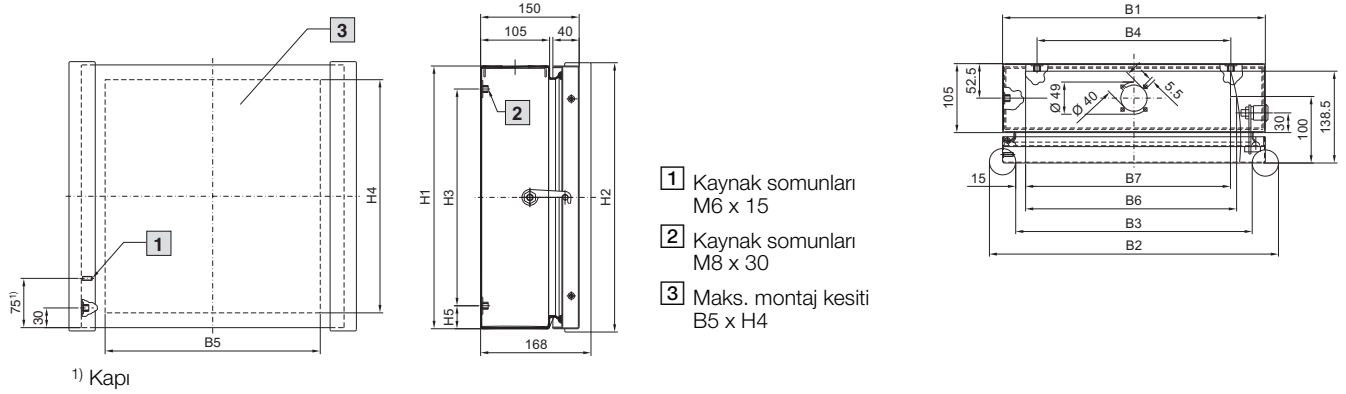


Kapılı kumanda paneli

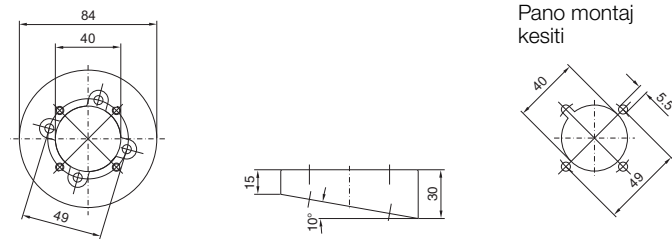


Model no. CP	6535.010	6536.010	6538.010	6539.010
Genişlik (B1) mm	300	400	400	600
Yükseklik (H1) mm	300	300	400	400
Derinlik (T1) mm	150	150	150	150
B2 = Tutamaklı pano genişliği	340	440	440	640
B3 = Net iç boşluk, ön	260	360	360	560
B4 = Montaj plakaları bağlantı mesafesi	215	295	295	510
B5 = Maks. ön montaj kesit genişliği	225	325	325	525
B6 = 100 mm derinlikte döndürülebilir genişlik	220	320	320	520
B7 = 118 mm derinlikte döndürülebilir genişlik	206	310	310	510
H2 = Tutamaklı pano yüksekliği	310	310	410	410
H3 = Montaj plakaları bağlantı mesafesi	250	250	330	330
H4 = Maks. ön montaj kesit yüksekliği	255	255	355	355
H5 = Zemin - montaj plakaları bağlantı mesafesi	25	25	35	35

Taşıyıcı kol sistemi CP 40, paslanmaz çelik

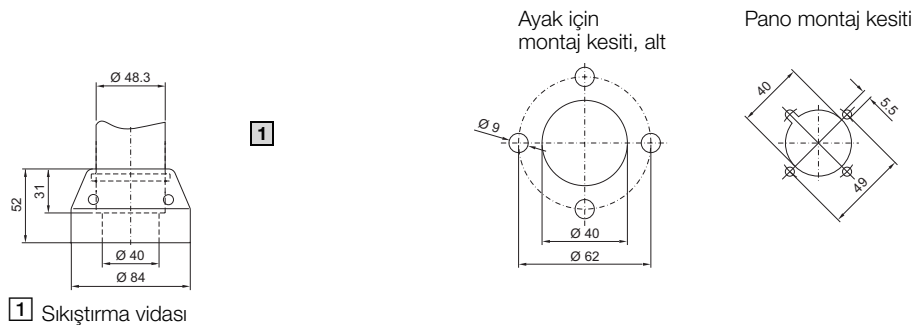
10° eğimli parça CP 40, paslanmaz çelik

CP 6664.100



Pano giriş aparatı CP 40, paslanmaz çelik

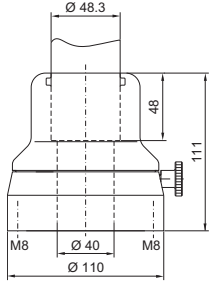
CP 6664.500



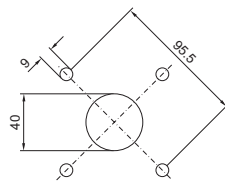
Taşıyıcı kol sistemi CP 40, paslanmaz çelik

Duvar/yer pano giriş aparatı, döner tip, CP 40, paslanmaz çelik

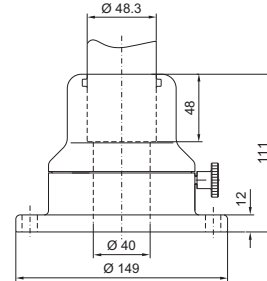
Arka taraf bağlantısı CP 6663.500



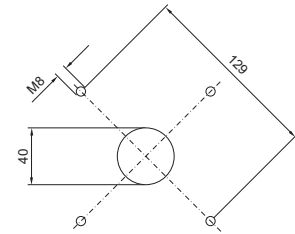
Montaj kesiti



Ön taraf bağlantısı CP 6663.400

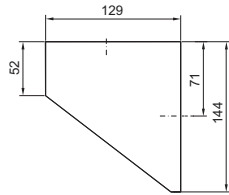


Montaj kesiti

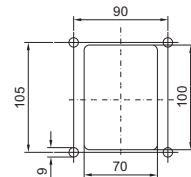


Duvar konsolu CP 40, paslanmaz çelik

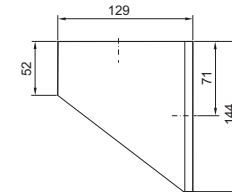
Arka taraf bağlantısı CP 6665.000



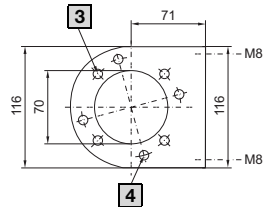
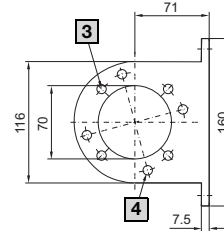
Montaj kesiti



Ön taraf bağlantısı CP 6665.500



Montaj kesiti



3 CP 6663.000 için delik

4 CP 6663.500 için delik