

Rittal – The System.

Faster – better – everywhere.

► CS9750.908 Multifunctional Cabinet MFC 08 Single Wall



ENCLOSURES

POWER DISTRIBUTION

CLIMATE CONTROL

IT INFRASTRUCTURE

SOFTWARE & SERVICES

Rittal – The System.

outdoor cabinets – street cabinets

MFC 08 single wall – CS9750.908

- **application** outdoor single wall outdoor cabinet suitable for outdoor siting
- **field of application** FTTC, FTTH
 - material 2,0 mm Aluminium (AlMg3)
 - surface powder coated (pure polyester)
 - dimension WHD 1000x1500x500 mm, 22 RU
 - protection category IP 55 according to EN 60 529/10.91



- side walls, rear wall and cabinet plinth single wall, 1x door, double walled, mechanical door adjustment (approx. angle of aperture 155°)
- door with 3 pt locking system and dual or single cylinder swinghandle
- plinth for cable management H = 300mm
- prepared to install a climat option HEX or DAC
- rain canopy with air outlet system, H = 130 mm
- 1x ETSI or 19" mounting angle
- bottom plate with grommets
- optional separate area for AC power input and couting



Rittal – The System.

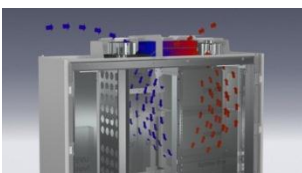
outdoor cabinets – street cabinets

climatisation



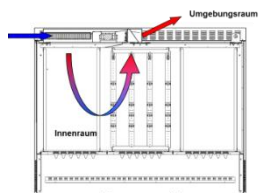
Fan filter solution (option)

Door with fan / filter solution up to 105m³/h
230V 50/60Hz and temperature controller



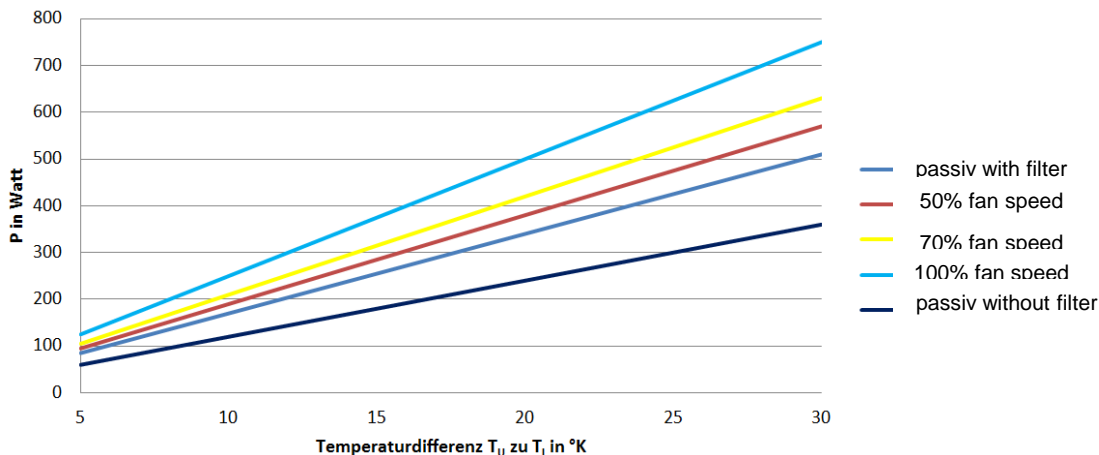
air to air heat exchanger 25 W/K

operating voltage: 48 V DC
temperature range: -20 ° C to +75 ° C
temperature control : NTC-sensor



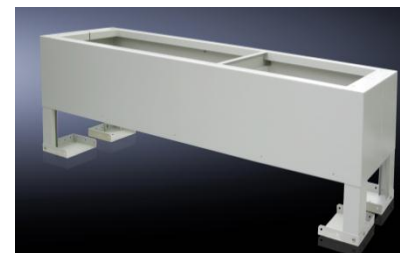
direct air cooling 100 W/K

operating voltage : 48 V DC
temperature range : -33 ° C to +70 ° C
temperature control : Microcontroller



interior installation

- 48 V / DC - power supply unit
- electrical power supply
- heater kit 230 V/ 800 W
- sensors (door alarm, temperature ...)
- lighting



underground plinth

- material stainless steel 1.4016
- surface RAL pur polyester
- dimension CS9765.248 RAL7035
BHT 1000x660x500mm

colours

- pure polyester – UV- resistance
- optional with Anti-Graffiti Effect
- RAL 7035
optional RAL7038, 6009

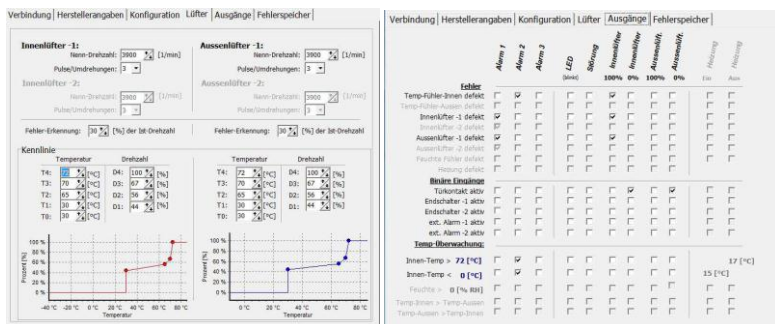
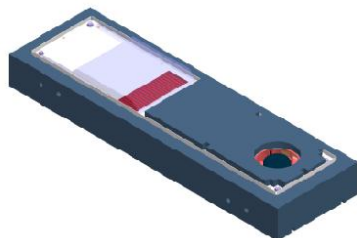


Rittal – The System. outdoor cabinets – street cabinets

CS9760.327 Air / Air Heat Exchanger

Air / Air Heat Exchanger to use at MFC8/12/15/18 outdoor cabinets

Mounting position: Roof
 Dimensions: WxHxD= 930 x 130 x 280 mm
 Spec. cooling capacity: up to 49 W/K at MFC 18
 Supply voltage: 48 V DC
 Temperature range: -33 °C bis +75°C
 Protection class (external- to internal circuit): IP 54
 Protection class (Heat Exchanger to MFC): IP55
 Temperature control: Microcontroller with USB- Connection
 Fan speed curve settable via Software
 Connection: 12pol. Wago connector part of the delivery.
 Material (Housing): Aluminium
 Surface: painted RAL 7035

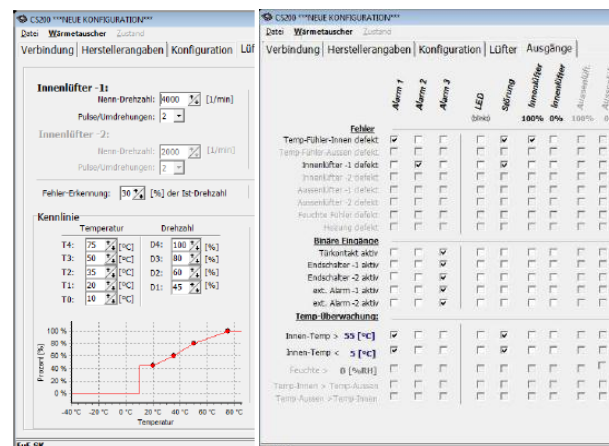
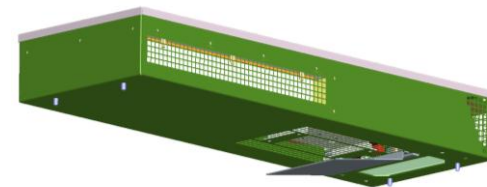


Pict.: Software for configuration

CS9760.342 Direct Air Cooler - DAC

Direct Air Cooling System DAC to use at MFC8/12/15/18 outdoor cabinets

Mounting Position: Roof
 Dimensions: WxHxD= 875 x 125 x 314 mm
 Spec. cooling capacity: up to 100 W/K
 Supply Voltage: 48 V DC
 Temperature range: -33 °C bis +75°C
 Protection class (external- to internal circuit): IP 54
 Protection class (DAC to MFC): IP55
 Temperature control: Microcontroller with USB- Connection
 Fan speed curve and alarm settable via Software
 Connection: 12pol. Wago Connector part of the delivery
 Material (Housing): Aluminium
 Surface: painted RAL 7035



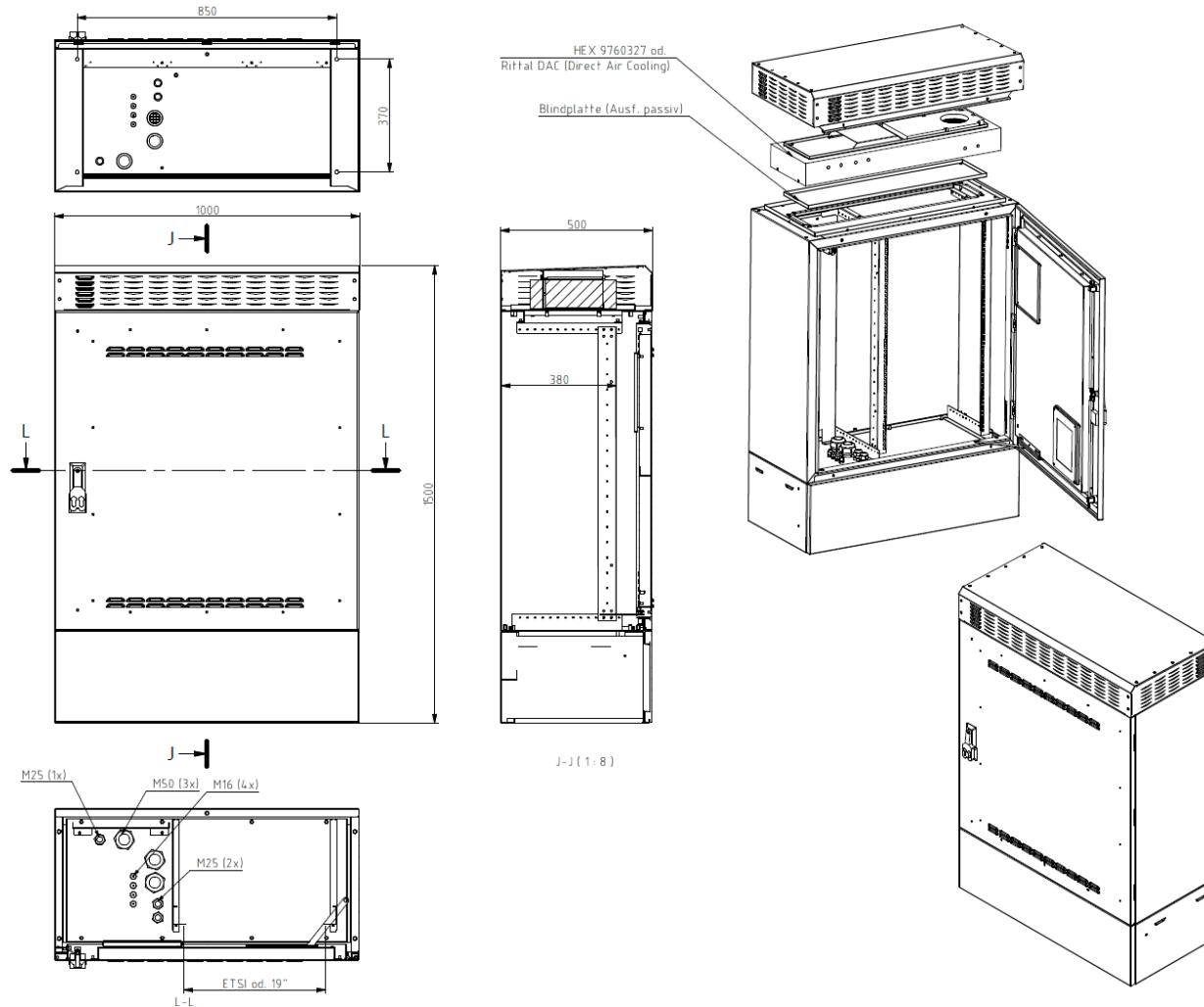
Pict.: Software for configuration



Rittal – The System.

outdoor cabinets – street cabinets

CS9750.908 single wall



ENCLOSURES

POWER DISTRIBUTION

CLIMATE CONTROL

IT INFRASTRUCTURE

SOFTWARE & SERVICES