

Rittal – The System.

Faster – better – everywhere.

► CS9750.918 Multifunctional Cabinet MFC 18



ENCLOSURES

POWER DISTRIBUTION

CLIMATE CONTROL

IT INFRASTRUCTURE

SOFTWARE & SERVICES



Rittal – The System.

outdoor cabinets – street cabinets

MFC 18 – CS9750.918

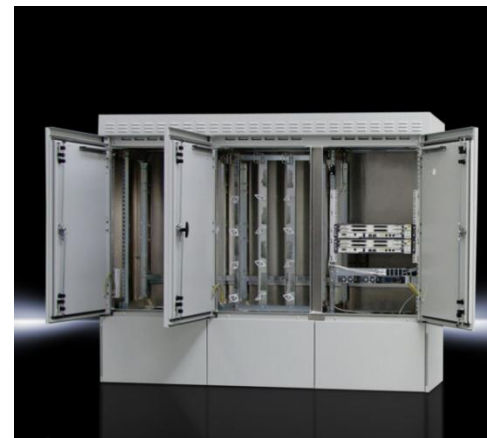
- **application** outdoor
- **field of application** FTTC, FTTH

double walled outdoor cabinet suitable for outdoor siting

material	2,0 mm Aluminium (AlMg3)
surface	powder coated (pure polyester)
dimension	WHD 2000x1500x500 mm, 22 RU
protection category	IP 55 according to EN 60 529/10.91
protection against burglar	up to RC 2 (resistance class), according to DIN EN V 1630: 1999-04



- side panels, rear panel, 3x door, double walled, mechanical door adjustment (approx. angle of aperture 155°)
- doors with 3 pt locking system and dual or single cylinder swinghandle
- plinth for cable management H = 300mm
- prepared to install two climat options HEX or DAC
- rain canopy with air outlet system, H = 130 mm
- 3x ETSI or 19" mounting angle
- bottom plate with grommets
- 2x center bars welded



Rittal – The System.

outdoor cabinets – street cabinets

MFC 18 – CS9750.918

- **application** outdoor
- **field of application** FTTC, FTTH

double walled outdoor cabinet suitable for outdoor siting

material	2,0 mm Aluminium (AlMg3)
surface	powder coated (pure polyester)
dimension	WHD 2000x1500x500 mm, 22 RU
protection category	IP 55 according to EN 60 529/10.91
protection against burglar	up to RC 2 (resistance class), according to DIN EN V 1630: 1999-04

- side panels, rear panel, 3x door, double walled, mechanical door adjustment (approx. angel of aperture 155°)
- doors with 3 pt locking system and dual or single cylinder swinghandle
- 2x centre bars, 1x welded, 1x removeable
- plinth for cable-, pipe- and fibermanagement H = 300mm
- rain canopy with air outlet system, H = 130 mm
- 2x ETSI or 19" mounting angle, 1x Mounting plate for copper MDF
- separate area for AC power input and couting
- bottom plate with grommets

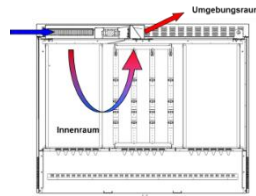
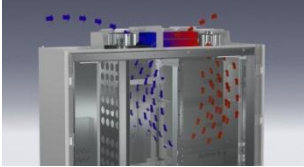
- ▶ exemplary Configuration
- ▶ Connect Com ODF with up to 720 LC/LCAPC/SC/SCAPC or 360 E2000APC
- ▶ fiber management system



Rittal – The System.

outdoor cabinets – street cabinets

climatisation

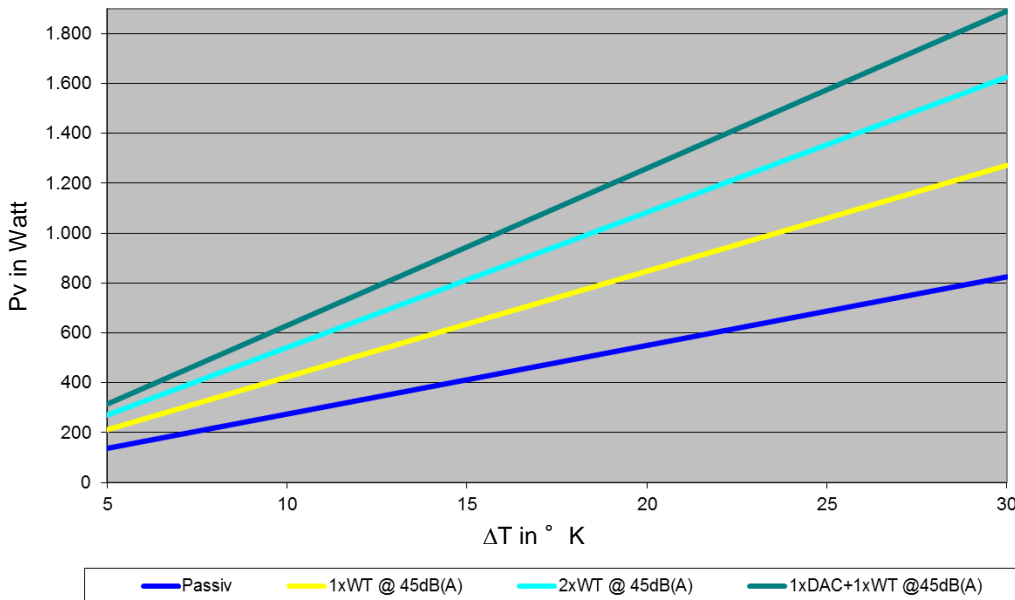


air to air heat exchanger 25 W/K

operating voltage: 48 V DC
 temperature range: -20 ° C to +75° C
 temperature control : NTC-sensor

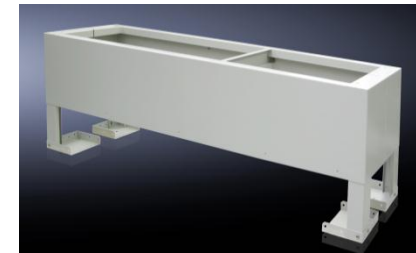
direct air cooling 100 W/K

operating voltage : 48 V DC
 temperature range : -33 ° C to +70° C
 temperature control : Microcontroller



interior installation

- 48 V / DC - power supply unit
- electrical power supply
- heater kit 230 V/ 800 W
- sensors (door alarm, temperature ...)
- lighting



underground plinth

- material stainless steel 1.4016
- surface RAL pur polyester
- dimension CS9765.250 RAL7035
BHT 2000x660x500mm

colours

- pure polyester – UV- resistance
- optional with Anti-Graffiti Effect
- RAL 7035
optional RAL7038, 6009

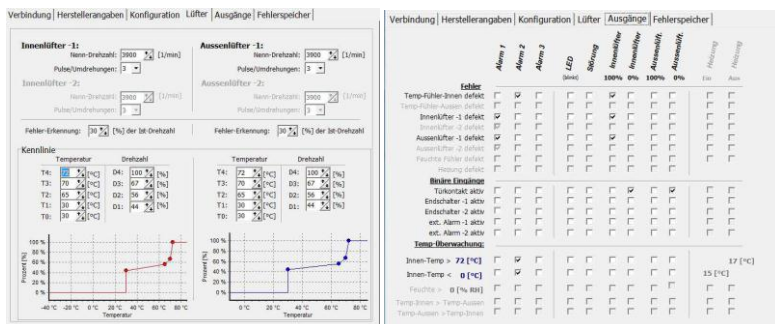
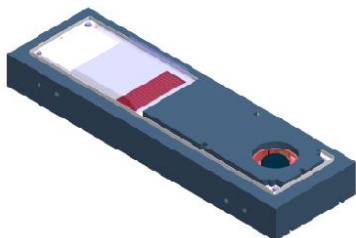


Rittal – The System. outdoor cabinets – street cabinets

CS9760.327 Air / Air Heat Exchanger

Air / Air Heat Exchanger to use at MFC8/12/15/18 outdoor cabinets

Mounting position: Roof
 Dimensions: WxHxD= 930 x 130 x 280 mm
 Spec. cooling capacity: up to 49 W/K at MFC 18
 Supply voltage: 48 V DC
 Temperature range: -33 °C bis +75°C
 Protection class (external- to internal circuit): IP 54
 Protection class (Heat Exchanger to MFC): IP55
 Temperature control: Microcontroller with USB- Connection
 Fan speed curve settable via Software
 Connection: 12pol. Wago connector part of the delivery.
 Material (Housing): Aluminium
 Surface: painted RAL 7035

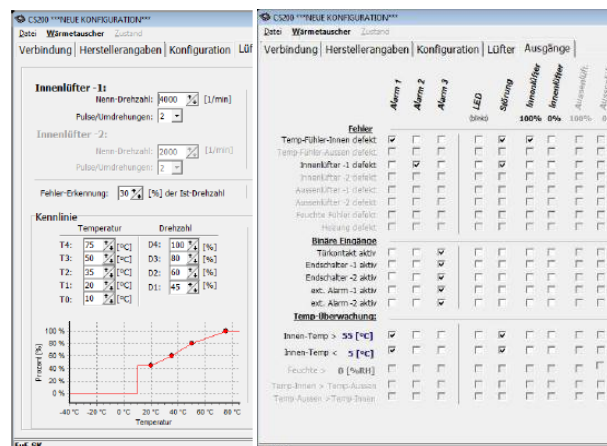
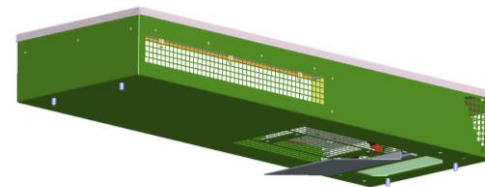


Pict.: Software for configuration

CS9760.342 Direct Air Cooler - DAC

Direct Air Cooling System DAC to use at MFC8/12/15/18 outdoor cabinets

Mounting Position: Roof
 Dimensions: WxHxD= 875 x 125 x 314 mm
 Spec. cooling capacity: up to 100 W/K
 Supply Voltage: 48 V DC
 Temperature range: -33 °C bis +75°C
 Protection class (external- to internal circuit): IP 54
 Protection class (DAC to MFC): IP55
 Temperature control: Microcontroller with USB- Connection
 Fan speed curve and alarm settable via Software
 Connection: 12pol. Wago Connector part of the delivery
 Material (Housing): Aluminium
 Surface: painted RAL 7035



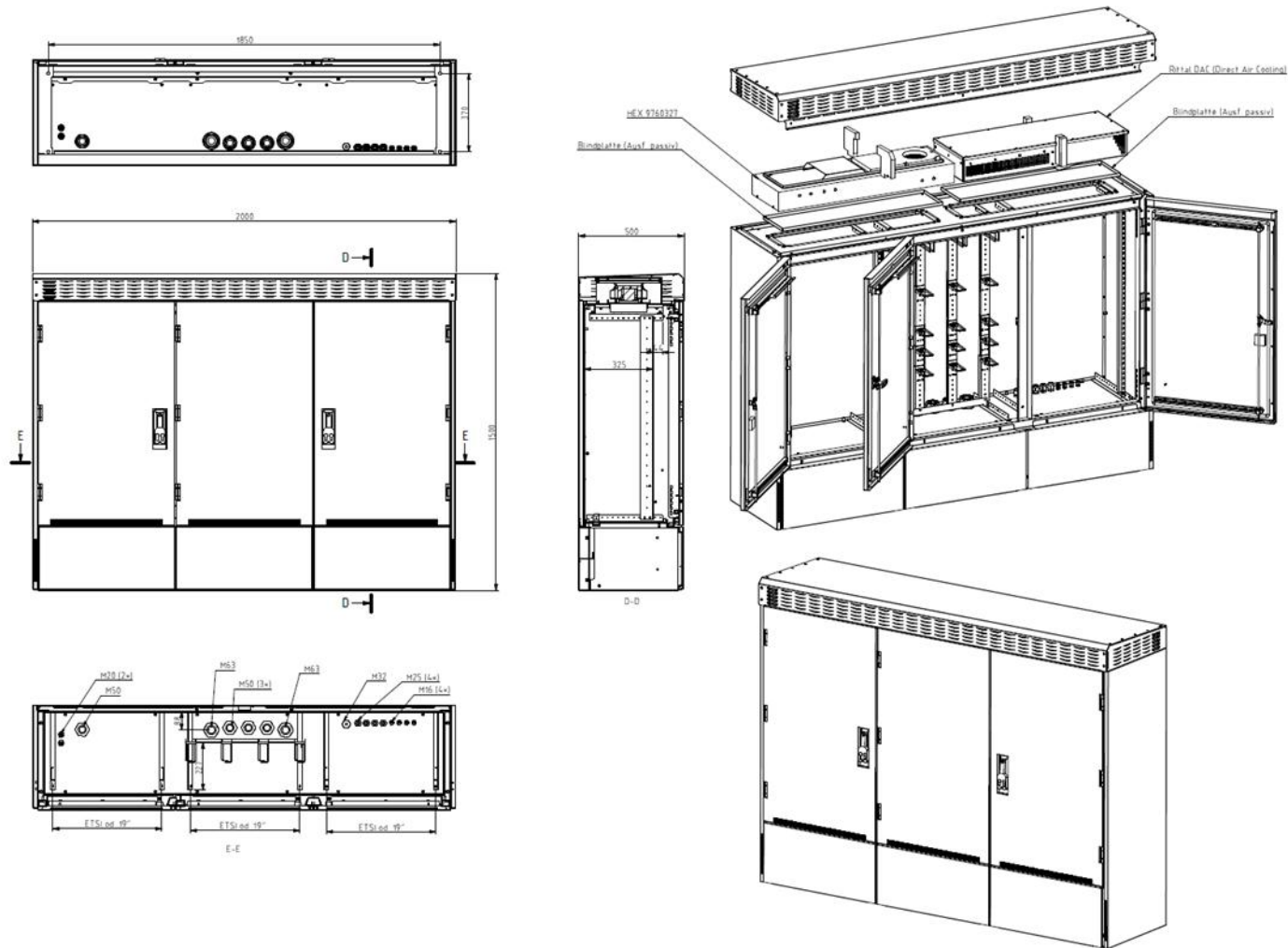
Pict.: Software for configuration



Rittal – The System.

outdoor cabinets – street cabinets

CS9750.918 3doors symmetric



ENCLOSURES

POWER DISTRIBUTION

CLIMATE CONTROL

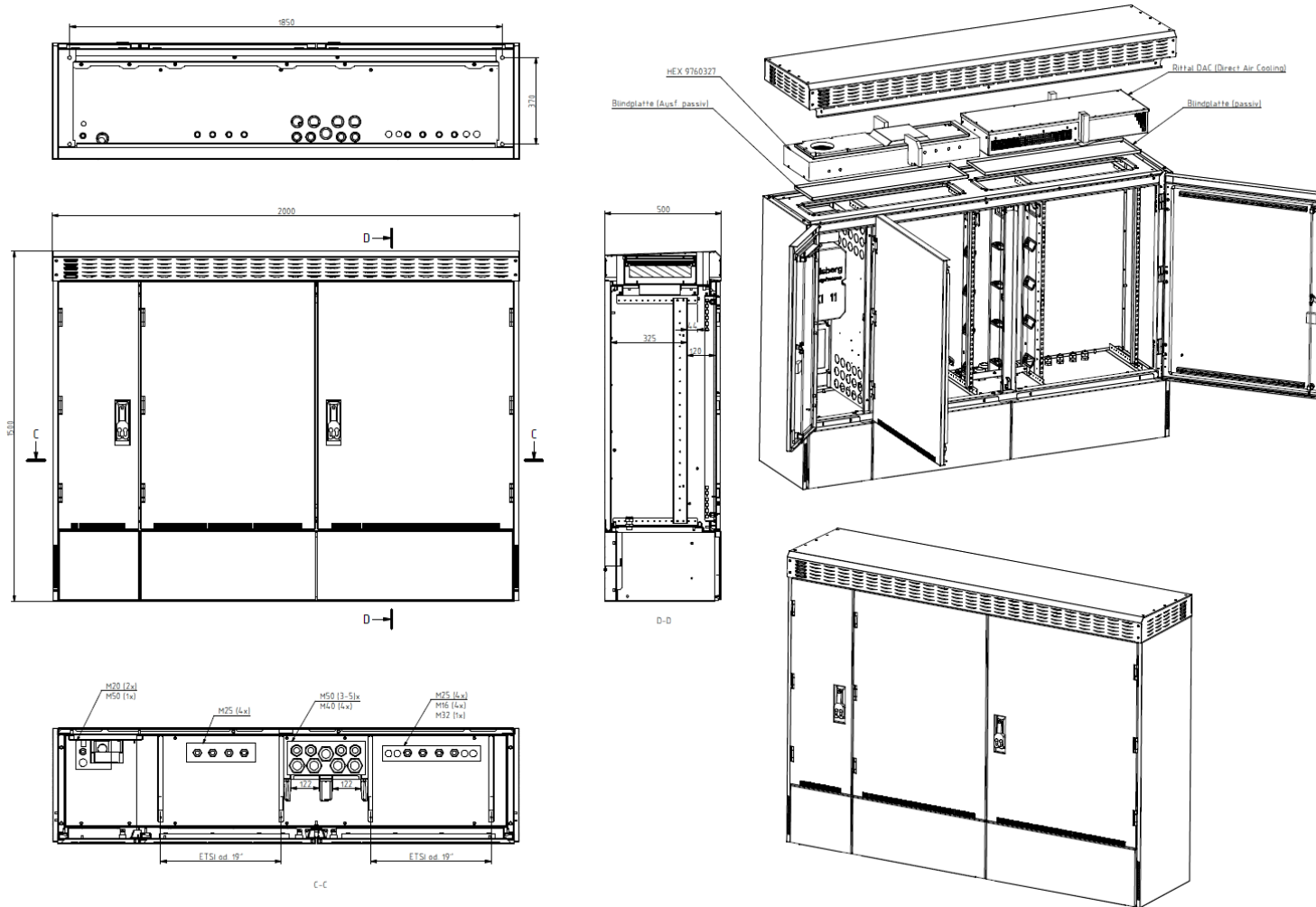
IT INFRASTRUCTURE

SOFTWARE & SERVICES

Rittal – The System.

outdoor cabinets – street cabinets

CS9750.918 3doors asymmetric



ENCLOSURES

POWER DISTRIBUTION

CLIMATE CONTROL

IT INFRASTRUCTURE

SOFTWARE & SERVICES