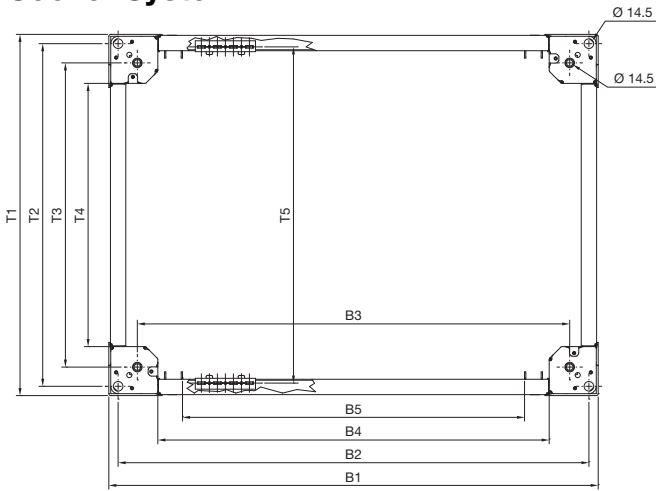


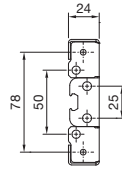
Systemausbau

Sockel

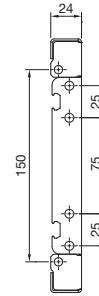
Sockel-System VX



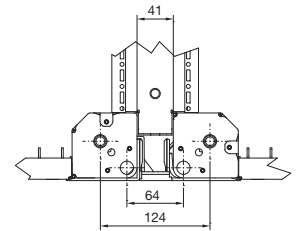
Ansicht A



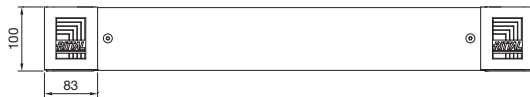
Ansicht B



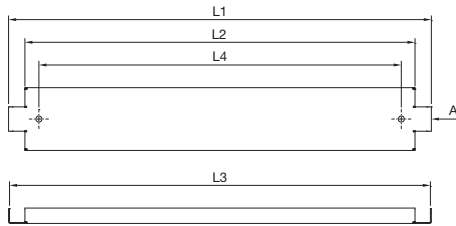
Anreihung



Sockel, 100 mm hoch



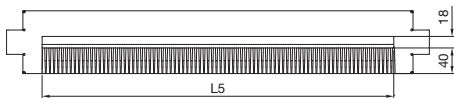
Sockel-Blenden, geschlossen, 100 mm hoch, Vorderansicht



Rückansicht



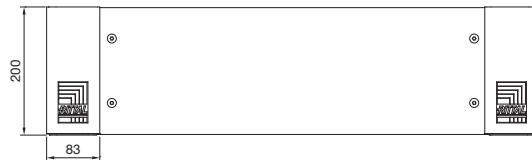
Sockel-Blenden mit Bürstenleiste, 100 mm hoch, Vorderansicht



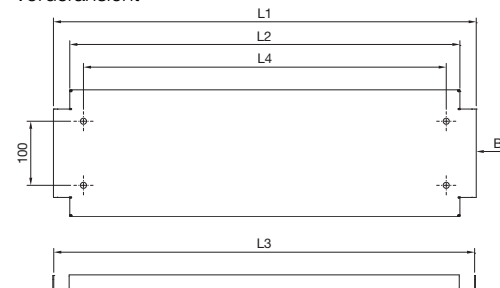
Sockel-Blenden, belüftet, 100 mm hoch, Vorderansicht



Sockel, 200 mm hoch



Sockel-Blenden, geschlossen, 200 mm hoch, Vorderansicht



Rückansicht



Für Schrankbreite oder -tiefe mm	Breitenmaße mm					Längenmaße mm					Tiefenmaße mm				
	B1	B2	B3	B4	B5	L1	L2	L3	L4	L5	T1	T2	T3	T4	T5 ¹⁾
300	264	235	175	111	34	160	109	157	66	–	264	235	175	111	225
400	364	335	275	211	134	260	209	257	166	–	364	335	275	211	325
500	464	435	375	311	234	360	309	357	266	–	464	435	375	311	425
600	564	535	475	411	334	460	409	457	366	330	564	535	475	411	525
800	764	735	675	611	534	660	609	657	566	530	764	735	675	611	725
850	814	785	725	661	585	710	659	707	616	–	–	–	–	–	775
1000	964	935	875	811	734	860	809	857	766	730	964	935	875	811	925
1100	1064	1035	975	911	834	960	909	957	866	–	–	–	–	–	1025
1200	1164	1135	1075	1011	934	1060	1009	1057	966	930	1164	1135	1075	1011	1125
1600	1564	1535	1475	1411	1334	1460	1409	1457	1366	–	–	–	–	–	1525
1800	1764	1735	1675	1611	1534	1660	1609	1657	1566	–	–	–	–	–	1725

¹⁾ T5 = Abstand Systemlochung inkl. Sockel-Ausbauwinkel