

Rittal – The System.

Faster – better – everywhere.

► More than just a base/plinth: Flex-Block base/plinth system



ENCLOSURES

POWER DISTRIBUTION

CLIMATE CONTROL

IT INFRASTRUCTURE

SOFTWARE & SERVICES

FRIEDHELM LOH GROUP



Rittal – The System.

Faster – better – everywhere.



ENCLOSURES

POWER DISTRIBUTION

CLIMATE CONTROL

FRIEDHELM LOH GROUP

Systematic!

Everything we do centres around the benefits to you. With you in mind, we have developed a perfectly coordinated system platform that unites innovative products, pioneering engineering solutions and comprehensive service. This is complemented by a range of accessories that may be used throughout the entire system. Allow us to convince you with the

Flex-Block base/plinth system:

- **Fast** – Speed up your enclosure construction with fast, tool-free assembly
- **Convenient** – Enhanced user-friendliness in terms of transportation and siting
- **Efficient** – Assembly and logistics processes designed for significant time and cost savings
- **Modular** – For enclosure systems TS 8, SE 8, TS IT and PC



CLICK!

Flex-Block

Hex-Block

ENCLOSURES

POWER DISTRIBUTION

CLIMATE CONTROL

FRIEDHELM LOH GROUP



Fast!

Tool-free assembly

- **Tool-free** – Base/plinth assembly in less than 30 seconds
- **Easy** – Simply clip the front and side trim panels into position
- **Convenient** – Baying by hand with clip attachment
- **Anti-twist** – Simple positioning on the enclosure with a positioning aid
- **Fast** – Clip the punched rails into place for cable routing

IT INFRASTRUCTURE

SOFTWARE & SERVICES





ENCLOSURES

POWER DISTRIBUTION

CLIMATE CONTROL

FRIEDHELM LOH GROUP



Mobile!

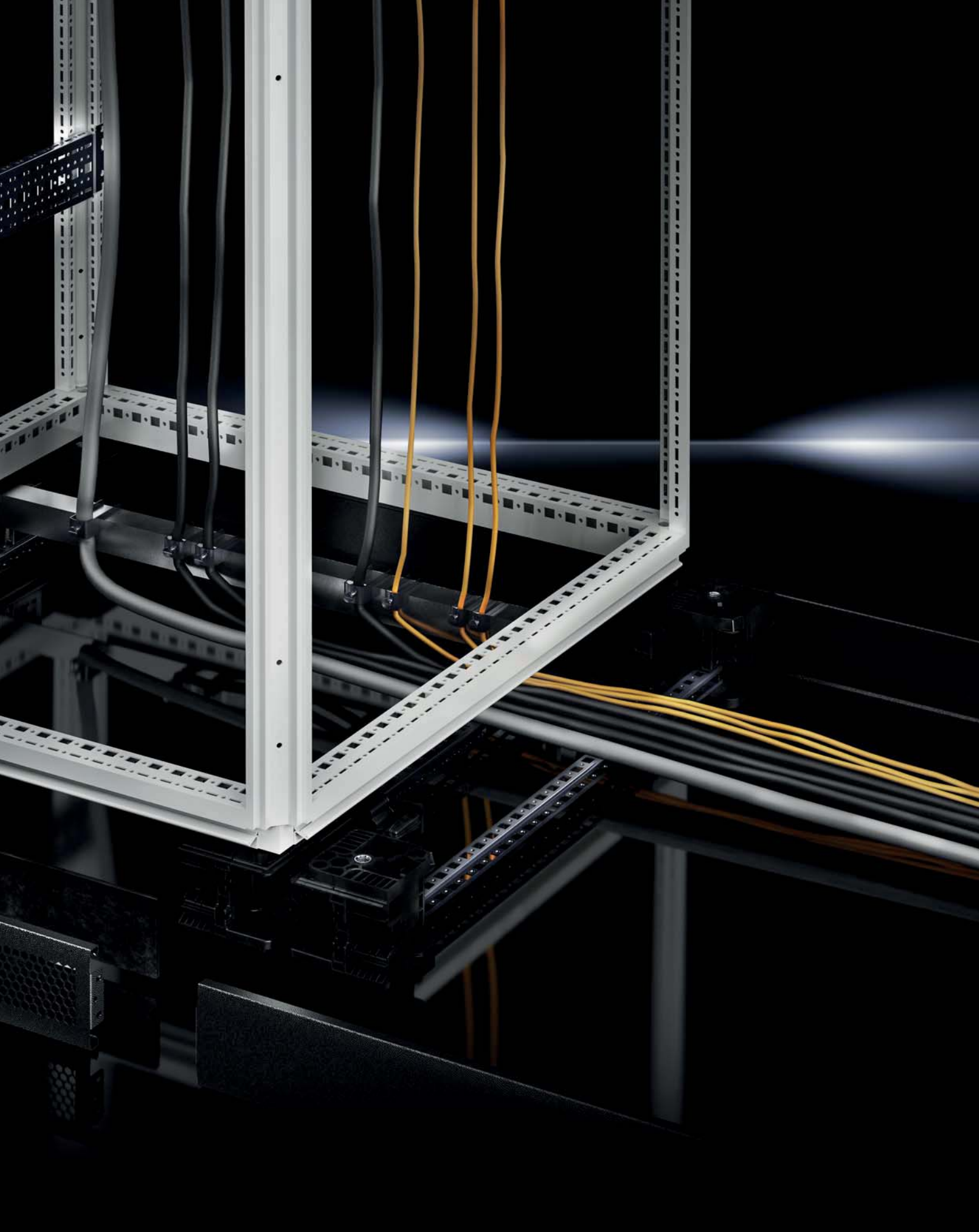
Simple transportation from A to B, even without a pallet

- **Suitable** – For forklifts and lifting trucks. Simply remove trim panels on opposite sides and position beneath the enclosure frame
- **Practical** – This reduces clearance heights by the height of the pallet
- **Faultless** – Trim panels are not fitted until the enclosure arrives at its final installation site, thus avoiding the risk of scratches and other visual defects

IT INFRASTRUCTURE

SOFTWARE & SERVICES



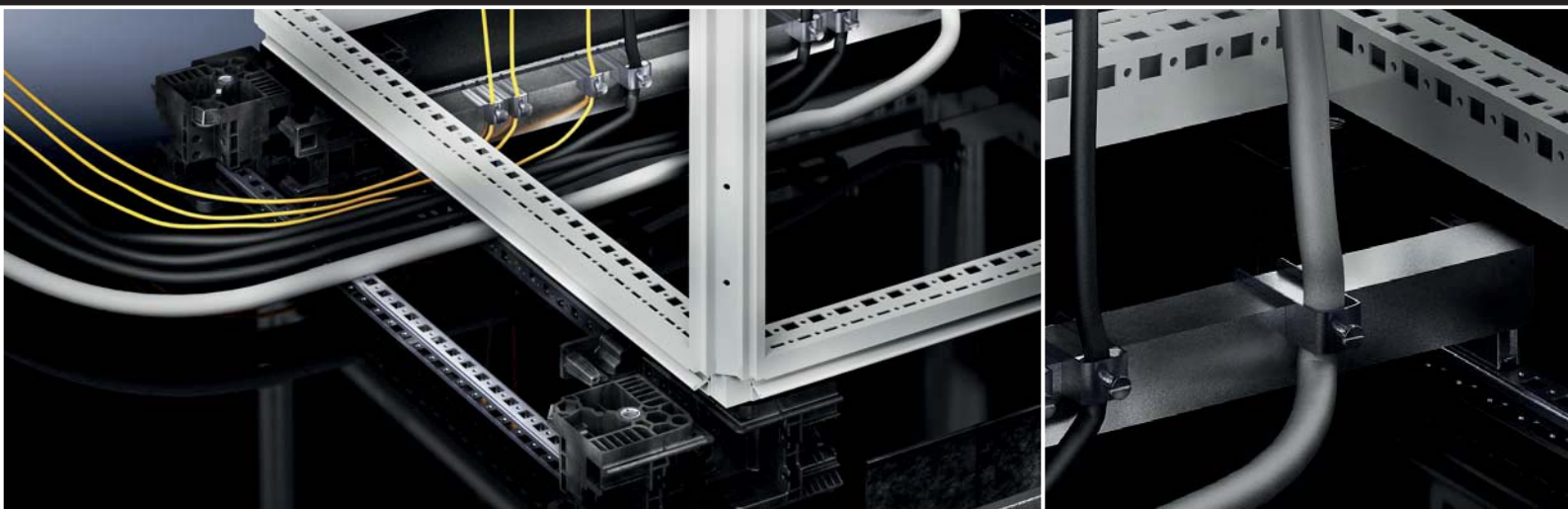


ENCLOSURES

POWER DISTRIBUTION

CLIMATE CONTROL

FRIEDHELM LOH GROUP



Exceptional!

Everything neat and tidy

- **Individual** – Trim panels are removable on all sides for cable entry
- **Tool-free** – Punched rails for cable clamp rails are fitted without the need for tools
- **Systematic** – With bayed base/plinths, individual panels may be fitted with cable clamp rails, all using system accessories; no machining required



ENCLOSURES

POWER DISTRIBUTION

CLIMATE CONTROL

FRIEDHELM LOH GROUP



Extendible!

Grows along with your requirements

- **Individual** – Available in 100 mm and 200 mm height
- **Independent** – The base/plinth may be mounted retro-spectively at the installation site
- **Flexible** – Corner pieces and trim panels may be ordered separately
- **Space-saving** – Minimal storage space requirements
- **Uniform** – The trim panels have identical dimensions in the width and depth
- **Optional** – If preferred, the trim panels can also be omitted completely

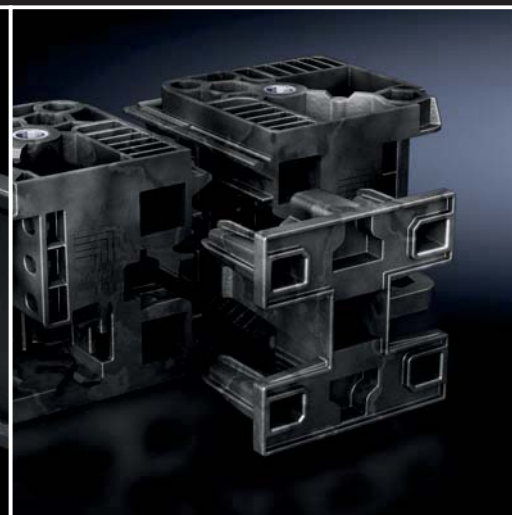
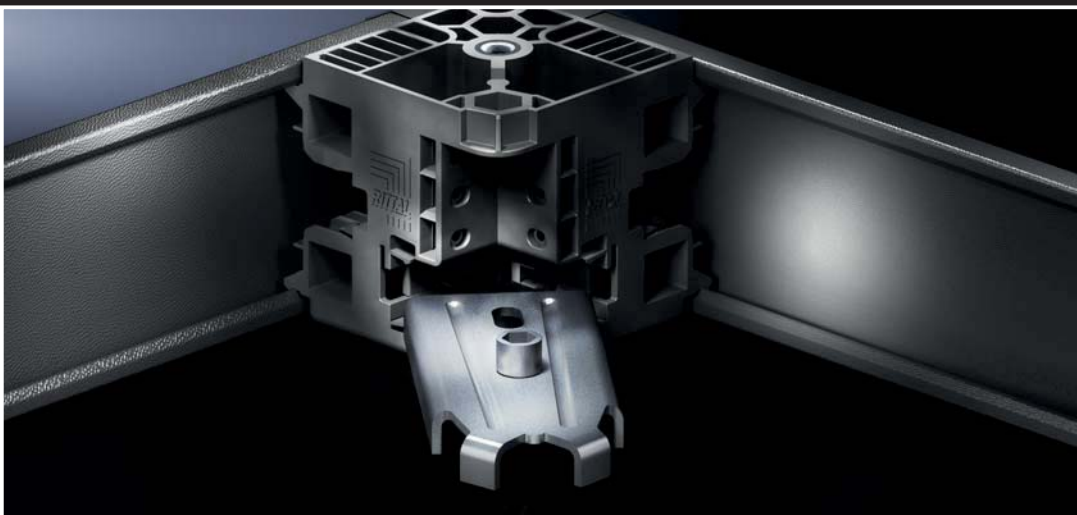


ENCLOSURES

POWER DISTRIBUTION

CLIMATE CONTROL

FRIEDHELM LOH GROUP



Strong!

No load too heavy

- **Secure** – Thanks to the large contact surface between the Flex-Block corner piece, the floor and the enclosure (trim panels may be clipped into position afterwards)
- **Load capacity** – High load capacity of up to 15,000 N
- **Resilient** – With high-quality materials

Flex-Block base/plinth system

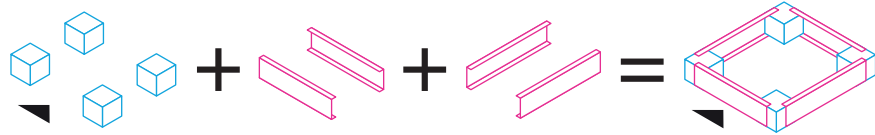


The Rittal base/plinth system

Flex-Block

Freely combinable base/plinth system for virtually any application. Because the corner pieces and trim panels are packaged separately, it may be tailored to any application.

The enclosure load rests on the corner pieces, so that the trim panels can be attached or removed at any time by using clips. The base/plinth trim panels are symmetrical and are readily exchanged in the width and depth. This creates unprecedented flexibility and great savings potential with base/plinth configuration.

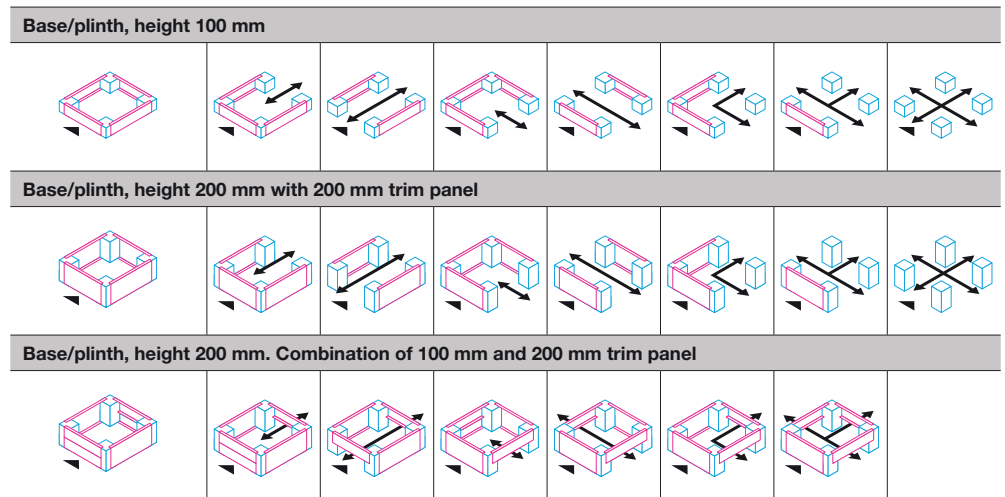


One Model No. for the **Flex-Block corner pieces** front and rear

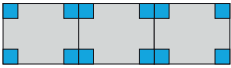


One Model No. for the **Flex-Block trim panels** front and rear

One Model No. for the **Flex-Block trim panels** at the sides

A complete **Flex-Block base/plinth**

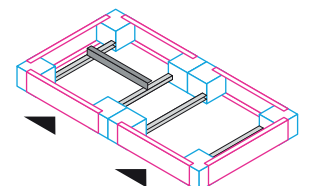


Functional and cost benefits

Order includes	Functional benefits	Potential savings for 100 mm high Flex-Block compared with complete base/plinth Flex-Block
3 packs of Flex-Block corner pieces	The enclosures rest securely on the corner pieces. Transportation via forklift or lifting truck with free-standing enclosures is supported.	12 trim panels 
3 packs of Flex-Block corner pieces 4 packs of Flex-Block trim panels	Completely closed suite of base/plinths, no trim panels between the enclosure panels. This means more space for assembly and cable entry.	4 trim panels 
3 packs of Flex-Block corner pieces 2 packs of Flex-Block trim panels	Trim panels are only needed in the area viewed; there are no trim panels between the enclosures. This means more space for assembly and cable entry.	8 trim panels 

Other options:

- Cable clamp may be configured individually in every enclosure panel using system accessories
- With 200 mm Flex-Block corner pieces, either 100 mm high or 200 mm high trim panels may be used, depending on requirements



Flex-Block base/plinth system

Flex-Block corner pieces

for TS, TS IT, SE, PC

High-strength plastic corner pieces for individual tool-free assembly with Flex-Block trim panels and accessories.

Material:

- Corner pieces: Fibreglass-reinforced plastic
- Cover caps: ABS

Colour:

- RAL 9005

Supply includes:

- 1 set =
4 corner pieces
4 cover caps
Assembly parts for mounting on the enclosure

Corner pieces height mm	Model No.
100	8100.000
200	8200.000



Accessories

- Flex-Block trim panels, see page 15
- Punched rail 23 x 23 mm, see Catalogue 34, from page 611
- Baying clip 8000.100, see page 15
- Adaptor sleeve 8000.500, see Catalogue 34, from page 522
- Base mounting plate 2817.000, see Catalogue 34, from page 516



Flex-Block trim panels

for Flex-Block corner pieces

For tool-free assembly. With symmetrical enclosure dimensions, trim panels are identical in the width and depth.

Material:

- Sheet steel

Colour:

- RAL 9005

Supply includes:

- 1 set = 2 trim panels

100 mm high, solid

For enclosure width and depth in mm	Model No.
300	8100.300
400	8100.400
500	8100.500
600	8100.600
800	8100.800
1000	8100.010
1200	8100.120
1600	8100.160
1800	8100.180

200 mm high, solid

For enclosure width and depth in mm	Model No.
300	8200.300
400	8200.400
500	8200.500
600	8200.600
800	8200.800
1000	8200.010
1200	8200.120

100 mm high, vented

For enclosure width and depth in mm	Model No.
600	8100.602
800	8100.802



Zubehör:

- Filter mats for vented Flex-Block trim panels 7583.500, see Catalogue 34, from page 517



Baying clip

for baying the Flex-Block corner pieces

Tool-free baying of Flex-Block base/plinths via a simple clip system.

Material:

- Fibreglass-reinforced plastic

Colour:

- RAL 9005

Packs of	Model No.
12 pc(s).	8000.100



Rittal – The System.

Faster – better – everywhere.

- Enclosures
- Power Distribution
- Climate Control
- IT Infrastructure
- Software & Services

RITTAL Scandinavian ab
Rittalgatan 1 · SE-262 73 Ängelholm
Phone +46 (0)431 44 26 00 · Fax +46 (0)431 44 26 44
E-mail: info@rittal.se · www.rittal.se

RITTAL AS
Postboks 258 · N-1401 Ski
Phone +47 64 85 13 00 · Fax +47 64 85 13 01
Besøksadresse: Vestveien 18 · N-1400 Ski
E-mail: rittal@rittal.no · www.rittal.no

RITTAL A/S
Dybendalsvænget 4 · DK-2630 Taastrup
Phone +45 70 25 59 00 · Fax +45 70 25 59 01
E-mail: info@rittal.dk · www.rittal.dk

ENCLOSURES

POWER DISTRIBUTION

CLIMATE CONTROL

IT INFRASTRUCTURE

SOFTWARE & SERVICES



FRIEDHELM LOH GROUP