

Rittal – The System.

Faster – better – everywhere.

▶ 316 Stainless Steel TS 8 Enclosure



The most
rugged TS 8 yet

ENCLOSURES

POWER DISTRIBUTION

CLIMATE CONTROL

IT INFRASTRUCTURE

SOFTWARE & SERVICES



The TS 8 Evolved

Since the original carbon steel TS 8 revolutionized freestanding enclosures with its modular design, industry has been demanding a rugged stainless steel version from the world's leading enclosure manufacturer. Rittal has responded and is excited to introduce the latest addition to its world recognized enclosure portfolio: the 316 Stainless Steel TS 8. Based on the original highly acclaimed TS 8 enclosure series, this rugged stainless steel platform is the ideal freestanding solution for harsh environments.

This UL Type 4X modular enclosure system provides unsurpassed flexibility, scalability, strength, and durability. In addition to offering superior protection from corrosive atmospheres, the 316 Stainless Steel TS 8 affords many advantages over traditional unibody designs, including: expandability, lower weight (reduced transportation costs), 30 percent more mounting space, and better workability (reduced labor costs).

Stainless steel 316 construction makes this TS 8 impervious to corrosive atmospheres. The superior stainless steel 316 alloy offers excellent resistance to high temperatures, common chlorides (such as salt present in seawater), as well as chemicals like sulfuric acid, bromides, iodides, and fatty acids. Stainless steel 316 is also resistant to stress cracking, pitting, and crevice corrosion.

Whether housing drives, flow monitoring systems or critical electrical components, this TS 8 maintains a clean, consistent environment in the most extreme conditions found in industries like oil and gas, mining, pulp and paper, food and beverage, and life sciences.

The 316 Stainless Steel TS 8 features and benefits include:

- 30 percent more available mounting space than traditional unibody enclosures of equal dimensions
- Four-point latching system and continuous foamed-in-place gasket provide a water and dust proof environmental seal
- Padlock-able handle that provides both easy access and security
- Full functionality and expandability of the TS enclosure series
- A large assortment of internal accessories that allow for three dimensional mounting on all internal surfaces
- Internally removable floor panel that simplifies conduit and wiring installation
- Depth adjustable and removable zinc-plated carbon steel mounting panel included with enclosure
- Eyebolts which allow for flexibility during transportation and installation
- Spring-loaded, quick-release hinges that enable fast and easy door removal and replacement
- Overall load capacity of 3,150 pounds.





IT INFRASTRUCTURE

SOFTWARE & SERVICES





Oil and Gas: High Tech Design for High Tech Applications

Advances in monitoring, extraction, and delivery are occurring very quickly in the oil and gas industry. As components continue to evolve, drilling rig and refinery operations require the kind of strong, durable protection this TS 8 can provide.

- Superb chloride resistance gives the 316 Stainless Steel TS 8 the corrosion resistance required at offshore exploration sites.
- 30 percent more mounting space than a traditional unibody enclosure makes the TS 8 the best choice to house advanced machinery and instrumentation.
- Baying together several TS 8 enclosures offers for an ideal solution for housing the machinery and instrumentation that keeps massive oil and gas operations running.



Food and Beverage: Adaptable to Evolving Standards and Tastes

The ever-changing demands of modern day consumers require food and beverage companies to quickly design production lines capable of precise monitoring, adding and removing products, and changing recipes, all while maintaining high sanitation standards. This rapidly changing, high tech environment is ideal for Rittal's 316 Stainless Steel TS 8 Enclosure.

- The TS 8 is an enclosure system built for adapting and fitting into variable systems. Unmatched scalability, a depth adjustable mounting panel, and a removable floor panel for easy wiring make this more than just a basic enclosure.
- The superior construction resists corrosion caused by common salts and fatty acids found in food processing applications.
- Resists stress cracking and pitting that can lead to surface corrosion and metal contamination of products.



Pulp and Paper: Built Rugged for the Forest or Mill

The use of heavy machinery is prevalent in pulp processing and paper production. The control and monitoring components of this processing equipment must be aptly protected from the chemicals found in pulp mills and the high humidity of forests. This type of protection is exactly what Rittal had in mind with the design of the new 316 stainless steel TS 8.

- Rittal's TS 8 frame is folded 16 times, giving it an overall load capacity of 3,150 pounds, ideal to house elaborate drive technology and hydraulic management equipment.
- Exposure to chlorine dioxide, sulfates, and sulfites used in chemical heavy refining processes and bleaching procedures are no problem for this rugged TS 8.
- Scalability and a 1,350 pound mounting panel weight capacity make this enclosure a great choice for protecting the large motor drives needed to move heavy loads.

ENCLOSURES

POWER DISTRIBUTION

CLIMATE CONTROL

Water and Wastewater Treatment: An Alloy Resistant to Extreme Chemicals

The United Nations has estimated that the amount of wastewater produced globally per year is six times the amount of water in all the rivers of the world. Emerging technological processes for desalination and wastewater treatment demand ruggedness and durability, just what this 316 Stainless Steel TS 8 offers.

- Resists corrosion caused by chloride and corrosives common at treatment plants.
- Four roof-installed eyebolts, baying capabilities, and more usable, flexible mounting space make the TS 8 easy to move, expand, and adapt to evolving filtration applications.
- Four-point latching system and continuous foamed-in-place gasket provide superior protection from salt spray and chemicals.
- Superior craftsmanship and elite-level materials make this enclosure ideal for the range of indoor and outdoor applications in this industry.



Life Sciences: Clean and Consistent for Pure Production

This 316 Stainless Steel TS 8 is built for consistency in an industry that demands it. Whether swapping batches or adjusting a production line to meet strict regulations, this dynamic enclosure remains strong and clean. The valuable combination of UL Type 4X corrosion resistance and environmental protection serves an array of life science applications.

- Allows for intense wash down processes that return the brushed finish surface to like-new condition and reduces the risk of metallic contamination.
- Features like a depth-adjustable mounting panel, spring loaded door hinges, and a removable floor panel provide this TS 8 with the versatility needed for varying applications.
- A large assortment of available accessories gives the TS 8 the most dynamic internal mounting capabilities of any freestanding enclosure on the market.



Mining: Superior Protection in Demanding Environments

The accelerated consumption of energy, metal, and minerals is driving the mining industry to explore sites in more remote regions. This exploration in addition to the expansion of automation technology creates the requirement to protect sophisticated instrumentation in even more extreme conditions. The 316 Stainless Steel TS 8 is tailor made for these applications.

- UL Type 4X certification ensures that the critical components housed within the TS 8 are safe from dust, moisture, and corrosion at mines or refinery locations.
- The resilient construction is capable of handling dings and abrasions that can happen at highly active application sites.
- Roof-installed eyebolts allow for mobility and scalability on even the most remote or patchy terrain.



316 Stainless Steel TS 8 Enclosure, UL Type 4X, IP 66, Single Door — 316 Stainless Steel

| Part Number | HxWxD inches | HxWxD mm | Sidewalls Part Number (Pair) | Mounting Panel (Included) HxW inches | Mounting Panel (Included) HxW mm | 8" (200 mm) High Plinth, Front & Rear | 8" (200 mm) High Plinth, Sides | 12" (300 mm) High Floor Stand Kit |
|-------------|--------------|----------------|------------------------------|--------------------------------------|----------------------------------|---------------------------------------|--------------------------------|-----------------------------------|
| 9977477 | 71x24x24 | 1800x0600x0600 | 9977479 | 67x20 | 1696x499 | 9972908 | 8702065 | 9963530 |
| 9977472 | 71x32x20 | 1800x0800x0500 | 9977478 | 67x28 | 1696x699 | 9972907 | 8702055 | 9963529 |
| 9977475 | 71x32x24 | 1800x0800x0600 | 9977479 | 67x28 | 1696x699 | 9972907 | 8702065 | 9963530 |
| 9977470 | 79x24x24 | 2000x0600x0600 | 9977481 | 75x20 | 1896x499 | 9972908 | 8702065 | 9963530 |
| 9977473 | 79x24x32 | 2000x0600x0800 | 9977482 | 75x20 | 1896x499 | 9972908 | 9977494 | 9973052 |
| 9977468 | 79x32x20 | 2000x0800x0500 | 9977480 | 75x28 | 1896x699 | 9972907 | 8702055 | 9963529 |
| 9977467 | 79x32x24 | 2000x0800x0600 | 9977481 | 75x28 | 1896x699 | 9972907 | 8702065 | 9963530 |
| 9977466 | 79x32x32 | 2000x0800x0800 | 9977482 | 75x28 | 1896x699 | 9972907 | 9977494 | 9973052 |
| 9977471 | 87x24x24 | 2200x0600x0600 | 9977483 | 83x20 | 2096x499 | 9972908 | 8702065 | 9963530 |
| 9977476 | 87x24x32 | 2200x0600x0800 | 9977484 | 83x20 | 2096x499 | 9972908 | 9977494 | 9973052 |
| 9977469 | 87x32x24 | 2200x0800x0600 | 9977483 | 83x28 | 2096x699 | 9972907 | 8702065 | 9963530 |
| 9977474 | 87x32x32 | 2200x0800x0800 | 9977484 | 83x28 | 2096x699 | 9972907 | 9977494 | 9973052 |

Accessories

| Part Number | Description | Material |
|-------------|----------------------------------|---------------------|
| 9977478 | 1800H500D Sidewalls | 316 Stainless Steel |
| 9977479 | 1800H600D Sidewalls | 316 Stainless Steel |
| 9977480 | 2000H500D Sidewalls | 316 Stainless Steel |
| 9977481 | 2000H600D Sidewalls | 316 Stainless Steel |
| 9977482 | 2000H800D Sidewalls | 316 Stainless Steel |
| 9977483 | 2200H600D Sidewalls | 316 Stainless Steel |
| 9977484 | 2200H800D Sidewalls | 316 Stainless Steel |
| 9963529 | 0300H0500W Floor Stand Kit | 316 Stainless Steel |
| 9963530 | 0300H0600W Floor Stand Kit | 316 Stainless Steel |
| 9973052 | 0300H0800W Floor Stand Kit | 316 Stainless Steel |
| 8702055 | 0200H0500W Side Plinth | 316 Stainless Steel |
| 8702065 | 0200H0600W Side Plinth | 316 Stainless Steel |
| 9977494 | 0200H0800W Side Plinth | 316 Stainless Steel |
| 9972908 | 0200H0600W Front and Rear Plinth | 316 Stainless Steel |
| 9972907 | 0200H0800W Front and Rear Plinth | 316 Stainless Steel |
| 9977485 | 1800H500D Suite Kit | 316 Stainless Steel |
| 9977486 | 1800H600D Suite Kit | 316 Stainless Steel |
| 9977487 | 2000H500D Suite Kit | 316 Stainless Steel |
| 9977488 | 2000H600D Suite Kit | 316 Stainless Steel |
| 9977489 | 2000H800D Suite Kit | 316 Stainless Steel |
| 9977490 | 2200H600D Suite Kit | 316 Stainless Steel |
| 9977491 | 2200H800D Suite Kit | 316 Stainless Steel |

316 Stainless Steel TS 8 Enclosure

Stainless Steel UL Type 4X, IP66, Single Door—316 Stainless Steel

Configuration:

Enclosure frame with mounting panel, door, roof with eyebolts, rear wall, and removable floor panel

Finish:

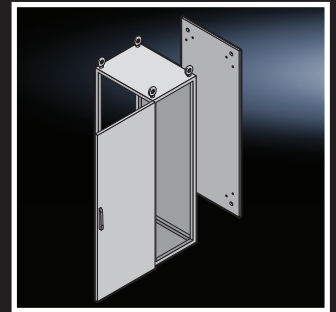
Enclosure frame: Type 316 stainless steel
Door, roof and rear wall: Brushed, grain size 400
Mounting panel, Removable floor panel: Brushed, grain size 400

Material:

Type 316 stainless steel
Enclosure frame, roof, rear wall and cable plates:
16 ga (1.5 mm)
Door: 14 ga (2.0 mm)
Mounting panel: 11 ga (3.0 mm)

Protection Ratings:

cULus Type 4X
(IP 66 to EN 60 529)
UL file: EL70282



Padlock-able Handle

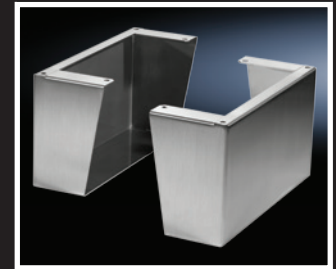
Provides both easy access and security

Four-Point Latching System and Continuous Foamed-In-Place Gasket

Provides a water and dust proof environmental seal

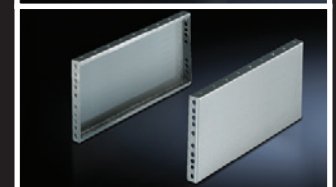
Floor Stand Kit

Permits easy access to the bottom of the enclosure and is purchased separately



Base/Plinth Trim Panels

Fewer parts, more opportunities, lower purchasing, storage and assembly costs – this is the formula behind the base/plinth system



Rittal – The System.

Faster – better – everywhere.

- Enclosures
- Power Distribution
- Climate Control
- IT Infrastructure
- Software & Services

Rittal Corporation

Woodfield Corporate Center • 425 N. Martingale Road, Suite 400 • Schaumburg, IL • USA
1 Rittal Place • Urbana Ohio 43078 • USA
Phone: 937-399-0500 • Fax: 800-477-4003 • Toll-free: 800-477-4000
Email: rittal@rittal.us • Online: www.rittal.us

ENCLOSURES

POWER DISTRIBUTION

CLIMATE CONTROL

IT INFRASTRUCTURE

SOFTWARE & SERVICES

FRIEDHELM LOH GROUP

