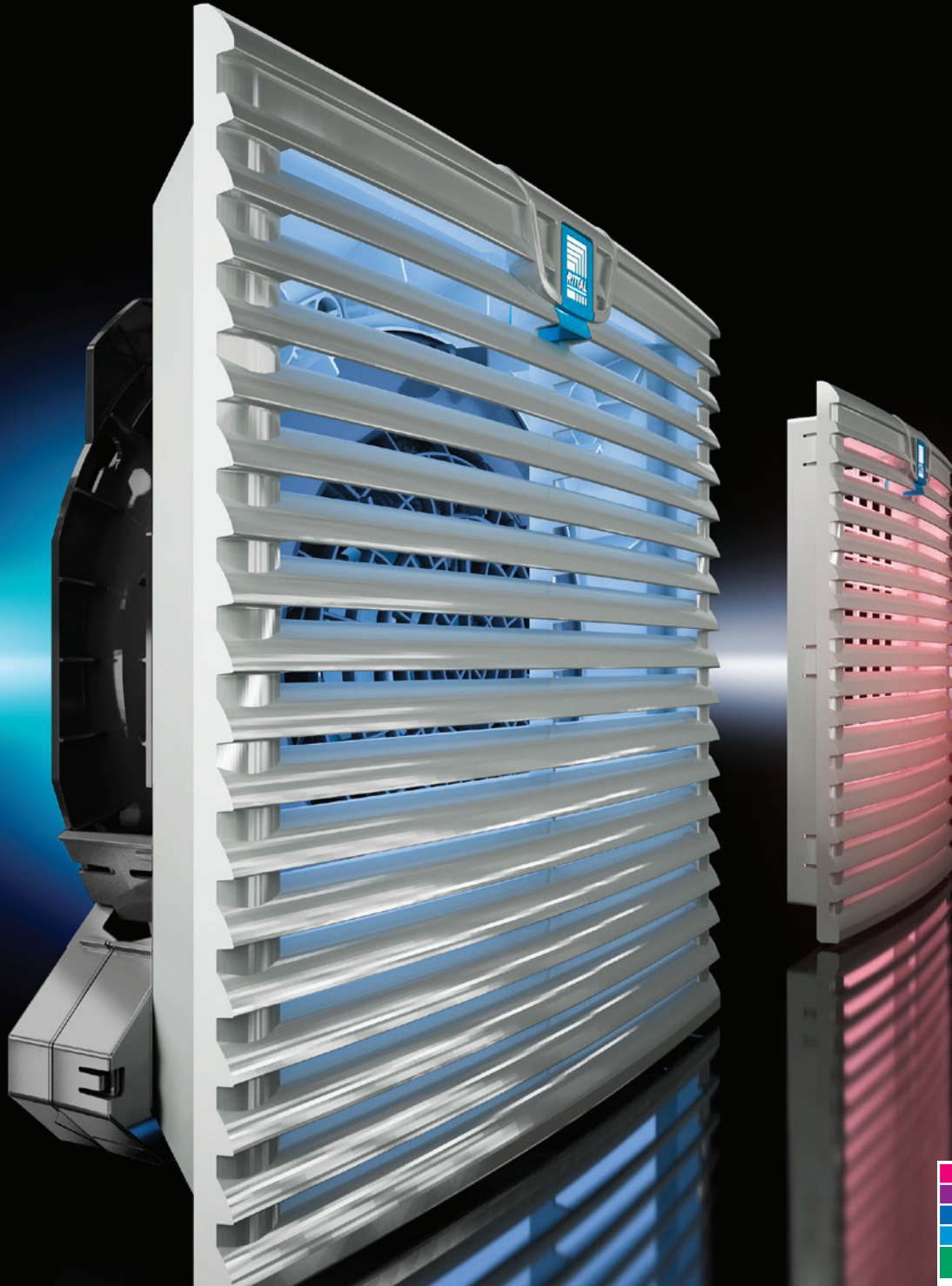


Rittal – The System.

Faster – better – everywhere.

► TopTherm Filter Fans



ENCLOSURES

POWER DISTRIBUTION

CLIMATE CONTROL

IT INFRASTRUCTURE

SOFTWARE & SERVICES



FRIEDHELM LOH GROUP

**More pressure.
Higher air flow rates.**



Installation without tools

- Snap-in mounting for easy installation
- Simple reversal of the air flow direction by turning the fan module
- Flexible positioning of the power connection
- Spring clamp terminals for electrical connection without tools
- Louvered grille latch for fast filter mat replacement without tools

Efficient technology

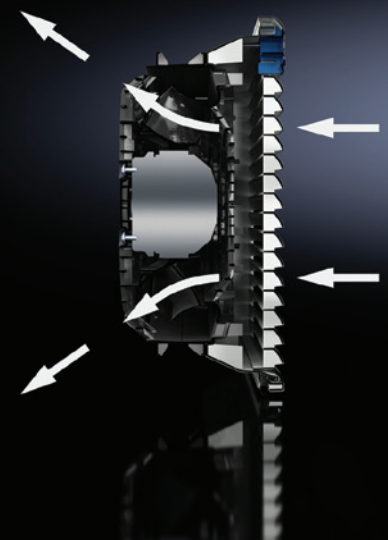
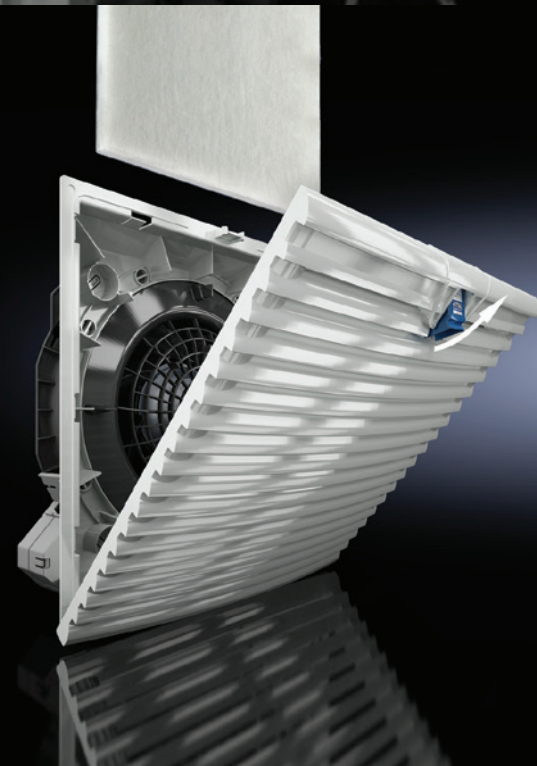
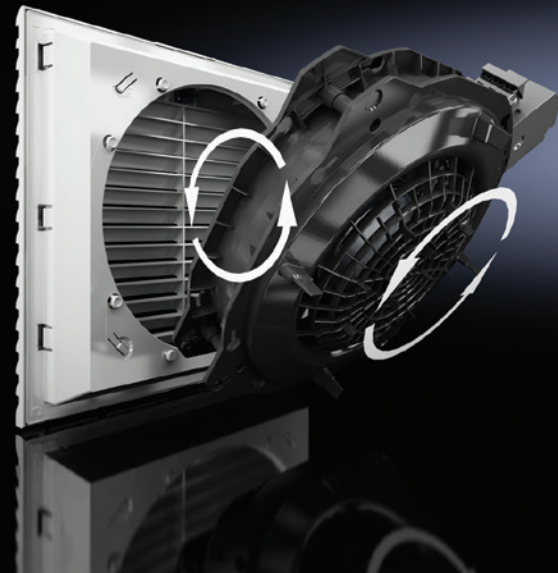
- Air throughput from 12 - 424 cfm (20 to 700 m³/h)
- New diagonal fan technology for greater pressure stability and constant air flow when installed, even with a contaminated filter mat
- Reduced installation depth
- Flow-optimized air routing
- Extended service life of filter mats and thus longer maintenance intervals
- UL Type 12 (IP 54) out of the box
- All fan models available with EMC shielding

Air routing

- Intelligent combination of radial and axial fan technology for most fan models
- Air flow spreads diagonally from the fan, promoting even air distribution throughout the enclosure

Additional environmental protection

- Hose-proof hoods prevent the entry of water
- Ratings of up to UL Type 4X are achieved with addition of hood



Filter Fan



Color:

- RAL 7035

Supply includes:

- Complete unit ready to install, including filter mat

Note:

- For energy-efficient operation of the fan-and-filter units, we recommend using the enclosure internal thermostat, the speed control or the digital enclosure internal temperature display and thermostat

Approvals:

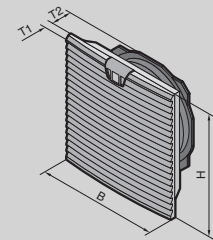
Available on the internet

Performance Diagrams:

Available on the internet

Technical Details:

Available on the internet



Air throughput 12 - 32 cfm (20 – 55 m³/h)

Model No.	Packs of	3237.100	3237.110	3237.124	3238.100	3238.110	3238.124
Rated operating voltage V, ~, Hz		230, 1~, 50/60	115, 1~, 50/60	24 (DC)	230, 1~, 50/60	115, 1~, 50/60	24 (DC)
Air throughput, unimpeded air flow cfm (m³/h)		12/15 (20/25)	12/15 (20/25)	12 (20)	32/39 (55/66)	32/39 (55/66)	32 (55)
Rated current A		0.065 / 0.052	0.12 / 0.1	0.125	0.12 / 0.11	0.24 / 0.22	0.24
Pre-fuse A		2	2	2	2	2	2
Motor circuit-breaker		–	–	–	–	–	–
Power consumption W		11 / 9	11 / 9	3	19 / 18	19 / 18	5.5
Height (H) inches (mm)		4.6 (116.5)	4.6 (116.5)	4.6 (116.5)	5.8 (148.5)	5.8 (148.5)	5.8 (148.5)
Width (B) inches (mm)		4.6 (116.5)	4.6 (116.5)	4.6 (116.5)	5.8 (148.5)	5.8 (148.5)	5.8 (148.5)
Depth (T1) inches (mm)		0.6 (16)	0.6 (16)	0.6 (16)	0.6 (16)	0.6 (16)	0.6 (16)
Max. installation depth (T2) inches (mm)		1.7 (43)	1.7 (43)	1.7 (43)	2.3 (58.5)	2.3 (58.5)	2 (58.5)
Required mounting cut-out (BxH) inches (mm)		3.6 X 3.6 (92 x 92)	3.6 X 3.6 (92 x 92)	3.6 X 3.6 (92 x 92)	4.9 X 4.9 (124 x 124)	4.9 X 4.9 (124 x 124)	4.9 X 4.9 (124 x 124)
Fan		Axial, self-starting shaded pole motor	Axial, self-starting shaded pole motor	Axial, DC motor	Diagonal, self-starting shaded pole motor	Diagonal, self-starting shaded pole motor	Diagonal, DC motor
Operating temperature range		+5°F...+131°F	+5°F...+131°F	+5°F...+131°F	+5°F...+131°F	+5°F...+131°F	+5°F...+131°F
Storage temperature range		-22°F...+158°F	-22°F...+158°F	-22°F...+158°F	-22°F...+158°F	-22°F...+158°F	-22°F...+158°F
Noise level dB(A)		38 / 43	38 / 43	38	46 / 49	46 / 49	46

Accessories

Outlet filter	1 pc(s).	3237.200	3237.200	3237.200	3238.200	3238.200	3238.200
Fine filter mats	5 pc(s).	–	–	–	3238.055	3238.055	3238.055
Hose-proof hood	1 pc(s).	3237.080	3237.080	3237.080	3238.080	3238.080	3238.080
Blanking cover	2 pc(s).	3237.020	3237.020	3237.020	3238.020	3238.020	3238.020
Enclosure internal thermostat	1 pc(s).	3110.000	3110.000	3110.000	3110.000	3110.000	3110.000
Digital enclosure internal temperature display and thermostat	1 pc(s).	3114.200	3114.200	3114.200	3114.200	3114.200	3114.200
Hygrostat	1 pc(s).	3118.000	3118.000	3118.000	3118.000	3118.000	3118.000
Speed control	1 pc(s).	3120.200	3120.200	–	3120.200	3120.200	–

Air throughput 62 - 106 cfm (105 – 180 m³/h)

Filter Fan

Model No.	Packs of	3239.100	3239.110	3239.124	3240.100	3240.110	3240.124
Rated operating voltage V, ~, Hz		230, 1~, 50/60	115, 1~, 50/60	24 (DC)	230, 1~, 50/60	115, 1~, 50/60	24 (DC)
Air throughput, unimpeded air flow cfm (m³/h)		62/71 (105/120)	62/71 (105/120)	62 (105)	106/94 (180/160)	106/94 (180/160)	106 (180)
Rated current A		0.12 / 0.11	0.24 / 0.22	0.23	0.21 / 0.19	0.42 / 0.38	0.43
Pre-fuse A		2	2	2	2	4	2
Motor circuit-breaker		–	–	–	–	–	–
Power consumption W		19 / 18	19 / 18	5.5	35 / 34	35 / 34	10
Height (H) inches (mm)		8 (204)	8 (204)	8 (204)	10 (255)	10 (255)	10 (255)
Width (B) inches (mm)		8 (204)	8 (204)	8 (204)	10 (255)	10 (255)	10 (255)
Depth (T1) inches (mm)		0.9 (24)	0.9 (24)	0.9 (24)	1 (25)	1 (25)	1 (25)
Max. installation depth (T2) inches (mm)		3.5 (90)	90	90	4.2 (107)	4.2 (107)	4.2 (107)
Required mounting cut-out (BxH) inches (mm)		7 X 7 (177 x 177)	7 X 7 (177 x 177)	7 X 7 (177 x 177)	8.8 X 8.8 (224 x 224)	8.8 X 8.8 (224 x 224)	8.8 X 8.8 (224 x 224)
Fan		Diagonal, self-starting shaded pole motor	Diagonal, self-starting shaded pole motor	Diagonal, DC motor	Diagonal, self-starting shaded pole motor	Diagonal, self-starting shaded pole motor	Diagonal, DC motor
Operating temperature range		+5°F...+131°F	+5°F...+131°F	+5°F...+131°F	-22°F...+131°F	-22°F...+131°F	-22°F...+131°F
Storage temperature range		-22°F...+158°F	-22°F...+158°F	-22°F...+158°F	-22°F...+158°F	-22°F...+158°F	-22°F...+158°F
Noise level dB(A)		46 / 49	46 / 49	46	51 / 46	51 / 46	51

Accessories

Outlet filter	1 pc(s).	3239.200	3239.200	3239.200	3240.200	3240.200	3240.200
Fine filter mats	5 pc(s).	3181.100	3181.100	3181.100	3182.100	3182.100	3182.100
Hose-proof hood	1 pc(s).	3239.080	3239.080	3239.080	3240.080	3240.080	3240.080
Blanking cover	2 pc(s).	3239.020	3239.020	3239.020	3240.020	3240.020	3240.020
Enclosure internal thermostat	1 pc(s).	3110.000	3110.000	3110.000	3110.000	3110.000	3110.000
Digital enclosure internal temperature display and thermostat	1 pc(s).	3114.200	3114.200	3114.200	3114.200	3114.200	3114.200
Hygrostat	1 pc(s).	3118.000	3118.000	3118.000	3118.000	3118.000	3118.000
Speed control	1 pc(s).	3120.200	3120.200	–	3120.200	3120.200	

Air throughput 135 - 323 cfm (230 – 550 m³/h)

Model No.	Packs of	3241.100	3241.110	3241.124	3243.100	3243.110
Rated operating voltage V, ~, Hz		230, 1~, 50/60	115, 1~, 50/60	24 (DC)	230, 1~, 50/60	115, 1~, 50/60
Air throughput, unimpeded air flow cfm (m³/h)		135/147 (230/250)	135/147 (230/250)	135 (230)	323/353 (550/600)	323/353 (550/600)
Rated current A		0.26 / 0.24	0.52 / 0.48	0.8	0.37 / 0.39	0.78 / 0.8
Pre-fuse A		4	4	2	4	6
Motor circuit-breaker		–	–	–	–	–
Power consumption W		40 / 42	40 / 42	19	70 / 87	75 / 90
Height (H) inches (mm)		10 (255)	10 (255)	10 (255)	12.7 (323)	12.7 (323)
Width (B) inches (mm)		10 (255)	10 (255)	10 (255)	12.7 (323)	12.7 (323)
Depth (T1) inches (mm)		1 (25)	1 (25)	1 (25)	1 (25)	1 (25)
Max. installation depth (T2) inches (mm)		4.2 (107)	4.2 (107)	4.2 (107)	4.7 (118.5)	4.7 (118.5)
Required mounting cut-out (BxH) inches (mm)		8.8 X 8.8 (224 x 224)	8.8 X 8.8 (224 x 224)	8.8 X 8.8 (224 x 224)	11.5 X 11.5 (292 x 292)	11.5 X 11.5 (292 x 292)
Fan		Diagonal, self-starting shaded pole motor	Diagonal, self-starting shaded pole motor	Diagonal, DC motor	Diagonal, 1~ capacitor motor	Diagonal, 1~ capacitor motor
Operating temperature range		-22°F...+131°F	-22°F...+131°F	-22°F...+131°F	-22°F...+131°F	-22°F...+131°F
Storage temperature range		-22°F...+158°F	-22°F...+158°F	-22°F...+158°F	-22°F...+158°F	-22°F...+158°F
Noise level dB(A)		54 / 56	54 / 56	54	59 / 61	59 / 61

Accessories

Outlet filter	1 pc(s).	3240.200	3240.200	3240.200	3243.200	3243.200
Fine filter mats	5 pc(s).	3182.100	3182.100	3182.100	3183.100	3183.100
Hose-proof hood	1 pc(s).	3240.080	3240.080	3240.080	3243.080	3243.080
Blanking cover	2 pc(s).	3240.020	3240.020	3240.020	3243.020	3243.020
Enclosure internal thermostat	1 pc(s).	3110.000	3110.000	3110.000	3110.000	3110.000
Digital enclosure internal temperature display and thermostat	1 pc(s).	3114.200	3114.200	3114.200	3114.200	3114.200
Hygrostat	1 pc(s).	3118.000	3118.000	3118.000	3118.000	3118.000
Speed control	1 pc(s).	3120.200	3120.200	–	3120.200	3120.200

Metric Measurements are Exact,
Imperial Measurements are Rounded

Air throughput 412 cfm (700 m³/h)

Filter Fan

Model No.	Packs of	3244.100	3244.110	3244.140
Rated operating voltage V, ~, Hz		230, 1~, 50/60	115, 1~, 50/60	400, 3~, 50 460, 3~, 60
Air throughput, unimpeded air flow cfm (m ³ /h)		412/453 (700/770)	412/453 (700/770)	412/453 (700/770)
Rated current A		0.43 / 0.6	0.9 / 1.25	0.17 / 0.21
Pre-fuse A		4	6	–
Motor circuit-breaker		–	–	6.3...10
Power consumption W		95 / 135	100 / 145	93 / 140
Height (H) inches (mm)		12.7 (323)	12.7 (323)	323
Width (B) inches (mm)		12.7 (323)	12.7 (323)	12.7 (323)
Depth (T1) inches (mm)		1 (25)	1 (25)	1 (25)
Max. installation depth (T2) inches (mm)		5.1 (130.5)	5.1 (130.5)	5.1 (130.5)
Required mounting cut-out (BxH) inches (mm)		11.5 X 11.5 (292 x 292)	11.5 X 11.5 (292 x 292)	11.5 X 11.5 (292 x 292)
Fan		Diagonal, 1~ capacitor motor	Diagonal, 1~ capacitor motor	Diagonal, three-phase motor
Operating temperature range		-22°F...+131°F	-22°F...+131°F	-22°F...+131°F
Storage temperature range		-22°F...+158°F	-22°F...+158°F	-22°F...+158°F
Noise level dB(A)		65 / 66	65 / 66	65 / 66

Accessories

Outlet filter	1 pc(s).	3243.200	3243.200	3243.200
Fine filter mats	5 pc(s).	3183.100	3183.100	3183.100
Hose-proof hood	1 pc(s).	3243.080	3243.080	3243.080
Blanking cover	2 pc(s).	3243.020	3243.020	3243.020
Enclosure internal thermostat	1 pc(s).	3110.000	3110.000	–
Digital enclosure internal temperature display and thermostat	1 pc(s).	3114.200	3114.200	–
Hygrostat	1 pc(s).	3118.000	3118.000	–
Speed control	1 pc(s).	3120.200	3120.200	–

Air throughput 32 - 135 cfm (55 – 230 m³/h), with EC technology

TopTherm Filter Fan

Model No.		3238.500	3239.500	3240.500	3241.500
Control interface		–	–	■	■
Rated operating voltage V, ~, Hz		200 - 240, 1~, 50/60	200 - 240, 1~, 50/60	200 - 240, 1~, 50/60	200 - 240, 1~, 50/60
Air throughput, unimpeded air flow cfm (m ³ /h)		32 (55)	62 (105)	106 (180)	135 (230)
Rated current A		0.05	0.05	0.12	0.17
Pre-fuse A		6	6	6	6
Power consumption W		6	6	11	16
Height (H) inches (mm)		5.8 (148.5)	8 (204)	10 (255)	10 (255)
Width (B) inches (mm)		5.8 (148.5)	8 (204)	10 (255)	10 (255)
Depth (T1) inches (mm)		0.6 (16)	0.9 (24)	1 (25)	1 (25)
Max. installation depth (T2) inches (mm)		2.3 (58.5)	3.5 (90)	4.2 (107)	4.2 (107)
Required mounting cut-out (BxH) inches (mm)		4.9 X 4.9 (124 x 124)	7 X 7 (177 x 177)	8.8 X 8.8 (224 x 224)	8.8 X 8.8 (224 x 224)
Fan		Diagonal, EC motor	Diagonal, EC motor	Diagonal, EC motor	Diagonal, EC motor
Operating temperature range		-4°F...+131°F	-4°F...+131°F	-13°F...+131°F	-13°F...+131°F
Storage temperature range		-22°F...+158°F	-22°F...+158°F	-22°F...+158°F	-22°F...+158°F
Noise level dB(A)		49	53	47	52

Accessories

Outlet filter	1 pc(s).	3238.200	3239.200	3240.200	3240.200
Fine filter mats	5 pc(s).	3238.055	3181.100	3182.100	3182.100
Hose-proof hood	1 pc(s).	3238.080	3239.080	3240.080	3240.080
Blanking cover	2 pc(s).	3238.020	3239.020	3240.020	3240.020
EC speed control		–	–	3235.440	3235.440
Enclosure internal thermostat	1 pc(s).	3110.000	3110.000	3110.000	3110.000
Digital enclosure internal temperature display and thermostat	1 pc(s).	3114.200	3114.200	3114.200	3114.200
Hygrostat	1 pc(s).	3118.000	3118.000	3118.000	3118.000

Air throughput 323 - 530 cfm (550 – 900 m³/h), with EC technology

TopTherm Filter Fan

Model No.		3243.500	3244.500	3245.500	3245.510
Control interface		■	■	■	■
Rated operating voltage V, ~, Hz		200 - 240, 1~, 50/60	200 - 240, 1~, 50/60	200 - 240, 1~, 50/60	100 - 130, 1~, 50/60
Air throughput, unimpeded air flow cfm (m ³ /h)		323 (550)	412 (700)	530 (900)	530 (900)
Rated current A		0.5	0.7	1.33	2.1
Pre-fuse A		6	6	4	6
Power consumption W		51	80	165	165
Height (H) inches (mm)		12.7 (323)	12.7 (323)	12.7 (323)	12.7 (323)
Width (B) inches (mm)		12.7 (323)	12.7 (323)	12.7 (323)	12.7 (323)
Depth (T1) inches (mm)		1 (25)	1 (25)	1 (25)	1 (25)
Max. installation depth (T2) inches (mm)		4.7 (118.5)	5.1 (130.5)	5.1 (130.5)	5.1 (130.5)
Required mounting cut-out (BxH) inches (mm)		11.5 X 11.5 (292 x 292)	11.5 X 11.5 (292 x 292)	11.5 X 11.5 (292 x 292)	11.5 X 11.5 (292 x 292)
Fan		Diagonal, EC motor	Diagonal, EC motor	Diagonal, EC motor	Diagonal, EC motor
Operating temperature range		-13°F...+131°F	-13°F...+131°F	-13°F...+131°F	-13°F...+131°F
Storage temperature range		-13°F...+158°F	-13°F...+158°F	-13°F...+158°F	-13°F...+158°F
Noise level dB(A)		63	64	72	72
Accessories					
Outlet filter	1 pc(s).	3243.200	3243.200	3243.200	3243.200
Fine filter mats	5 pc(s).	3183.100	3183.100	3183.100	3183.100
Hose-proof hood	1 pc(s).	3243.080	3243.080	3245.080	3245.080
Blanking cover	2 pc(s).	3243.020	3243.020	3243.020	3243.020
EC speed control		3235.440	3235.440	3235.440	3235.440
Enclosure internal thermostat	1 pc(s).	3110.000	3110.000	3110.000	3110.000
Digital enclosure internal temperature display and thermostat	1 pc(s).	3114.200	3114.200	3114.200	3114.200
Hygrostat	1 pc(s).	3118.000	3118.000	3118.000	3118.000

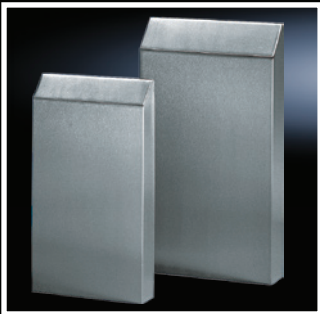
Air throughput 12 - 62 cfm (20 – 180 m³/h), EMC

TopTherm Filter Fan

Model No.		3237.600	3237.610	3238.600	3239.600	3240.600
Rated operating voltage V, ~, Hz		230, 1~, 50/60	115, 1~, 50/60	230, 1~, 50/60	230, 1~, 50/60	230, 1~, 50/60
Air throughput, unimpeded air flow cfm (m ³ /h)		12/15 (20/25)	12/15 (20/25)	32/39 (55/66)	62/71 (105/120)	106/94 (180/160)
Rated current A		0.065 / 0.052	0.065 / 0.052	0.12 / 0.11	0.12 / 0.11	0.21 / 0.19
Pre-fuse A		2	2	2	2	2
Power consumption W		11 / 9	11 / 9	19 / 18	19 / 18	35 / 34
Height (H) inches (mm)		4.6 (116.5)	4.6 (116.5)	5.6 (148.5)	8 (204)	10 (255)
Width (B) inches (mm)		4.6 (116.5)	4.6 (116.5)	5.6 (148.5)	8 (204)	10 (255)
Depth (T1) inches (mm)		0.6 (16)	0.6 (16)	0.6 (16)	0.9 (24)	1 (25)
Max. installation depth (T2) inches (mm)		1.7 (43)	1.7 (43)	2.3 (58.5)	3.5 (90)	4.2 (107)
Required mounting cut-out (BxH) inches (mm)		3.6 X 3.6 (92 x 92)	3.6 X 3.6 (92 x 92)	4.9 X 4.9 (124 x 124)	7 X 7 (177 x 177)	8.8 X 8.8 (224 x 224)
Fan		Axial, self-starting shaded pole motor	Axial, self-starting shaded pole motor	Diagonal, self-starting shaded pole motor	Diagonal, self-starting shaded pole motor	Diagonal, self-starting shaded pole motor
Operating temperature range		+5°F...+131°F	+5°F...+131°F	+5°F...+131°F	+5°F...+131°F	-22°F...+131°F
Storage temperature range		-22°F...+158°F	-22°F...+158°F	-22°F...+158°F	-22°F...+158°F	-22°F...+158°F
Noise level dB(A)		38 / 43	38 / 43	46 / 49	46 / 49	51 / 46
Accessories						
Outlet filter	1 pc(s).	3237.060	3238.060	3238.060	3239.060	3240.060
Spare filter mats	5 pc(s).	3237.066	3238.066	3238.066	3239.066	3240.066
Fine filter mats	5 pc(s).	–	3238.055	3238.055	3181.100	3182.100
Hose-proof hood	1 pc(s).	3237.080	3238.080	3238.080	3239.080	3240.080
Blanking cover	2 pc(s).	3237.020	3238.020	3238.020	3239.020	3240.020
EC speed control		–	–	–	–	–
Enclosure internal thermostat	1 pc(s).	3110.000	3110.000	3110.000	3110.000	3110.000
Digital enclosure internal temperature display and thermostat	1 pc(s).	3114.200	3114.200	3114.200	3114.200	3114.200
Hygrostat	1 pc(s).	3118.000	3118.000	3118.000	3118.000	3118.000
Speed control	1 pc(s).	3120.200	3120.200	3120.200	3120.200	3120.200

Air throughput 135 - 530 cfm (230 – 900 m³/h), EMC

Model No.		3241.600	3243.600	3243.610
Rated operating voltage V, ~, Hz		230, 1~, 50/60	230, 1~, 50/60	115, 1~, 50/60
Air throughput, unimpeded air flow cfm (m ³ /h)		135/147 (230/250)	324/353 (550/600)	324/353 (550/600)
Rated current A		0.26 / 0.24	0.37 / 0.39	0.78 / 0.80
Pre-fuse A		4	4	4
Power consumption W		40 / 42	70 / 87	75 / 90
Height (H) inches (mm)		10 (255)	12.7 (323)	12.7 (323)
Width (B) inches (mm)		10 (255)	12.7 (323)	12.7 (323)
Depth (T1) inches (mm)		1 (25)	1 (25)	1 (25)
Max. installation depth (T2) inches (mm)		4.2 (107)	4.7 (118.5)	4.7 (118.5)
Required mounting cut-out (BxH) inches (mm)		8.8 X 8.8 (224 x 224)	11.5 X 11.5 (292 x 292)	11.5 X 11.5 (292 x 292)
Fan		Diagonal, self-starting shaded pole motor	Diagonal, 1~ capacitor motor	Diagonal, 1~ capacitor motor
Operating temperature range		-22°F...+131°F	-22°F...+131°F	-22°F...+131°F
Storage temperature range		-22°F...+158°F	-22°F...+158°F	-22°F...+158°F
Noise level dB(A)		54 / 56	59 / 61	59 / 61
Accessories				
Outlet filter	1 pc(s).	3240.060	3243.060	3243.060
Spare filter mats	5 pc(s).	3240.066	3243.066	3243.066
Fine filter mats	5 pc(s).	3182.100	3183.100	3183.100
Hose-proof hood	1 pc(s).	3240.080	3243.080	3243.080
Blanking cover	2 pc(s).	3240.020	3243.020	3243.020
EC speed control		–	–	–
Enclosure internal thermostat	1 pc(s).	3110.000	3110.000	3110.000
Digital enclosure internal temperature display and thermostat	1 pc(s).	3114.200	3114.200	3114.200
Hygostat	1 pc(s).	3118.000	3118.000	3118.000
Speed control	1 pc(s).	3120.200	3120.200	3120.200



Accessories

Hose-proof hoods

For filter fan units/outlet filters

When the hose-proof hood is mounted above the filter fan unit or outlet filter a rating of IP 56 (UL 4X) to EN 60 529/10.91 is achieved. Particularly suitable for use in the food industry.

Material:

Stainless steel
Painted steel RAL 7035 (light gray)
Gasket: silicone, compliant with FDA 21 CFR 177.2600

Protection Ratings:

In conjunction with the filter fan units/outlet filters, UL Type 3R, 4 or 4X is met.
UL and cUL recognized

UL file: E76083

For	Dimensions inches (mm)	Part No. Stainless	Part No. RAL 7035
3237...	9 x 6 x 2 (230 x 150 x 40)	3237.080¹⁾	3237.085¹⁾
3238...	10 x 7 x 2 (245 x 176 x 55)	3238.080³⁾	3238.085²⁾
3239...	13 x 9 x 2 (33 x 233 x 55)	3239.080³⁾	3239.085²⁾
3240, 3241...	15 x 11 x 3 (390 x 282 x 85)	3240.080³⁾	3240.085²⁾
3243, 3244...	19 x 14 x 4 (480 x 350 x 110)	3243.080³⁾	3243.085²⁾

¹⁾UL Type 3R

²⁾UL Type 3R/4

³⁾UL Type 4X

TopTherm Filter Fan

3244.600	3244.610	3245.600
230, 1~, 50/60	115, 1~, 50/60	200 - 240, 1~, 50/60
412/453 (700/770)	412/453 (700/770)	530 (900)
0.43 / 0.6	0.9/ 1.25	1.33 / 1.33
4	4	4
95 / 135	100 / 145	165 / 165
12.7 (323)	12.7 (323)	12.7 (323)
12.7 (323)	12.7 (323)	12.7 (323)
1 (25)	1 (25)	1 (25)
5.1 (130.5)	5.1 (130.5)	5.1 (130.5)
11.5 X 11.5 (292 x 292)	11.5 X 11.5 (292 x 292)	11.5 X 11.5 (292 x 292)
Diagonal, 1~ capacitor motor	Diagonal, 1~ capacitor motor	Diagonal, EC motor
-22°F...+131°F	-22°F...+131°F	-22°F...+131°F
-22°F...+158°F	-22°F...+158°F	-22°F...+158°F
65 / 66	65 / 66	72

3243.060	3243.060	3243.060
3243.066	3243.066	3243.066
3183.100	3183.100	3183.100
3243.080	3243.080	3245.080
3243.020	3243.020	3243.020
-	-	-
3110.000	3110.000	3110.000
3114.200	3114.200	3114.200
3118.000	3118.000	3118.000
3120.200	3120.200	-

Outlet filters

For ventilation by convection, an outlet filter can be installed in the upper and lower sections of the modular enclosure.

Material:

ABS, material resistance to UL 94-V0

Color:

RAL 7035 (light gray)

Note:

EMC version must use EMC spare filter mat for replacement to ensure EMC shielding

Dimensions inches (mm)	Part No. RAL 7035	Part No. EMC
5 x 1 (116 x 16)	3237.200	3237.060
6 x 1 (148 x 16)	3238.200	3238.060
8 x 1 (204 x 24)	3239.200	3239.060
10 x 1 (255 x 25)	3240.200	3240.060
13 x 1 (323 x 25)	3243.200	3243.060

Special colors on request

Protection Ratings:

UL, cUL recognized

UL file: E76084

Configuration:

Outlet filter including standard filter mat.



Replacement filter mats

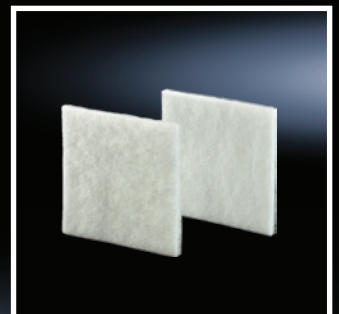
For filter fans

Made of random filter non-woven polyester. Temperature resistant up to 212° F (100° C), self-extinguishing, Class F1 according to DIN 53 538. Provides reliable filtration of almost all types of dust down to 10 micron grain size.

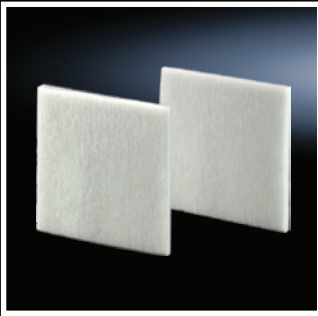
Material:

Synthetic fiber.

For filter fan units	H x W x D inches (mm)	PU	Part No.
3321 and 3237. . . .	4 x 4 x 0.4 (89 x 89 x 10)	5	3321.700
3322 and 3238. . . .	5 x 5 x 0.5 (120 x 120 x 12)	5	3322.700
3323 and 3239. . . .	7 x 7 x 0.7 (173 x 173 x 17)	5	3171.100
3324, 3325, 3240 and 3241. . . .	9 x 9 x 0.7 (221 x 221 x 17)	5	3172.100
3326 and 3243. . . .	11 x 11 x 0.7 (289 x 289 x 17)	5	3173.100
3327 and 3244. . . .	11 x 11 x 0.4 (289 x 289 x 10)	5	3327.700



Accessories



Fine filter mats

For filter fans

Used for extremely fine dust with particle sizes below 10 microns. Made of random filter non-woven polyester. Temperature resistant up to 212° F (100° C), self-extinguishing, Class F1 according to DIN 53 438. Anticipate higher air resistance when fine filter mats are used.

Installation note:

Place fine filter mat behind standard filter mat, closer to the fan motor.

For filter fan units/ outlet filters	H x W x D inches (mm)	PU	Part No.
3238...	4.7 x 4.7 x 0.5 (120 x 120 x 12)	5	3238.055
3323 . . . /3239	7 x 7 x 0.5 (173 x 173 x 12)	5	3181.100
3240 . . . /3241 . . . 3324 . . . /3325 . . .	9 x 9 x 0.5 (221 x 221 x 12)	5	3182.100
3243 . . . /3244 . . . 3326 . . . /3327 . . .	11 x 11 x 0.5 (289 x 289 x 12)	5	3183.100

Material:

Synthetic fiber.

Clean air side: closed structure.



Replacement filter mats

For EMC shielded filter fans

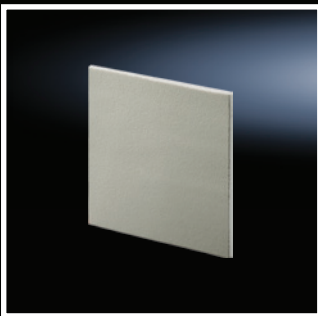
Supports the EMC shielding properties of Rittal EMC filter fans. Made of random filter non-woven polyester and additional copper coating. Temperature resistant up to 212° F (100° C), self-extinguishing, Class F1 according to DIN 53 428. Provides reliable filtration for almost all types of dust down to 10 micron grain size.

Material:

Copper-nickel coated synthetic fiber.

Contaminated side: closed structure

For filter fan	Filter class according to DIN EN 779	PU	Part No.
3237.6xx, 3237.060	G2	5	3237.066
3238.6xx, 3238.060	G2	5	3238.066
3239.6xx, 3239.060	G3	5	3239.066
3240.6xx, 3241.6xx, 3240.060	G3	5	3240.066
3243.6xx, 3243.060, 3244.6xx, 3245.6xx	G3	5	3243.066



Blanking cover

If existing mounting cut-outs for fan or outlet filters need to be closed to achieve a higher protection category, the filter mat of the fan or outlet filter can simply be replaced with a blanking cover; welding or other mechanical modification of the enclosure is not necessary.

Material:

Plastic

Protection category:

NEMA 12/IP 54

For filter fan	Part No.
3237. . . .	3237.020
3238. . . .	3238.020
3239. . . .	3239.020
3240. . . . /3241. . . .	3240.020
3243. . . . /3244. . . . 3245. . . .	3243.020



Speed control

Temperature-dependent speed control for Rittal fan and filter units. Dual rated 115/230 V, 50/60 Hz AC for noise reduction and to save energy in part-load operation.

Technical Specifications:

- For mounting on 35 mm support rail to DIN EN 50 022
- Rated operating voltage: 230 V (AC)/115 V (AC)
- Setting range: +68 to +131° F (+20 to +55° C)
- Phase cross-over controller

Voltage	Part No.
230/115 V AC	3120.200

- Maximum fan output: 300 W
- Dimensions inches (mm): 4.1 x 3.5 x 2.4 (105 x 91 x 60)

Protection Rating:

- UL file: E203342



Accessories

Enclosure thermostat

The enclosure thermostat is particularly suitable to control filter fans but can also be used to signal and monitor the temperature inside an enclosure.

Technical Specifications:

- Bi-metal sensor acts as a temperature-sensitive element with thermal feedback
- Contact: 1 pole, spring loaded switch element
- Permissible contact load:
Category 5 – 3 (heating)
AC 10 (4)¹⁾ A,
DC = 30 W
Category 5 – 4 (cooling)
AC 5 (4)¹⁾ A,
DC = 30 W
¹⁾ = Inductive load at $\cos \varphi = 0.6$
- Setting range 41 to 140° F (+5 to +60° C)
- Weight approximately 4 oz (105 grams)
- Dimensions 3 x 3 x 1" (71 x 71 x 33 mm)
- Switching difference approximately 1 K ± 0.8 K
- A broad voltage spectrum, just one model covers 24 to 230 V.
- Time-saving connection technique using a terminal strip with a screw connection from the outside.

Voltage	Part No.
230/115/60/48/24 V AC	3110.000
60/48/24 V DC	

- Flexible mounting on a vertical or horizontal 1" (35 mm) support rail to EN 50 022, and snap fastening in the TS/ES enclosure section using the supplied adaptor.

Protection Ratings:

UL, cUL recognized, CE, VDE
UL file: E174004



Hygrostat

The hygrostat switches on the fan when a preset relative humidity level in the enclosure is exceeded. This maintains the relative humidity in the enclosure above the dew point and prevents condensation in the cabinet or on components.

Technical Specifications:

- Contact population: Single-pole change-over contact as a quick-break contact
- Permissible contact load:
AC ~ 5 (0.2)¹⁾ A
DC = maximum 20 W
¹⁾ = Inductive load at $\cos \varphi = 0.6$
- Setting range 50 – 100% relative humidity
- Weight approximately 4 oz (100 g)
- Dimensions 3 x 3 x 1" (71 x 71 x 33.5 mm)
- Switching difference approximately 4%
- A broad voltage range, only one model covers 24 to 230 V.
- Time-saving connection technique using a terminal strip with a screw connection from the outside.
- Flexible mounting on a vertical or horizontal 1" (35 mm) support rail to EN 50 022, and snap fastening in the TS/ES enclosure section using the supplied adaptor.

Voltage	Part No.
24 - 230 V (AC/DC)	3118.000



Rittal – The System.

Faster – better – everywhere.

- Enclosures
- Power Distribution
- Climate Control
- IT Infrastructure
- Software & Services



From Rittal's newest Blue e+ energy efficient air conditioners to our liquid cooling units, enclosure heaters and climate control accessories, scan this qr code and discover the world of Rittal climate control products.

Rittal Corporation

Woodfield Corporate Center
425 North Martingale Road, Suite 400 • Schaumburg, Illinois 60173 • USA
Phone: 937-399-0500 • Toll-free: 800-477-4000
Email: rittal@rittal.us • Online: www.rittal.us

Rittal Systems Ltd.

6485 Ordan Drive • Mississauga, Ontario L5T 1X2 • Canada
Phone: 905-795-0777 • Toll-free: 800-399-0748
E-Mail: marketing@rittal.ca • Online: www.rittal.ca

Rittal Mexico

Dr. Roberto Gayol 1219-1B • Col. Del Valle Sur, 03100 • Mexico, D.F.
Phone: (+52) (55) 5559-5369 • Toll-free: 01 800 8 Rittal (748.825)
E-Mail: info@rittal.com.mx • Website: www.rittal.com.mx

07/17 • US195

ENCLOSURES

POWER DISTRIBUTION

CLIMATE CONTROL

IT INFRASTRUCTURE

SOFTWARE & SERVICES

