

# Rittal – The System.

Faster – better – everywhere.

## ► Revolutionise your cable management



ENCLOSURES

POWER DISTRIBUTION

CLIMATE CONTROL

IT INFRASTRUCTURE

SOFTWARE & SERVICES



FRIEDHELM LOH GROUP

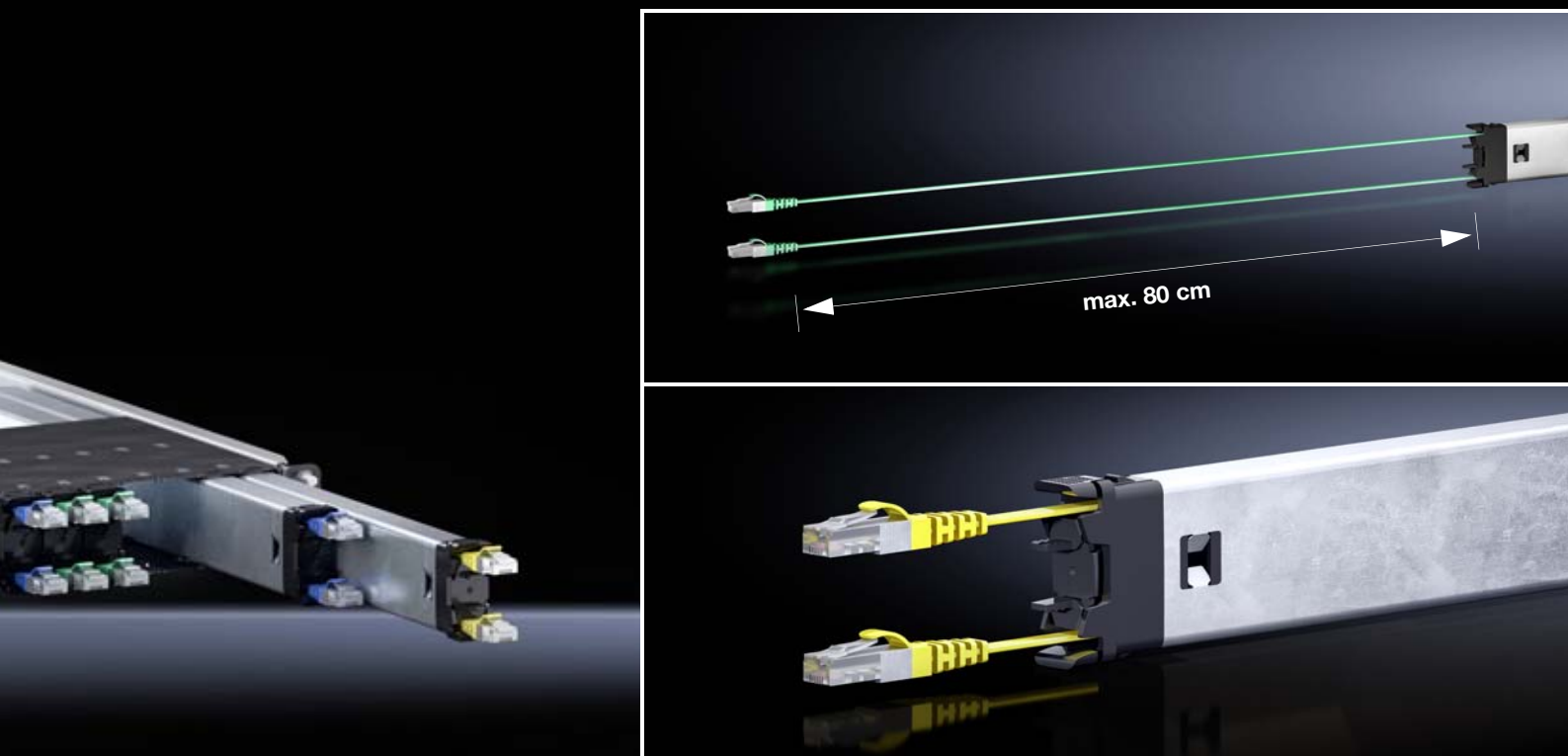
# Rittal – The System.

Faster – better – everywhere.



# Simple, secure patching

Modern network infrastructures are reliant on optimum performance and maximum flexibility with their cabling. To ensure this, Rittal offers complete system solutions, from simple network distributors through to robust network racks with a protection category of IP 55, also suitable for use in tough industrial environments. Meanwhile, the Network Cable Organizer (NCO) revolutionises conventional structured cabling and makes assembly 8 times faster.



- Front access – Ideal for retrofitting into existing 800 mm racks
- Secure locking – Each cable cassette has a cable attachment to avoid mechanical strain on the cable
- Preconfigured – Complete CAT 6 systems including 24 cable cassettes, 8 times faster than conventional cabling
- Always the right length! Surplus cable lengths – whether CAT 6 or fibre-optic – are simply withdrawn with a spring balancer
- Minimise cable chaos – Prevent obstructions to the air circulation in the vicinity of network switches

# Network Cable Organizer



## Benefits:

- Every fibre-optic cable is 100% tested and supplied with a corresponding measurement record
- Robust, 1 U sheet steel mounting frame for 24 cable cassettes
- Cables with RJ 45, LC duplex or SC duplex connectors, ready to use immediately
- Stainless steel cable cassettes to protect the CAT 6/fibre-optic cables

## Installation options:

- For use in all network racks from a depth of 800 mm
- Attachment to the front and rear 482.6 mm (19") level

## Material:

- Mounting frame: Sheet steel
- Cassettes: Stainless steel, plastic (POM)

## Colour:

- Mounting frame: RAL 9005 (black)

## Supply includes:

- Network Cable Organizer
- Installation kit
- 24 CAT 6 cassettes
- Assembly parts

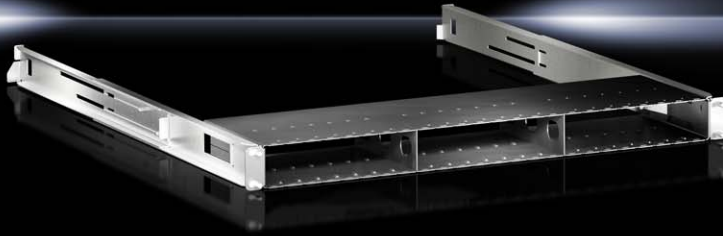
## Approvals:

- CE

## Network Cable Organizer, complete CAT 6 system

Model No.	P. of	7044.110	7044.120	7044.130	7044.140	7044.150	7044.160	7044.170
Complete CAT 6 system, 1 U	1 pc(s).	Mounting frame including CAT 6 cassettes						
Max. possible cassette population		24						
No. of cassettes, pre-configured		24						
Colour code CAT 6 cable		Black	Blue	Red	Yellow	Green	Violet	White
Cat 6 cable type		STP						
RJ 45 connector, per cable		2 x						
Usable cable length m, per cassette		1.6						
CAT 6 cable type		Shielded RJ 45 connector with gold-coated pins						
CAT 6 cable type		ISO/IEC 11801:2002, AWG 36, 100% copper, 250 MHz						
Dimensions (W x H x D) mm		450 x 44 x 600						
Operating temperature range		+10°C...+45°C						
Ambient humidity % (non-condensing)		10 – 95						
Weight, approx. kg		12.5						
<b>Optional accessories</b>								
NCO mounting frame (unpopulated, for self-configuration)	1 pc(s).	7044.010	7044.010	7044.010	7044.010	7044.010	7044.010	7044.010
NCO blanking cover to conceal unused slots	10 pc(s).	7044.020	7044.020	7044.020	7044.020	7044.020	7044.020	7044.020
CAT 6 cassettes, colour as above	3 pc(s).	7044.113	7044.123	7044.133	7044.143	7044.153	7044.163	7044.173
Identification labels (white, on DIN A5 sheet)	1 pc(s).	7044.178						

# Network Cable Organizer



## Benefits:

- Robust 1 U mounting frame for 24 cable cassettes
- Attachment to the front and rear 482.6 mm (19") level

## Installation options:

- For use in all network racks from a depth of 800 mm

## Material:

- Mounting frame: Sheet steel

## Colour:

- Mounting frame: RAL 9005 (black)

## Supply includes:

- Network Cable Organizer
- Installation kit
- Assembly parts

## Approvals:

- CE

## Network Cable Organizer, mounting frame

Model No.			P. of	7044.010		
NCO mounting frame (for self-configuration)			1 pc(s).	1 U, unpopulated		
Max. possible cassette population				24		
No. of cassettes, pre-configured				-		
Dimensions (W x H x D) mm				450 x 44 x 600		
Operating temperature range				+10°C...+45°C		
Ambient humidity % (non-condensing)				10 – 95		
Fibre-optic cassettes* (fibre-optic length: 1.6 m)		Connector type 1	Connector type 2	OM3	OM4	OS2
Fibre-optic cassettes	LC duplex	LC duplex	3 pc(s).	7044.230	7044.240	7044.210
	LC duplex	SC duplex	3 pc(s).	7044.231	7044.241	7044.211
Technical specifications for fibre-optic cables				OM3 RBS 50 µ/125 µ Multi mode, ISO/IEC 11801 EN 50173	OM4 RBS 50 µ/125 µ Multi mode, ISO/IEC 11801 EN 50173	OS2 RBS 9 µ/125 µ Single mode, ISO/IEC 11801 EN 50173
Colour of fibre-optic plastic sheathing				Aqua	Violet	Yellow
NCO blanking cover to conceal unused slots			1 pc(s).	7044.020		

\* Other cassette types/fibre-optic connectors (e.g. E-2000) available on request.



# Network enclosures TE 8000



## Benefits:

- No frame structure
- Optimum accessibility
- Readily dismantled and therefore easily installed

## Material:

- Enclosure: Sheet steel
- Glazed door: Single-pane safety glass, 3 mm

## Surface finish:

- Mounting frame: Dipcoat-primed
- Enclosure panels: Powder-coated

## Colour:

- RAL 7035

## Protection category IP to IEC 60 529:

- IP 20

## Max. load capacity (static) per enclosure:

- 4000 N

## Supply includes:

- Self-supporting 482.6 mm (19") mounting frames, front and rear, depth-variable
- Glazed door at the front, including 130° hinge, designer handle and security lock 3524 E

- Sheet steel door at the rear, including 130° hinge, security lock 3524 E
- Side panels, lockable, including security lock 3524 E
- Base frame with maximum cut-out (for optional population with module plates)
- Roof plate including concealed cut-out for cable entry and optional fan
- 4 levelling feet, M12, including base/plinth adaptor sleeve (supplied loose)
- 4 spacers, 20 mm (supplied loose) to raise the roof plate
- Flex-Block base/plinth 100 mm, vented
- Tested frame earthing to IEC 60 950, fitted
- 4 C rails, for cable clamping in the enclosure depth via cable clamps (supplied loose)
- 10 cable shunting rings (metal version), 125 x 65 mm (supplied loose)
- 50 multi-tooth screws M5, cage nuts M5, conductive (supplied loose)
- Brush kit for cable entry in the roof (supplied loose)

## Pre-configured

Units U	P. of	24	42	Page
<b>Width</b> mm		800	800	
<b>Height</b> mm		1,200	2,000	
<b>Height including base/plinth</b> mm		1300	2100	
<b>Depth</b> mm		800	800	
Distance between prefitted 482.6 mm (19") levels mm		495	495	
Free mounting space to the 482.6 mm (19") level, front/rear mm		130 / 130	130 / 130	
<b>Model No.</b>	1 pc(s).	<b>7888.840</b>	<b>7888.850</b>	
<b>Accessories</b>				
482.6 mm (19") fastener, 1 U	24 pc(s).	2090.000	2090.000	8
Baying kit	4 pc(s).	7888.640	7888.640	
Fan mounting plates	1 pc(s).	5502.020	5502.020	7
Fan expansion kit	1 pc(s).	7980.000	7980.000	
Component shelf, static installation	1 pc(s).	7000.620	7000.620	7
Component shelf, pull-out	1 pc(s).	7000.625	7000.625	7
Slide rails	2 pc(s).	7963.410	7963.410	
Socket strips in a plastic housing	1 pc(s).	7000.630	7000.630	10

## Fan mounting plate

### for TS IT, TE

For active ventilation. The unit may optionally be extended with additional fans.

#### Applications:

- For use in the cut-out integrated into the roof plate

#### Colour:

- RAL 7035

#### Supply includes:

- 1 fan unit
- 2 fans
- 1 thermostat
- Connection cable, open-ended
- Assembly parts

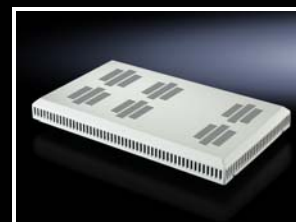
#### Note:

- The noise level given refers to the first fan.
- Connection via distributor box or country-specific connector



#### Accessories:

- Fan expansion kit



To fit enclosure width/depth mm	W x H x D mm	Number of fans	Number of fans (max.)	Air through-put per fan m <sup>3</sup> /h	Output per fan W	Rated operating voltage V, ~, Hz	Operating temperature range	Noise level per fan dB(A)	P. of	Model No.
800 x 800 800 x 1000 800 x 1200	340 x 54 x 550	2	6	160 / 180	15 / 14	230, 1~, 50/60	+5°C...+55°C	37	1 pc(s).	<b>5502.020</b>

## Component shelf, static installation

### for TE

The component shelf is attached directly at the side to the front and rear 482.6 mm (19") mounting frames for TE.

#### Material:

- Sheet steel

#### Colour:

- RAL 7035

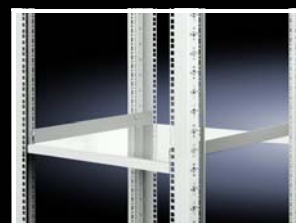
#### Supply includes:

- Assembly parts

#### Note:

- Not suitable for combination with telescopic slides

Contact surface, width mm	505
Contact surface, depth mm	410
Distance between 482.6 mm (19") levels mm	495
Load capacity (static) N	300
P. of	1 pc(s).
<b>Model No.</b>	<b>7000.620</b>



## Component shelf, pull-out

### for TE

For mounting between two 482.6 mm (19") mounting levels.

#### Benefits:

- Depth-variable to adjust to the distance between 482.6 mm (19") levels in a 25 mm pitch pattern
- Full withdrawal

#### Material:

- Base: Sheet steel

#### Surface finish:

- Base: Spray-finished
- Mounting kit/telescopic slides: Zinc-plated

Contact surface, width mm	409
Contact surface, depth mm	500
Distance between 482.6 mm (19") levels mm	395 – 645
Load capacity (static) N	500
P. of	1 pc(s).
<b>Model No.</b>	<b>7000.625</b>

#### Colour:

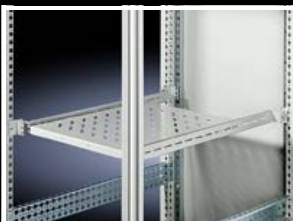
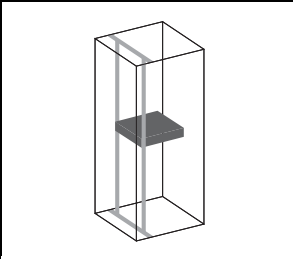
- RAL 7035

#### Supply includes:

- Component shelf, vented
- Telescopic slides with mounting kit



# Accessories



## Drawer, 2 U, 3 U

### for one 482.6 mm (19") mounting level

For front attachment to mounting angles, 482.6 mm (19"). With cover and telescopic slides to accommodate assignment lists, operating manuals and small parts. The small version of the 2 U variant is also suitable for mounting inside a swing frame.

### Material:

- Sheet steel

### Supply includes:

- Drawer fully assembled including security lock 12321

Height	Clearance openings		Installation depth mm	Colour		P. of	Model No.
	Width mm	Depth mm		RAL 7035	RAL 9005		
2 U	411	244	250	■	-	1 pc(s).	<b>7282.135</b>
2 U	411	419	427	■	-	1 pc(s).	<b>7282.035</b>
2 U	411	419	427	-	■	1 pc(s).	<b>5502.305</b>
3 U	411	419	427	■	-	1 pc(s).	<b>7283.035</b>
3 U	411	419	427	-	■	1 pc(s).	<b>5502.325</b>

## Installation kit

### for component shelves with 482.6 mm (19") adaptor sections in TS

For installation between the front and rear adaptor sections or adaptor pieces, 482.6 mm (19") in 600 mm wide enclosures.

### Material:

- Sheet steel

### Surface finish:

- Zinc-plated

### Supply includes:

- Assembly parts

### For enclosure system TS

For enclosure depth mm	P. of	Model No.
600	2 pc(s).	<b>8800.560</b>
800	2 pc(s).	<b>8800.580</b>

Max. depth of component shelves = Enclosure depth - 100 mm



### Also required:

- Adaptor sections, 482.6 mm (19") or
- Adaptor pieces, 482.6 mm (19")
- Component shelf, 482.6 mm (19") installation 7144.035, 7145.035

## 482.6 mm (19") fastener, 1 U

### with contact

For simple screw connection of installation components within the 482.6 mm (19") mounting level. Simply slide onto the mounting angle from the inside and lock home.

### Benefits:

- Fast positioning and installation instead of using individual cage nuts
- Integral contacting for potential equalisation
- Preconfigured 1 U support with 3 cage nuts, including centre attachment to standard EIA 310
- Supports multiple dismantling and reuse

### Material:

- Sheet steel, zinc-plated

Thread	P. of	Model No.
M5	24 pc(s).	<b>2090.000</b>

### Note:

- All enclosures in the Rittal range have already been tested within their tolerances for the use of 482.6 mm (19") fasteners. Suitability for use in enclosures from other manufacturers cannot be guaranteed.



### Also required:

- Assembly screws
- Multi-tooth screws 7094.130



## Cable routing bars

For structured routing of entire cable bundles, the cable bars may be secured to a variety of different positions inside the enclosure.  
Individual chambers H x D: 34 x 80 mm

### Material:

- Support: Sheet steel
- Cable routing bars, connection combs: Plastic

### Colour:

- RAL 9005

### Supply includes:

- Cable routing bars
- Connection combs



## 482.6 mm (19") attachment

For horizontal cable routing within the distributor level.

Thanks to their open mounting holes, they can also be retrospectively slotted onto the 482.6 mm (19") system punchings of the mounting level at any time and secured with the existing assembly screws of the installed components.

U	No. of connection combs	P. of	Model No.
4	2 pc(s).	4 pc(s).	<b>7111.224</b>
1	5 pc(s).	10 pc(s).	<b>7111.214</b>



## All-round attachment for universal use

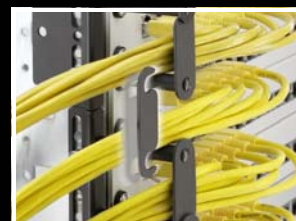
For vertical and horizontal cable routing inside the enclosure or within the distributor level.

U	No. of connection combs	P. of	Model No.
4	2 pc(s).	4 pc(s).	<b>7111.222</b>
1	5 pc(s).	10 pc(s).	<b>7111.212</b>



## Connection comb

For connecting individual cable routing bars into complete systems (included with the supply).



## Nylon tape holder

- For simple, fast cable attachment
- Tool-free mounting in the system punchings with 10.5 x 12.5 mm, with a quarter rotation
- Direct use on the horizontal TS frame section, on the support strips and mounting angles of the TS IT 482.6 mm (19") interior installation, on the cable route or on punched sections with mounting flanges
- Length of nylon tape: 400 mm

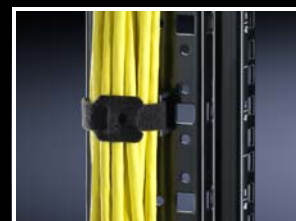
P. of	Model No.
10 pc(s).	<b>5502.155</b>

### Material:

- Plastic

### Supply includes:

- 10 nylon tapes
- 10 holders



## Blanking panel, 3 U

### Tool-free attachment, 482.6 mm (19")

The blanking panel is used to seal unused areas within the 482.6 mm (19") mounting level. Quick tool-free attachment means that it is easily integrated anywhere, and can also be removed again if necessary. The consistent use of blanking panels ensures targeted air routing in partially populated racks.

### Benefits:

- Fire protection: Self-extinguishing to UL 94 HB
- May be adjusted individually to size by snapping off prepunched 1 U elements
- Each individual element is self-supporting and may therefore be combined into larger units in conjunction with other elements

P. of	Model No.
3 pc(s).	<b>7151.305</b>

### Material:

- Plastic

### Colour:

- RAL 9005

### Supply includes:

- Blanking panel, 3 U, with integral quick-fastening



# Accessories



## IT LED system light

**for IT enclosure systems and IT enclosures**  
For optimum illumination of a network enclosure.

### Design:

All-insulated, with internal fuse (T 2A) for operation with Europlug (to CEE 7/16) and IEC 320 connector

### Benefits:

- It can be switched both manually and automatically via an optional door contact switch when the door is opened.
- Optimum illumination of the entire enclosure
- Fast, plug & play assembly
- Optionally with clip, screw and magnetic attachment
- Ready to use immediately, thanks to plug-in connection cable
- Attachment with no loss of U in the rack.

### Colour:

- Housing: RAL 7016

### Supply includes:

- LED IT system light
- Mounting kit magnet
- Assembly screws

### Material:

- Light body: Extruded aluminium
- Light cover: Polycarbonate (halogen-free)
- Light ends: PC-ABS (halogen-free)

Luminous flux	600 lm
Light colour	4000 K (neutral white)
Rated operating voltage	100-240 V AC 50/60 Hz
Protection class	II (all-insulated)
W x H x D mm	337 x 55 x 23
Approvals	ENEC, cUL, UL
P. of	1 pc(s).
<b>Model No.</b>	<b>7859.000</b>

### Installation options:

- Screw-fasten or clip directly onto the TS enclosure frame
- TE 8000, IT enclosure, AE, CM, TP: with mounting kit magnet
- AE: with rail for interior installation

### Note:

- The two plug-in connection cables should only be used with the IT LED system light. Use with all other Rittal system lights or external products is inadmissible. Cascading of multiple IT LED system lights is not possible.



### Also required:

- Connection cable 7859.010/.020



### Accessories:

- Door contact switch 2500.460/.470



## Connection cable

**for IT LED system light**

### Benefit:

- Ready to connect

### Colour:

- Black

### Note:

- The two plug-in connection cables should only be used with the IT LED system light. Use with all other Rittal system lights or external products is inadmissible. Cascading of multiple IT LED system lights is not possible.

	Connector type	Length m	P. of	Model No.
1	Europlug EN 50075, CEE 7/16, type: H05VV-F, 2 x 0.75 mm <sup>2</sup>	2	1 pc(s).	<b>7859.010</b>
2	IEC 60 320 C18 connector UL version, to fit IEC 60 320 C13 sockets type: SJT 2 x 18 60D SJT 2 x 18 60D	2	1 pc(s).	<b>7859.020</b>



## Socket strip

### Earthing-pin, with plastic housing

Robust 8-way earthing-pin socket strip in a plastic housing. The strip may be mounted vertically on the enclosure frame or in the 482.6 mm (19") section. 2.5 U are required for 482.6 mm (19") installation. The earthing-pin inserts are arranged at an angle of 45° so that angular connectors are also easily used. The connection cable is attached to a terminal connection (behind a removable cover) in the socket strip. The socket strip has a terminal for an external earthing connection.

### Technical specifications:

- Connector type F (CEE 7/3)
- Rated operating voltage: 230 V
- Rated current: 16 A
- Connection cable: Type H05VV-F3G1.5 (black) with wire end ferrules
- Length: 2 m
- Dimensions: W x H x D: 483 x 74 x 45 mm

Socket strip	P. of	<b>Model No.</b>
8-way, earthing-pin	1 pc(s).	<b>7000.630</b>

### Supply includes:

- 1 socket strip
- Assembly parts

### Material:

- Plastic (grey/black)

### Approvals:

- CE
- RoHS

## Power Distribution Unit

### Benefits:

- With the compact PDU, any IT rack is easily equipped with a professional power distribution system
- With the TS IT rack, assembly is tool-free
- Compact design
- Easy to assemble
- Power-saving design, minimal inherent consumption by the PDU itself, thanks to the use of bistable relays and OLED display with power-saving function
- Integral web server for direct network connection with extensive user administration (not with PDU basic/slave PDU)
- Redundant power supply from all 3 phases and additionally via an existing PoE (Power over Ethernet) network
- Extensive range of management and monitoring functions
- High-MTBF and measurement accuracy of 1%
- CAN bus for connecting slave PDUs (not with PDU basic)
- Ambient monitoring with up to 4 CMC III sensors (temperature, humidity, access, vandalism)

### PDU design variants:

#### PDU basic

- Robust, compact basic power distributor for the IT environment

#### PDU metered

- Energy measurement per phase, i.e. output requirement of an entire IT rack

#### PDU switched

- Measurement function per phase and individually switchable output slots

#### PDU managed

- High-end IT rack, power distribution with energy measurement and monitoring functions for each individual output slot

#### Material:

- Extruded aluminium section, black

#### Protection category IP to IEC 60 529:

- IP 20

#### Standards:

- EN 60 950
- EN 61 000-4
- EN 61 000-6
- EN 55 022

#### Low Voltage Directive:

- 2014/35/EU

#### EMC directive:

- 2014/30/EU

Photo shows a configuration example with equipment not included in the scope of supply



### PDU international, basic version

No. of phases	Power		Pin patterns			Dimensions		Model No.
	Phase current A	Output kW	Input	Outputs C13	Outputs C19	PDU length mm	Minimum enclosure height mm	
1	16	3.6	CEE	24	4	970	1200	<b>7955.110</b>
1	32	7.2	CEE	24	4	1115	1800	<b>7955.111</b>
3	16	11	CEE	18	3	845	1200	<b>7955.131</b>
3	16	11	CEE	24	6	1145	1800	<b>7955.132</b>
3	32	22	CEE	24	6	1365	1800	<b>7955.133</b>
3	32	22	CEE	36	6	1710	2000	<b>7955.134</b>
3	16	11	CEE	42	-	1405	1800	<b>7955.135</b>

### PDU international, metered version

No. of phases	Power		Pin patterns			Dimensions		Model No.
	Phase current A	Output kW	Input	Outputs C13	Outputs C19	PDU length mm	Minimum enclosure height mm	
1	16	3.6	C20	12	-	710	1200	<b>7955.201</b>
1	16	3.6	CEE	24	4	1225	1800	<b>7955.210</b>
1	32	7.2	CEE	24	4	1370	1800	<b>7955.211</b>
3	16	11	CEE	18	3	1100	1200	<b>7955.231</b>
3	16	11	CEE	24	6	1395	1800	<b>7955.232</b>
3	32	22	CEE	24	6	1620	2000	<b>7955.233</b>
3	32	22	CEE	36	6	1960	2200	<b>7955.234</b>
3	16	11	CEE	42	-	1665	2000	<b>7955.235</b>
3	32	22	CEE	48	-	2050	2200	<b>7955.236</b>
3	63	44	CEE	12	12	3 U	1200	<b>7955.238</b>

## PDU mounting adaptor

### for TE

For installing the power distribution unit PDU in the zero U space of the TE. The divider kit included with the supply of the PDU is required for mounting.

#### Material:

- Sheet steel, zinc-plated

#### Supply includes:

- Assembly parts

P. of	Model No.
2 pc(s).	<b>7000.688</b>



# Rittal – The System.

Faster – better – everywhere.

- Enclosures
- Power Distribution
- Climate Control
- IT Infrastructure
- Software & Services

You can find the contact details of all Rittal companies throughout the world here.



[www.rittal.com/contact](http://www.rittal.com/contact)

ENCLOSURES

POWER DISTRIBUTION

CLIMATE CONTROL

IT INFRASTRUCTURE

SOFTWARE & SERVICES



FRIEDHELM LOH GROUP