

# Rittal – The System.

Faster – better – everywhere.



## ▶ Open Hardware. Open Software. Open Future.

Rittal solutions – efficient, flexible and scalable.



ENCLOSURES

POWER DISTRIBUTION

CLIMATE CONTROL

IT INFRASTRUCTURE

SOFTWARE & SERVICES



FRIEDHELM LOH GROUP

# Rittal – The System.

Faster – better – everywhere.

## Open Compute Project (OCP)

Big data is a subject which is shaking up many areas of industry, commerce and trade. It is not only that data volumes are increasing exponentially. Perhaps even more important is that efficient and fast data processing will in future be more and more decisive for business success.

The OCP community came together to find solutions to this challenge. The prime objective of the Open Compute Project (OCP) is to reduce the investment and operating costs, energy consumption and environmental impact of data centres by way of innovative, fully standardised IT architectures. To this end, the OCP provides an open platform for the sharing of ideas and know-how, as a vehicle for the definition of ground-breaking standards for the data centre of the future.



“We have been developing around Open Compute for a number of years and had great success. The Gold membership is an important step forward allowing us to solidify ourselves as a key member of the community.”  
Andrew Gill, Vice President Engineering at Rittal CSM UK

## IT infrastructure – Architectures for the future

As a leading manufacturer of IT architectures, Rittal is proud to be a member of the OCP community. Expertise in the standardisation of data centre architectures, in particular, has established Rittal’s reputation as a strong partner when it comes to demanding OCP-related tasks.

Rittal offers both preconfigured modules and ready-to-use standardised data centres, not only as “off-the-shelf” products, but also as individually tailored systems for smaller companies and flexibly scalable container solutions.

ENCLOSURES

POWER DISTRIBUTION

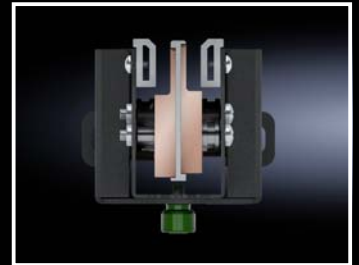
CLIMATE CONTROL

# Proven rack design for Open Compute

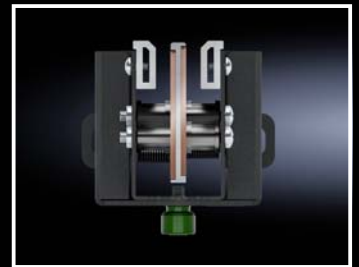
- Meets v1.2 and 2.0 Open Rack standard
- UL/CE listed
- 12 V DC/48 V DC
- 13.2 kW – 40 kW
- 21" to 19" bridging adaptors
- Shelves configurable in 1 OU increments
- Common frame, modular busbars



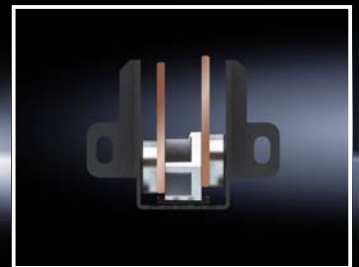
Modular busbar system  
12 V DC to 48 V DC utilising  
identical Open Rack



48 V DC / 36 kW



48 V DC / 15 kW



12 V DC / 6.6 – 13.2 kW

IT INFRASTRUCTURE

SOFTWARE & SERVICES



# Rittal – The System.

Faster – better – everywhere.



ENCLOSURES

POWER DISTRIBUTION

CLIMATE CONTROL

FRIEDHELM LOH GROUP

# More flexibility in system expansion

The rack can be equipped with side panels and a range of doors to suit a standalone or bayed configuration and the adaptability to divide the rack into split zones, providing up to 19.8 kW in one or 6.6 kW in another, along with a central divider shelf enables CO-LO deployments.

## Door

- Range of lock options available, from standard keyed swing handle to electronic combination or swipe card access

## Side panel

- Sheet steel one piece for end of row instalment
- Fabric panel version available as divider panel, ensuring no increase on footprint of bayed racks



IT INFRASTRUCTURE

SOFTWARE & SERVICES



# Rittal – The System.

Faster – better – everywhere.



ENCLOSURES

POWER DISTRIBUTION

CLIMATE CONTROL

FRIEDHELM LOH GROUP

# Variable interior

IT equipment shelves are available in 1 OU and 3 OU heights as well as the standard 2 OU and with new EIA adaptors the interior can be configured to suit customers requirements.

## Adaptor

- Standard 1 U 19" tool-free adaptor
- Special 19" front/rear EIA angle in various heights to accommodate multiple 19" equipment

## IT equipment shelves

- The shelves help to adapt your cabinet to the various server heights
- Available in 1 up to 3 OU



IT INFRASTRUCTURE

SOFTWARE & SERVICES



# Rittal – The System.

Faster – better – everywhere.

- Enclosures
- Power Distribution
- Climate Control
- IT Infrastructure
- Software & Services

For more information  
please contact:  
[ocp@rittal.com](mailto:ocp@rittal.com)

You can find the contact details of all  
Rittal companies throughout the world here.



[www.rittal.com/contact](http://www.rittal.com/contact)

XWWW00129ENT1803

ENCLOSURES

POWER DISTRIBUTION

CLIMATE CONTROL

IT INFRASTRUCTURE

SOFTWARE & SERVICES



FRIEDHELM LOH GROUP