

Rittal – The System.

Faster – better – everywhere.

► **More efficiency – with
the base/plinth system VX**

ENCLOSURES POWER DISTRIBUTION CLIMATE CONTROL IT INFRASTRUCTURE SOFTWARE & SERVICES

FRIEDHELM LOH GROUP



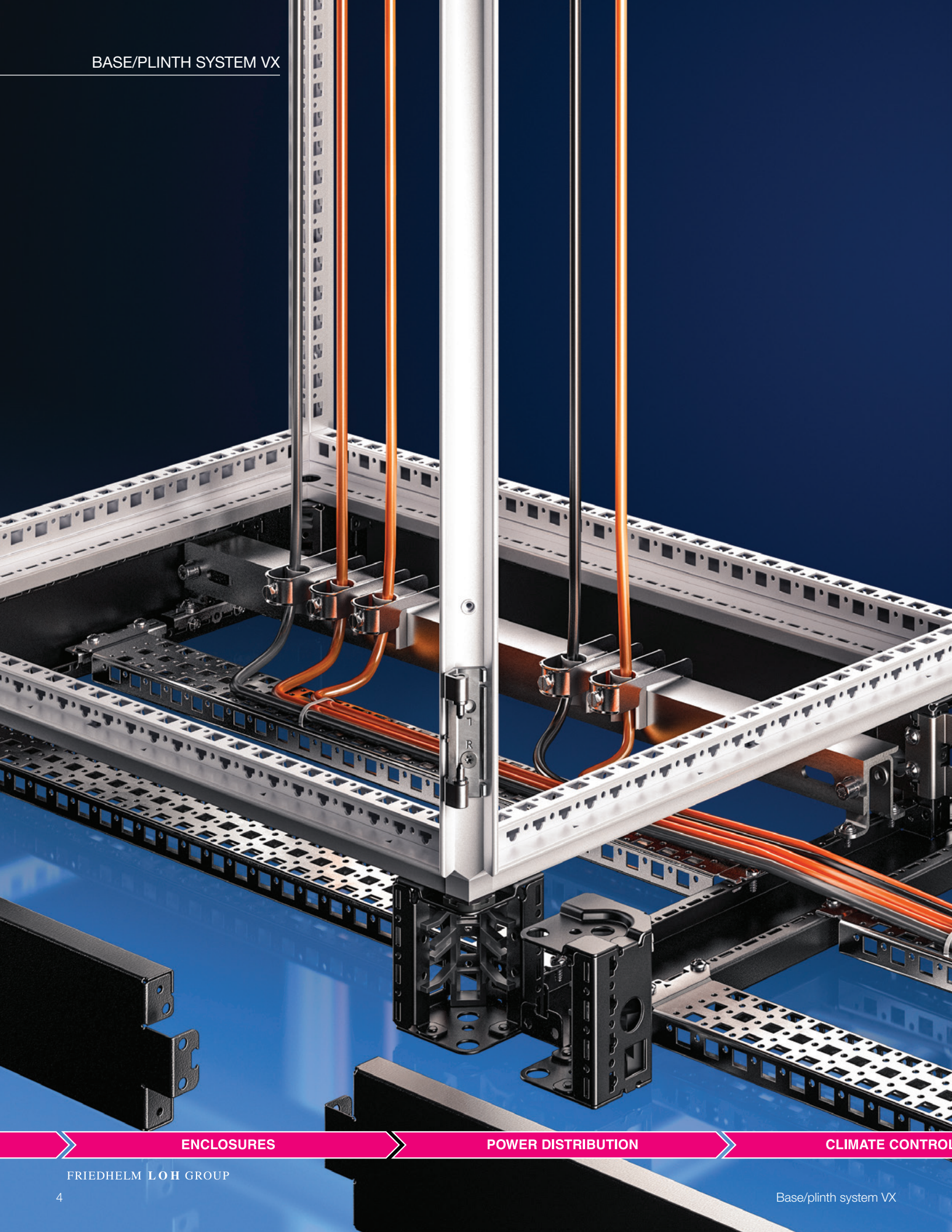


MORE EFFICIENCY

The best of everything – The base/plinth system VX suits almost any enclosure application. It combines the best of all existing Rittal base/plinth functions in one variable modular system, giving you extra space, more user-friendly assembly, time savings and additional flexibility, despite a smaller number of parts.

Fast, simple and backward-compatible – The VX system, with its largely tool-free mounting, simplifies assembly, configuration and buying, while at the same time saving time, parts and warehousing costs. It replaces the base/plinth systems TS and Flex-Block. All components are optimized to the VX25 baying enclosure system, and are backward-compatible with enclosure systems TS, TS IT, SE, CM, TP, PC, IW and TE.





ENCLOSURES

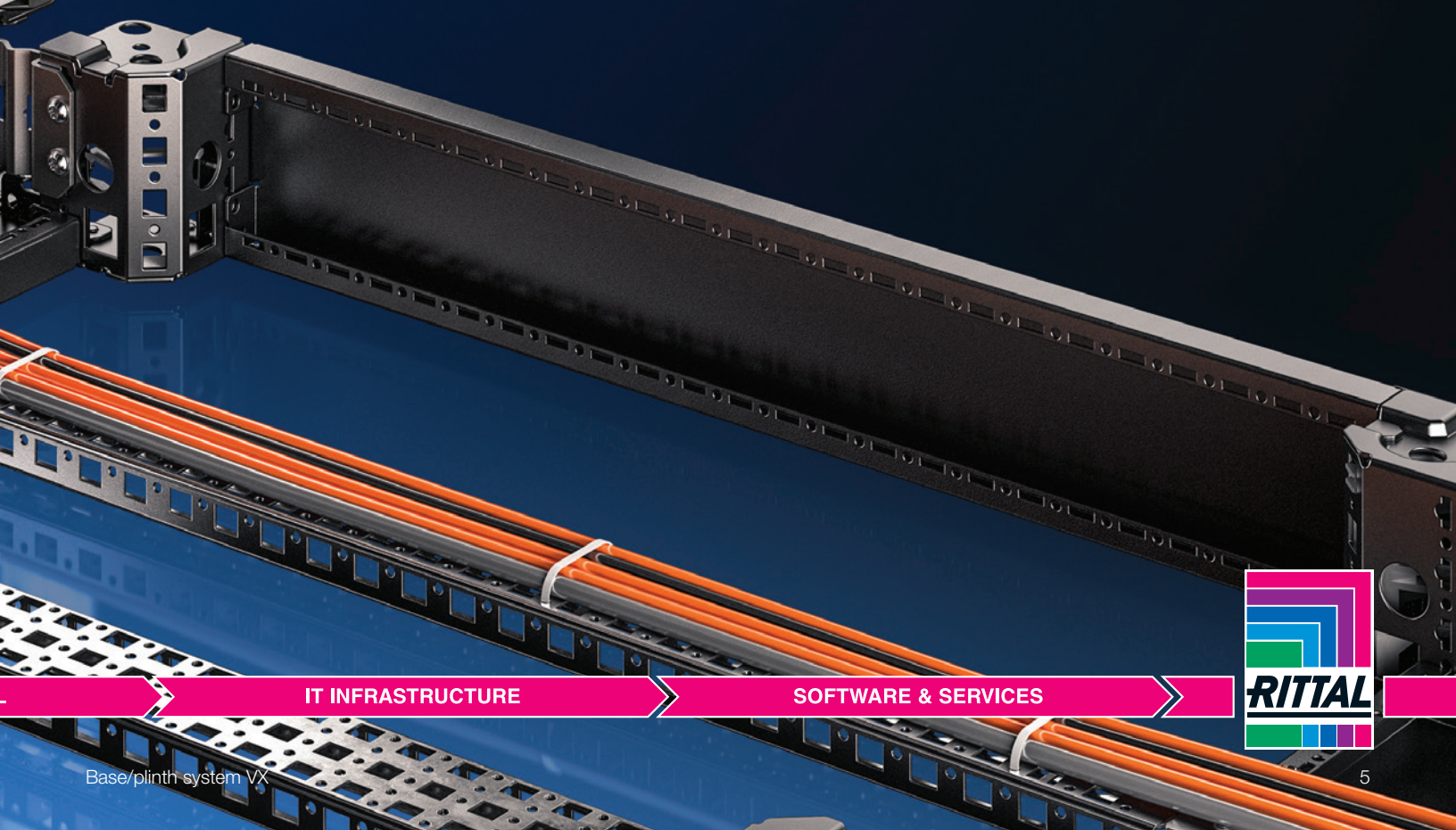
POWER DISTRIBUTION

CLIMATE CONTROL

MORE SPACE

Create extra space – The base/plinth system VX is more than just a stable enclosure base with a protective function. In fact, it includes the entire base/plinth area underneath the enclosure, e.g. for accommodating cables or for seamless, secure cable routing from enclosure to enclosure.

Use more space flexibly – The option of partially or wholly eliminating the symmetrical trim panels, the consistent system punchings, and the simplified mounting of the punched sections and rails transform the base/plinth into a flexibly configurable space extension to the enclosure, open at the top.

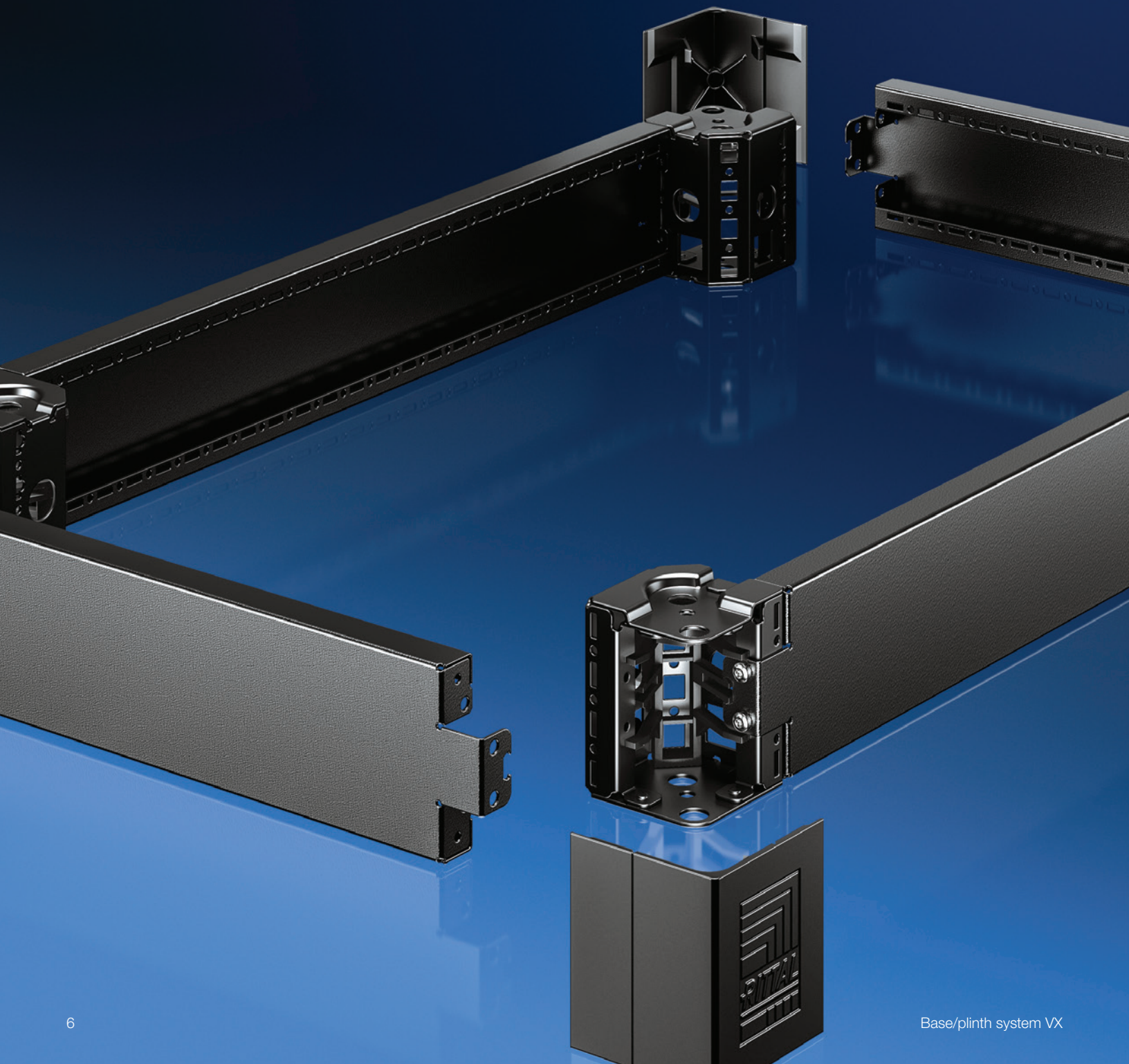


IT INFRASTRUCTURE

SOFTWARE & SERVICES



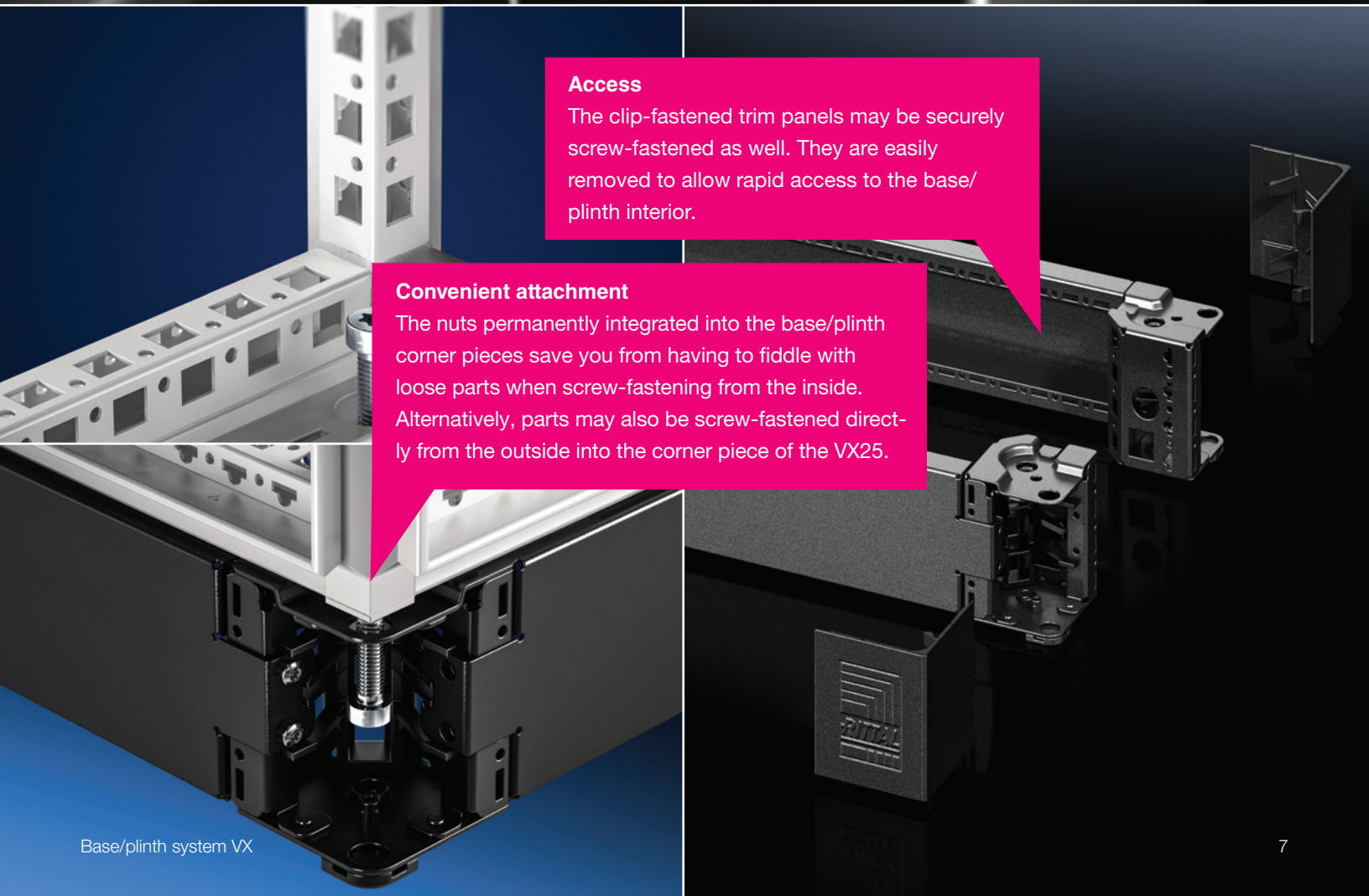
MORE CONVENIENT ASSEMBLY





Positioning aid

The precise, anti-twist mounting of the base/plinth on the enclosure is simplified by a practical positioning aid on the VX25.



Access

The clip-fastened trim panels may be securely screw-fastened as well. They are easily removed to allow rapid access to the base/plinth interior.

Convenient attachment

The nuts permanently integrated into the base/plinth corner pieces save you from having to fiddle with loose parts when screw-fastening from the inside. Alternatively, parts may also be screw-fastened directly from the outside into the corner piece of the VX25.

MORE TIME SAVINGS





Baying

Baying is convenient, either by folding out the trim panel in the depth, or via the stable baying bracket of the VX25.



Transportation

The dimensions, designed to fit standard lifting trucks, ensure that even bayed enclosures are easily transported at any time.



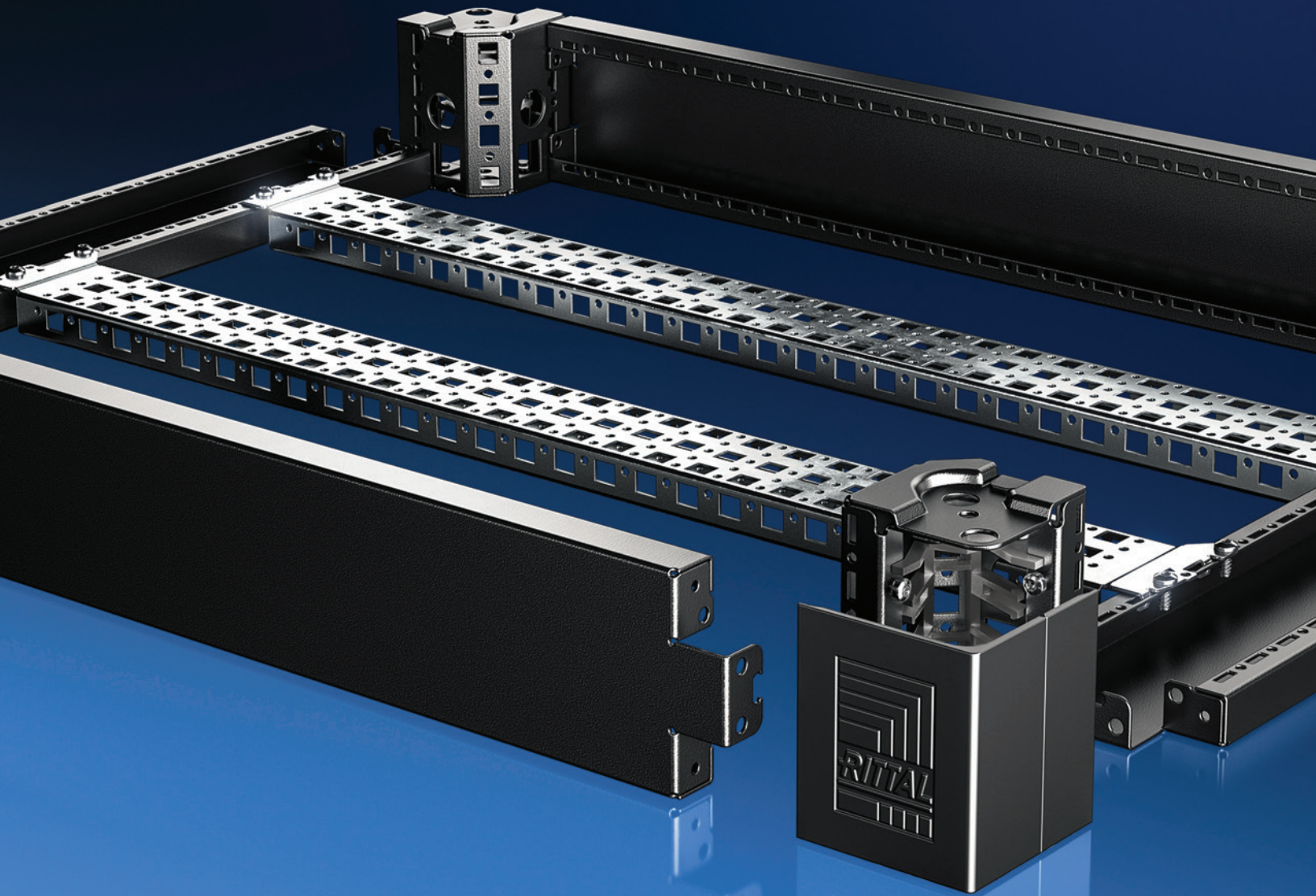
Base/plinth system VX



Cable management

Cables are securely routed and attached via the punched section with mounting flange in the base/plinth, for time and space savings.

MORE FLEXIBILITY





Multi-use

The system accessories, such as cable clamp rails, may be used directly with the aid of the base/plinth installation bracket, even with a vertically fitted trim panel.



Base mounting

The base mounting plate allows retrospective attachment to the base, even where the base/plinths are already screw-fastened to the enclosure.



Leveling

The stable design of the leveling components compensates for floor irregularities of up to 15 mm, even with fully configured enclosures.

Base/plinth

Base/plinth system VX

Modular base/plinth diversity

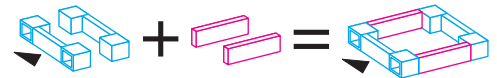
The new, innovative base/plinth system VX offers an unprecedented diversity of functions and applications. It combines all existing base/plinth functions in a single solution, as well as opening up many new applications. As if that weren't enough, it is also backward-compatible with existing enclosure solutions TS, TS IT, SE, CM, TP, PC, IW and TE. In short, it is a base/plinth system.

The base/plinth system VX comprises the following components:

- Base/plinth corner pieces with base/plinth trim panels, front and rear
- Base/plinth trim panels, sides

Due to fully symmetrical corner pieces, and by using the same base/plinth trim panels in the width and depth, the system opens up many new applications. For example, the vented trim panels and trim panels with brush strips available as accessories may now optionally be attached at the sides, or exchanged for the front/rear trim panels.

All trim panels may optionally be clipped into the corner piece, or screw-fastened. Depending on the application, for example, users can dispense with the trim panels between bayed enclosure suites, or a 100 mm high trim panel may be used to stabilize the base/plinth corner pieces. In combination with its extensive range of accessories, and due to its compatibility with enclosure accessories, the base/plinth system VX offers almost infinite possibilities in terms of siting, transportation, cable routing, cable attachment and base/plinth configuration.



One Model No. for the **base/plinth corner pieces with base/plinth trim panels, front and rear**

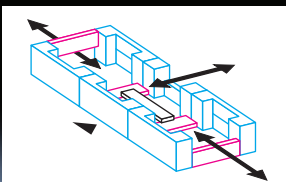
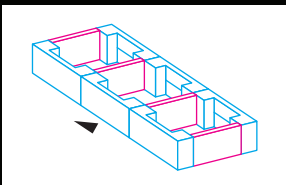
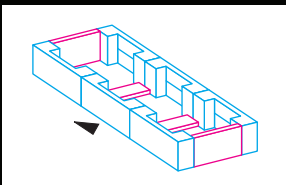
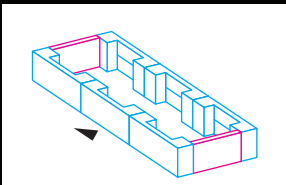
One Model No. for the **base/plinth trim panels, sides**

One complete **base/plinth VX**

Base/plinth	Basic form	Cable entry options				Stabilization of bayed base/plinths
100 mm (4 in.)						
200 mm (8 in.)						

Configuration examples

Order includes	Functional benefits
3 packs Base/plinth corner pieces with base/plinth trim panels 1 pack Base/plinth trim panels, sides 200mm (8") high	Continuous cable chamber
3 packs Base/plinth corner pieces with base/plinth trim panels 1 pack Base/plinth trim panels, sides, 200 mm (8") high 1 pack Base/plinth trim panels, sides, 100 mm (4") high 1 pack Baying brackets, internal (8617.500, packs of 6) 4 pc(s). are required for this solution	Additional stability during transportation with base/plinth trim panels rotated through 90°
3 packs Base/plinth corner pieces with base/plinth trim panels 2 packs Base/plinth trim panels, sides, 200 mm (8") high	Shielding of the base/plinths from one another
Other option; ■ Cable entry at the side by fitting a 100 mm (4") base/plinth trim panel with brush strip ■ Cable entry from the rear by dismantling one or more trim panels from the base/plinth corner pieces and replacing them with trim panels with brush strips ■ Cable routing in the base/plinth by using punched sections with mounting flanges on the base/plinth trim panels	



Base/plinth system VX

Base/plinth corner pieces with base/plinth trim panels, front and rear

Sheet steel

for VX, TS, TS IT, SE, CM, TP, PC, IW, TE

High-load capacity base/plinth corner pieces with molded self-positioning to the baying enclosure system VX25, may be used with or without base/plinth trim panels depending on the application. Large openings in the corner piece for optimum access to the screw-fastening point, may be concealed with a plastic corner and baying cover.

Material:

- Base/plinth corner piece: Sheet steel
- Base/plinth trim panel front/rear: Sheet steel
- Corner and baying cover: Plastic

Color:

- RAL 9005

100 mm (4 in.) high supply includes:

- 4 base/plinth corner pieces, 100 mm (4 in.) high
- 4 corner covers
- 1 baying cover
- 2 base/plinth trim panels, front/rear, 100 mm (4 in.) high
- Assembly parts

200 mm (8 in.) high supply includes:

- 4 base/plinth corner pieces, 200 mm (8 in.) high
- 4 corner covers
- 1 baying cover
- 1 base/plinth trim panel, front/rear, 200 mm (8 in.) high
- 2 base/plinth trim panels, front/rear, 100 mm (4 in.) high
- Assembly parts

100 mm (4 in.) high

For enclosure width mm (in.)	Model No.
300 (12)	8620.000
400 (16)	8620.001
600 (24)	8620.002
800 (32)	8620.003
850 (34)	8620.004
1000 (40)	8620.005
1100 (44)	8620.006
1200 (48)	8620.007
1600 (63)	8620.008
1800 (71)	8620.009

200 mm (8 in.) high

For enclosure width mm (in.)	Model No
300 (12)	8620.020
400 (16)	8620.021
600 (24)	8620.022
800 (32)	8620.023
1000 (40)	8620.024
1200 (48)	8620.025
1600 (63)	8620.026
1800 (71)	8620.027



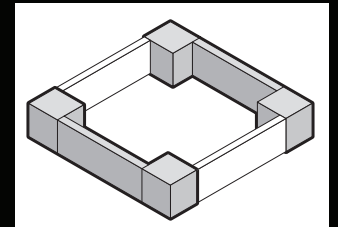
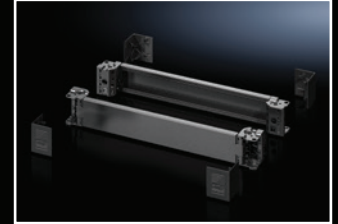
Also required:

- Base/plinth trim panels, sides, to finish off a unit, for additional stabilization between base/plinths, or for interior configuration, see page 14



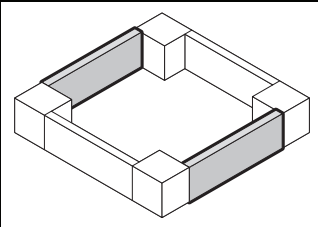
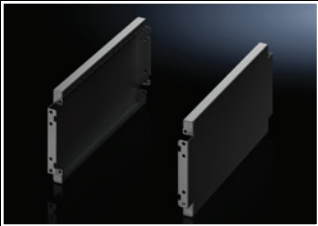
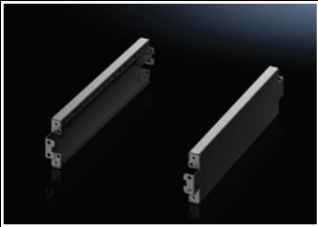
Accessories:

- Base/plinth trim panels with brush strip, see page 14
- Base/plinth trim panels, vented, see page 15
- Base/plinth installation bracket, see page 18
- Leveling component for base/plinth, see page 18
- Base mounting plate, see page 17
- Base plinth adapter for twin casters and leveling feet, see page 21
- Baying bracket, internal, see page 16
- Transport casters for base/plinth VX, see page 17



Base/plinth

Base/plinth system VX



Base/plinth trim panels, sides

Sheet steel

To finish off a base/plinth unit at the sides and for additional stabilization or for the interior configuration of bayed base/plinths. One 200 mm (8 in.) or two 100 mm (4 in.) high trim panels may optionally be fitted on 200 mm (8 in.) high base/plinths.

Material:

- Sheet steel

Color:

- RAL 9005

Supply includes:

- 2 base/plinth trim panels
- Assembly parts

100 mm (4 in.)

For enclosure depth mm (in.)	Model No.
300 (12)	8620.030
400 (16)	8620.031
500 (20)	8620.032
600 (24)	8620.033
800 (32)	8620.034
1000 (40)	8620.035
1200 (48)	8620.036

200 mm (8 in.) high

For enclosure depth mm (in.)	Model No
300 (12)	8620.040
400 (16)	8620.041
500 (20)	8620.042
600 (24)	8620.043
800 (32)	8620.044
1000 (40)	8620.045
1200 (48)	8620.046



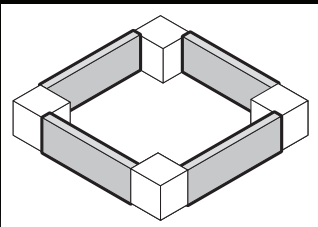
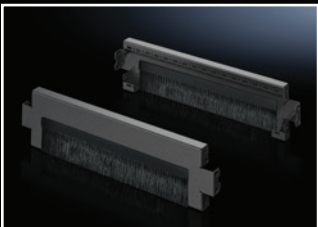
Accessories:

- Base/plinth installation bracket, see page 18



Possible alternative:

- Base/plinth trim panels with brush strip, see page 14
- Base/plinth trim panels, vented, see page 15



Base/plinth trim panels with brush strip

Sheet steel

For cable entry in the base/plinth. With a base/plinth height of 200 mm (8 in.), one or two trim panels with brush strips may optionally be used. Due to the complete symmetry of the base/plinth system VX, the trim panels with brush strip may either be fitted at the front, rear or side on the base/plinth corner piece.

Material:

- Base/plinth trims: Sheet steel
- Brush strip: Plastic, self-extinguishing

Color:

- RAL 9005

Supply includes:

- 2 base/plinth trim panels with brush strip
- Assembly parts

For enclosure width/depth mm (in.)	Model No.
600 (24)	8620.092
800 (32)	8620.093
1000 (40)	8620.094
1200 (48)	8620.095

Base/plinth

Base/plinth system VX

Base/plinth trim panels, vented

Sheet steel

For venting the enclosure via the base/plinth. Specifically in applications such as power distribution where the enclosure gland plates are not used, this can be used to achieve a higher air throughput inside the enclosure. Various solutions to raise the roof and special roof plates with vent openings are also available for enclosure venting. With a 200 mm (8 in.) base/plinth height, one or two vented trim panels may optionally be used. Due to the complete symmetry of the base/plinth system VX, the vented trim panels may either be fitted at the front, rear or side on the base/plinth corner piece.

Material:

- Sheet steel

Color:

- RAL 9005

Supply includes:

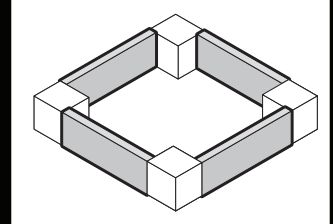
- 2 base/plinth trim panels, vented
- Assembly parts for mounting on the base/plinth corner piece

For enclosure width/depth mm (in.)	Model No.
600 (24)	8620.090
800 (32)	8620.091



Accessories:

- Base/plinth installation bracket, see page 18
- Filter mat, see page 15



Filter mat

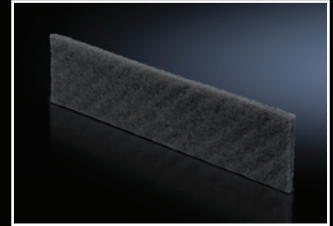
for base/plinth trim panel, vented

The filter mat is simply inserted into the trim panel from the rear.

Supply includes:

- 1 roll, length 3 m (10 ft.), may be shortened to required length

P. of	Model No.
1 pc(s).	8620.100



Base/plinth corner pieces with base/plinth trim panels, front and rear

Stainless steel for VX, TS, SE

High-load capacity base/plinth corner pieces with molded self-positioning to the enclosure, may be used with or without trim panels depending on the application. Large openings in the base/plinth corner piece for optimum access to the screw-fastening point, may be concealed with a plastic corner and baying cover.

Material:

- Base/plinth corner piece: Stainless steel 1.4301 (AISI 304)
- Base/plinth trim panel front/rear: Stainless steel 1.4301 (AISI 304)
- Corner and baying cover: Plastic

Surface finish:

- Trim panels: Brushed, grain size 400

100 mm (4 in.) high supply includes:

- 4 base/plinth corner pieces, 100 mm (4 in.) high
- 4 corner covers
- 1 baying cover
- 2 base/plinth trim panels, front/rear, 100 mm (4 in.) high
- Assembly parts

200 mm (8 in.) high supply includes:

- 4 base/plinth corner pieces, 200 mm (8 in.) high
- 4 corner covers
- 1 baying cover
- 1 base/plinth trim panel, front/rear, 200 mm (8 in.) high
- 2 base/plinth trim panels, front/rear, 100 mm (4 in.) high
- Assembly parts

For enclosure width mm (in.)	Height mm (in.)	Model No.
600 (24)	100 (4)	8620.050
800 (32)	100 (4)	8620.051
1000 (40)	100 (4)	8620.052
1200 (48)	100 (4)	8620.053
600 (24)	200 (8)	8620.060
800 (32)	200 (8)	8620.061
1000 (40)	200 (8)	8620.062
1200 (48)	200 (8)	8620.063



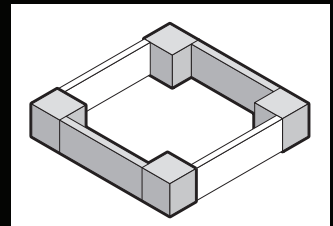
Also required:

- Base/plinth trim panels, sides, to finish off a unit, for additional stabilization between base/plinths, or for interior configuration, see page 16



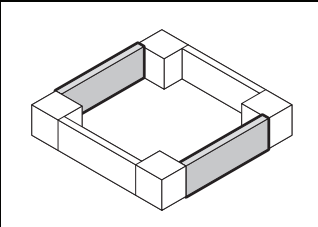
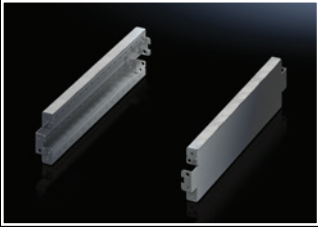
Accessories:

- Base/plinth installation bracket, see page 18
- Leveling component for base/plinth, see page 18
- Base mounting plate, see page 17
- Base plinth adapter for twin casters and leveling feet, see page 21
- Transport casters for base/plinth VX, see page 17



Base/plinth

Base/plinth system VX



Base/plinth trim panels, sides

Stainless steel

To finish off a base/plinth unit at the sides and for additional stabilization or for the interior configuration of bayed base/plinths. One 200 mm (8 in.) or two 100 mm (4 in.) high trim panels may optionally be fitted on 200 mm (8 in.) high base/plinths.

Material:

- Base/plinth trim panels: Stainless steel 1.4301 (AISI 304)

Surface finish:

- Brushed, grain size 400

Supply includes:

- 2 base/plinth trim panels
- Assembly parts

For enclosure depth mm (in.)	Height mm (in.)	Model No.
400 (16)	100	8620.070
500 (20)	100	8620.071
600 (24)	100	8620.072
400 (16)	200	8620.080
500 (20)	200	8620.081
600 (24)	200	8620.082



Accessories:

- Base/plinth installation bracket, see page 18

Baying bracket, internal

- Fast, secure installation either from the front or from the side
- For all-round installation on the baying joint
- May be flexibly positioned to avoid collisions with installed equipment
- Also suitable for baying the VX base/plinth system

Material:

- Sheet steel

Surface finish:

- Zinc-plated

Supply includes:

- Baying bracket, internal
- Baying seal
- Assembly parts

P. of	Model No.
6 pc(s).	8617.500

Base/plinth

Base/plinth system VX

Transport casters

For locating onto the base/plinth corner piece, 100 mm (4 in.) or 200 mm (8 in.) high.

Load capacity:

- Maximum permissible load per twin caster: 1000 N (23 lb)

Supply includes:

- 4 twin casters, 2 x width, 2 x without locks

Color:

- Ral 9005

Floor clearance mm (in.)	Model No.
100 (4)	8100.700



Accessories:

- Base/plinth trim panels, sides, for stabilization, see page 14



Base mounting plate

For attaching the base/plinth to the floor.

For assembly screws up to 12 mm (.5 in.) Ø

Material:

- Sheet steel

Surface finish:

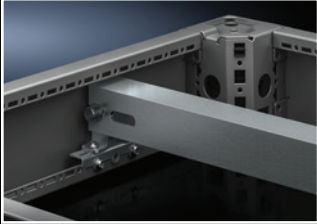
- Zinc-plated

P. of	Model No.
10 pc(s).	2817.000



Base/plinth

Base/plinth system VX



Base/plinth installation bracket

for base/plinth system VX, sheet steel and stainless steel

For configuring the base/plinth with punched sections with mounting flanges or cable clamp rails. To fit 100 (4 in.) and 200 mm (8 in.) high base/plinth trim panels in sheet steel and stainless steel.

Material:

- Stainless steel 1.4301 (AISI 304)

Supply includes:

- 2 installation brackets
- 2 mounting brackets for cable clamp rail
- Assembly parts

Note:

- For interior installation on upright base/plinth trim panels
- For base/plinth trim panels rotated through 90°, the installation bracket is not needed, because in this position, the system punchings of the base/plinth trim panels may be used directly.

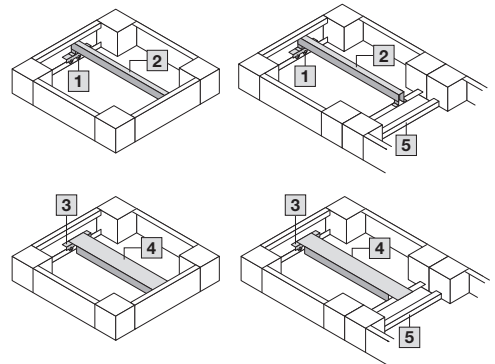
- ① Installation bracket with mounting bracket for cable clamp rail
- ② Cable clamp rail
- ③ Installation bracket
- ④ Punched section with mounting flange, 23 x 89 mm (1 x 4 in.)
- ⑤ Base/plinth trim panel, rotated through 90°

For base/plinth trim panel height mm (in.)	P. of	Model No.
100 (4)	2 pc(s).	8620.400
200 (8)	2 pc(s).	



Accessories:

- Punched section with mounting flange, see page 20
- Punched section with mounting flange see page 21
- Cable clamp rail, see page 19



Leveling component

For retrospective leveling on uneven floors at the installation site up to maximum of 15 mm (.6 in.) Installed through the base/plinth corner piece. Adjusted using a hex spanner, width across flats 19 mm (.8 in.)

Benefits:

- A door offset caused by uneven flooring can be corrected
- Installed on the assembled enclosure, i.e. no need to plan leveling in advance

Load capacity:

- Max. admissible load: 2500 N per leveling component (check the load capacity of the floor).

Supply includes:

- Assembly parts

For base/plinth height mm (in.)	P. of	Model No.
100 (4)	4 pc(s).	8100.710
200 (8)	4 pc(s).	8100.711

Base/plinth

Base/plinth system VX

Cable clamp rail

Right angle section

For strain relief with cable entry. Depth-variable mounting on a 25 mm (1 in.) pitch pattern on the horizontal enclosure section or in the base/plinth.

Material:

– Steel

Surface finish:

– Zinc-plated

Supply includes:

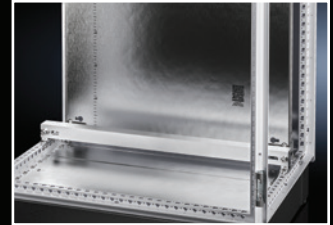
– Assembly parts

For base/plinth trim panel height mm (in.)	P. of	Model No.
400 (16)	2 pc(s).	8619.400
600 (24)	2 pc(s).	8619.410
800 (32)	2 pc(s).	8619.420
1000 (40)	2 pc(s).	8619.430
1200 (48)	2 pc(s).	8619.440
1600 (63)	2 pc(s).	8619.450
1800 (71)	2 pc(s).	8619.460



Accessories:

– Base/plinth installation bracket, see page 18



Cable clamp

for cable clamp rails

For fastening the cables to the cable clamp rails.

Material:

– Sheet steel

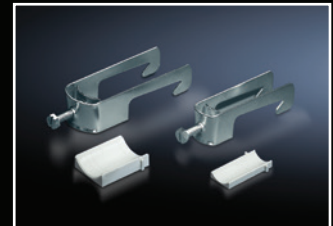
Surface finish:

– Zinc-plated

Supply includes:

– Plastic insert

For cable diameter mm (in.)	P. of	Model No.
6 – 12 (.23 – .47)	25 pc(s).	2350.000
12 – 16 (.47 – .62)	25 pc(s).	2351.000
14 – 18 (.55 – .70)	25 pc(s).	2352.000
18 – 22 (.70 – .86)	25 pc(s).	2353.000
22 – 26 (.86 – 1.02)	25 pc(s).	2354.000
26 – 30 (1.02 – 1.18)	25 pc(s).	2355.000
30 – 34 (1.18 – 1.33)	25 pc(s).	2356.000
34 – 38 (1.33 – 1.49)	25 pc(s).	2357.000
38 – 42 (1.49 – 1.65)	25 pc(s).	2358.000
42 – 46 (1.65 – 1.81)	25 pc(s).	2359.000
46 – 50 (1.81 – 1.96)	25 pc(s).	2360.000



C rail 30/15

to EN 60 715

Installation options:

- On the inner mounting level, on the enclosure section
- In combination with the base/plinth installation bracket in the VX base/plinth system.

Material:

– Sheet Steel

Surface finish:

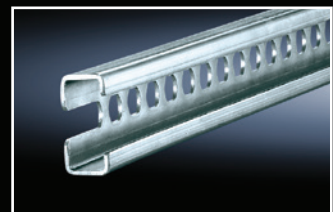
– Zinc-plated

For enclosure width/ depth mm (in.)	Length mm (in.)	P. of	Model No.
500 (20)	455 (18)	6 pc(s).	4943.000
600 (24)	555 (22)	6 pc(s).	4944.000
800 (32)	755 (30)	6 pc(s).	4945.000
1000 (40)	955 (38)	6 pc(s).	4946.000
1200 (48)	1155 (46)	6 pc(s).	4947.000



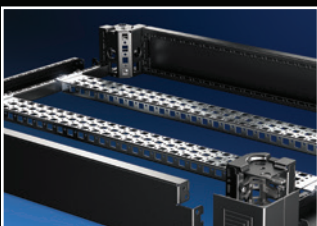
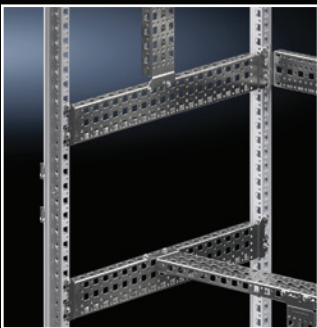
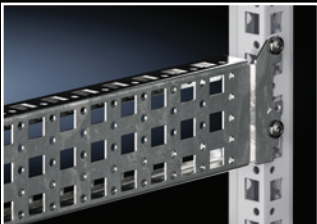
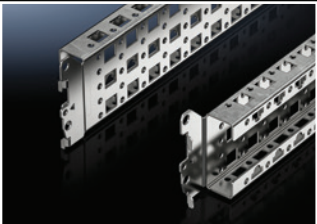
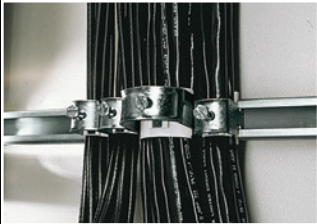
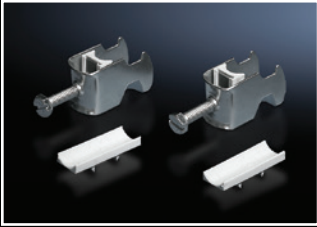
Accessories:

– Cable clamps, see page 20



Base/plinth

Base/plinth system VX



Cable clamp

for C rails

For attaching the cables to the C rails.

Material:

– Sheet steel

Surface finish:

– Zinc-plated

Supply includes:

– Plastic insert

For cable diameter mm (in.)	P. of	Model No.
6 – 14 (.23 – .55)	25 pc(s).	7077.000
12 – 18 (.47 – .70)	25 pc(s).	7078.000
18 – 22 (.70 – .86)	25 pc(s).	7097.000
22 – 26 (.86 – 1.02)	25 pc(s).	7097.220
26 – 30 (1.02 – 1.18)	25 pc(s).	7097.260
30 – 34 (1.18 – 1.33)	25 pc(s).	7097.300
34 – 38 (1.33 – 1.49)	25 pc(s).	7097.340
38 – 42 (1.49 – 1.65)	25 pc(s).	7098.000
42 – 56 (1.65 – 2.20)	25 pc(s).	7098.100
56 – 64 (2.20 – 2.51)	25 pc(s).	7099.000



Accessories:

– C rails, see from page 19

Punched section with mounting flange, 23 x 64 mm (1 x 3 in.)

For variable, individual interior installation of the enclosure frame on the inner mounting level. Simply locate into punchings and screw-fasten. System punchings on all four sides. With slots at the top and bottom for cage nuts, for attaching your own components via metric screws.

Installation options:

- On the inner mounting level, on the enclosure section
- On identical punched sections with mounting flanges
- Base/plinth system VX in the width and depth, combined with a base-plinth installation bracket

Material:

– Sheet steel

Surface finish:

– Zinc-plated

Supply includes:

– Assembly parts

Dimensions mm (in.)	P. of	Model No.
300 (12)	4 pc(s).	8617.100
400 (16)	4 pc(s).	8617.110
500 (20)	4 pc(s).	8617.120
600 (24)	4 pc(s).	8617.130
800 (32)	4 pc(s).	8617.140
1000 (40)	4 pc(s).	8617.150
1200 (48)	4 pc(s).	8617.160
1400 (55)	4 pc(s).	8617.170
1600 (63)	4 pc(s).	8617.180
1800 (71)	4 pc(s).	8617.190
2000 (79)	4 pc(s).	8617.200
2200 (87)	4 pc(s).	8617.210



Accessories:

– Base/plinth installation bracket, see page 18

Base/plinth

Base/plinth system VX

Punched section with mounting flange, 23 x 89 mm (1 x 4)

For variable, individual interior installation of the enclosure frame on the inner mounting level. Simply locate into punchings and screw-fasten. System punchings on all four sides, with slots at the top and bottom for cage nuts, for attaching your own components via metric screws. Especially for cable routing in the base/plinth system VX, stainless steel and for the installation of busbar supports (non-magnetic stainless steel).

Installation option:

- On the inner mounting level, on the enclosure section
- On identical punched sections with mounting flanges
- Base/plinth system VX, stainless steel, in the width and depth, combined with a base/plinth installation bracket

Material:

- Stainless steel

Supply includes:

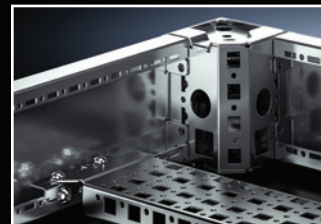
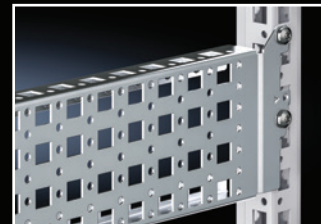
- Assembly parts

For enclosure width/depth mm (in.)	P. of	Model No.
400 (16)	2 pc(s).	8100.730
500 (20)	2 pc(s).	8100.731
600 (24)	2 pc(s).	8100.732
800 (32)	2 pc(s).	8100.733



Accessories:

- Base/plinth installation bracket, see page 18



Base/plinth adaptor

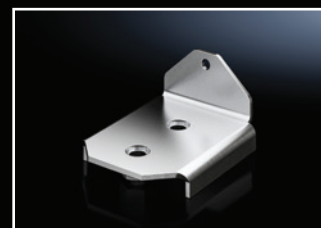
For twin casters and leveling feet

For mounting twin casters and leveling feet to the VX base/plinth system.

Material	P. of	Model No.
Sheet steel	4 pc(s).	8100.770
Stainless steel	4 pc(s).	8100.771

Note:

- When fitting twin casters, side trim panels, see page 14, are required.



Base/plinth

Base/plinth system VX



Leveling feet

18 – 43 mm (1 – 2 in.) high

To compensate for height differences with floor irregularities. Mounting thread M12.

Load capacity:

- Max. admissible load: approx. 3000 N per leveling foot

Material	P. of	Model No.
Sheet steel	4 pc(s).	4612.000
Stainless steel	4 pc(s).	8100.780



Twin casters

For mobile use, for mounting directly on the enclosure. Mounting thread M12 x 20.



Also required:

- For mounting on the base/plinth:
Base/plinth adapter for twin casters, see page 21

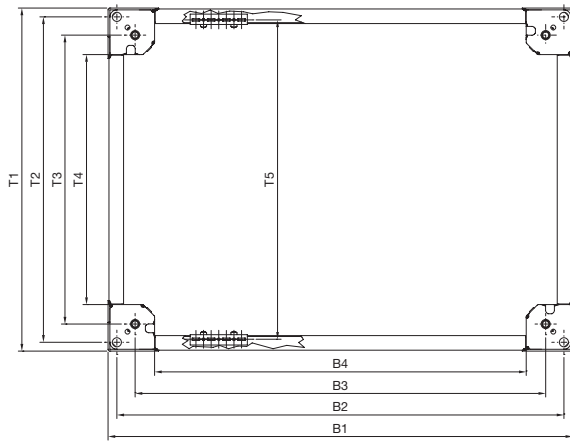
1	Maximum admissible load (per caster)	750 N
	Floor clearance	88 mm (4 in.)
	Lock	2 with, 2 without
	P. of	4 pc(s).
	Color	Black with gray running surface
	Model No.	6148.000



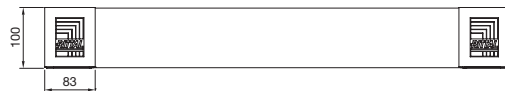
2	Maximum admissible load (per caster)	1200 N
	Floor clearance	125 mm (5 in.)
	Lock	2 with, 2 without
	P. of	4 pc(s).
	Color	Black
	Model No.	7495.000

Technical details

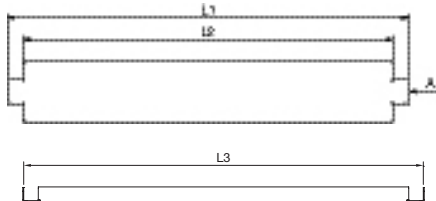
Base/plinth system VX



Base/plinth, 100 mm (4 in.) high



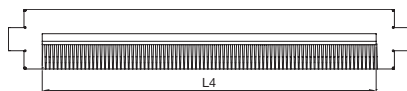
Base/plinth, trim panels, solid, 100 mm (4 in.) high, front view



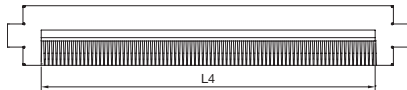
Rear view



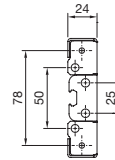
Base/plinth trim panels with brush strip, 100 mm (4 in.) high, front view



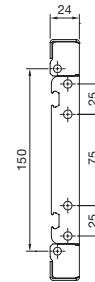
Base/plinth trim panels, vented, 100 mm (4 in.) high, front view



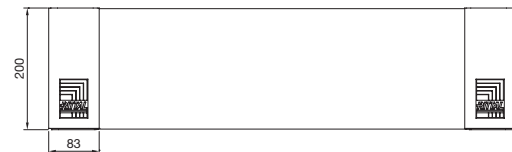
View A



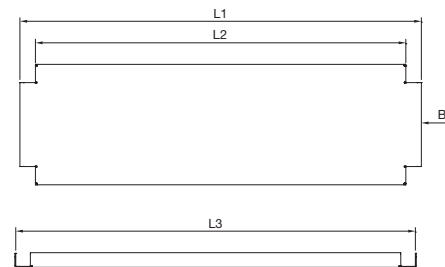
View B



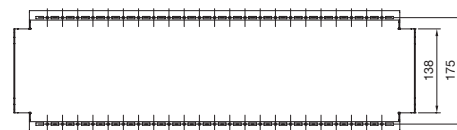
Base/plinth, 200 mm (3 in.) high



Base/plinth, trim panels, solid, 200 mm (8 in.) high, front view



Rear view



For enclosure width or depth mm	Width dimensions mm				Length dimensions mm				Depth dimensions mm				
	B1	B2	B3	B4	L1	L2	L3	L4	T1	T2	T3	T4	T5 ¹⁾
300	264	235	175	111	160	109	157	–	264	235	175	111	225
400	364	335	275	211	260	209	257	–	364	335	275	211	325
500	464	435	375	311	360	309	357	–	464	435	375	311	425
600	564	535	475	411	460	409	457	349	564	535	475	411	525
800	764	735	675	611	660	609	657	549	764	735	675	611	725
850	814	785	725	661	710	659	707	–	–	–	–	–	775
1000	964	935	875	811	860	809	857	–	964	935	875	811	925
1100	1064	1035	975	911	960	909	957	–	–	–	–	–	1025
1200	1164	1135	1075	1011	1060	1009	1057	–	1164	1135	1075	1011	1125
1600	1564	1535	1475	1411	1460	1409	1457	–	–	–	–	–	1525
1800	1764	1735	1675	1611	1660	1609	1657	–	–	–	–	–	1725

¹⁾T5 = Distance between system punchings including base/plinth installation bracket

Rittal – The System.

Faster – better – everywhere.

- Enclosures
- Power Distribution
- Climate Control
- IT Infrastructure
- Software & Services

Rittal North America LLC

Woodfield Corporate Center
425 North Martingale Road, Suite 400 • Schaumburg, Illinois 60173 • USA
Phone: 937-399-0500 • Toll-free: 800-477-4000
Email: rittal@rittal.us • Website: www.rittal.us

Rittal Systems Ltd.

6485 Ordan Drive • Mississauga, Ontario L5T 1X2 • Canada
Phone: 905-795-0777 • Toll-free: 800-399-0748
Email: marketing@rittal.ca • Website: www.rittal.ca

Rittal Mexico

Dr. Roberto Gayol 1219-1B • Col. Del Valle Sur, 03100 • Mexico, D.F.
Phone: (+52) (55) 5559-5369 • Toll-free: 01 800 8 Rittal (748.825)
Email: info@rittal.com.mx • Website: www.rittal.com.mx

US468 ■ 8/18

ENCLOSURES

POWER DISTRIBUTION

CLIMATE CONTROL

IT INFRASTRUCTURE

SOFTWARE & SERVICES

FRIEDHELM LOH GROUP

