

# Rittal – The System.

Faster – better – everywhere.

► **Cross member for VX,  
TS, SE, CM, TP, PC,  
IW, Blue e+ chiller –  
TS 8601.680**

Date : Sep 25, 2020

ENCLOSURES

POWER DISTRIBUTION

CLIMATE CONTROL

IT INFRASTRUCTURE

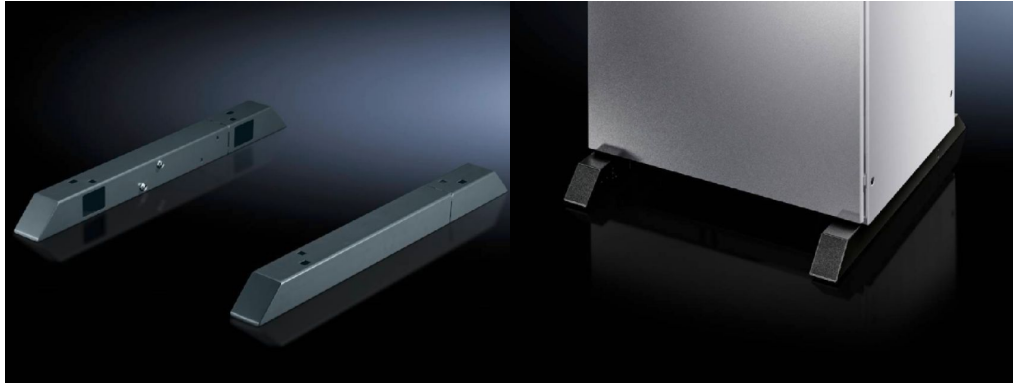
SOFTWARE & SERVICES

FRIEDHELM LOH GROUP



# Cross member for VX, TS, SE, CM, TP, PC, IW, Blue e+ chiller – TS 8601.680

: 25.09.2020 build on [www.rittal.com/ca-en](http://www.rittal.com/ca-en)



## Product description

**Description:** To increase stability, the cross member protrudes 138 mm above and below the base frame of the enclosure at the front and rear. For deeper enclosures, the rear part may be extended and screw-fastened again. For screw-fastening to the floor and enclosure with mounting hole at the sides, front and rear. The castors and leveling feet may be secured to the welded nuts M12.

**Benefits:** To increase stability  
Adjustable to the housing depth

**Material:** Carbon steel

**Surface finish:** Spray-finished

**Color:** RAL 7015

**Supply includes:** 1 cross beam, left  
1 cross beam, right

**Note:** Ensure sufficient stability to prevent the enclosure from tipping over!

## Product features

**Suitable for:** Enclosure type: VX  
Enclosure type: TS  
Enclosure type: SE  
Enclosure type: TP  
Enclosure type: PC  
Enclosure type: IW  
Depth: 600 mm (24 ")  
Depth: 800 mm (31 ")

<b>Dimensions:</b>	Height: 70 mm (2.8 ")
<b>Installation options:</b>	For screw-fastening to base and enclosure with side, front and rear mounting holes For Blue e+ chillers, the cross-beam can be used as a base/plinth component
<b>Packaging unit:</b>	2 pc(s).
<b>Weight/packaging unit:</b>	10.4 kg (22.9 lb.)
<b>Copper weight (kg per piece):</b>	0
<b>EAN:</b>	4028177382640
<b>Customs tariff number:</b>	94039010
<b>ETIM 7.0:</b>	EC000721
<b>ETIM 6.0:</b>	EC000721
<b>eCl@ss 8.0/8.1:</b>	27182003
<b>eCl@ss 6.0/6.1:</b>	27182003
<b>Product description:</b>	TS Cross member, for TS, SE, CM, TP, PC, IW, for D: 600/800 mm
<b>Approvals</b>	
<b>Certificates:</b>	EAC