

Rittal – The System.

Faster – better – everywhere.

► Base/Plinth Trim Panels with Brush Strip For VX base/plinth systems – VX 8620.092

Date : Nov 24, 2020

ENCLOSURES

POWER DISTRIBUTION

CLIMATE CONTROL

IT INFRASTRUCTURE

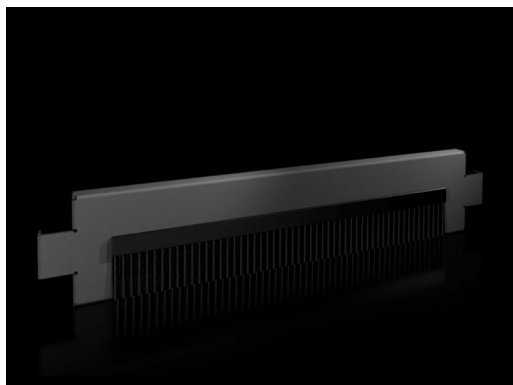
SOFTWARE & SERVICES

FRIEDHELM LOH GROUP



Base/Plinth Trim Panels with Brush Strip For VX base/plinth systems – VX 8620.092

: 24.11.2020 build on www.rittal.com/ca-en



Product description

Description:	For cable entry into the base/plinth. If the base/plinth height is 200 mm, one or two trim panels with brush strips can optionally be used. The VX base/plinth system's complete symmetry allows the trim panels with brush strips to be mounted either at the front, rear or side of the base/plinth corner piece.
Material:	Base/plinth trims: Sheet steel Brush strip: Plastic, self-extinguishing
Color:	RAL 9005
Supply includes:	Assembly components

Product features

Suitable for:	Width/depth: 600 mm (24 ")
Dimensions:	Height: 100 mm (3.9 ")
Packaging unit:	2 pc(s).
Weight/packaging unit:	1.3 kg (2.9 lb.)
Copper weight (kg per piece):	0
EAN:	4028177922457
Customs tariff	94039010

number:

ETIM 7.0: EC000721

ETIM 6.0: EC000721

eCl@ss 8.0/8.1: 27182003

eCl@ss 6.0/6.1: 27189270

Product description: VXBase/plinth trim panel, with brush strip, for W/D: 600 mm

Approvals

Approvals: UL + C-UL
