

Rittal – The System.

Faster – better – everywhere.

► Base/plinth trim panels, side, 100 mm for base/plinth system VX, sheet steel – VX 8620.033

Date : Aug 9, 2020

ENCLOSURES

POWER DISTRIBUTION

CLIMATE CONTROL

IT INFRASTRUCTURE

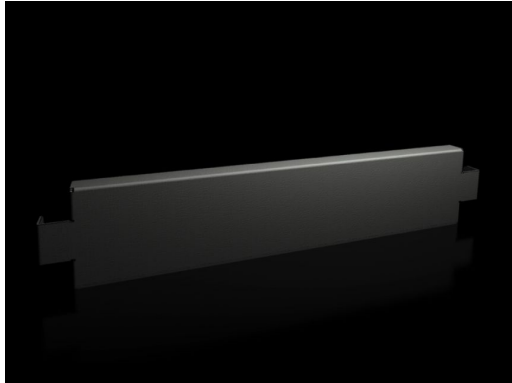
SOFTWARE & SERVICES

FRIEDHELM LOH GROUP



Base/plinth trim panels, side, 100 mm for base/plinth system VX, sheet steel – VX 8620.033

created: 09.08.2020 on www.rittal.com/com-en



Discontinued article.

This item will be discontinued on: 02.03.2020 |||This item is being replaced by: 8640033

Product description

Description: To finish off a base/plinth unit at the sides and for additional stabilisation or for the interior configuration of bayed base/plinths. One 200 mm high or two 100 mm high trim panels may optionally be fitted on 200 mm high base/plinths.

Material: Sheet steel

Colour: RAL 9005

Supply includes: Assembly parts

Product features

To fit: Depth: = 600 mm

Dimensions: Height: 100 mm

Packs of: 2 pc(s).

Weight/pack: 1.82 kg

Copper weight (kg per piece): 0

EAN: 4028177922204

Customs tariff number:	94039010
ETIM 7.0:	EC000721
ETIM 6.0:	EC000721
eCl@ss 8.0/8.1:	27182003
eCl@ss 6.0/6.1:	27189270
Product description:	VX Base/plinth trim panel, side, H: 100 mm, for D: 600 mm, sheet steel
Approvals	
Approvals:	UL + C-UL
Certificates:	EAC