

Rittal – The System.

Faster – better – everywhere.

za CM, TP – CM 5001.216

Date : 2020.09.29

ENCLOSURES

POWER DISTRIBUTION

CLIMATE CONTROL

IT INFRASTRUCTURE

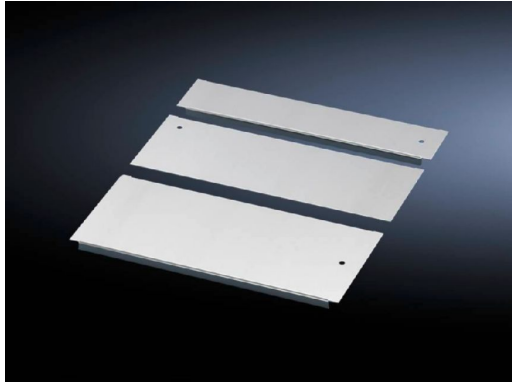
SOFTWARE & SERVICES

FRIEDHELM LOH GROUP



za CM, TP – CM 5001.216

created: 29.09.2020 build on www.rittal.com/hr-hr



Discontinued article.

: 31.01.2021

Product description

Description:	Potential equalisation is provided via assembly components and earthing points.
Material:	Čelični lim
Surface finish:	Zinc-plated
Supply includes:	Assembly parts
Note:	For greater stability and universal cable entry, the base opening is divided in the width for 1000, 1200 and 1600 mm wide enclosures, and is suitable for various configurations. Several gland module plates need to be combined to close off the base completely in the TS-IT

Product features

To fit:	Enclosure type: TS IT Enclosure type: TS Enclosure type: CM Enclosure type: TP Width: = 1000 mm
Dimensions:	Depth: 100 mm
Packs of:	1 pc(s).
Weight/pack:	0,78 kg

Copper weight (kg per piece):	0
EAN:	4028177523203
Customs tariff number:	73269098
ETIM 7.0:	EC002620
ETIM 6.0:	EC002620
eCl@ss 8.0/8.1:	27189261
eCl@ss 6.0/6.1:	27189261
Product description:	CM Gland plate, for CM, TP, D: 100 mm, for W: 1000 mm