

# Rittal – The System.

Faster – better – everywhere.

## Ploče modula za TE – TE 7526.795

Date : 2020.09.28

ENCLOSURES

POWER DISTRIBUTION

CLIMATE CONTROL

IT INFRASTRUCTURE

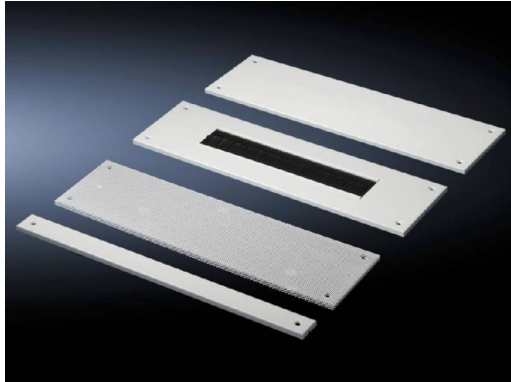
SOFTWARE & SERVICES

FRIEDHELM LOH GROUP



# Ploče modula za TE – TE 7526.795

created: 28.09.2020 build on [www.rittal.com/hr-hr](http://www.rittal.com/hr-hr)



## Product description

<b>Design:</b>	Compensating panel
<b>Description:</b>	The base area of the TE may be varied as required using the module plates.
<b>Applications:</b>	Please note when selecting suitable gland plates: Enclosure width minus 150 mm Enclosure depth minus 50 mm
<b>Material:</b>	Sheet steel, zinc-plated
<b>Supply includes:</b>	Assembly parts

## Product features

<b>To fit:</b>	Enclosure type: TE Width: 800 mm
<b>Dimensions:</b>	Width: 650 mm Depth: 150 mm
<b>Packs of:</b>	1 pc(s).
<b>Weight/pack:</b>	1,22 kg
<b>Copper weight (kg per piece):</b>	0
<b>EAN:</b>	4028177551190

<b>Customs tariff number:</b>	94039010
<b>ETIM 7.0:</b>	EC002620
<b>ETIM 6.0:</b>	EC002620
<b>eCl@ss 8.0/8.1:</b>	27189261
<b>eCl@ss 6.0/6.1:</b>	27189261
<b>Product description:</b>	TE Module plate, WxD: 650x150 mm, Compensating panel, For W: 800 mm