

Rittal – The System.

Faster – better – everywhere.

Ploče modula za TE – TE 7526.829

Date : 2020.09.28

ENCLOSURES

POWER DISTRIBUTION

CLIMATE CONTROL

IT INFRASTRUCTURE

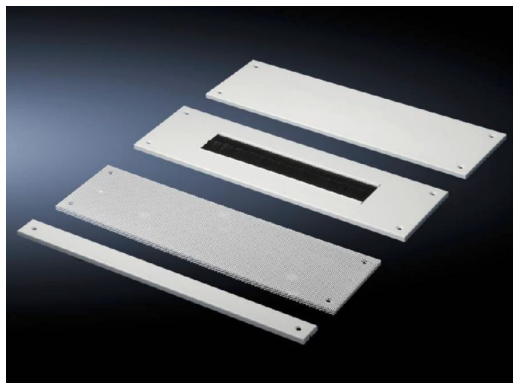
SOFTWARE & SERVICES

FRIEDHELM LOH GROUP



Ploče modula za TE – TE 7526.829

created: 28.09.2020 build on www.rittal.com/hr-hr



Product description

Design:	Vented
Description:	The base area of the TE may be varied as required using the module plates.
Applications:	Please note when selecting suitable gland plates: Enclosure width minus 150 mm Enclosure depth minus 50 mm
Material:	Sheet steel, zinc-plated
Supply includes:	Assembly parts

Product features

To fit:	Enclosure type: TE Width: 600 mm
Dimensions:	Width: 450 mm Depth: 200 mm
Packs of:	1 pc(s).
Weight/pack:	0,71 kg
Copper weight (kg per piece):	0
EAN:	4028177304017

Customs tariff number:	94039010
ETIM 7.0:	EC002620
ETIM 6.0:	EC002620
eCl@ss 8.0/8.1:	27189261
eCl@ss 6.0/6.1:	27189261
Product description:	TE Module plate, WxD: 450x200 mm, Vented, For W: 600 mm