

Rittal – The System.

Faster – better – everywhere.

– VX 8620.061

Date : 2020.10.01

ENCLOSURES

POWER DISTRIBUTION

CLIMATE CONTROL

IT INFRASTRUCTURE

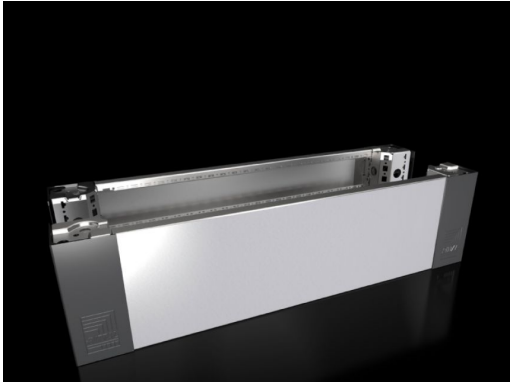
SOFTWARE & SERVICES

FRIEDHELM LOH GROUP



– VX 8620.061

created: 01.10.2020 build on www.rittal.com/hr-hr



Product description

Description: Base/plinth corner pieces with moulded self-positioning to the bayed enclosure system, for use with or without trim panels depending on the application. Large openings in the base/plinth corner piece for optimum access to the screw-fastening point may be concealed with a corner and baying cover.

Material: Base/plinth corner piece: Stainless steel 1.4301 (AISI 304)
Base/plinth trim panel front/rear: Stainless steel 1.4301 (AISI 304)
Corner and baying cover: Plastic

Surface finish: Trim panel: Brushed, grain size 400

Supply includes: 4 base/plinth corner pieces
4 corner covers
1 baying cover
1 base/plinth trim panel, front/rear, 200 mm high
2 base/plinth trim panels, front/rear, 100 mm high
Assembly parts

Note: Base/plinth trim panels, sides to finish off a unit, for additional stabilisation between base/plinths, or for interior configuration

Product features

To fit: Width: = 800 mm

Dimensions: Height: 200 mm

Packs of: 2 pc(s).

Weight/pack: 10,6 kg

Copper weight (kg per piece):	0
EAN:	4028177922341
Customs tariff number:	94039010
ETIM 7.0:	EC000721
ETIM 6.0:	EC000721
eCl@ss 8.0/8.1:	27182003
eCl@ss 6.0/6.1:	27182003
Product description:	VX Base/plinth corner piece, with base/plinth trim panel, front and rear, H: 200 mm, for W: 800 mm, stainless steel, 1.4301
Approvals	
Approvals:	UL + C-UL