

Rittal – The System.

Faster – better – everywhere.



► Open Hardware. Open Software. Open Future.

Rittal solutions – efficient, flexible and scalable.



ENCLOSURES

POWER DISTRIBUTION

CLIMATE CONTROL

IT INFRASTRUCTURE

SOFTWARE & SERVICES

FRIEDHELM LOH GROUP

Rittal – The System.

Faster – better – everywhere.

Open Compute Project (OCP)

Big data is a subject which is shaking up many areas of industry, commerce and trade. It is not only that data volumes are increasing exponentially. Perhaps even more important is that efficient and fast data processing will in future be more and more decisive for business success.

The OCP community came together to find solutions to this challenge. The prime objective of the Open Compute Project (OCP) is to reduce the investment and operating costs, energy consumption and environmental impact of data centres by way of innovative, fully standardised IT architectures. To this end, the OCP provides an open platform for the sharing of ideas and know-how, as a vehicle for the definition of ground-breaking standards for the data centre of the future.



"We are very proud to now be an official Gold member of the Open Compute Project. This now formalises Rittal's commitment to the Open Compute movement and allows us to offer our OCP products to the general market."

Jason Rylands,
Global Director of Data Center and Open Compute at Rittal

"We have been developing around Open Compute for a number of years and had great success. The Gold membership is an important step forward allowing us to solidify ourselves as a key member of the community."

Andrew Gill, Vice President Engineering at Rittal CSM UK



IT infrastructure – Architectures for the future

As a leading manufacturer of IT architectures, Rittal is proud to be a member of the OCP community. Expertise in the standardisation of data centre architectures, in particular, has established Rittal's reputation as a strong partner when it comes to demanding OCP-related tasks.

Rittal offers both preconfigured modules and ready-to-use standardised data centres, not only as "off-the-shelf" products, but also as individually tailored systems for smaller companies and flexibly scalable container solutions.

ENCLOSURES

POWER DISTRIBUTION

CLIMATE CONTROL

Proven rack design for Open Compute

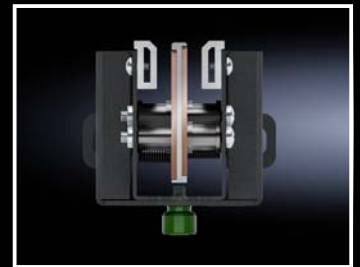
- Meets v1.2 and 2.0 Open Rack standard
- UL/CE listed
- 12 V DC/48 V DC
- 13.2 kW – 40 kW
- 21" to 19" bridging adaptors
- Shelves configurable in 1 OU increments
- Common frame, modular busbars



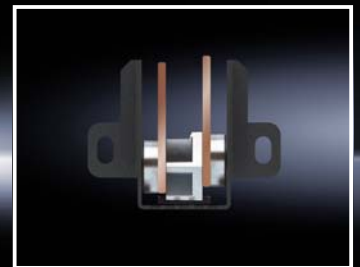
Modular busbar system
12 V DC to 48 V DC utilising
identical Open Rack



48 V DC / 36 kW



48 V DC / 15 kW



12 V DC / 6.6 – 13.2 kW

IT INFRASTRUCTURE

SOFTWARE & SERVICES



Rittal – The System.

Faster – better – everywhere.

- Enclosures
- Power Distribution
- Climate Control
- IT Infrastructure
- Software & Services

Sweden
RITTAL Scandinavian ab
Rittalgatan 1 · SE-262 73 Ängelholm
Phone: +46 (0)431 44 26 00 · Fax: +46 (0)431 44 26 44
E-mail: info@rittal.se · www.rittal.se

Norway
RITTAL AS
Postboks 258 · N-1401 Ski
Besøksadresse: Vestveien 18 · N-1400 Ski
Phone: +47 64 85 13 00 · Fax: +47 64 85 13 01
E-mail: rittal@rittal.no · www.rittal.no

Denmark
RITTAL A/S
Dybendalsvænget 4 · DK-2630 Taastrup
Phone: +45 70 25 59 00 · Fax: +45 70 25 59 01
E-mail: info@rittal.dk · www.rittal.dk



XWWW00129EN1703

ENCLOSURES

POWER DISTRIBUTION

CLIMATE CONTROL

IT INFRASTRUCTURE

SOFTWARE & SERVICES



FRIEDHELM LOH GROUP