

Rittal – The System.

Faster – better – worldwide.



TS FMDC

- 9951130 9951144
- 9951131 9951145
- 9951134 9951146
- 9951135 9951147
- 9951136 9951148
- 9951137 9951150
- 9951138 9951151
- 9951140 9951153
- 9951142 9951154
- 9951143

Assembly and operating instructions

Table of contents

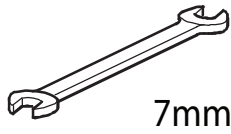
Page

Required Tools	2
Loose Components supplied with enclosure / Hardware	2
Enclosure Component Overview	3
Installation of the disconnect handle to the enclosure.	4
Installation of defeater lever to the disconnect handle.	4
Disconnect handle configuration chart	5
Installing the connecting rod and upper collet	6
Installing the lower collet	7
Installing the door catch	8
Testing and troubleshooting	9



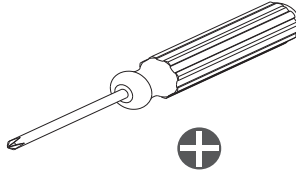
Loose Component supplied with enclosure /Hardware

Required Tools (not provided)

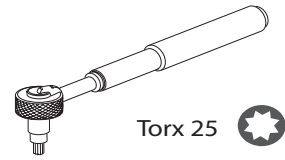


7mm

WRENCH 7MM



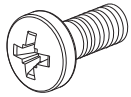
PHILLIPS SCREWDRIVER



Torx 25 

TORX DRIVER

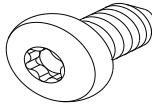
Hardware (provided)



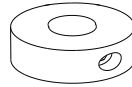
M4 x 12 Bolt



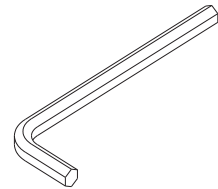
M4 Lock Nut



Screw 5.5 x 13 Pan Torx

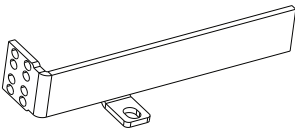


M5 Collet

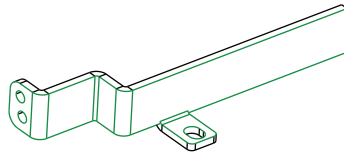


1.5mm ALLEN WRENCH

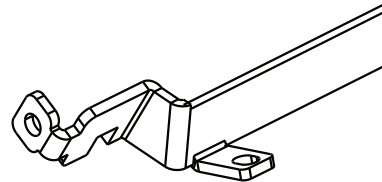
Loose Components (provided)



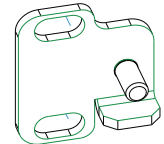
Universal defater Lever



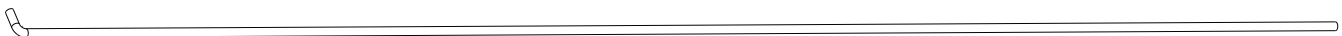
Eaton Flex Shaft defater Lever



LSIS defater Lever



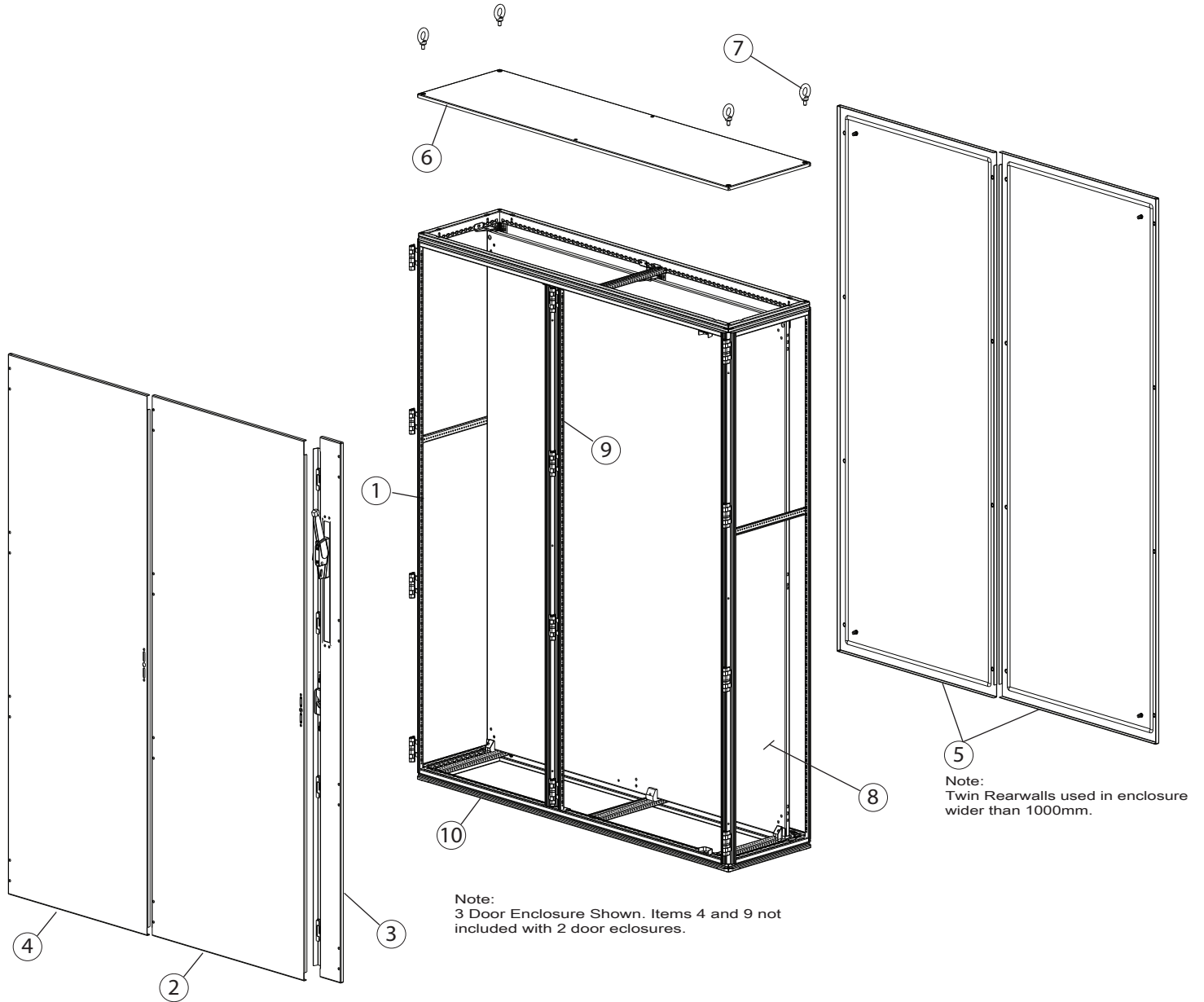
Adapter Bracket Siemens



Connecting Rod

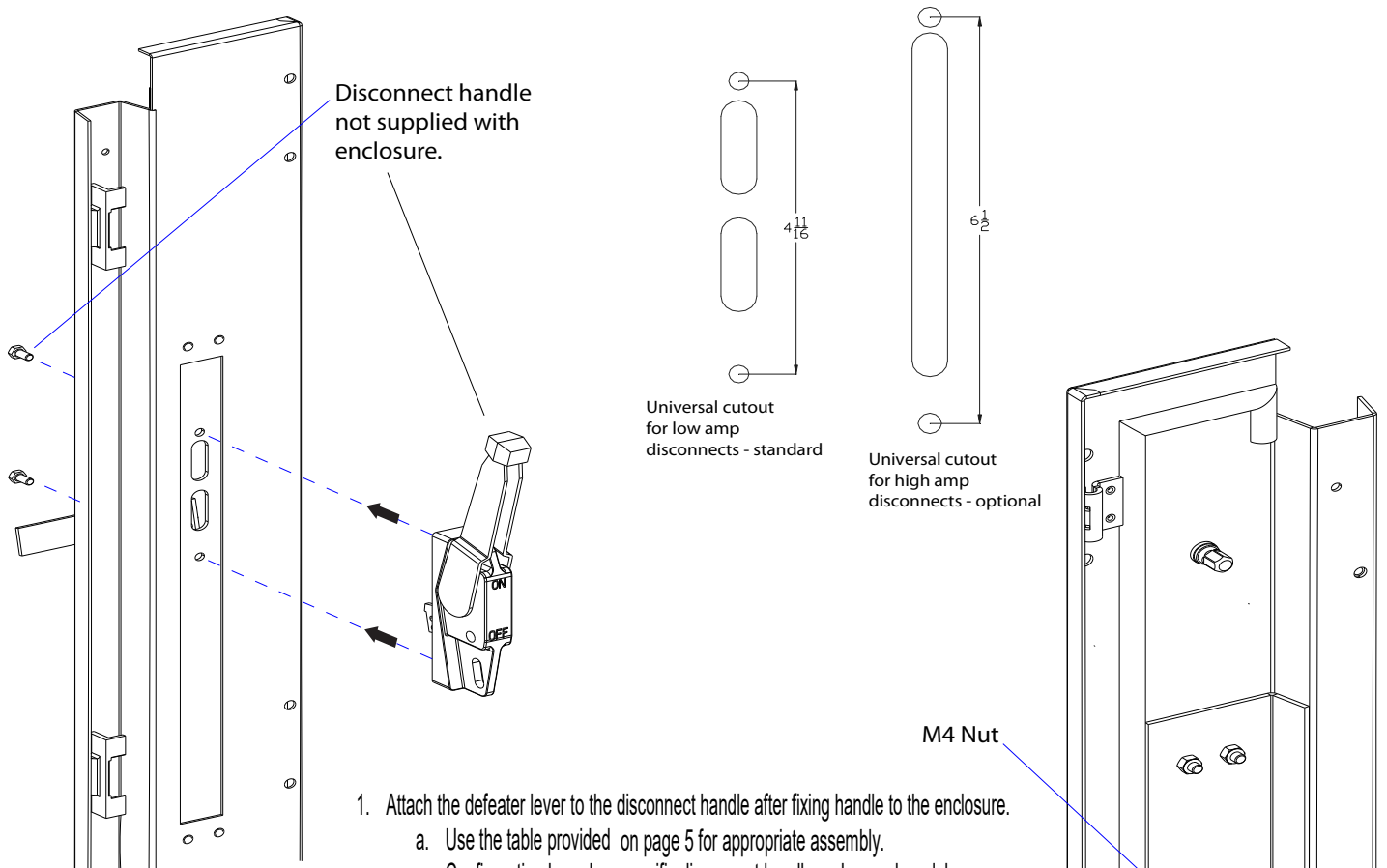
Enclosure Component Overview

TS FMDC ENCLOSURE / 2 Door / 3 Door



- | | |
|------------------|-------------------------------|
| ① TS Frame | ⑥ Roof |
| ② Master Door | ⑦ Eye bolt |
| ③ FMDC Door | ⑧ Mounting Panel |
| ④ Slave Door | ⑨ Front Mullion |
| ⑤ Twin Rearwalls | ⑩ Baseframe With Cable Plates |

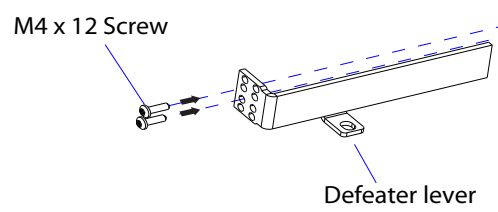
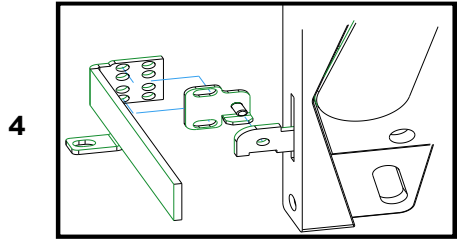
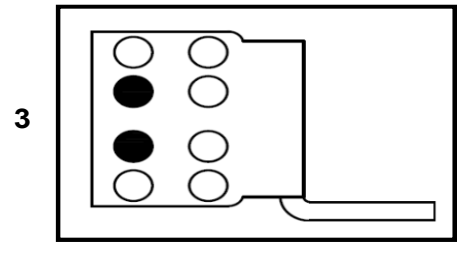
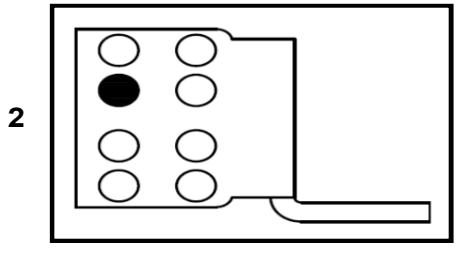
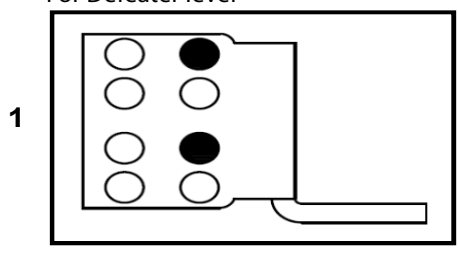
Installation of disconnect handle / defeater lever



1. Attach the defeater lever to the disconnect handle after fixing handle to the enclosure.
 - a. Use the table provided on page 5 for appropriate assembly. Configuration based on specific disconnect handle makes and models
 - b. If the handle has threaded holes, use manufacturer hardware.
 - c. If the handle has thru-holes, use Rittal M4x12 screw and nuts (7mm wrench).

Configuration Options

For Defeater lever



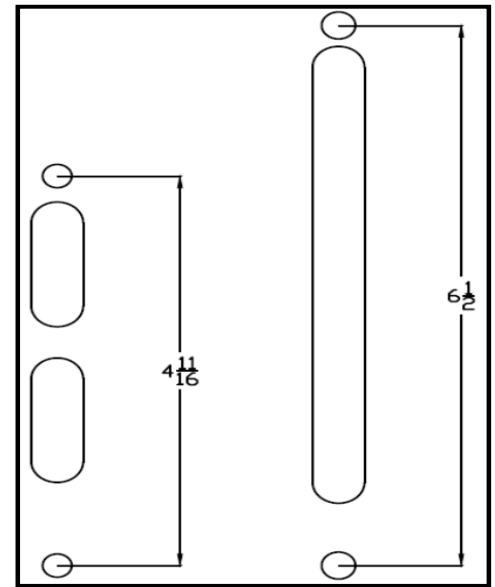
See: TABLE ON PAGE 5



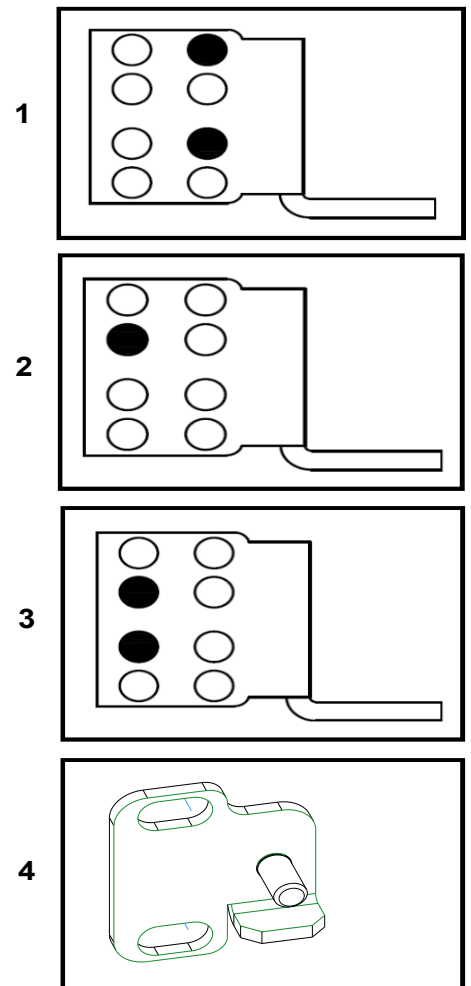
Disconnect handle configuration chart

4-11/16" Cutout

	Handle/Operator	Configuration
Rockwell / Allen Bradley	140G M1/S1/P1/P2	1*
	1494C (≤ 200A)	1*
	1494F M1/S1/P1	1*
	1494V (≤ 200A)	1*
	194R	1*
ABB	DSFHN-HS	3*
	OHF1C	2
Eaton	C361	3*
	C371	3*
	Flex Shaft CH	Special defeater lever
GE	SCH1 / SCH2	3
	SCOM	3
	SDOM	3
	STDA	3
	TDOM	3
Siemens	FDH10 / FDH20	2
	FHOH	2
	MFHM3RS / MFHM4X	4
Square D	9422 Type A1/A3/A9	3
	9422 Type A2/A4/A10	3



Configuration Options



Note, for configuration #2 an extra bolt/nut should be used beneath the single hole to prevent accidental rotation.

6-1/2" Cutout

	Handle/Operator	Configuration
Rockwell / Allen Bradley	1494C (400 - 600A)	1
	1494F M2/S2	1
	1494V (400 - 600A)	1
ABB	K7FCH	2
Siemens	FHOHN	2
	MFHP3R / MFHP4X	4
	VBH2	2

* Use hardware supplied by disconnect handle manufacturer.

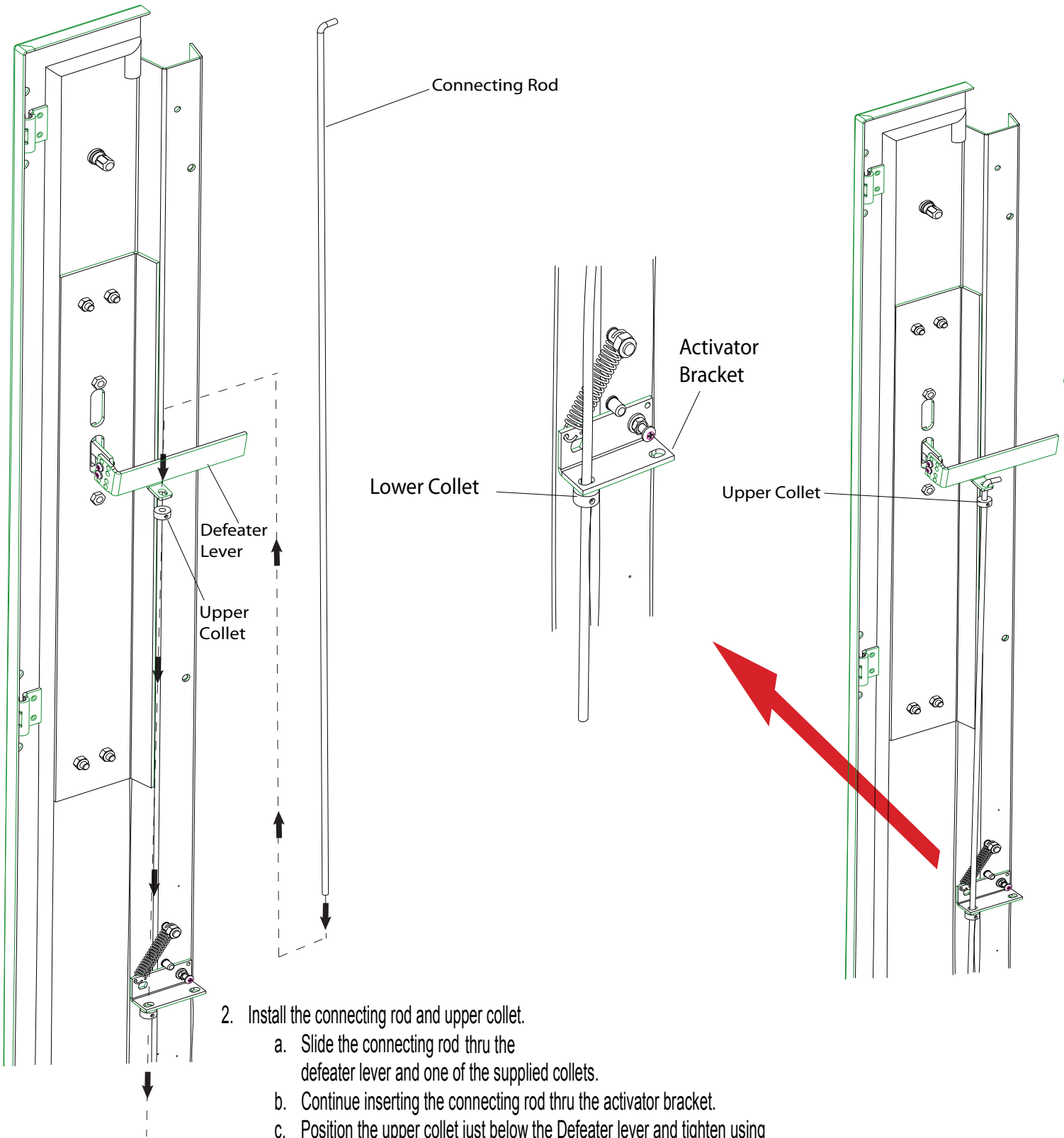
NOTE:
DOOR COMPONENTS SHOWN ON PAGE 4.

Rittal Corporation 1 Rittal Place Urbana, OH 43078

Telephone: +1 937-399-0500 Fax: +1 937-390-5599 eMail: rittal@rittal.us Website: www.rittal.us



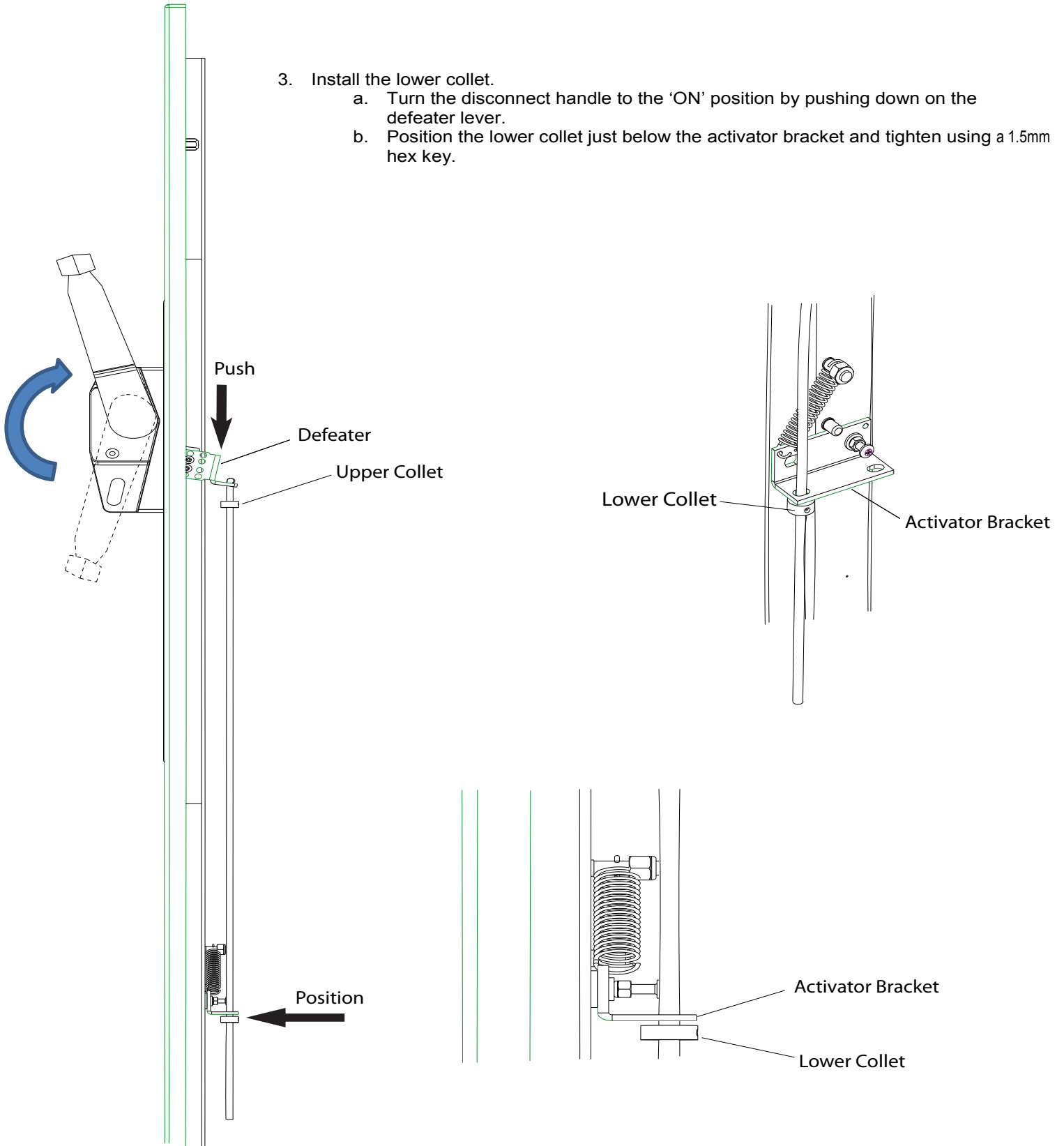
Installing the connecting rod and upper collet



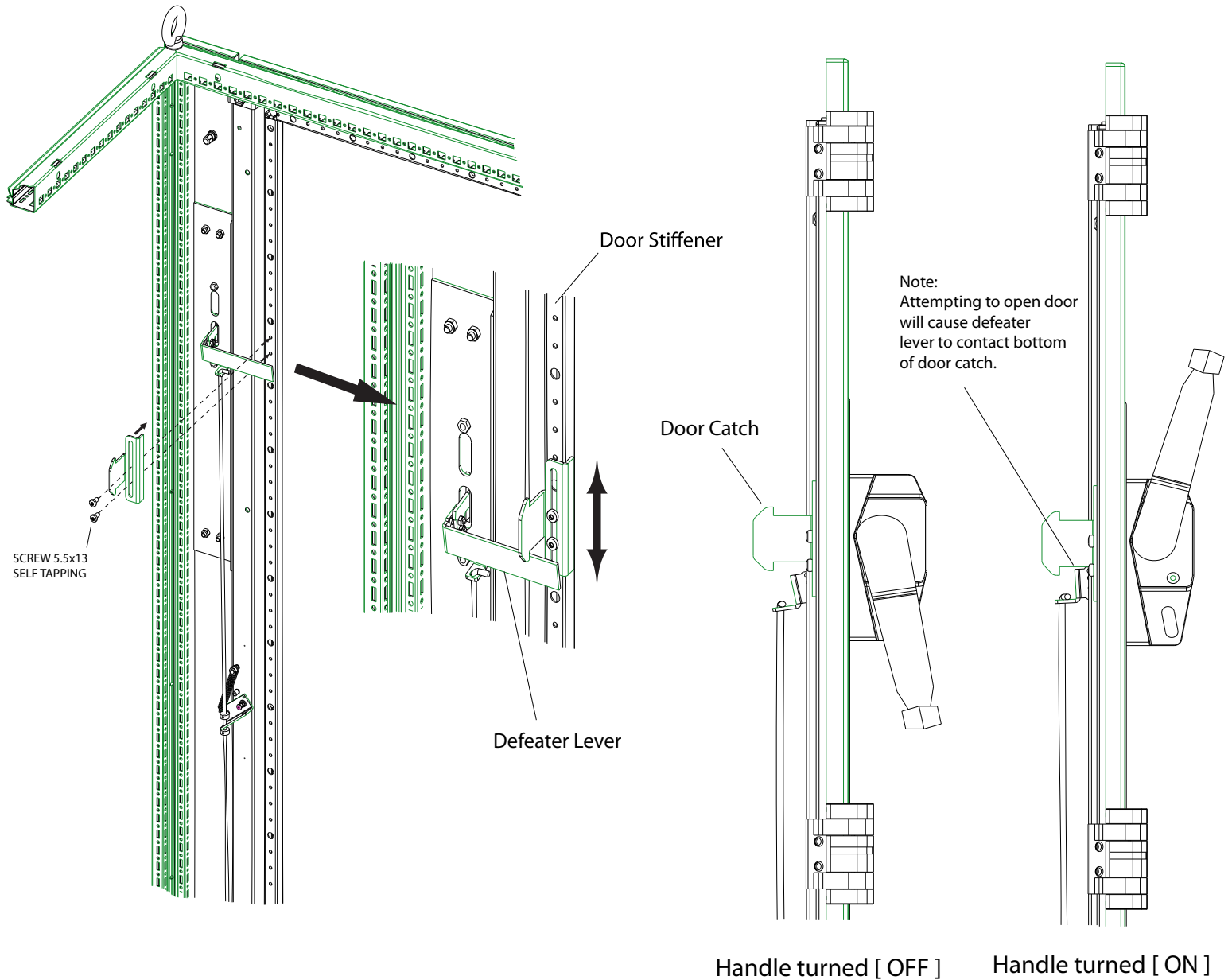
2. Install the connecting rod and upper collet.
 - a. Slide the connecting rod thru the defeater lever and one of the supplied collets.
 - b. Continue inserting the connecting rod thru the activator bracket.
 - c. Position the upper collet just below the Defeater lever and tighten using a 1.5mm hex key.

Installing the lower collet

3. Install the lower collet.
 - a. Turn the disconnect handle to the 'ON' position by pushing down on the defeater lever.
 - b. Position the lower collet just below the activator bracket and tighten using a 1.5mm hex key.



Adjusting the door catch

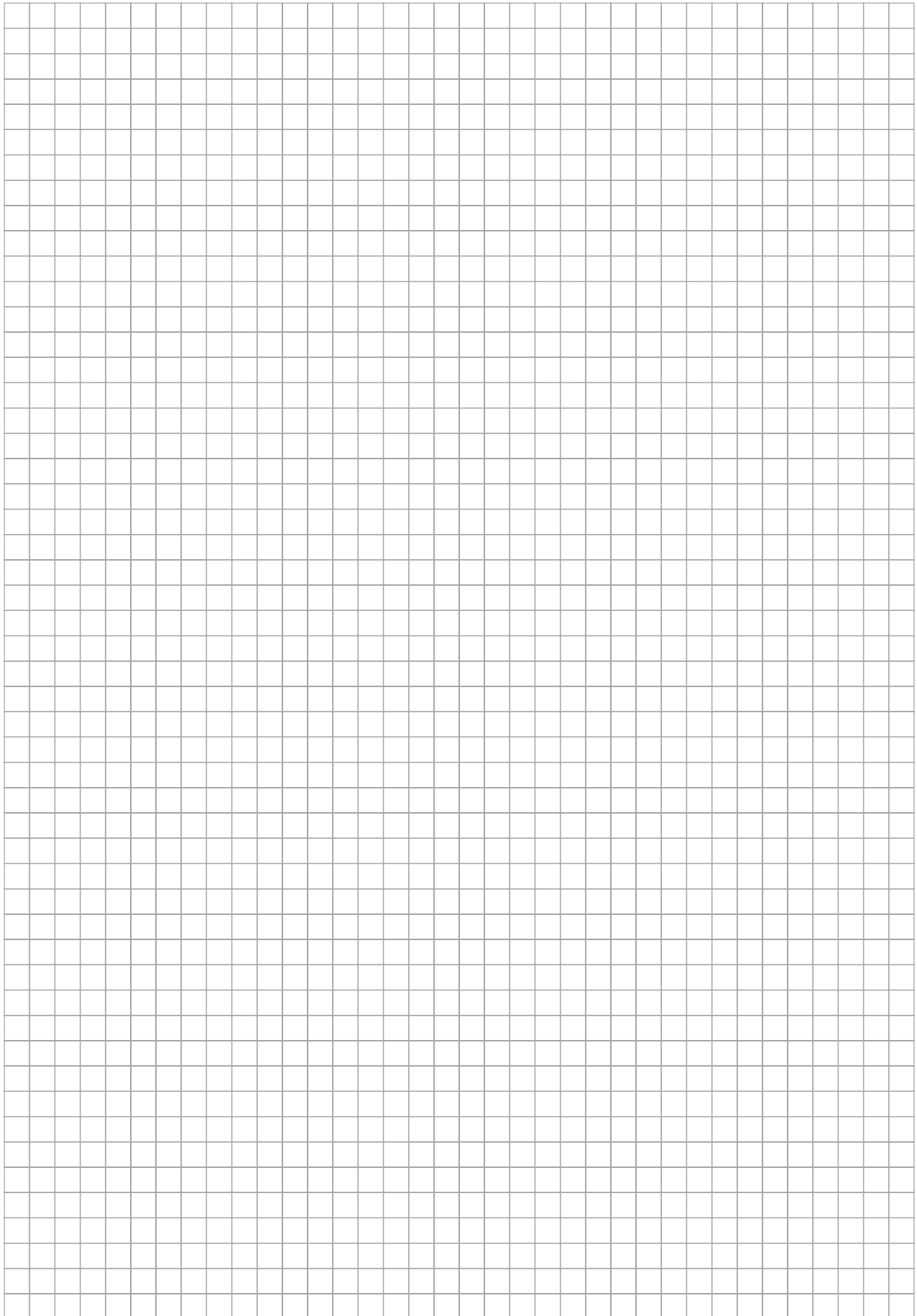


4. Adjust the door catch.
 - a. The FMDC door should be closed and fully latched.
 - b. Assuming that there is access from the side of the enclosure for installation, the master door should be closed but NOT latched.
 - c. With the disconnect handle turned 'ON', position and tighten the door catch on the master door stiffener above the defeater lever such that it is effectively locking the main door and preventing it from opening.
 - d. Turning the handle 'OFF' should lower the defeater lever and allow the door to open.

Testing and troubleshooting:

1. Test the handle-lockrod engagement (Door open).
 - a. The FMDC Door should be closed and fully latched.
 - b. The disconnect handle should be 'OFF'.
 - c. The Master Door should be open.
 - d. Attempt to turn the disconnect handle to the 'ON' position.
 - i. It should not allow this to happen.
 - e. If the handle is capable of turning on, the lower collet is positioned too high.
 - i. Position the lower collet slightly lower on the connecting rod and retest.
2. Test the handle-lockrod engagement (Door closed).
 - a. The FMDC Door should be closed and fully latched.
 - b. The disconnect handle should be 'OFF'.
 - c. The Master Door should be closed and fully latched.
 - d. Attempt to turn the disconnect handle to the 'ON' position.
 - i. It should allow this to happen.
 - e. If the handle is incapable of turning on, the lower collet is positioned too low.
 - i. Position the lower collet slightly higher on the connecting rod and retest.
After retest please go back to step 1.
3. Test the door lockout engagement. (After passing tests #1 and #2)
 - a. The FMDC Door should be closed and fully latched.
 - b. The disconnect handle should be 'OFF'.
 - c. The Master Door should be closed and fully latched.
 - d. Turn the disconnect handle to the 'ON' position.
 - e. Attempt to open the Master Door.
 - i. The defeater lever should engage the main door catch and lock the door.
 - f. If the main door opens the main door catch is positioned too high.
 - i. Position the main door catch lower on the main door stiffener and retest.

Notes



Rittal – The System.

Faster – better – worldwide.

- Enclosures
- Power Distribution
- Climate Control
- IT Infrastructure
- Software & Services

The Rittal Corporation is the U.S. subsidiary of Rittal GmbH & Co. KG and manufactures the world's leading industrial and IT enclosures, racks and accessories, including climate control and power management systems for industrial, data center, outdoor and hybrid applications. For more information about Rittal and its products, please visit www.rittal-corp.com or call 1-800-477-4000.

Rittal Corporation
1 Rittal Place • Urbana Ohio 43078 • USA
Phone: 937-399-0500 • Fax: 800-477-4003 • Toll-free: 800-477-4000
Email: rittal@rittal.us • Online: www.rittal.us

Rittal Systems Ltd.
6485 Ordan Drive • Mississauga Ontario L5T 1X2 • Canada
Phone: 905-795-0777 • Fax: 905-795-9548 • Toll-free: 800-399-0748
Email: marketing@rittal.ca • Online: www.rittal.ca

6/14 • US206

