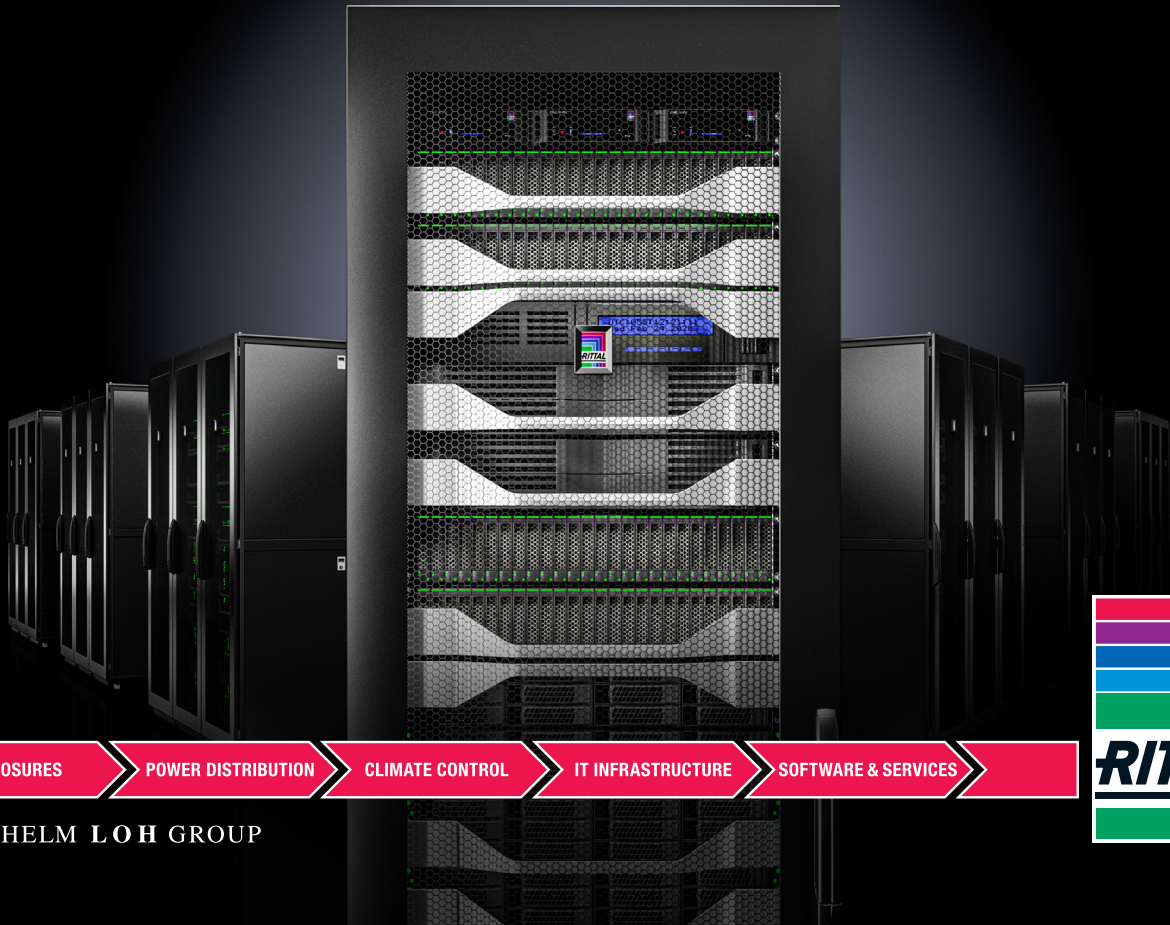


**Rittal – The System.**

Faster – better – everywhere.

# TS IT Pro Data Center Enclosure System

Made in America - Ready to Ship



ENCLOSURES

POWER DISTRIBUTION

CLIMATE CONTROL

IT INFRASTRUCTURE

SOFTWARE & SERVICES



FRIEDHELM LOH GROUP



# Made in America - Ready to Ship

---

## Trusted Hyperscaler Design

Inspired by a trusted design used by the world's leading hyperscalers, the Rittal TS IT Pro is an ideal solution for data centers that combines quality with cost-effectiveness. Designed to meet the evolving needs of data centers today, this IT enclosure features a strong combination of dependable engineering and USA manufacturing.

## Modular & Durable

The TS IT Pro also offers robustness to withstand frequent upgrades and asset swaps to ensure optimal reliability and efficiency. In short, the TS IT Pro provides data centers with a faster, easier, and more economical enclosure solution, all backed by a credible history of performance in the industry.



# Your Single Source for Comprehensive IT Infrastructure Solutions

---

From enclosures to power, cooling, and security, customers can become overwhelmed with vendors, manufacturers, and technologies. By offering complete, pre-engineered, and modular systems and solutions, Rittal effectively eliminates the burden of matching individual IT infrastructure components that may not be optimally utilized together. Rittal IT infrastructure solutions provide comprehensive platforms for IT assets that are not only simple to order, fast to ship, and easy to deploy, but also easy to scale and grow with. Combine this with the excellent quality Rittal is known for and you have a winning solution that can open doors on a global scale.



## Enclosures

Rittal is the largest manufacturer of enclosure solutions in the world. Our expertise is rooted in decades of engineering and manufacturing experience that translates to quality enclosures with ergonomic designs that meet our customers' requirements.



## Climate Control

Rittal provides the most energy efficient climate control solutions on the market. Liquid Cooling Packages (LCPs) deliver inline, closed-loop cooling for rows of enclosures, while highly efficient open-loop climate control solutions for room cooling are also available. For edge solutions, Rittal Blue e+ rack cooling units provide up to 75% energy efficiency gains.



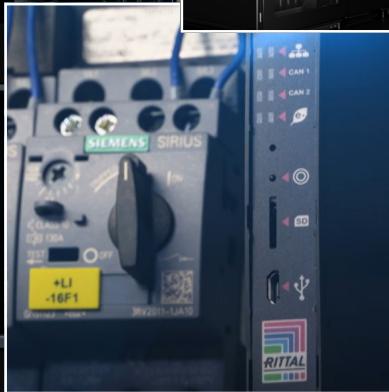
## Power

Offering both efficiency and control, Rittal's selection of robust power distribution units (PDUs) are ideal for businesses that rely on optimal performance from their critical IT equipment. PDUs are available in a wide range of capacities to support any installation density.



## Monitoring

The Rittal Computer Multi Control (CMC) III Monitoring System permits robust monitoring and controlling of your IT infrastructure systems with easy-to-track data and reporting. Now, IT personnel can remotely monitor temperature, humidity, pressure, smoke, leaks, and physical breaches.



## Security

While the versatile CMC III remote monitoring system provides convenient security monitoring, IT equipment can also be secured from entry with combination lock handles. With both electronic access control and remote monitoring of enclosure access, IT assets can be thoroughly protected from tampering.



# Benefits for Data Center Deployment

---

## Hyperscaler-Inspired Design

Leverages decades of hyperscaler collaboration to bring robust, high-density application support to the market.

## Made in America

Fully manufactured in the USA, ensuring no supply chain disruptions.

## Enhanced Security

Features a superior, four-latch door locking mechanism and lockable half-height side panels or market leading physical security.

## Unmatched Quality

Integrates fifty years of pioneering experience and rigorous quality checks with solutions trusted by OEMs, colocations, and the government.

## Modular and Scalable Design

Designed for flexibility with quick-release doors, adjustable rails, and removable panels for easy upgrades and scaling.

## Fully Ship-Loadable

Quick to deploy, the TS IT Pro can be preloaded as a fully ship-loadable solution with thousands of pounds of equipment and an ISTA 3E rating.

# A Rapidly Changing Industry Requires a Rapid Solution

Data centers and other businesses in the IT space face numerous challenges due to the rapidly evolving nature of the industry, such as the need for quick deployment of infrastructure, maintaining consistency across multiple sites, managing diverse equipment requirements, and ensuring long-term reliability. The demand for infrastructure solutions that are efficient, secure, and scalable is more critical than ever as organizations strive to streamline operations, accommodate varying equipment needs, and safeguard their assets against potential risks.

## Easy Ordering & Quick Deployment

Get your TS IT Pro customized and ready to ship with all necessary accessories pre-installed for streamlined deployment. The TS IT Pro guarantees standardization and consistency across various locations by a partner that can ensure a continuity of supply.

## Flexible Installation

Maximize workspace and easily accommodate different equipment depths as required with the modular design. The TS IT Pro is also designed to seamlessly integrate or retrofit with supplemental row and rack level cooling solutions without complication. A wide range of security, access control, and cable and air flow management accessories are available to create a comprehensive infrastructure solution.

## Dependable Durability

Built to withstand frequent asset swaps and refreshes, the fully welded frame of the TS IT Pro ensures long-term reliability. The strength and rigidity of the TS IT Pro allows for a dynamic load capability of 2,250 lbs, enabling fully integrated systems to ship ready for deployment.

Inquire about the TS IT Pro today:



[www.rittal.com/contact](http://www.rittal.com/contact)





# TS IT Pro



TS IT Pro configured for ready deployment. Enclosures are complete with depth adjustable 19" EIA rails, casters, right and left cable management walls each with dual PDU mounting, baying kit and locking front and rear perforated doors. Available in a range of sizes with sidewalls.

### Includes

- Perforated single steel door at the front (85% perforated) 145° quick release security hinges
- Perforated steel door at the rear vertically divided (85% perforated) 145° quick release security hinges
- Roof cable access with brushed baffles
- Front and rear Comfort Handles with push button keyed door lock
- Casters
- Leveling feet

- Fully welded steel frame
- 19" EIA rails printed with U markings on the front and back of each rail
- Baying Brackets included
- M6 cage nuts (Package of 50)
- M6 mounting screws (Package of 50)
- Two movable cable management walls with dual PDU mounting and cable manager cutouts
- Half-height quick release locking sidewalls keyed to match door locks

### Material

- Carbon steel

### Color

- Black RAL 9005

### Certifications

- UL 60950-1
- EIA 310E
- UL 2416
- cUL

### Warranty

- 5 years

## with Sidewalls

Part Number	9982.200	9982.202	9982.206	9982.204	9982.208
RU Height	24 U	42 U	42 U	42 U	42 U
Height with casters	49" (1254 mm)	79" (2012 mm)	79" (2012 mm)	79" (2012 mm)	79" (2012 mm)
Width	24" (600 mm)	24" (600 mm)	24" (600 mm)	30" (750 mm)	30" (750 mm)
Depth	42" (1070 mm)	42" (1070 mm)	48" (1200 mm)	42" (1070 mm)	48" (1200 mm)
Door Type	Perforated front and rear	Perforated front and rear	Perforated front and rear	Perforated front and rear	Perforated front and rear
Weight Capacity (Static)	3000 lb.	3750 lb.	3750 lb.	3750 lb.	3750 lb.
Weight Capacity (Dynamic)	-	2250 lb.	2250 lb.	2250 lb.	2250 lb.
Net Weight of each rack	173 lb.	258 lb.	288 lb.	313 lb.	343 lb.
Baying Configurations	600 mm and 24"	600 mm and 24"	600 mm and 24"	750 mm	750 mm

## with Sidewalls

Part Number	9982.210	9982.214	9982.212	9982.216	9982.218	9982.219	9982.220	9982.221
RU Height	48 U	48 U	48 U	48 U	53 U	53 U	53 U	53 U
Height with casters	90" (2279 mm)	90" (2279 mm)	90" (2279 mm)	90" (2279 mm)	99" (2504 mm)	99" (2504 mm)	99" (2504 mm)	99" (2504 mm)
Width	24" (600 mm)	24" (600 mm)	30" (750 mm)	30" (750 mm)	24" (600 mm)	30" (750 mm)	24" (600 mm)	30" (750 mm)
Depth	42" (1070 mm)	48" (1200 mm)	42" (1070 mm)	48" (1200 mm)	42" (1070 mm)	42" (1070 mm)	48" (1200 mm)	48" (1200 mm)
Door Type	Perforated front and rear	Perforated front and rear	Perforated front and rear	Perforated front and rear	Perforated front and rear	Perforated front and rear	Perforated front and rear	Perforated front and rear
Weight Capacity (Static)	3750 lb.	3750 lb.	3750 lb.	3750 lb.	3750 lb.	3750 lb.	3750 lb.	3750 lb.
Weight Capacity (Dynamic)	2250 lb.	2250 lb.	2250 lb.	2250 lb.	2250 lb.	2250 lb.	2250 lb.	2250 lb.
Net Weight of each rack	294 lb.	324 lb.	360 lb.	390 lb.	318 lb.	395 lb.	428 lb.	506 lb.
Baying Configurations	600 mm and 24"	600 mm and 24"	750 mm	750 mm	600 mm and 24"	750 mm	600 mm and 24"	750 mm



TS IT Pro configured for ready deployment. Enclosures are complete with depth adjustable 19" EIA rails, casters, cable management walls with dual PDU mounting, baying kit and locking front and rear perforated doors. Available in a range of sizes without sidewalls.

### Includes

- Perforated single steel door at the front (85% perforated) 145° quick release security hinges
- Perforated steel door at the rear vertically divided (85% perforated) 145° quick release security hinges
- Roof cable access with brushed baffles
- Front and rear Comfort Handles with push button keyed door lock
- Casters
- Leveling feet
- Fully welded steel frame
- 19" EIA rails printed with U markings on the front and back of each rail
- Baying Brackets included
- M6 cage nuts (Package of 50)
- M6 mounting screws (Package of 50)
- Two movable cable management walls with dual PDU mounting and cable manager cutouts

### Material

- Carbon steel

### Color

- Black RAL 9005

### Certifications

- UL 60950-1
- EIA 310E
- UL 2416
- cUL

### Warranty

- 5 years

## without Sidewalls

Part Number	9982.201	9982.203	9982.207	9982.205	9982.209	9982.211
RU Height	24 U	42 U	42 U	42 U	42 U	48 U
Height with casters	49" (1254 mm)	79" (2012 mm)	79" (2012 mm)	79" (2012 mm)	79" (2012 mm)	90" (2279 mm)
Width	24" (600 mm)	24" (600 mm)	24" (600 mm)	30" (750 mm)	30" (750 mm)	24" (600 mm)
Depth	42" (1070 mm)	42" (1070 mm)	48" (1200 mm)	42" (1070 mm)	48" (1200 mm)	42" (1070 mm)
Door Type	Perforated front and rear	Perforated front and rear	Perforated front and rear	Perforated front and rear	Perforated front and rear	Perforated front and rear
Weight Capacity (Static)	3000 lb.	3750 lb.	3750 lb.	3750 lb.	3750 lb.	3750 lb.
Weight Capacity (Dynamic)	-	2250 lb.	2250 lb.	2250 lb.	2250 lb.	2250 lb.
Net Weight of each rack	173 lb.	205 lb.	226 lb.	260 lb.	281 lb.	233 lb.
Baying Configurations	600 mm and 24"	600 mm and 24"	600 mm and 24"	750 mm	750 mm	600 mm and 24"

## without Sidewalls

Part Number	9982.211	9982.215	9982.213	9982.217
RU Height	48 U	48 U	48 U	48 U
Height with casters	90" (2279 mm)	90" (2279 mm)	90" (2279 mm)	90" (2279 mm)
Width	24" (600 mm)	24" (600 mm)	30" (750 mm)	30" (750 mm)
Depth	42" (1070 mm)	48" (1200mm)	42" (1070 mm)	48" (1200 mm)
Door Type	Perforated front and rear	Perforated front and rear	Perforated front and rear	Perforated front and rear
Weight Capacity (Static)	3750 lb.	3750 lb.	3750 lb.	3750 lb.
Weight Capacity (Dynamic)	2250 lb.	2250 lb.	2250 lb.	2250 lb.
Net Weight of each rack	233 lb.	262 lb.	299 lb.	328 lb.
Baying Configurations	600 mm and 24"	600 mm and 24"	750 mm	750 mm

# TS IT Pro



TS IT Pro configured for ready deployment. Enclosures are complete with depth adjustable 19" EIA rails, casters, right and left cable management walls each with dual PDU mounting, baying kit and locking front and rear perforated doors. Robust packaging system designed for safe equipment integration, transportation, and on site deployment. Meets ISTA 3E standards. Available in a range of sizes with sidewalls.

### Includes

- Perforated single steel door at the front (85% perforated) 145° quick release security hinges
- Perforated steel door at the rear vertically divided (85% perforated) 145° quick release security hinges
- Roof cable access with brushed baffles
- Front and rear Comfort Handles with push button keyed door lock
- Casters
- Leveling feet
- Fully welded steel frame
- 19" EIA rails printed with U markings on the front and back of each rail
- Baying Brackets included
- M6 cage nuts (Package of 50)
- M6 mounting screws (Package of 50)
- Two movable cable management walls with dual PDU mounting and cable manager cutouts
- Half-height quick release locking sidewalls keyed to match door locks
- Engineered shock pallet for safe transportation of IT equipment
- Three piece rugged shell
- Included ramp for unloading on site

### Material

- Carbon Steel

### Color

- Black RAL 9005

### Certifications

- UL 60950-1
- EIA 310E
- UL 2416
- cUL
- ISTA 3E

### Warranty

- 5 years

## with Sidewalls

Part Number	9982.226	9982.227	9982.228	9982.229	9982.230	9982.231	9982.232	9982.233
RU Height	42 U	42 U	42 U	42 U	48 U	48 U	48 U	48 U
Height with casters	79" (2012 mm)	79" (2012 mm)	79" (2012 mm)	79" (2012 mm)	90" (2279 mm)	90" (2279 mm)	90" (2279 mm)	90" (2279 mm)
Width	24" (600 mm)	30" (750 mm)	24" (600 mm)	30" (750 mm)	24" (600 mm)	30" (750 mm)	24" (600 mm)	30" (750 mm)
Depth	42" (1070 mm)	42" (1070 mm)	48" (1200 mm)	48" (1200 mm)	42" (1070 mm)	42" (1070 mm)	48" (1200 mm)	48" (1200 mm)
Door Type	Perforated front and rear	Perforated front and rear	Perforated front and rear	Perforated front and rear	Perforated front and rear	Perforated front and rear	Perforated front and rear	Perforated front and rear
Weight Capacity (Static)	3750 lb.	3750 lb.	3750 lb.	3750 lb.	3750 lb.	3750 lb.	3750 lb.	3750 lb.
Weight Capacity (Dynamic)	2250 lb.	2250 lb.	2250 lb.	2250 lb.	2250 lb.	2250 lb.	2250 lb.	2250 lb.
Net Weight of each rack	258 lb.	313 lb.	288 lb.	343 lb.	294 lb.	361 lb.	324 lb.	390 lb.

# TS IT Pro Cable Management Accessories

## Vertical Cable Duct

### for TS IT Pro

Vertical Cable Duct installs to the EIA rails for flexible and easy cable management. Cable fingers provide for proper bend radius of cables.

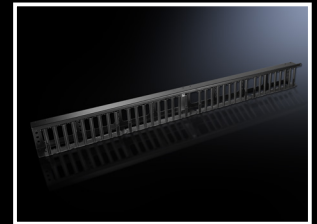
#### Material:

- Aluminum
- Plastic to UL 94-V0

#### Color:

- Black

For enclosure height	For enclosure width mm	Kit	Model No.
42 U	750 mm	1	<b>9982.239</b>
48 U	750 mm	1	<b>9982.240</b>
53 U	750 mm	1	<b>9982.241</b>



## Quarter-turn Cable Managers

### for TS IT Pro

Provides flexible and simple installation within the enclosure. Installation on side of EIA rails, enclosure frame, and PDU Cable Management wall.

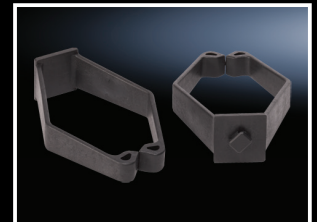
#### Material:

- Plastic Hook and loop
- Plastic to UL 94-V0

#### Color:

- Black

Version	Length	Width	Depth	Kit	Model No.
Fastener strap	17"	-	-	10	<b>9969.599</b>
Collection claw	-	3"	4.45"	10	<b>9969.600</b>



## Quarter-turn Cable Management D-ring

### for TS IT Pro

Provides flexible and simple installation within the enclosure. Installation on side of EIA rails, enclosure frame, and PDU Cable Management wall.

#### Material:

- Plastic to UL 94-V0

#### Color:

- Black

Size	Kit	Model No.
4.25" x 2"	10	<b>9961.779</b>
5" x 3.5"	10	<b>9961.780</b>



# TS IT Pro Cable Management Accessories



## Horizontal Cable Management with hingeable/removable cover

1 U Horizontal, Rack Mount Cable Management with hingeable/removable cover. Side to side installation on the 19" rack mount. Pack of 2.

### Installation options:

- Horizontal
- Side to side installation on EIA rails

### Material:

- Aluminum
- Plastic to UL 94-V0

### Color:

- Black

Height	Kit	Model No.
1 U	2	<b>9969.736</b>
2 U	2	<b>9969.597</b>



## Cable management fingers for TS IT Pro

Efficient cable management in the front and rear of the enclosure. Each kit is designed for one rail. Cable fingers are evenly spaced with rack units and provide proper bend radius for cables.

### Installation options:

- Installs on vertical 19" EIA rails

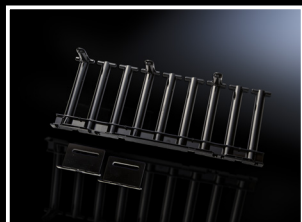
### Material:

- Carbon steel
- Plastic to UL 94-V0

### Color:

- Black

For enclosure height	Kit	Model No.
42 U	1	<b>9982.272</b>
48 U	1	<b>9982.273</b>
53 U	1	<b>9982.274</b>



## Cable duct for TS IT Pro

For organizing front to rear cabling. Mounts to the EIA rail and is adjustable for different EIA rail dimensions. Bend radius protection at each end.

### Installation options:

- Installs on front and rear rail within a maximum distance of 799 mm/31.5 in and a minimum of 599 mm/23.6 in

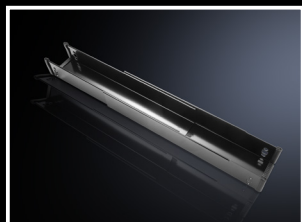
### Material:

- Carbon steel

### Color:

- Black

For enclosure width mm	Kit	Model No.
750 mm	1	<b>9982.275</b>



# TS IT Pro Cable Management Accessories

## Cable Management wall

Cable management wall with attachment points for tool-less quarter turn cable management accessories, T cutouts for hook and loop cable managers, and dual PDU mounting capability.

For enclosure height	Kit	Model No.
42 U	2	<b>9982.295</b>
48 U	2	<b>9982.296</b>
53 U	2	<b>9982.297</b>

### Installation options:

- Attaches to enclosure frame

### Material:

- Carbon steel

### Color:

- Black



## Roof Mount Cable Manager for cable routing

Organizes overhead cable runs between racks and cable access slots in the enclosure roof.

For enclosure width mm	Kit	Model No.
600 mm	1	<b>9982.270</b>
750 mm	1	<b>9982.271</b>

### Installation options:

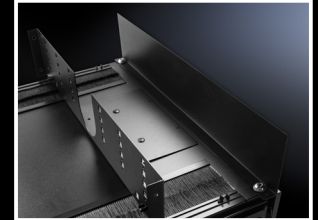
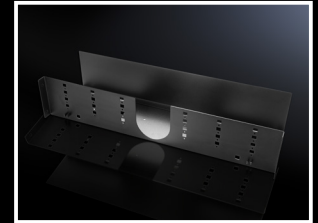
- Mounts to enclosure roof in front as well as the rear

### Material:

- Carbon steel

### Color:

- Black



## Roof Mount Cable Manager End Plate

End plate mounts to Roof Mount Cable Manager to shield view of cabling. One kit needed per row of Roof Mount Cable Manager.

Version	Kit	Model No.
Front/rear	1	<b>9982.238</b>

### Material:

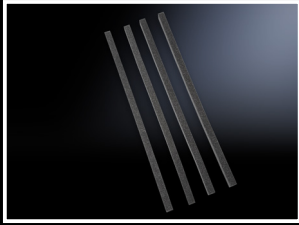
- Carbon steel

### Color:

- Black



# TS IT Pro Airflow Management Accessories



## Foam baffle

### for TS IT Pro

Improves air flow management by preventing cold air from bypassing the IT equipment. Applicable for 600 mm wide enclosures without sidewalls. Includes baffles for both left and right sides.

#### Material:

- Cellular PU foam

#### Color:

- Black

Height units U	For enclosure width mm	Kit	Model No.
42 U	600 mm	1	<b>9982.261</b>
48 U	600 mm	1	<b>9982.262</b>
53 U	600 mm	1	<b>9982.263</b>



## Brush baffle

### for TS IT Pro

Improves air flow management by preventing cold air from bypassing the IT equipment. Brushes allow for cable routing from front to rear in the zero-U-space. Mounts to frame and center chassis blocking airflow between sidewalls and the 19" EIA rails.

#### Material:

- Carbon Steel support with brushes
- Bristles: Plastic, UL 94-HB

#### Color:

- Black

Height units U	For enclosure width mm	Kit	Model No.
42 U	750 mm	2	<b>9982.264</b>
48 U	750 mm	2	<b>9982.265</b>
53 U	750 mm	2	<b>9982.266</b>



## Top metal baffle

### for TS IT Pro

Improves airflow management by preventing cold air from bypassing the IT equipment. Mounts to the top horizontal frame at the front of the rack.

#### Installation options:

- Attaches to enclosure frame

#### Material:

- Carbon steel

#### Color:

- Black

For enclosure width mm	Kit	Model No.
600 mm	1	<b>9982.267</b>
750 mm	1	<b>9982.268</b>



# TS IT Pro Rack Accessories

## Anti-Tip brackets

### for TS IT Pro

Provides anti-tip support when installing or changing equipment in a standalone rack.

#### Installation options:

- Mounts to front of enclosure

#### Material:

- Carbon steel

#### Color:

- Black

For enclosure width mm	Kit	Model No.
600 mm	1	<b>9982.291</b>
750 mm	1	<b>9982.292</b>



## Bolt down bracket kit

### for TS IT Pro

Front and rear bolt down brackets for securely attaching enclosure to the floor. Bracket is adjustable to accommodate the use of leveling feet. Front bracket blocks front to rear airflow under the rack.

#### Installation options:

- Attaches to front and rear of cabinet

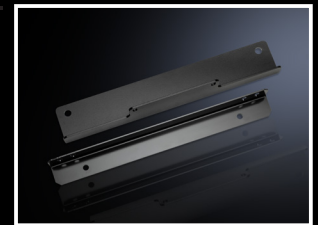
#### Material:

- Carbon steel

#### Color:

- Black

For enclosure width mm	Kit	Model No.
600 mm	1	<b>9982.293</b>
750 mm	1	<b>9982.294</b>



## Handles

### for TS IT Pro

Handles to allow for alternate locking systems.

#### Installation options:

- Mounts to front and rear doors

#### Material:

- Die cast zinc

#### Color:

- Black

Description	Kit	Model No.
Comfort handle for semi-cylinder inserts	1	<b>8611.360</b>
3 digit combination security handle	1	<b>7200.801</b>
Comfort handle for round insert	1	<b>8611.350</b>



# TS IT Pro Rack Accessories



## Lock Inserts

### for TS IT Pro

Comfort Handle for round inserts

#### Installation options:

- Installs on standard handle in enclosure

Description	Kit	Model No.
Push-button, key lock with 2123 lock	1	<b>8611.200</b>
Push-button without Key Lock	1	<b>8611.190</b>
Lock Number 3524	1	<b>8611.180</b>



## Lock Inserts

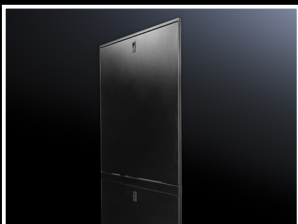
### for TS IT Pro

Comfort Handle for semi-cylinder inserts

#### Installation options:

- For installation in alternative Comfort Handle part number 8611.360 and Combination Security Handle 7200.801

Description	Kit	Model No.
Push button, key lock with 2123 lock	1	<b>2469.000</b>
Push Button without Key Lock	1	<b>2468.000</b>
Lock Number 3524 E	1	<b>2467.000</b>



## Side Panels

### for TS IT Pro

Half-height quick release lockable side panels, for easy access for cable and equipment installations. Kit includes left and right side panels.

#### Installation options:

- Flush mounted with keyed lock inserts, matching door keys

#### Material:

- Carbon steel

#### Color:

- Black

Height units U	For enclosure width mm	Kit	Model No.
42 U	1070 mm	1	<b>9982.234</b>
42 U	1200 mm	1	<b>9982.235</b>
48 U	1070 mm	1	<b>9982.236</b>
48 U	1200 mm	1	<b>9982.237</b>
53 U	1070 mm	1	<b>9982.299</b>
53 U	1200 mm	1	<b>9982.300</b>

# TS IT Pro Rack Accessories

## PDU Mount Bracket

### for TS IT Pro

For mounting additional PDU's in the zero-U space. Accepts standard PDU mounting buttons. Kit includes 2 brackets for mounting a single PDU.

### Installation options:

- Mounts to 19" EIA rails in the zero-U space

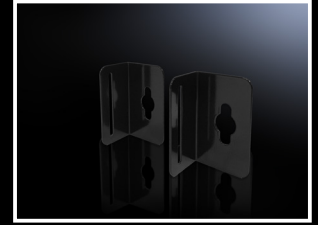
### Material:

- Carbon steel

### Color:

- Black

For enclosure width mm	Kit	Model No.
750 mm	1	9982.276



# Rittal – The System.

Faster – better – everywhere.

- Enclosures
- Power Distribution
- Climate Control
- IT Infrastructure
- Software & Services

You can find the contact details of all Rittal companies throughout the world here.



[www.rittal.com/contact](http://www.rittal.com/contact)

ENCLOSURES

POWER DISTRIBUTION

CLIMATE CONTROL

IT INFRASTRUCTURE

SOFTWARE & SERVICES



FRIEDHELM LOH GROUP