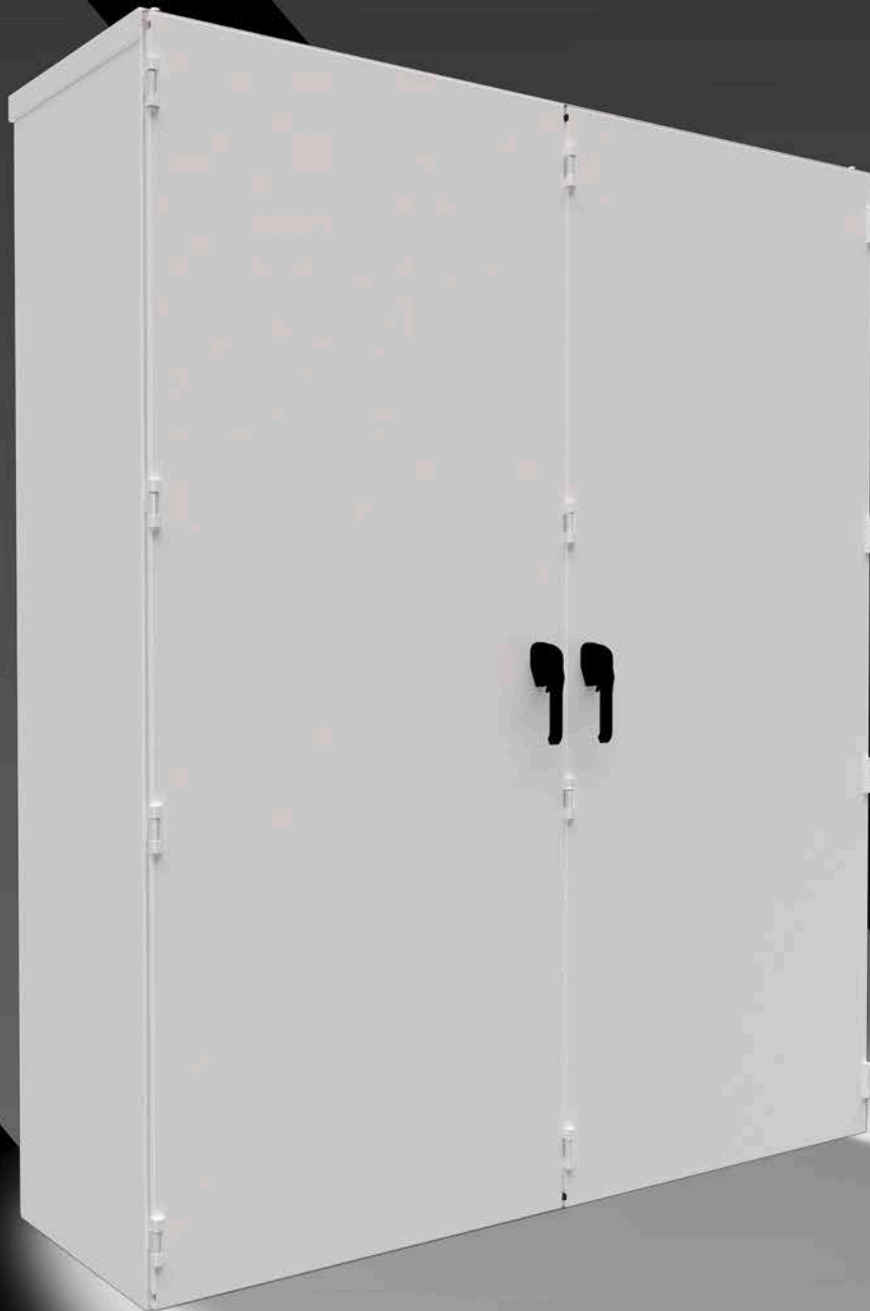


Rittal – The System.

Faster – better – everywhere.



VX25.
**SYSTEM
PERFECTION.**



VX Hybrid
**DOUBLE
DOOR**

ENCLOSURES

POWER DISTRIBUTION

CLIMATE CONTROL

IT INFRASTRUCTURE

SOFTWARE & SERVICES



FRIEDHELM LOH GROUP

VX HYBRID DOUBLE DOOR ENCLOSURE: **STRENGTH MEETS PORTABILITY**

Traditional enclosures can be a headache for panel builders, shop floor managers, and engineers—they're heavy, cumbersome, and require extensive manpower and equipment to move, leading to delays and increased risks.

Rittal solves this with the VX Hybrid Double Door, a robust yet lightweight enclosure solution, perfect for applications where simple, quick deployment, portability, and safety are critical.



What's in It for You?

- **Quick Deployment:** A single-footprint design requires no on-site assembly for reduced setup time
- **Easy Movement:** The lighter frame allows safer handling without forklifts or extra personnel
- **Maximum Strength:** The rigid frame structure matches the durability of heavier enclosures while maintaining portability
- **Streamlined Installation:** A removable mullion enables a full-width mounting panel for simplified integration and maintenance
- **Simple Modification:** The lighter design makes placing the enclosure in modification machines easy, while the build produces less tooling wear
- **Adaptable to Your Needs:** The enclosure is fully compatible with VX25 accessories and future disconnect module upgrades to meet changing requirements
- **Trusted US Manufacturing:** Made in our Urbana, OH facility, this enclosure is specifically engineered for US industries



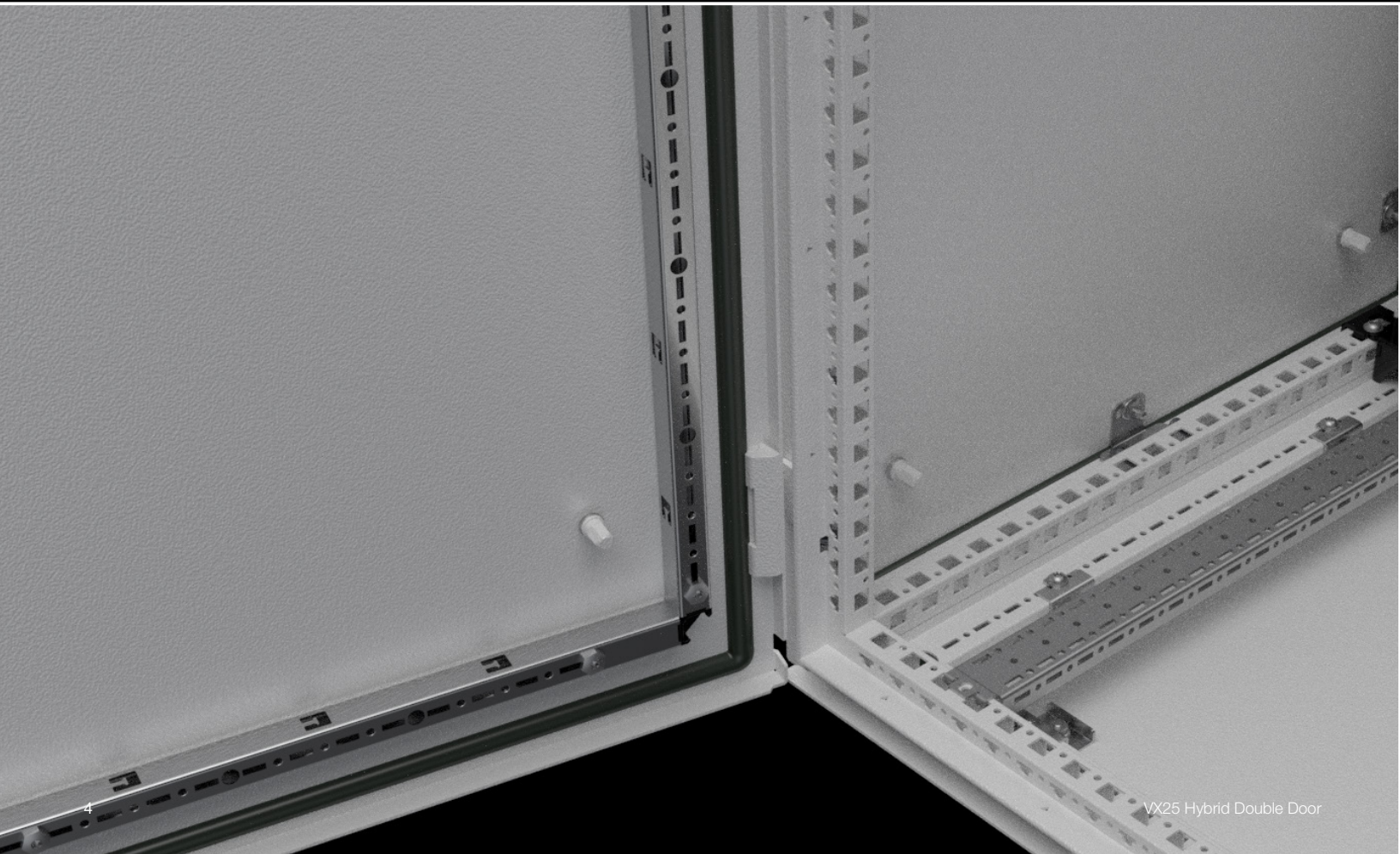
Built for Performance, Designed for Tough Environments



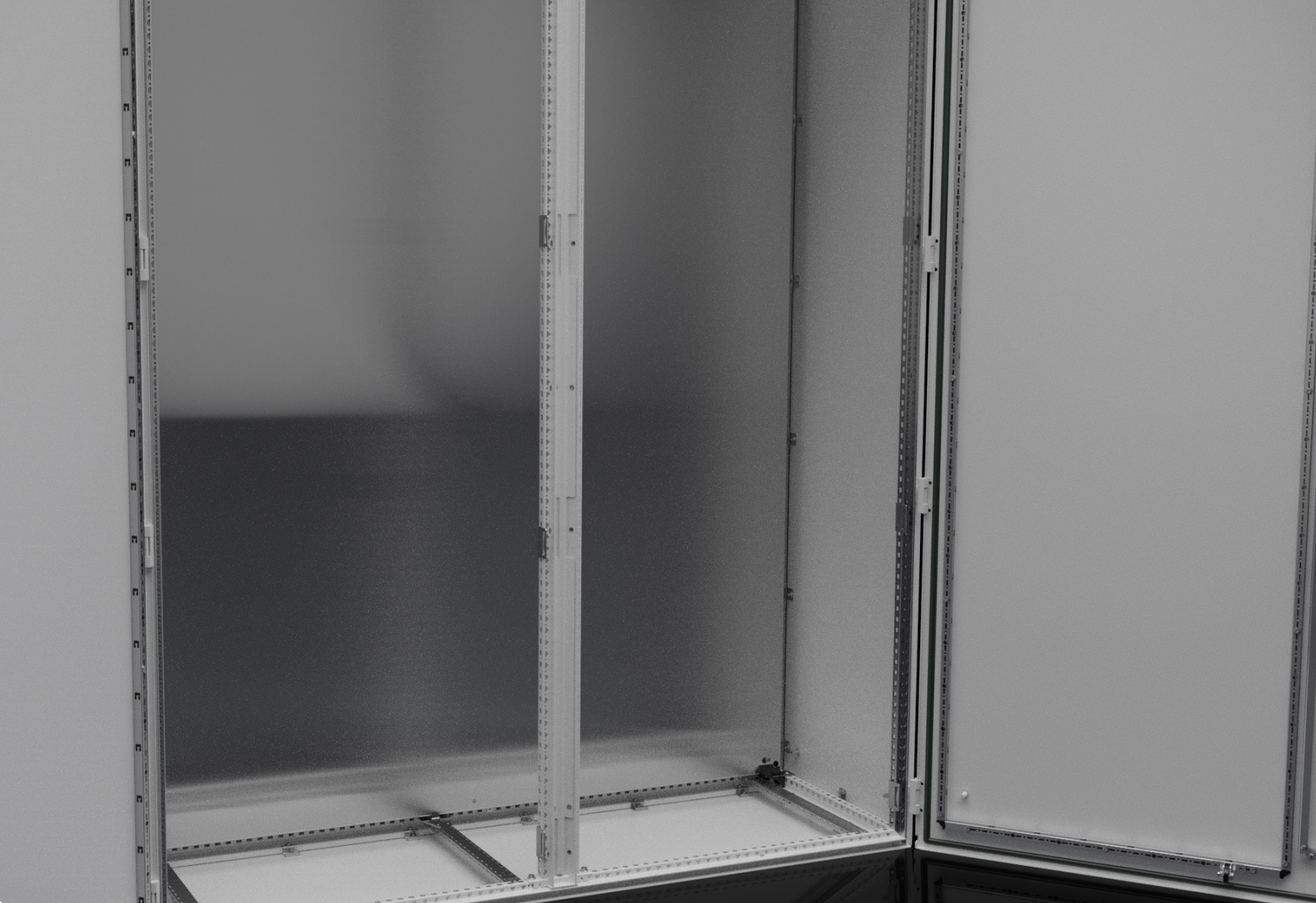
With a frame-mounted panel for added rigidity, VX25 accessory compatibility, and a durable yet lightweight design, the VX Hybrid Double Door is the smart investment for projects that demand mobility, strength, and ease of use.

Perfect for Industries Like:

- Mining & Construction
- Utilities
- Oil & Gas
- Water & Waste
- Food & Beverage
- Outside Plant
- Energy & Energy Storage
- Agriculture
- Pulp & Paper



VX25 Hybrid Double Door



Accelerate Projects with Confidence

Downtime and safety risks can derail even the best planned projects. The VX Hybrid Double Door ensures that operating teams and managers keep installations on schedule while safeguarding both critical electrical components and their people every step of the way.

The VX Hybrid Double Door Helps You:

- Minimize Downtime
- Enhance On the Job Safety
- Protect Sensitive Electronics
- Simplify Maintenance
- Standardize Operations

Empower your teams to move fast, stay safe, and deliver flawless electrical protection every time.



Time savings

Precise hole counting offers an easy point of orientation at all levels of the enclosure frame when fixing rails and punched sections in place.



Health and safety at work

Rounded edges ensure optimum work safety standards when populating the enclosure.

Stability

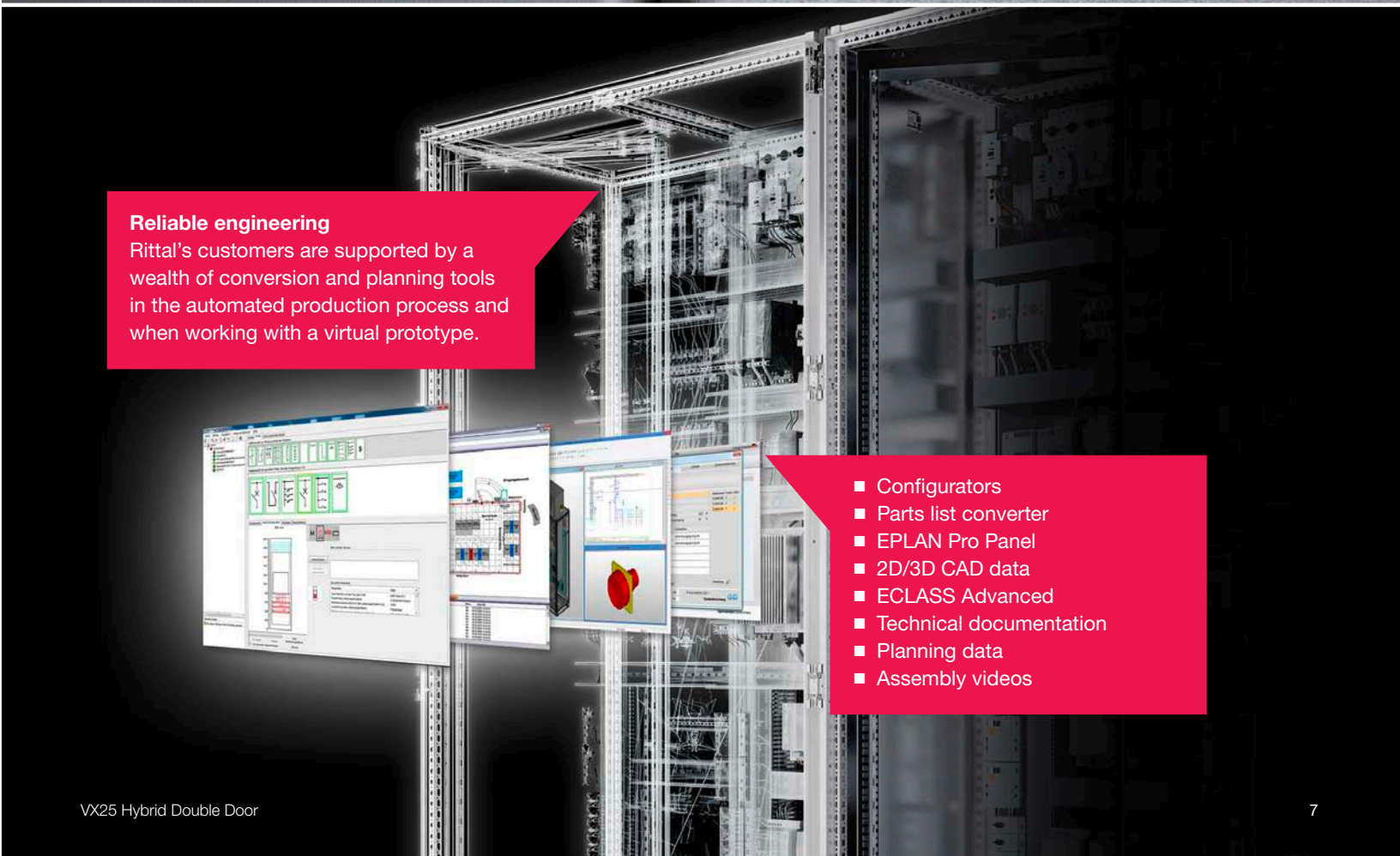
The seamlessly laser-welded, rolled enclosure profile ensures optimum force transmission on installed equipment.



Corrosion protection

The three-stage surface treatment process guarantees maximum protection against corrosion and is resistant to mineral oils, lubricants, machining emulsions, and most solvents.

- 1 Nanoceramic treatment
- 2 Electrophoretic dipcoat priming
- 3 Powder coating



Reliable engineering

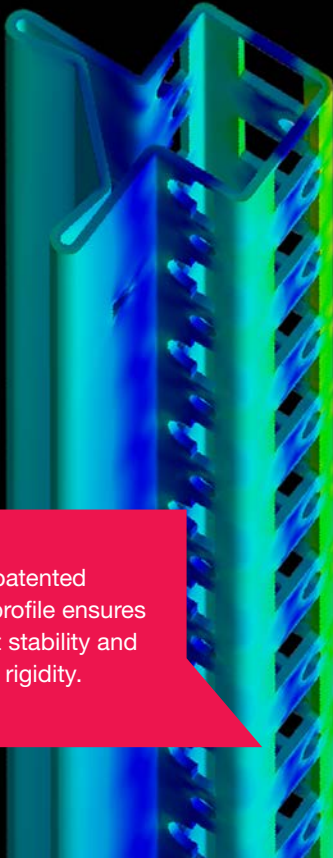
Rittal's customers are supported by a wealth of conversion and planning tools in the automated production process and when working with a virtual prototype.

- Configurators
- Parts list converter
- EPLAN Pro Panel
- 2D/3D CAD data
- ECLASS Advanced
- Technical documentation
- Planning data
- Assembly videos

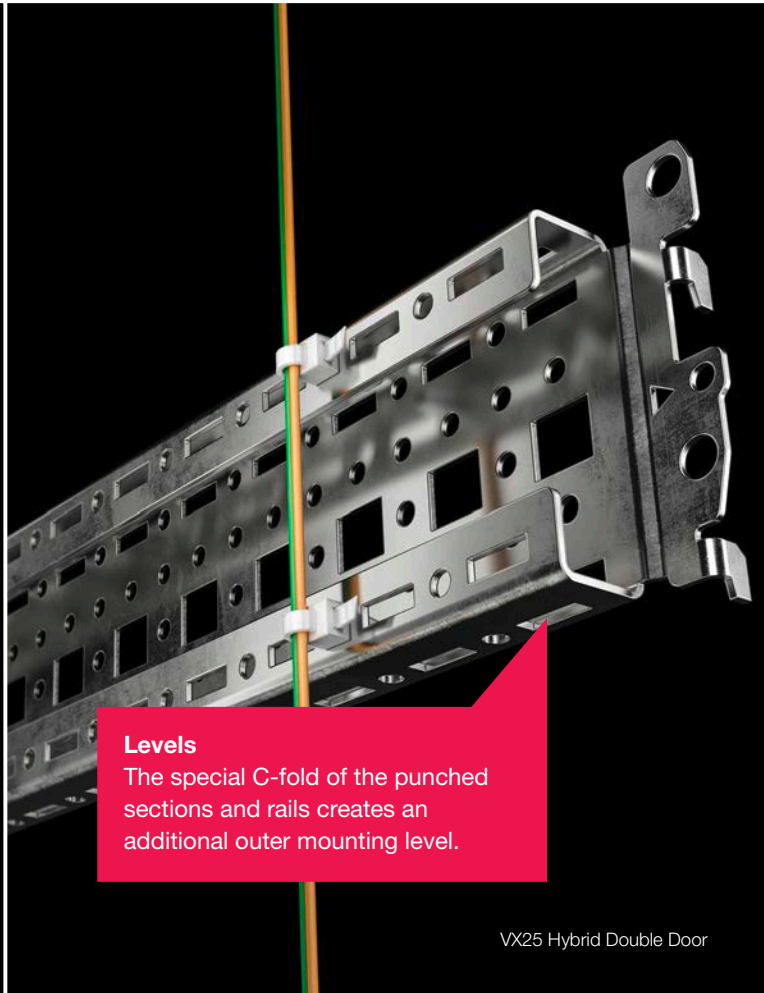


Accessibility
The system offers an outer mounting level in addition to the inner level, making the enclosure readily accessible and configurable from the outside.

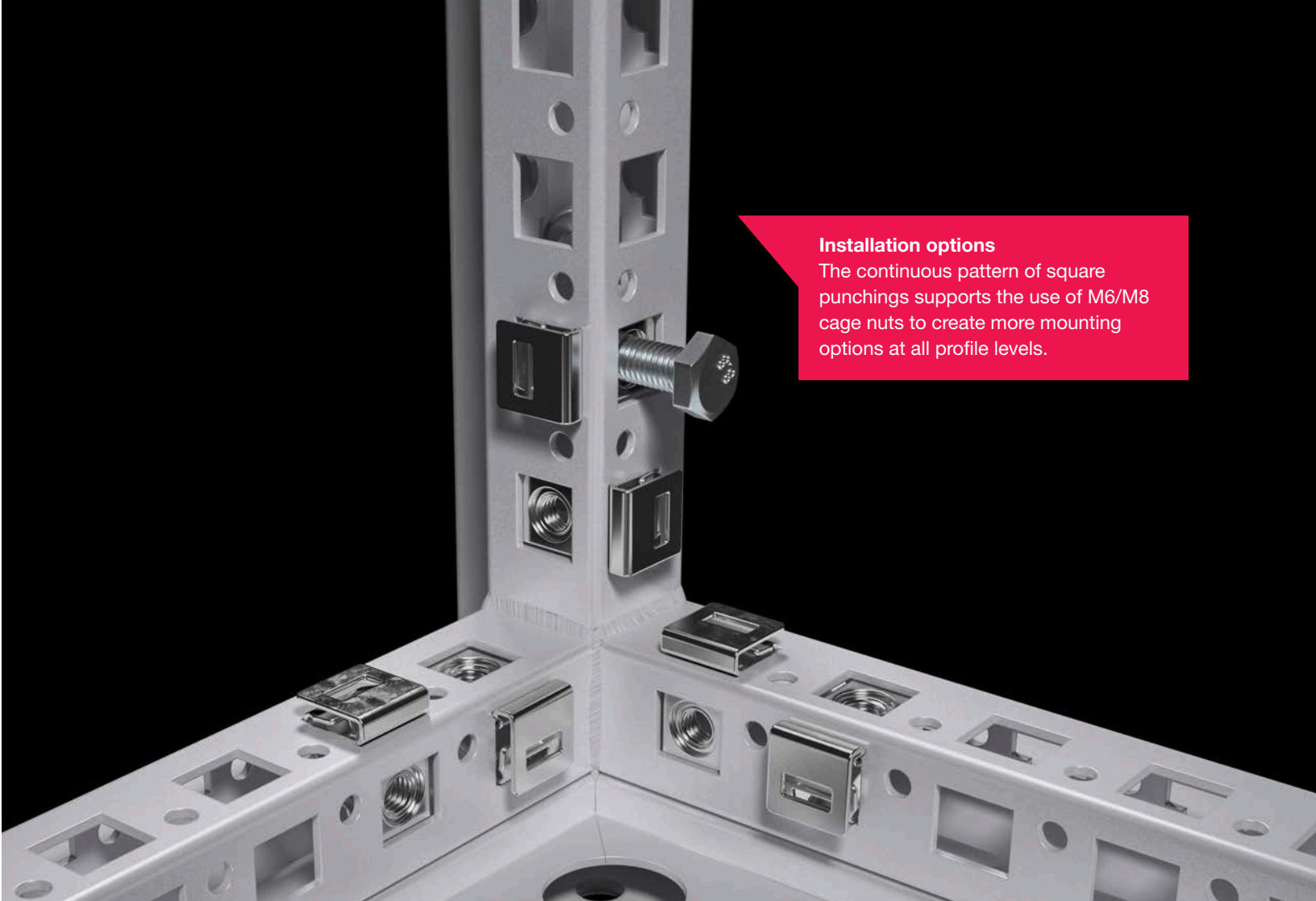
A: Static Structural
Equivalent Stress
Type: Equivalent (von-Mises) Stress
Unit: MPa
Time: 1
07.03.2018 14:25



Stability
Thanks patented special profile ensures excellent stability and torsional rigidity.

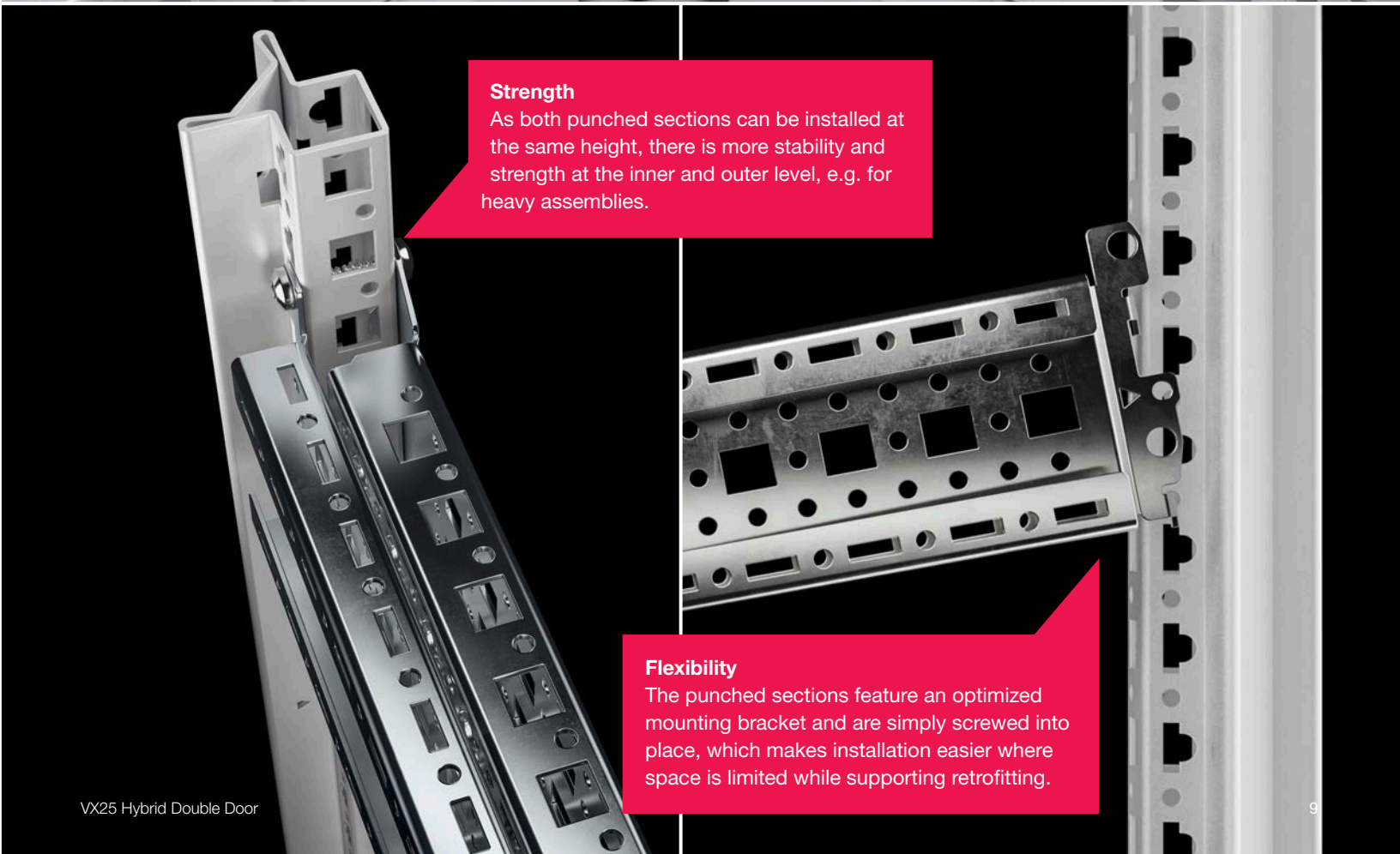


Levels
The special C-fold of the punched sections and rails creates an additional outer mounting level.



Installation options

The continuous pattern of square punchings supports the use of M6/M8 cage nuts to create more mounting options at all profile levels.



Strength

As both punched sections can be installed at the same height, there is more stability and strength at the inner and outer level, e.g. for heavy assemblies.

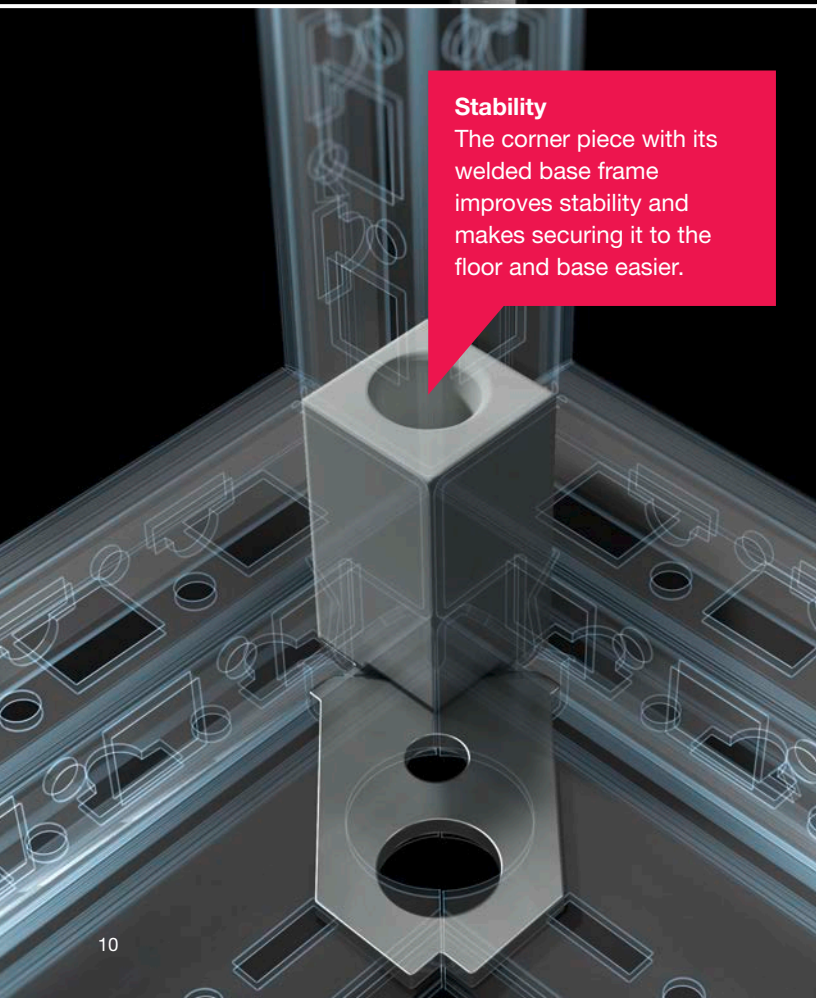
Flexibility

The punched sections feature an optimized mounting bracket and are simply screwed into place, which makes installation easier where space is limited while supporting retrofitting.



Ease of assembly

The frame profile allows users to install elements working through the profile from the outside, making it much easier to retrofit punched sections in places that can no longer be reached from the inside.



Stability

The corner piece with its welded base frame improves stability and makes securing it to the floor and base easier.

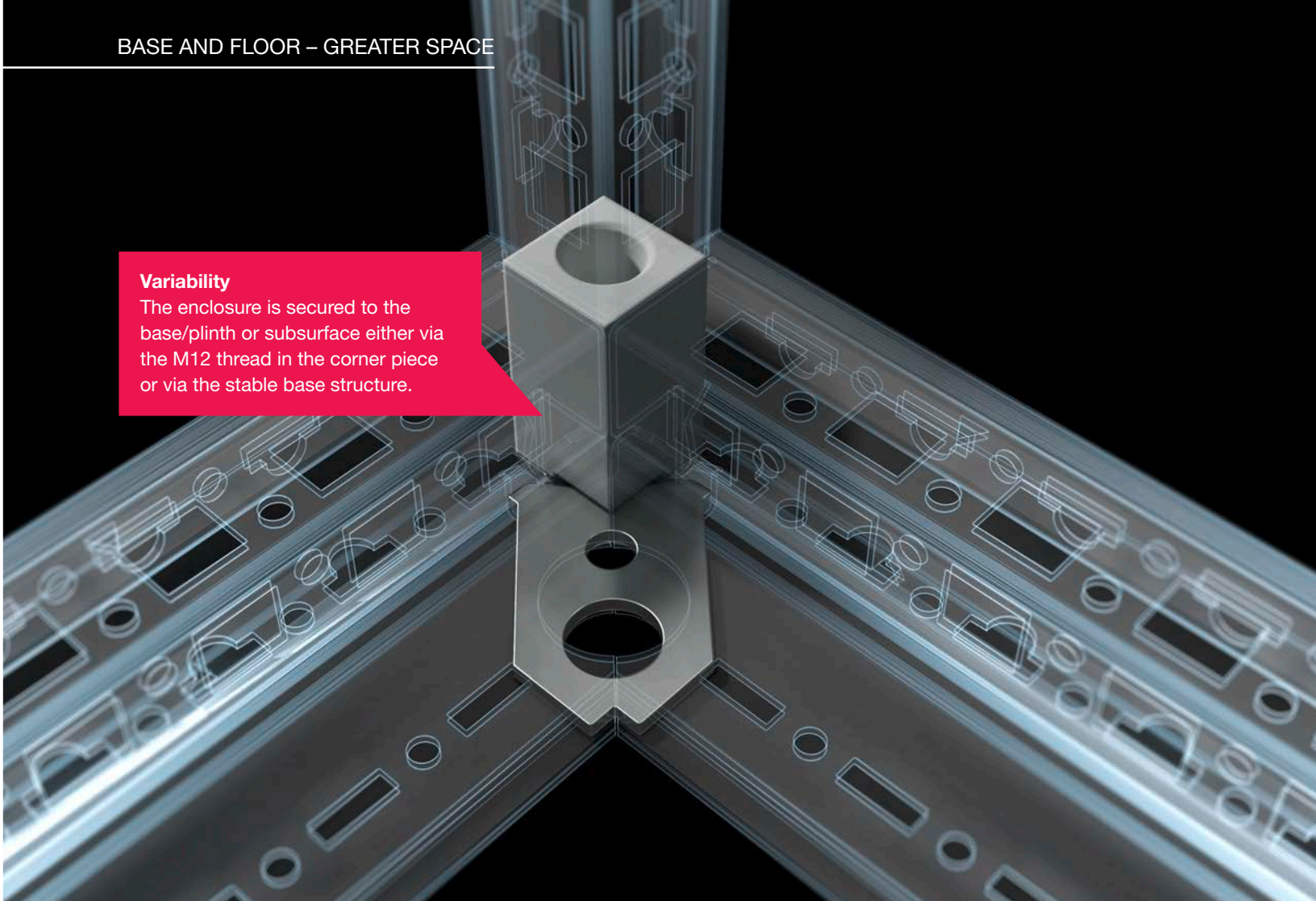


Precision

The centring aid for base/plinth mounting on the enclosure frame ensures the enclosure is positioned precisely on the base/plinth while maintaining the IP protection category and frame protection when used without a base/plinth.

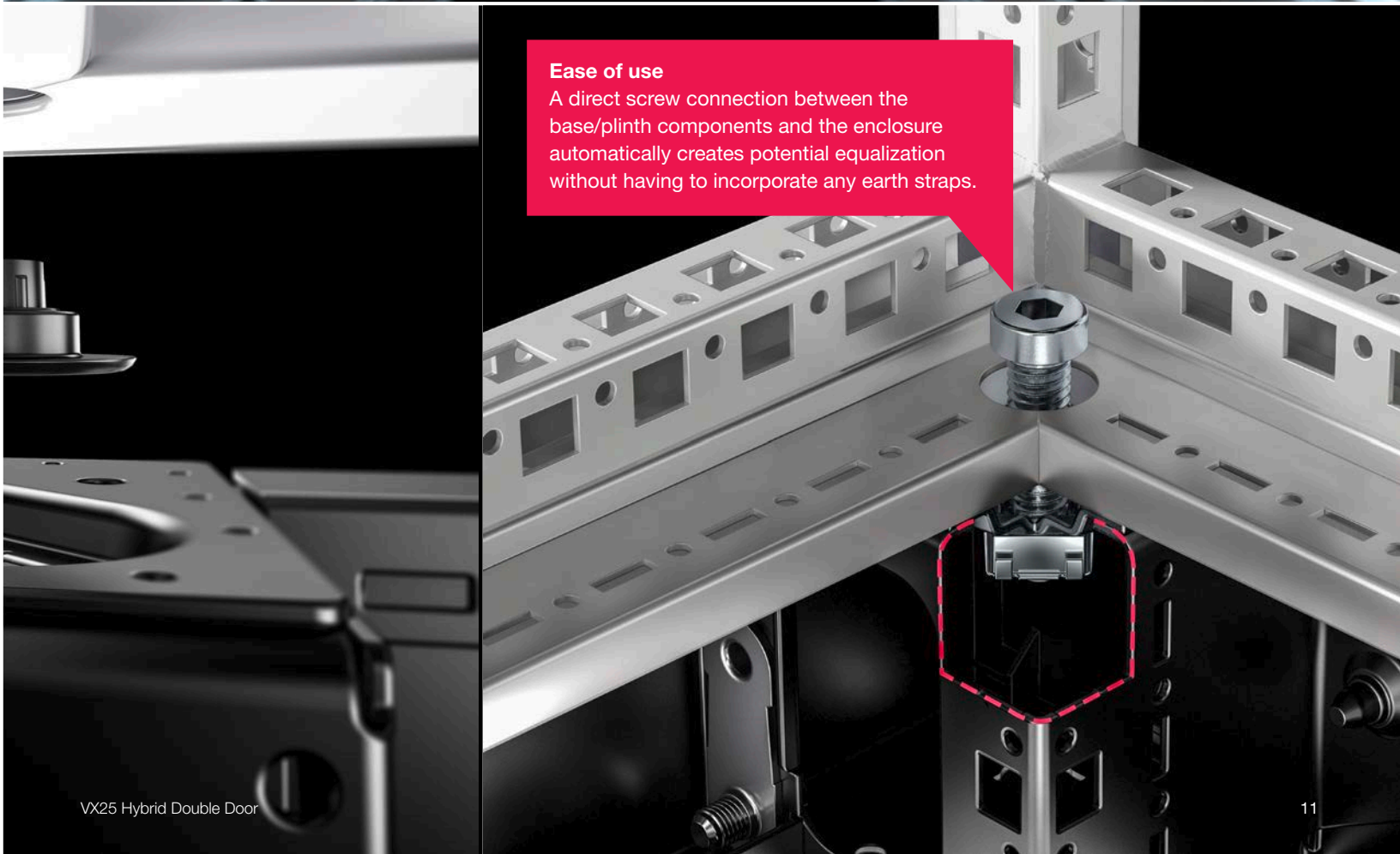
Variability

The enclosure is secured to the base/plinth or subsurface either via the M12 thread in the corner piece or via the stable base structure.



Ease of use

A direct screw connection between the base/plinth components and the enclosure automatically creates potential equalization without having to incorporate any earth straps.



MOUNTING PLATE – GREATER **EASE OF ASSEMBLY**

More time gains, installation options and assembly-friendliness thanks to improved installation kits – also suitable for dynamic loads.



Additional benefits

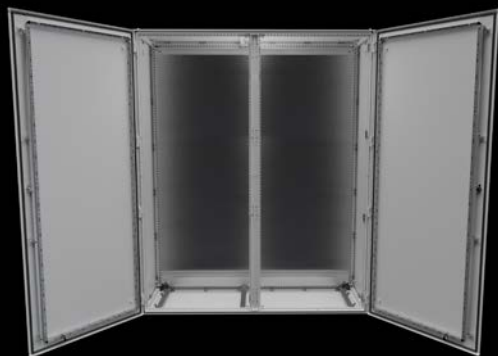
The practical mounting plate slide rail can be removed once the mounting plate has been inserted and used elsewhere in the enclosure as a fully functional punched section.



Convenient fixing

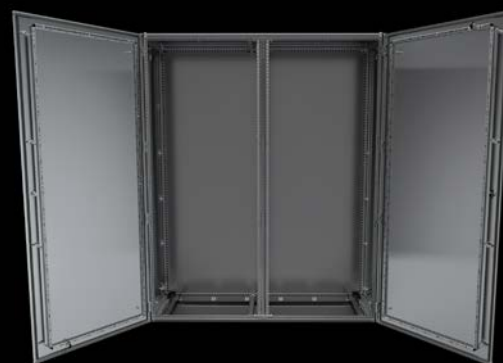
The clip at the top of the mounting plate holds it in place during one-person assembly until the plate can be screwed into position.

VX Hybrid Double Door - Carbon Steel



VX Hybrid Double Door - Carbon Steel	
Part Numbers	
9840300	63x63x16 in (1600x1600x400 mm) - NEMA 4
9840301	71x63x20 in (1800x1600x500 mm) - NEMA 4
9840302	71x71x24 in (1800x1800x600 mm) - NEMA 4
9840303	79x71x24 in (2000x1800x600 mm) - NEMA 4
9840304	87x71x24 in (2200x1800x600 mm) - NEMA 4
Material	
Enclosure frame	Carbon steel, 0.06" (1.5mm)
Roof	Carbon steel, 0.06" (1.5mm)
Door	Carbon steel, 0.08" (2.0mm)
Side/rear panels	Carbon steel, 0.06" (1.5mm)
Base plate	Carbon steel, 0.08" (2.0mm)
Mounting plate	Carbon steel, 0.12" (3.0 mm)
Surface Finish	
Enclosure frame	Dipcoat-primed with powder-coat finish
Roof, door, side/rear panel, base plate	Dipcoat-primed with powder-coat finish
Mounting plate	Zinc-plated
Supply Includes	
Enclosure frame	
Doors - center latched, can be hinged left or right	
Center mullion - removable	
Roof plate with overlapping sides, back, and drip shield	
Solid base	
Side/rear panels	
Mounting plate	
Heavy-duty padlockable handle	
Protection category to IEC 60 529	
IP 66	
Protection category NEMA	
NEMA 12, 3R, 4	
Type rating to UL 50E	
Type 12, 3R, 4	

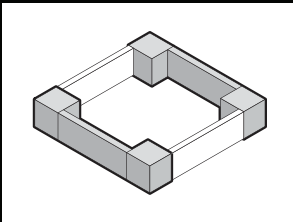
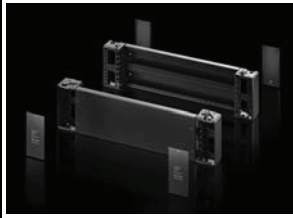
VX Hybrid Double Door - Stainless Steel



VX Hybrid Double Door - Stainless Steel	
Part Numbers	
9840305	63x63x16 in (1600x1600x400 mm) - NEMA 4X
9840306	71x63x20 in (1800x1600x500 mm) - NEMA 4X
9840307	71x71x24 in (1800x1800x600 mm) - NEMA 4X
9840308	79x71x24 in (2000x1800x600 mm) - NEMA 4X
9840309	87x71x24 in (2200x1800x600 mm) - NEMA 4X
Material	
Enclosure frame	Stainless steel 1.4301 (AISI 304), 0.06 in (1.5 mm)
Roof	Stainless steel 1.4301 (AISI 304), 0.06 in (1.5 mm), exterior brushed
Door	Stainless steel 1.4301 (AISI 304), .08 in (2.0 mm), exterior brushed
Side/rear panels	Stainless steel 1.4301 (AISI 304), 0.06 in (1.5 mm), exterior brushed
Base plate	Stainless steel 1.4301 (AISI 304), 0.08 in (2.0mm)
Mounting plate	Carbon steel, 0.12 in (3.0 mm)
Surface Finish	
Enclosure frame	Uncoated
Roof, doors, side/rear panels, base plate	Exterior brushed, grain size 400
Mounting plate	Zinc-plated
Supply Includes	
Enclosure frame	
Doors - center latched, can be hinged left or right	
Center mullion - removable	
Roof plate with overlapping sides, back, and drip shield	
Solid base	
Side/rear panels	
Mounting plate	
Heavy-duty stainless-steel padlockable handle	
Protection category to IEC 60 529	
IP 66	
Protection category NEMA	
NEMA 12, 3R, 4X	
Type rating to UL 50E	
Type 12, 3R, 4X	

Base/Plinth

Base/plinth system VX



Base/plinth corner pieces with base/plinth trim panels, front and rear

Carbon steel

High-load capacity base/plinth corner pieces with moulded self-positioning to the enclosure, may be used with or without trim panels depending on the application. Large openings in the corner piece for optimum access to the screw-fastening point, may be concealed with a plastic corner cover.

Material:

- Base/plinth corner piece: Carbon steel
- Base/plinth trim panel front/rear: Carbon steel
- Corner cover: Plastic

Color:

- RAL 9005

100 mm high supply includes:

- 4 base/plinth corner pieces, 100 mm high
- 4 corner covers
- 2 base/plinth trim panels, front/rear, 100 mm high
- Assembly parts

200 mm high supply includes:

- 4 base/plinth corner pieces, 200 mm high
- 4 corner covers
- 1 base/plinth trim panel, front/rear, 200 mm high
- 2 base/plinth trim panels, front/rear, 100 mm high
- Assembly parts

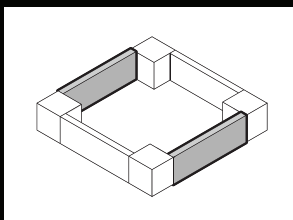
100 mm high

For enclosure width mm	Model No.
1600	8660.008
1800	8660.009

200 mm high

For enclosure width mm	Model No.
1600	8660.026
1800	8660.027

Base/plinth system VX



Base/plinth trim panel, sides

Carbon steel

To finish off a base/plinth unit at the sides and for additional stability or interior configuration of bayed base/plinths. One 200 mm high or two 100 mm high trim panels may optionally be fitted on 200 mm high base/plinths.

Material:

- Carbon steel

Color:

- RAL 9005

Supply includes:

- 2 base/plinth trim panels
- Assembly parts

100 mm high

For enclosure depth mm	Model No.
400	8660.031
500	8660.032
600	8660.033

200 mm high

For enclosure width mm	Model No.
400	8660.041
500	8660.042
600	8660.043

Floor Stand Kits

For enclosure floor mounting.

Material:

- Carbon Steel

Material:

- Stainless Steel 1.4404 (AISI 316)

For enclosure depth mm	Height	Model No.
400	300	9963.522
500	300	9963.523
600	300	9963.524

For enclosure depth mm	Height	Model No.
400	300	9963.528
500	300	9963.529
600	300	9963.530



Base/Plinth

Base/plinth system VX

Base/plinth corner pieces with base/plinth trim panels, front and rear

Stainless steel

High-load capacity base/plinth corner pieces, may be used with or without trim panels depending on the application. Large openings in the corner piece for optimum access to the screw-fastening point, may be concealed with plastic cover caps.

Material:

- Base/plinth corner piece: Stainless steel 1.4301 (AISI 304)
- Base/plinth trim panel, front/rear: Stainless steel 1.4301 (AISI 304)
- Cover caps: plastic, ABS

Surface finish

- Trim panels: Brushed, grain 400

100 mm high supply includes:

- 4 base/plinth corner pieces, 100 mm high
- 4 cover caps
- 2 base/plinth trim panels, front/rear, 100 mm high
- Assembly parts

200 mm high supply includes:

- 4 base/plinth corner pieces, 200 mm high
- 4 cover caps
- 1 base/plinth trim panel, front/rear, 200 mm high
- 2 base/plinth trim panels, front/rear, 100 mm high
- Assembly parts

100 mm high

For enclosure depth mm	Height	Model No.
1600	100	8660.054
1800	100	8660.056

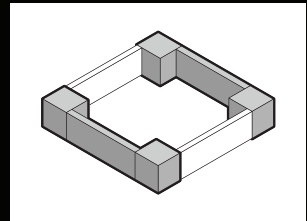
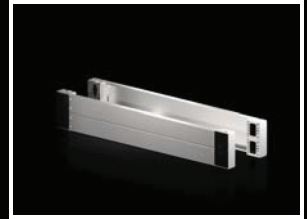
200 mm high

For enclosure depth mm	Height	Model No.
1600	200	8660.064
1800	200	8660.065



Also required:

- Base/plinth trim panels, sides, to finish off a base/plinth unit at the end or for additional stabilization between base/plinths



Base/plinth trim panel, sides

Stainless steel

To finish off a base/plinth unit at the sides and for additional stability of bayed base/plinths. One 200 mm high or two 100 mm high trim panels may optionally be fitted on 200 mm high base/plinths.

Material:

- Stainless steel 1.4301 (AISI 304)

Surface finish:

- Brushed, grain size 400

Supply includes:

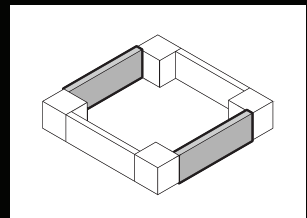
- 2 base/plinth trim panels
- Assembly parts

100 mm high

For enclosure depth mm	Height	Model No.
400	100	8660.070
500	100	8660.071
600	100	8660.072

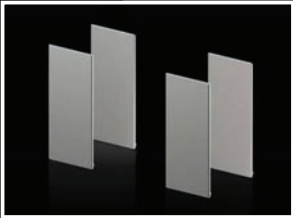
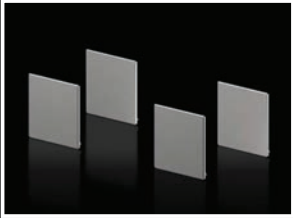
200 mm high

For enclosure depth mm	Height	Model No.
400	200	8660.080
500	200	8660.081
600	200	8660.082



Doors/Locks

Base/plinth system VX



Leveling component

For retrospective levelling on uneven floors at the installation site up to a maximum of 15 mm. Installed through the base/plinth corner piece.

Benefits:

- A door offset caused by uneven flooring can be corrected
- Installed on the assembled enclosure, i.e. no need to plan levelling in advance

Load capacity:

- Max. admissible load: 2500 N per levelling component (check the load capacity of the floor)

Supply includes:

- Assembly parts

For base/plinth height mm	Packs of	Model No.
100	4 pc(s).	8660.120
200	4 pc(s).	8660.121

Cover caps, stainless steel

for base/plinth system VX, stainless steel

To replace the plastic cover caps of the base/plinth corner pieces with base/plinth trim panels, front and rear, included in the supply.

Material	For height mm	Model No.
Stainless steel 1.4301 (AISI 304)	100	8660.500
	200	8660.600

Door, internal

Wiring plan pocket with transparent pouch

With welded-on transparent pouch and self-adhesive backing.

For format	Model No.
A4	2510.000
A3	2512.000

Wiring plan pocket, plastic

For adhering to surfaces.

Material:

- Polystyrene with self-adhesive fastening strips

Color:

- Similar to RAL 7035

For format	Clearance openings mm			Model No.
	W	H	D	
A3 landscape	438	286	45	2513.000
A4 portrait	228	254	17	2514.000
A5 landscape	228	174	17	2515.000

Interior Installation

Mounting plates

Partial mounting plate

To accommodate additional components inside the enclosure. Partial mounting plates are extremely versatile, providing a platform for a diverse range of applications. For optional installation either upright as a vertical mounting surface, or flat as a horizontal base. For attachment either directly to the enclosure section or, with a set-forward construction, for example, to any mounting level in the enclosure using punched sections with mounting flanges. For multi-level installation one behind the other, partial mounting plates may be vertically hinged, via hinge attachment 8617.650, to allow rapid access to the levels behind.

Material:

- Carbon steel, 2.5 mm

Surface finish:

- Zinc-plated

Supply includes:

- Assembly parts

Note:

- Depending on the mounting situation, additional parts such as punched sections with mounting flanges may be required, see installation example.



Accessories:

- Punched section with mounting flange for the inner and outer level, see page 22
- Hinge attachment 8617.650

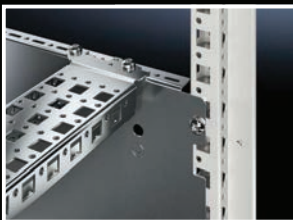


For installation in										Door width mm	Dimensions mm	Packs of	Model No.
Enclosure width mm					Enclosure depth (side) mm								
400	600	800	1000	1200	400	500	600	800					
■	■				■		■		600	500 x 300	1 pc(s).	8617.510	
	■					■	■		600	500 x 400	1 pc(s).	8617.520	
	■						■		600	500 x 500	1 pc(s).	8617.530	
	■	■					■	■	600	500 x 700	1 pc(s).	8617.540	
	■						■		600	500 x 775	1 pc(s).	8617.550	
■		■			■			■	800	700 x 300	1 pc(s).	8617.560	
		■				■		■	800	700 x 400	1 pc(s).	8617.570	
		■						■	800	700 x 700	1 pc(s).	8617.580	
■			■		■				1000	900 x 300	1 pc(s).	8617.590	
			■			■			1000	900 x 400	1 pc(s).	8617.600	
	■		■					■	1000	900 x 500	1 pc(s).	8617.610	
■				■	■				-	1100 x 300	1 pc(s).	8617.620	
				■		■			-	1100 x 400	1 pc(s).	8617.630	
	■			■			■		-	1100 x 500	1 pc(s).	8617.640	



Interior Installation

Mounting plates



Partial assembly plate VX

To accommodate additional components inside the enclosure. Partial assembly plates are extremely versatile, providing a platform for a diverse range of applications. They are attached directly to the enclosure section. For individual interior installation, system punchings are additionally provided in the edge fold.

Material:

- Carbon steel, 1.5 mm

Surface finish:

- Zinc-plated

Supply includes:

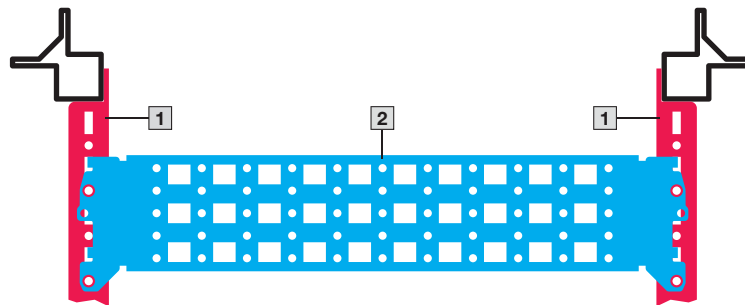
- Assembly parts

Dimensions mm	Packs of	Model No.
500 x 400	1 pc(s).	8617.660
500 x 600	1 pc(s).	8617.661
600 x 400	1 pc(s).	8617.662
600 x 600	1 pc(s).	8617.663
800 x 400	1 pc(s).	8617.664
800 x 600	1 pc(s).	8617.665

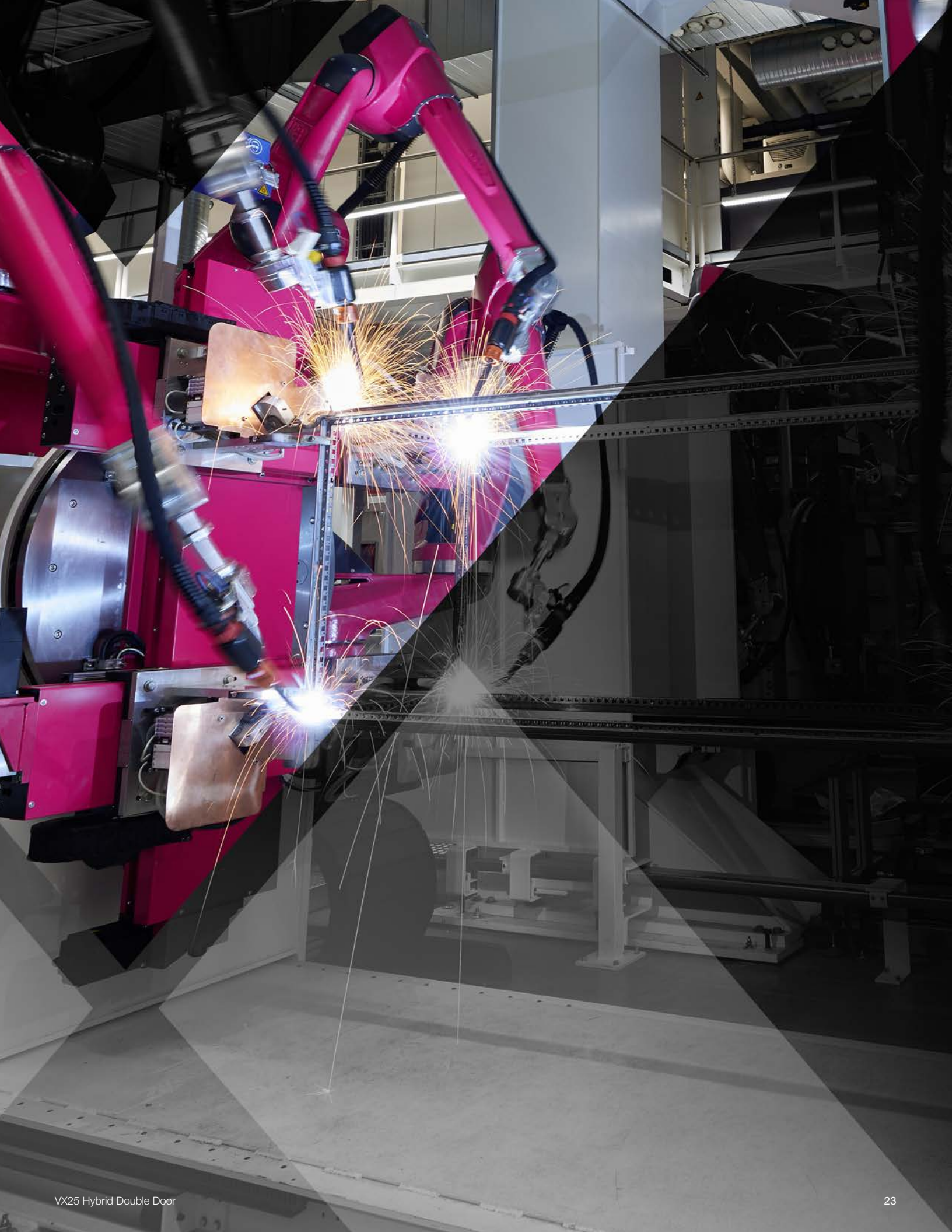
Outer mounting level



Inner mounting level

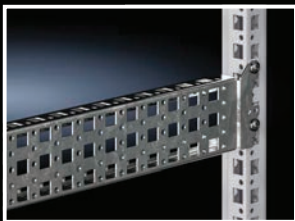
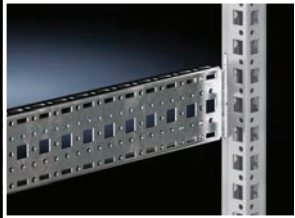
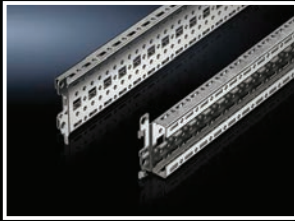


- 1 Partial assembly plate
- 2 Punched section with mounting flange, 23 x 64 mm



Interior Installation

Rail systems



Punched section with mounting flange, 18 x 64 mm

For variable, individual interior installation of the enclosure frame on the outer mounting level. Simply locate into the system punchings from the outside and screw-fasten. System punchings on all four sides.

Installation options:

- On the outer mounting level, on the enclosure section
- On the outer mounting level, between two punched sections with mounting flanges 23 x 64 mm

Material:

- Carbon steel

Surface finish:

- Zinc-plated

Supply includes:

- Assembly parts

For enclosure width/height/depth mm	Packs of	Model No.
300	4 pc(s).	8617.000
400	4 pc(s).	8617.010
500	4 pc(s).	8617.020
600	4 pc(s).	8617.030
800	4 pc(s).	8617.040
1000	4 pc(s).	8617.050
1200	4 pc(s).	8617.060

Punched section with mounting flange, 23 x 64 mm

For variable, individual interior installation of the enclosure frame on the inner mounting level. Simply locate into punchings and screw-fasten. System punchings on all four sides. With slots at the top and bottom for cage nuts, for attaching your own components via metric screws.

Installation options:

- On the inner mounting level, on the enclosure section
- On identical punched sections with mounting flanges
- Base/plinth system VX in the width and depth, combined with a base/plinth installation bracket

Material:

- Carbon steel

Surface finish:

- Zinc-plated

Supply includes:

- Assembly parts

For enclosure width/height/depth mm	Packs of	Model No.
300	4 pc(s).	8617.100
400	4 pc(s).	8617.110
500	4 pc(s).	8617.120
600	4 pc(s).	8617.130
800	4 pc(s).	8617.140
1000	4 pc(s).	8617.150
1200	4 pc(s).	8617.160
1400	4 pc(s).	8617.170
1600	4 pc(s).	8617.180
1800	4 pc(s).	8617.190
2000	4 pc(s).	8617.200
2200	4 pc(s).	8617.210

Punched section without mounting flange, 23 x 64 mm

For variable, individual interior installation of the enclosure frame on the inner mounting level. When mounted, the punched sections and rails sit flush to the enclosure frame. Thanks to the additional mounting bracket, they can be used with a pre-installed mounting plate and can also be cut to any required length. System punchings on all four sides. With slots at the top and bottom for cage nuts, for attaching your own components via metric screws.

Installation options:

- On the inner mounting level, on the enclosure section
- Upright or flat between two punched sections
- Between two punched sections on the inner mounting level

Material:

- Carbon steel

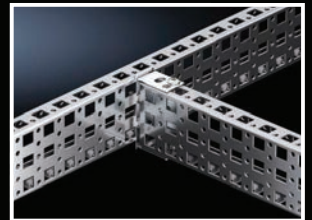
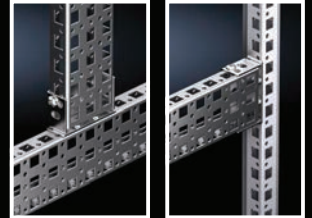
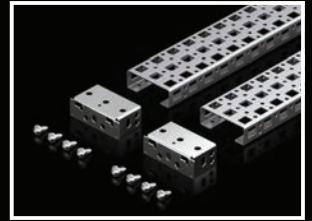
Surface finish:

- Zinc-plated

Supply includes:

- 1 pack =
2 punched sections without mounting flanges
23 x 64 mm
4 mounting brackets

For enclosure width/height/depth mm	Packs of	Model No.
400	2 pc(s).	8100.740
500	2 pc(s).	8100.741
600	2 pc(s).	8100.742
800	2 pc(s).	8100.743
1200	2 pc(s).	8100.745



Punched section with mounting flange, 23 x 89 mm

For variable, individual interior installation of the enclosure frame on the inner mounting level. Simply locate into punchings and screw-fasten. System punchings on all four sides. With slots at the top and bottom for cage nuts, for attaching your own components via metric screws. Especially for cable routing in the base/plinth system VX, stainless steel and for the installation of busbar supports (non-magnetic stainless steel).

Installation options:

- On the inner mounting level, on the enclosure section
- On identical punched sections with mounting flanges
- In the base/plinth system VX, stainless steel, in the width and depth, combined with a base/plinth installation bracket

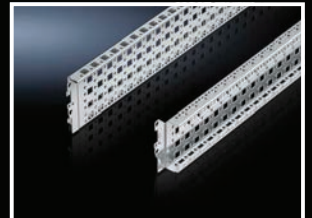
Material:

- Stainless steel

Supply includes:

- Assembly parts

For enclosure width/depth mm	Packs of	Model No.
400	2 pc(s).	8100.730
500	2 pc(s).	8100.731
600	2 pc(s).	8100.732
800	2 pc(s).	8100.733



Interior Installation

Rail systems



Punched rail 18 x 39 mm

For variable, individual interior installation of the enclosure frame on the inner mounting level, may also be used in conjunction with other punched sections. Prepared at the rear to accommodate cable clamps for optimum cable routing inside the enclosure.

Installation options:

- On the inner mounting level, on the enclosure section

Material:

- Carbon steel

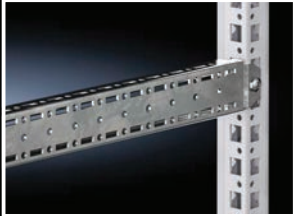
Surface finish:

- Zinc-plated

Supply includes:

- Assembly parts

For enclosure width/depth mm	Packs of	Model No.
400	4 pc(s).	8617.700
500	4 pc(s).	8617.710
600	4 pc(s).	8617.720
800	4 pc(s).	8617.730



Support strip

For simple cable routing from the mounting plate to the door.

Installation options:

- On the inner and outer mounting level, on the enclosure section

Material:

- Carbon steel

Surface finish:

- Zinc-plated

Supply includes:

- Assembly parts

For enclosure width/depth mm	Length mm	Packs of	Model No.
400	340	20 pc(s).	4694.000
500	440	20 pc(s).	4695.000
600	540	20 pc(s).	4696.000



Interior Installation

Rail systems

C rail 30/15 to EN 60 715

Installation options:

- On the inner mounting level, on the enclosure section
- VX base/plinth system

Material:

- Carbon steel

Surface finish:

- Zinc-plated

For enclosure width/depth mm	Length mm	Packs of	Model No.
500	455	6 pc(s).	4943.000
600	555	6 pc(s).	4944.000
800	755	6 pc(s).	4945.000
1000	955	6 pc(s).	4946.000
1200	1155	6 pc(s).	4947.000



Support rail 75 x 20 mm

For heavy installed equipment such as base isolators or transformers.

Installation options:

- On the inner mounting level, on the enclosure section

Material:

- Carbon steel

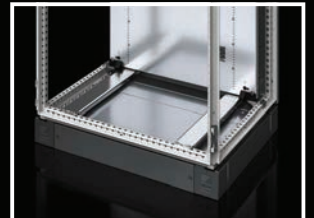
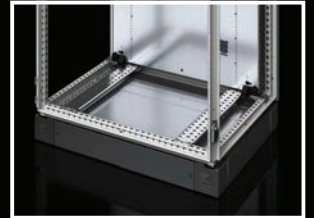
Surface finish:

- Zinc-plated

Supply includes:

- Assembly parts

For enclosure width/depth mm	Packs of	Model No.	Model No.
		Slotted	unslotted
400	4 pc(s).	4394.000	-
500	4 pc(s).	4395.000	-
600	4 pc(s).	4396.000	4396.500



Interior Installation

Assembly components



Multi-tooth screw

M6 x 12 to fit:

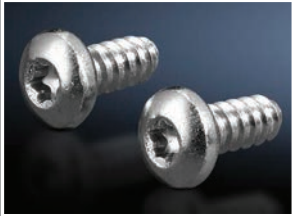
- Cage nuts 4164.500
- U nuts 4179.000
- Threaded blocks 4162.000

M8 x 12 to fit:

- Cage nuts 4165.500
- U nuts 4180.000
- Threaded blocks 4163.000

Metal multi-tooth screw

For the round holes \varnothing 4.5 mm or 4.7 mm in the enclosure section, punched rails, and punched sections without mounting flanges.



Self-tapping screw

For the round holes \varnothing 4.5 mm or 4.7 mm in the enclosure section, punched rails, and punched sections without mounting flanges.



Self-tapping screw

Mark, drill, and tighten in a single operation using electric or pneumatic tools.

For metal thickness: 0.8 – 3 mm
Length: 16 mm
Usable length: 9.5 mm
Width across flats: 8 mm



Multi-tooth drive for optimum transmission of torques, an extended tool life, and increased safety and reliability when tightening and loosening screw connections.

Type of screw	Dimensions mm	Packs of	Model No.
Multi-tooth screws	M6 x 12	300 pc(s).	2504.500
	M8 x 12	300 pc(s).	2504.800
Metal multi-tooth screws	5.5 x 13	300 pc(s).	2486.600
Metal multi-tooth screws for stainless steel	5 x 13	300 pc(s).	2486.400
Self-tapping screws (hex screws)	M5 x 10	500 pc(s).	2504.000
Self-tapping screws	ST 4.8 x 16	300 pc(s).	2487.000

Interior Installation

Assembly components

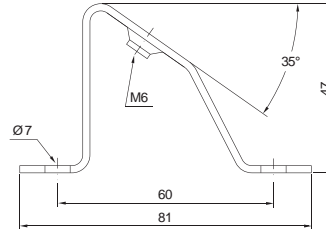
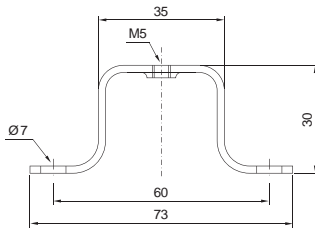
Rail mounting bracket

For individual mounting of rails at a distance from the mounting surface.

Material:

- Carbon steel, zinc-plated

Rail mounting bracket	Packs of	Model No.
Flat	20 pc(s).	2365.000
Inclined	20 pc(s).	2366.000



Cage nut

For all-round metric mounting on the enclosure section.

Benefits:

- For all-round mounting on the enclosure section
- The compression spring, designed as an insertion aid, ensures reliable mechanical and electrical connection in the system punchings.
- Simply slides in from the side
- Safely and easily released with a screwdriver

Installation options:

- On the vertical and horizontal enclosure section
- On punched sections with mounting flanges, 23 x 64 mm
- On punched sections with mounting flanges, 23 x 89 mm, stainless steel

Thread	Packs of	Model No.
M6	20 pc(s).	4164.500
M8	20 pc(s).	4165.500



Threaded block

For all-round metric mounting on the enclosure section. With snap-off insertion aid, made from die-cast zinc.

Installation options:

- On the vertical and horizontal enclosure section
- On punched sections with mounting flanges, 23 x 64 mm
- On punched sections with mounting flanges, 23 x 89 mm, stainless steel

Thread	Packs of	Model No.
M6	50 pc(s).	4162.000
M8	50 pc(s).	4163.000





Baying enclosure system VX25

Connection accessories

Benefits:

- Optimum illumination of the entire enclosure
- Optionally with clip, screw, or magnetic attachment
- Equipment to suit every application

Material:

- Plastic
- Aluminium

Color:

- Enclosure: RAL 7016

Light color:

- 4000 K (neutral white)

Supply includes:

- Assembly screws

Protection class:

- II (all-insulated)

Note:

- Connection accessories should be ordered separately
- Further information on country-specific versions can be found on the Internet
- Other system lights, e.g. with a lower luminosity and for compact enclosures, can be found on the Internet

Model No.		2500.310	2500.300	2500.210	2500.200	2500.220
Output (lumens)		1200	1200	900	900	900
Length (mm)		437	437	437	437	437
Motion sensor		■	■	–	–	–
Rated operating voltage	100 – 240 V AC	■	■	■	■	–
	24 V DC	–	–	–	–	■
Equipment	Socket D, earthing-pin	■	–	■	–	–
	90° rotating connector	■	■	■	■	■
	Adjustable light direction	■	■	–	–	–
	Adjustable light distribution	■	■	■	■	■
Approvals	UL	–	■	–	■	■
	CSA	–	■	–	■	■
	cUL	–	■	–	■	■
	CCC	–	■	–	■	–
	ENEC	■	■	■	■	■
Installation type	Screw-fastening	■	■	■	■	■
	Clip attachment	■	■	■	■	■
	Magnetic attachment to surfaces (accessory)	–	■	–	■	■
Connection options	Infeed	3-pole	3-pole	3-pole	3-pole	2-pole
	Through-wiring	3-pole	3-pole	3-pole	3-pole	2-pole
	Door-operated switch (accessory)	–	–	–	–	–
Accessories						
Mounting kit magnet		–	2500.490	–	2500.490	2500.490
Door-operated switch		–	–	2500.460	2500.460	2500.460
Door-operated switch, UL		–	–	–	2500.470	2500.470
Also required: Connection accessories depending on application type						
Infeed, 2-pole, UL		–	–	–	–	2500.410
Infeed, 3-pole		2500.400	2500.400	2500.400	2500.400	–
Infeed, 3-pole, UL		–	2500.500	–	2500.500	–
Through-wiring, 2-pole, UL		–	–	–	–	2500.440
Through-wiring, 3-pole		2500.430	2500.430	2500.430	2500.430	–
Through-wiring, 3-pole, UL		–	2500.530	–	2500.530	–

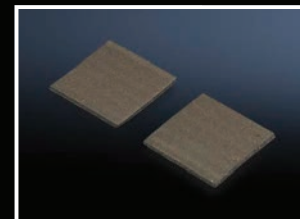
Interior Installation

LED system light

Mounting kit magnet for LED system light

For sticking onto the rear of lights without a socket.

Packs of	Model No.
2 pc(s).	2500.490



Socket box

for LED system light

In combination with the LED system light, the socket box creates a flexible modular system for international use.

Benefits:

- Same connection accessories as for LED system light
- Cascadable with LED system light
- Supports flexible installation throughout the entire enclosure and on the tubular door frame
- No additional wiring required, thanks to simple connection technology and integration of the LED system light into the circuit

Material:

- Plastic

Color:

- RAL 7016

Supply includes:

- Assembly parts

Configuration examples:

Socket	UL	Packs of	Model No.
	-	1 pc(s).	2500.710
	-	1 pc(s).	2500.711
	-	1 pc(s).	2500.712
	-	1 pc(s).	2500.713
	■	1 pc(s).	2500.714
	-	1 pc(s).	2500.715



Also required:

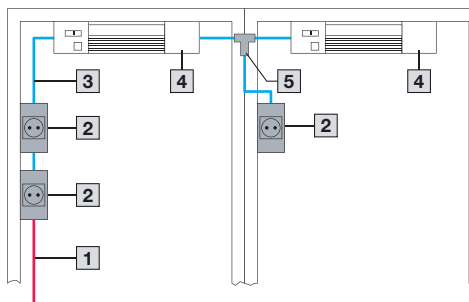
- Depending on the application, through-wiring or a 3-pole infeed may be required, see page 30



Accessories:

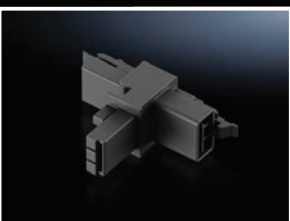
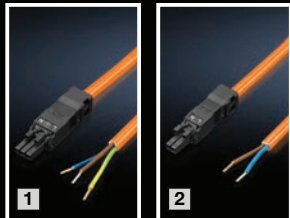
- T distributor, see page 30
- Through-wiring, 3-pole, see page 30
- Infeed, 3-pole, see page 30

- 1 Infeed
- 2 Socket box
- 3 Through-wiring
- 4 LED system light
- 5 T distributor



Interior Installation

LED system light



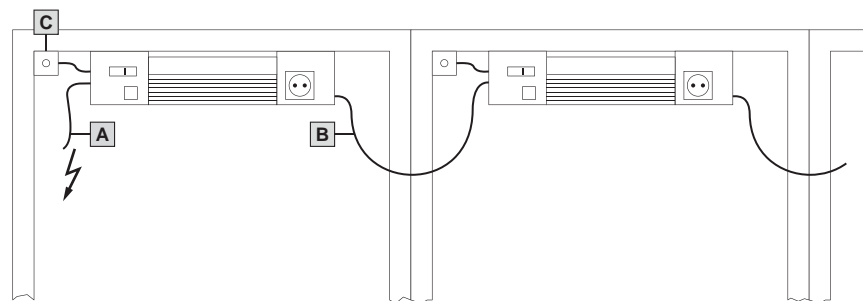
Connection accessories

for LED system light

The following components can be used for time-saving, easy installation of the lights:

	Connection cable for	ENEC	UL	Length mm	Packs of	Model No.	
						orange	black
1	Infeed, 3-pole, 100 – 240 V AC	■	■	3000	1 pc(s).	2500.500	–
	Infeed, 3-pole, 100 – 240 V AC	■	–	3000	5 pc(s).	2500.400	–
2	Infeed, 2-pole, 100 – 240 V AC	■	–	3000	5 pc(s).	2500.420	–
	Infeed, 2-pole, 24 V DC	■	■	3000	5 pc(s).	–	2500.410
4	Through-wiring, 3-pole, 100 – 240 V AC	■	–	200	1 pc(s).	2500.435	–
	Through-wiring, 3-pole, 100 – 240 V AC	■	■	1000	1 pc(s).	2500.530	–
	Through-wiring, 3-pole, 100 – 240 V AC	■	–	1000	5 pc(s).	2500.430	–
5	Through-wiring, 2-pole, 100 – 240 V AC	■	–	1000	5 pc(s).	2500.450	–
	Through-wiring, 2-pole, 24 V DC	■	■	1000	5 pc(s).	–	2500.440

- A** Connection cable for infeed
- B** Connection cable for through-wiring
- C** Door-operated switch with connection cable (not required for LED system light with integral motion sensor)



T distributor

with two sockets and one connector

For creating safe, shock-hazard-protected junctions when wiring LED system lights and socket boxes.

Packs of	Model No.
5 pc(s).	2500.680

Door-operated switch

for LED system light

Supply includes:

- Assembly parts

Protection category:

- IP 40

	ENEC	UL	Length mm	To fit	Packs of	Model No.
						black
Connection cable	■	–	800	230 V AC/24 V DC, 1 A	1 pc(s).	2500.460
	–	■	800			2500.470

Cable clamp

for C rail

For attaching cables to the C rail.

Material:

- Carbon steel

Surface finish:

- Zinc-plated

Supply includes:

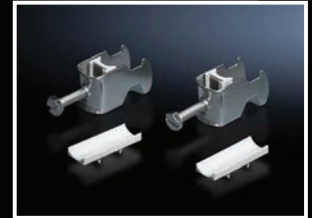
- Plastic insert

For cable diameter mm	Packs of	Model No.
6 – 14	25 pc(s).	7077.000
12 – 18	25 pc(s).	7078.000
18 – 22	25 pc(s).	7097.000
22 – 26	25 pc(s).	7097.220
26 – 30	25 pc(s).	7097.260
30 – 34	25 pc(s).	7097.300
34 – 38	25 pc(s).	7097.340
38 – 42	25 pc(s).	7098.000
42 – 56	25 pc(s).	7098.100
56 – 64	25 pc(s).	7099.000



Accessories:

- C rail, see from page 27



Cable conduit and cable conduit holder

For secure cable routing e.g. from the enclosure or mounting plate to the door. An attachment facility for standard commercially available cable ties is provided on the cable conduit holder, so that cables may be attached upon entry to/exit from the cable conduit.

Material:

- Cable conduit: Polyethylene
- Cable conduit holder: Polyamide

Cable conduit

Internal Ø mm	Packs of	Model No.
16	25 m	2595.000
29	25 m	2589.000
36	25 m	2596.000
48	25 m	2590.000

Cable conduit holder

For cable conduit Ø mm	Packs of	Model No.
16	20 pc(s).	2593.000
29	20 pc(s).	2591.000
36	20 pc(s).	2594.000
48	20 pc(s).	2592.000

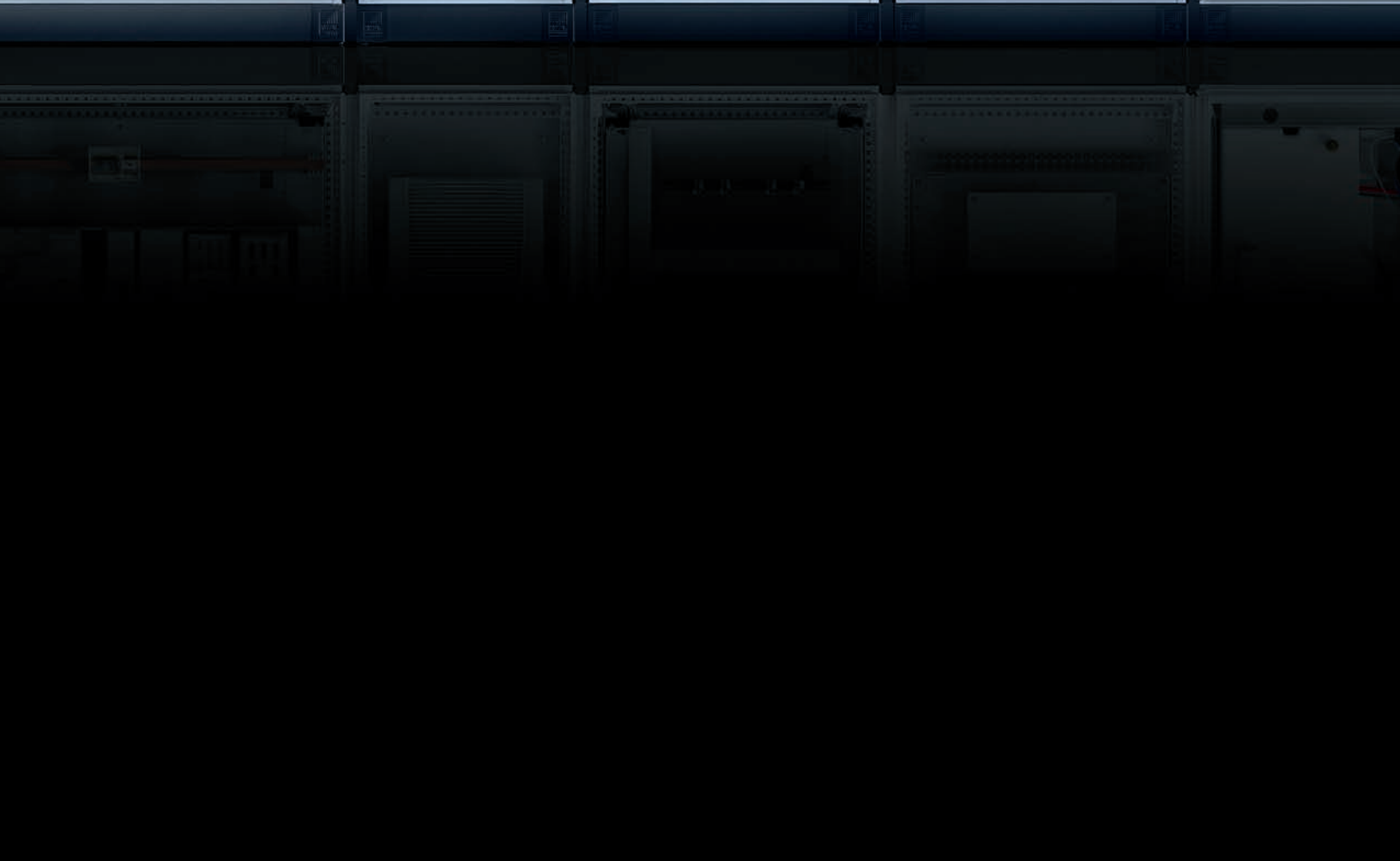


Cable tie

The super-fast solution for fastening cables to the enclosure profile or mounting system parts. Simply clip into the round system punchings.

Length mm	Packs of	Model No.
150	100 pc(s).	2597.000







One for all. Especially for you! “Rittal – The System.”

With tailor-made products, modern IT architectures and comprehensive service, Rittal offers individual solutions for every industry – for improved efficiency, greater added value, and more security.

Rittal – The System.

Faster – better – everywhere.

- Enclosures
- Power Distribution
- Climate Control
- IT Infrastructure
- Software & Services

You can find the contact details of all Rittal companies throughout the world here.



www.rittal.com/contact

ENCLOSURES

POWER DISTRIBUTION

CLIMATE CONTROL

IT INFRASTRUCTURE

SOFTWARE & SERVICES



FRIEDHELM LOH GROUP