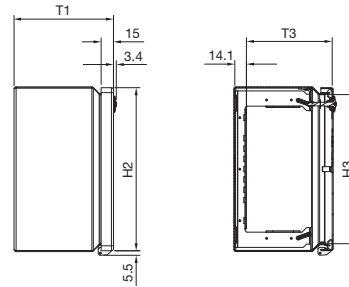
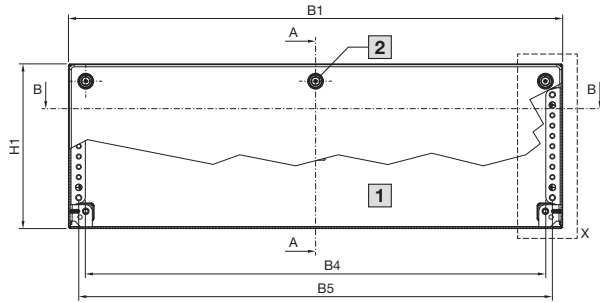


Small enclosures

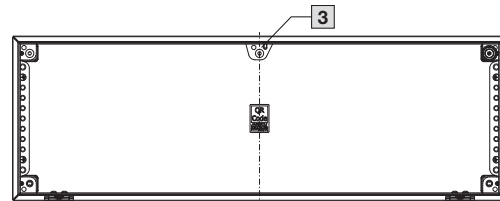
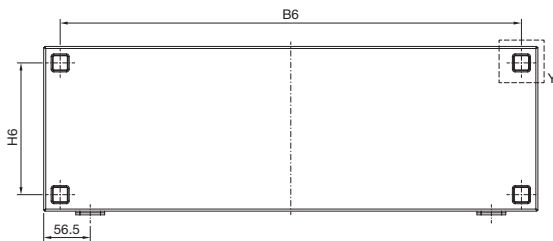
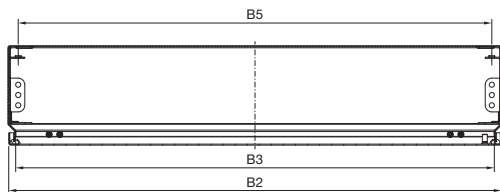
Small enclosures KX, stainless steel

Bus enclosure KX

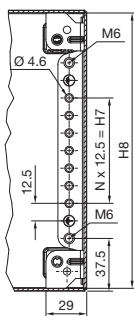
Section A – A



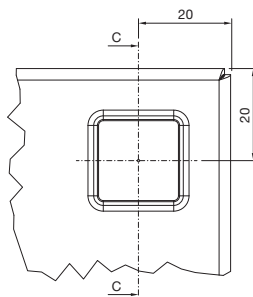
Section B – B



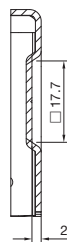
Detail X



Detail Y



Section C – C



Schrank

- B1 = Enclosure width (overall width)
- B2 = Cover width
- B3 = Clearance width, enclosure opening
- B4 = Clearance width between profile strips
- B5 = Distance between axes of the mounting holes in the profile strips
- B6 = Mounting distance, enclosures
- H1 = Enclosure height (overall height)
- H2 = Cover height
- H3 = Clearance height, enclosure opening
- H6 = Mounting distance, enclosures
- H7 = Overall height, 25 mm pitch pattern of holes
- H8 = Clearance of profile strips
- T1 = Overall depth
- T3 = Installation depth (distance from inside of cover to profile strip)
- N = No. of 25 mm pitch patterns of holes

- 1 Internal view
- 2 Only for KX 1586.000
- 3 Mounting bracket only with W > 500

Model No. KX	Width dimensions mm						Height dimensions mm						Depth dimensions mm		N
	B1	B2	B3	B4	B5	B6	H1	H2	H3	H6	H7	H8	T1	T3	
1585.000	400	398	381.1	359.5	375	360	200	198	181.1	160	75	196	120.7	104.1	6
1586.000	600	598	581.1	559.5	575	560	200	198	181.1	160	75	196	120.7	104.1	6