

Rittal – The System.

Faster – better – everywhere.

Divided gland plate

For inserting up to three pre-assembled cables with a maximum \varnothing of 18 mm into an enclosure.



ENCLOSURES

POWER DISTRIBUTION

CLIMATE CONTROL

IT INFRASTRUCTURE

SOFTWARE & SERVICES



FRIEDHELM LOH GROUP

Specification



Divided gland plate for inserting an object with dimensions of up to 215 x 300 mm through an enclosure panel and subsequent sealing of up to three cables with a maximum diameter of 18 mm.

With proper assembly, protection category IP 54 to IEC 60 529 is achieved.

Material:

- Gland plate: Sheet steel, 2.0 mm
- Membrane grommets: Rubber
- Seal: PU foam

Colour:

- RAL 7035

Protection category:

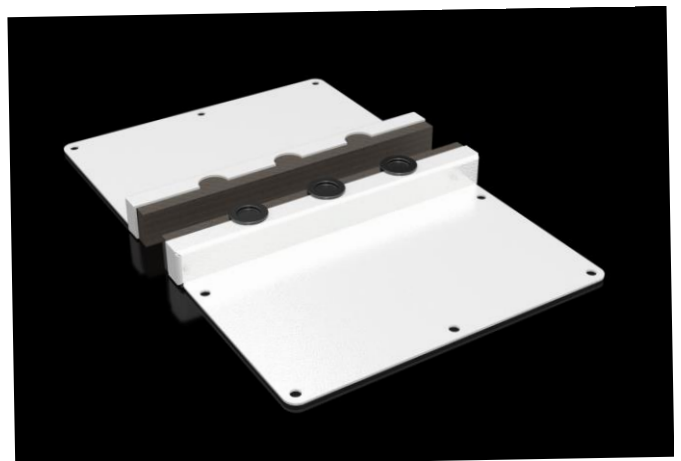
- IP 54 to IEC 60 529

The divided gland plate is comprised of the following components:

- 2 gland plates to close the opening
- 3 membrane grommets for sealing one or more cables
- Sealing block made of PU foam for the protrusion
- Assembly parts

Dimensions:

- External dimensions: 280 mm x 356 mm
- Clearance opening: 215 mm x 300 mm
- Installation depth: 32 mm
- Diameter of membrane Grommets: 25 mm
- Max. cable diameter: 18 mm



Model No.	7993.450
Packs of	1 pc(s).

Rittal – The System.

Faster – better – everywhere.

- Enclosures
- Power Distribution
- Climate Control
- IT Infrastructure
- Software & Services

Contacts

Solution Sales Management:

Achim Geese

Phone: +49 (0) 2772 505 1885

Fax : +49(0)2772 50570012

Email: geese.a@rittal.de

Technical Back Office:

Gunther Blöcher

Phone: +49 (0) 2772 505 2263

Fax : +49(0)2772 50570012

Email: bloecher.g@rittal.de

You can find the contact details of all
Rittal companies throughout the world here.



www.rittal.com/contact

ENCLOSURES

POWER DISTRIBUTION

CLIMATE CONTROL

IT INFRASTRUCTURE

SOFTWARE & SERVICES

FRIEDHELM LOH GROUP

