

Blue e+ fan-and-filter unit

Blue e+ EMC fan-and-filter units

- For superior EMC shielding/attenuation
- Durable copper-nickel-chrome plated filter housing and filter mat
- Identical filter class to standard filters
- Chopped fibre mat with progressive structure and copper-nickel-chrome plating

Caution: Shielding/attenuation is only guaranteed if using the original EMC filter mat!

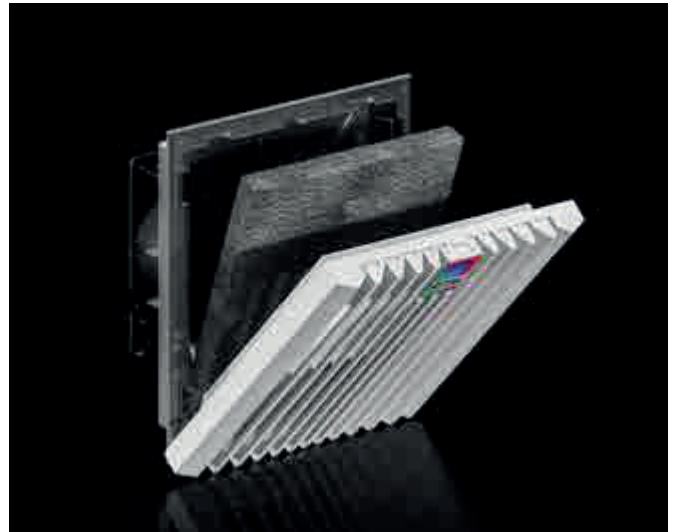
Applied test standard:

EN 61587-3:2013

Shielding attenuation tests for enclosures, racks and subracks

This part of EN 61587 defines the testing of shielding attenuation with empty enclosures and subracks within the frequency range from 30 MHz to 2000 MHz.

The purpose of this standard is to ensure the physical intactness and environmental behaviour of enclosures while allowing for differing requirement levels in different applications.



Attenuation levels to EN 61587-3:2013

Requirement level	Frequency range	Frequency range
	230 MHz to 1000 MHz	1000 MHz to 2000 MHz
1	10 dB	0
2	30 dB	20 dB
3	50 dB	40 dB

Electromagnetic shielding to IEC 61000-5-7

Requirement level 1 for EM code is: EMxxx210x

Requirement level 2 for EM code is: EMxxx430x

Requirement level 3 for EM code is: EMxxx650x

Shielding/attenuation diagram (to EN 61587)

