

# Rittal – The System.

Faster – better – everywhere.

## CMC III Processing Unit / CMC III Processing Unit Compact



DK 7030.000  
DK 7030.010

## Assembly and operating instructions

ENCLOSURES

POWER DISTRIBUTION

CLIMATE CONTROL

IT INFRASTRUCTURE

SOFTWARE & SERVICES

FRIEDHELM LOH GROUP



## Foreword

Dear Customer!

We would like to thank you for choosing our CMC III Processing Unit / CMC III Processing Unit Compact (also referred to hereafter as "CMC III PU")!

We wish you every success!

Your,  
Rittal GmbH & Co. KG

Rittal GmbH & Co. KG  
Auf dem Stützelberg

35745 Herborn, Germany  
Germany

Tel.: +49(0)2772 505-0  
Fax: +49(0)2772 505-2319

E-mail: [info@rittal.de](mailto:info@rittal.de)  
[www.rittal.com](http://www.rittal.com)  
[www.rittal.de](http://www.rittal.de)

We are always happy to answer any technical questions regarding our entire range of products.

## Contents

<b>1</b>	<b>Notes on documentation</b>	<b>5</b>	<b>7.3</b>	<b>Telnet connection</b>	<b>17</b>
1.1	CE labelling	5	7.3.1	Establishing the connection	17
1.2	Storing the documents	5	7.3.2	Changing the network settings	18
1.3	Symbols in these operating instructions	5	7.4	USB/serial connection	18
1.4	Associated documents	5	7.4.1	Installing the driver	18
1.5	Area of validity	5	7.4.2	Determining the connection port	19
<b>2</b>	<b>Safety instructions</b>	<b>6</b>	7.4.3	Establishing the connection	19
2.1	General safety instructions	6	7.4.4	Changing the network settings	20
2.2	Operating and technical staff	6	7.5	Basic settings	20
<b>3</b>	<b>Product description</b>	<b>7</b>	7.5.1	Login to the CMC III PU	20
3.1	Function description and components	7	7.5.2	Menu structure	21
3.1.1	Function	7	7.5.3	Navigating in the menu structure	21
3.1.2	Components	7	7.5.4	Input of values	22
3.2	Proper use, anticipated misuse	7	7.5.5	Special settings and notes	22
3.3	Scope of supply	7	7.5.6	Performing switch commands	22
<b>4</b>	<b>Transportation and handling</b>	<b>8</b>	7.5.7	Logout from the CMC III PU	23
4.1	Transportation	8	<b>8</b>	<b>Operation</b>	<b>24</b>
4.2	Unpacking	8	8.1	General	24
<b>5</b>	<b>Installation</b>	<b>9</b>	8.2	General operation	24
5.1	Safety notes	9	8.2.1	Screen structure	24
5.2	Requirements placed on the installation location	9	8.2.2	Navigation area in the left-hand area	24
5.3	Installation procedure	9	8.2.3	Tabs in the configuration area	24
5.3.1	Installation notes	9	8.2.4	Message display	25
5.3.2	Installation with the mounting clips provided	10	8.2.5	Other displays	25
5.3.3	Installation with the CMC III mounting unit	10	8.2.6	Changing parameter values	26
5.3.4	Top-hat rail mounting	11	8.2.7	Undock function	27
5.4	Electrical connection	11	8.2.8	Logout and changing the password	28
5.4.1	Connection using an external power pack	12	8.2.9	Reorganising the connected components	28
5.4.2	Direct connection	12	8.3	Observation tab	29
5.4.3	Power over Ethernet (PoE)	12	8.3.1	Device	29
5.5	Connection of the external temperature sensor (optional)	12	8.3.2	Temperature	29
5.6	Network connection	13	8.3.3	Door (Access)	29
5.7	Connection of sensors	13	8.3.4	Input_1 or Input_2	30
5.8	Connection of an alarm relay	13	8.3.5	Alarm Relay (Output)	30
5.9	Digital inputs	13	8.3.6	System	30
<b>6</b>	<b>Commissioning</b>	<b>14</b>	8.3.7	Memory	32
6.1	Switching on the CMC III PU	14	8.3.8	Webcam	33
6.2	Operating and display elements	14	8.4	Configuration tab	33
6.3	Displays of the LEDs	14	8.5	Network	34
6.3.1	Multi-LED displays	14	8.5.1	TCP/IP Configuration	34
6.3.2	Displays of the LEDs on the CAN bus connection	14	8.5.2	SNMP Configuration	35
6.3.3	Displays of the LEDs on the Ethernet interface	14	8.5.3	HTTP Configuration	36
6.4	Acknowledgement of messages	15	8.5.4	File Transfer Configuration	36
<b>7</b>	<b>Configuration</b>	<b>16</b>	8.5.5	Console	36
7.1	General	16	8.5.6	SMTP Configuration	37
7.2	HTTP connection	16	8.5.7	SMS Configuration	37
7.2.1	Establishing the connection	16	8.5.8	Modbus/TCP Configuration	38
7.2.2	Changing the network settings	16	8.5.9	Server Shutdown Configuration	38
7.2.3	Configuration	17	8.5.10	OPC-UA Configuration	39
			8.6	System	39
			8.6.1	Syslog	39
			8.6.2	Units and Languages	39
			8.6.3	Details	39
			8.6.4	Date/Time	40
			8.6.5	General	40
			8.6.6	Firmware update	40
			8.6.7	WebCam	41
			8.6.8	Display	41

# Contents

EN

8.7	Security .....	41	11	Technical specifications .....	64
8.7.1	Groups .....	41	12	Accessories .....	66
8.7.2	Users .....	42	13	Glossary .....	67
8.7.3	Access Configuration .....	42	14	Customer service addresses .....	68
8.7.4	LDAP Configuration .....	42			
8.7.5	Radius Configuration .....	43			
8.8	Device Rights .....	44			
8.8.1	Inheritance of the Device Rights .....	45			
8.8.2	Data types .....	45			
8.9	Alarm Configuration .....	45			
8.9.1	Notifications .....	46			
8.9.2	Email Receivers .....	46			
8.9.3	Trap Receivers .....	46			
8.9.4	SMS Receivers .....	46			
8.9.5	Alarm simulation .....	47			
8.10	Inputs and Outputs .....	47			
8.11	Logging .....	47			
8.11.1	Defining a filter .....	48			
8.11.2	Refreshing the view .....	48			
8.11.3	Printing the view .....	48			
8.11.4	Delete the display .....	49			
8.12	Tasks .....	49			
8.12.1	Tasks tab .....	49			
8.12.2	Specifying the trigger expression .....	49			
8.12.3	Selection of an action .....	50			
8.12.4	Example for creating a task .....	51			
8.12.5	Deactivating or deleting a task .....	51			
8.13	Virtual Devices .....	51			
8.13.1	Types of virtual devices .....	52			
8.13.2	Creating a virtual device .....	52			
8.13.3	Configuring a virtual device .....	52			
8.13.4	Deleting a virtual device .....	53			
8.14	Charts .....	53			
8.14.1	Configuring a chart .....	54			
8.14.2	Chart view .....	55			
8.14.3	Evaluating the CSV files .....	55			
8.15	Dashboards .....	56			
8.15.1	Basic settings .....	56			
8.15.2	Configuring a dashboard .....	57			
8.15.3	Saving a dashboard .....	59			
8.15.4	Calling a dashboard .....	59			
8.15.5	Calling the website via a mobile terminal .....	59			
8.15.6	Exiting a dashboard .....	59			
9	Updates and data backup .....	60			
9.1	Establishing an FTP connection .....	60			
9.2	Perform an update .....	60			
9.2.1	Notes for performing an update .....	60			
9.2.2	Downloading the software update .....	60			
9.2.3	Update via USB .....	60			
9.2.4	Update via FTP or SFTP .....	61			
9.2.5	Perform the update .....	61			
9.3	Performing a data backup .....	61			
9.4	Local saving of supplementary information .....	62			
10	Storage and disposal .....	63			
10.1	Storage .....	63			
10.2	Disposal .....	63			

## 1 Notes on documentation

### 1.1 CE labelling

Rittal GmbH & Co. KG confirms the conformance of the CMC III Processing Unit and the CMC III Processing Unit Compact to the EU EMC regulation 2014/30/EU. An appropriate declaration of conformity has been prepared which can be supplied if required.



### 1.2 Storing the documents

The operating, installation and maintenance instructions as well as all applicable documents are an integral part of the product. They must be handed to those persons who work with the unit and must always be available and on hand for the operating and maintenance personnel.

### 1.3 Symbols in these operating instructions

The following symbols are found in this documentation:



**Danger!**

**Hazardous situation which causes death or serious injury if the instructions are not followed.**



**Warning!**

**Hazardous situation which may lead to death or serious injury if the instructions are not followed.**



**Caution!**

**Hazardous situation which may lead to (minor) injuries if the instructions are not followed.**



**Note:**

Identification of the situations that can lead to material damage.

- This symbol indicates an "Action Point" and shows that you should perform an operation/procedure.

### 1.4 Associated documents

– Installation and Short User's Guide

### 1.5 Area of validity

This guide applies to software version V3.15.20.

This documentation uses English screenshots exclusively. The English terms are also used in the descriptions for the individual parameters on the CMC III PU website. Depending on the set language, the displays on the CMC III PU website may deviate (see section 8.6.2 "Units and Languages")

### 2 Safety instructions

#### 2.1 General safety instructions

Please observe the following general safety instructions for the installation and operation of the system:

- Assembly and installation of the CMC III PU, especially wiring with mains power, may only be performed by a trained electrician.
- Please observe the valid regulations for the electrical installation for the country in which the CMC III PU is installed and operated, and the national regulations for accident prevention. Please also observe any internal company regulations, such as work, operating and safety regulations.
- Use only original Rittal products or products recommended by Rittal in conjunction with the CMC III PU.
- Please do not make any changes to the CMC III PU that are not described in this manual or in the associated assembly and operating instructions.
- The operational safety of the CMC III PU is guaranteed only for the intended use. The technical data and limit values stated in the technical specifications may not be exceeded under any circumstances. In particular, this applies to the specified ambient temperature range and IP degree of protection.
- The CMC III PU must not be opened. The unit does not contain any parts that need servicing.
- Operating of the system in direct contact with water, aggressive materials or inflammable gases and vapours is prohibited.
- The CMC III PU must be disconnected from the mains when it is connected with other units.
- Other than these general safety instructions, ensure you also observe the specific safety instructions when carrying out the tasks described in the following chapters.

#### 2.2 Operating and technical staff

- The assembly, commissioning, maintenance and repair of this unit may be performed only by qualified personnel.
- Only properly instructed personnel may work on a unit while in operation.

## 3 Product description

### 3.1 Function description and components

#### 3.1.1 Function

The CMC III PU is the core product of the Rittal enclosure monitoring and control system for the electronic monitoring of enclosures and server racks. It provides an Ethernet LAN interface in conjunction with a website for user communication. In addition to the integrated sensors, the CAN bus interface allows a wide range of sensors, actuators and systems for access monitoring to be connected. All sensors initialise themselves automatically after connection to the CAN bus system.

Two redundant 24 V  $\overline{\text{---}}$  connections are provided to supply power. The system can also be supplied with Power over Ethernet. In this case, the bus cables then supply power to the connected CAN bus sensors.

#### 3.1.2 Components

The device consists of a compact plastic housing in RAL 7035 with ventilated front in RAL 9005.

### 3.2 Proper use, anticipated misuse

The device is used only as an enclosure monitoring system and for the administration of the various enclosure parameters. Any other use is not permitted.

Rittal must be contacted before using a sensor connected outside of an enclosure.

The unit is state of the art and built according to recognised safety regulations. Nevertheless, improper use can present a hazard to life and limb of the user or third parties, or result in possible impairment of the system and other property.

The unit should thus only be used properly and in technically sound condition. Any malfunctions which impair safety should be rectified immediately! Follow the operating instructions!

The intended use also includes following the accompanying documentation as well as fulfilling the inspection and maintenance conditions.

Rittal GmbH & Co. KG is not responsible for any damage which may result from failure to comply with the accompanying documentation. This also applies to failure to comply with the valid documentation for the accessories used.

Inappropriate use may result in danger. Inappropriate use may include:

- Use of impermissible tools.
- Improper use.
- Improper rectification of malfunctions.
- Use of accessories not authorised by Rittal GmbH & Co. KG.

### 3.3 Scope of supply

- CMC III Processing Unit or CMC III Processing Unit Compact
- Accessories provided (fig. 1)
- Installation and Short User's Guide

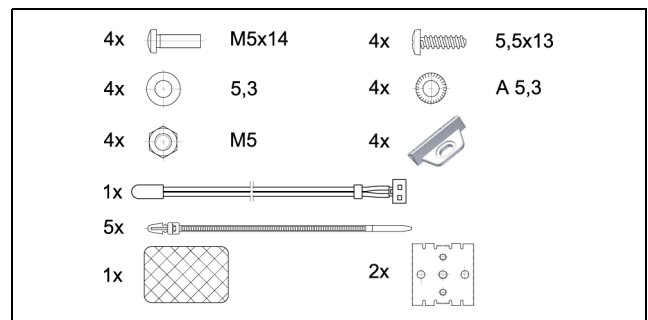


Fig. 1: Accompanying accessories

# 4 Transportation and handling

EN

## 4 Transportation and handling

### 4.1 Transportation

The device is supplied in a carton.

### 4.2 Unpacking

- Remove the unit's packaging materials.



Note:

After unpacking, the packaging materials must be disposed of in an environmentally friendly way. It consists of the following materials:

Polyethylene film (PE film), cardboard.

- Check the unit for any damage that occurred during transport.



Note:

Damage and other faults, e.g. incomplete delivery, should immediately be reported to the shipping company and to Rittal GmbH & Co. KG in writing.

- Remove the device from the PE film.
- Remove the protective film from the front cover of the device.



## 5 Installation

### 5.1 Safety notes



#### Warning!

**Work on electrical systems or equipment may only be carried out by an electrician or by trained personnel guided and supervised by an electrician. All work must be carried out in accordance with electrical engineering regulations.**

**The unit may only be connected after the above-named personnel have read this information!**

**Use insulated tools.**

**The connection regulations of the appropriate power company must be followed.**

**The unit is free from power only after all power sources have been disconnected!**

- Please observe the valid regulations for the electrical installation for the country in which the CMC III PU is installed and operated, and the national regulations for accident prevention. Please also observe any company-internal regulations, such as work, operating and safety regulations.
- The technical data and limit values stated in the technical specifications must not be exceeded under any circumstances. In particular, this applies to the specified ambient temperature range and the IP category.
- If a higher IP degree of protection is required for a special application, the CMC III PU must be installed in an appropriate housing or enclosure with the required IP category.

### 5.2 Requirements placed on the installation location

To ensure the correct operation of the device, the conditions for the installation location described in section 11 "Technical specifications" must be observed.

#### Electromagnetic interference

- Interfering electrical installations (high frequency) should be avoided.

### 5.3 Installation procedure



#### Recommendations:

We recommend that the network settings are changed before the device is installed (see section 7 "Configuration").

In general, there are several ways of installing the CMC III PU in an IT server enclosure:

1. Installation using the mounting clips provided, possibly also with spring clips for the top-hat rail installation
2. Installation with the CMC III mounting unit (DK 7030.071)
3. Installation with the CMC III mounting unit, 1 U (DK 7030.070)

#### 5.3.1 Installation notes

- Never fasten the CMC III PU with the mounting clips provided only on one side of the device! This would cause undesirable vibrations in the device during running operation.

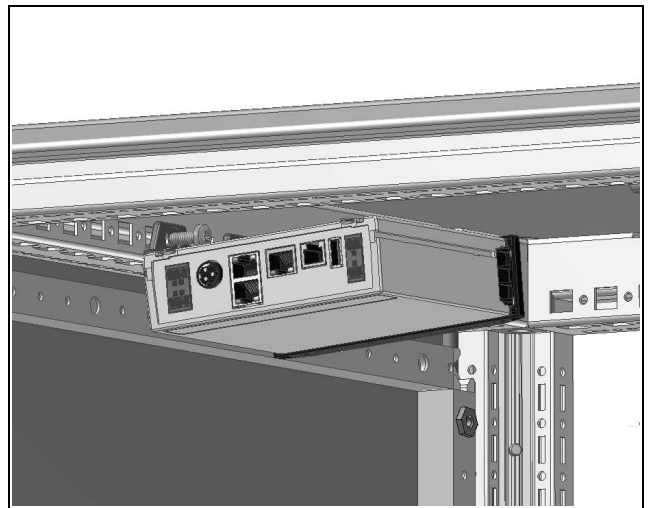


Fig. 2: Faulty installation in the enclosure

- To permit the exact temperature measurement with the internal temperature sensor, an adequate air circulation in the enclosure or IT enclosure must be provided and the CMC III PU located so that it is adequately supplied with air and the vent slots not covered. If this is not possible, the external temperature sensor (optional) can be used instead of the internal temperature sensor.
- If the access sensor for monitoring a door or side panel of an IT enclosure is used, the CMC III PU must be positioned so that the sensor points to the lock side and not to the hinge side of the door to be monitored. Because the angle of the reflecting foil changes faster, an opened door will be detected faster.
- After completion of the installation, glue the reflecting foil supplied on to the door or side panel exactly opposite the infrared access sensor.

## 5 Installation

EN

- Ensure observance of the minimum and maximum clearances between the sensor and the reflecting foil that depend on the set value for "sensitivity" specified in the following table.

Sensitivity	min. clearance [mm]	max. clearance [mm]
1	20	85
2	20	140
3	20	160

Tab. 1: Minimum and maximum clearances



Note:

In the delivered state, the sensitivity is preset to the value "2".

### 5.3.2 Installation with the mounting clips provided

Installation with the mounting clips provided in the scope of supply is best done on a mounting plate or on a top-hat rail with the help of the spring clips provided (see section 5.3.4 "Top-hat rail mounting").

- Push two mounting clips on to each of the side guide rails of the CMC III PU.

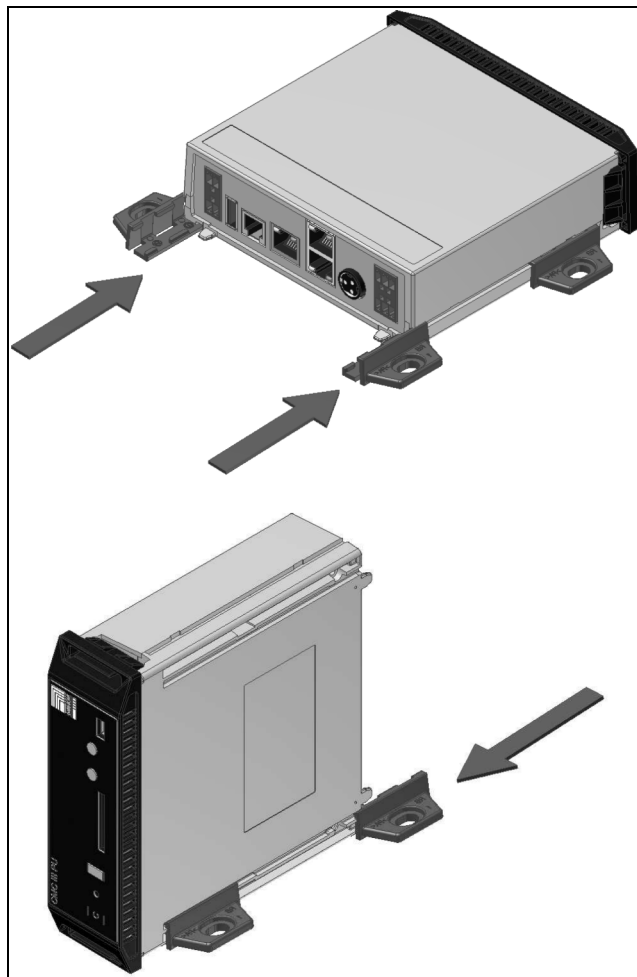


Fig. 3: Sliding on the mounting clips

- Fasten the CMC III PU with the screws provided in the scope of supply, e.g. on a mounting plate in the IT server enclosure.

### 5.3.3 Installation with the CMC III mounting unit

The CMC III mounting unit is available in two variants:

- For installation of the CMC III PU on the enclosure frame or on a mounting plate (DK 7030.071).
- As 482.6 mm (19") variant (1 U) for acceptance of the CMC III PU and two further devices (DK 7030.070).

The installation of the CMC III PU in the two mounting units is identical:

- Push the CMC III PU as far as possible into the mounting unit until it latches.

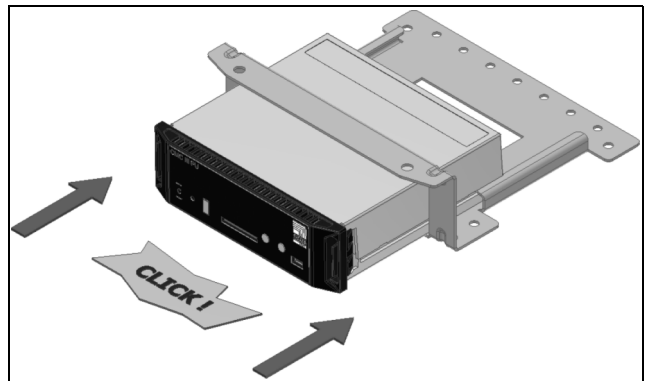


Fig. 4: Sliding the CMC III PU into the mounting unit.

- Fasten the mounting unit (DK 7030.071) with the screws provided to the enclosure frame or to a mounting plate.

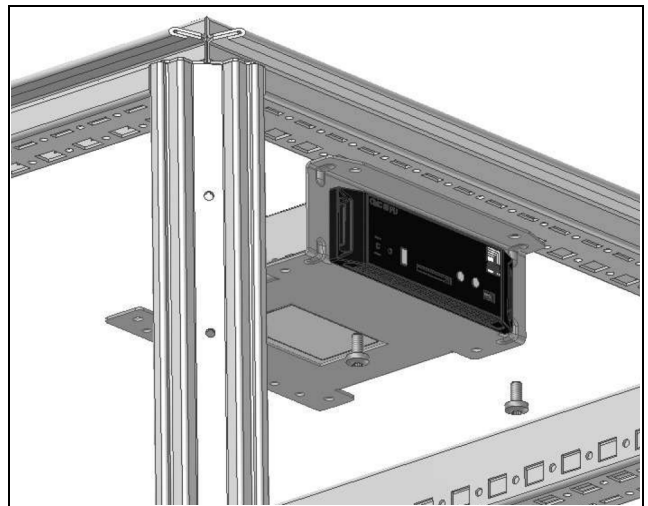


Fig. 5: Fastening the mounting unit to the enclosure frame

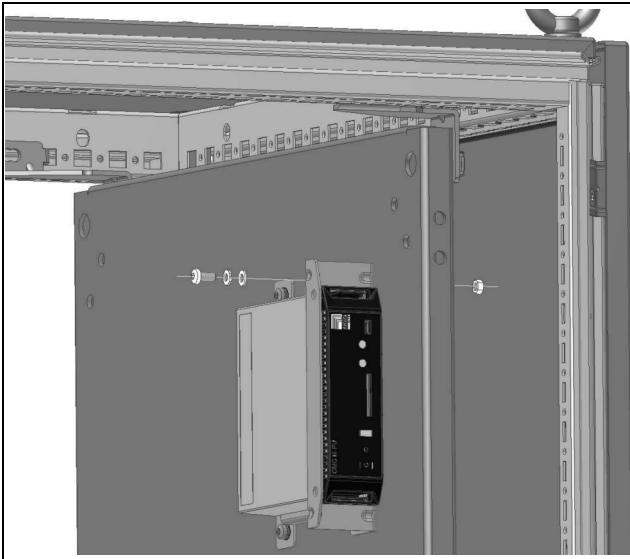


Fig. 6: Fastening the mounting unit to a mounting plate

- Fasten the mounting unit (DK 7030.070) with the screws provided in a free rack-mounting point (1 U) of the IT server enclosure.

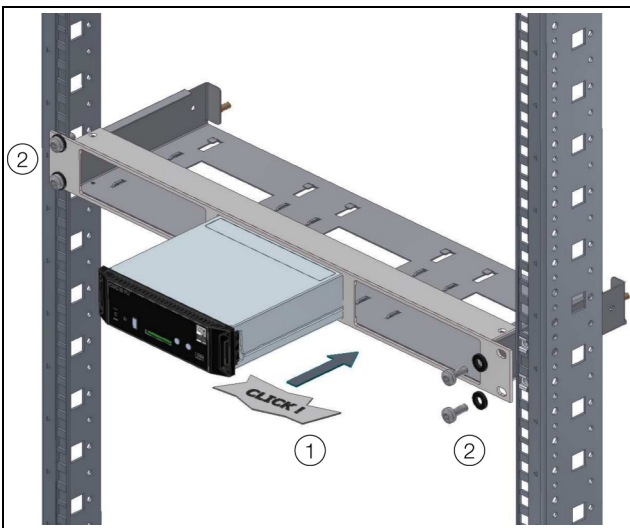


Fig. 7: Fastening the mounting unit in a rack-mounting point

## 5.3.4 Top-hat rail mounting

Top-hat rail mounting is performed using the mounting clips provided and the spring clips.

- Push a mounting clip on to each of the side guide rails of the CMC III PU.
- Screw a spring clip for the top-hat rail installation on each of the mounting clips.
- Place the CMC III PU with the spring clips on the top-hat rail.

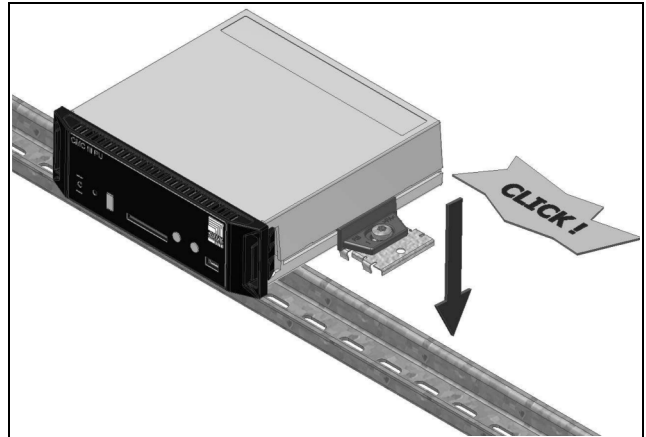


Fig. 8: Top-hat rail installation of the CMC III PU

## 5.4 Electrical connection



### Warning!

**The unit is free from power only after all power sources have been disconnected!**

In general, there are several ways of supplying the CMC III PU with the required operational power:

1. External power supply (DK 7030.060)
2. Direct 24 V connection
3. Power over Ethernet (PoE)

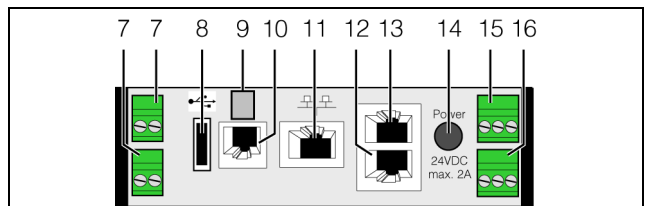


Fig. 9: Rear of the CMC III PU

### Legend

- 7 Digital inputs (two), per 24 V  $\overline{\text{---}}$ , 10 mA
- 8 USB master connection (not for the "Compact" variant)
- 9 Connection of an external temperature sensor (optional)
- 10 Connection for display, GSM or ISDN unit module, RJ 12 / RS 232, 24 V  $\overline{\text{---}}$ , 500 mA
- 11 Ethernet interface, RJ 45 with PoE
- 12 CAN bus connection (daisy chain) for CMC III sensors and CMC III control units, 24 V  $\overline{\text{---}}$ , 1 A
- 13 Second CAN bus connection (not for the "Compact" variant), 24 V  $\overline{\text{---}}$ , 1 A
- 14 24 V  $\overline{\text{---}}$  power supply (power pack connection)
- 15 24 V  $\overline{\text{---}}$  power supply (direct connection)
- 16 Alarm relay output (floating contact, max. 24 V  $\overline{\text{---}}$ , 1 A)



### Note:

The voltage sources at positions 7, 10, 12, 13 and 16 (fig. 9) must satisfy the Limited Power Source (LPS) requirements in accordance with UL 60950 and observe the limit values mentioned above.

# 5 Installation

EN

The F5 fuse is also installed in CMC III PU which has the following specification:

- 250 V  $\text{---}$ , 3.15 A, slow fuse, type 02133.15MXP Littelfuse.

## 5.4.1 Connection using an external power pack

- Connect the external power pack (DK 7030.060) to the CMC III PU power supply (fig. 9, item 14).
- Select the appropriate country-specific connection cable for the power pack.
- Connect the power pack with the connection cable to the power supply.



Note:

Further notes are contained in the power pack documentation (DK 7030.060).



Note:

The power supply to the CMC III PU must not be disconnected while it is booting.

The start of the CMC III PU takes approx. 1 minute. The status display flashes irregularly during this time. An audio signal sounds once the device has started successfully. The device is then operational.

## 5.4.2 Direct connection

Alternatively, you can connect the CMC III PU directly to the external power pack using the terminal connector.

- To do this, connect the 24 V output (direct connection) on the power pack (DK 7030.060) to the appropriate connection of the CMC III PU (fig. 9, item 15).
- Observe the pin assignment of the connection.

Pin	Signal
Pin 1 (left)	GND
Pin 2 (centre)	+24 V
Pin 3 (right)	not assigned

Tab. 2: Pin assignment of the connection



Note:

The above designations "left", "centre" and "right" apply when the device is viewed from the rear (fig. 9).

- Also observe the pin assignment of the power pack (DK 7030.060). This is contained in the associated documentation.

## 5.4.3 Power over Ethernet (PoE)



Note:

- For PoE power supply, the CMC III PU may be operated only in closed rooms and in the enclosure.
- The PoE power supply must be laid entirely in closed rooms and is therefore not allowed, even partially, to be laid outdoors.

Instead of using an external power pack, you can also supply the CMC III PU with its operational power via Power over Ethernet.

- For example, connect a PoE switch to the Ethernet interface (fig. 9, item 11).



Note:

Ensure that the permitted total power consumption for the PoE port is not exceeded (refer to the documentation for the PoE switch).

## 5.5 Connection of the external temperature sensor (optional)



Note:

The external temperature sensor must be used when it cannot be guaranteed that the CMC III PU is adequately supplied with air or when the measuring point is present at a different position than the installation location of the CMC III PU.

- If required, insert the external temperature sensor at the rear on the connection of the CMC III PU (fig. 9, item 9).
- Then route the external temperature sensor to the required measuring point.



Note:

The internal temperature sensor will be disabled when the external temperature sensor is inserted.



Note:

The external temperature sensor must be connected before the CMC III PU is started. If the external temperature sensor is connected during running operations, the CMC III PU must be restarted so that the external temperature sensor is detected and used.

## 5.6 Network connection

The network connection establishes the connection to the network.

- Connect the Ethernet interface (fig. 9, item 11) using a network cable with an RJ 45 connector to the existing network structure.

After connection of the network cable, the green LED on the Ethernet interface illuminates continually. The orange LED also illuminates during data exchange, (see section 6.3.3 "Displays of the LEDs on the Ethernet interface").

## 5.7 Connection of sensors

A wide range of sensors, actuators and systems for access monitoring (see section 12 "Accessories") can be connected to the two CAN bus interfaces (fig. 9, item 12 and 13).



Note:

Only **one** CAN bus connection is present on the Processing Unit Compact.

- For example, connect a sensor from the accessories range with a CAN bus interface of the CMC III PU using a CAN bus connection cable.

The following CAN bus connection cable from the CMC III accessories range can be used:

- DK 7030.090 (length 0.5 m)
- DK 7030.091 (length 1 m)
- DK 7030.092 (length 1.5 m)
- DK 7030.093 (length 2 m)
- DK 7030.480 (length 3 m)
- DK 7030.490 (length 4 m)
- DK 7030.094 (length 5 m)
- DK 7030.095 (length 10 m)

Further components are connected as daisy chain.

- If necessary, connect another component (e.g. another sensor type) to the second, free CAN bus interface of the first component.
- Proceed similarly for further components.

The CMC III PU automatically detects each connected sensor. After connection of the sensor, the status display of the multi-LED at the front of the CMC III PU changes appropriately. The LED display on the CAN bus connection also changes (see section 6.3.2 "Displays of the LEDs on the CAN bus connection").



Note:

If a sensor is added subsequently, it may have a newer firmware than the CMC III PU supports. In this case, the CMC III PU does not detect the sensor; the CMC III PU must be updated first.

As of CMC III PU software version 3.11, the appropriate version of the CMC III PU is transferred to a sensor with a newer firmware. The sensor is then ready for use.



Note:

Depending on the configuration of the sensors on the CAN bus, it may be necessary to supply the gateway (DK 7030.030) additionally using an external power supply. Otherwise the CAN bus power does not suffice for activating the PSM modules.



Note:

Further information concerning the connection of sensors is contained in the associated documentation of the accessory part.

## 5.8 Connection of an alarm relay

An external signal source for the alarm signalling can be connected to the potential-free relay output (fig. 9, item 16).

- Observe the pin assignment of the connection (see device label).
- Configure according to the connection of the alarm relay (see section 8.6.5 "General").

## 5.9 Digital inputs

A floating switch contact can be connected to each of the two digital inputs and so, for example, the fault output of an external device evaluated (fig. 9, item 7).

- Configure the digital inputs depending on whether a normally closed or normally open contact is connected to the associated connection (see section 8.3.4 "Input\_1 or Input\_2").



## 6 Commissioning

### 6.1 Switching on the CMC III PU

Once the electrical connection has been established, the CMC III PU starts automatically (see section 5.4 "Electrical connection"). A separate switch-on is not required.

### 6.2 Operating and display elements

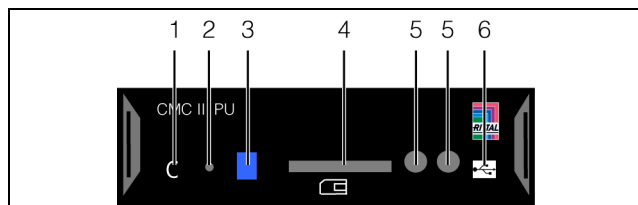


Fig. 10: Front of the CMC III PU

#### Legend

- 1 "C" key for acknowledging messages
- 2 Hidden reset key
- 3 Multi-LED for the status display
- 4 SD-card slot (not for the "Compact" variant)
- 5 Integrated infrared access sensor
- 6 Mini USB connection for configuring

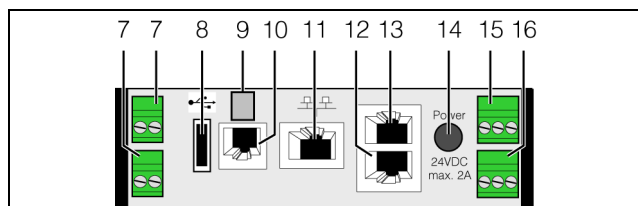


Fig. 11: Rear of the CMC III PU

#### Legend

- 7 Digital inputs (two), per 24 V  $\overline{\text{---}}$ , 10 mA
- 8 USB master connection (not for the "Compact" variant)
- 9 Connection of an external temperature sensor (optional)
- 10 Connection for display, GSM or ISDN unit module, RJ 12 / RS 232, 24 V  $\overline{\text{---}}$ , 500 mA
- 11 Ethernet interface, RJ 45 with PoE
- 12 CAN bus connection (daisy chain) for CMC III sensors and CMC III control units, 24 V  $\overline{\text{---}}$ , 1 A
- 13 Second CAN bus connection (not for the "Compact" variant), 24 V  $\overline{\text{---}}$ , 1 A
- 14 24 V  $\overline{\text{---}}$  power supply (power pack connection)
- 15 24 V  $\overline{\text{---}}$  power supply (direct connection)
- 16 Alarm relay output (floating contact, max. 24 V  $\overline{\text{---}}$ , 1 A)

### 6.3 Displays of the LEDs

A multi-LED for the status display is integrated at the front of the CMC III PU (fig. 10, item 3). Further LEDs are also located on the rear of the CAN bus connection (fig. 11, item 12 and 13) and on the Ethernet interface (fig. 11, item 11).

#### 6.3.1 Multi-LED displays

Continuous lighting of the multi-LED indicates the status of the CMC III PU and of the connected components.

Colour	Status
Green	All units attached to the CAN bus have the "OK" status.
Orange	At least one unit attached to the CAN bus has the "warning" status.
Red	At least one unit attached to the CAN bus has the "alarm" status.

Tab. 3: Continuous lighting of the multi-LED

The flashing code of the multi-LED indicates a status change of the CMC III PU:

Colour	Status
Cyclically green – orange – red	At least one new device was detected on the CAN bus ("Detected" status).
Alternating red – blue	At least one device has been removed from the CAN bus or can no longer be detected over the CAN bus ("Lost" status).
Blue	The position on the CAN bus has been changed for a device ("Changed" status).
Red	Update task running (so-called heartbeat, alternating long and short).
White	Update task running for one or more sensors.

Tab. 4: Flashing codes of the multi-LED

#### 6.3.2 Displays of the LEDs on the CAN bus connection

A red and a green LED are located on the CAN bus connection; they indicate the status of the CAN bus.

Colour	Status
Green (continuous light)	Communication over the CAN bus possible.
Red (flashing)	Transmission fault.

Tab. 5: LEDs for the CAN bus connection

#### 6.3.3 Displays of the LEDs on the Ethernet interface

A green and an orange LED are located on the Ethernet interface; they indicate the status of the network connection.

Colour	Status
Green (continuous light)	Communication via the Ethernet interface possible.

Tab. 6: LEDs for the Ethernet interface

Colour	Status
Orange (flashing)	Interval of the data communication over the network.

Tab. 6: LEDs for the Ethernet interface

## 6.4 Acknowledgement of messages

There are generally three ways of acknowledging messages:

1. A short press of the "C" key on the CMC III PU. This confirms all alarm messages concurrently.
2. By selecting a message with the right mouse button in the message display and clicking on the "Acknowledge Alarm" or "Acknowledge Devices" entry with the left mouse button in the context menu.  
If an alarm message has been selected, "Acknowledge Alarm" confirms only the currently selected message.  
If a message concerning a configuration change has been selected, "Acknowledge Devices" confirms all related messages jointly.
3. By clicking with the right mouse button on a component entry and clicking with the left mouse button on the "Acknowledge Alarm" or "Acknowledge Devices" entry in the context menu.  
This can be used to confirm pending alarm messages for that particular component or all configuration changes.

## 7 Configuration

### 7.1 General

The base configuration of the CMC III PU, in particular the (one-off) customisation of the network settings, can be performed in several ways:

1. HTTP connection via the Ethernet interface
2. Telnet connection via the Ethernet interface
3. Serial connection via a USB cable

An HTTP connection is normally used to make the settings. If this is not possible, e.g. because access via HTTP or HTTPS has been deactivated, access via a Telnet connection is recommended. To do this, as for access using an HTTP connection, the IP address of the CMC III PU must be known. If this address is not known, a direct access to the device can be made using the USB/serial interface at the front of the device.

The following descriptions assume that the CMC III PU is in its delivered state, i.e. no changes have been made to the base configuration. In particular, the "HTTP" and "Telnet" connection types must not be blocked.

### 7.2 HTTP connection

#### 7.2.1 Establishing the connection

- Connect the device with a network cable using the Ethernet interface to your computer (fig. 11, item 10).



Note:

Depending on which computer is used, you may need to use a cross-over cable for this purpose.

- Change the IP address of your computer to any address in the range 192.168.0.xxx, e.g. **192.168.0.191**. The default address **192.168.0.190** of the device must not be used.
- Set the subnet mask to the value **255.255.255.0**.
- If necessary, switch off the proxy server in the browser in order to permit a direct connection to the device.
- Enter the **http://192.168.0.190** address in the browser (fig. 12, item 1). The login dialogue to log in to the device will be displayed.

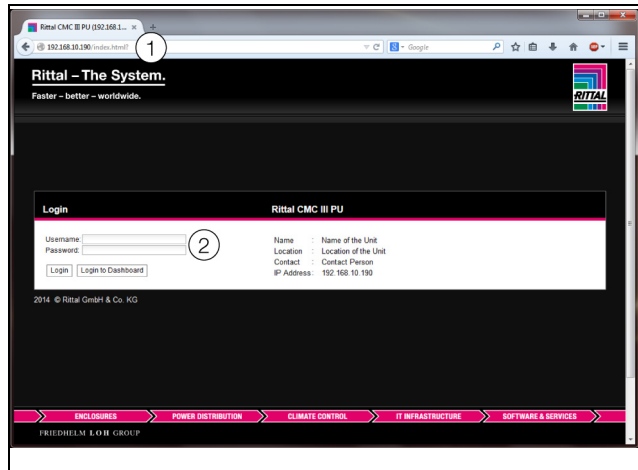


Fig. 12: Login page for an HTTP connection

- Login as **admin** user with password **admin** (fig. 12, item 2).
- Click the **Login** button to display the website of the device.

The overview page of the device appears (fig. 13).



Note:

Alternatively, you can also login to a dashboard directly from the login screen by clicking the **Login to Dashboard** button (see section 8.15.4 "Calling a dashboard").

#### 7.2.2 Changing the network settings

Normally, during the commissioning, customise the network settings of the CMC III PU once so that it is included in your network structure.

- Click the **Processing Unit** entry in the left-hand sub-area (navigation area) of the overview window (fig. 13, item 3) and the **Configuration** tab in the right-hand subarea (configuration area) (fig. 13, item 4).

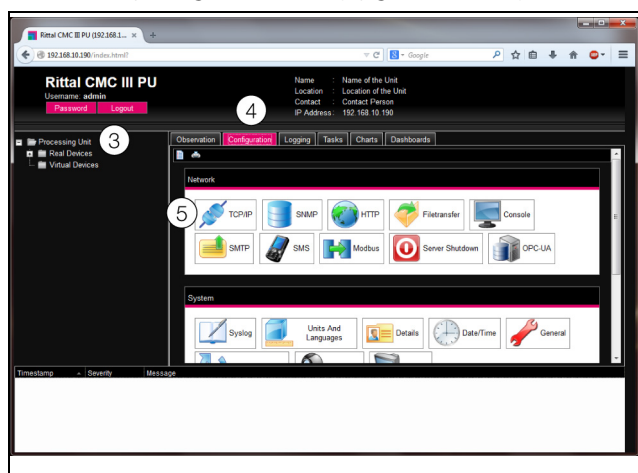


Fig. 13: Customising the TCP/IP settings

- Click the **TCP/IP** button in the **Network** group frame (fig. 13, item 5).



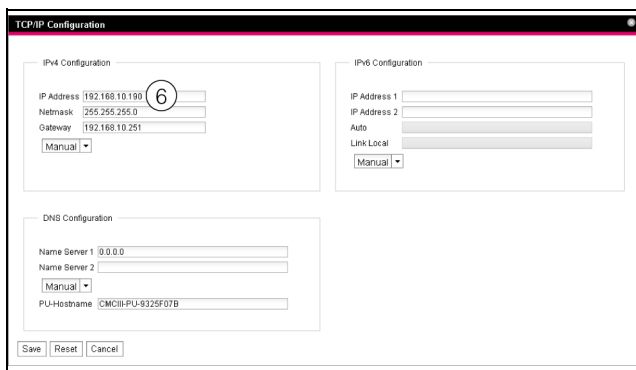


Fig. 14: Customising the TCP/IP settings

**Note:**

The following sections describe in detail how to make the setting for the IPv4 protocol. Further notes regarding the TCP/IP configuration are contained in section 8.5.1 "TCP/IP Configuration".

- Change the IP address of the device in the **TCP/IP Configuration** window in the **IPv4 Configuration** group frame to an address permitted in the network (fig. 14, item 6).
- If necessary, set the correct net mask and gateway.
- Alternatively, select the "DHCPv4" setting instead of "Manual" for an automatic IP allocation.
- Click the **Save** button to save the settings.

**Note:**

If the **Save** button cannot be clicked, an incorrect input has been made (see section 8.2.5 "Other displays"). In this case, first check and possibly correct your inputs.

- Change the network settings of your computer to their original values of the IP address and the subnet mask.
- Disconnect the network cable to your computer.
- Connect the CMC III PU with a network cable with your Ethernet LAN (fig. 11, item 10).

**Note:**

If you have activated the automatic IP assignment ("DHCPv4" setting is activated), you can view the IP address of the CMC III PU using the USB interface (see section 7.4 "USB/serial connection").

### 7.2.3 Configuration

All other possible CMC III PU settings are described in section 8 "Operation".

## 7.3 Telnet connection

Under the Windows XP operating system, the supplied "HyperTerminal" program can be used to establish a Telnet connection. Under the Windows 7 operating system, an equivalent utility program, e.g. "PuTTY", can be

used. Alternatively, the Telnet client from Windows can also be used, although it must first be installed under Windows 7 ("Control Panel" > "Programs" > "Activate or deactivate Windows function").

### 7.3.1 Establishing the connection

The following sections first describe the establishing of a connection using HyperTerminal.

- Start the HyperTerminal with "Start" > "All Programs" > "Accessories" > "Communications" > "HyperTerminal".
- Create a new connection and enter its name or "CMC III PU Telnet".
- Select the "TCP/IP (Winsock)" entry in the "Connect using" list in the "Connect with" dialogue.
- Enter the IP address of the CMC III PU, default "192.168.0.190", in the **Host address** field.
- Enter the port of the Telnet connection, default "23", in the **Port number** field.

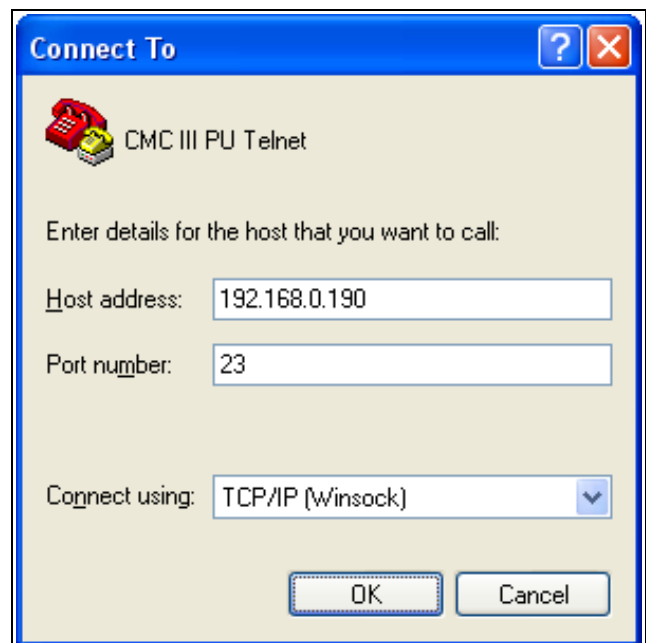


Fig. 15: Connection setting "CMC III PU Telnet"

- Click the **OK** button to establish the connection. The login page appears.

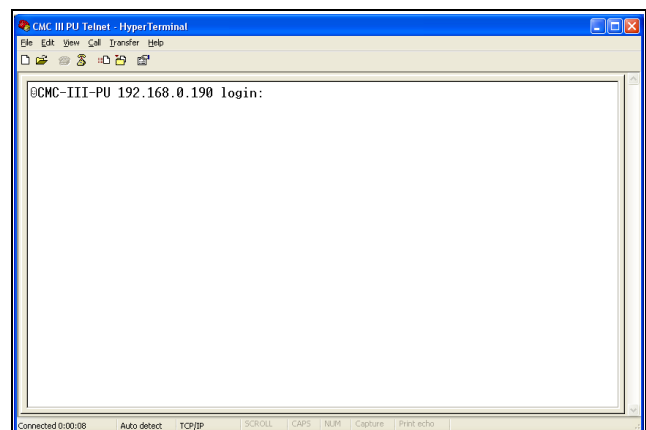


Fig. 16: Login page

## 7 Configuration

EN

The corresponding settings must be made for the "PuTTY" utility program. A screenshot with the appropriate settings is shown below.

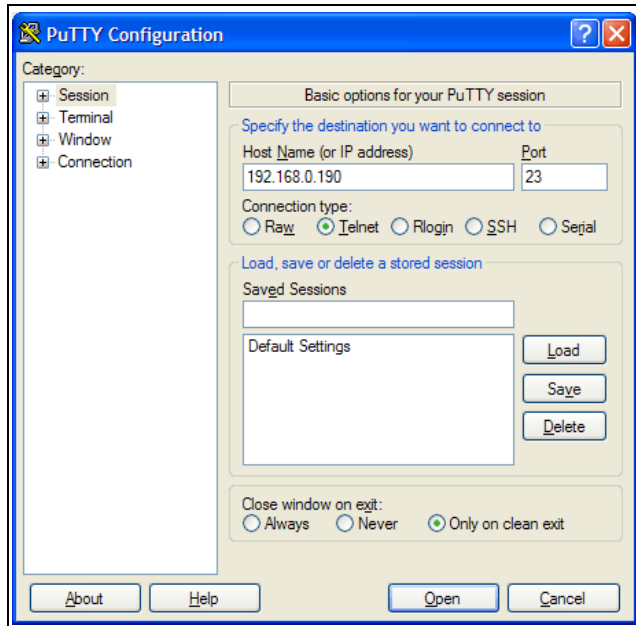


Fig. 17: "PuTTY" connection setting

### 7.3.2 Changing the network settings

The changing of the network settings is described in section 7.5.4 "Input of values", example 1.

## 7.4 USB/serial connection

The access via the USB interface under Windows requires that an appropriate driver for the CMC III PU is installed first. This driver is contained on the CD supplied with the programming cable (DK 7030.080). Alternatively, the driver can be downloaded from the Internet page specified in section 14 "Customer service addresses".

### 7.4.1 Installing the driver

Proceed as follows to install the driver:

- Insert the CD supplied with the programming cable in a CD-ROM drive of your computer.
- Use the USB cable to connect the front mini-USB connection (type B) on the CMC III PU with a USB connection (type A) on your computer.

After a short time, a message appears stating that new hardware "Rittal USB CDC" was found. The wizard for installing the associated driver opens.

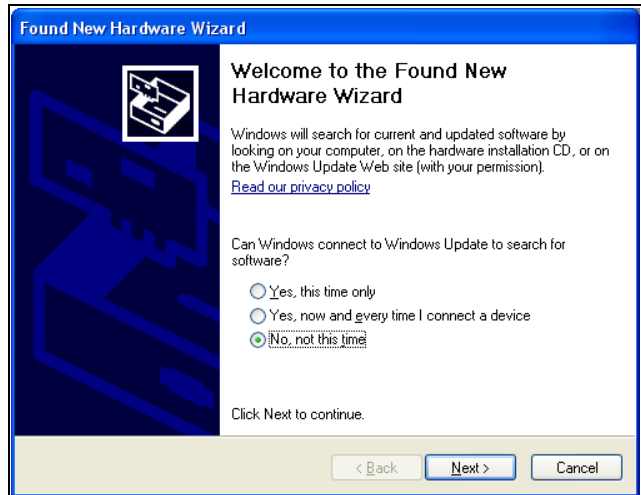


Fig. 18: Do not establish any connection with Windows Update

- On this screen page, select the option "No, not this time" because the driver exists already.
- Click the **Next** button.

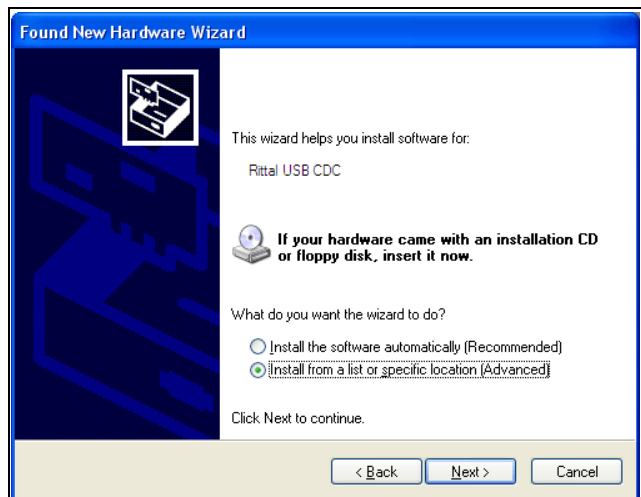


Fig. 19: Installing software from a specific source

- On this screen page, select the option "Install software from a list or specific location".
- Click the **Next** button.

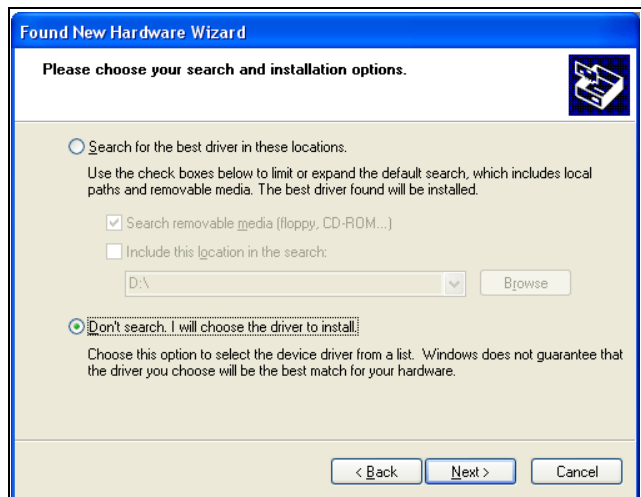


Fig. 20: Selecting the driver that installs itself

- Select on this screen page the option "Don't search, I will choose the driver to install."
- Click the **Next** button.

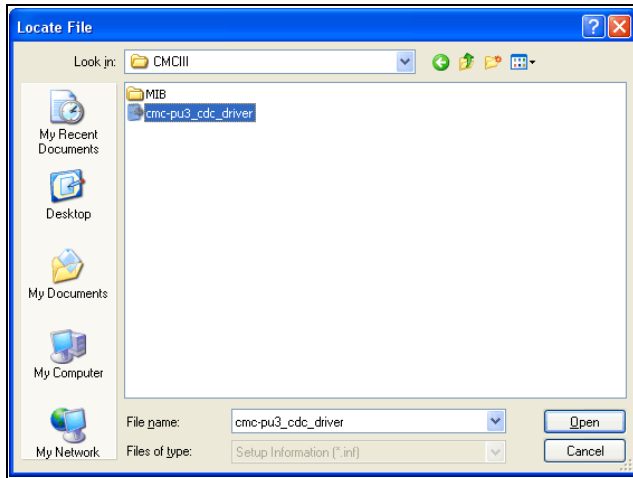


Fig. 21: Selecting the driver

- Select in the "Locate file" dialogue, the driver file that was supplied on the CD.
- Click the **Open** button and in the following "Installation from data medium" dialogue, click **OK** to confirm your selection.

A message appears stating that the driver has failed the Windows logo test.



Fig. 22: "Windows logo test" message

- Click **Continue Anyway**.

A dialogue first appears stating that the driver will now be installed. The following dialogue to complete the installation appears finally.

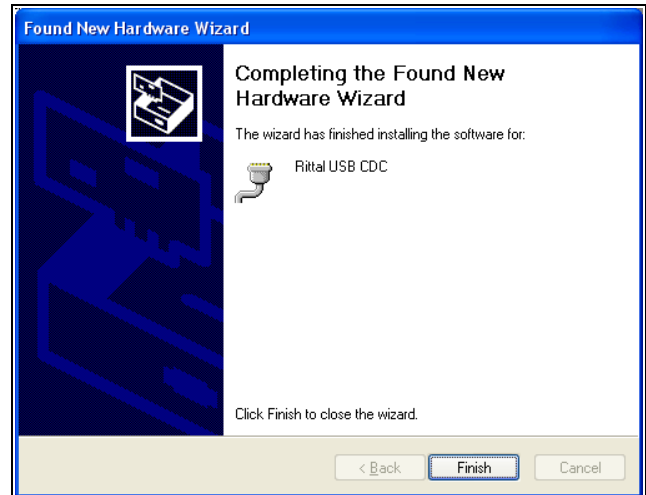


Fig. 23: Finishing the installation

- Finally click **Finish**.

#### 7.4.2 Determining the connection port

After the installation of the driver, a check must be made in the Control Panel to determine on which COM port the CMC III PU was installed.

- Start the Device Manager ("Control Panel" > "System" > "Hardware" > "Device Manager").
- Expand the "Connections (COM and LPT)" entry.

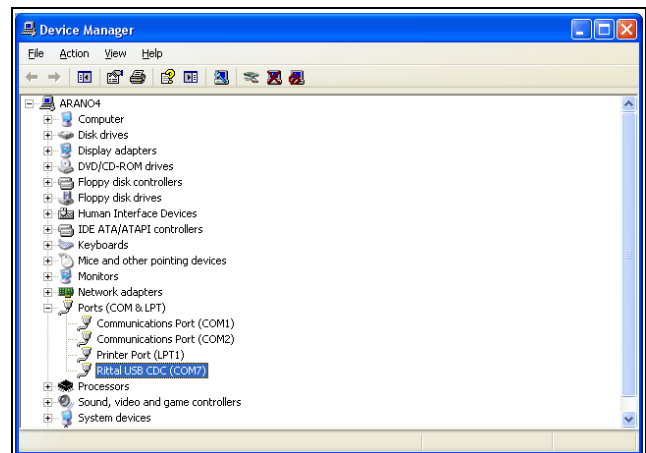


Fig. 24: Device Manager

After the installation of the driver, the COM interface to which the CMC III PU is connected is displayed.

- Note the number of the COM port.



#### Note:

Always connect the CMC III PU to the same USB connection of your computer. If not, you will be requested to reinstall the driver and you must also specify the COM interface again.

#### 7.4.3 Establishing the connection

The following sections describe how to establish a connection using HyperTerminal. The corresponding settings must be made for the "PuTTY" utility program.

# 7 Configuration

EN

- Start the HyperTerminal with "Start" > "Programs" > "Accessories" > "Communication" > "HyperTerminal".
- Create a new connection and enter its name or "CMC III PU USB".
- Select in the "Establish connection using" list in the "Connect To" dialogue the COM port that you specified previously as connection port, e.g. "COM7".

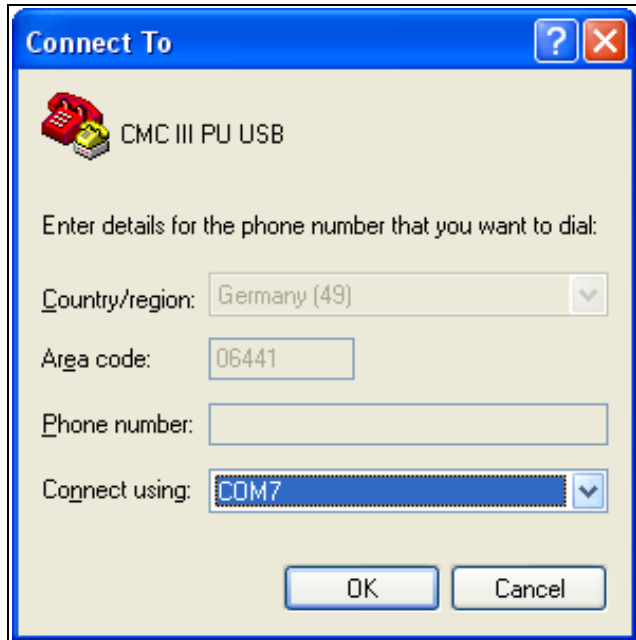


Fig. 25: Connection setting "CMC III PU USB"

- Click the **OK** button to establish the connection.
- Select the following settings in the "COMX properties" dialogue:
  - Bits per second: 9600
  - Data bits: 8
  - Parity: No
  - Stop bits: 1
  - Flow control: Hardware

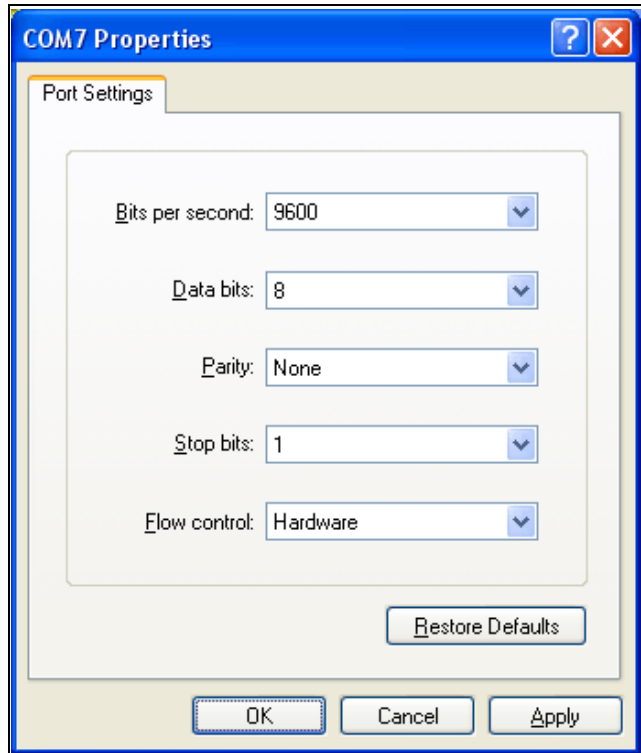


Fig. 26: COMX properties

- Click the **OK** button to establish the connection.
- Press the "Return" key once to display the login page. This corresponds to the login page for a Telnet connection (fig. 16).

## 7.4.4 Changing the network settings

Changing of the network settings is described in section 7.5.4 "Input of values", example 1.

## 7.5 Basic settings

The following descriptions apply to access via "Telnet" or "USB/serial". Access via the CMC III PU website is described in section 8 "Operation".

### 7.5.1 Login to the CMC III PU

Once the connection has been established, the login page appears.

- Enter in the line **[Hostname] login:** \_ the user name.



Note:

Rather than the placeholder [hostname], the host name of the CMC III PU stored for the login is displayed (e.g. "CMCIII-PU-9325F07B").

- Enter in the line **Password:** \_ the associated password.



Note:

The user "admin" with the password "admin" and the user "cmc" with the password "cmc" are stored as factory settings.

- If necessary, press the "Return" key once.  
The **CMC-III Main Menu** appears.

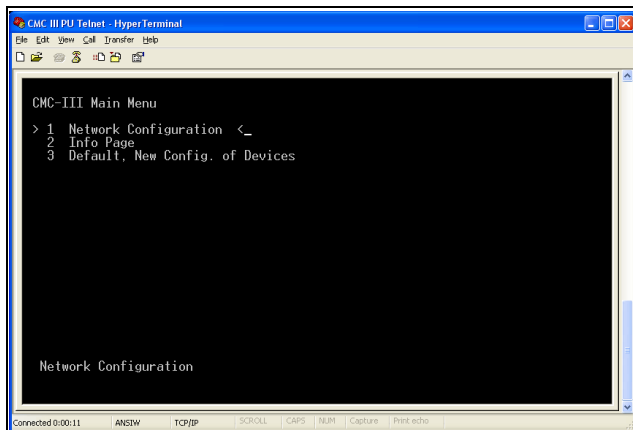


Fig. 27: CMC-III Main Menu

### 7.5.2 Menu structure

A Telnet or USB/serial connection can be used to make the base settings of the CMC III PU using the following menu structure:

1	Network Configuration
1	IPv4 Configuration
1	IPv4 Address
2	IPv4 Subnet mask
3	IPv4 Gateway
4	Enable/Disable DHCPv4
2	IPv6 Configuration
1	IPv6 Address 1
2	IPv6 Address 2
3	IPv6 Configuration
3	DNS Configuration
1	DNS Server 1
2	DNS Server 2
3	DNS Mode
4	Hostname
4	LDAP Configuration
1	LDAP Server
2	Enable/Disable LDAP
5	Radius Configuration
1	Radius Server
2	Enable/Disable Radius
6	Settings Ethernet Port

7	System Name
8	System Contact
9	System Location
A	Actual Date
B	Actual Time
C	Beeper
D	Security
1	Change User Password
2	Enable Web Access
3	Change HTTP Port
4	Change HTTPs Port
E	Reboot CMC III
2	Network Info Page
3	System Info Page
4	Console Commands
1	Command (by DescName)
2	Command (by VariableName)
3	RS232 Console
5	Set CMC III Configuration
1	Set General Configuration to Default
2	Set all Tasks to Default
3	Set all Charts to Default

You can also use the CMC III PU website to access most of the parameters that can be accessed using the Telnet or USB/serial connection. Consequently, the associated descriptions are contained in section 8 "Operation". Only the few settings not available from the website are described in section 7.5.5 "Special settings and notes".

### 7.5.3 Navigating in the menu structure

The individual menu items are selected with the associated number shown before each menu item.

Starting at the **CMC-III Main Menu**, for example, it is possible to select the following three submenus:

- Key "1": **Network Configuration** submenu
- Key "2": **CMC III Network Info** submenu
- Key "3": **CMC III System Info** submenu
- Key "4": **CMC III Console Commands** submenu
- Key "5": **CMC III Configuration** submenu

Alternatively, you can use the "arrow" keys, the "Return" key and the "Esc" key to navigate through the menus.

# 7 Configuration

EN

## 7.5.4 Input of values

The stored parameter values are displayed within pointed brackets, ">" and "<", at the end of each line. To change a value, similar to navigating in the menu structure, select the appropriate parameter using the associated number. To accept a changed value, you must always press the "Esc" key.

### Example 1: Changing the network settings for IPv4

- In the **CMC-III Main Menu**, press key "1" to select the **Network Configuration** submenu.
- Press key "1" again to select the **IPv4 Configuration** submenu.
- Press key "1" again to select the **IPv4 Address** parameter.
- Clear the default address stored there and enter instead a valid network address.
- Press the "Return" key to confirm the input.  
The entered address is displayed accordingly at the end of the line.
- Press the "Esc" key to exit the **IPv4 Configuration** menu.

If the access to the device was made via Telnet, changing the IP address means that initially no further communication via the HyperTerminal is possible.

- First terminate the current connection.
- Establish a new connection with the changed IP address.

### Example 2: Changing the name of the contact person

- In the **CMC-III Main Menu**, press key "1" to select the **Network Configuration** submenu.
- Press key "6" to select the **System Contact** parameter.
- Enter the appropriate name of the contact person, e.g. **Contact person CMC III PU**.
- Press the "Return" key to confirm the input.  
The entered name is displayed accordingly at the end of the line.
- Press the "Esc" key again to exit the **Network Configuration** menu.



#### Note:

If after changing a value you switch to another submenu, the value is **not** accepted.

## 7.5.5 Special settings and notes

The following settings are not available over the website but only over a Telnet or USB/serial connection.

Parameter	Explanation
Enable Web Access	Activate or deactivate access via HTTP(S) to the CMC III PU.

Tab. 7: Special settings

Parameter	Explanation
Set General Configuration to Default	Reset all CMC III PU settings to the factory settings.
Settings Ethernet Port	Set the transmission speed and the duplex procedure or the Autonegotiation for the network interface of the CMC III PU.
RS232 Console	Settings of the RS 232 interface (RJ 12 socket) for connection of a GSM, ISDN or Display Unit ("Disabled" setting) or for the remote control ("Enabled" setting).
Set all Tasks to Default	Reset all tasks to the delivered state (empty).
Set all Charts to Default	Reset all charts to the delivered state (empty).

Tab. 7: Special settings



#### Note:

If the **RS232 Console** parameter is used to activate the remote control ("Enabled" setting), a connected GSM, ISDN or Display Unit does **not** function.

If you select the **Automatic DHCP** value via a Telnet or USB/serial connection for the **DNS Mode** parameter in the **DNS Configuration** submenu, observe the following notes:

- Set the **Enabled** value for the **Enable/Disable DHCPv4** parameter in at least one of the **IPv4 Configuration** or **IPv6 Configuration** submenus.
- Alternatively or additionally, set in the **IPv6 Configuration** submenu the **DHCPv6** value for the **IPv6 Configuration** parameter.
- Under no circumstances deactivate DHCP for **both** IPv4 and IPv6 protocols after you have made the above-mentioned DNS configuration.

## 7.5.6 Performing switch commands

A user with administration rights can use a Telnet connection to switch the outputs for sensors connected to a CMC III PU (e.g. the slots of a switchable PSM module).

- In the **CMC-III Main Menu**, press key "4" to select the **CMC III Console Commands** submenu.

You can now trigger an output using either the name (DescName) assigned to the relay output or the complete variable name.



#### Note:

The following representation shows a selection from the website and serves only as explanation of the "DescName", "VariableName" and "Command" terms.



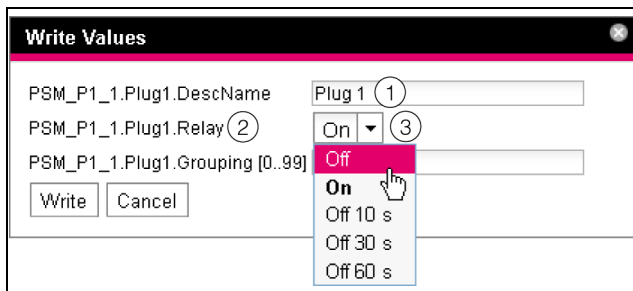


Fig. 28: Performing switch commands

**Key**

- 1 DescName
- 2 VariableName
- 3 Command

**Switching using the assigned name**

- Press key "1" to select the **Command (by Desc-Name)** command.
- Enter the command in the "Device.DescName:Command" format.

Parameter	Explanation
Device	The device index (ID number) that is prefixed to the associated Real Device in the navigation area of the CMC III PU website.
DescName	The specific description that was assigned to the output or the socket (fig. 28, item 1).
Command	The command to be performed. The following commands are supported: "Off", "On", "Off 10 s", "Off 30 s", "Off 60 s" (fig. 28, item 3).

Tab. 8: Parameter (switch using the assigned name)

- Press the Return key to confirm the input (e.g. "3.Plug 1:Off").

If the switching command could be performed, an appropriate message will be displayed (e.g. "Device 3.Output 'Plug 1' switched to 'Off'"). If an error occurred, an error message will be displayed (e.g. "Device 3 not available").

**Switching using the complete variable name**

- Press key "2" to select the **Command (by Variable-Name)** command.
- Enter the command in the "Device.Variable-Name:Command" format.

Parameter	Explanation
Device	The device index (ID number) that is prefixed to the associated Real Device in the navigation area of the CMC III PU website (fig. 28, item 2).

Tab. 9: Parameter (switch using the complete variable name)

Parameter	Explanation
Variable-Name	The variable name of the output or the socket that consists of three components each separated with a period.
Command	The command to be performed. The following commands are supported: "Off", "On", "Off 10 s", "Off 30 s", "Off 60 s" (fig 28, item 3).

Tab. 9: Parameter (switch using the complete variable name)

- Press the Return key to confirm the input (e.g. "3.PSM\_P1\_1.Plug1.Relay:Off").

If the switching command could be performed, an appropriate message will be displayed (e.g. "Device 3.Output 'PSM\_P1\_1.Plug1.Relay' switched to 'Off'"). If an error occurred, an error message will be displayed (e.g. "Device 3 not available").

**7.5.7 Logout from the CMC III PU**

Once you have performed all required settings on the CMC III PU, logout again. To do this:

- Press the "Esc" key repeatedly until you return to the **CMC-III Main Menu**.
- Press the "Esc" key again. The following message appears at the lower screen edge:  
Logout? [Y = Yes]
- Press the "Y" key to log out.
- Press any other key if you do not want to log out.

## 8 Operation

### 8.1 General

The following sections describe all settings made available via an HTTP gateway.



**Note:**

If the CMC III PU is deployed in an environment subject to high EMC loading, parts of the website may be displayed incorrectly. In such a case, reload the website from the browser.

### 8.2 General operation

#### 8.2.1 Screen structure

After login to the CMC III PU (see section 7.2.1 "Establishing the connection"), the web user interface for operation of the device is displayed. The screen is generally divided into four different areas:

1. Upper area: Display of general information about the device, change of the password and logout of the current user (see section 8.2.8 "Logout and changing the password").
2. Left-hand area (navigation area): Selection of the complete system or the associated component for which the information should be shown in the right-hand area of the screen (see section 8.2.2 "Navigation area in the left-hand area").
3. Right-hand area (configuration area): Display of six tabs (see section 8.2.3 "Tabs in the configuration area") with input possibilities for all settings.
4. Lower area: Display of messages (see section 8.2.4 "Message display").



Fig. 29: Screen structure

**Key**

- 1 General information
- 2 Navigation area
- 3 Configuration area with tabs
- 4 Message display

#### 8.2.2 Navigation area in the left-hand area

The complete system, including all installed components, is displayed as a tree view in the navigation area of the screen.

The Processing Unit, i.e. the complete system, is located at the top of the navigation area. Two subgroups are displayed below the complete system.

1. Real Devices: This group lists the CMC III PU itself as well as all hardware-installed devices and sensors.
2. Virtual Devices: This group displays all virtual devices that were created in the CMC III PU (see section 8.13 "Virtual Devices").

Each device, irrespective of whether it is a real device or a virtual device, can assume various states. To quickly determine the current status, the symbol in front of the associated device is colour-highlighted:

Symbol	Explanation
	"OK" status. No warning or alarm messages are pending.
	"Warning" status. At least one warning message is pending.
	"Alarm" status. At least one alarm message is pending.
	"OK" status. The additional information flag indicates that additional status information can be displayed. This symbol is displayed only when the logged on user has at least read access to the data of the associated device (see section 8.8 "Device Rights").
	"Detected" status. The sensor has been newly added, but has not yet been confirmed. This sensor must still be confirmed by pressing the "C" key on the CMC III PU or via the website.
	"Lost" status. The communication to a sensor is no longer possible. The connection must be checked. Alternatively, the sensor can also be deactivated by confirmation.
	"Changed" status. The sequence of the sensors has been changed, but has not yet been confirmed. This configuration change must still be confirmed by pressing the "C" key on the CMC III PU or via the website (see section 6.4 "Acknowledgement of messages").

Tab. 10: Symbols for the status display

#### 8.2.3 Tabs in the configuration area

Four tabs are displayed in the right-hand area of the screen:

1. Observation: The current data of the CMC III PU or the connected devices (see section 8.3 "Observation tab").
2. Configuration: Configuration of the basic settings (see section 8.4 "Configuration tab").



3. Logging: The message archive for the CMC III PU or the connected devices (see section 8.11 "Logging").
4. Tasks: Creation of the links for various values and the associated actions (see section 8.12 "Tasks").
5. Charts: Charts for the chronological trend of the variable values (see section 8.14 "Charts").
6. Dashboards: Creation of different views as dashboards (see section 8.15 "Dashboards").

The content of the **Observation** and **Configuration** tabs depends on whether the complete system ("Processing Unit" entry) or a single component, e.g. the "CMCIII-PU" entry, has been selected in the left-hand area of the screen.

### 8.2.4 Message display

Currently pending messages are displayed in the lower area of the screen. The message display has the following structure:

1. Timestamp: Date and time when the error occurred (fig. 30, item 1).
2. Severity: The severity of the error that has occurred. A differentiation is made between warnings and alarms (fig. 30, item 2).
3. Message: Error message in plain text (fig. 30, item 3).

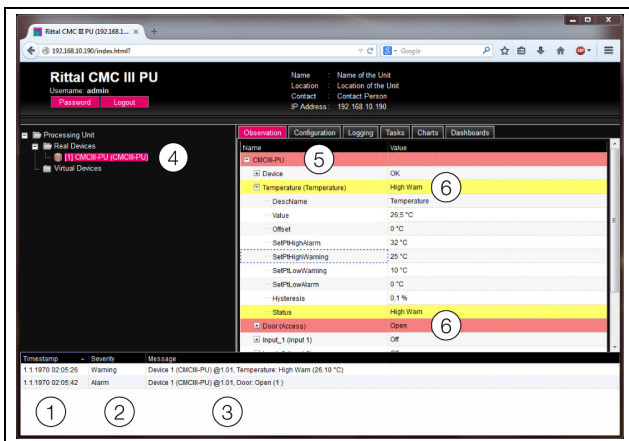


Fig. 30: Structure of the message display

#### Key

- 1 Date and time
- 2 Error class
- 3 Error message in plain text
- 4 Component with error message
- 5 Component
- 6 Parameter

The occurred errors are also displayed as follows:

- Left-hand screen area (navigation area): The symbol in front of the component on which the error occurred is colour-highlighted (red for an alarm, yellow for a warning; fig. 30, item 4).
- Right-hand screen area (configuration area): The complete component as well as the special parameters for which the warning or alarm is pending is coloured red or yellow on the **Observation** tab (fig. 30, item 5 and 6).

- The multi-LED on the front of the CMC III PU lights continually red or orange.
- Depending on the settings, the alarm relay latches and the CMC III PU issues an acoustic signal.

Once the cause of an error message has been corrected, the associated message can be deleted automatically from the message display. The status of the associated component can also be reset and all other displays caused by the error can disappear. This, however, depends on the selected alarm configuration (see section 8.9 "Alarm Configuration"). Error messages and the status may also remain in the overview until they have been acknowledged with the "C" key on the CMC III PU (see section 6.4 "Acknowledgement of messages").

If a permanent configuration change is made on the device, e.g. a new sensor connected to the CMC III PU, it will also be output as error message of the "Alarm" type in the message display. In this case, the multi-LED in the front of the CMC III PU flashes cyclically green – orange – red. Such a configuration change is deleted from the message display only when it has been confirmed by the operator (see section 6.4 "Acknowledgement of messages").

Example: Excessive temperature value

If the temperature sensor integrated on the CMC III PU measures a temperature that lies above the value stored in "SetPtHighWarning", a warning message will be issued.

In this case, the following changes occur in the representation:

- The symbol in front of the CMCIII-PU component in the navigation area is yellow-highlighted.
- The complete component as well as the "Temperature" and "Status" lines have a yellow background on the **Observation** tab. The "High Warn" warning message is also issued.
- The appropriate warning message appears in the message display.

When the temperature again falls below the "SetPt-HighWarning" value plus the hysteresis value (see section 13 "Glossary"), it depends on the alarm configuration whether the message is deleted automatically from the message display and the associated status displays are reset again (see section 8.9 "Alarm Configuration").

### 8.2.5 Other displays

The operator inputs in the web user interface are checked automatically using specified rules depending on the entered parameter. This means changes can be

## 8 Operation

EN

saved only when all values have been previously entered correctly in a dialogue.

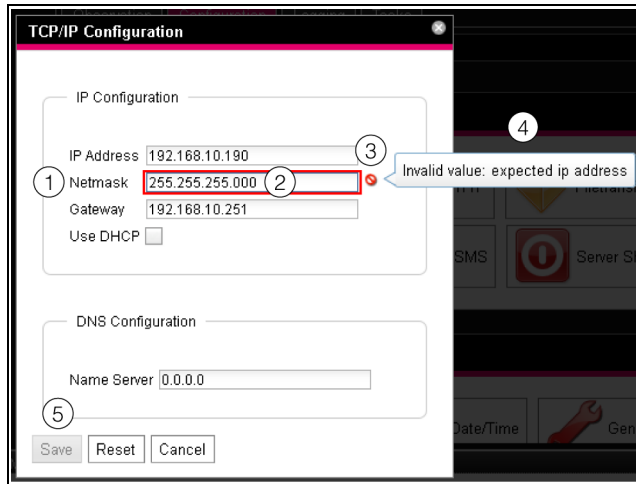


Fig. 31: Display of an incorrect input

### Key

- 1 Field **Netmask**
- 2 Faulty entry
- 3 Prohibit symbol
- 4 Note:
- 5 Inactive button

The following changes result after an incorrect input in the dialogue (in this example, an incorrectly entered IP address):

- A red "prohibit symbol" (fig. 31, item 3) appears behind the faulty entry (fig. 31, item 2) in the field **Netmask** (fig. 31, item 1).
- When you place the mouse pointer over the prohibit symbol, a notice with additional information about the error appears (fig. 31, item 4).
- The **Save** button is deactivated (fig. 31, item 5) so that the currently stored values cannot be saved.

Proceed as follows to correct the error:

- Check using the notice which incorrect input is present.  
In the example shown, the value entered does not have the format of an IP address.
- Correct the incorrect value; enter, for example, the value "255.255.255.0".  
The "prohibit symbol" is hidden and the **Save** button is activated.
- Click the **Save** button to save the settings.

### 8.2.6 Changing parameter values

The list representation of the **Observation** tab displays the various parameters of the associated selected component. Whereas the operator can change some of these parameters, others have fixed values.

For all parameters that can be changed, an "edit" symbol in the form of a stylised notebook with pencil appears behind the associated parameter when you place the mouse cursor in the appropriate row (fig. 32, item 1).

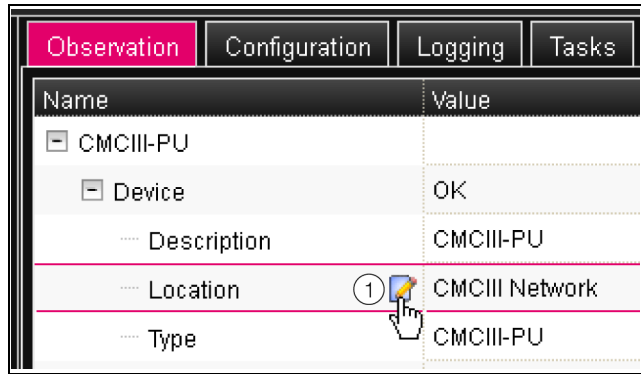


Fig. 32: Editable parameter with "edit" symbol

### Key

- 1 "Edit" symbol

If this symbol does not appear, the associated value cannot be changed.

Example:

- Select the "CMCIII-PU" entry in the navigation area.
- Click the **Observation** tab in the right-hand part of the screen.
- Expand successively the "CMCIII-PU" and "Device" entries by clicking the "plus" character in front of the entry (fig. 33, item 1).

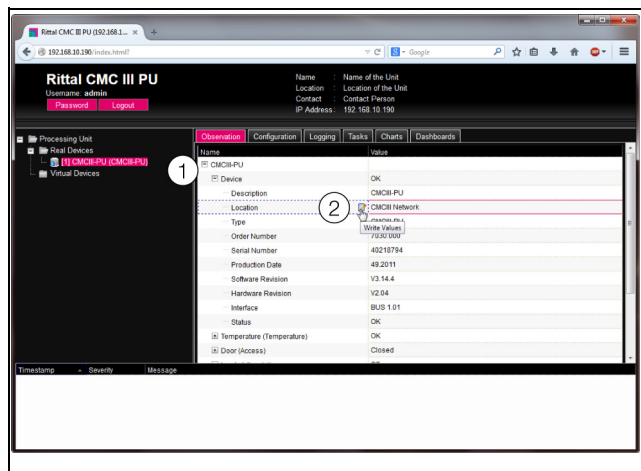


Fig. 33: Selection of a single parameter

### Key

- 1 CMCIII-PU and Device entries
- 2 "Location" parameter

- Place the mouse cursor at the end of the first column in the "Location" row (fig. 33, item 2).  
An "edit" symbol appears and the mouse cursor changes to a "hand" symbol.
- Click the "edit" symbol.  
The "Write Values" dialogue with the "Device.Location" parameter appears.

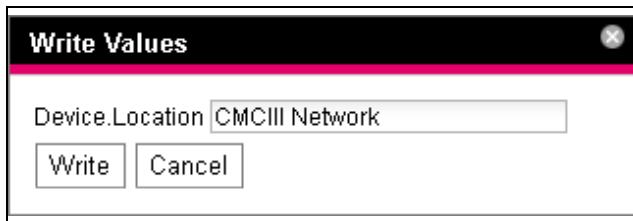


Fig. 34: "Write Values" dialogue

- Enter the location of the CMC III PU, e.g. "CMC III Enclosure 1".
- Confirm the entry by clicking the **Write** button.  
The dialogue closes and the new value appears in the "Location" row.
- Now place the mouse cursor at the end of the first column in the "Type" row.  
**No** "edit" symbol appears, i.e. you cannot change the "CMC III PU" value stored here.

Perhaps you want to change several values at once or you do not know under which entry the desired parameter is stored. In this case, you can also display in a shared window all parameter values of the lowerlevel entries to be changed.

- Expand the "CMCIII PU" entry by clicking the "plus" character in front of this entry (fig. 35, item 1).
- Place the mouse cursor at the end of the first column in the "Device" row (fig. 35, item 2).  
An "edit" symbol appears and the mouse cursor changes to a "hand" symbol.

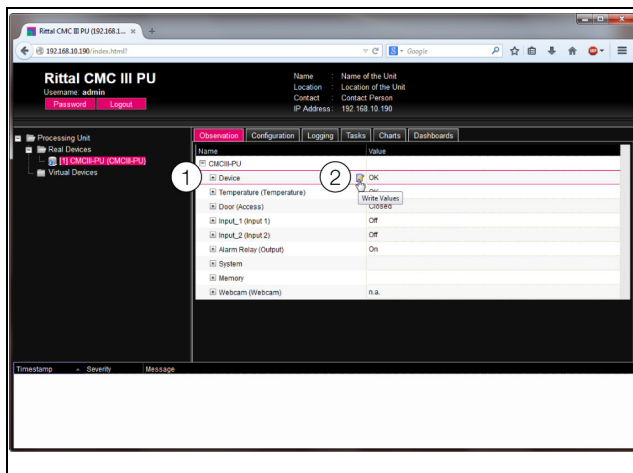


Fig. 35: Selecting several parameters

#### Key

- 1 Device entry
- 2 "Edit" symbol

- Click the "edit" symbol.  
The "Write Values" dialogue with the two "Device.Description" and "Device.Location" parameters appears.

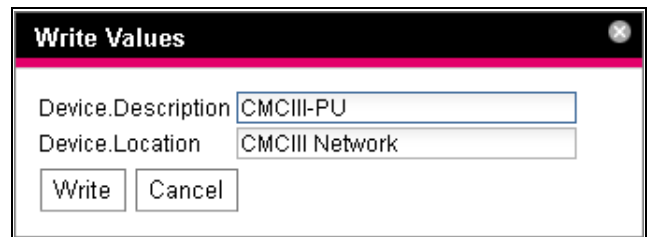


Fig. 36: "Write Values" dialogue with several parameters

- Save the changed values for all desired parameters.
- Confirm the entries by clicking the **Write** button.  
The dialogue closes.
- Expand the "Device" entry by clicking the "plus" character in front of this entry.  
You can now view all changed values.

The "Write Values" dialogue displays all the parameters that can be changed below the previously selected level. For example, if you click the "edit" symbol in the uppermost "CMCIII-PU" level, **all** parameters that can be changed for the complete component are displayed.



#### Note:

If too many variables are to be changed, an error message appears. In such a case, you must switch to the next lower level.

### 8.2.7 Undock function

For some sensors, such as the Power Unit, a graphic overview is displayed on the CMC III PU website. This overview can be remote from the current browser window and viewed in its own window.



#### Note:

The Undock function is not available for Internet Explorer. This button is absent.

- Select the associated sensor, e.g. "CMCIII-POW", in the navigation area.
- In the right-hand part of the screen, select the **Observation** tab.
- Expand the associated entry, e.g. "CMCIII-POW", by clicking the "plus" icon in front of it.  
If, after selecting the "CMCIII-POW" level, the subordinate entries "Device", "General", etc. are displayed, you can switch to the graphical representation as follows:
- Click the coloured "graphic" icon suffixed to the "CMCIII-POW" entry in the form of a stylised chart (fig. 37).

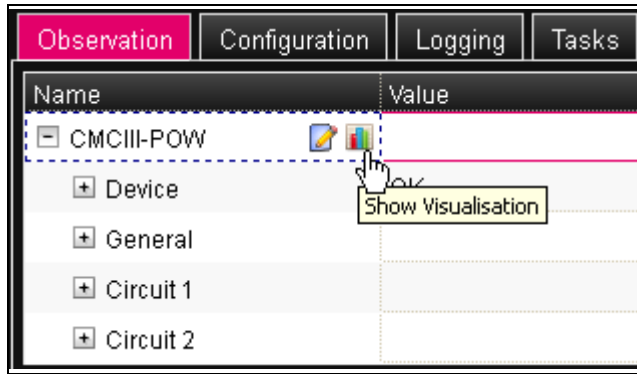


Fig. 37: "Graphic" icon

The display changes to the graphical representation.

- Click the **Undock** button in the graphical representation.

The Power Unit window is remote from the CMC III PU website and the "Visualisation is undocked" message appears in the main window.

The remote window can be moved and altered in size independent of the window with the actual CMC III PU website. This function can be used by several sensors and so a complete overview created on the PC screen.

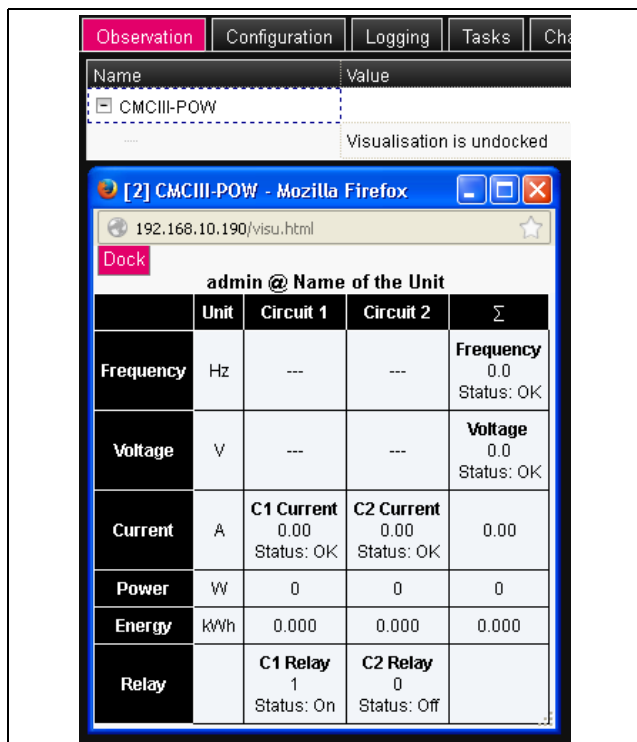


Fig. 38: Remote window of the Power Unit

- Click the **Dock** button in the separate window or simply close the window to display the overview again in the main window.



**Note:**

If a value is in edit mode in the main window, all remote windows are darkened and no further actions can be performed there.

## 8.2.8 Logout and changing the password

For each user group (and thus also for each user), a time can be specified after which the user will be logged out automatically in case of inactivity (see section 8.7 "Security"). A user can, however, also logout from the web user interface.



**Note:**

After the **direct** login on a dashboard, the user is **not** logged out automatically after the predefined time. The user remains logged in to CMC III PU while the dashboard is open.

- Click the **Logout** button on the right-hand side in the upper area of the screen.  
The logout is performed immediately and the Login window appears.

Users can also change their own password in the web user interface.

- Click the **Password** button on the right-hand side in the upper area of the screen.  
The "Set new password for user XXX" dialogue appears.

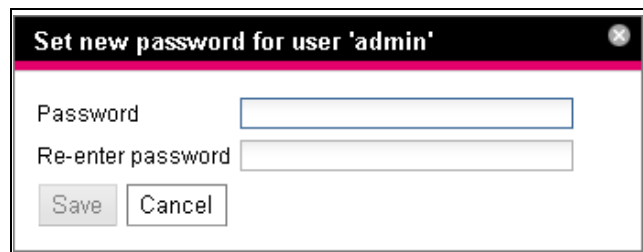


Fig. 39: Changing the password

- Enter the new password in the "Password" line (at least three characters) and repeat it in the "Re-enter password" line.

When both entries match, you must use the new password for the next login to the system.



**Note:**

Irrespective of this change, a user with the appropriate rights can change the passwords of **all** users from the user administration (see section 8.7.2 "Users").

## 8.2.9 Reorganising the connected components

For the new installation of components on the CMC III PU, they can be added in the navigation area at the next free location and then receive the appropriate ID number. Multiple upgrades or changes to the connected components, in particular, can mean there is no association between the position of the components on the CAN bus and the associated ID number.

The "Reorganise" function renumbers all connected components. The numbering begins with the components on CAN bus connection 1 of the CMC III PU. They are then numbered in the sequence with which they are

connected. Finally, all components on CAN bus connection 2 are processed similarly.

- Click the "Processing Unit" entry in the navigation area or right-click any other connected component.

- Left-click the "Reorganise" entry in the context menu. A message appears stating that the reorganisation has caused the components to be reindexed. This can cause problems for the access to these components, e.g. via SNMP, so that this access must be reconfigured. The "Alarm Configuration" of the individual sensors, however, is retained.

The sensors are then registered automatically again on the CMC III PU.



Note:

The reorganisation of the components removes, in particular, all components with the "Lost" status from the navigation area.

### 8.3 Observation tab

The **Observation** tab is used to make all settings for the individual components of the system, such as limit values for warning and alarm messages. The display in the right-hand screen depends on which component was selected in the navigation area.

- If you select the "Processing Unit" (uppermost node) entry in the navigation area, the **Observation** tab, all "Real Devices" and all "Virtual Devices" are available for selection.
- If you select the "Real Devices" or "Virtual Devices" entry in the navigation area, the **Observation** tab contains only those components for selection that belong to the appropriate group.
- If you select a special component in the navigation area, e.g. the "CMCIII-PU" entry, the **Observation** tab contains only these components for selection.



Note:

It is not possible to change parameters for different components together.

In the following sections 8.3.1 "Device" to 8.3.8 "Webcam", only those parameters for which you can make changes are described in detail. There are also display values used only for information purposes.

#### 8.3.1 Device

General settings for the CMC III PU or the associated selected component are made on the "Device" level.

Parameter	Explanation
Description	Individual description of the CMC III PU.
Location	Installation site of the CMC III PU.

Tab. 11: Settings in the "Device" level

Parameters are also displayed that provide detailed information about the selected component, such as the version of the deployed software and hardware. You should have such information available, in particular to permit fast troubleshooting for queries with Rittal.

#### 8.3.2 Temperature

Settings for the integrated temperature sensor are performed on the "Temperature" level.

Parameter	Explanation
DescName	Individual description of the temperature sensor.
Offset	The offset value used to correct the measured temperature.
SetPtHigh-Alarm	Upper limit temperature which when overshoot causes an alarm message to be issued.
SetPtHigh-Warning	Upper limit temperature which when overshoot causes a warning message to be issued.
SetPtLow-Warning	Lower limit temperature which when undershoot causes a warning message to be issued.
SetPtLow-Alarm	Lower limit temperature which when undershoot causes an alarm message to be issued.
Hysteresis	Required percentage deviation for undershooting or overshooting of the limit temperature for a status change (see section 13 "Glossary").

Tab. 12: Settings in the "Temperature" level

The following parameters are also displayed for the temperature sensor:

Parameter	Explanation
Value	Currently measured temperature value corrected with the offset value.
Status	Current status of the sensor.

Tab. 13: Displays in the "Temperature" level



Note:

If the value "0" is entered for all limit values at the "Temperature" level, the status of the integrated temperature sensor is always "OK".

#### 8.3.3 Door (Access)

Settings for the integrated access sensor are performed on the "Door (Access)" level.



## 8 Operation

EN

Parameter	Explanation
DescName	Individual description of the access sensor.
Sensitivity	Sensor separation to door (1 = small, 3 = large). The input of the value "0" deactivates the integrated access sensor.
Delay	Time delay with which the status message is changed.

Tab. 14: Settings in the "Door (Access)" level

The following parameters are also displayed for the access sensor:

Parameter	Explanation
Value	Current value of the access sensors (0 = door open, 1 = door closed).
Status	Current status of the access sensor taking account of the delay value ("Open" or "Closed").

Tab. 15: Displays in the "Door (Access)" level

### 8.3.4 Input\_1 or Input\_2

The separate settings for both integrated digital inputs are made on the "Input\_1" and "Input\_2" levels.

Parameter	Explanation
DescName	Individual description of the associated input.
Logic	Selection of the input circuit logic. The following options are available: 0: Off / 1: On 0: On / 1: Off 0: OK / 1: Alarm 0: Alarm / 1: OK
Delay	Time delay with which the status message is changed.

Tab. 16: Settings in the "Input\_1" and "Input\_2" levels

The following parameters are also displayed for the two digital inputs:

Parameter	Explanation
Value	Current value of the associated input (0 or 1).
Status	Current status of the associated input taking account of the delay value and the set logic.

Tab. 17: Displays in the "Input\_1" and "Input\_2" levels

### 8.3.5 Alarm Relay (Output)

The description for the integrated alarm relay can be changed on the "Alarm Relay (Output)" level.

Parameter	Explanation
DescName	Individual description of the alarm relay.

Tab. 18: Settings in the "Output" level

The following parameters are also displayed for the alarm relay:

Parameter	Explanation
Relay	Current value of the alarm relay ("On" or "Off"). If the alarm relay is disabled, the relay can also be switched manually via the website.
Logic	Circuit logic of the alarm relay. 0: Off / 1: On
Status	Current status of the output ("On" or "Off").

Tab. 19: Displays in the "Alarm Relay (Output)" level



**Note:**

The circuit logic of the alarm relay can be switched in the "General Configuration" dialogue (see section 8.6.5 "General").

### 8.3.6 System

The following additional information concerning the CMC III PU is displayed in the individual sublevels of the "System" level.

#### "V24 Unit (V24 Port)" sublevel

Information for a connected GSM unit, ISDN unit or display unit is displayed.

Parameter	Explanation
DescName	Individual description of the connected unit.

Tab. 20: Displays in the "V24 Unit (V24 Port)" sublevel

The following parameters are also displayed for the unit:

Parameter	Explanation
Message	The current status of the unit. One of the messages below is displayed here, depending on the status of the unit.
Signal	Current signal strength.
Status	The current status of the unit ("OK" or "n.a." if no unit is connected). When these variables are changed (removal of a connected unit), a task can be used to send an appropriate message (e.g. by e-mail, SMS or SNMP).

Tab. 21: Displays in the "V24 Unit (V24 Port)" sublevel

The "Message" parameter in the "V24 Unit (V24 Port)" sublevel can assume the following values:

Parameter	Explanation
no SMS unit found	No unit connected.
GSM unit found	GSM Unit connected, the unit is signed on to the network.
GSM unit o.k.	GSM Unit ready.
ISDN unit found	ISDN Unit connected, the unit is signed on to the network.
ISDN unit o.k.	ISDN Unit ready.
sending SMS	SMS sent.
receive SMS	SMS received.
SMS unit timeout	SMS Unit timeout, no connection possible.
GSM unit: PIN is missing	No PIN entered.
GSM unit: Service number missing	No service number entered.
GSM unit: wrong PIN	Incorrect PIN entered.
GSM unit: PUK needed	The PUK must be entered.
GSM unit: not registered	The GSM Unit is not signed on to the network.
MSN missing	No MSN entered.
ISDN no Line	ISDN not connected.
Display Unit o.k.	Display Unit connected.

Tab. 22: Status in the "V24 Unit (V24 Port)" sublevel

### "CAN1 Current" and "CAN2 Current" sublevels

Settings for both CAN bus interfaces can be performed here.

Parameter	Explanation
DescName	Individual description of the associated CAN bus interface.

Tab. 23: Settings in the "CAN1 Current" and "CAN2 Current" sublevels

Parameter	Explanation
SetPtHigh-Alarm	Upper limit for the current value which when overshoot causes an alarm message to be issued.
SetPtHigh-Warning	Upper limit for the current value which when overshoot causes a warning message to be issued.
Hysteresis	Required percentage deviation for under-shooting the limit values for a status change (see section 13 "Glossary").

Tab. 23: Settings in the "CAN1 Current" and "CAN2 Current" sublevels

The following parameters are also displayed for the CAN bus interfaces:

Parameter	Explanation
Value	Currently measured current value.
Status	Current status of the CAN bus interface.

Tab. 24: Displays in the "CAN1 Current" and "CAN2 Current" sublevels

### "Sys Temp" sublevel

Settings for the system temperature of the CMC III PU are performed here.

Parameter	Explanation
DescName	Individual description of the system temperature.

Tab. 25: Settings in the "Sys Temp" sublevel

The following parameters are also displayed for the system temperature:

Parameter	Explanation
Value	Currently measured system temperature.
Status	Current status of the system temperature.

Tab. 26: Displays in the "Sys Temp" sublevel

The status of the system temperature changes when predefined limit temperatures are overshoot or undershot.

### "Supply 24V" sublevel

Settings for the supply voltage of the CMC III PU are performed here. All values apply to the actually used connection (power pack connection or direct connection).

Parameter	Explanation
DescName	Individual description of the supply voltage.

Tab. 27: Settings in the "Supply 24V" sublevel

## 8 Operation

EN

Parameter	Explanation
SetPtHigh-Alarm	Upper limit for the voltage value which when overshoot causes an alarm message to be issued.
SetPtHigh-Warning	Upper limit for the voltage value which when overshoot causes a warning message to be issued.
SetPtLow-Warning	Lower limit for the voltage value which when undershoot causes a warning message to be issued.
SetPtLow-Alarm	Lower limit for the voltage value which when undershoot causes an alarm message to be issued.
Hysteresis	Required percentage deviation for undershooting or overshooting the limit values for a status change (see section 13 "Glossary").

Tab. 27: Settings in the "Supply 24V" sublevel

The following parameters are also displayed for the supply voltage:

Parameter	Explanation
Value	Currently measured voltage value.
Status	Current status of the supply voltage.

Tab. 28: Displays in the "Supply 24V" sublevel

### "Supply 5V0" and "Supply 3V3" sublevels

Settings for the power supply of the USB interface (Supply 5V0) and of the digital inputs (Supply 3V3) at the CMC III PU are performed here.

Parameter	Explanation
DescName	Individual description of the associated supply voltage.

Tab. 29: Settings in the "Supply 5V0" and "Supply 3V3" sublevels

The following parameters are also displayed for the power supplies:

Parameter	Explanation
Value	Currently measured voltage.
Status	Current status of the voltage.

Tab. 30: Displays in the "Supply 5V0" and "Supply 3V3" sublevels

The status of the power supplies changes when predefined limit temperatures are overshoot or undershot.

### 8.3.7 Memory

At the "Memory" level, you can view information concerning the CMC III PU installed external storage media (USB stick or SD card). These storage media may have

maximum 32 GB total storage capacity, must have been formatted in the FAT32 file system and are used for recording charts (see section "8.14" Charts).



Note:

No storage media can be installed for the CMC III PU Compact.

### "USB stick" sublevel

Information about an installed USB stick is displayed.

Parameter	Explanation
DescName	Name of the USB stick. This name is also displayed directly on the "USB stick" sublevel.
Size	Total storage capacity of the USB stick.
Usage	Used storage capacity on the USB stick as percentage of the total storage capacity.
Command	The "Eject" command signs off the USB stick from the system. It can then be removed without any data loss.
Status	Current status of the USB stick. "OK": USB stick installed and operational. "Inactive": USB stick installed but not signed on. "n.a.": no USB stick installed. "High Warn": Warning message when more than 80% of the storage capacity is assigned. "Too High": Alarm message when more than 90% of the storage capacity is assigned.

Tab. 31: Displays in the "USB stick" sublevel

The storage medium must first be signed off from the CMC III PU before the removal of an external storage medium on which chart data is stored. Alternatively, the associated charts can be deactivated manually beforehand (see section 8.14.1 "Configuring a chart").



Note:

If an external storage medium is removed directly for activated charts, this can cause loss of chart data.

### "SD card" sublevel

The same information as in the "USB stick" sublevel for a USB stick is displayed for an installed SD card. Prior to removal from the CMC III PU, an installed SD should also be signed off with the "Eject" command in order to prevent a possible loss of chart data.



### 8.3.8 Webcam

At the "Webcam" level, you can view previously created images or the live stream of an Axis webcam with "VAPIX version 3" API support connected in the network. The appropriate access data for this webcam must have been entered previously (see section 8.6.7 "WebCam").



**Note:**

Because the webcam images are stored on an external storage medium, such as a USB stick or an SD card, no webcam can be used on the "Compact" version of the Processing Unit (see section 8.3.7 "Memory").



**Note:**

A live stream **cannot** be viewed with Internet Explorer. To view the live stream with Opera Browser, the webcam password protection must be revoked.

You have a choice between two display options for the webcam:

- Tree representation: This allows targeted and fast access to individual parameters.
- Graphical display: Graphical information (such as previously created images or a live stream) is displayed.



**Note:**

The switching between the two display options is described in section 8.2.7 "Undock function".

In the tree representation, the following settings for the webcam are made:

Parameter	Explanation
DescName	Specific description of the webcam.
Command	The selection of the "Trigger" manually initiates the creation of the individual images.

Tab. 32: Settings at the "Webcam" level

The following parameters are also displayed for the webcam:

Parameter	Explanation
Status	Current webcam status. "n.a.": No webcam connected or webcam not configured. "OK": A webcam is connected and operational. "Busy": The webcam creates images that were initiated by a trigger.

Tab. 33: Displays at the "Webcam" level

The actual operation and the viewing of images are performed in the graphical representation.

- Select in the first dropdown list whether
    - no image ("None" setting),
    - the live stream ("Live Stream" setting) or
    - a saved image of a specific date should be displayed.
  - If you want to view previously saved images, also select the start time of the sought image in the following dropdown list.
  - Click the **Backward** or **Forward** button to scroll between all individual images that were created by initiating a specific trigger.
  - Select in the last dropdown list the resolution of the image from the specified values.
- For saved images, the following additional information about the trigger is displayed above the image:
- "Image X / Y": The number of the image and the total number of images (e.g. image no. 2 of 4 images).
  - "Trigger caused by": The reason for initiating the trigger (e.g. Task 2).

Previously created images can be downloaded by FTP from the USB stick or the SD card to a PC where they can be viewed and saved.

#### Downloading the image files

- Use preferably the "FileZilla" program to establish an FTP connection between a PC and the CMC III PU (see section 9.1 "Establishing an FTP connection").
- Switch in the "FileZilla" program in the left-hand subwindow (PC) to the folder in which you want to save the image files.
- Switch in the right-hand subwindow (CMC III PU) to the "download" folder and then to the "usb-stick/records/webcam/YYYYMMDD/hhmmss" or "sd-card/records/webcam/YYYYMMDD/hhmmss" subfolder depending on where the image files are saved in accordance with the configuration.  
The "YYYYMMDD" date and the "hhmmss" timestamp represent the start time of the images.
- Right-click the required image file and select the "Download" action.

### 8.4 Configuration tab

The content of the **Configuration** tab depends on which component was selected in the navigation area. The selection of the "Processing Unit" (uppermost node) complete system provides the following configuration options:

- **Network** group frame
  - TCP/IP
  - SNMP
  - HTTP
  - Filetransfer
  - Console

- SMTP
- SMS
- Modbus/TCP
- Server Shutdown
- OPC-UA

## ■ System group frame

- Syslog
- Units and Languages
- Details
- Date/Time
- General
- Firmware Update
- WebCam
- Display

## ■ Security group frame

- Groups
- Users
- Access Configuration
- LDAP
- RADIUS

These configuration options are described in detail in the sections 8.5 "Network" to 8.7 "Security".

When a lower-level real device is selected, e.g. the "CMC III PU" device, the following configuration options are available using the associated icons:

- Configure All Alarms (fig. 40, item 1)
- Configure Device Rights (fig. 40, item 3)



Fig. 40: Icons on the "Configuration" tab

### Key

- 1 "Configure All Alarms" icon
- 2 "Configure Inputs and Outputs" icon
- 3 "Configure Device Rights" icon

When a virtual device is selected, the following configuration options are available:

- Configure Inputs and Outputs (fig. 40, item 2)

These configuration options are described in detail in the sections 8.8 "Device Rights" to 8.10 "Inputs and Outputs".

If the "Processing Unit" complete system is selected, the two buttons in the lower area of the **Configuration** tab can be used to display (left-hand button; fig. 41, item. 1) or print (right-hand button; fig. 41, item. 2) a summary of the current settings.

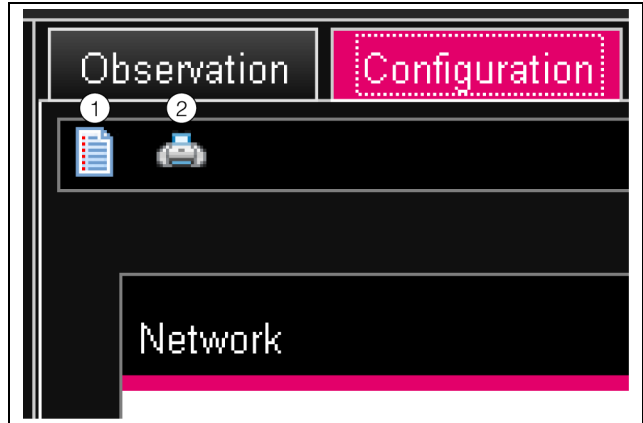


Fig. 41: Summary of the current settings

### Key

- 1 Display
- 2 Pressure preview

## 8.5 Network



### Note:

In its delivered state, all protocols are activated as standard without SSL encryption. For applications with enhanced safety requirements, please note the following:

- Do not operate the system directly on the Internet, but only in internal networks (intranet), and be sure to provide suitable external protection via firewalls.
- Do not use the default passwords; instead, be sure to use secure, long passwords containing numbers, a mix of upper case and lower case letters, symbols and no repetitions. For SNMP, overwrite the default community strings "public".
- Only use secure, encrypted protocols, or deactivate unsecure protocols such as Telnet, FTP etc.

### 8.5.1 TCP/IP Configuration

The basic network settings for the TCP/IP protocol are made in the "TCP/IP Configuration" dialogue, separately for IPv4 and IPv6.

Parameter	Explanation
IP Address	IP address of the CMC III PU.
Netmask	IP subnet mask.
Gateway	IP address of the router.
DHCP	Activate ("DHCPv4" entry) or deactivate ("Manual" entry) DHCP for the automatic assignment of an IP address for a server. No further inputs can be performed in this group frame when DHCP is activated.

Tab. 34: IPv4 Configuration group frame

Parameter	Explanation
IP Address 1	First IPv6 address of the CMC III PU.
IP Address 2	Second IPv6 address of the CMC III PU.
Auto	Displays an IPv6 address obtained automatically from the network.
Link local	Displays the permanently assigned Link Local address of the CMC III PU.
DHCP	Basic settings for IPv6. "Disable": Deactivate IPv6. "Manual": Manual specification of the IPv6 addresses. "Stateless Auto Configuration": Activate the Autoconfiguration (in Linux networks). "DHCPv6": The address is specified using DHCPv6 (in Windows networks).

Tab. 35: IPv6 Configuration group frame

In addition to the basic network settings of the CMC III PU, the address or the server name for as many as two DNS servers for the name resolution can be entered in the **DNS Configuration** group frame.

Parameter	Explanation
Name Server	IP address or name of a server for the name resolution.
DHCP	Activate ("Automatic by DHCP" entry) or deactivate ("Manual" entry) DHCP for the automatic assignment of an IP address of the DNS server. If the DHCP is activated, no further inputs can be performed in this group frame. It must, however, be activated for at least one of the IPv4 or IPv6 DHCP protocols.
PU-Host-name	DNS name of the CMC III PU. If a DNS server is used for the name resolution, the CMC III PU can also be accessed using its name rather than the IP address.

Tab. 36: DNS Configuration group frame

### 8.5.2 SNMP Configuration

The basic settings for the SNMP protocol are made in the "SNMP Configuration" dialogue.

Observe the following notes when making settings for the SNMP protocol:

- The MIB for the CMC III PU is a dynamically generated MIB that can also change when changes are made to the sensor configuration.
- If the CMC III PU is included in an infrastructure management system via the MIB, only the variable name may be used to identify the variables. An identification using the ObjectID is not recommended.



#### Note:

The associated current version of the "OID\_List.cmc3" MIB file can be fetched via an FTP access from the "download/docs" folder for the CMC III PU and saved on a local PC (see section 9.4 "Local saving of supplementary information").

All trap receivers are entered and generally enabled for sending in the **Traps** group frame.



#### Note:

- All Trap Receivers that are not enabled in this group frame ("Use" column) do not receive any traps, even if enabled in the Alarm Configuration.
- All Trap Receivers that are enabled in this group frame must also be enabled in the Alarm Configuration (see section 8.9.3 "Trap Receivers").

Parameter	Explanation
Enable Authentication Trap	Activate or deactivate the trap messages for queries with an invalid community ("Authentication Trap").
Trap Receivers	As many as 16 IP addresses or host names as possible recipients of trap messages. The address of another CMC III PU to which a GSM or ISDN unit is connected can also be specified.
Use	Activate or deactivate individual recipients.

Tab. 37: Traps group frame

You can specify special host addresses in the **Allowed Hosts** group frame that can be used to make contact to the CMC III PU via SNMP.

Parameter	Explanation
Host	As many as 12 IP addresses or names as possible hosts that can make contact to the CMC III PU. If <b>no</b> IP address or host name is entered here, <b>all</b> hosts in the network can make contact.
Use	Activate or deactivate individual hosts.

Tab. 38: Allowed Hosts group frame



#### Note:

Once a host has been entered in the Allowed Hosts group frame, any other host that is not entered there can no longer query values via the SNMP protocol.

## 8 Operation

EN

You can make special specifications for the SNMP protocol in the versions 1 and 2c in the **SNMPv1/v2c** group frame.

Parameter	Explanation
Enable	Activate or deactivate individual hosts.
Read Community	Name of the community with read access to the CMC III PU,
Write Community	Name of the community with write access to the CMC III PU.
Trap Community	The name of the community with the trap receivers. Trap messages can be sent only to members of this community.

Tab. 39: SNMPv1/v2c group frame

You make special specifications for the SNMP protocol in the version 3 in the **SNMPv3** group frame.

Parameter	Explanation
Enable	Activate or deactivate SNMPv3.
SNMPv3 Username	User name for access via SNMP.
SNMPv3 Password	Associated password for access via SNMP. The password must contain at least eight characters.

Tab. 40: SNMPv3 group frame



Note for the use of SNMP management systems:

The status of the CMC III PU "Overload (current too high)" in the MIB is not currently supported.

### 8.5.3 HTTP Configuration

All settings for access via HTTP to the CMC III PU are performed in the "HTTP Configuration" dialogue, subdivided into the standard access **without** SSL and the secure access **with** SSL.

In addition, it can be specified separately for each user whether or not the user has HTTP access to the CMC III PU (see section 8.7.2 "Users").

Parameter	Explanation
Port	Web server port in the CMC III PU.
Enable	Activate or deactivate the access via the HTTP protocol.

Tab. 41: Standard Access (without SSL) group frame

Parameter	Explanation
SSL Port	Secure web server port in the CMC III PU.
Enable	Activate or deactivate the access via the HTTPS protocol.

Tab. 42: Secure Access (with SSL) group frame



Note:

It is not possible to deactivate both accesses, i.e. with and without SSL, via the web user interface. This is possible only via a Telnet connection or a connection via the USB interface.

### 8.5.4 File Transfer Configuration

All settings for access via FTP to the CMC III PU are performed in the "File Transfer Configuration" dialogue (see section 9 "Updates and data backup").

In addition, it can be specified separately for each user whether or not the user has FTP access to the CMC III PU (see section 8.7.2 "Users").

Parameter	Explanation
Port	FTP server port in the CMC III PU.
Enable FTP Server	Activate or deactivate the access via the FTP protocol.
Enable SFTP Server	Displays the access via the SFTP protocol. To ensure access to the CMC III PU is always possible, this access cannot be deactivated.

Tab. 43: "File Transfer Configuration" dialogue

### 8.5.5 Console

All settings for access via Telnet and SSH (Secure Shell) are performed in the "Console Configuration" dialogue (see section 7.3 "Telnet connection").

It can also be specified separately for each user whether or not the user has Telnet or SSH access to the CMC III PU (see section 8.7.2 "Users").

Parameter	Explanation
Port	Port for access via Secure Shell (SSH) to the CMC III PU.
Enable	Activate or deactivate the access via Secure Shell.

Tab. 44: SSH group frame

Parameter	Explanation
Port	Port for access via Telnet to the CMC III PU.

Tab. 45: Telnet group frame

Parameter	Explanation
Enable	Activate or deactivate the access via Telnet.

Tab. 45: Telnet group frame

### 8.5.6 SMTP Configuration

The basic settings for sending mail are made in the "SMTP Configuration" dialogue.

All settings for the mail server are specified in the **Server Parameters** group frame so that the CMC III PU can send an appropriate e-mail in case of pending alarms.

Parameter	Explanation
Server	IP address or name of the mail server used for sending the e-mails.
Port	Mail server port.
Authentication	Setting authentication on the mail server. "No": Authentication deactivated. "Yes": Authentication activated. "Yes / TLS": Authentication activated with additional encrypted transmission of e-mails.
User name	User name for login to the mail server.
Password	Associated password for login to the mail server.
Sender Address	E-mail address of the CMC III PU (sender address).
Reply to Address	Reply address when a recipient answers an e-mail of the CMC III PU.

Tab. 46: Server Parameters group frame

All recipients of e-mail messages are entered and generally enabled for sending in the **Email** group frame.



Note:

- All e-mail text receivers that are not enabled in this group frame ("Use" column) do not receive any e-mails, even if enabled in the Alarm Configuration.
- All e-mail recipients activated in this group frame must also be activated in the Alarm Configuration (see section 8.9.2 "Email Receivers").

Parameter	Explanation
Send device message	Setting as to whether status changes such as "Lost", "Detected", "Changed", etc. should be sent as e-mail (checkbox activated or deactivated).

Tab. 47: Known Receivers group frame

Parameter	Explanation
Email Address	Up to 16 e-mail addresses as possible recipients of e-mails from the CMC III PU.
Use	Activate or deactivate individual recipients.

Tab. 47: Known Receivers group frame

### 8.5.7 SMS Configuration

The basic settings for the sending of SMS messages are made in the "SMS Configuration" dialogue.

All settings for sending via a GSM unit (DK 7320.820 or DK 7030.570) or an ISDN unit (DK 7320.830 or DK 7030.580) are made in the **Service Parameters** group frame.

Parameter	Explanation
GSM SIM-Pin	Four-digit PIN number of the GSM card.
GSM Service Number	SMS service number of the provider (depending on the selected SIM card / provider). Example Deutsche Telekom D1: +491710760000
ISDN MSN	Set the MSN number of the ISDN connection. The number must be entered in the following format: +49/2772/123456
ISDN Pre-Dial Number	Telephone number to obtain an external line. This is necessary when the ISDN unit is connected to a telephone system.
ISDN Command	To register with the network provider, an SMS must be sent once. Example Deutsche Telekom D1: "8888 REGISTER"

Tab. 48: Service Parameters group frame

All recipients of SMS messages are entered and generally enabled for sending in the **Known Receivers** group frame.



Note:

- All SMS receivers that are not enabled in this group frame ("Use" column) cannot receive SMS messages, even if enabled in the Alarm Configuration.
- All SMS recipients activated in this group frame must also be activated in the Alarm Configuration (see section 8.9.4 "SMS Receivers").



Parameter	Explanation
Send device message	Setting as to whether status changes such as "Lost", "Detected", "Changed", etc. should be sent as SMS message. "Disable": No SMS messages are sent for status changes. "Alarms Only": SMS messages are sent only for the critical changes "Detected" and "Lost". "All": SMS messages are sent for all status changes.
Phone Number	Up to 16 telephone numbers as possible recipients of SMS messages from the CMC III PU. The appropriate input format must be observed.
Use	Activate or deactivate individual recipients.
Forward Trap Senders	IP addresses or names of trap senders whose traps are also to be forwarded to the respective receivers of SMS messages. Addresses and names previously entered in the <b>Allowed Trap Senders</b> group frame can be selected from the dropdown list. By clicking the "Ctrl" button, multiple trap senders can be selected and then listed separated with commas.

Tab. 49: Known Receivers group frame

**Note:**

Selecting the "All" entry in the "Send device message" field may incur high costs because a separate SMS message is sent for every status change.

A CMC III PU can receive traps from other CMC III PUs and then forward them as SMS via the connected GSM or ISDN unit. This has the advantage that a unit for sending SMS messages is not required on every CMC III PU. The traps to be forwarded are then specified in the "Allowed Trap Senders" group frame.

Parameter	Explanation
Host	Up to five IP addresses or host names of CMC III PUs whose traps are to be forwarded.

Tab. 50: Allowed Trap Senders group frame

The SNMP configuration of the CMC III PU whose traps are to be forwarded must also be amended (see section 8.5.2 "SNMP Configuration").

**Note:**

The status of the GSM/ISDN unit can be obtained on the website in the "V24 Unit (V24 Port)" sub-level (see section 8.3.6 "System") or via Telnet/SSH/USB on the "Info Page".

### 8.5.8 Modbus/TCP Configuration

**Note:**

- The CMC III Processing Unit supports only the "Modbus/TCP" protocol.
- The list of all variables that can be queried via Modbus can be fetched as the "ModbusMap.cmc3" file via an FTP access from the "download/docs" folder of the CMC III PU and stored on a local PC (see section 9.4 "Local saving of supplementary information").

The "Modbus/TCP Configuration" dialogue is used to make the basic settings for the Modbus/TCP protocol. The following settings are made in the **Service Parameters** group frame.

Parameter	Explanation
Enable	Enable or disable access via the Modbus/TCP protocol.
Port	Port of the Modbus server in the CMC III PU. Port 520 is set as default.

Tab. 51: Service Parameters group frame

The special host addresses defined in the **Allowed Hosts** group frame can be used to make contact to the CMC III PU using the Modbus/TCP protocol.

Parameter	Explanation
Host	Up to 12 IP addresses or names of possible hosts that can make contact to the CMC III PU. If <b>no</b> host is entered here, <b>all</b> hosts in the network can make the connection.
Access Rights	Authorisation of the associated host for access via Modbus/TCP. Possible settings are read-only access ("read" setting) or read and write access ("read/write" setting). If access via Modbus/TCP is generally disabled, this setting has no effect.

Tab. 52: Allowed Hosts group frame

**Note:**

Once a host has been entered in the **Allowed Hosts** group frame, any other host not entered there can no longer query values via the Modbus protocol.

### 8.5.9 Server Shutdown Configuration

The basic settings for the orderly download of servers via a task are made in the "Server Shutdown Configuration" dialogue (see section 8.12.3 "Selection of an action"). To do this, a licence of the RCCMD software (7857.421) must be installed on each of these servers.

Parameter	Explanation
Name	Name of the server.
IP Address	The IP address of the server to be downloaded.
Port	Port on which the server receives the RC-CMD signal. By default, port 6003 is set.
Delay	The time for which the alarm must be present in order to start the shutdown of the associated server.
Use	Activate or deactivate individual servers.

Tab. 53: Servers group frame

**Note:**

- All servers not enabled in this group frame ("Use" column) are not shutdown even if enabled in a task.
- All servers activated in this dialogue must also be activated in the associated task (see section 8.12.3 "Selection of an action").

**8.5.10 OPC-UA Configuration**

The OPC-UA protocol is a network management protocol that can be used in control room technology. This protocol allows the sensor data of the **Observation** tab to be requested. It does not, however, provide any access to the **Configuration**, **Logging** and **Tasks** tabs. The "OPC-UA Configuration" dialogue is used to make the basic settings for this communications protocol.

Parameter	Explanation
Enable	Enable or disable access via the OPC-UA protocol.
Port	Port of the OPC-UA server in the CMC III PU. By default, port 4840 is set.

Tab. 54: "OPC-UA Configuration" dialogue

**8.6 System****8.6.1 Syslog**

The basic settings for sending log messages to the Syslog server are made in the "Syslog Configuration" dialogue.

Parameter	Explanation
Server 1	The IP address or name of a server to which alarm and event logs are sent.
Server 2	The IP address or name of a second server to which alarm and event logs are sent.

Tab. 55: "Syslog Configuration" dialogue

Parameter	Explanation
Facility	A digit between 0 and 7 (inclusive) for prioritising the sent logs.
Enable Syslog	Activate or deactivate the sending of log messages.

Tab. 55: "Syslog Configuration" dialogue

**8.6.2 Units and Languages**

The "Units and Language Configuration" dialogue can be used in the **Units** group frame to switch the unit for all temperature values between "Celsius" and "Fahrenheit".

Parameter	Explanation
Temperature Format	Select the desired temperature unit ("Celsius" or "Fahrenheit").

Tab. 56: Units group frame

- After switching the unit, check all temperature setting values (e.g. for the integrated temperature sensor, for virtual devices).

The language for the website of the CMC III PU can be selected in the **Language** group frame.

- Select the required language, e.g. German, from the pull-down menu.
- Then sign off from the CMC III PU website (see section 8.2.8 "Logout and changing the password") and sign on again.

Although the names of the levels and the parameters continue to be displayed in English when the language is switched, tooltips can be displayed in the associated selected language.

- Place the mouse cursor on the **Observation** tab, e.g. from the "Device" level, below the "CMCIII-PU" main level.

A tooltip with the "Device" translation appears.

**8.6.3 Details**

Detailed information concerning the CMC III PU is displayed in the "Details Configuration" dialogue. Individual parameters can be used to differentiate between multiple installations.

Parameter	Explanation
Name	Name of the CMC III PU (for the more exact identification).
Location	Installation location of the CMC III PU (for the more exact identification).
Contact	Contact address, typically an e-mail address.
Hardware Revision	Display of the CMC III PU hardware version.

Tab. 57: "Details Configuration" dialogue

## 8 Operation

EN

Parameter	Explanation
Software Revision	Display of the CMC III PU software version.
Serial Number	Display of the CMC III PU serial number.

Tab. 57: "Details Configuration" dialogue

### 8.6.4 Date/Time

The system date and time of the CMC III PU can be changed in the "Date and Time Configuration" dialogue.

Parameter	Explanation
Time Zone	Selection of the time zone. The time zone is required when an NTP server is used.

Tab. 58: Time Zone group frame

Parameter	Explanation
Time	Current time of day.
Date	Current date.

Tab. 59: Date/Time group frame



Note:

Changing the system date or the system time can cause data loss (see section 8.14 "Charts").

The Network Time Protocol can be activated in the **NTP** group frame. The associated NTP server can also be defined here. These settings can be used to synchronize the local date and time setting of the CMC III PU with a server.

Parameter	Explanation
Use NTP	Activate or deactivate the NTP function for the time and date synchronisation with an NTP server.
NTP Server 1	IP address or name of the primary NTP server.
NTP Server 2	IP address or name of the secondary NTP server.

Tab. 60: NTP group frame

### 8.6.5 General

The basic settings for the CMC III PU are made in the "General Configuration" dialogue.

Parameter	Explanation
Enable Beeper	Activate or deactivate the beeper installed in the CMC III PU.

Tab. 61: Beeper group frame



Note:

If the integrated beeper is deactivated, it cannot be activated for individual alarm messages in the Alarm Configuration.

The basic settings for the alarm relay are specified in the **Alarm Relay** group frame.

Parameter	Explanation
Alarm Relay Behavior	Behaviour of the alarm relay on occurrence of an alarm. Possible settings are the opening of the contact ("Open on Alarm" setting) or the closing of the contact ("Close on Alarm" setting). Alternatively, the alarm relay can also be deactivated completely ("Disabled" setting). If the alarm relay is disabled, this relay contact, like every other variable, can be set manually via the website, SNMP or tasks.
Switch on	Switch the alarm relay only for warnings, only for alarms or for warnings and alarms.
Quit Alarm Relay	Reset the alarm relay only after an alarm has been confirmed.
Switch on Device Errors	Activate or deactivate the alarm relay for configuration changes on the CMC III PU.

Tab. 62: Alarm Relay group frame



Note:

If the alarm relay is deactivated, it cannot be activated for individual alarm messages in the Alarm Configuration.

### 8.6.6 Firmware update



Note:

Observe all advanced notes for performing an update in section 9.2 "Perform an update".

The "Firmware Update" dialogue can be used to update the CMC III PU directly from the website. This is also possible with a USB storage medium (see section 9.2.3 "Update via USB") or via an (S)FTP connection (see section 9.2.4 "Update via FTP or SFTP").

- Click the diskette icon in the "Firmware Update" dialogue.
- Navigate in the file selection dialogue to the new firmware file to be installed with the "tar" extension and select it.

The file name is displayed in the dialogue.

- Click the **Start Update** button.
- The update process starts automatically after a few seconds. This is indicated with a red flashing of the multi-



LED (so-called heartbeat, alternately long and short) on the CMC III PU.

### 8.6.7 WebCam

The access to an Axis webcam available in the network can be configured in the "WebCam Configuration" dialogue (VAPIX version 3). The webcam allows viewing of a live stream from the web user interface for the recording or saving of individual images for each task (see section 8.3.8 "Webcam").



Note:

Because the webcam images are stored on an external storage medium, such as a USB stick or an SD card, no webcam can be used on the "Compact" version of the Processing Unit (see section 8.3.7 "Memory").



Note:

A live stream **cannot** be viewed with Internet Explorer. To view the live stream with Opera Browser, the webcam password protection must be revoked.

The basic settings for the webcam are made in the **Network** group frame.

Parameter	Explanation
Enable	Enable or disable access to the webcam.
Host	IP address or host name of the webcam.
Username	User name for access to the webcam.
Password	Associated password for access to the webcam.

Tab. 63: Network group frame

The settings for creating individual images are made in the **Snapshot** group frame.

Parameter	Explanation
Interval	The interval in seconds between two images.
Number of Images	Total number of images created when a trigger is initiated.
Destination	Selection of the external storage medium on which the images are stored.

Tab. 64: Snapshot group frame



Note:

A trigger for creating the individual images can, for example, be initiated via tasks or manually via the website.

### 8.6.8 Display

The representation (dashboard) displayed on a mobile terminal is specified in the **Mobile Phone** group frame in the "Display Configuration" dialogue (see section 8.15 "Dashboards").

Parameter	Explanation
Dashboard	Selection of the dashboard displayed for the login with a mobile terminal.

Tab. 65: Mobile Phone group frame

The representation of a dashboard on a mobile terminal normally differs from the configured representation. The title lines of the individual components of the dashboard are initially displayed stacked on a mobile terminal. Clicking a title line displays the associated content of the component (e.g. a variable list).



Note:

Before selecting a dashboard for a mobile terminal, ensure that the dashboard has been configured appropriately.

## 8.7 Security

All basic settings for user groups and individual users can be specified in the **Security** group frame. These settings can be changed for individual components. If the "default" standard setting is used for the individual components, these values will be used.

### 8.7.1 Groups

Up to 32 different user groups can be defined in the "Groups Configuration" dialogue. The 33 users who can be created can be assigned to these groups in the "Users" dialogue (see section 8.7.2 "Users").

Parameter	Explanation
Name	Name of the user group.
Description	(Detailed) Description of the user group.
Initial Data Rights	Authorisation of the user group with regard to the parameters of the "Data" type of the devices (see section 8.8.2 "Data types"). Possible settings are no rights ("no" setting), read-only rights ("read" setting) as well as read and write rights ("read/write" setting). The authorisations set here are transferred automatically for newly signed-on devices.

Tab. 66: "Groups Configuration" dialogue

Parameter	Explanation
Initial Config Rights	Authorisation of the user group with regard to the parameters of the "Config" type of the devices (see section 8.8.2 "Data types"). Possible settings are no configuration rights ("no" setting), configuration parameters can only be read ("read" setting) and parameters can be changed ("read/write" setting). The authorisations set here are transferred automatically for newly signed-on devices.
Admin	Show or hide the <b>Configuration</b> and <b>Tasks</b> tabs. The general information for the sensors can be changed under the "Device" item only as administrator.
Auto Logout [sec]	The duration after which a user of this group with no activity is automatically logged out from the CMC III PU. For the set value of "0", no automatic sign-off is performed for this user.

Tab. 66: "Groups Configuration" dialogue

**Note:**

The duration specified for the "Auto Logout" parameter does not apply when a user logs in directly on a dashboard. The user remains logged in to CMC III PU while the dashboard is open.

For restricted user groups, it is desirable to use the setting in the "admin" column to prevent access to the **Configuration** and **Tasks** tabs (checkbox is deactivated). Otherwise there is the possibility that users reassign their own rights, change the settings for tasks or create new tasks.

**Note:**

The "admin" group cannot generally be changed.

If subsequent changes are made in the "Initial Data Rights" or "Initial Config Rights" columns, after clicking the "Save" button in the "Groups Configuration" dialogue, the "Initial Rights Changed" dialogue opens with a prompt.

- Click the **Yes** button to transfer the changes made in the access authorisation to the available sensors.
- Click the **No** button to retain the current access authorisations for the sensors and their parameters. The newly set access rights are then used only for sensors signed-on in future.

### 8.7.2 Users

Up to 33 different users can be defined in the "Users Configuration" dialogue.

Parameter	Explanation
Enabled	Activate or deactivate a user.
User	User name for login to the CMC III PU.
Group	User group to which the user belongs.
File Transfer	User authorisation for access via FTP. Possible settings are "no" access, "read" access and "read/write" access. If access via FTP is generally deactivated (see section 8.5.4 "File Transfer Configuration"), this setting has no effect.
HTTP	User authorisation for access via HTTP. For activated checkbox, access via HTTP is possible; for deactivated checkbox, access via HTTP is not possible. If access via HTTP(S) is generally deactivated (see section 8.5.3 "HTTP Configuration"), this setting has no effect.
Console	User authorisation for access via Telnet or SSH. For activated checkbox, access via Telnet or SSH is possible; for deactivated checkbox, access via Telnet and SSH is not possible. If access via Telnet and SSH is generally deactivated (see section 8.5.5 "Console"), this setting has no effect.

Tab. 67: "Users Configuration" dialogue

**Note:**

If the access type via a specific protocol is generally deactivated, it cannot be activated for an individual user.

A user with the appropriate access rights can use the **Set Password** button to (re)assign a password for another user. To do this, the desired user must be selected beforehand, otherwise the button is inactive.

In addition, users can change their own password after login (see section 8.2.8 "Logout and changing the password").

### 8.7.3 Access Configuration

The stored access codes and transponder cards are displayed in the "Access Configuration" dialogue. The **Edit**, **Add** and **Delete** buttons are used to change existing entries, create new entries and delete existing entries, respectively. The detailed procedure is described in the assembly, installation and users guide for the CMC III CAN-Bus Access (DK 7030.200).

### 8.7.4 LDAP Configuration

The "LDAP Configuration" dialogue can be used to transfer the user administration from an LDAP server. If the access to an LDAP server is configured and activated, during the login, the user data is always checked first on the local user administration in the CMC III PU. If the

user data is not found there, the LDAP server is then searched.

The basic settings for the LDAP server are specified in the **Server** group frame.

Parameter	Explanation
Enable LDAP	Enable or disable access to the LDAP server.
Hostname	The IP address or name of the LDAP server.
Bind DN	The Distinguished Name for login on the LDAP server.
Bind PW	The password for authentication on the LDAP server.

Tab. 68: Server group frame

The settings for requesting the group frame are specified in the **Group Search** group frame.

Parameter	Explanation
Search Filter	The filter for requesting the group names on the LDAP server. The expression "(&(objectClass=group)(member=%U))" is stored as standard.
Base DN	The root directory in which the information for the group administration is stored.
Attribute	The attributes returned from the LDAP server for the request.

Tab. 69: Group search group frame



Note:

"%U" can be used as placeholder for the LDAP user in the "Search Filter" mentioned above.

The settings for requesting the user names are specified in the **User Search** group frame.

Parameter	Explanation
Search Filter	The filter for requesting the user names on the LDAP server. The expression "(&(objectClass=user)(sAMAccountName=%L))" is stored as standard.
Base DN	The root directory in which the information for the user administration is stored.
Attribute	The attributes returned from the LDAP server for the request.

Tab. 70: User search group frame



Note:

"%L" can be used as placeholder for the login name in the "Search Filter" mentioned above.

Whereas the users stored in the LDAP server do not need to exist in the local user administration of the CMC III PU, the groups must also be created locally. To avoid needing to use the same group names in the LDAP server and in the CMC III PU, the associated names on the LDAP server can be assigned to the local group names of the CMC III PU in the **Group Alias Configuration** group frame.

Parameter	Explanation
Group Name	The name of the group in the CMC III PU.
LDAP Alias	The associated name of the group in the LDAP server.

Tab. 71: Group Alias Configuration group frame

### 8.7.5 Radius Configuration

The "Radius Configuration" dialogue performs the user administration for a Radius server. If the access to a Radius server is configured and enabled, during the login, the user data is always checked first on the Radius server. If the user data is not found there, the local user administration in the CMC III PU is then searched.

The basic settings for the Radius server are specified in the **Server** group frame.

Parameter	Explanation
Enable Radius	Enable or disable access to the Radius server.
Hostname	The IP address or name of the Radius server.
Port	The port of the Radius server. Port 1812 is set as default.
Secret	The password for authentication on the Radius server.
Authentication Method	Deployed encryption method.

Tab. 72: Server group frame

The rights for a user stored on the Radius server for login to the CMC III PU are specified in the **Group Search** group frame.

Parameter	Explanation
Group Selection	Assignment of the user to a group. "Manual": Each user is logged in with the user group selected in the "Group Name" field. "By Server Attribute": The user is logged in with the user group stored for the "cmc-group" attribute in the Radius server. This user group must also exist in the CMC III PU.
Group Name	The selection of the associated user group for all users for login via a Radius server and a manual assignment to a user group ("Manual" setting).

Tab. 73: Group Search group frame

### 8.8 Device Rights

After selection of the CMCIII-PU component from the "Real Devices" category in the navigation area, you can specify the access rights for individual user groups on the **Configuration** tab.

- Select the "CMCIII-PU" entry in the navigation area.
- Select the **Configuration** tab in the right-hand area of the screen page.

The various parameters for the currently selected component are displayed in the list view of the **Configuration** tab. The access rights of these parameters can be customised by the operator.

- Click the "Configure Device Rights" icon.

The "Device Rights Configuration" dialogue opens.

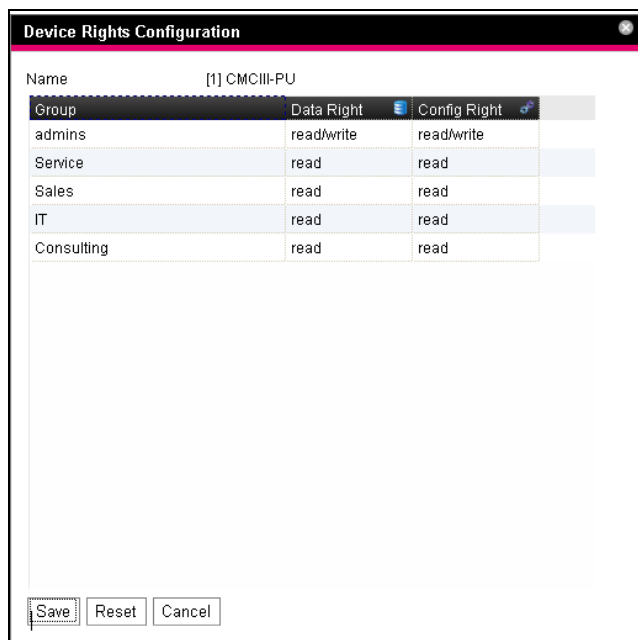


Fig. 42: "Device Rights Configuration" dialogue

The current device for which the "Device Rights Configuration" is performed is displayed above the table. The names of the user groups are listed in the "Group" column.

Parameter	Explanation
Group	The names of all user groups created previously (see section 8.7.1 "Groups").

Tab. 74: "Group" column

The access to the parameters of the "Data" device type is specified in the "Data Right" column on the **Observation** tab. The assignment of the parameters to the "Data" type can be obtained on the **Configuration** tab from the "database" icon prefixed to the associated parameter (see section 8.8.2 "Data types"). The following settings can be selected:

Parameter	Explanation
no	Members of the group have neither read nor write access to parameters of the "Data" type.
read	Members of the group have read access to parameters of the "Data" type.
read/write	Members of the group have read and write access to parameters of the "Data" type. This setting acts only when the software is permitted to change parameters of the "Data" type.

Tab. 75: "Data Right" column

The access to the parameters of the "Config" type of the device is specified in the "Config Right" column on the **Observation** tab. The assignment of the parameters to the "Config" type can be obtained on the **Configuration** tab from the "gearwheel" icon prefixed to the associated parameter (see section 8.8.2 "Data types"). The following settings can be selected:

Parameter	Explanation
no	Members of the group have neither read nor write access to the limit values. If the "no" entry is also selected in the "Data Right" column, only the "Device" level can be viewed. If some other entry is selected in the "Data Right" column, the "Value" and "Status" values can be viewed in the other levels.
read	Members of the group have read access to the limit values. This means, they can view the temperature limit values for alarms and warnings, for example.
read/write	Members of the group have read and write access to the limit values. This means, they can view and change the temperature limit values for alarms and warnings, for example.

Tab. 76: "Config Right" column

If a field does not have any caption, the "Device Rights" sublevels are different (see section 8.8.1 "Inheritance of the Device Rights").



**Note:**

Such defined access rights always apply only for access to the associated component via the website. Access rights at door handles are controlled by the general user administration and the Access Configuration (see section 8.7.3 "Access Configuration").

### 8.8.1 Inheritance of the Device Rights

The rights assignment for the individual sensors is constructed parallel to the representation on the **Observation** tab. A change to a node point is also transferred automatically to all variables subordinate to this node point.

- Select the "CMCIII-PU" entry in the navigation area.
- Select the **Configuration** tab in the right-hand area of the screen page.
- Click the "Device Rights" icon suffixed to the "CMCIII-PU" entry.

The "Device Rights Configuration" dialogue opens (fig. 42).

If a change is made in this dialogue and a different access authorisation to the variables assigned to a user group, this user group also has the same access rights for all variables subordinate to the "CMCIII-PU" node point.

If a node point has a further node point with different subordinate variables, the inheritance also acts here. A configuration change is transferred automatically to the second node point and the subordinate variables there. If, however, the second node point is changed, only the access rights for those variables subordinate to this node point change.

If an individual subordinate parameter is customised, it can be selected and edited individually.

- Click the "Plus" icon to open the complete structure.
- Click the "Device Rights" icon directly behind the variable to be edited.

If the access rights of the individual parameters for a node point differ in the "Device Rights Configuration" dialogue, an empty field is shown here in the "Device Rights Configuration" of the complete sensor. Changing this empty field causes the settings there to be transferred for all subordinate parameters.

### 8.8.2 Data types

The parameters of the sensors are differentiated into two types:

- Data
- Config

A variable of the "Data" type provides status information and can be changed only for those sensors whose software permits this. A variable of the "Config" type contains configuration information and can be changed by a user when the software permits this.

An icon indicates the associated type. Parameters of the "Data" type are represented as a "Database" icon (with stacked blue cylinders). Parameters of the "Config" type are represented as two diagonal gearwheels.



Fig. 43: Icons of the data types

**Key**

- 1 "Gearwheel" icon ("Config" data type)
- 2 "Database" icon ("Data" data type)

The associated icons are displayed when a sensor is selected on the **Configuration** tab in the navigation area and this expanded down to the lowest level and also in the "Device Rights Configuration" dialogue (fig. 42, item 1). The icons emphasise the assignment to the "Data" and "Config" data types.

### 8.9 Alarm Configuration

After selection of the "CMCIII-PU" entry under "Real Device" or another component under "Real Device" or under "Virtual Device", you can individually specify the alarm notification for each measured value on the **Configuration** tab.

- Select the "CMCIII-PU" entry in the navigation area.
- Click the **Configuration** tab in the right-hand part of the screen.
- Click the "Configure All Alarms" icon.

The "Alarm Configuration" dialogue appears.

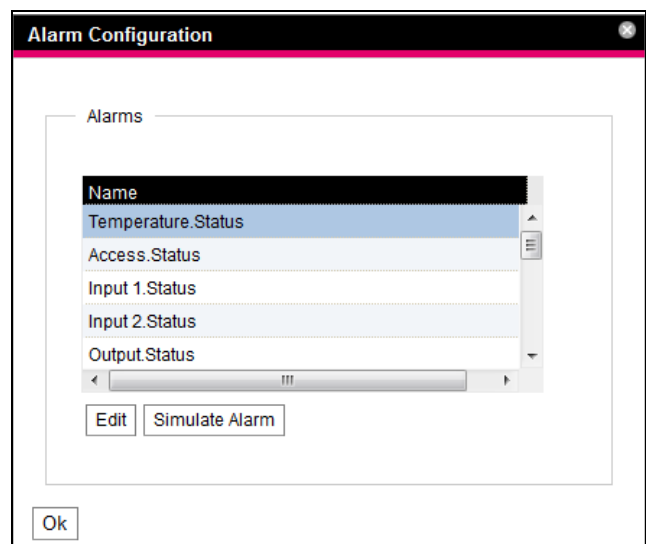


Fig. 44: "Alarm Configuration" dialogue

- In the listing, click the row of the sensor or the input/output for which you want to specify the CMC III PU behaviour.
- Click the **Edit** button.



## 8 Operation

EN

When the temperature sensor is selected, for example, the "Alarm Configuration: Temperature.Status" dialogue appears.



Note:

The dialogue for the access sensor as well as the inputs and outputs has a similar form.

### 8.9.1 Notifications

You can make settings in the **Notifications** group frame how a pending alarm should be output.

Parameter	Explanation
Use Beeper	Activate or deactivate the beeper when the alarm occurs.
Use Relay	Activate or deactivate the alarm relay.
Acknowledge Required	If this setting is activated, the alarm message remains displayed until it has been acknowledged. This means, even when the cause of the alarm is no longer present, e.g. when in the meantime the temperature has undershot the switching point, the "Alarm" status remains set. Only the transition to the "OK" status is blocked, i.e. other alarms as well as the transition to the "Warning" status are also displayed for activated setting.
Delay	Delay time between measured value overshoot and switching to the alarm or warning status. This delay time does not apply to the switching action to the "OK" status.

Tab. 77: Notifications group frame



Note:

If the integrated beeper or the alarm relay is generally deactivated, the beeper or the alarm relay cannot be activated for individual alarm messages (see section 8.6.5 "General").

### 8.9.2 Email Receivers

You can make settings in the **Email Receivers** group frame to which recipients an e-mail should be sent when an alarm occurs.

All appropriate recipients created previously are displayed (see section 8.5.6 "SMTP Configuration"). These recipients are **deactivated** by default.

Parameter	Explanation
Email Address	E-mail addresses created in the CMC III PU configuration.
Use	Activate or deactivate the associated recipient.

Tab. 78: Email Receivers group frame



Note:

If an e-mail receiver was generally disabled previously, although it may be enabled for individual alarm messages, e-mails are still not sent to this receiver (see section 8.5.6 "SMTP Configuration").

### 8.9.3 Trap Receivers

You can make settings in the **Trap Receivers** group frame to which recipients a trap message should be sent.

All appropriate recipients created previously are displayed (see section 8.5.2 "SNMP Configuration"). These recipients are **activated** by default.

Parameter	Explanation
Trap Host	The trap receiver created in the CMC III PU configuration.
Use	Activate or deactivate the associated recipient.

Tab. 79: Trap Receivers group frame



Note:

If a trap receiver was generally disabled previously, although it may be enabled for individual alarm messages, traps are still not sent to this receiver (see section 8.5.2 "SNMP Configuration").

### 8.9.4 SMS Receivers

You can make settings in the **SMS Receivers** group frame to which recipients an SMS message should be sent.

All appropriate recipients created previously are displayed (see section 8.5.7 "SMS Configuration"). These recipients are **deactivated** by default.

Parameter	Explanation
SMS Phone Number	The telephone numbers created in the CMC III PU configuration.
Use	Activate or deactivate the associated recipient.

Tab. 80: SMS Receivers group frame



Note:

If an SMS receiver was generally disabled previously, although it may be enabled for individual alarm messages, SMS messages are still not sent to this receiver (see section 8.5.7 "SMS Configuration").

### 8.9.5 Alarm simulation

After completion of an alarm configuration, the notifications set in the "Alarm Configuration" dialogue (fig. 44) can be checked. This is done by simulating a pending alarm, such as by testing the alarm with the actual stored limit values.

- Click in the listing the line of the sensor or the input/output for which you want to simulate the alarm behaviour.
- Click the **Simulate Alarm** button.  
If the temperature sensor is selected, for example, the "Simulate Alarm: Temperature.Status" dialogue opens.



Note:

The dialogue for the access sensor and the input/outputs has a similar structure.

- You specify in this dialogue which type of alarm and for how long is to be simulated.

Parameter	Explanation
Duration	The duration for which the alarm should be simulated.
Simulation Value	The status to be simulated. The possible values depend on the type of the selected sensor or input/output.

Tab. 81: "Simulate Alarm" dialogue

- Click the **OK** button to simulate the alarm and so check all settings (e.g. the correct sending of an e-mail to all associated receivers).



Note:

The "Alarm simulation" entry created in the log information allows the simulation to be differentiated from an actual alarm.

- After expiration of the interval for a simulated alarm, you can simulate further alarms similarly.



Note:

Only one alarm simulation can be active concurrently.

### 8.10 Inputs and Outputs

If a "Virtual Device" is selected in the navigation area (see section 8.13 "Virtual Devices"), an additional "Configure Inputs and Outputs" icon appears on the **Configuration** tab. In addition to the configuration of the access rights and the behaviour on occurrence of an alarm, the inputs and outputs must also be configured for a virtual device.

- Select the desired "Virtual Device" in the navigation area.

- Click the **Configuration** tab in the right-hand area of the screen.
- Click the "Configure Inputs and Outputs" icon.  
The "Input/Output Configuration" dialogue appears.

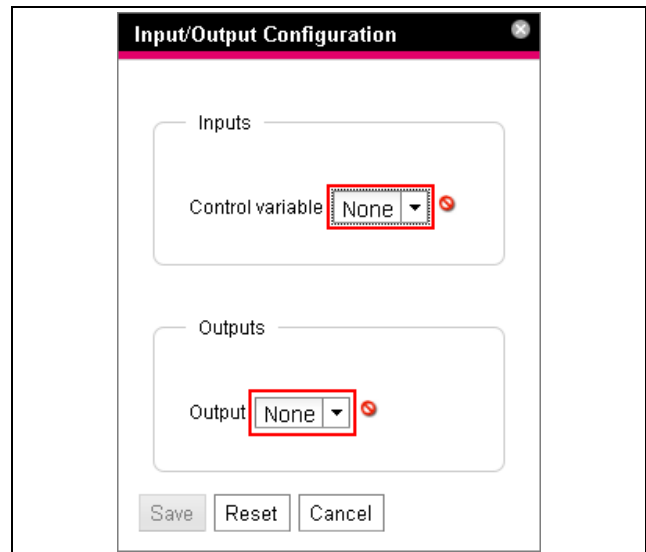


Fig. 45: "Input/Output Configuration" dialogue

For a virtual device of the type "Two-level controller":

- Select the desired variable in the "Control Variable" dropdown list, e.g. "CMCIII-PU.Access.Value" for the integrated access sensor in the CMC III PU.

Parameter	Explanation
Control Variable	Variable whose value should be monitored.

Tab. 82: Inputs group frame

The **Inputs** group frame does not exist for a virtual device of the "Access Controller" type.

- Select in the "Output" dropdown list the output that for a specified change of the variable value defined above should be switched.

Parameter	Explanation
Output	Output to be switched.

Tab. 83: Outputs group frame



Note:

The alarm relay integrated in the CMC III PU cannot be defined as output.

The device list is then reloaded automatically and you can further configure the virtual device (see section 8.13 "Virtual Devices").

### 8.11 Logging

The log information of the CMC III PU can be viewed on the **Logging** tab. Because this log information is generally valid, the information displayed on the **Logging** tab



## 8 Operation

EN

is independent of the component selected in the left-hand area of the screen.



Note:

The associated current version of the "Logging.cmc3" log file can be fetched via an FTP access from the "download" folder of the CMC III PU and stored on a local PC (see section 9.4 "Local saving of supplementary information").

- Click the **Logging** tab in the right-hand part of the screen.

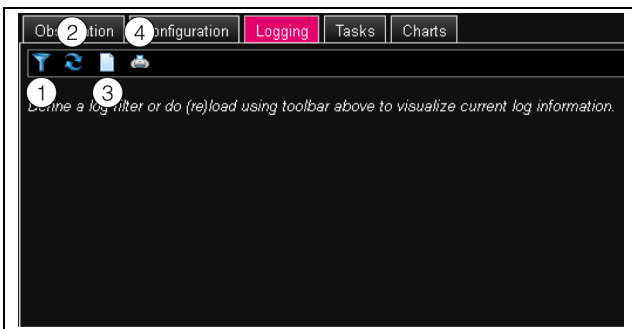


Fig. 46: Logging tab

### Key

- 1 Define a filter
- 2 Reload the information
- 3 Delete the display
- 4 Printing the display

A message is initially displayed that you can either

- Define a filter in order to display only selected events or
- Load the complete history into the display with all events.

The symbols in the toolbar below the tabs can be used for this purpose.

### 8.11.1 Defining a filter

To receive only a specific section from all messages, you can define a filter.

- Click the first symbol on the left (fig. 46, item 1).

The "Set Logging Filter" dialogue appears.

The following parameters are available:

Parameter	Explanation
Date	Messages of a specific date.
Type	Error type. The selection of the "Alarm" causes, for example only alarm messages but no other messages from devices to be displayed.
Device Index	Messages of a specific device. The (internal) number of the device assigned during the initial connection is selected.

Tab. 84: Settings in the "Set Logging Filter" dialogue

Parameter	Explanation
User	Messages initiated by a specific user. For example, messages when the user logs in or out are displayed.
IP Address	Messages that can be assigned to a specific IP address. All addresses used to access the CMC III PU are listed.

Tab. 84: Settings in the "Set Logging Filter" dialogue

The first entry in each column is "All items". When you select this entry, the entries in the associated column are **not** filtered.

Example: All information messages on 19.01.2012

- Select the above-mentioned date "19.01.2012" in the "Date" column.
- Select the "Info" entry in the "Type" column.
- Select the "All items" entry in the three following columns.
- Click the **OK** button.

The filter is used and only those messages that satisfy the above-mentioned criterion are displayed in the list.



Note:

Several entries can be marked in the individual columns by keeping the "Ctrl" key pressed.

### 8.11.2 Refreshing the view

After the definition of a filter, all messages stored up to this time that satisfy the filter criterion are displayed. No subsequent automatic refresh of the display occurs when new messages arrive, i.e the display must be refreshed manually.

- Click the second symbol on the left (fig. 46, item 2). It takes a moment until all events have been reloaded from the CMC III PU. The refreshed list with all events is then displayed.



Note:

After each refresh, only those messages that satisfy the currently stored filter criterion are displayed.

### 8.11.3 Printing the view

The complete history or the results selected using a filter can be printed.

- If required, first define a suitable filter in order to display only a subset of all results (see section 8.11.1 "Defining a filter").
- Click the fourth icon from the left (fig. 46, item 4). It takes a moment until all events have been reloaded from the CMC III PU. The updated list with all events is displayed in a separate window and a "print" dialogue opens.
- Print the view or save it as PDF file.

### 8.11.4 Delete the display

You can delete the current display at any time.

- Click the third symbol on the left (fig. 46, item 3).

All entries from the display are deleted and the same message as for selection of the **Logging** tab appears again.



Note:

The entries are removed only from the display. The log file remains unchanged.

## 8.12 Tasks

The tasks can be used to query the status of all connected components and logically link them with each other. Date values can also be included in the links. Different actions can be initiated for a status change of the Trigger Expression (see section 8.12.2 "Specifying the trigger expression"). For example the occurrence of an alarm message of the integrated access sensors on a specific weekday causes an appropriate e-mail to be sent. The current status of a task cannot be queried via SNMP. This is possible only for a virtual device (see section 8.13 "Virtual Devices").

Because tasks are generally valid, the information displayed on the **Tasks** tab is independent of the components selected in the left-hand area of the screen.

### 8.12.1 Tasks tab

The following information for as many as 16 different tasks is displayed on this tab:

Parameter	Explanation
ID	Unique ID of the task. This ID is defined by the system and cannot be changed.
Name	Designation of the task.
Description	(Detailed) Description of the task.
Enabled	Display "Yes" or "No" as to whether the appropriate task is activated, i.e. the associated action is performed (or not).

Tab. 85: Tasks tab

The settings of the individual tasks can be changed after clicking the **Edit** button in the "Task Configuration" dialogue.

### 8.12.2 Specifying the trigger expression

- Click the **Edit** button of the task whose configuration is to be changed or created.

The "Task Configuration" dialogue appears.

Fig. 47: "Task Configuration" dialogue

### Details group frame

Make the following settings in the left-hand **Details** group frame:

Parameter	Explanation
Enable	Activate or deactivate the task.
Name	Designation of the task.
Description	(Detailed) Description of the task.
Delay	Delay time of a task in seconds. If the value "0" is entered here, no delay occurs irrespective of the selected "Delay Mode".
Delay Mode	Type of the delay
Dropdown list	Select an action to be performed when the associated expression is "true". Alternatively, a parameter value can also be selected.
Setup	Definition of the action to be performed.

Tab. 86: Details group frame

### Delaying a task

A task can also be controlled with a delay time. This delay time is specified with the "Delay [s]" parameter and can be selected as required in the range 0 to 9999 seconds.

The delay time is configured using the dropdown list of the "Delay Mode" parameter:

Parameter	Explanation
Switch On Delay	Switch-on delay. If the associated expression evaluates "true", the system first waits the defined "delay" time before the set action is performed.
Switch Off Delay	Switch-off delay. If the associated expression evaluates "true", the set action is performed immediately. If a status changes and the expression evaluates "false" again, the system waits the defined "delay" time before the set action is undone.

Tab. 87: Selection list for the delay of a task

Parameter	Explanation
Pulse	Pulse. If the associated expression evaluates "true", the system performs the set action for the duration of the defined "delay" time. After expiration of this time, the action is stopped and reset to the associated origin.

Tab. 87: Selection list for the delay of a task

**Note:**

In general, the selected action is performed only when the "Trigger Expression" is always true after expiration of the delay time. If, however, a value changes during the delay time and the "Trigger Expression" is no longer true, the selected action is not performed.

**Trigger Expression group frame**

Specify in the right-hand **Trigger Expression** group frame the expression to be checked. For this purpose, various variables can be linked with each other using the Boolean operators "Or" ("|"), "And" ("&"), "Not Or" ("~|"), "Not And" ("~&"), "Equal to" ("=") and "Not equal to" ("<>").

Parameter	Explanation
Operator Type	Boolean operator with which the subordinate expressions should be linked or the variables checked.
Nature	Selection of the "Time" used to check a time value, or "Variable" to check a variable value.
Device	Selection of the device for which a value should be checked.
Variable	Variable whose value should be checked. This list displays only those variables made available for the previously selected device.
Value	Value for which the variable should be checked. This list displays only those values made available for the previously selected variable.

Tab. 88: Trigger Expression group frame

The dropdown lists for selection of the various setting options are displayed after clicking the default specified values "=", "No Variable Selected" or "No Value" (see section 8.12.4 "Example for creating a task").

The "=" and "<>" operators can be used to check variables of the CMC III PU itself or the connected devices for a specific status. Alternatively, time details (weekday) can also be checked.

The two "|" and "&" operators are used to link subordinate expressions appropriately with each other.

Proceed as follows to create an expression:

- If several expressions should be checked: First specify whether both subordinate expressions must supply the value "true" (operator "&") or only one value suffices to initiate the action (operator "|").
- Specify separately for all subordinate expressions whether it supplies the value "true" when the variable or the time specification corresponds to the value (operator "=") or not (operator "<>").

**8.12.3 Selection of an action**

Finally, assign to the task an action from the dropdown list when the complete expression switches to the value "true".

**Note:**

The action stored for a task is always performed only after a status change. If the definition of a task is changed, e.g. the logic of a switching output, the output is not switched directly when the change is accepted, but only when the status of an input changes.

Choose between the following settings:

Parameter	Explanation
Send Status Email	Send a status e-mail.
Send Status SMS	Send a status SMS.
Suppress Alarm Email	Suppress the sending of the e-mail to the selected recipients.
Suppress Alarm SMS	Suppress the sending of the SMS to the selected recipients.
Suppress Alarm Trap	Suppress the sending of the trap to the selected recipients.
Suppress Alarm Message	Suppress the alarm message of the selected status variable.
Set Variable Value	Set a variable value.
Shutdown Server	Orderly shutdown of a server.

Tab. 89: Details group frame

After selection of the desired action, you must still configure it appropriately.

- To do this, click the **Setup** button.

Depending on the previously selected action, enter in the appropriate dialogue to which, for example, a status e-mail will be sent ("Send Status Email" action), for which status an alarm message should be suppressed ("Suppress Alarm Message" action), etc.

**"Set Variable Value" action**

For selection of the "Set Variable Value" action, "switchable" variables (such as the digital outputs of a connected IO unit) can be set. Alternatively, you may opt for **no** action ("Do nothing": Select "--").

**Note:**

In the "Config Set Variable Value" dialogue, you must select in the "Device" dropdown list a device with a switchable variable so that the associated selection options are displayed in the fields below.

After clicking the **Setup** button, the "Configure Set Variable Value" dialogue appears.

Parameter	Explanation
Device	Device on which the variable should be set.
Variable	Variable that should be set.
Value on True	The value of the variable when the expression specified previously in the <b>Trigger Expression</b> group frame has the value "true".
Value on False	The value of the variable when the expression specified previously in the <b>Trigger Expression</b> group frame has the value "false".

Tab. 90: "Configure Set Variable Value" dialogue

**Note:**

Ensure that **different** values are selected in the two "Value on True" and "Value on False" dropdown lists. Otherwise, the variable retains this value even when the value of the expression in the **Trigger Expression** group frame changes.

**Grouping of outputs**

The assignment of an output to a group makes it possible with a single task or switching command via the website, Telnet or SNMP to switch several outputs (also different components) in the same manner. This avoids the need to create a separate appropriate task for each of these outputs.

If you have assigned several outputs the same group number, the selection of **one** of these outputs also switches all other outputs of this group correspondingly.

**"Shutdown Server" action**

If the "Shutdown Server" action is selected, servers on which an appropriate licence of the RCCMD software is installed can be shutdown orderly (see section 8.5.9 "Server Shutdown Configuration").

After clicking the **Setup** button, the "Shutdown Server" dialogue appears.

- Activate in the "Use" column the servers to be shutdown when the expression specified previously in the **Trigger Expression** group frame has the value "true".

**8.12.4 Example for creating a task**

You want to define a task that sends a status e-mail when an enclosure is opened at the weekend.

- Click the operator "=" displayed as default to display the "Operator Type" dropdown list.
- Select in this dropdown list the "&" operator to link the "weekend" and "door open" events with each other.
- Click the "No Variable Selected" entry below the first "=" operator.
- Select the "Time" entry in the "Nature" dropdown list.
- Click the first "Never" tab
- Select the "Saturday" entry in the "Day of Week" list-box.
- Keep the "Ctrl" key pressed and also select the "Sunday" entry in this list.
- Click the "No Variable Selected" entry below the second "=" operator.
- Select the "Variable" entry in the "Nature" dropdown list (preselected by default).
- Select the "[1] CMCIII-PU" entry in the "Device" dropdown list.
- Select the "Access.Status" entry in the "Variable" dropdown list.
- Click the "Closed" entry below the "[1] Access.Status" variable.
- Select the "Open" entry in the "Value" dropdown list.
- Then select in the **Details** group frame the "Send Status Email" entry as action in the dropdown list.
- Click the **Setup** button to specify the desired recipient for the status e-mail by activating them in the "Use" column.
- Ensure that the "Enable" checkbox is activated.

**8.12.5 Deactivating or deleting a task**

Tasks that are not required can be deactivated or deleted.

- Open the configuration menu of the associated task.

**Deactivating a task**

- Deactivate the "Enable" checkbox.
- Click the **Save** button to save the configuration.

**Deleting a task**

- Click the **Clear** button.  
This causes the task settings to be reset to their default values.
- Click the **Save** button to save the configuration.

**8.13 Virtual Devices**

The so-called "Virtual Devices" are displayed below the "Real Devices" in the left-hand area of the screen, i.e. the devices actually connected to the CMC III PU. They must first have been created on the right-hand side by clicking the **Configuration** tab.

Sensors and output devices can be coupled to form a new, predefined type of "virtual device". For example, when a specified temperature measured with the integrated temperature sensor is overshoot, a fan connected to a Power Unit (DK 7030.050) will be switched on.

A virtual device is treated as a dedicated component, for which, for example, the status can also be queried via SNMP. Although such a status query is not possible for a task, tasks can be configured to a greater extent (see section 8.12 "Tasks").

## 8.13.1 Types of virtual devices

You can select the following types as virtual device:

- Two-Level Controller
- Access Controller

### Two-Level Controller

Such a controller can be used to switch an output on or off (e.g. an output of a connected IO unit) using a specified (threshold) value (e.g. a limit temperature). The above-mentioned (threshold) value is specified directly in the virtual device and is independent of the limit values defined in the actual sensor.

In contrast to a task, a two-level controller cannot evaluate the status of the assigned sensor. This is possible only with a task (see section 8.12 "Tasks") for which combinations of status and time conditions can be set and one or more actions performed.

### Access Controller

An access controller can be used to switch a switchable output using a reader (transponder reader or number-combination lock). This allows, for example, a room access door to be monitored and opened.

## 8.13.2 Creating a virtual device

You create a virtual device on the **Configuration** tab. To do this:

- Select the "Virtual Devices" entry in the navigation area of the screen.
- Click the **Configuration** tab in the right-hand area of the screen.
- Click the **New** button in the **List of Virtual Devices** group frame.
- Select the desired type of the virtual device in the "Virtual Device Type" dropdown list in the "Create new Virtual Device" dialogue (e.g. "Two-Level Controller").
- Click the **OK** button to confirm the selection.

The configuration change causes the list of all devices to be reloaded automatically. A new component, e.g. the above-mentioned "Two-Level Controller", marked with a small green "+" character appears in the navigation area under the "Virtual Devices". The multi-LED of the CMC III PU flashes cyclically green – orange – red.

- Confirm the message for the configuration change (see section 6.4 "Acknowledgement of messages"). The device list is reloaded automatically. The entry under the "Virtual Devices" now has a yellow background and the LED of the CMC III PU illuminates orange continuously provided no other alarm is pending.
- Then specify the input and output of the virtual device. Depending on the virtual device type, the output of the virtual device can only be specified (see section 8.10 "Inputs and Outputs"). The device list is then reloaded automatically. A blue "information" symbol is displayed in the entry under the "Virtual Devices" and the LED of the CMC III PU illuminates green continuously provided no other alarm is pending.
- Then configure all settings on the **Observation** tab (see section 8.13.3 "Configuring a virtual device").

## 8.13.3 Configuring a virtual device

- Select the appropriate "Virtual Devices" in the navigation area of the screen.
- Click the **Observation** tab to perform the settings. On the "Device" level, general settings for the virtual device are performed or parameters displayed that provide detailed information about the virtual device (see section 8.3.1 "Device"). The "Production Date" parameter shows the calendar week in which the Virtual Device was created in the CMC III PU. Depending on the virtual device type, various parameters are displayed on the "Virtual Device" level.

### Two-Level Controller

Parameter	Explanation
DescName	Individual description of the virtual device.
InputValue	Current value of the virtual-device input.
OutputValue	Current value of the output taking account of the settings for "OutputValueOnStatusOn" or "OutputValueOnStatusOff".
Setpoint	Switching point of the input for a status change of the output.
Hysteresis	Required percentage deviation for undershooting or overshooting the switching point for a status change (see section 13 "Glossary").
OutputValueOnStatusOn	Value of the output when the input value lies above the switching point ("On" status).
OutputValueOnStatusOff	Value of the output when the input value lies below the switching point ("Off" status).

Tab. 91: "VirtualDevice" level for a two-level controller

Parameter	Explanation
Status	Current status of the two-level controller. Status "On": Input value lies above the switching point. Status "Off": Input value lies below the switching point.

Tab. 91: "VirtualDevice" level for a two-level controller

**Access Controller**

Parameter	Explanation
DescName	Individual description of the virtual device.
Command	The selection of the "Switch" command switches the output of the virtual device. It then switches for the duration stored in the "Delay" field the status stored in the "AccessLogic" field.
OutputValue	The current value of the switchable output that has been assigned to the access controller ("On" or "Off").
Delay	Duration for which the output of the virtual device changes its status. After expiration of this time, the output switches back to its original status. This parameter acts only when the "Toggle Output" entry is <b>not</b> selected in the "AccessLogic" dropdown list.
Access Logic	Status to which the output of the virtual device switches for permitted access. "Delayed On": Activate the output. "Delayed Off": Deactivate the output. "Toggle Output": Switch the output to the other status (from "On" to "Off" and vice versa).
Status	Current status of the access controller.

Tab. 92: "VirtualDevice" level for an access controller

Ensure that the configuration of an access controller has the following sequence:

- Select the status in the "AccessLogic" dropdown list into which the access controller should switch, e.g. "Delayed Off".
- Create with the "Delay" parameter the duration with which the output is switched into the previously selected status.
- Activate the "Switch" entry in the "Value" dropdown list.  
The access controller switches for the entered duration into the previously selected status, e.g. "Off", and then into the other status, e.g. "On".
- Specify in the access configuration with which access codes or which transponder cards the access controller can be activated (see section 8.7.3 "Access Configuration").

**8.13.4 Deleting a virtual device**

A virtual device is deleted on the **Configuration** tab. To do this:

- Select the "Virtual Devices" entry in the navigation area of the screen.
- Click the **Configuration** tab in the right-hand area of the screen.
- Select in the **List of Virtual Devices** group frame the virtual device to be deleted.
- Select with pressed "Ctrl" key other virtual devices that you also want to delete.
- Click the **Delete** button.  
A prompt appears as to whether the virtual device should actually be deleted.
- Confirm this by clicking the **OK** button or terminate the action by clicking the **Cancel** tab.
- Then confirm the message for the configuration change (see section 6.4 "Acknowledgement of messages").

**8.14 Charts**

As many as 16 charts on which the chronological trend for as many as 6 variable values can be viewed on the **Charts** tab. The data of these charts can be downloaded for separate evaluation (e.g. with a spreadsheet program such as Excel) as CSV files (see section 8.14.3 "Evaluating the CSV files").

**Note:**

Because the data of the charts is stored on an external storage medium, such as a USB stick or a SD card, the charts are not available on the "Compact" version of the Processing Unit (see section 8.3.7 "Memory").

- Select the **Charts** tab in the right-hand area of the screen page.



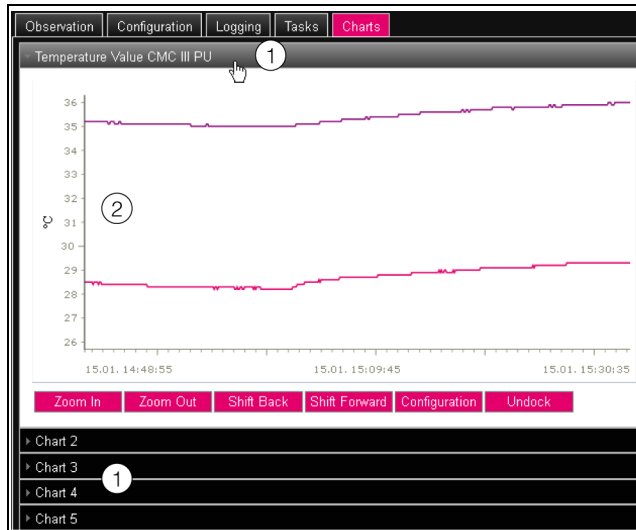


Fig. 48: Charts tab

## Key

- 1 Title lines
- 2 Displayed chart

- Click on the title line of the associated chart in order to display or hide the associated chart and the configuration buttons.

### 8.14.1 Configuring a chart

To record the variable values, each chart must first be configured and activated (once).

- If the buttons for the configuration and the navigation of the chart are not displayed, click the title line.

This chart now expands and it can be configured (e.g. "Chart 1").

- Click the "Configuration" button.

The "Chart Configuration" dialogue opens.

Fig. 49: "Chart Configuration" dialogue

Make the following settings in the left-hand **Details** group frame:

Parameter	Explanation
Enable	Enable or disable the chart.
Name	Chart designation. This designation is displayed in the title line of the chart.

Tab. 93: Details group frame

Parameter	Explanation
Description	Chart description.
Destination	Selection of the external storage medium on which the chart data is stored.
Interval	The time interval in seconds in which the current value is stored.
Visibility	Activates the user groups that can view and configure the associated chart.

Tab. 93: Details group frame

The associated charts must be deactivated before removal of the external storage medium on which chart data is stored. If this is not done, the files with the chart data may be corrupted. Alternatively, the external storage medium can also be signed-off from the system beforehand (see section 8.3.7 "Memory"). This deactivates the charts automatically.



## Note:

If an external storage medium is removed directly, this can cause loss of chart data.

In the right-hand **Variables** group frame, as many as 6 variables are specified per chart, the values of which can then be shown graphically.



## Note:

Changing the settings of existing charts can lead to data loss. Consequently, the associated CSV files should be saved beforehand (see section 8.14.3 "Evaluating the CSV files").

- Select one of the 6 lines.  
If the "None" entry is not present in a line, this variable has already been assigned to the chart.
- Click the **Edit** button.  
The "Variable Selection" dialogue opens.  
The following parameters are available:

Parameter	Explanation
Device	Selection of the device for which a value should be recorded.
Variable	The variable whose value should be recorded. This list shows only those variables available for the previously selected device.

Tab. 94: Variables group frame

- Click the **OK** button to accept the selected settings or the **Cancel** button to terminate the action.  
The "Chart Configuration" dialogue reopens.
- If necessary, add further variables to the chart.
- Then click the **Save** button to display the chart with the selected settings.



- Alternatively, click the **Clear** button to reset all chart settings to their default values. All previously stored values of the chart will be deleted.

If variables with different units are assigned to a chart (e.g. temperature in °C and voltage in V), then multiple ordinate axes (Y axes) will be created.

### 8.14.2 Chart view

As standard, the left-hand boundary of the time axis (X axis) is fixed to the time when the chart was activated. The right-hand boundary "grows" with each refresh of the chart after the time entered in the "Interval" parameter. Similarly, the ordinate axes are adapted so that all measured values can be displayed.

As standard, the values of all represented variables at the time of activating the chart and the associated time stamp (date and time) are displayed on the right-hand side of the chart.

#### Display of the measured values at a specific time

Provided the chart is activated, you can display the exact measured values for a specific time.

- Position the mouse cursor in the chart.

A vertical line is displayed.

The values of all represented variables at the selected time are displayed in plain language together with the associated time stamp on the right-hand side of the chart.

#### Adapting the displayed time period

In addition, the displayed time period can be reduced, for example, to more exactly investigate the trend at a specific time.

- Click the **Zoom In** button.

The complete trend from activation of the chart to the current time is displayed. Each click of this button reduces the displayed time period.

- Click the **Shift Forward** button to move the start time of the displayed area nearer the current time.

- To move the start time of the displayed area nearer the activation time of the chart, click the **Shift Back** button.

- Similarly, click the **Zoom Out** button to increase the displayed time period.

#### Displacing the charts from the browser window

As standard, the charts are displayed directly below the associated title line in the browser window. Alternatively, each chart can also be displayed in a separate window.



Note:

Decoupling from the website is **not** available for Internet Explorer. This button is absent.

- Click the **Undock** button for the desired chart.

The chart is now displayed in a separate window; the "Chart is undocked" message appears below the title in the main window.

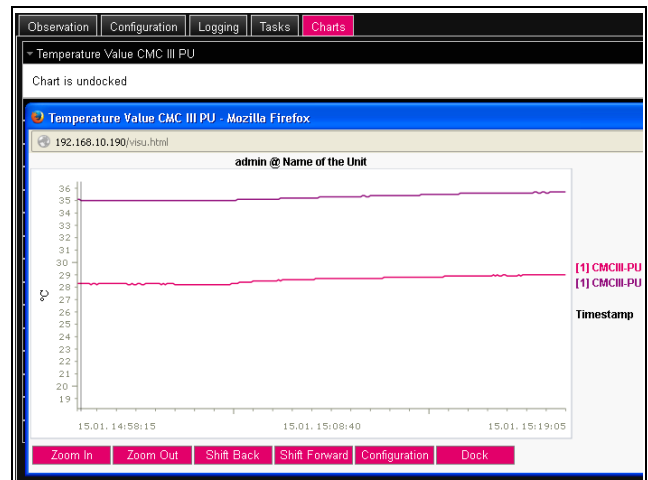


Fig. 50: Displaced chart

Similar to the displacement of windows for various connected sensors (see section 8.2.7 "Undock function"), the separate windows of the charts can be moved independent of the actual website of the CMC III PU and changed in size. This function can be used by several charts and so a complete overview created on the PC screen.

- Click the **Dock** button in the separate window or simply close the window to display the chart again below the title line in the main window.

### 8.14.3 Evaluating the CSV files

The charts are created using data from the CSV files. This data can be downloaded via FTP from the CMC III PU and then evaluated separately (e.g. with a spreadsheet such as Excel).

The maximum size of a CSV file is 4 GB. If this limit is reached, the CSV file will be saved as backup file and a new CSV file created automatically. If this second file also reaches the 4 GB limit, the first backup file will be overwritten when a new backup file is created.

#### Downloading the CSV files

- Establish a connection between a PC and the CMC III PU (see section 9.1 "Establishing an FTP connection").
- In the left-hand subwindow (PC), switch to any folder in which you want to store the CSV files.
- In the right-hand subwindow (CMC III PU), switch to the "download" folder and to the "usb-stick/records" or "sd-card/records" subfolder depending on where the CSV files are stored as specified by the configuration of the associated chart.
- Right-click the desired CSV file and select the "Download" action.

The CSV files are named using the schema "chart.##.json.csv", where "##" represents the number of the associated chart ("01" to "16").

## 8 Operation

EN

### Importing the CSV files into Excel

The procedure to import a CSV file for evaluation in Excel is described below.



Note:

In general, the CSV files can also be imported into another spreadsheet program, although the procedure may differ.

- Create an empty table in Excel.
- Use **Data > From text** in Excel to select the CSV file to be imported and follow the instructions of the conversion wizard.
- Also observe the following settings:
  - Step 1 of 3:**
    - Data type: Separated
    - Import begins in line: 1
    - File origin: Windows (ANSI)
  - Step 2 of 3:**
    - Separator: Tab stop
  - Step 3 of 3:**
    - Data format of the columns: Standard
- In Step 3 of 3, click the **Next...** button to specify the decimal separator (setting "point") and the 1000's separator (setting "comma") used in the CSV file. Depending on the country-specific settings, these settings may already be the defaults.



Note:

If different separators are set for numeric data, the time details in column 2 cannot be converted correctly later.

The display of the CSV files is divided into three areas.

- **Area 1:** General chart information in accordance with the configuration is shown in line 1 (e.g. chart name, description, start time).
- **Area 2:** Starting at line 3, information about the variables recorded in the chart is output separated by a blank line. In particular, the first two columns are important.
  - Column 1:** Variable designation. These designations are used as "header" in area 3.
  - Column 2:** The exact designation of the recorded measured values.
- **Area 3:** Finally, the time stamp and all recorded measured values are output also separated by a blank line.
  - Column 1 (Time0):** The UNIX time (number of elapsed seconds since 01.01.1970). Unless reformat- ted, this time cannot be used in Excel.
  - Column 2 (Time1):** The time value that can be used in Excel.
- **Columns 3 to maximum 8:** The actual measured values are output in these columns.

The time value in column 2 must be converted as follows to produce a format that can be read:

- Mark all time values in column 2.
- Right-click the marking and select the "Format cells" entry in the context menu.
- Select the "User-defined" entry in the "Category" columns on the "Numbers" tab in the "Format cells" dialogue.
- Enter the "DD.MM.YYYY hh:mm:ss" number format in the "Type" field.

The time stamp is then output as date and time so that it can be used in a chart, for example.

### 8.15 Dashboards



Note:

Changes made in the dashboards described below can be made only by users who belong to the "admins" user group.

As many as 12 flexibly configurable websites can be created on the **Dashboards** tab. This makes it possible to define different views for different purposes and display only the required information. For example, the graphical representation in multiple columns similar to the structure of multiple enclosures monitored with a CMC III PU is conceivable.



Note:

After the **direct** login on a dashboard, the user is **not** logged out automatically after the predefined time. The user remains logged in to CMC III PU while the dashboard is open.

#### 8.15.1 Basic settings

- Select the **Dashboards** tab in the right-hand area of the screen page.

The following information is displayed:

Parameter	Explanation
Name	Dashboard name.
Description	Extended description of the dashboard.
Enabled	Flag whether the dashboard can be enabled ("Yes") or not ("No").

Tab. 95: Dashboards tab

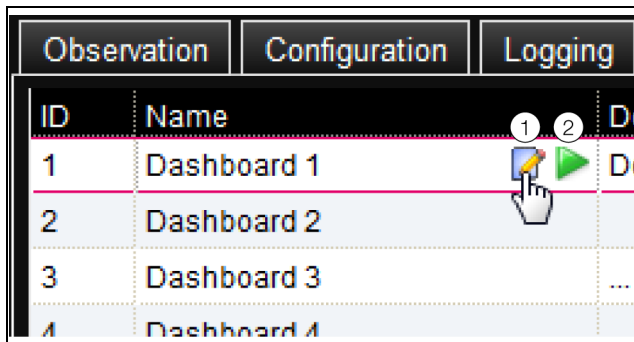


Fig. 51: Calling the "Dashboard Configuration" dialogue

**Legend**

- 1 "Edit" icon
- 2 "Start" icon

The above information can be changed in the "Dashboard Configuration" dialogue.

- Move the mouse cursor to the line of the dashboard whose information you want to change.  
An "Edit" icon appears at the end of the "Name" column and the cursor changes to the "hand" icon. If the dashboard can be enabled (the "Enabled" parameter has the value "Yes"), the green "Start" icon suffixed to the "Edit" icon can be used to enable the dashboard.
- Click the "Edit" icon.

The "Dashboard Configuration" dialogue opens.

- Enter the required values for the named parameters.
  - Confirm your entry by clicking the **Save** button.
- Click the **Clear** button to reset all inputs to their default values.

**8.15.2 Configuring a dashboard**

The contents of a dashboard must be configured (once). This requires that the dashboard is first enabled and then started.

- Check whether the "Yes" entry is displayed in the "Enabled" column for the dashboard to be configured.
- If this is not the case, first enable this setting in the "Dashboard Configuration" dialogue (see section 8.15.1 "Basic settings").
- Move the mouse cursor to the line of the dashboard to be configured.

A "Start" icon appears next to the "Edit" icon at the end of the "Name" column and the cursor changes to a "hand" icon.

- Click the "Start" icon.

The "Auto-Logout is Enabled" dialogue opens.

- Read the notification text and click the **OK** button to confirm.

A new browser window opens with the actual dashboard. The dashboard is empty for the first call because no boards have yet been selected.

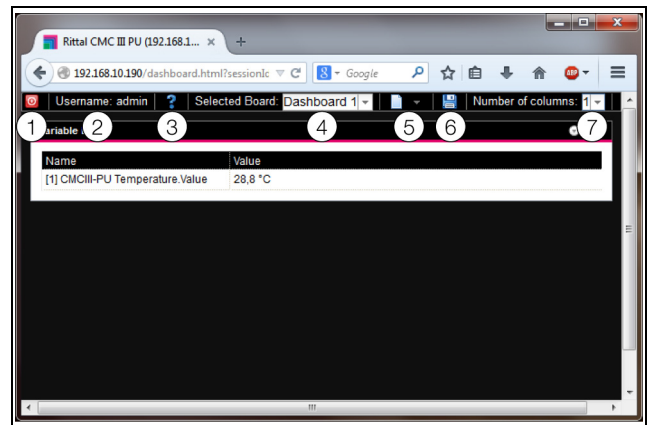


Fig. 52: Dashboard header line

**Legend**

- 1 **Logout** button
- 2 "Username" column
- 3 Call the "Board Details" dialogue
- 4 Dashboard selection
- 5 "Edit" icon for selecting a dashboard component
- 6 "Save" icon
- 7 Number of columns

**Note:**

The **Logout** button is displayed only when the login is made directly on a dashboard (see section 8.15.4 "Calling a dashboard").

The following information is displayed on the header line:

Parameter	Explanation
Username	Name of the user currently logged in.
"?"	Open the "Board Details" dialogue in which the basic settings of the dashboard are displayed.
Selected Board	Select the dashboard from a dropdown list. The names of the dashboards that can be enabled are displayed.
"Edit" icon	Select the components to be displayed on the dashboard.
"Save" icon	Save the dashboard. The configured components and the window layout are displayed for each login as they were configured at the time of saving. The actual display in a window is not saved.
Number of Columns	The number of columns in which the information to be displayed can be assigned (maximum nine columns).

Tab. 96: Dashboard header line

**Selectable representations**

The representations to be displayed on the dashboard are selected with the "Edit" icon. The following representations can be selected (depending on the type

## 8 Operation

EN

and number of components connected to the CMC III PU).

Parameter	Explanation
Visualizations	Graphical representations, such as the live stream of a connected webcam.
Device Tree	Navigation area with all connected components (see section 8.2.2 "Navigation area in the left-hand area").
Logging View	<b>Logging</b> tab (see section 8.11 "Logging").
Message View	Currently pending messages (see section 8.2.4 "Message display").
Charts	Created charts (see section 8.14 "Charts").
Variable List	Current value of individual variables, such as the current temperature value of the integrated temperature sensor.

Tab. 97: Selectable representations

### Adding representations to a dashboard

- Ensure that the dashboard to which you want to add information is selected in the "Selected Board" column.
- Select in the "Number of Columns" column the number of columns into which the dashboard should be divided.



#### Note:

The number of columns can also be increased later. To reduce the number of columns, the columns to be deleted must not contain any representations (e.g. in column 3 when the dashboard should be reduced to two columns).

- Click the "Edit" icon and select successively all representations to be displayed on the dashboard. Each representation newly added to the dashboard is initially always added at the end of the first column. It can be moved from there to another location within the dashboard.

### Moving representations on a dashboard

Representations are moved with the "drag-and-drop" principle.

- Place the mouse cursor on the title line of a representation. The mouse cursor changes to a cross arrow.
- Press the left mouse key, keep it pressed and drag the representation to the required position, e.g. into a different column.

Before being stored, the position is shown with a dashed line; the other representations are moved down correspondingly.

It is not possible to place a representation totally free on the dashboard. If a representation is set at the lower edge of a column, it will be moved automatically as far as possible upwards, to the upper edge of the dashboard or to the lower edge of a representation already placed there.

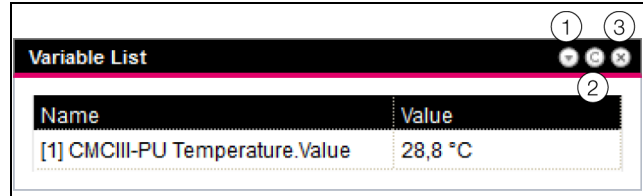


Fig. 53: Representation icons

#### Legend

- 1 Open and close representations
- 2 Adapt a list with variables
- 3 Remove representations

### Expanding and collapsing representations

Every representation can be expanded and collapsed via the title line. The representation, however, remains available, only the details are hidden.

- Click the "Collapse" icon in the title line of a representation. The representation on the title line is reduced.
- To redisplay the representation: Click the "Expand" icon in the title line. The representation reappears with all information; representations below on the dashboard are moved correspondingly.

### Adapting a list with variables

Multiple, separate representations with individual variables are created. Alternatively, multiple variables can also be displayed in a representation.

- Click the "C" icon in the title line of a "Variable List" type representation. The "Select Variables" dialogue is displayed.
- Enter a meaningful name for the variable list in the "Title" field.
- To change or delete an existing variable, click the line in which it is listed. The "Variable Selection" dialogue is displayed.
- Select in the "Device" field the component whose variable value you want to display.
- Select in the "Variable" field the variable you want to display.
- Alternatively, select the "None" entry in the "Device" field if you want to delete the variable from the representation.
- To add another variable, click on the line with the "None" entry. The "Variable Selection" dialogue also opens in which you can select the variable to be displayed.
- Finally, click the "OK" button in the "Select Variables" dialogue to transfer the variable list to the representation.

**Note:**

Changeable variable values can also be changed directly from the dashboards, provided you have the appropriate user rights.

**Changing the column widths**

Within certain limits, the width of the individual columns can be changed. In particular for graphical representations, a minimum width is prescribed for the columns.

- Place the mouse cursor between two columns.  
The mouse cursor changes to a double arrow and the separator line between the columns is represented with a line.
- Press the left mouse key, keep it pressed and drag the separator line to the required position.

If the minimum column width is undershot, the width is automatically changed appropriately.

**Removing representations**

Every representation can be removed completely from the dashboard via the title line.

- Click the "X" icon at the far right in the title line of a representation.  
The representation is removed directly from the dashboard without a prompt.

**8.15.3 Saving a dashboard**

To retain all changes permanently on a dashboard in accordance with section 8.15.2 "Configuring a dashboard", the current view must be saved.

- Click the "Save" icon in the header line of the dashboard.  
The "Success" dialogue appears when the dashboard has been saved.
- Click the "OK" button in the "Success" dialogue.  
The previously saved dashboard is displayed again.

**Note:**

- The current display of the individual components is not saved when a dashboard is saved. For example, the "Device Tree" initially appears collapsed for each call, except for the "Real Devices" and "Virtual Devices" levels.
- When a dashboard is saved, all other dashboards are also saved automatically.
- If (even different) dashboards are being edited concurrently by multiple users, the changes of all other users will be lost when saved (on all dashboards).

**8.15.4 Calling a dashboard**

After a login, similar to configuring, a dashboard can be called on a website (see section 8.15.2 "Configuring a dashboard"). In this case, the dashboard is opened in an **additional** browser window; the actual website also re-

mains open after leaving the dashboard. The **Logout** button is then **not** displayed in the header line.

Alternatively, the login can be made directly on a dashboard when establishing an HTTP connection (see section 7.2.1 "Establishing the connection").

- After entering the login information, click the **Login to Dashboard** button.

The dashboard view consisting only of the header line is displayed in the browser window.

- Select in the "Select Dashboard" field the dashboard to be displayed.

The "Select Dashboard" column can be used to switch at anytime between the dashboards that can be enabled. If changes have been made to the most recently selected dashboard that have not yet been saved, the "Dashboard was Modified" dialogue opens when the dashboard is switched.

- Click the **Yes** button if you do not want to save the changes and switch directly to the newly selected dashboard.
- Click the **No** button to return to the still unsaved dashboard and then save it (see section 8.15.3 "Saving a dashboard").

**8.15.5 Calling the website via a mobile terminal**

The dashboard that was stored in the configuration is used to represent the website of the CMC III PU on a mobile terminal (see section 8.6.8 "Display").

- Call in the browser of your mobile terminal the address of the CMC III PU, similarly as for a PC (see section 7.2.1 "Establishing the connection").
- Login with your user data.

The dashboard that was saved for the mobile terminals opens.

**Note:**

- If multiple variable lists with many variables are defined on the dashboard, delays when calling the mobile website can occur. This is independent of the mobile terminal power.
- If a dashboard is changed, all users logged in via a mobile terminal will be logged out automatically.

**8.15.6 Exiting a dashboard**

A dashboard is exited by closing the browser window. If the dashboard view was enabled directly during the login by clicking the **Login to Dashboard** button, the **Logout** button is displayed at the left of the "Username" column in the header line.

- Click the **Logout** button to log out completely from the CMC III PU.

To prevent an inadvertent logout from the website, this is not possible when the dashboard view was called for configuring a dashboard.



## 9 Updates and data backup

Because FTP access to the CMC III PU is required only to perform software updates and for data backup, the access should be generally blocked and briefly activated only for these tasks (see section 8.5.4 "File Transfer Configuration").

### 9.1 Establishing an FTP connection

To establish an FTP connection, you require the IP address of the CMC III PU. If this address is not known, because, for example, the DHCP function is activated, you must first establish a connection using the USB interface (see section 7.4.1 "Establishing the connection"). This access is made directly so that you can use this connection to determine the IP address of the CMC III PU.

An appropriate FTP client program is also required to establish an FTP connection (or SFTP connection). Rittal recommends the use of FileZilla.

- Install an FTP client program on the computer to be used to establish the FTP connection to the CMC III PU.
- Establish the network connection between the CMC III PU and the computer.
- Ensure that the CMC III PU and the computer have the same address space.
- Enter the appropriate access data in the FTP program.  
The following access data is entered by default:
  - Host: 192.168.0.190
  - Username: admin
  - Password: admin
  - Port: 21 (FTP) or 22 (SFTP)
- Start the connection between the computer and the CMC III PU; you may need to activate the setting: "Bypass Proxy settings".

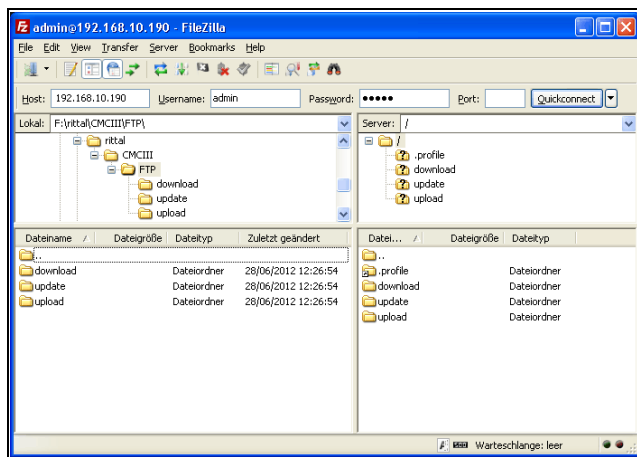


Fig. 54: FileZilla

The left-hand subwindow now shows the folder structure and the content of the PC; the right-hand subwindow contains the equivalent content of the CMC III PU.

## 9.2 Perform an update

### 9.2.1 Notes for performing an update

Observe the following security notes for performing an update.



Note:

The user is responsible for performing the update in the associated network environment.

Before starting an update, ensure that the security application connected to the CMC III PU can be interrupted for the duration of the update.

Ensure that you have access to the CMC III PU, because, for example, you will need to check the current status on-site.

During the update process, the power to the CMC III PU must not be interrupted under any circumstances.

If the update is performed using the USB connection (not possible on the CMC III PU Compact), the USB device must not be removed during the update process.

None of the connected components for the CMC III PU may be disconnected during the update process.

Under some circumstances, an update can reset the CMC III PU settings to their factory state.

In addition to the two possibilities described in this section to update via USB or (S)FTP, an update is also possible via the CMC III PU website (see section 8.6.6 "Firmware update").

### 9.2.2 Downloading the software update

A software update for the CMC III PU can be downloaded from the Internet address specified in section 14 "Customer service addresses". The update will be provided as a tar archive.

- Download the current software version from the website and save it on your computer.

### 9.2.3 Update via USB

Observe the following notes for updating the CMC III PU via USB:

- An update with a USB storage medium is not possible on the CMC III PU Compact.
- The USB storage medium used for the update must be formatted as FAT.
- In addition to the file for the software update, any other data may be present on the USB storage medium.

Proceed as follows to perform the update:

- Copy the downloaded tar file into the root directory of the USB storage medium.
- Start the CMC III PU if necessary.
- Wait until the multi-LED on the front lights green, orange or red continually or is flashing.
- Then insert the USB storage medium in the appropriate USB slot at the rear of the CMC III PU.

The update process starts automatically after a few minutes. This is indicated with a red flashing of the multi-LED (so-called heartbeat, alternately long and short). If the current software version (or a later version) is already installed on the CMC III PU, no update will be performed.

Depending on the number of connected sensors that are also updated, the complete update process takes approx. 15 minutes.

## 9.2.4 Update via FTP or SFTP

Proceed as follows to perform the update:

- Establish a connection between a PC and the CMC III PU (see section 9.1 "Establishing an FTP connection").
- Switch to the "update" folder in the right-hand subwindow (CMC III PU).
- In the left-hand window (PC), switch to the folder in which you stored the update file previously.
- Right-click the update file and select the "Upload" action.

The update process starts automatically after a few seconds. This is indicated with a red flashing of the multi-LED (so-called heartbeat, alternately long and short).

## 9.2.5 Perform the update

The system reboots automatically when the CMC III PU update has completed. On completion of the booting, the LED on the front indicates the CMC III PU status: green, orange or red.

An update of the connected sensors may then be performed. During this process, the status LED of the sensors flashes fast, the status LED of the CMC III PU flashes white. The sensor currently being updated also flashes violet.



**Note:**

Under no circumstances may the sensors be disconnected from the CMC III PU during the update.

The update of the CMC III PU is completed when the following conditions are satisfied:

1. The LED on the front of the CMC III PU lights to indicate the status: green, orange or red.
2. The LEDs on the bus connection of the sensors light green.
3. The multi-LEDs of the sensors behind the front cover flash blue.

The progress of the update is logged in the "\*.status" file. Depending on the type of the update process, this file is located either in the root directory of the USB storage medium or in the Update folder of the CMC III PU. The status file is a text file that can be opened with an editor or a text processing program.

- For an update via (S)FTP or the website: Transfer this file using an FTP connection from the Update folder of the CMC III PU to a PC.
- For an update via USB: Copy instead from the USB storage medium to a PC.
- Open the file with an editor and check whether the update was performed successfully or whether error messages have been issued.



**Note:**

Finally press the "Ctrl"+"F5" key combination in the browser to reload the complete website from the CMC III PU. All the changes now act.

## 9.3 Performing a data backup

Rittal recommends that a data backup of the CMC III PU configuration is made regularly (see section 9.2 "Perform an update").

Proceed as follows to perform a data backup:

- Establish an FTP connection between a PC and the CMC III PU (see section 9.1 "Establishing an FTP connection").
- In the left-hand subwindow (PC), switch to any folder in which you want to store the data backup.
- Switch to the "download" folder in the right-hand subwindow (CMC III PU).
- Right-click the "cmcllsave.cfg" (as of software version V3.11.00) file and select the "Download" action.

The settings and configurations of all connected components as displayed currently for the individual sensors on the **Observation** (see section 8.3 "Observation tab") and **Configuration** (see section 8.4 "Configuration tab") tabs are stored in this file.

For a second CMC III PU, this configuration file can be placed for transfer similarly in the upload directory. All general settings (other than the TCP/IP settings) are then taken from this file. If the same sensors, etc. are also installed in the same sequence on the second CMC III PU, all limit values of these sensors are also transferred.



**Note:**

A configuration file which was saved by a CMC III PU with an older software version cannot be transferred to a CMC III PU with a more recent software version.



## 9.4 Local saving of supplementary information

### Folder "download"

Similar to a data backup, you can download further files from the "download" folder to the PC. This is a text file with the following content:

1. "Devices.cmc3": The configurations of all connected components as displayed for the individual sensors on the **Observation** (see section 8.3 "Observation tab") and **Configuration** (see section 8.4 "Configuration tab") tabs.
2. "Logging.cmc3": Complete, i.e. unfiltered, log information of the CMC III PU (see section 8.11 "Logging").
3. "cmcllsave.cfg": Settings and configurations for all connected components (see section 9.3 "Performing a data backup").
4. "syslog.cmc": File for transferring the syslog information.

■ After the download to the PC, if necessary, rename the files to uniquely identify the various file versions.

### Folder "download/docs"

Further files can be downloaded from the "download/docs" folder. Text files are also involved:

1. "Configuration.cmc3": Configuration of the "Processing Unit" complete system as can also be displayed on the **Configuration** tab (see section 8.4 "Configuration tab").
2. "Configuration.cmc3.history": List of all configuration changes. Every change is identified with the revision version as well as with the date and time of the predecessor version and the current version.
3. "OID\_List.cmc3": Listing of all OIDs of the CMC III PU variables and the connected components as required for query via SNMP.
4. "OID\_List.changes": List of changes to all OIDs during the last update.
5. "OID\_List.old": List of changes to all OIDs before the last update.
6. "sysinfo.txt": Information on the software versions of both file systems in the CMC III PU, and which of the two file systems is active.
7. "system.log": Log information on all system actions such as configuration changes.
8. "ModbusMap.cmc3": List of all variables that can be queried via Modbus.

### Folder "download/docs/Configuration.cmc3.repository"

This folder additionally contains individual files for all the configuration changes implemented (patch files).

### Folder "download/docs/lists"

The "download/docs/lists" folder contains CSV files, which may be viewed after downloading e.g. with a spreadsheet program such as Excel.

1. "cmcllDevList.csv": List of all sensors and units connected to the system.
2. "cmcllVarList.csv": List of all variables provided by the system.

### Folder "download/usb-stick" or "download/sd-card"



Note:

These directories do not exist in the CMC III PU Compact.

If you have connected an external storage medium (USB stick or SD card) to the CMC III PU, data from the charts (see section 8.14 "Charts") and from a webcam, if connected (see section 8.3.8 "Memory") will be recorded there.

■ Download the data from these directories for further evaluation.

## **10 Storage and disposal**

### **10.1 Storage**

If the device is not used for a long period, Rittal recommends that it is disconnected from the mains power supply and protected from dampness and dust.

### **10.2 Disposal**

Because the CMC III PU consists mainly of the "housing" and "circuit board" parts, the device must be given to the electronic waste recycling system for disposal.

# 11 Technical specifications

EN

## 11 Technical specifications

Technical specifications		CMC III Processing Unit Compact	CMC III Processing Unit
Model No.		DK 7030.010	DK 7030.000
W x H x D (mm)		138 x 40 (1 U) x 120 + 12 (front)	
Temperature range		0 °C to +45 °C	
Operating humidity range		5% to 95% relative humidity, non-condensing	
Degree of protection		IP 30 to IEC 60 529	
Sensors / CAN bus connection units		Max. 4	Max. 32
Max. overall cable length for CAN bus		1 x 50 m	2 x 50 m
Interfaces	Network interface (RJ 45)	Ethernet in accordance with IEEE 802.3 via 10/100BaseT with PoE	
	USB interface (front)	Mini USB for setting the system	
	USB interface (rear)	–	For USB stick for data recording* and SW updates up to 32 GB
	Front SD-HC slot*	–	1 to 32 GB for data recording
	Rear serial RS232 (RJ12)	One for connecting the display unit (7320.491), GSM unit (DK 7320.820 or DK 7030.570) or ISDN unit (DK 7320.830 or DK 7030.580)	
Inputs and outputs	Digital inputs (terminal)	2	
	Relay output (terminal)	1 (floating contact, 24 V $\overline{\text{---}}$ , 1 A)	
	CAN bus (RJ 45)	One for maximum four sensors	Two, each with maximum 16 sensors = 32 sensors in total
Operation/ signals	Keys	One acknowledge key	
	Hidden reset key	One service key	
	Piezo signal generator	1	
	LED display	OK / warning / alarm / network status	
	Rear LED	One for the network status	
Protocols	Ethernet	TCP/IPv4, TCP/IPv6, SNMPv1, SNMPv2c, SNMPv3, Telnet, SSH, FTP, SFTP, HTTP, HTTPS, NTP, DHCP, DNS, SMTP, XML*, Syslog, LDAP	
Redundant power supply	Input 24 V $\overline{\text{---}}$ (socket)	One for connecting the CMC III power pack	
	Input 24 V $\overline{\text{---}}$ (terminals)	One for direct connection or for connecting the CMC III power pack	
	Power over Ethernet	1	
Functions	Time function	Real-time clock with backup battery (24 hours), without battery/accumulator with NTP	
	User administration	LDAP	
	User interface	Integral web server	
	Control desk connection	Integral OPC server	
Integrated sensors	Temperature sensor	NTC sensor in the housing front; as alternative, an external temperature sensor (optional) is provided in the scope of supply.	
	Access sensor	Infrared technology in the housing front	

Tab. 98: Technical specifications



Note:

All functions in the table marked with an "\*" will be available as software update. This software update can be downloaded from the Internet page specified in section 14 "Customer service addresses".

## **12 Accessories**

In addition to the integrated sensors, the CAN bus interface allows a wide range of sensors, actuators and systems for access monitoring to be connected. A detailed listing of the complete range of accessories can be found at the Internet address specified in section 14 "Customer service addresses".

## 13 Glossary

### CMC III PU (CMC III Processing Unit):

The CMC III PU is the core product of the Rittal enclosure monitoring and control system for the electronic monitoring of enclosures and server racks.

### GSM card:

Telephone card for a mobile telephone.

### Hysteresis:

If an upper limit value is overshoot (SetPtHigh) or a lower limit value is undershoot (SetPtLow) a warning or an alarm will be output **immediately**. For a hysteresis of x%, the warning or alarm for undershooting an upper limit value or overshooting a lower limit value clears only for a difference of  $x/100 \cdot \text{limit value}$  to the limit value.

### LDAP:

The Lightweight Directory Access Protocol (LDAP) is an application protocol from network technology. It permits information of a directory service to be requested via an IP network. In the CMC III PU, the user administration can be transferred from an LDAP server.

### MIB (Management Information Base):

The MIB was developed to fetch and change network elements. The MIB for SNMP was defined in the RFC 1157; the MIB-II for TCP/IP was defined in the RFC 1213. The MIBs have been registered as the OID for the IANA (Internet Assigned Numbers Authority). Once an object has been assigned to an OID, the meaning may no longer be changed. An overlapping with other OIDs is not permitted.

### OPC-UA:

OPC Unified Architecture (OPC-UA) is an industrial machine-to-machine communications protocol. It permits, for example, the sensor data to be requested from a control room system.

### SMS service number:

The telephone number that the telephone provider makes available for sending SMS messages.

### SNMP (Simple Network Management Protocol):

The SNMP is a simple network management protocol based on TCP/IP. It was developed to allow network components to be monitored and controlled at a central management station.

### Telnet:

Telnet is a protocol to allow guest access to a remote server. The Telnet program provides the required client functions of the protocol.

### Trap:

Trap is the unrequested sending of SNMP messages.

### Trap receiver:

The trap receiver is the recipient of SNMP messages.

# 14 Customer service addresses

---

EN

## **14 Customer service addresses**

For technical questions, please contact:

Tel.: +49(0)2772 505-9052

E-mail: [info@rittal.de](mailto:info@rittal.de)

Homepage: [www.rittal.com](http://www.rittal.com)

For complaints or service requests, please contact:

Tel.: +49(0)2772 505-1855

E-mail: [service@rittal.de](mailto:service@rittal.de)





# Rittal – The System.

**Faster – better – everywhere.**

- Enclosures
- Power Distribution
- Climate Control
- IT Infrastructure
- Software & Services

08.2016 / ID no. D-0000-00000552 Rev00

You can find the contact details of all  
Rittal companies throughout the world here.



[www.rittal.com/contact](http://www.rittal.com/contact)

ENCLOSURES

POWER DISTRIBUTION

CLIMATE CONTROL

IT INFRASTRUCTURE

SOFTWARE & SERVICES

FRIEDHELM LOH GROUP

