

Rittal – The System.

Faster – better – everywhere.

AX wall-mounted enclosure, 3-piece

Less complexity,
even greater flexibility with interior fit-outs



ENCLOSURES

POWER DISTRIBUTION

CLIMATE CONTROL

IT INFRASTRUCTURE

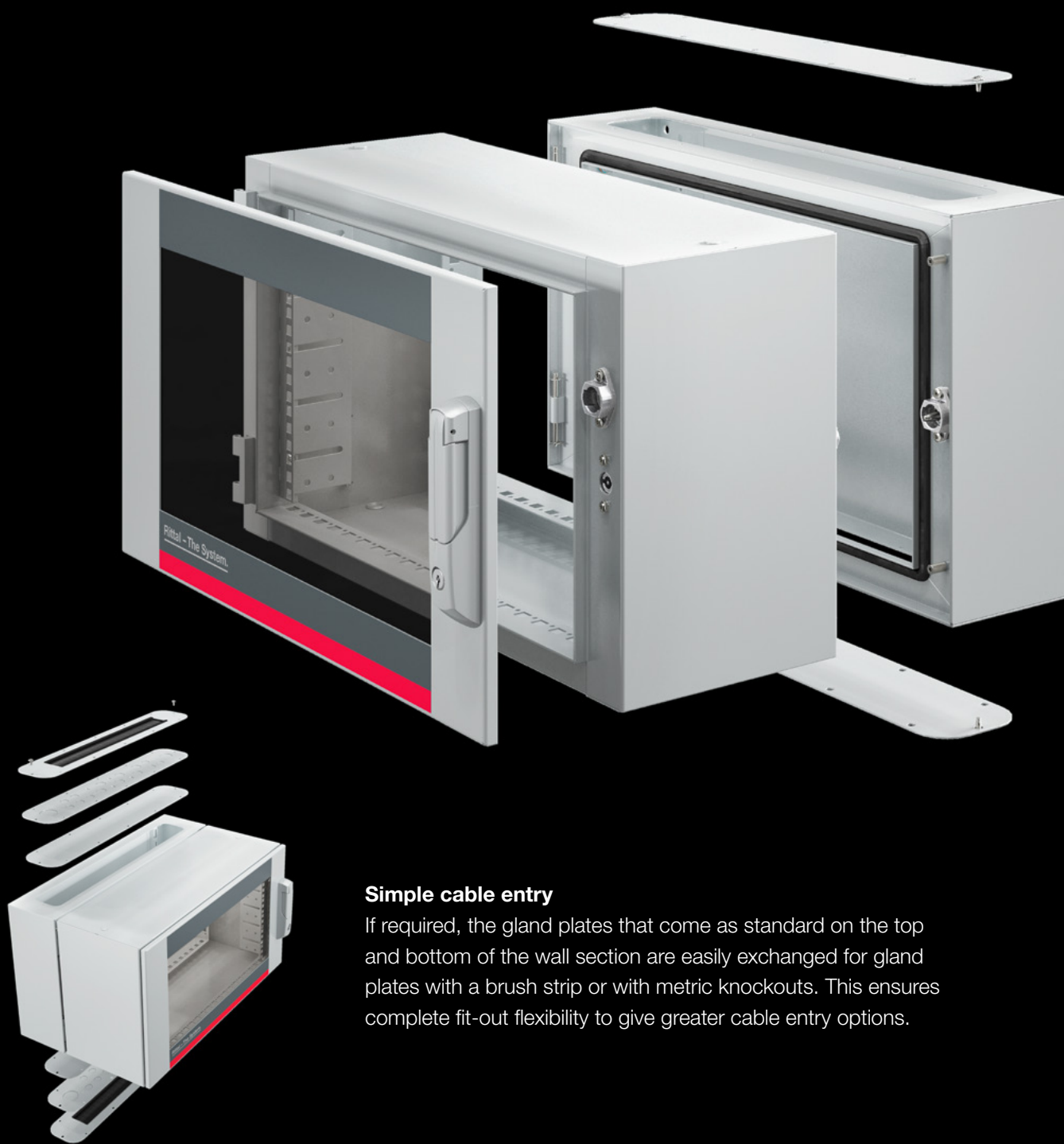
SOFTWARE & SERVICES

FRIEDHELM LOH GROUP



Complete flexibility across the entire product range

Our new 3-piece wall-mounted enclosures are available in 15 sizes. Because these enclosures are structurally fully compatible with Rittal's modular system, they can be configured to your specific design requirements. Simply select the accessories you need for your application from the Rittal standard range, available within 24/48 hours.



Simple cable entry

If required, the gland plates that come as standard on the top and bottom of the wall section are easily exchanged for gland plates with a brush strip or with metric knockouts. This ensures complete fit-out flexibility to give greater cable entry options.

Benefits of the AX wall-mounted enclosure, 3-piece

Flexible interior installation with mounting plates and rails

The AX wall-mounted enclosure has commonality with other Rittal products for greater flexibility and can be fitted with one or more mounting plates from the KX range, for example for fitting control-gear and other parts.



The perforated mounting strip with U-profile and system punchings on the rear of the wall-mounted enclosure allows for flexible configuration with punched sections and rails on a 25 mm pitch pattern.



Depth-variable 482.6 mm (19") mounting position

When supplied, the 482.6 mm (19") mounting angles have been fitted at the front of the centre part of the enclosure. The hole punchings in the front and rear sections of the centre part as used with the VX range means that Rittal system accessories are universal and can easily be used.



The 482.6 mm (19") mounting angles can be rotated through 180° and secured in the slots to create additional installation space at the front.



For maximum flexibility in terms of depth, the 482.6 mm (19") mounting angles can be installed at an adjustable depth using a VX punched section with mounting flange.



AX wall-mounted enclosure, 3-piece



Accessories page 6

Material:

- Wall section and hinged part: Sheet steel, 1.5 mm
- Viewing window: Single-pane safety glass, 3 mm

Surface finish:

- Powder-coated

Colour:

- Wall section and hinged part: RAL 7035
- Glazed door: RAL 7035/7015 (slate grey)

Supply includes:

- Wall section: Solid gland plate, top and bottom
- Hinged part with 25 mm pitch pattern of holes in the front and rear frame, and two 482.6 mm (19") mounting angles, front, static installation
- Designer glazed door
- Centre part lock: 3 mm double-bit
- Designer glazed door lock: Security lock 3524 E

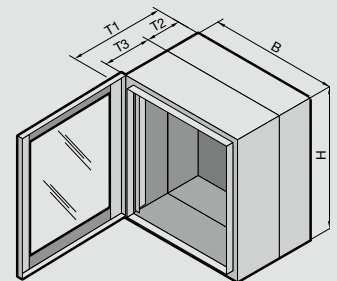
Please note the product-specific scope of supply.

Protection category IP to IEC 60 529:

- IP 54 with solid gland plates

Approvals:

- CE



Height 345 mm, 478 mm

Units U	Pack	6	6	9	9	9	9	Page	
Width (B) mm		600	600	600	600	600	600		
Height (H) mm		345	345	478	478	478	478		
Depth (T1) mm		373	473	373	473	573	673		
Depth of wall section (T2) mm		135	135	135	135	135	135		
Depth of hinged part (T3) mm		216	316	216	316	416	516		
Model No.	1 pc(s).	2260.630	2260.640	2260.930	2260.940	2260.950	2260.960		
Product-specific scope of supply									
Mini-comfort handle		■	■	■	■	■	■		
Comfort handle for lock inserts and 2-point locking		-	-	-	-	-	-		
Accessories									
Mounting plate for KX		see page	see page	see page	see page	see page	see page	6	
Punched sections with mounting flanges, 14 x 39 mm	for depth	4 pc(s).	-	8619.700	-	8619.700	8619.710	8619.720	6
Support strip	for depth	20 pc(s).	-	4594.000	-	4594.000	4309.000	4596.000	6
Earth rail, horizontal	for width	1 pc(s).	7113.000	7113.000	7113.000	7113.000	7113.000	7113.000	
C rail 30/15 to EN 60 715		see page	see page	see page	see page	see page	see page	7	
Gland plate with brush strip	1 pc(s).	2260.060	2260.060	2260.060	2260.060	2260.060	2260.060	6	
Gland plate with metric knockouts	1 pc(s).	2260.070	2260.070	2260.070	2260.070	2260.070	2260.070	6	

AX wall-mounted enclosure, 3-piece

Height 612 mm, 746 mm

Units U	Pack	12	12	15	15	15	Page
Width (B) mm		600	600	600	600	600	
Height (H) mm		612	612	746	746	746	
Depth (T1) mm		373	473	473	573	673	
Depth of wall section (T2) mm		135	135	135	135	135	
Depth of hinged part (T3) mm		216	316	316	416	516	
Model No.		2261.230	2261.240	2261.540	2261.550	2261.560	
Product-specific scope of supply							
Mini-comfort handle		■	■	■	■	■	
Comfort handle for lock inserts and 2-point locking		-	-	-	-	-	
Accessories							
Mounting plate for KX		see page	see page	see page	see page	see page	6
Punched sections with mounting flanges, 14 x 39 mm	for depth	4 pc(s).	-	8619.700	8619.700	8619.710	8619.720
Support strip	for depth	20 pc(s).	-	4594.000	4594.000	4309.000	4596.000
Earth rail, horizontal		1 pc(s).	7113.000	7113.000	7113.000	7113.000	
C rail 30/15 to EN 60 715		see page	see page	see page	see page	see page	7
Gland plate with brush strip		1 pc(s).	2260.060	2260.060	2260.060	2260.060	6
Gland plate with metric knockouts		1 pc(s).	2260.070	2260.070	2260.070	2260.070	6

Height 1012 mm

Units U	Pack	21	21	21	21	
Width (B) mm		600	600	600	600	
Height (H) mm		1012	1012	1012	1012	
Depth (T1) mm		373	473	573	673	
Depth of wall section (T2) mm		135	135	135	135	
Depth of hinged part (T3) mm		216	316	416	516	
Model No.		2262.130	2262.140	2262.150	2262.160	
Product-specific scope of supply						
Mini-comfort handle		-	-	-	-	
Comfort handle for lock inserts and 2-point locking		■	■	■	■	
Accessories						
Mounting plate for KX		see page	see page	see page	see page	6
Punched sections with mounting flanges, 14 x 39 mm	for depth	4 pc(s).	-	8619.700	8619.710	8619.720
Support strip	for depth	20 pc(s).	-	4594.000	4309.000	4596.000
Earth rail, horizontal	for width	1 pc(s).	7113.000	7113.000	7113.000	7113.000
C rail 30/15 to EN 60 715		see page	see page	see page	see page	7
Gland plate with brush strip		1 pc(s).	2260.060	2260.060	2260.060	2260.060
Gland plate with metric knockouts		1 pc(s).	2260.070	2260.070	2260.070	2260.070

AX wall-mounted enclosure, 3-piece, with cut-out for filter fan

(Blue e+ outlet filter – SK 3238.300 supplied loose)

Units U	Pack	9	9	15	15	21	21	Page
Width (B1) mm		600	600	600	600	600	600	
Height (H1) mm		478	478	746	746	1012	1012	
Depth (T1) mm		573	673	573	673	573	673	
Depth of wall section (T2) mm		135	135	135	135	135	135	
Depth of hinged part (T3) mm		416	516	416	516	416	516	
Load capacity of hinged part (static) N		450	450	750	750	750	750	
Model No.	1 pc(s).	2260.955	2260.965	2261.555	2261.565	2262.155	2262.165	
Product-specific scope of supply								
Mini-comfort handle for lock inserts	1 pc(s).	■	■	■	■	-	-	
Comfort handle for lock inserts and 2-point locking	1 pc(s).	-	-	-	-	■	■	
Security lock 3524 E	1 pc(s).	■	■	■	■	■	■	
Blue e+ outlet filter – SK 3238.300	2 pc(s).	■	■	■	■	■	■	

Accessories can be found on pages 6 and 7

AX wall-mounted enclosure, 3-piece

Accessories



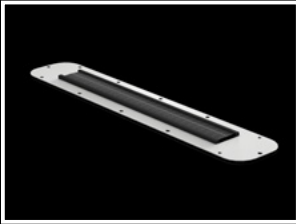
Gland plate With metric knockouts

Material:
– Sheet steel, 1.5 mm

Colour:
– RAL 7035

Protection category IP to IEC 60 529:
– IP 54

Cable entry (Qty x Ø)	Pack	Model No.
4 x M12 8 x M20 6 x M25 1 x M32 1 x M40	1 pc(s).	2260.070

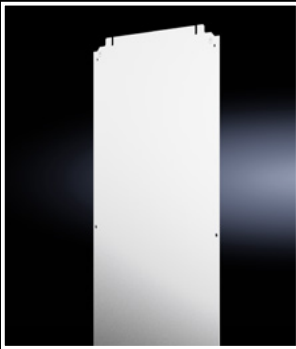


Gland plate with brush strip

Material:
– Sheet steel, 1.5 mm

Colour:
– RAL 7035

Pack	Model No.
1 pc(s).	2260.060



Mounting plate for terminal boxes KX

Material:
– Sheet steel, 2 mm

Surface finish:
– Zinc-plated

Width x height mm	Pack	Model No.
485 x 175	1 pc(s).	1565.800
485 x 275	1 pc(s).	1569.800

Maximum configuration of AX wall-mounted enclosure, 3-piece

Enclosure height U	No. of mounting plates	Model No. Mounting plate
6	1	1569.800
9	2	1565.800
12	2	1569.800
15	4	1565.800
21	1	1569.800
	4	1565.800



Punched section with mounting flange, 14 x 39 mm

Material:
– Sheet steel

Surface finish:
– Zinc-plated

Supply includes:
– Assembly parts

For installation in hinged part

Enclosure depth mm	Pack	Model No.
437	4 pc(s).	8619.700
573	4 pc(s).	8619.710
673	4 pc(s).	8619.720

For installation in wall section

Enclosure width mm	Pack	Model No.
600	4 pc(s).	8619.720



Support strip

Material:
– Sheet steel

Surface finish:
– Zinc-plated

Supply includes:
– Assembly parts

For installation in hinged part

Enclosure depth mm	Pack	Model No.
437	20 pc(s).	4594.000
573	20 pc(s).	4309.000
673	20 pc(s).	4596.000

For installation in wall section

Enclosure width mm	Pack	Model No.
600	20 pc(s).	4596.000

AX wall-mounted enclosure, 3-piece

Accessories

C rail 30/15 to EN 60 715

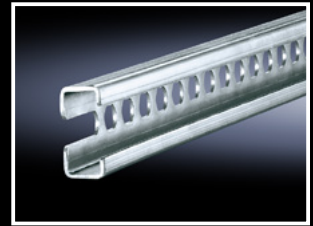
Material:

- Sheet steel

Surface finish:

- Zinc-plated

Length mm	Pack	Model No.
455	6 pc(s).	4943.000
555	6 pc(s).	4944.000
755	6 pc(s).	4945.000
955	6 pc(s).	4946.000
1155	6 pc(s).	4947.000



Note:

- Depending on the installation, rails may need to be cut to length in the width or depth

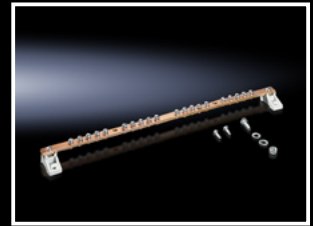
Earth rail, horizontal

Supply includes:

- Earth rail made from E-Cu 57 to DIN EN 12 163, DIN EN 13 601, 15 x 5 mm
- 20 connection points with M5 screws
- 2 earth connections 25 mm²
- 2 isolators
- Assembly parts

For installing in the wall section

For enclosure width mm	Width mm	Height mm	Length mm	Pack	Model No.
600	15	5	450	1 pc(s).	7113.000



Wall mounting bracket

for AX sheet steel, KX sheet steel, AX IT, EL

For mounting AX and KX sheet steel enclosures.

Material:

- Sheet steel

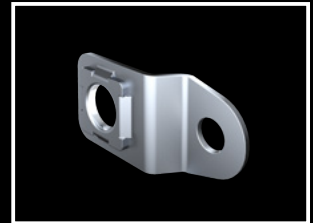
Protection category:

- Type 1, 3R, 4, 12

Supply includes:

- Assembly parts

Wall distance mm	Pack	Model No.
10	1 pc(s).	1590.010



Wall mounting bracket

for AX sheet steel, KX sheet steel, AX IT, EL

For mounting wall-mounted enclosures, even in confined spaces.

Material:

- Sheet steel

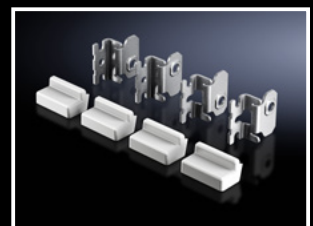
Protection category:

- Type 1, 3R, 4, 12

Supply includes:

- Wall mounting bracket
- Cover caps
- Assembly parts

Wall distance mm	Pack	Model No.
40	1 pc(s).	2503.020
20	1 pc(s).	2508.020



Rittal – The System.

Faster – better – everywhere.

- Enclosures
- Power Distribution
- Climate Control
- IT Infrastructure
- Software & Services

You can find the contact details of all Rittal companies throughout the world here.



www.rittal.com/contact

XWWW00312EN2502

ENCLOSURES

POWER DISTRIBUTION

CLIMATE CONTROL

IT INFRASTRUCTURE

SOFTWARE & SERVICES



FRIEDHELM LOH GROUP