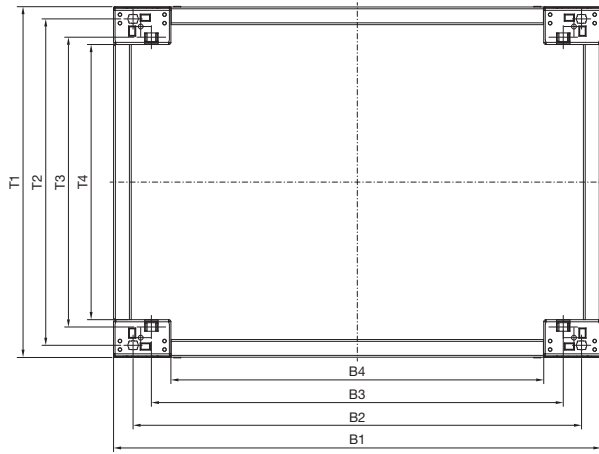


Systemausbau

Sockel

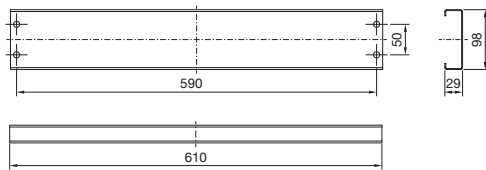
Sockel-System VX, Edelstahl



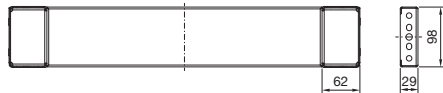
Sockel, 100 mm hoch



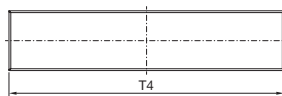
Sockel-Blende, 100 mm hoch, Vorderansicht



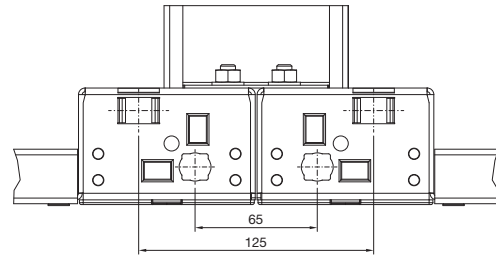
Ansicht X



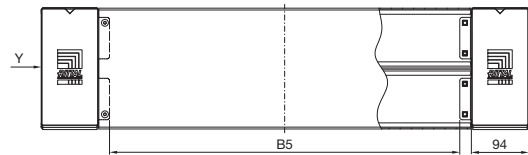
Sockel-Blende, seitlich, 100 mm hoch



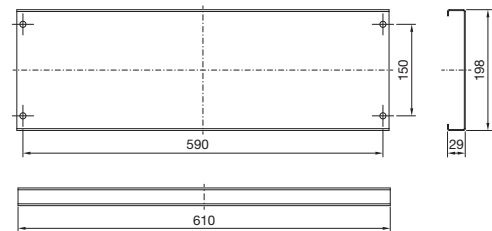
Anreihung



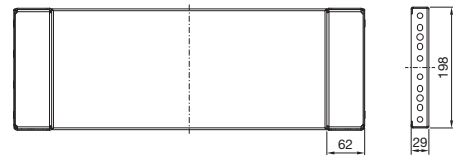
Sockel, 200 mm hoch



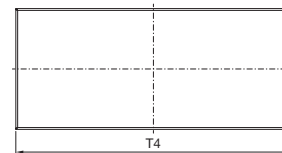
Sockel-Blende, 200 mm hoch, Vorderansicht



Ansicht Y



Sockel-Blende, seitlich, 200 mm hoch



Sockel-Eckstück mit Sockel-Blende, vorne und hinten							
Best.-Nr. VX	Höhe	Breite	B1	B2	B3	B4	B5
8660.050	100	600	599	535	475	411	373
8660.051	100	800	799	735	675	611	573
8660.052	100	1000	999	935	875	811	773
8660.053	100	1200	1199	1135	1075	1011	973
8660.060	200	600	599	535	475	411	373
8660.061	200	800	799	735	675	611	573
8660.062	200	1000	999	935	875	811	773
8660.063	200	1200	1199	1135	1075	1011	973

Sockel-							
Best.-Nr. VX	Höhe	Breite	T1	T2	T3	T4	
8660.070	100	400	375	335	275	251	
8660.071	100	500	475	435	375	351	
8660.072	100	600	575	535	475	451	
8660.080	200	400	375	335	275	251	
8660.081	200	500	475	435	375	351	
8660.082	200	600	575	535	475	451	

B1 = Breite Sockel
 B2/B3 = Befestigung zum Schrank/Boden
 B4 = Sockel-Blende vorne/hinten
 B5 = Lichtes Unterfahrmaß
 T1 = Tiefe Sockel
 T2/T3 = Befestigung zum Schrank/Boden
 T4 = Sockel-Blende, seitlich