

# Enclosures

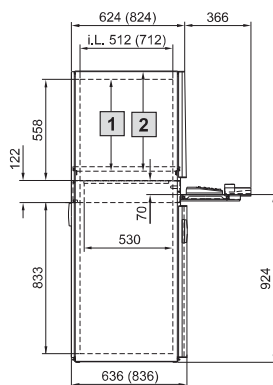
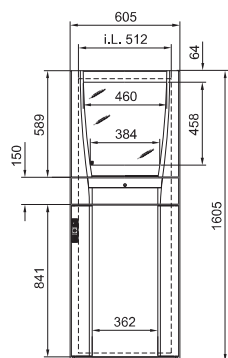
## PC enclosure systems

### Based on TS 8

With keyboard drawer Catalogue 33, page 130

#### With drawer

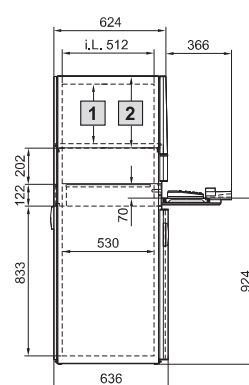
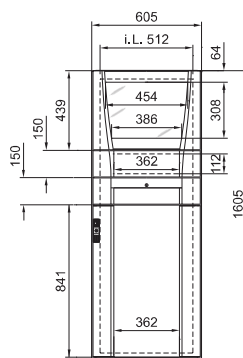
PC 8366.000, PC 8368.000



- 1 Max. 505, adjustable on a 25 mm pitch pattern  
2 Max. 549, adjustable on a 25 mm pitch pattern

#### With mounting compartment, small and drawer

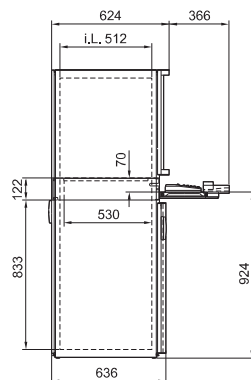
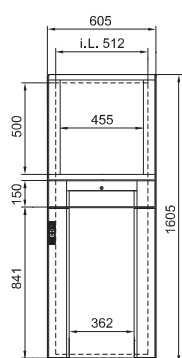
PC 8366.300



- 1 Max. 355, adjustable on a 25 mm pitch pattern  
2 Max. 397, adjustable on a 25 mm pitch pattern

#### With mounting compartment, large and drawer

PC 8366.400



i.L. = Clearance width

				Model No. PC		
				Depth 636 mm	8366.000	8366.300
				Depth 836 mm	8368.000	—
Supply includes	Design	Material	Colour RAL			
Enclosure	Frame construction with side panels and roof secured from the inside	Sheet steel 1.5 mm	7035 textured	■	■	■
	Gland plates, three-part	Sheet steel 1.5 mm	Zinc-plated			
Rear door	With locking rod and double-bit insert, hinged on the r/h side	Sheet steel 2.0 mm	7035 textured	■	■	■
Glazed door, top	With support frame latched from the inside <sup>1)</sup> , r/h hinge	Sheet steel 1.5 mm	7015			
	Vertical decorative trim panels	Plastic to UL 94-V0	7035	■	■	
	Pane with screen-printed mask	Toughened safety glass 4.0 mm	7015			
Mounting compartment, large, top	Vertical bars, latched from the inside <sup>1)</sup> , hinged on r/h side	Aluminium section	7035			
	Installation plate	Sheet steel 1.5 mm	7015			■
	Trim strip top/bottom	Plastic to UL 94-V0	7035			
Component shelf for monitor	Slotted, permanently installed	Sheet steel 1.5 mm	7015	■	■	
Drawer for keyboard	Enclosure	Sheet steel 1.5 mm	7035			
	Keyboard extension piece with cable support, pull-out mousepad and keyboard cradle	Sheet steel 1.5 mm	7035	■	■	■
	Trim panel with handle strip, folded as handrest, with lock no. 3524 E	Plastic to UL 94-V0	7035/7015/9006			
Mounting compartment, small	R/h hinge, screw-fastened from the inside on the left, folded mounting plate	Sheet steel 1.5 mm	7015		■	
	Decorative side trim panels	Plastic to UL 94-V0	7035			
Bottom door	Vertical bars with locking rod and double-bit insert, hinged on r/h side	Aluminium section	7035	■	■	■
	Door or installation plate folded	Sheet steel 1.5 mm	7015			

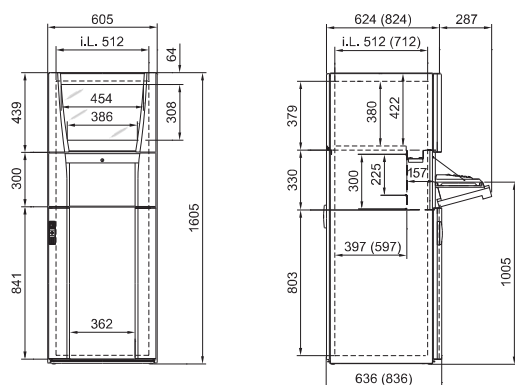
<sup>1)</sup> With unlatching for top glazed door

### Based on TS 8

With folding keyboard or desk section Catalogue 33, page 130

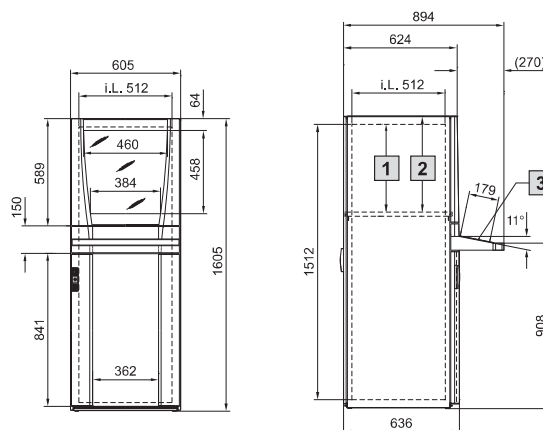
#### With fold-out tray

PC 8366.100, PC 8368.100



#### With desk section

PC 8366.200



- 1 Max. 505, adjustable on a 25 mm pitch pattern
  - 2 Max. 549, adjustable on a 25 mm pitch pattern
  - 3 Max. installation surface 540 x 179 mm
- i.L. = Clearance width

				Model No. PC	
				Depth 636 mm	8366.100
				Depth 836 mm	8368.100
Supply includes	Design	Material	Colour RAL		
Enclosure	Frame construction with side panels and roof secured from the inside	Sheet steel 1.5 mm	7035 textured	■	■
	Gland plates, three-part	Sheet steel 1.5 mm	Zinc-plated		
Rear door	With locking rod and double-bit insert, hinged on the r/h side	Sheet steel 2.0 mm	7035 textured	■	■
Glazed door, top	With support frame latched from the inside <sup>1)</sup> , r/h hinge	Sheet steel 1.5 mm	7015	■	■
	Vertical decorative trim panels	Plastic to UL 94-V0	7035		
	Pane with screen-printed mask	Toughened safety glass 4.0 mm	7015		
Component shelf for monitor	Slotted, permanently installed	Sheet steel 1.5 mm	7015	■	■
Fold-out tray for keyboard	Enclosure with mouse support and cut-out in the rear panel, width 482.6 mm (19") x height 4 U, for rear attachment	Sheet steel 1.5 mm	7035	■	
	Trim panel hinged at the bottom, with 2 retaining cords, with lock no. 3524 E	Plastic to UL 94-V0	7035/7015/9006		
	Keyboard support with mousepad extension piece and 2 nylon tapes for keyboard	Sheet steel 1.5 mm	7035		
Desk section	Enclosure with removable cover top and bottom	Sheet steel 1.5 mm/2.0 mm	7035		■
	Trim strip, top and handle strip	Plastic to UL 94-V0	7035/7015/9006		
Bottom door	Vertical bars with locking rod and double-bit insert, hinged on r/h side	Aluminium section	7035	■	■
	Door or installation plate folded	Sheet steel 1.5 mm	7015		

<sup>1)</sup> With unlatching for top glazed door