

Technical details

Support arm system 60/120/180

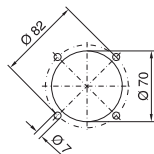
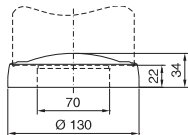
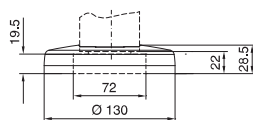
Attachment, system 60/120

for command panels with support arm connection $\varnothing 130$ mm Innovations 2012, page 38

CP 6206.320

CP 6212.320

Mounting cut-out,
enclosure $\varnothing 130$ mm



Attachment, system 60

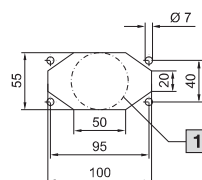
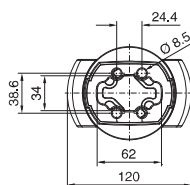
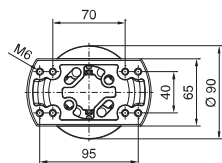
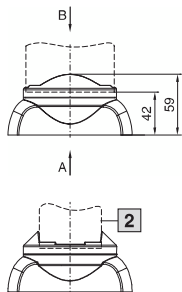
for command panels with support arm connection $\square 120 \times 65$ mm Innovations 2012, page 38

CP 6206.360

View A

View B

Mounting cut-out,
enclosure $\square 120 \times 65$ mm



1 Alternative max. $\varnothing 55$ mm

2 Support section may also be rotated through 90°

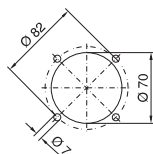
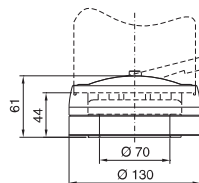
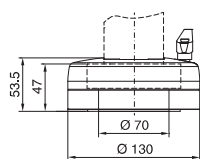
Coupling, system 60/120

for command panels with support arm connection $\varnothing 130$ mm Innovations 2012, page 38

CP 6206.300

CP 6212.300

Mounting cut-out,
enclosure $\varnothing 130$ mm



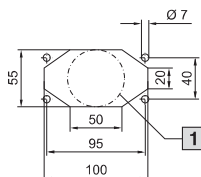
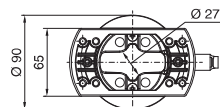
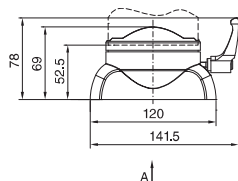
Coupling, system 60

for command panels with support arm connection $\square 120 \times 65$ mm Innovations 2012, page 39

CP 6206.340

View A

Mounting cut-out,
enclosure $\square 120 \times 65$ mm



1 Alternative max. $\varnothing 55$ mm

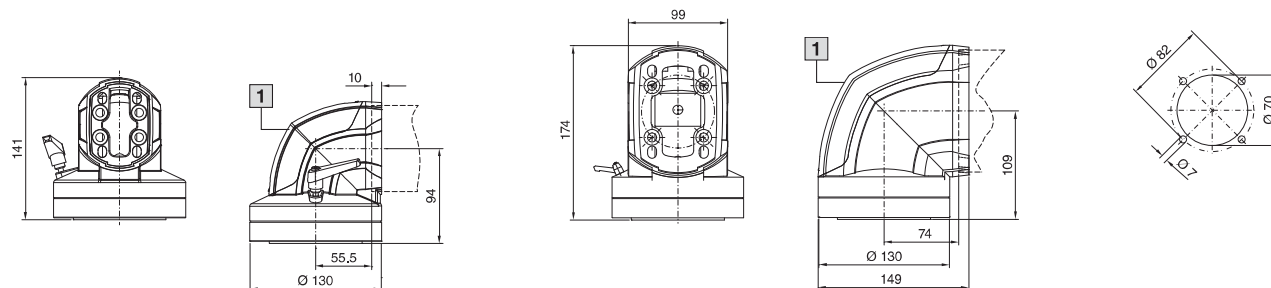
Angle coupling 90°, system 60/120

for command panels with support arm connection Ø 130 mm Innovations 2012, page 39

CP 6206.380

CP 6212.380

Mounting cut-out,
enclosure Ø 130 mm



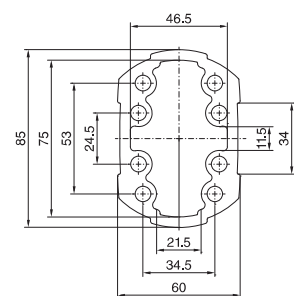
1 Removable cover

Support section, system 60/120/180, solid and 120/180, open

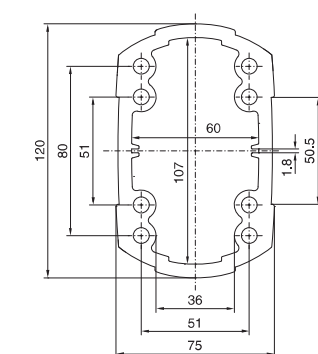
Innovations 2012, page 30/31

Support section closed

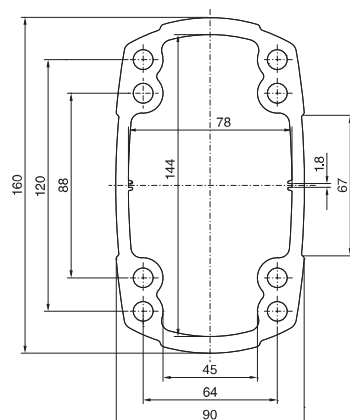
Support section open



Length mm	Support section, system 60	
	Closed	Open
	Model No. CP	
250	6206.025	—
500	6206.050	—
1000	6206.100	—
2000	6206.200	—



Length mm	Support section, system 120	
	Closed	Open
	Model No. CP	
250	6212.025	—
500	6212.050	6212.150
1000	6212.100	6212.110
2000	6212.200	6212.210



Length mm	Support section, system 180	
	Closed	Open
	Model No. CP	
500	6218.050	6218.150
1000	6218.100	6218.110
2000	6218.200	6218.210

