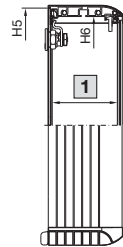
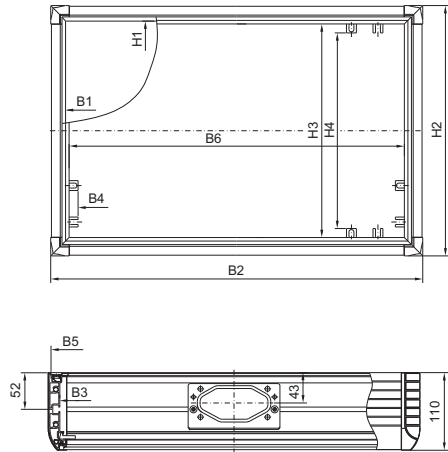
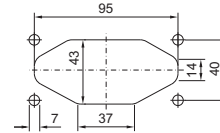


### Optipanel

Standard range, installation depth 100 mm, support arm connection □ 120 x 65 mm



Support arm connection □ 120 x 65 mm  
for CP 6380.000, CP 6380.020,  
CP 6380.040, CP 6380.400



1 Max. installation depth 100 mm

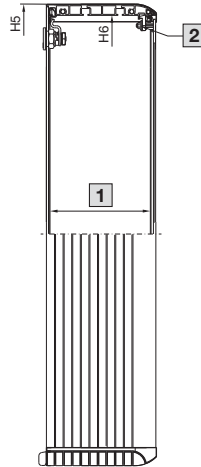
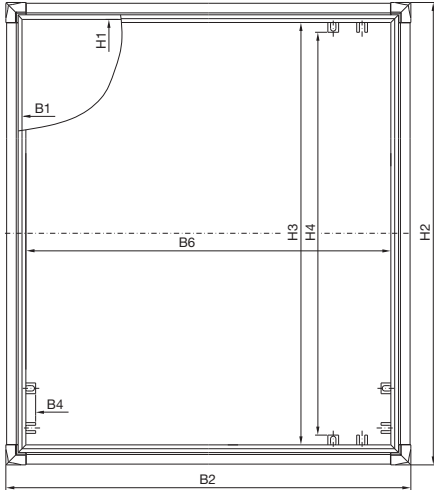
Model No. CP	Standard range			
	6380.020	6380.000	6380.040	6380.400
Support arm connection	□ 120 x 65 mm	□ 120 x 65 mm	□ 120 x 65 mm	□ 120 x 65 mm
B1 = Width of front panel	430	482.6	482.6	520
H1 = Height of front panel	343	310.3	354.8	400
Max. installation depth	100	100	100	100
Overall depth	110	110	110	110
B2 = Overall width	474	526.6	526.6	564
B3 = Clearance width between enclosure sections	441	493.6	493.6	531
B4 = Clearance width between the retaining claws of the mounting kit	397	449.6	449.6	487
B5 = Width of rear panel	466	518.6	518.6	556
B6 = Clearance width for assembly	422	474.6	474.6	512
H2 = Overall height	387	354.3	398.8	444
H3 = Clearance height for assembly	335	302.3	346.8	392
H4 = Clearance height between the retaining claws of the mounting kit	310	277.3	321.8	367
H5 = Height of rear panel	379	346.3	390.8	436
H6 = Clearance height between enclosure sections	354	321.3	365.8	411

# Enclosures

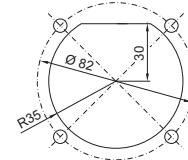
## Optipanel

### Optipanel

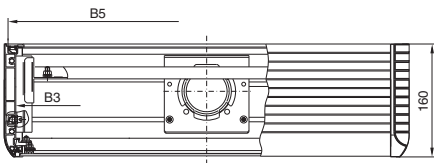
Standard range, installation depth 150 mm, support arm connection Ø 130 mm



Support arm connection Ø 130 mm  
for CP 6380.410, CP 6380.510,  
CP 6380.610



- 1 Max. installation depth 150 mm
- 2 Torque approx. 1 Nm

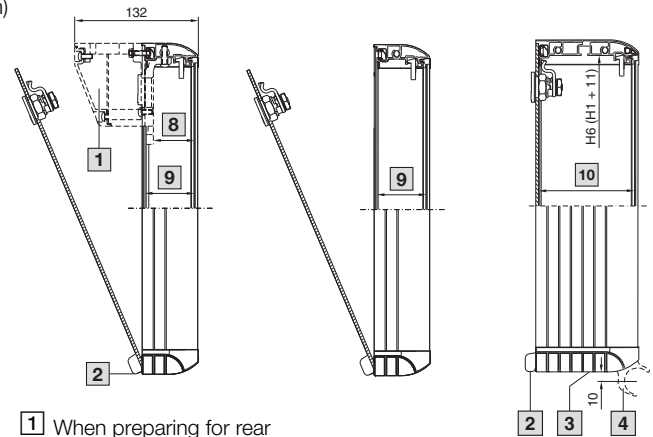
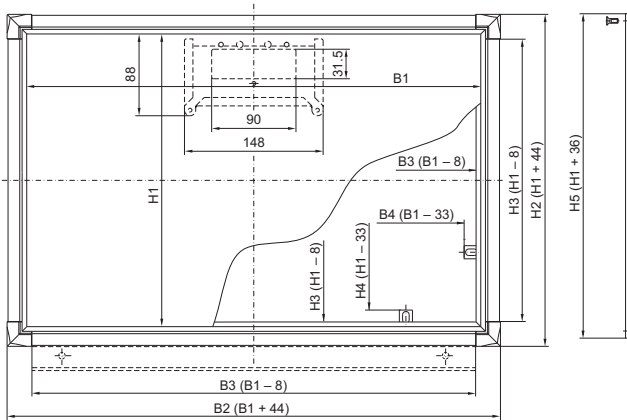


Model No. CP	Standard range		
	6380.410	6380.510	6380.610
Support arm connection	Ø 130 mm	Ø 130 mm	Ø 130 mm
B1 = Width of front panel	520	520	520
H1 = Height of front panel	400	500	600
Max. installation depth	150	150	150
Overall depth	160	160	160
B2 = Overall width	564	564	564
B3 = Clearance width between enclosure sections	531	531	531
B4 = Clearance width between the retaining claws of the mounting kit	487	487	487
B5 = Width of the rear panel	556	556	556
B6 = Clearance width for assembly	512	512	512
H2 = Overall height	444	544	644
H3 = Clearance height for assembly	392	492	592
H4 = Clearance height between the retaining claws of the mounting kit	367	467	567
H5 = Height of rear panel	436	536	636
H6 = Clearance height between enclosure sections	411	511	611

### Optipanel

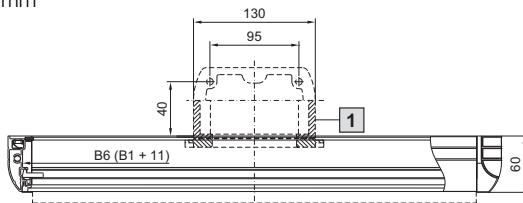
#### Installation depth

(may be selected using the operating housing configurator at [www.rittal.com](http://www.rittal.com))

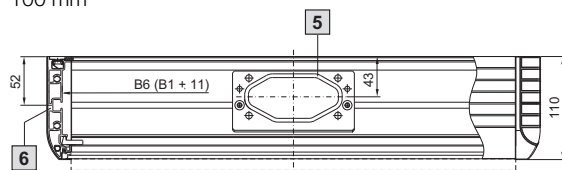


- 1 When preparing for rear support arm connection  $\square$  120 x 65 mm
- 2 Hinge
- 3 Cable tube
- 4 When preparing for keyboard housings
- 5 Preparation for support arm connection  $\square$  120 x 65 mm
- 6 Channels for inserting the spring nuts M5
- 7 Preparation for support arm connection  $\varnothing$  130 mm
- 8 Max. installation depth 41 mm
- 9 Max. installation depth 50 mm
- 10 Max. installation depth 100 mm

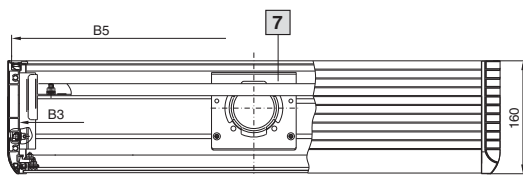
50 mm



100 mm



150 mm



#### Width dimensions:

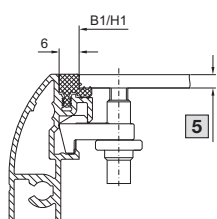
- B1 = Width of front panel
- B2 = Overall width
- B3 = Clearance width between enclosure sections
- B4 = Clearance width between the retaining claws of the mounting kit
- B5 = Width of rear panel (B1 + 36)
- B6 = Clearance width for assembly

#### Height dimensions:

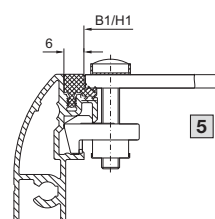
- H1 = Height of front panel
- H2 = Overall height
- H3 = Clearance height between enclosure sections
- H4 = Clearance height between the retaining claws of the mounting kit
- H5 = Height of rear panel
- H6 = Clearance height for assembly

#### Front design (may be selected using the operating housing configurator at [www.rittal.com](http://www.rittal.com))

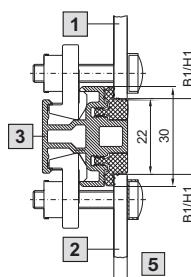
Front panel screw-fastened from inside



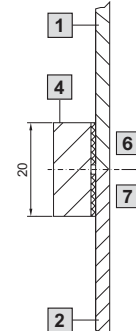
Front panel screw-fastened from outside



Cross member



Sealing bar



- 1 Front panel 1
- 2 Front panel 2
- 3 Cross member
- 4 Sealing bar
- 5 Max. 5 mm
- 6 H1 top
- 7 H1 bottom

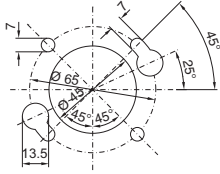
# Enclosures

## Optipanel

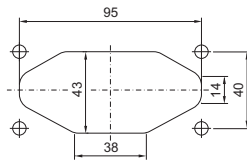
### Optipanel

#### Support arm, wall and pedestal connection

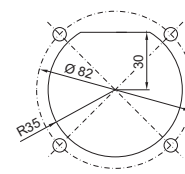
CP 40, steel  
For installation depths 100/150 mm



□ 120 x 65 mm  
For installation depth 100 mm

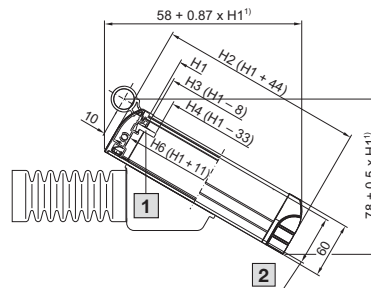
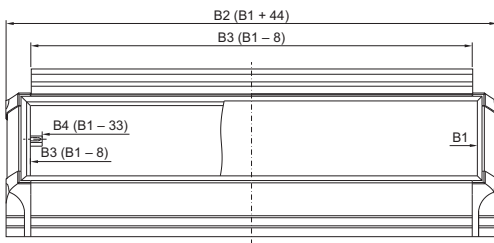


Ø 130 mm  
For installation depth 150 mm



#### Keyboard housing (may be selected using the operating housing configurator at [www.rittal.com](http://www.rittal.com))

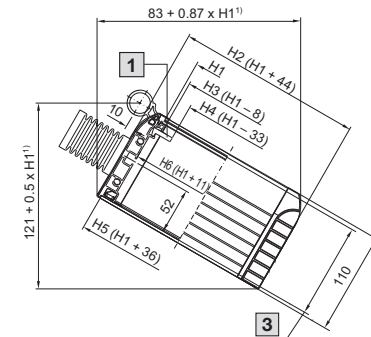
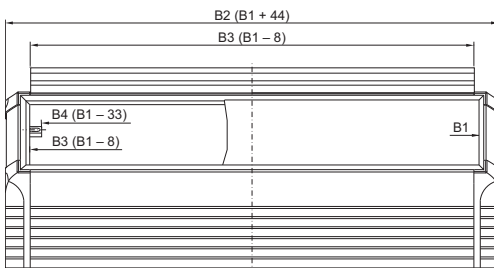
Installation depth 50 mm



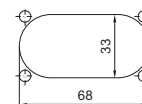
- 1 CP 6053.XXX: M5  
CP 6058.XXX: M4
- 2 Max. installation depth 50 mm
- 3 Max. installation depth 100 mm

1) Applies to a tilting angle of 30° to the horizontal

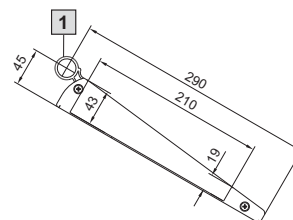
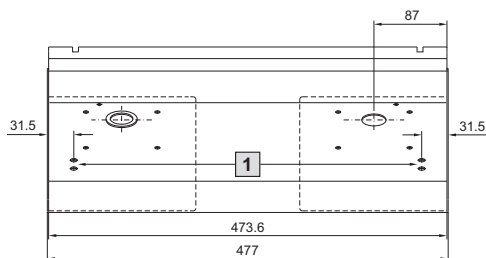
Installation depth 100 mm



Cross-section  
Cable tube connection

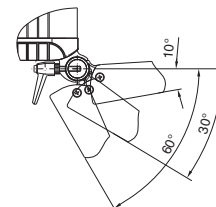


Support for keyboards SM 2383.000  
for front panel width B1 = 482.6 mm



1 Hinged frame connector

Rotation range



- 1 Prepared for mouse pad support, vertically hinged SM 2383.020

#### Width dimensions:

B1 = Width of front panel  
B2 = Overall width  
B3 = Clearance width between enclosure sections  
B4 = Clearance width between the retaining claws of the mounting kit

B5 = Width of rear panel (B1 + 36)  
B6 = Clearance width for assembly

#### Height dimensions:

H1 = Height of front panel  
H2 = Overall height  
H3 = Clearance height between enclosure sections

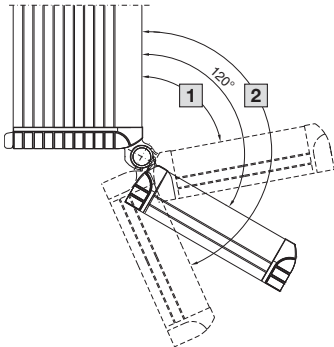
H4 = Clearance height between the retaining claws of the mounting kit

H5 = Height of rear panel  
H6 = Clearance height for assembly

### Optipanel

#### Keyboard housing connection

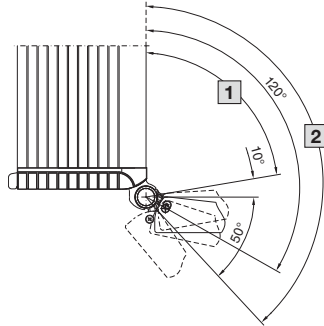
Frame hinge connector  
with Optipanel keyboard housing



Tilting angle infinitely adjustable  
from 80° to 155°

- 1** Min. 80°
- 2** Max. 155°

Frame hinge connector  
with support for keyboards



Tilting angle infinitely adjustable  
from 80° to 140°

- 1** Min. 80°
- 2** Max. 140°