

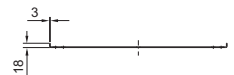
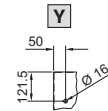
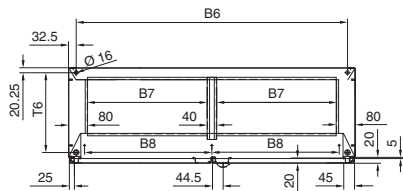
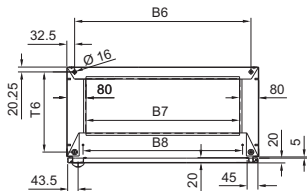
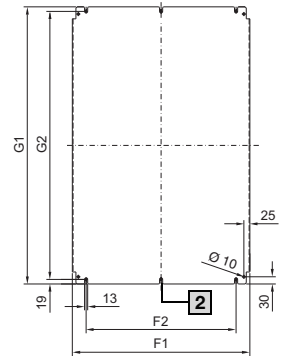
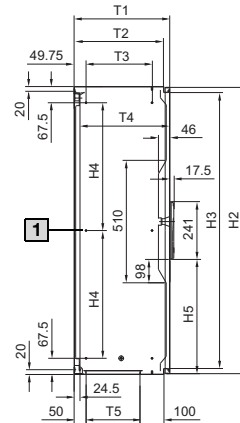
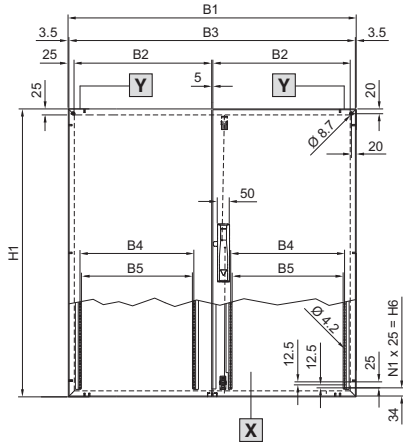
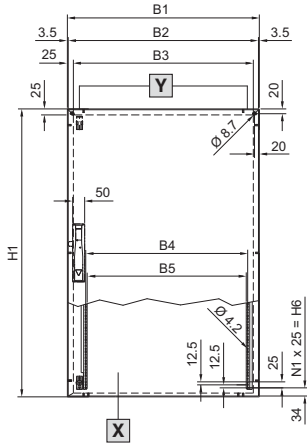
Kytkäntäkaapit

Kytkäntäkaapit

Järjestelmäkaapit CM

CM 5110.500 – 5117.500

CM 5118.500 – 5123.500



Lattiakinnityksen mitat: B6, T6

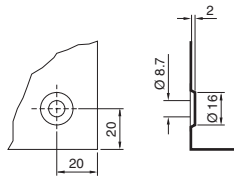
Seinäkiinnityksen mitoitus

X Näkymä oven sisäpuolelta

Y Reikä nostosilmukalle

1 Puuttuu, kun H = 800

2 Vain kaappileveysillä alk. 1 000 mm



Til.nro CM	Kaapin leveys mm								Kaappikorkeus mm								Kotelon syvyys mm						Asennuslevy			
	B1	B2	B3	B4	B5	B6	B7	B8	H1	H2	H3	H4	H5	H6	N1	T1	T2	T3	T4	T5	T6	F1	F2	G1	G2	
5110.500	600	593	550	475	463	535	440	465	800	793	750	665	276	725	29	400	374,5	275	373	224,5	334	540	425	755	717	
5111.500	600	593	550	475	463	535	440	465	1000	993	950	432,5	376	925	37	400	374,5	275	373	224,5	334	540	425	955	917	
5112.500	600	593	550	475	463	535	440	465	1200	1193	1150	532,5	476	1125	45	300	274,5	175	273	124,5	234	540	425	1155	1117	
5113.500	600	593	550	475	463	535	440	465	1200	1193	1150	532,5	476	1125	45	400	374,5	275	373	224,5	334	540	425	1155	1117	
5114.500	800	793	750	675	663	735	640	665	1000	993	950	432,5	376	925	37	300	274,5	175	273	124,5	234	740	625	955	917	
5115.500	800	793	750	675	663	735	640	665	1000	993	950	432,5	376	925	37	400	374,5	275	373	224,5	334	740	625	955	917	
5116.500	800	793	750	675	663	735	640	665	1200	1193	1150	532,5	476	1125	45	300	274,5	175	273	124,5	234	740	625	1155	1117	
5117.500	800	793	750	675	663	735	640	665	1200	1193	1150	532,5	476	1125	45	400	374,5	275	373	224,5	334	740	625	1155	1117	
5118.500	1000	494	950	375	363	935	400	432,5	1000	993	950	432,5	376	925	37	300	274,5	175	273	124,5	234	940	825	955	917	
5119.500	1000	494	950	375	363	935	400	432,5	1200	1193	1150	532,5	476	1125	45	300	274,5	175	273	124,5	234	940	825	1155	1117	
5120.500	1000	494	950	375	363	935	400	432,5	1200	1193	1150	532,5	476	1125	45	400	374,5	275	373	224,5	334	940	825	1155	1117	
5121.500	1000	494	950	375	363	935	400	432,5	1400	1393	1350	632,5	576	1325	53	300	274,5	175	273	124,5	234	940	825	1355	1317	
5122.500	1000	494	950	375	363	935	400	432,5	1400	1393	1350	632,5	576	1325	53	400	374,5	275	373	224,5	334	940	825	1355	1317	
5123.500	1200	594	1150	475	463	1135	500	532,5	1200	1193	1150	532,5	476	1125	45	400	374,5	275	373	224,5	334	1140	1025	1155	1117	