

TX CableNet Get IT. Locate IT. Patch IT.

A New Standard in Cable Management



ENCLOSURES

POWER DISTRIBUTION

CLIMATE CONTROL

IT INFRASTRUCTURE

SOFTWARE & SERVICES

TX CableNet. Get IT. Locate IT. Patch IT.

A New Standard in Cable Management.

1	Introduction
2	Key Features
3	Unique selling points (USPs)
4	Accessories
5	Summary

TX CableNet. Get IT. Locate IT. Patch IT.

Introduction

No more cable spaghetti !

The TX CableNet is a further development of the TE 8000 – building upon the already well-proven TS platform with all its benefits for the IT networking sector.

With 13 variants the TX CableNet replaces the TE 8000 and sets new standards in terms of cable management with its advanced cable routing.

Practical & smart

Modern solution for network applications

Flexibility & improved access

Greater installation freedoms of intertwined IT networks

Structured & improved

Trunked cable management for more order, security and simple handling

TX CableNet. Get IT. Locate IT. Patch IT.

Introduction

What is the
new TX
CableNet?

- The TX CableNet is “**Simple. Perfection.**”
- With this new IT rack, Rittal combines years of experience with extensive know-how in the field of network infrastructure in an extraordinary solution.
- The TX CableNet is the future-proofed solution for all users who expect “best-practice” functionality and absolute quality – a network enclosure which satisfies all demands.
- The TX CableNet enables users to move up to the next level of cable management.



TX CableNet. Get IT. Locate IT. Patch IT.

A New Standard in Cable Management.

1	Introduction
2	Key Features
3	Unique selling points (USPs)
4	Accessories
5	Summary

TX CableNet. Get IT. Locate IT. Patch IT.

Key Features

Key features of TX CableNet (1/2)

- **NEW: Portfolio, reduced rack dimensions included:**
 - 13 standard rack options, each with variable cable routing
 - W = 800 mm, H = 42/47 U, D = 800/1000 mm
 - W = 600, H = 24 U and D = 600 mm
 - With glazed or vented doors
- **Assembly:**
 - Convenient accessibility and simple removal/mounting of the side panels and doors for fast access to the rack interior
- **Applications based on the “best practice” principle:**
 - **NEW:** Covered cut-out for integrating/retrofitting a roof-mounted fan
 - Optimised cable management
 - Safe cable entry whilst maintaining the specified minimum cable bending radius
 - “Waterfall” principle for cable entry, with safe & secure routing via the roof – convenient laying rather than cumbersome pulling



TX CableNet. Get IT. Locate IT. Patch IT.

Key Features

Key features of TX CableNet (2/2)

- **Efficiency:**
 - Simple yet efficient frame concept with proven stability and flexibility
 - TS- & VX-compatible accessories for even greater configuration options, for example with the VX base/plinth system
- **Component installation:**
 - Vented doors enable installation of a mix of active and passive components in the rack
 - Covered cut-out for integrating/retrofitting a roof-mounted fan
- **Load capacity** up to 500 kg
- Optimised **delivery times** (24/48 h)



TX CableNet. Get IT. Locate IT. Patch IT.

A New Standard in Cable Management.

- 1 Introduction
- 2 Key Features
- 3 Unique selling points (USPs)**
- 4 Accessories
- 5 Summary

TX CableNet. Get IT. Locate IT. Patch IT.

Unique selling points (USPs)

General

Roof

- Roof plate welded to the rack frame, with cable entry openings with rounded edges over the whole depth on both sides, creating a “waterfall” concept
- Covered cut-out for integrating/retrofitting a roof-mounted fan

Door

- Simple mounting and removal
- Vented or glazed options

AX handle

- Additional security for protection against unauthorised access

Base

- Base configuration for optimised cable routing across the entire rack depth



Side panel

- One-piece lockable side panels with integrated security lock 3524 E

Frame

- Symmetrical frame comprising vertical sections connected with a horizontal frame at the bottom and horizontal cross rails at the top

System accessories

- TS compatibility and thus even broader configuration options
- Greater flexibility thanks to extended range of accessories

TX CableNet. Get IT. Locate IT. Patch IT.

Unique selling points (USPs)

“Waterfall” concept

Application:

Cable entry and clamping for large numbers of cables without the risk of damage or injury; convenient access to the sides of the rack

Concept:

Waterfall principle: Welded roof plate with rounded edges for optimised cable entry.

Simple entry and clamping even for large quantities of cables.
Removable cable guide struts on both sides to facilitate access from the side.

Customer benefits:

- Consideration of the critical bending radius for copper and fibre-optic cables minimises the risk of damage
- Fast and easy access from the side
- Maximum space for cable entry



TX CableNet. Get IT. Locate IT. Patch IT.

Unique selling points (USPs)

Welded, removable or screw-fastened roof plate

Application:

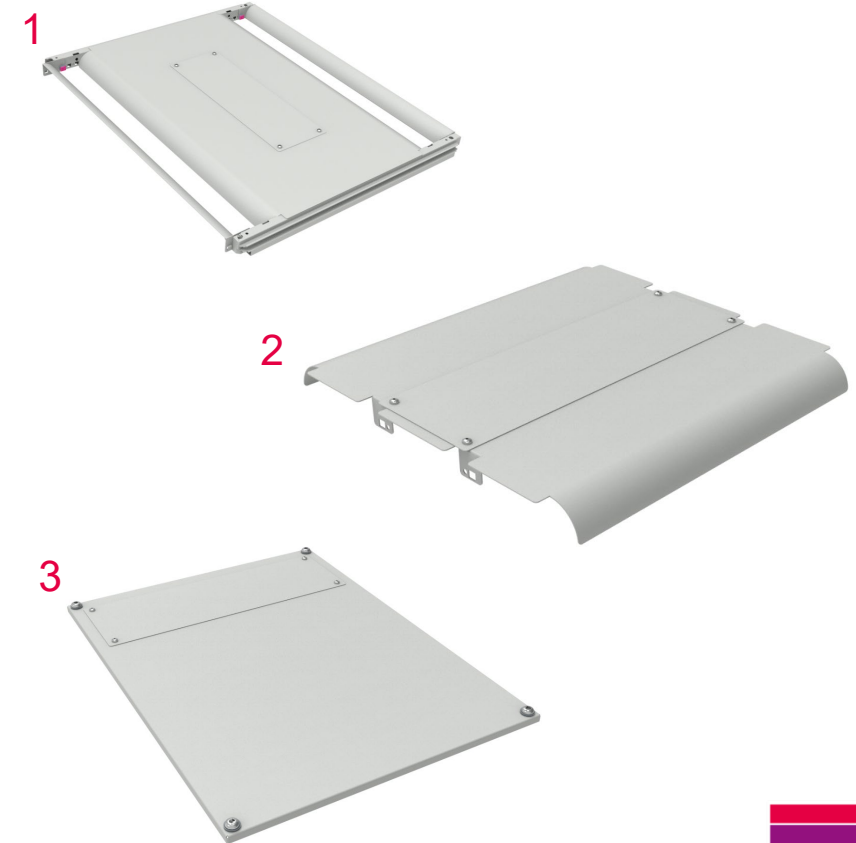
- (1) Welded roof for side cable entry
- (2) Removable roof plate for cable entry to the front and rear or to the sides
- (3) One-piece, screw-fastened roof plate plus fan cut-out for optimised cable entry

Concept:

- (1) According to the waterfall concept: Only for W=800 mm H \geq 2000 mm (42 U)
- (2) According to the waterfall concept: Only for W= 600 mm, H: 2000 mm (42 U)
- (3) Fan cut-out in the rear section at H: 1200 mm (24 U)

Customer benefits:

- (2) Starting at 600 mm depth = roof plate may be rotated 90 degrees; quick attachment (fasteners) permits flexible positioning and fastening; gap may be increased to allow for cable entry
- (3) Brush strips from the accessory range can be cut to the length you require



TX CableNet. Get IT. Locate IT. Patch IT.

Unique selling points (USPs)

Cut-out, fan mounting plate

Application:

The need for ventilation is increasing if interior installation is growing and more active components are being added

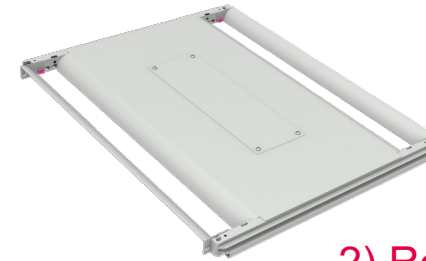
Concept:

Roof concept for retrofitted integration of a fan mounting plate for active rack ventilation

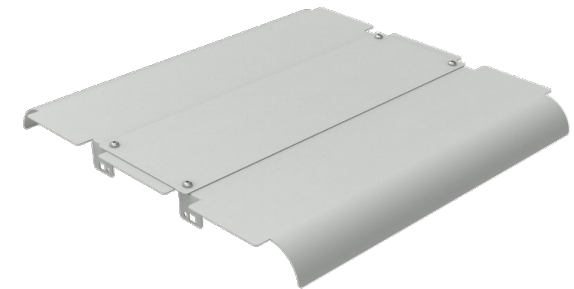
Customer benefits:

- Flexible design of rack ventilation on demand
- Retrofitted ventilation without new purchase
- Alternative for 1,200 mm high racks: spacers can raise the cover plate in favor of ventilation

1) Roof plate, welded



2) Roof plate, removable



3) Roof plate, one-piece, screwed



TX CableNet. Get IT. Locate IT. Patch IT.

Unique selling points (USPs)

Reduced rack dimensions

Application:

Integration of IT infrastructure in confined spaces or with low ceiling heights; with low utilization of interior space

Concept:

Concept of the so-called "half heights" with the available dimensions in 600 mm width and depth, as well as variants with 1,200 mm height.

Customer benefits:

- Space gain through IT racks without oversized width or depth
- No unused height units
- No power loss due to unused height units by having installations with exclusively small electronic components



TX CableNet. Get IT. Locate IT. Patch IT.

Unique selling points (USPs)

Glazed door and vented door (1/2)

Application:

1. The vented option for front and rear door allows for improved ventilation as part of a climate control concept.
2. Large bunches of cables can be hidden to improve the visual appearance when looking into the rack from outside.

Concept:

The design of door depends on the use and the specific application:

Doors are available either as vented doors with 78% perforations in support of climate control, or as glazed doors with two wide sheet steel strips over the full height on both sides to conceal the cables when viewed from the front.

Customer benefits:

- Simple one-man door mounting and removal for free access to the internal area
- Cables hidden from view by the wide sheet steel side strips
- Can be integrated into existing climate control concepts

TX CableNet. Get IT. Locate IT. Patch IT.

Unique selling points

Glazed door and vented door (2/2)

Front view



glazed door



vented

Rear view



solid



vented

TX CableNet. Get IT. Locate IT. Patch IT.

Unique selling points (USPs)

TS frame platform in the TX CableNet

Application:

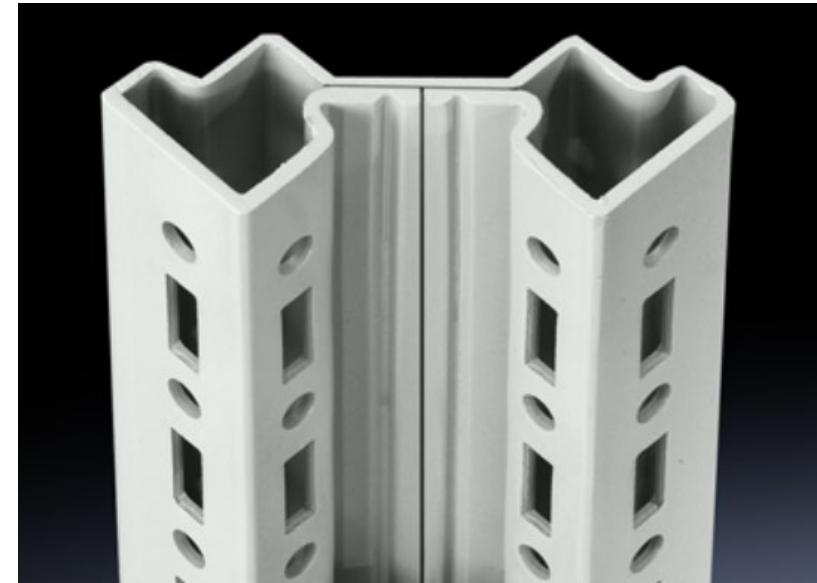
Integration of accessories and installation components into the rack via punched sections/rails

Concept:

Symmetrical welded frame comprising vertical sections connected with a horizontal frame at the bottom and horizontal cross rails at the top

Customer benefits:

- Full 25 mm pitch pattern in all 3 dimensions (WHD) enables convenient interior installation through simple hanging and fastening of the installation components
- Frame sections always offer two mounting levels at each mounting position, with direct screw fastening from outside
- Simpler component positioning thanks to integrated numbering of the punching system



TX CableNet. Get IT. Locate IT. Patch IT.

A New Standard in Cable Management.

- 1 Introduction
- 2 Key Features
- 3 Unique selling points (USPs)
- 4 Accessories**
- 5 Summary

TX CableNet. Get IT. Locate IT. Patch IT.

Accessories

TX CableNet cable tray

Application:

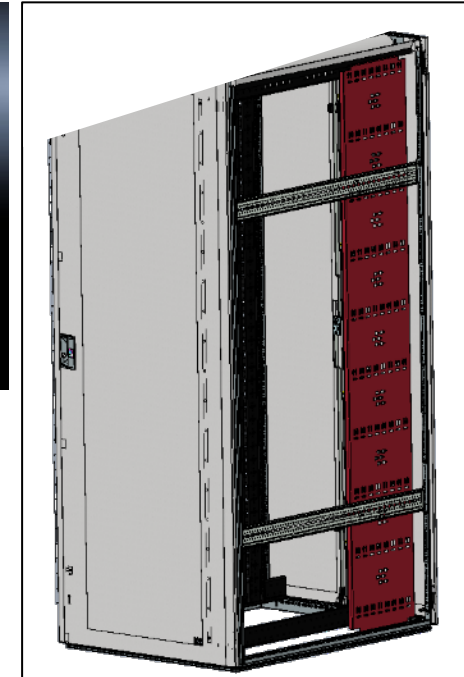
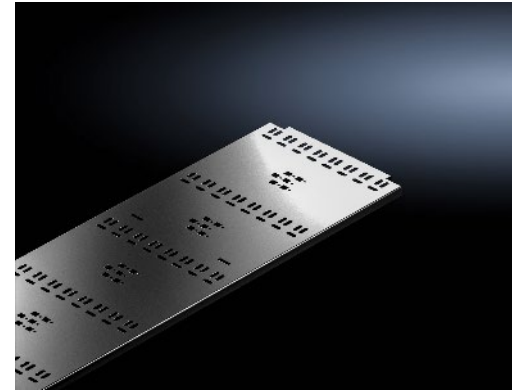
For the purpose of more structured cabling with unobstructed access in the event of the need for servicing or re-orientating the installation

Concept:

New cable routing trays in two different heights to aid vertical cable management; organisation via additional cable routing elements and structuring of the horizontal outlets to the installation components and power supplies in all IT rack systems

Customer benefits:

- Clip-mounting or alternatively screw-fastened
- Vertical cable routing and cable management in the front, rear or centre sections of the rack



TX CableNet. Get IT. Locate IT. Patch IT.

Accessories

TX CableNet cable cage

Application:

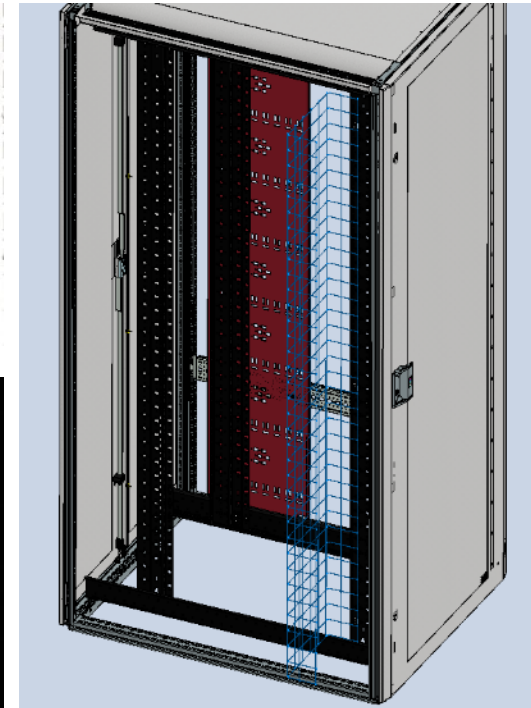
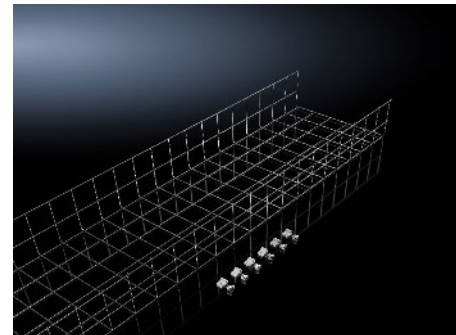
The cable cage enables the organisation of large numbers of cables between the racks in a bayed suite.

Concept:

New cable cages in two different heights to aid vertical cable management and structuring of the horizontal outlets to all installed components.

Customer benefits:

- Fast and easy assembly
- Maximum flexibility – Cables can be routed out of the cage at any chosen point



TX CableNet. Get IT. Locate IT. Patch IT.

Accessories

TX CableNet brush strip

Application:

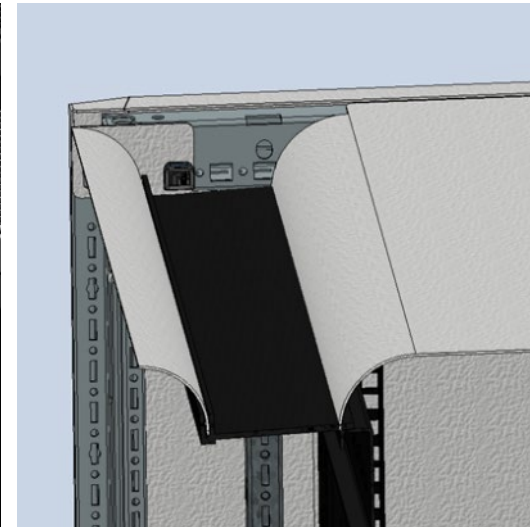
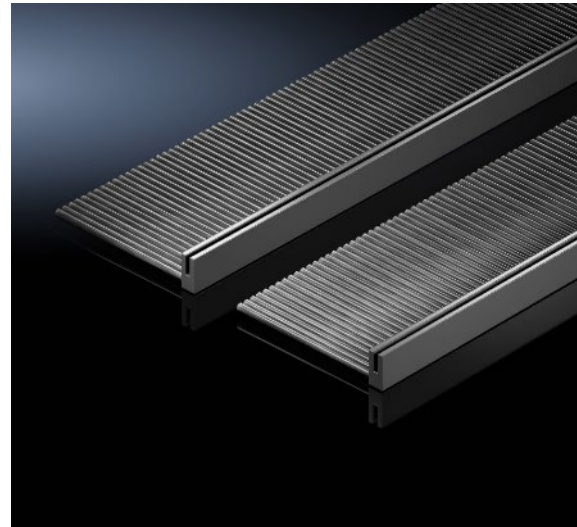
Brush strips can be fitted to conceal the cable entry openings in the roof plate in order to maintain an attractive appearance.

Concept:

New, clip-mounted brush strips for simple attachment to the underside of the removable cable guide struts

Customer benefits:

- Simple clip-mounting
- Roof cut-outs are closed and concealed from view
- Brush strip provides protection against the ingress of dust and dirt



TX CableNet. Get IT. Locate IT. Patch IT.

Accessories

AX comfort handle

Application:

Prevention of unauthorised access through installation of an optional AX comfort handle.

Concept:

The AX comfort handle is designed for the fitting of locking inserts or for the installation of standard profile commercially available half cylinders as well as push-button inserts. When unlocked, the handle tilts forwards and can be turned to open the door.

Customer benefits:

- Simple assembly
- Additional security for protection against unauthorised access



TX CableNet

Accessories

One-piece lockable side panel

Application:

Installers and service technicians require fast and simple access to all components in a network distribution rack. The one-piece lockable side panel allows for easy access to all installed components.

Concept:

Lockable side panel with security lock 3524 E. Additional security can be achieved with optional internal locking.

Customer benefits:

- Fast access from the side
- Quick and easy fixing and mounting/removal
- Simply hang in place and secure by locking
- Enhanced security by way of internal locking, which is itself only accessible via the locked doors



TX CableNet

Accessories

PDU in the zero-U space

Application:

The PDU is mounted on the 19" rails but outside the actual 19" space – access to the network cables remains unhindered.

Concept:

Space-saving, tool-free mounting of the PDU in the zero-U space between mounting level and side panel.

PDU's can be mounted side by side without the need for tools.

Customer benefits:

- Assembly concept suitable for all PDU types
- Mounting kits are included in the delivery
- Environment monitoring possible by connecting CMC III sensors



TX CableNet. Get IT. Locate IT. Patch IT.

A New Standard in Cable Management.

- 1 Introduction
- 2 Key Features
- 3 Unique selling points (USPs)
- 4 Accessories
- 5 Summary**

TX CableNet. Get IT. Locate IT. Patch IT.

Summary

Summary

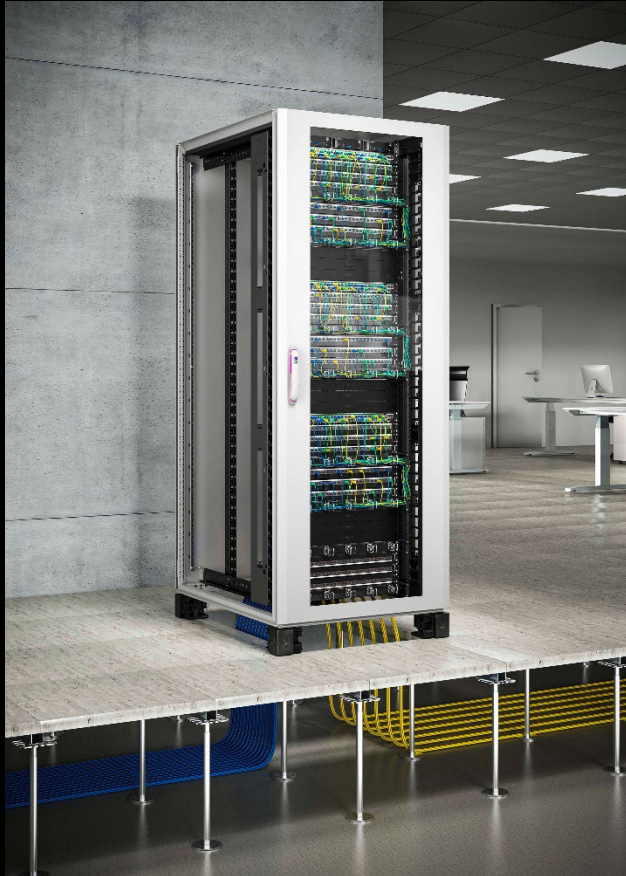
The TX CableNet raises cable management to a new level. The clearly structured IT rack portfolio, with 13 variants tailored to specific practical applications, consist of an efficient frame concept that delivers proven stability and flexibility, while also maintaining compatibility with the range of TS and VX components in order to maximise the configuration options. The TX CableNet variants, each with individually variable cable routing, allow targeted cable management where large numbers of cables are involved, and bring structure and order into IT cabling.

The TX CableNet gives you the option of retrofitting a fan mounting plate for all 3 standard plates, e.g. for optimised, active ventilation in the event of subsequent additional workload in the interior. In this case, the fan mounting plate replaces the covered roof cut-out provided for this purpose.

The “waterfall” principle for optimised cable routing from the roof gives due consideration to the critical bending radius and at the same time minimises the risk of damage to the cables.

TX CableNet. Get IT. Locate IT. Patch IT.

Discover more!



Curious? Get in touch.

You want to learn more about the TX CableNet?



Your benefit: Click [here](#) to watch full video about the network rack „TX CableNet“.



Your added value: Click [here](#) to download the brochure.



Your contact: Find your personal sales contact for your region [here](#). Our experts looking forward to meet you.