

Rittal – The System.

Faster – better – everywhere.



RiMatrix Next Generation

Modular is the way forward

ENCLOSURES

POWER DISTRIBUTION

CLIMATE CONTROL

IT INFRASTRUCTURE

SOFTWARE & SERVICES

FRIEDHELM LOH GROUP





Rittal – The System. At home in any industry

The future means **digitalization**, and digitalization in turns means an ever-growing demand for **high-quality, powerful and reliable solutions**. Rittal can support your industry sector with a product portfolio specifically tailored to your needs.

- Which products are suitable for local data processing?
- How can I cut costs?
- Which infrastructure solutions are available for existing buildings with insufficient space for a new data centre?

Our open, modular system platform [RiMatrix Next Generation](#) is the answer.



A complete system solution instead of a mishmash patchwork of items. The sum is greater than the parts

Each industry has its own specific requirements – and knowing exactly what these are is crucial in order to deliver

- a universal, adaptable system
- that combines individuality and cost efficiency
- and also meets exacting requirements.

Yours.

We devised the RiMatrix NG in close collaboration with our customers to be as modular as possible to cope with future challenges.

Uwe Scharf,
Managing Director Business Units and
Marketing, Rittal GmbH & Co. KG



Bring on the future

Looking to the future, the management of business-critical processes will need to be exceptionally powerful and reliable. IT specialists have to adapt their IT infrastructures in line with ever-changing market demands. Fast scalability of data centres and IT infrastructure as well as demand-based adaptation of computing power is crucial.

System-relevant data must be universally available at all times to support the continuous exchange of information. Often, processing data at the point of origination rather than in a remote data centre is the deciding factor.



Watch our video and discover what the RiMatrix NG has to offer.



RiMatrix Next Generation – Modular is the way forward

- A system platform for your IT infrastructure: Open, modular and flexible
- System framework: Rack, power, cooling, monitoring and security
- System benefits: Configurable products for your industry sector needs
- Continuous improvements ensure a future-proof design
- Energy efficiency and sustainability for data centres
- International approvals support global use
- Reduced planning and procurement effort

The RiMatrix NG – Maximum flexibility, security and efficiency all in one coordinated system solution comprising: Rack, power, cooling, monitoring and security.



Rittal	The principle	Applications	System framework	Your value added				
Introduction	Retail	Industry	Mobility	Healthcare	Colocation	Government	Finance	Telco



Government

Finance

Healthcare

Mobility

Retail

Colocation

Industry

Telco



The basis for your project's success!

As an open system platform with exceptional modularity and flexibility, the RiMatrix NG provides the basis for an IT infrastructure tailored to the specific requirements of almost every industry. Scalable, standard products make the RiMatrix NG the perfect future-proof investment.





Out of stock? Never!

Whether shopping online or on the high street, consumers have high expectations of the retail industry. Nowadays a more sophisticated online customer experience needs to satisfy the most demanding requirements.

- A wide selection of products with an expected high level of quality and freshness.
- Constant availability of products
- Fast, flexible delivery tailored to the customer's requirements.

RiMatrix Next Generation provides the technological basis for logging customer preferences, linking regional warehouses to the company headquarters, and thereby optimising the customer experience, logistics chains and product availability.



Data: Ready, steady, go!

Industrial control systems call for a real-time response and also require access to large data volumes. The challenges are:

- The software load impairs the stability of the production process
- Real-time communication for process automation
- Condition monitoring for local optimisation and monitoring of systems with predictive maintenance

Modular RiMatrix edge data centres process data flows directly at the point of origin to keep latencies low for real-time operations.





A traffic jam? What's that?

Most of us are familiar with critical transport incidents, but how can they be prevented? The challenges here are:

- To link autonomous vehicles to one another as well as to the control system
- To collate, deliver and process data in real time

The RiMatrix Next Generation infrastructure platform allows scalable edge data centres to be built at transport hubs. These locally based infrastructures have a low latency.



Well cared-for

It is literally critical, especially in emergency situations, to ensure a reliable high-performing IT infrastructure as the number 1 priority.

- Immediate and secure transfer of patient data
- Fast processing of information
- Data archiving and protection

The RiMatrix Next Generation system solution allows IT systems to be outsourced to relieve pressure on medical personnel in the healthcare system. A full-service package ensures the operational continuity of dedicated healthcare software and IT-as-a-service.

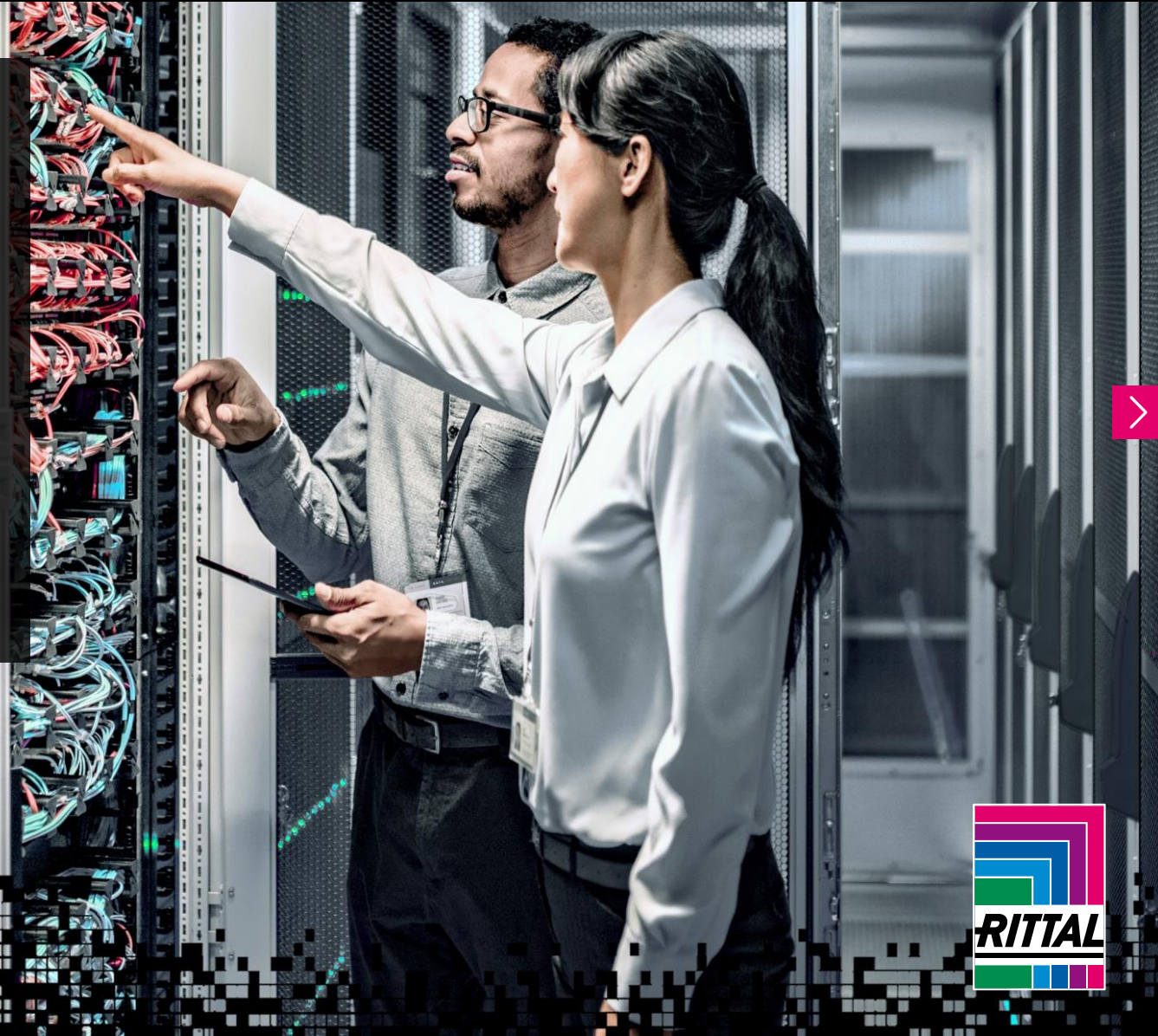


The future is togetherness

The growing colocation business creates new challenges for data centre operators.

- Ensuring cost efficiency in spite of ever-growing data volumes
- Data centre operation, storage and hosting
- Physical protection of the customer's IT hardware

For colocation applications, RiMatrix Next Generation is based on an open, modular system platform and is guaranteed to meet the high demands placed on the building infrastructure, racks, power supply, network connection, climate control, security and monitoring.





Protecting your data

The digitalization of administrative processes was only the beginning; the networking of cities and smart technologies has long since become a reality. And when these opportunities arise, systems need to adapt accordingly.

- Collating, protecting and using the enormous volume of data from traffic cameras and systems, road lighting and sensors
- Ensuring the protection of sensitive data in the cloud and in networks
- Connectivity to control sensitive devices and equipment (5G and optical fibre!)

Edge data centres based on RiMatrix Next Generation satisfy the most stringent security standards. They also collate, analyse and evaluate in real-time data from government and other municipal applications.





A worthwhile investment

The financial sector has particularly high expectations of smart IT solutions to ensure the automation, acceleration and security of transactions.

- Smart, blockchain-based controls for greater automation and process protection.
- Direct, autonomous interaction between transaction devices without any loss of data or time
- Local, revision-proof data storage

Networked data centres based on RiMatrix Next Generation provide transparent, manipulation-proof storage of transactions between two parties, for example.



Setting new standards

The fact is, it takes a huge amount of energy to operate a reliable data centre. The challenge for telecommunications providers is therefore to align high-availability, dependable data centre operation with cost and energy efficiency.

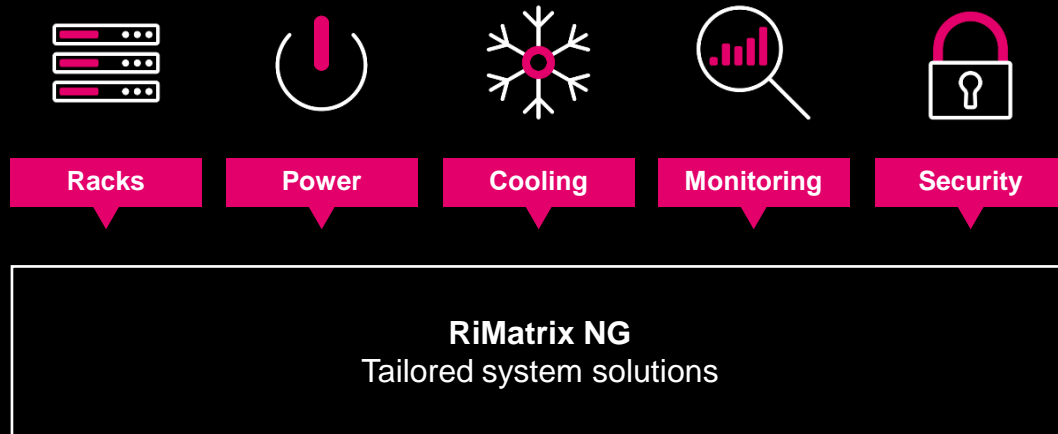
- Adapt computing performance and bandwidth in line with current and changing situations
- Store data at the network nodes
- Achieve greater scalability of IT systems with standard modules

Edge data centres based on RiMatrix Next Generation guarantee high levels of data availability and data processing coupled with low latency periods.

Rittal	The principle	Applications	System framework	Your value added	
Introduction	IT rack	IT power	IT cooling	IT monitoring	IT security



The five pillars of the RiMatrix NG complete system solution



Strong foundations

Your specific system solution based on the bedrock of individual system modules.

- Standard components with modular scalability
- From individual racks, to edge applications, to hyperscale data centres
- Advice and service from Rittal's service experts across six international locations

Uninterrupted availability, a high level of protection and maximum energy efficiency throughout the entire lifecycle of your IT infrastructure.

Competent. Globally present. A one-stop service.



Rittal	The principle	Applications	System framework	Your value added	
Introduction	IT rack	IT power	IT cooling	IT monitoring	IT security



1 IT power
Holistic, systematic energy management



2 IT rack
Network/server enclosures designed with modular future-proofed options



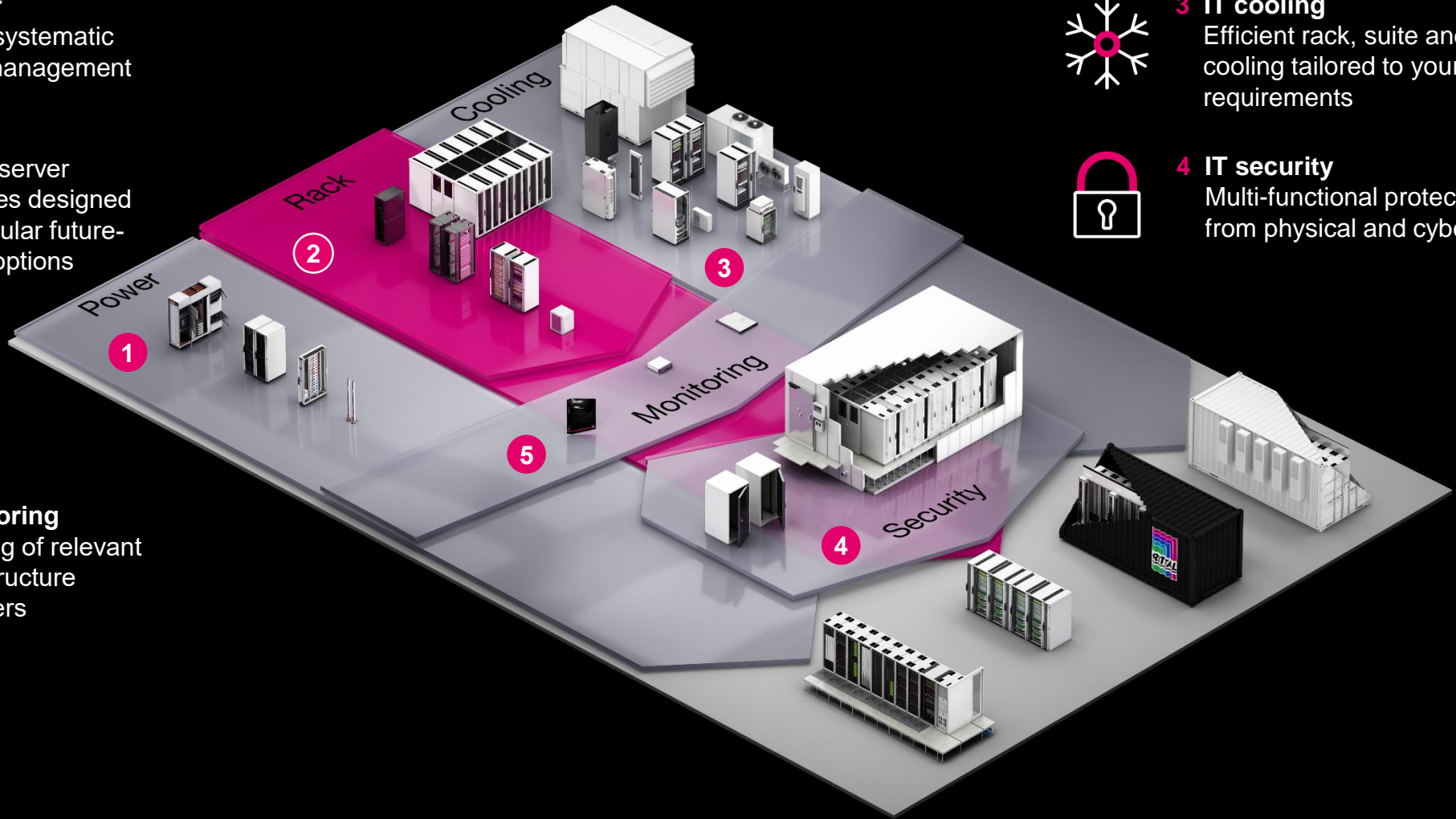
3 IT cooling
Efficient rack, suite and room cooling tailored to your requirements



4 IT security
Multi-functional protection from physical and cyber threats



5 IT monitoring
Monitoring of relevant IT infrastructure parameters





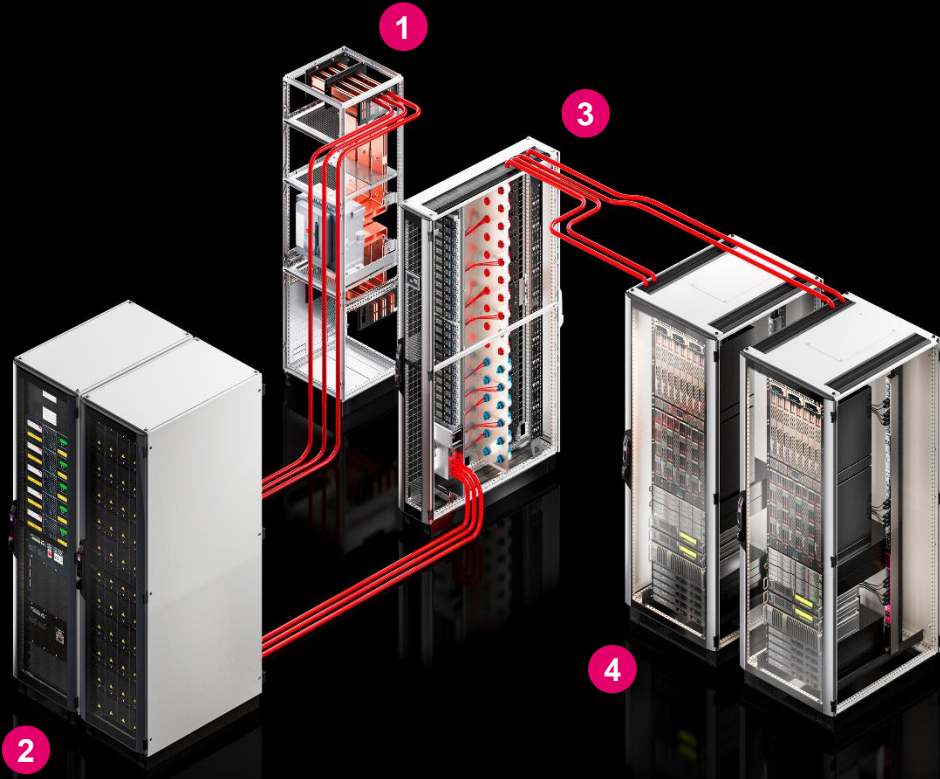
Modular kit

The VX IT is “the world’s fastest IT rack” and is the basis for the RiMatrix NG – the NEXT GENERATION Rittal IT system.

The benefits for you:

- **Speed** – Configuration and 24-h/48-h delivery promise*
- **Variety** – A wide choice of size and configuration options
- **Flexibility** – Of the interior assembly, installation and configuration with matching co-ordinated accessories
- **Scalable** – From stand alone single units to complete data centres
- **Protection** – Including designs for harsh environmental conditions

* Germany/Europe.



Comprehensive power management

Power distribution and back-up throughout the entire power supply chain is pivotal to your IT infrastructure.

The benefits for you:

- **Modularity** – Power distribution units with extensive energy measurement and monitoring functions
- **Flexibility** – Modular expansion of components
- **Efficiency** – Energy and cost efficiency with maximum availability
- **Security** – For investment and operation, with protection against failures

- 1 Low-voltage distribution centre (NSHV)
- 2 Uninterruptible power supply (UPS)
- 3 Power Distribution Rack (PDR)
- 4 IT rack with Power Distribution Unit (PDU)



Rittal	The principle	Applications	System framework	Your value added	
Introduction	IT rack	IT power	IT cooling	IT monitoring	IT security

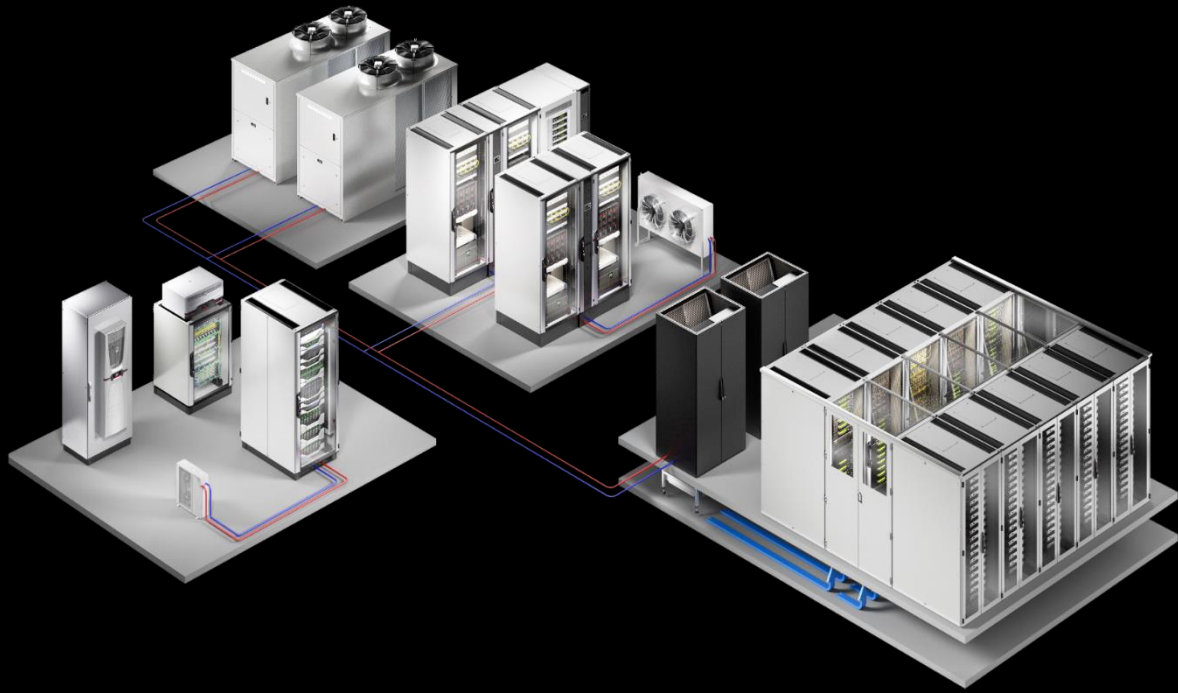


Sustainable climate control concepts:

Rittal provides a range of climate control solutions for all applications – even those in the most confined spaces – to guarantee continuous operation.

The benefits for you:

- **A precise fit** – For racks or complete data centres
- **Standardisation** – Components for rack, suite and room cooling or outdoor location
- **Compatibility** – With rack and monitoring components
- **Efficiency** – Thermal recovery, CO₂ savings, cooling with IT chillers and free cooling



Rittal	The principle	Applications	System framework	Your value added	
Introduction	IT rack	IT power	IT cooling	IT monitoring	IT security

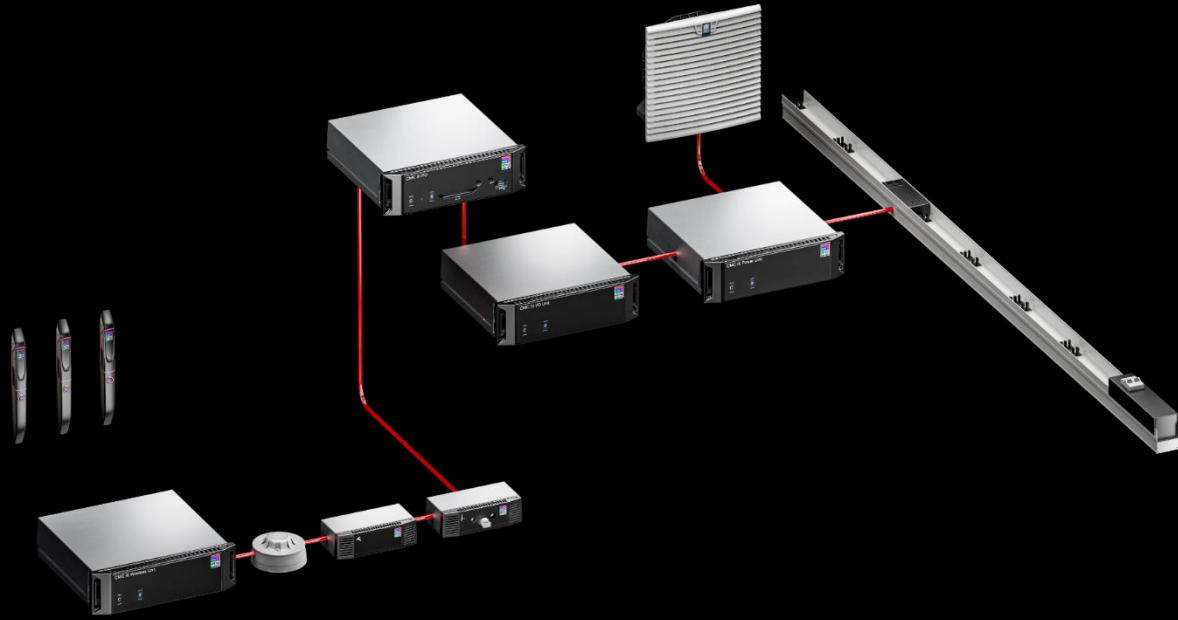


Predictive monitoring

The fact is, continuous monitoring reduces downtime – Data Center Infrastructure Management (DCIM) covers everything from monitoring of individual racks through to predictive maintenance.

The benefits for you:

- **Connection** – To superordinate monitoring or energy management systems
- **Installation** – Simple and fast with plug & play
- **Control** – Sensors for comprehensive monitoring of physical parameters in real time
- **Compatibility** – With IT rack, cooling and power distribution components





Optimum protection

Your data and infrastructure must be reliably protected from potential threats.

The benefits for you:

- **Fully comprehensive** – Complete protection from physical threats, system-tested and certified
- **Flexibility** – Room-within-a-room concepts with optional expansion
- **All in one** – Location-independent container solutions



RiMatrix Next Generation

Modular is the way forward

Curious? Please get in touch

Want to find out more about RiMatrix Next Generation? We can help you design, plan and implement your own customer-specific system solution



The benefits to you: Our webcasts covering all aspects of the RiMatrix NG system framework can be found [here](#).



Your value-added: The white paper, brochure and videos are available for downloading [here](#).



Your contacts: Find your personal sales advisor for your region [here](#). Our experts look forward to being of assistance.

