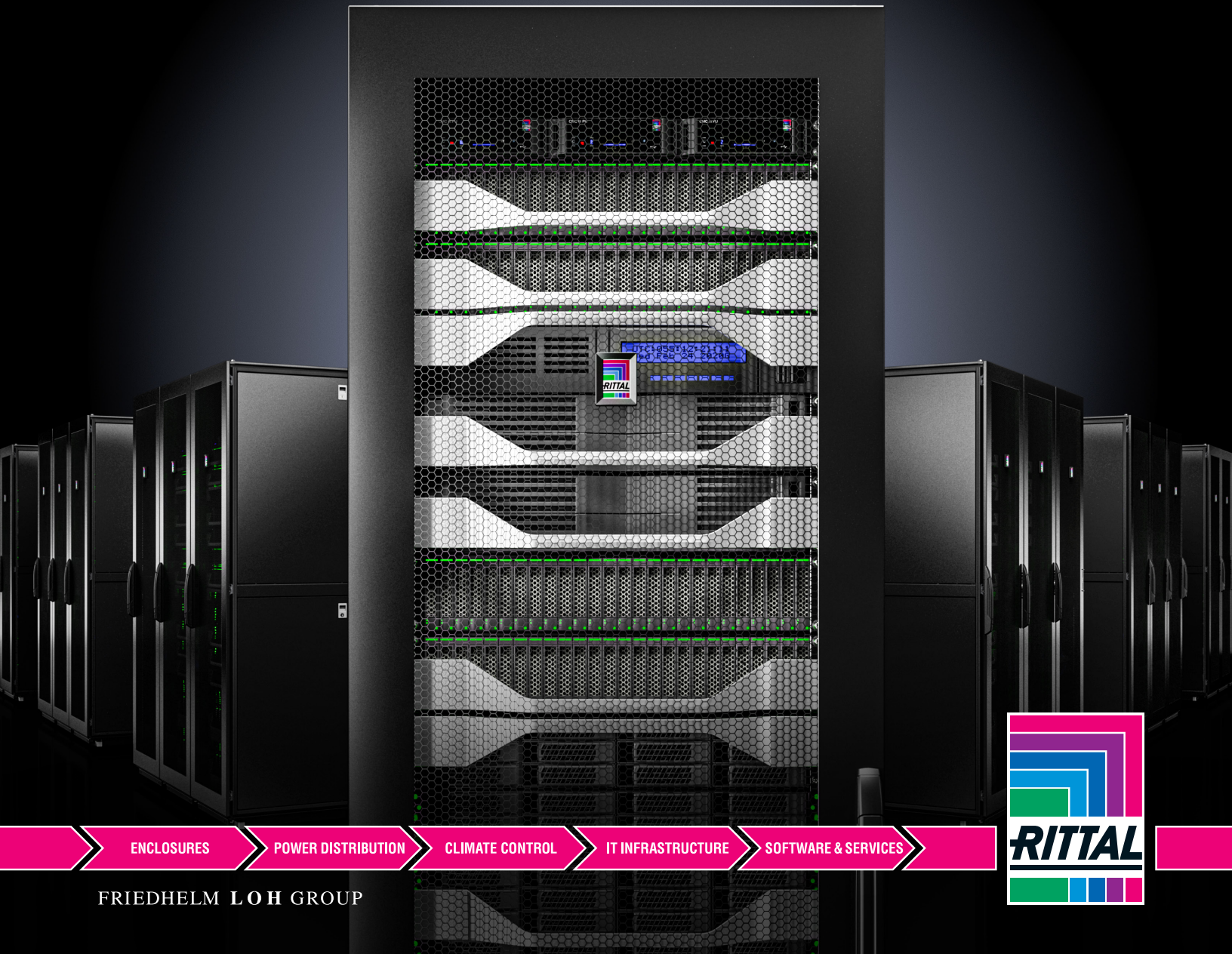


Rittal – The System.

Faster – better – everywhere.

TS IT Pro

Easy to order – Ready to ship



ENCLOSURES

POWER DISTRIBUTION

CLIMATE CONTROL

IT INFRASTRUCTURE

SOFTWARE & SERVICES

FRIEDHELM LOH GROUP





Easy to order – Ready to ship

Flexible and scalable network/server rack enclosures. Designed to meet the current IT needs of today and the growing trends of tomorrow including high density cooling and power distribution.

Rittal brings over fifty years of experience and customer feedback.

Rittal is the world's largest manufacturer of enclosure and rack systems. The TS IT Pro combines our fifty years of experience and customer feedback to offer the most flexible and scalable rack systems in the market. Rittal rack systems have been engineered as an optimized system to provide proper airflow and efficient cable management for quick and easy deployments.



TS IT Pro – Tailored for Your Application

Our Xpress Configure to Order program allows you to tailor your solution for your application. Ship complete solutions with accessories installed and eliminate unwanted waste on site. No longer worry about having to track loose components and figuring out how to install them while on site.

Tailor your rack solution today.

Contact us at +1 800-477-4000 or email us at rittal@rittal.us

TS IT Pro and RiMatrix NG

Rittal RiMatrix Next Generation (NG) fully integrates power, cooling, rack, management and security. This scalable, modular architecture allows for the selection of standardized components to create flexible data center solutions that are ready to deploy and operate.



Power

Wide range of power distribution systems from basic up to managed power distribution with the help of our channel partners – easy to install in the zero-U-space.



Cooling

Depending on the IT load, there are concepts with room, row or rack air conditioning.



Monitoring

CMC (Computer Multi Control): Monitoring of all relevant infrastructure parameters and convenient, web-based display. Forwarding to IT dashboards or industrial control systems.



Full Scale Data Centers

Modular and scalable

Prepared for the next generation of IT components. The modular, scalable TS IT Pro platform and accessories are future proof. The modularity ensures that a rack PDU can be easily integrated into the IT rack for tool less installation and fast deployment.

Flexible and innovative

The TS IT Pro is designed to meet a variety of customer requirements, including "ship-loadable" for transporting equipped racks to its destination. Innovative air conditioning solutions and intelligent air flow management increase the efficiency of your installation and ensures sustainable operation.

Easy to Order – Ready to Ship

One part number complete with a full feature set with everything needed for fast and easy deployment. Ships complete with perforated single front door and split rear doors keyed alike, leveling feet, casters, roof with brush baffle cable access channels, vertical cable walls with dual PDU mountings.

Made for harsh environments

Readily deploy solutions in harsh environments where IT equipment is not meant to operate.

Multi-tenant Data Center



Colocation facilities have fast become the alternative to privately-owned data centers. More organizations are migrating their workload and IT infrastructure to private, public, and hybrid cloud platforms to reduce downtime and expenses, while increasing physical security, efficiency, and power and cooling capabilities. The modern colocation facilities, featuring state-of-the-art high-density servers and revolutionary cooling systems, offer services, and often customized solutions, to address networking and computing challenges of today. The TS IT Pro is designed to keeping pace with the next generation of data center trends. With increasing densities the TS IT Pro line comes available in sizes up to 53U that can accommodate additional equipment without needing to expand floor space.

Speed of deployment

The TS IT Pro is simple to specify and easy to order. It can easily be configured with additional accessories, installed at the factory. The TS IT Pro guarantees standardization and consistency across various locations, by a partner that can ensure a continuity of supply with a global presence.


Flexible and future proof

While server technology advances and density demand increases, cooling strategies are continually evolving. The TS IT Pro is designed to seamlessly integrate or retrofit with supplemental row and rack level cooling solutions designed to address specific requirements or hotspots without impacting the existing environment or infrastructure.

A wide range of security and access control, as well as cable and air flow management accessories are available to create a robust solution.

The strength and rigidity of the TS IT Pro allows for a dynamic load capability of 2,250 lbs, enabling fully integrated systems to ship ready for deployment.

For more information about TS IT Pro please go to

 www.rittal.us/ts-it-pro



TS IT Pro



TS IT Pro configured for ready deployment. Enclosures are complete with depth adjustable 19" EIA rails, casters, right and left cable management walls each with dual PDU mounting, baying kit and locking front and rear perforated doors. Available in a range of sizes with sidewalls.

Includes

- Perforated single steel door at the front (85% perforated) 145° quick release security hinges
- Perforated steel door at the rear vertically divided (85% perforated) 145° quick release security hinges
- Roof cable access with brushed baffles
- Front and rear Comfort Handles with push button keyed door lock
- Casters
- Leveling feet
- Fully welded steel frame
- 19" EIA rails printed with U markings on the front and back of each rail
- Baying Brackets included
- M6 cage nuts (Package of 50)
- M6 mounting screws (Package of 50)
- Two moveable cable management walls with dual PDU mounting and cable manager cutouts
- Half-height quick release locking sidewalls keyed to match door locks

Material

- Carbon steel

Color

- Black RAL 9005

Certifications

- UL 60950-1
- EIA 310E
- UL 2416
- cUL

Warranty

- 5 years

with Sidewalls

Part Number	9982.202	9982.206	9982.204	9982.208	9982.210	9982.214	9982.212	9982.216
RU Height	42 U	42 U	42 U	42 U	48 U	48 U	48 U	48 U
Height with casters	79" (2012 mm)	79" (2012 mm)	79" (2012 mm)	79" (2012 mm)	90" (2279 mm)	90" (2279 mm)	90" (2279 mm)	90" (2279 mm)
Width	24" (600 mm)	24" (600 mm)	30" (750 mm)	30" (750 mm)	24" (600 mm)	24" (600 mm)	30" (750 mm)	30" (750 mm)
Depth	42" (1070 mm)	48" (1200 mm)	42" (1070 mm)	48" (1200 mm)	42" (1070 mm)	48" (1200 mm)	42" (1070 mm)	48" (1200 mm)
Door Type	Perforated front and rear	Perforated front and rear	Perforated front and rear	Perforated front and rear	Perforated front and rear	Perforated front and rear	Perforated front and rear	Perforated front and rear
Weight Capacity (Static)	3750 lb.	3750 lb.	3750 lb.	3750 lb.	3750 lb.	3750 lb.	3750 lb.	3750 lb.
Weight Capacity (Dynamic)	2250 lb.	2250 lb.	2250 lb.	2250 lb.	2250 lb.	2250 lb.	2250 lb.	2250 lb.
Net Weight of each rack	258 lb.	288 lb.	313 lb.	343 lb.	294 lb.	324 lb.	360 lb.	390 lb.
Baying Configurations	600 mm and 24"	600 mm and 24"	750 mm	750 mm	600 mm and 24"	600 mm and 24"	750 mm	750 mm

with Sidewalls

Part Number	9982.218	9982.219	9982.220	9982.221
RU Height	53 U	53 U	53 U	53 U
Height with casters	99" (2504 mm)	99" (2504 mm)	99" (2504 mm)	99" (2504 mm)
Width	24" (600 mm)	30" (750 mm)	24" (600 mm)	30" (750 mm)
Depth	42" (1070 mm)	42" (1070 mm)	48" (1200 mm)	48" (1200 mm)
Door Type	Perforated front and rear	Perforated front and rear	Perforated front and rear	Perforated front and rear
Weight Capacity (Static)	3750 lb.	3750 lb.	3750 lb.	3750 lb.
Weight Capacity (Dynamic)	2250 lb.	2250 lb.	2250 lb.	2250 lb.
Net Weight of each rack	318 lb.	395 lb.	428 lb.	506 lb.
Baying Configurations	600 mm and 24"	750 mm	600 mm and 24"	750 mm

TS IT Pro



TS IT Pro configured for ready deployment. Enclosures are complete with depth adjustable 19" EIA rails, casters, cable management walls with dual PDU mounting, baying kit and locking front and rear perforated doors. Available in a range of sizes without sidewalls.

Includes

- Perforated single steel door at the front (85% perforated) 145° quick release security hinges
- Perforated steel door at the rear vertically divided (85% perforated) 145° quick release security hinges
- Roof cable access with brushed baffles
- Front and rear Comfort Handles with push button keyed door lock
- Casters
- Leveling feet
- Fully welded steel frame
- 19" EIA rails printed with U markings on the front and back of each rail
- Baying Brackets included
- M6 cage nuts (Package of 50)
- M6 mounting screws (Package of 50)
- Two moveable cable management walls with dual PDU mounting and cable manager cutouts

Material

- Carbon steel

Color

- Black RAL 9005

Certifications

- UL 60950-1
- EIA 310E
- UL 2416
- cUL

Warranty

- 5 years

without Sidewalls

Part Number	9982.203	9982.207	9982.205	9982.209	9982.211	9982.215	9982.213	9982.217
RU Height	42 U	42 U	42 U	42 U	48 U	48 U	48 U	48 U
Height with casters	79" (2012 mm)	79" (2012 mm)	79" (2012 mm)	79" (2012 mm)	90" (2279 mm)	90" (2279 mm)	90" (2279 mm)	90" (2279 mm)
Width	24" (600 mm)	24" (600 mm)	30" (750 mm)	30" (750 mm)	24" (600 mm)	24" (600 mm)	30" (750 mm)	30" (750 mm)
Depth	42" (1070 mm)	48" (1200 mm)	42" (1070 mm)	48" (1200 mm)	42" (1070 mm)	48" (1200mm)	42" (1070 mm)	48" (1200 mm)
Door Type	Perforated front and rear	Perforated front and rear	Perforated front and rear	Perforated front and rear	Perforated front and rear	Perforated front and rear	Perforated front and rear	Perforated front and rear
Weight Capacity (Static)	3750 lb.	3750 lb.	3750 lb.	3750 lb.	3750 lb.	3750 lb.	3750 lb.	3750 lb.
Weight Capacity (Dynamic)	2250 lb.	2250 lb.	2250 lb.	2250 lb.	2250 lb.	2250 lb.	2250 lb.	2250 lb.
Net Weight of each rack	205 lb.	226 lb.	260 lb.	281 lb.	233 lb.	262 lb.	299 lb.	328 lb.
Baying Configurations	600 mm and 24"	600 mm and 24"	750 mm	750 mm	600 mm and 24"	600 mm and 24"	750 mm	750 mm

TS IT Pro Cable Management Accessories



Vertical Cable Duct

for TS IT Pro

Vertical Cable Duct installs to the EIA rails for flexible and easy cable management. Cable fingers provide for proper bend radius of cables.

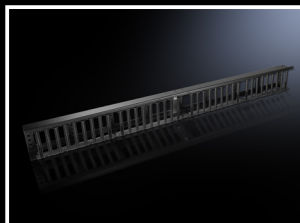
Material:

- Aluminum
- Plastic to UL 94-V0

Color:

- Black

For enclosure height	For enclosure width mm	Kit	Model No.
42 U	750 mm	1	9982.239
48 U	750 mm	1	9982.240
53 U	750 mm	1	9982.241



Quarter-turn Cable Managers

for TS IT Pro

Provides flexible and simple installation within the enclosure. Installation on side of EIA rails, enclosure frame, and PDU Cable Management wall.

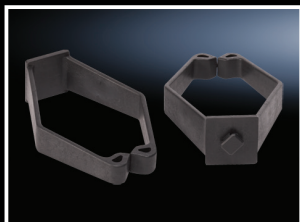
Material:

- Plastic Hook and loop
- Plastic to UL 94-V0

Color:

- Black

Version	Length	Width	Depth	Kit	Model No.
Fastener strap	17"	-	-	10	9969.599
Collection claw	-	3"	4.45"	10	9969.600



Quarter-turn Cable Management D-ring

for TS IT Pro

Provides flexible and simple installation within the enclosure. Installation on side of EIA rails, enclosure frame, and PDU Cable Management wall.

Material:

- Plastic to UL 94-V0

Color:

- Black

Size	Kit	Model No.
1.7" x 3.5"	10	9961.779
5" x 3.5"	10	9961.780



TS IT Pro Cable Management Accessories



Horizontal Cable Management

with hingeable/removable cover

1 U Horizontal, Rack Mount Cable Management with hingeable/removable cover. Side to side installation on the 19" rack mount. Pack of 2.

Installation options:

- Horizontal
- Side to side installation on EIA rails

Material:

- Aluminum
- Plastic to UL 94-V0

Color:

- Black

Height	Kit	Model No.
1 U	2	9969.736
2 U	2	9969.597



Cable management fingers

for TS IT Pro

Efficient cable management in the front and rear of the enclosure. Each kit is designed for one rail. Cable fingers are evenly spaced with rack units and provide proper bend radius for cables.

Installation options:

- Installs on vertical 19" EIA rails

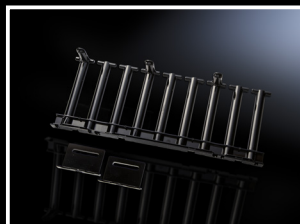
Material:

- Carbon steel
- Plastic to UL 94-V0

Color:

- Black

For enclosure height	Kit	Model No.
42 U	1	9982.272
48 U	1	9982.273
53 U	1	9982.274



Cable duct

for TS IT Pro

For organizing front to rear cabling. Mounts to the EIA rail and is adjustable for different EIA rail dimensions. Bend radius protection at each end.

Installation options:

- Installs on front and rear rail within a maximum distance of 799 mm/31.5 in and a minimum of 599 mm/23.6 in

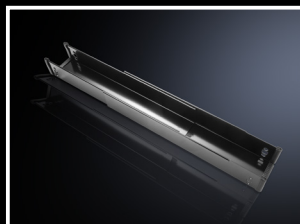
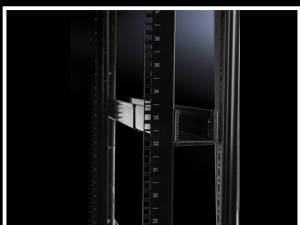
Material:

- Carbon steel

Color:

- Black

For enclosure width mm	Kit	Model No.
750 mm	1	9982.275



TS IT Pro Cable Management Accessories



Cable Management wall

Cable management wall with attachment points for tool-less quarter turn cable management accessories, T cutouts for hook and loop cable managers, and dual PDU mounting capability.

Installation options:

- Attaches to enclosure frame

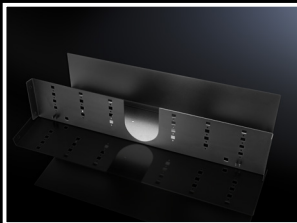
Material:

- Carbon steel

Color:

- Black

For enclosure height	Kit	Model No.
42 U	2	9982.295
48 U	2	9982.296
53 U	2	9982.297



Roof Mount Cable Manager for cable routing

Organizes overhead cable runs between racks and cable access slots in the enclosure roof.

Installation options:

- Mounts to enclosure roof in front as well as the rear

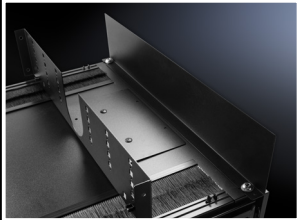
Material:

- Carbon steel

Color:

- Black

For enclosure width mm	Kit	Model No.
600 mm	1	9982.270
750 mm	1	9982.271



Roof Mount Cable Manager End Plate

End plate mounts to Roof Mount Cable Manager to shield view of cabling. One kit needed per row of Roof Mount Cable Manager.

Material:

- Carbon steel

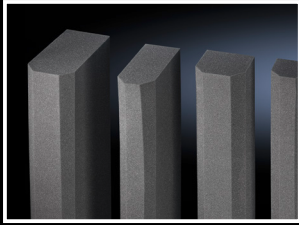
Color:

- Black

Version	Kit	Model No.
Front/rear	1	9982.238



TS IT Pro Airflow Management Accessories



Foam baffle

for TS IT Pro

Improves air flow management by preventing cold air from bypassing the IT equipment. Applicable for 600 mm wide enclosures without sidewalls. Includes baffles for both left and right sides.

Material:

- Cellular PU foam

Color:

- Black

Height units U	For enclosure width mm	Kit	Model No.
42 U	600 mm	1	9982.261
48 U	600 mm	1	9982.262
53 U	600 mm	1	9982.263



Brush baffle

for TS IT Pro

Improves air flow management by preventing cold air from bypassing the IT equipment. Brushes allow for cable routing from front to rear in the zero-U-space. Mounts to frame and center chassis blocking airflow between sidewalls and the 19" EIA rails.

Material:

- Carbon Steel support with brushes
- Bristles: Plastic, UL 94-HB

Color:

- Black

Height units U	For enclosure width mm	Kit	Model No.
42 U	750 mm	2	9982.264
48 U	750 mm	2	9982.265
53 U	750 mm	2	9982.266



Top metal baffle

for TS IT Pro

Improves airflow management by preventing cold air from bypassing the IT equipment. Mounts to the top horizontal frame at the front of the rack.

Installation options:

- Attaches to enclosure frame

Material:

- Carbon steel

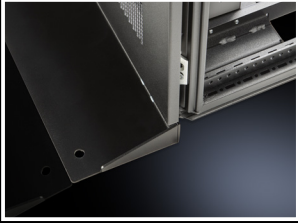
Color:

- Black

For enclosure width mm	Kit	Model No.
600 mm	1	9982.267
750 mm	1	9982.268



TS IT Pro Rack Accessories



Anti-Tip brackets

for TS IT Pro

Provides anti-tip support when installing or changing equipment in a standalone rack.

Installation options:

- Mounts to front of enclosure

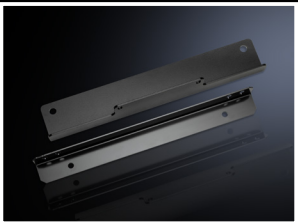
Material:

- Carbon steel

Color:

- Black

For enclosure width mm	Kit	Model No.
600 mm	1	9982.291
750 mm	1	9982.292



Bolt down bracket kit

for TS IT Pro

Front and rear bolt down brackets for securely attaching enclosure to the floor. Bracket is adjustable to accommodate the use of leveling feet. Front bracket blocks front to rear airflow under the rack.

Installation options:

- Attaches to front and rear of cabinet

Material:

- Carbon steel

Color:

- Black

For enclosure width mm	Kit	Model No.
600 mm	1	9982.293
750 mm	1	9982.294



Handles

for TS IT Pro

Handles to allow for alternate locking systems.

Installation options:

- Mounts to front and rear doors

Material:

- Die cast zinc

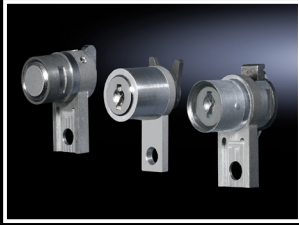
Color:

- Black

Description	Kit	Model No.
Comfort handle for semi-cylinder inserts	1	8611.360
3 digit combination security handle	1	7720.801
Comfort handle for round insert	1	8611.350



TS IT Pro Rack Accessories



Lock Inserts

for TS IT Pro

Comfort Handle for round inserts

Installation options:

- Installs on standard handle in enclosure

Description	Kit	Model No.
Push-button, key lock with 2123 lock	1	8611.200
Push-button without Key Lock	1	8611.190
Lock Number 3524	1	8611.180



Lock Inserts

for TS IT Pro

Comfort Handle for semi-cylinder inserts

Installation options:

- For installation in alternative Comfort Handle part number 8611.360 and Combination Security Handle 7200.801

Description	Kit	Model No.
Push button, key lock with 2123 lock	1	2469.000
Push Button without Key Lock	1	2468.000
Lock Number 3524 E	1	2467.000



Side Panels

for TS IT Pro

Half-height quick release lockable side panels, for easy access for cable and equipment installations. Kit includes left and right side panels.

Installation options:

- Flush mounted with keyed lock inserts, matching door keys

Material:

- Carbon steel

Color:

- Black

Height units U	For enclosure width mm	Kit	Model No.
42 U	1070 mm	1	9982.234
42 U	1200 mm	1	9982.235
48 U	1070 mm	1	9982.236
48 U	1200 mm	1	9982.237
53 U	1070 mm	1	9982.299
53 U	1200 mm	1	9982.300

TS IT Pro Rack Accessories



PDU Mount Bracket

for TS IT Pro

For mounting additional PDU's in the zero-U space. Accepts standard PDU mounting buttons. Kit includes 2 brackets for mounting a single PDU.

Installation options:

- Mounts to 19" EIA rails in the zero-U space

Material:

- Carbon steel

Color:

- Black

For enclosure width mm	Kit	Model No.
750 mm	1	9982.276

Rittal – The System.

Faster – better – everywhere.

- Enclosures
- Power Distribution
- Climate Control
- IT Infrastructure
- Software & Services

Rittal North America LLC

Woodfield Corporate Center
425 North Martingale Road, Suite 400 • Schaumburg, Illinois 60173 • USA
Phone: 937-399-0500 • Toll-free: 800-477-4000
Email: rittal@rittal.us • Online: www.rittal.com

Rittal Systems Ltd.

6485 Ordan Drive • Mississauga, Ontario L5T 1X2 • Canada
Phone: 905-795-0777 • Toll-free: 800-399-0748
E-Mail: marketing@rittal.ca • Online: www.rittal.ca

Rittal Mexico

Dr. Roberto Gayol 1219-1B • Col. Del Valle Sur, 03100 • Mexico, D.F.
Phone: (+52) (55) 5559-5369 • Toll-free: 01 800 8 Rittal (748.825)
E-Mail: info@rittal.com.mx • Website: www.rittal.com.mx

US542 ■ 9/21

ENCLOSURES

POWER DISTRIBUTION

CLIMATE CONTROL

IT INFRASTRUCTURE

SOFTWARE & SERVICES



FRIEDHELM LOH GROUP

For additional technical information visit www.rittal.com