

Rittal – The System.

Faster – better – everywhere.

Enclosures, compact housings and accessories

for Bayerische Motoren Werke AG (BMW), Best Practice 3.0



ENCLOSURES

POWER DISTRIBUTION

CLIMATE CONTROL

IT INFRASTRUCTURE

SOFTWARE & SERVICES

FRIEDHELM LOH GROUP



Rittal – The System.

Faster – better – everywhere.

Enclosures, compact housings and accessories for Bayerische Motoren Werke AG (BMW) Best Practice 3.0

Version 1.10

Issue date: April 2024

Publisher:

RITTAL GmbH & Co. KG

Dept. VI-TP

35745 Herborn, Germany

ENCLOSURES

POWER DISTRIBUTION

CLIMATE CONTROL

IT INFRASTRUCTURE

SOFTWARE & SERVICES

FRIEDHELM LOH GROUP



Contents

| | |
|--|----|
| Baying enclosure system VX25..... | 4 |
| Enclosures TMO | 7 |
| CE power supply enclosures TKB..... | 9 |
| Compact enclosures AX..... | 11 |
| Bus enclosures KX..... | 13 |
| E-Boxes KX | 14 |
| CA / CE Floor unit TKB | 15 |
| Accessories | 17 |
| LED light | 26 |
| Climate control accessories | 27 |
| Accessories for compact enclosures | 28 |
| Change journal | 29 |



Baying enclosure system VX25



Housing:

Symmetrical rolled frame construction, consisting of solid and profiled hollow sections with 25 mm pattern of holes.

Frame with integrated M6 blind-rivet nuts for the protection category-conform fastening of fitting component to the section.

All sections have chamfered edges.

Horizontal sections with additional channel above the PU foam seal.

Seamless, identical sections with two mounting levels accessible internally and externally for space-saving and fast interior installation.

Square holes on all sides for the deployment of captive nuts and bolts up to M8.

Welded base frame with integrated base strengthening for fastening to the underside of the enclosure inner side, 3-part gland plate, removable and replaceable, mounted.

Bayable on all sides.

Maximum loading 15000 N.

Door:

- With foamed-in PU seal, with removable rectangular tubular frame with holes in 25 mm pitch pattern and integrated hammer-head cut-outs for cable clamping
- With rod lock latchable in four positions, hinges with screw-fastened limit stops, door hinges may be swapped to opposite side, with non-detachable hinge pins, 17 mm floor clearance

Rear panel and roof plate:

- With foamed-in PU seal
- Rear panel and roof plate screw-fastened, and removable
- Rear panel with positioning aid
- Roof with M12 roof fastening bolts

Mounting plate:

- C-folds at the sides, depth-adjustable on a 25 mm pitch pattern via integrated plastic slide pieces and reusable mounting rails
- Including mounting pattern to simplify the positioning of components

Baying enclosure system VX25

Panels / potential equalisation:

- Roof, door, rear panel, gland plates included in the Supply includes
- Side panels are available separately as accessories
- Rear panel, roof plates and gland plates are connected conductive with the frame (automatic potential equalisation) in accordance with DIN 62 208 and prepared for the additional fastening of earth straps

QR code:

- QR code printed on the roof, door, mounting plate, rear panel and rating plate for the unique identification and for easy access to relevant product information and documentation, as well as for the unambiguous tracking of the individual parts

Protection category:

- Protection category in accordance with IEC 60 529 (with mounted side panels): IP 55
- Protection category in accordance with UL 508A: Type 12
- Impact protection in accordance with IEC 62 262: IK10

Material:

- Enclosure frame, roof plate, rear panel and gland plates:
- 1.5 mm sheet steel
- 2 mm sheet steel doors

Surface finish:

- Enclosure frame dipcoat-primed
- Panels dipcoat-primed and powder-coated, textured
- Gland plates zinc-plated

Colour:

- Enclosure RAL 7035, pale grey.

| | | | | |
|---------------------|-----------------|-----------------|-----------------|-----------------|
| Width (mm) | 600 | 800 | 800 | 1200 |
| Height (mm) | 1800 | 1800 | 1800 | 1800 |
| Depth (mm) | 500 | 500 | 500 | 500 |
| Model No. | 8685.000 | 8880.000 | 8885.000 | 8285.000 |
| Doors | 1 | 2 | 1 | 2 |
| Weight (kg) | 93.8 | 122.5 | 115.8 | 173.3 |
| Mounting plate (mm) | 499 x 1696 | 699 x 1696 | 699 x 1696 | 1099 x 1696 |

| | | | | |
|---------------------|-----------------|-----------------|-----------------|-----------------|
| Width (mm) | 600 | 800 | 800 | 1200 |
| Height (mm) | 1800 | 1800 | 1800 | 1800 |
| Depth (mm) | 600 | 600 | 600 | 600 |
| Model No. | 8686.000 | 8881.000 | 8886.000 | 8286.000 |
| Doors | 1 | 2 | 1 | 2 |
| Weight (kg) | 96.8 | 120.3 | 116.0 | 179.9 |
| Mounting plate (mm) | 499 x 1696 | 699 x 1696 | 699 x 1696 | 1099 x 1696 |

Baying enclosure system VX25

| | | | | |
|---------------------|-----------------|-----------------|-----------------|-----------------|
| Width (mm) | 600 | 800 | 1000 | 1200 |
| Height (mm) | 2000 | 2000 | 2000 | 2000 |
| Depth (mm) | 500 | 500 | 500 | 500 |
| Model No. | 8605.000 | 8805.000 | 8005.000 | 8205.000 |
| Doors | 1 | 1 | 2 | 2 |
| Weight (kg) | 101.3 | 126.3 | 157.1 | 190.6 |
| Mounting plate (mm) | 499 x 1896 | 699 x 1896 | 899 x 1896 | 1099 x 1896 |

| | | | | |
|---------------------|-----------------|-----------------|-----------------|-----------------|
| Width (mm) | 600 | 800 | 1000 | 1200 |
| Height (mm) | 2000 | 2000 | 2000 | 2000 |
| Depth (mm) | 600 | 600 | 600 | 600 |
| Model No. | 8606.000 | 8806.000 | 8006.000 | 8206.000 |
| Doors | 1 | 1 | 2 | 2 |
| Weight (kg) | 104.0 | 130.5 | 161.2 | 194.6 |
| Mounting plate (mm) | 499 x 1896 | 699 x 1896 | 899 x 1896 | 1099 x 1896 |

Enclosures TMO



TMO enclosures based on the Baying enclosure system VX25 for technology mounting, as described starting at page 4

Including the following modifications:

Front:

- Door(s) with fitted 8618.330 180° hinges
- Door(s) with fitted 8618.250 comfort handle for semi-cylinder, incl. fitted 7993.200 adapter kit for double-bit lock insert

Base/plinth:

- Base/plinth height: 200 mm, consisting of corner pieces and 8660.02X base/plinth trims front and rear (front base/plinth trims 2 x 100 mm high, rear base/plinth trim 1 x 200 mm high) and 8660.043 base/plinth trims at the sides

Interior installation:

- With zinc-plated mounting plate, fitted at the rearmost position in the last pattern hole
- Top front with 2500.220 LED system light, 24 V, with 2500.410 power supply and fitted 2500.460 door position switch

| | | | |
|----------------------------|------------------------|------------------------|------------------------|
| Width (mm) | 600 | 800 | 1200 |
| Height (mm) | 2000 + 200 | 2000 + 200 | 2000 + 200 |
| Depth (mm) | 600 | 600 | 600 |
| Basic | 8606.000 | 8806.000 | 8206.000 |
| Order designation | VX 8606 BMW / KA-01 | VX 8806 BMW / KA-01 | VX 8206 BMW / KA-01 |
| Model No. | 7993.126 | 7993.128 | 7993.122 |
| Mounting plate width (mm) | 499 | 699 | 1099 |
| Mounting plate height (mm) | 1896 | 1896 | 1896 |
| Weight (kg) | 109.0 | 136.3 | 202.2 |
| Door(s) | 1 | 1 | 2 |

Integrated parts:

| Fitted on/in the enclosure | 7993.126 | 7993.128 | 7993.120 | 7993.122 |
|----------------------------------|-----------------|-----------------|-----------------|-----------------|
| 180° hinges | 8618.330 | 8618.330 | 8618.330 | 8618.330 |
| Comfort handle | 8618.250 | 8618.250 | 8618.250 | 8618.250 |
| Double-bit adapter kit | 7993.200 | 7993.200 | 7993.200 | 7993.200 |
| Base/plinth corner piece / trims | 8660.022 | 8660.023 | 8660.024 | 8660.025 |
| Base/plinth trims sides | 8660.043 | 8660.043 | 8660.043 | 8660.043 |
| LED system light | 2500.220 | 2500.220 | 2500.220 | 2500.220 |
| Power supply | 2500.410 | 2500.410 | 2500.410 | 2500.410 |
| Door-operated switch | 2500.460 | 2500.460 | 2500.460 | 2500.460 |

CE power supply enclosures TKB



CE power supply enclosures based on the Baying enclosure system VX25
for technology mounting, as described starting at page 4

Including the following modifications:

Front:

- Double doors with mounted 180° hinges
- Right door with fitted comfort handle and adapter kit with double-bit insert
- In the right door with a fitted wiring plan pocket and with two (for 800 mm-wide enclosure with one) wiring plan lecterns, distance from lower edge of the door to upper edge of wiring plan pocket 437 mm and distance from lower edge of the door to upper edge of wiring plan lecterns 955 mm

Sides:

- Side panels mounted right and left

Base:

- the base frame is open, without gland plates

Base/plinth:

- Base/plinth height: 200 mm, consisting of 8660.02X corner pieces and two base/plinth trims 100 mm high in front and three base/plinth trims 200 mm high on the right, left and rear, base/plinth spray-finished RAL 9005
- with a cable clamp rail 8619.410 fitted on the left side of the base, fastening points: the 1st and 3rd frame hole from the left

Interior installation:

- Without mounting plate
- Top front with 2500.220 LED system light, 24 V, with 2500.410 power supply and fitted 2500.460 door-operated switch

Earthing:

- The doors are connected to the frame at the top with 2412.316 earthing straps

CE power supply enclosures TKB

| | | |
|--------------------------|-----------------------|-----------------------|
| Width (mm) | 800 | 1200 |
| Height (mm) | 2000 + 200 | 2000 + 200 |
| Depth (mm) | 600 | 600 |
| Basic | 8806.000 | 8206.000 |
| Order designation | VX 8806 BMW-CE / 7035 | VX 8206 BMW-CE / 7035 |
| Model No. | 7993.164 | 7993.165 |

Integrated parts:

| | | |
|----------------------------|-----------------|-----------------|
| Fitted on/in the enclosure | 7993.164 | 7993.165 |
| 180° hinges | 8618.330 | 8618.330 |
| Comfort handle | 8618.250 | 8618.250 |
| Double-bit adapter kit | 7993.200 | 7993.200 |
| Wiring plan pocket | 4114.000 | 4116.000 |
| Wiring plan lectern | 4120.000 | 4120.000 |
| Side panels | 8106.245 | 8106.245 |
| Base/plinth corner piece | 8660.023 | 8660.025 |
| Side base/plinth trims | 8660.043 | 8660.043 |
| Installation bracket | 8660.400 | 8660.400 |
| Cable clamp rail | 8619.410 | 8619.410 |
| LED system light | 2500.220 | 2500.220 |
| Power supply | 2500.410 | 2500.410 |
| Door-operated switch | 2500.460 | 2500.460 |
| Earthing straps | 2412.316 | 2412.316 |

Compact enclosures AX



Housing:

- Sturdy 1.25 or 1.5 mm sheet steel construction, folded from a single piece and welded, with seamless protection channel at the door opening
- Rear panel with recessed holes for wall-mounting bracket
- Housing floor with sheet steel gland plates

Doors:

- 1.5 mm or 2 mm sheet steel, supported, with foamed-in seal, vertical perforated mounting strip on both sides, screw-fastened hinges
- Changing between right and left hinges possible for single-door housings
- Cam locks with double-bit insert in accordance with DIN 43668

Mounting plate:

- 2.0 mm or 2.5 mm sheet steel with system punchings with depth-adjustable studs

Material:

- Housing: Sheet steel
- Door: Sheet steel, seamless
Foamed-in PU seal
- Mounting plate: Zinc-plated

Surface finish:

- Housing and door: Dipcoat-primed,
exterior powder-coated,
textured paint

Colour:

- RAL 7035 light grey

| | | | | | | |
|---|-----------------|-----------------|-----------------|-----------------|-----------------|-----------------|
| Width (mm) | 300 | 380 | 380 | 380 | 400 | 500 |
| Height (mm) | 300 | 300 | 380 | 600 | 500 | 500 |
| Depth (mm) | 210 | 210 | 210 | 210 | 210 | 210 |
| Model No. | 1033.000 | 1031.000 | 1380.000 | 1038.000 | 1045.000 | 1050.000 |
| Mounting plate width (mm) | 250 | 330 | 330 | 330 | 350 | 450 |
| Mounting plate height (mm) | 275 | 275 | 355 | 575 | 475 | 475 |
| Number of locks | 1 | 1 | 1 | 2 | 2 | 2 |
| Protection category in accordance with IEC 60 529 | IP66 | IP66 | IP66 | IP66 | IP66 | IP66 |
| Weight (kg) | 7.0 | 7.5 | 9.8 | 15.6 | 13.0 | 16.8 |

Compact enclosures AX

| | | | | | | |
|---|-----------------|-----------------|-----------------|-----------------|-----------------|-----------------|
| Width (mm) | 500 | 600 | 600 | 600 | 600 | 600 |
| Height (mm) | 700 | 380 | 600 | 600 | 600 | 760 |
| Depth (mm) | 250 | 210 | 210 | 250 | 350 | 210 |
| Model No. | 1057.000 | 1039.000 | 1060.000 | 1054.000 | 1360.000 | 1076.000 |
| Mounting plate width (mm) | 450 | 550 | 550 | 550 | 550 | 550 |
| Mounting plate height (mm) | 675 | 355 | 575 | 575 | 575 | 735 |
| Number of locks | 2 | 1 | 2 | 2 | 2 | 2 |
| Protection category in accordance with IEC 60 529 | IP66 | IP66 | IP66 | IP66 | IP66 | IP66 |
| Weight (kg) | 31.2 | 15.4 | 22.8 | 24.8 | 28.4 | 32.1 |

| | | | | | | |
|---|-----------------|-----------------|-----------------|-----------------|-----------------|-----------------|
| Width (mm) | 600 | 600 | 760 | 760 | 800 | 800 |
| Height (mm) | 760 | 800 | 760 | 760 | 1000 | 1200 |
| Depth (mm) | 350 | 250 | 210 | 300 | 300 | 300 |
| Model No. | 1376.000 | 1058.000 | 1077.000 | 1073.000 | 1180.000 | 1280.000 |
| Mounting plate width (mm) | 550 | 545 | 705 | 705 | 745 | 745 |
| Mounting plate height (mm) | 735 | 775 | 735 | 735 | 975 | 1175 |
| Number of locks | 2 | 2 | 2 | 2 | 2 | 1* |
| Protection category in accordance with IEC 60 529 | IP66 | IP66 | IP66 | IP66 | IP66 | IP66 |
| Weight (kg) | 36.0 | 33.6 | 40.0 | 44.5 | 57.0 | 70.0 |

| | | | |
|---|-----------------|-----------------|-----------------|
| Width (mm) | 1000 | 600 | 800 |
| Height (mm) | 1000 | 800 | 1200 |
| Depth (mm) | 300 | 400 | 400 |
| Model No. | 1110.000 | 1059.000 | 1281.000 |
| Mounting plate width (mm) | 945 | 545 | 745 |
| Mounting plate height (mm) | 975 | 775 | 1175 |
| Number of locks | 2 | 2 | 1* |
| Protection category in accordance with IEC 60 529 | IP55 | IP66 | IP66 |
| Weight (kg) | 71.0 | 39.0 | 71.0 |

* = 3-point locking system

Bus enclosures KX



Housing:

- Sturdy 1.25 sheet steel construction, folded from a single piece and welded, with seamless protection channel at the door opening
- Rear panel with recessed holes for wall-mounting bracket

Cover:

- 1.25 mm sheet steel, supported, with foamed-in seal and screw-fastened hinges, 180° opening angle
- Cut-out with polycarbonate viewing panel glued-on at the rear, 4 mm thick

Material:

- Housing: Sheet steel
- Cover: Sheet steel, seamless foamed-in PU seal

Surface finish:

- Housing and cover: Dipcoat-primed, exterior powder-coated, textured paint

Colour:

- RAL 7035 light grey

Protection category in accordance with IEC 60 529:

- IP 65

Including the following modifications:

Cover:

- Cut-out with viewing panel glued-on at the rear is offset by 10.0 mm off-center towards the hinge side
- Closed by cam locks no. 371380 with integrated double-bit lock inserts 2466.000

| | | | |
|-------------------------------|-----------------|-----------------|-----------------|
| Width (mm) | 400 | 600 | 800 |
| Height (mm) | 300 | 300 | 300 |
| Depth (mm) | 155 | 155 | 155 |
| Model No. | 1611.100 | 1612.100 | 1613.100 |
| Number of cam locks | 1 | 2 | 2 |
| Viewing panel dimensions (mm) | 287.5 x 190.5 | 487.5 x 190.5 | 687.5 x 190.5 |
| Weight (kg) | 7.0 | 9.5 | 13.1 |

E-Boxes KX



Housing:

- Sturdy 1.25 or 1.38 mm sheet steel construction, folded from a single piece and welded, with seamless protection channel at the door opening
- Rear panel with recessed holes for wall-mounting bracket

Door:

- 1.25 mm sheet steel, supported, with foamed-in seal and screw-fastened hinges, 180° opening angle, cam lock with double-bit insert in accordance with DIN 43668

Mounting plate:

- 2 or 2.5 mm sheet steel, zinc-plated

Material:

- Housing: Sheet steel
- Door: Sheet steel, seamless
Foamed-in PU seal
- Mounting plate: Zinc-plated

Surface finish:

- Housing and door: Dipcoat primed
exterior powder-coated,
textured paint

Colour:

- RAL 7035 light grey

Protection category in accordance with IEC 60 529:

- IP 66

| | | | | | | |
|----------------------------|-----------------|-----------------|-----------------|-----------------|-----------------|-----------------|
| Width (mm) | 150 | 200 | 200 | 300 | 200 | 380 |
| Height (mm) | 150 | 200 | 300 | 800 | 300 | 300 |
| Depth (mm) | 120 | 120 | 120 | 155 | 155 | 155 |
| Model No. | 1553.000 | 1549.000 | 1554.000 | 1579.000 | 1574.000 | 1576.000 |
| Mounting plate width (mm) | 125 | 175 | 175 | 275 | 175 | 365 |
| Mounting plate height (mm) | 135 | 185 | 285 | 785 | 285 | 275 |
| Number of locks | 1 | 1 | 1 | 2 | 1 | 1 |
| Weight (kg) | 2.0 | 2.8 | 3.6 | 13.2 | 4.5 | 7.5 |

CA / CE Floor unit TKB



T CA / CE Floor unit as 24V or 400V distributor housing for motor vehicle body construction technology,
basic AX, as described starting at page 11.

Including the following modifications:

Door:

- door with a fitted 2435.100 comfort handle inclusive a 2466.000 double-bit insert

Roof:

- at the rear with four mounting holes for a support arm system, covered with sealing plugs
- inside with reinforcement plate and four M6 rivet nuts under the hole pattern of the roof plate

Base:

- base with cut-out for cable entry, covered with a divided gland plate with brush strips

Base/plinth:

- Base/plinth height: 200 mm, consisting of corner pieces and 2820.082 base/plinth trims front and rear, front base/plinth trims 2 x 100 mm high, rear base/plinth trim 1 x 200 mm high and two 2820.420 base/plinth trims 200 mm high on the right and left, base/plinth spray-finished RAL 9005

Interior installation:

- CE floor unit with zinc-plated mounting plate
- CA floor unit without mounting plate

Earthing:

- the door is connected to the lower earthing point of the enclosure by a 2412.316 earthing strip
- the reinforcement plate of the roof is connected to the upper earthing point of the enclosure by a 2412.316 earthing strip
- in the CE floor unit another 2412.316 earthing strip is attached from the earthing point of the reinforcement plate to the mounting plate
- in the CA floor unit also a 2412.316 earthing strip is attached to the earthing point of the reinforcement plate for mounting on the Lütze frame by the customer

CA / CE Floor unit TKB

Supplied loose:

- the following items are loosely supplied with the CA floor unit:
 - 1 pc(s) 2500.220 LED system light
 - 1 pc(s) 2500.410 Connection cable (power supply for LED system light)
 - 1 pc(s) 2500.460 Door position switch
 - 1 pc(s) 4597.000 Mounting bracket (for the attachment of the door position switch)
- There are no loose items enclosed with the CE floor unit:

| Version: | CA floor unit | CE floor unit |
|-----------------------|-----------------------|------------------|
| Use | 24V distributor | 400V distributor |
| Dimensions (wxhxd) mm | 800 x 900 + 200 x 400 | |
| Mounting plate | - | ■ |
| LED System light | ■ | - |
| Colour | RAL 7035 | |
| Model No. | 7993.175 | 7993.176 |

| | | |
|------------------------------|----------|----------|
| Fitted on/in the enclosure | 7993.175 | 7993.176 |
| Comfort handle | 2435.100 | 2435.100 |
| Double-bit insert | 2466.000 | 2466.000 |
| Base/plinth corner piece | 2820.082 | 2820.082 |
| Side base/plinth trims | 2820.420 | 2820.420 |
| Earthing strip | 2412.316 | 2412.316 |
| LED system light (loose) | 2500.220 | - |
| Supply (loose) | 2500.410 | - |
| Door position switch (loose) | 2500.460 | - |
| Mounting bracket (loose) | 4597.000 | |

Accessories

Accessories for the VX25 enclosure system



Side panels, screw-fastened

- Time-saving installation with clip-in side-panel holder
- Automatic potential equalisation and increased EMC protection provided by panel holder with inside contact elements
- Straightforward height and depth positioning thanks to location aid
- One-person installation
- Earthing bolts with large, paint-free contact surface for optimum contact

Surface finish:

- Dipcoat primed, exterior powder-coated

Colour:

- RAL 7035

Protection category in accordance with IEC 60 529:

- IP 55

Packs of:

- 2 pc(s)

Material:

- Sheet steel, 1.5 mm

Supply includes:

- Assembly parts

| For enclosure height (mm): | For enclosure depth (mm): | Model No.: |
|----------------------------|---------------------------|-----------------|
| 1800 | 500 | 8185.245 |
| 1800 | 600 | 8186.245 |
| 2000 | 500 | 8105.245 |
| 2000 | 600 | 8106.245 |



Base/plinth corner pieces with trims

Front/rear

Heavy-duty base/plinth corner pieces with formed self-positioning to the enclosure, deployable with or without base/plinth trims depending on the application.

Note:

200 mm high base/plinth corner pieces are provided with one 200 mm base/plinth trim and two 100 mm base/plinth trims.

Material:

- Sheet steel

Surface finish:

- Spray-finished

Colour:

- RAL 9005

Packs of:

- 1 set

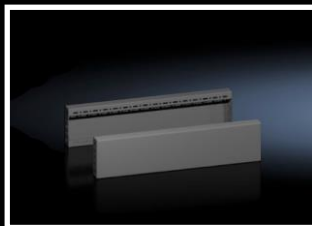
Supply includes:

- Assembly parts

| For enclosure width (mm): | Height (mm): | Model No.: |
|---------------------------|--------------|-----------------|
| 600 | 100 | 8660.002 |
| 800 | 100 | 8660.003 |
| 1000 | 100 | 8660.004 |
| 1200 | 100 | 8660.005 |
| 600 | 200 | 8660.022 |
| 800 | 200 | 8660.023 |
| 1000 | 200 | 8660.024 |
| 1200 | 200 | 8660.025 |

Accessories

Accessories for the VX25 enclosure system



Side base/plinth trims

For lateral closure of a base/plinth unit and for additional stability, or for the interior installation of bayed base/plinths. Either one 200 mm high or two 100 mm high trims can be fitted on 200 mm high bases/plinths.

Material:

- Sheet steel

Surface finish:

- Spray-finished

Colour:

- RAL 9005

Packs of:

- 2 pc(s)

Supply includes:

- Assembly parts

| For enclosure depth (mm): | Height (mm): | Model No.: |
|---------------------------|--------------|-----------------|
| 500 | 100 | 8660.032 |
| 600 | 100 | 8660.033 |
| 500 | 200 | 8660.042 |
| 600 | 200 | 8660.043 |



VX comfort handle

As the handle does not take up any swing space, due to its folding technique, the door surface area can be optimally used for installed components. Simple installation, thanks to the snap-mounted handle system.

Material:

- Die-cast zinc

Colour:

- RAL 7035

| Design: | Model No.: |
|-------------------|-----------------|
| For lock inserts | 8618.200 |
| For semi-cylinder | 8618.250 |

Packs of:

- 1 pc(s)

Supply includes:

- Assembly parts



180° hinges

To extend the door opening angle to 180°. Can be installed without making any mechanical changes to the door. Suitable for door installations up to 900 N.

Material:

- Steel precision-casting

Surface finish:

- Spray-finished

| Packs of: | Model No.: |
|-----------|-----------------|
| 4 pc(s) | 8618.330 |

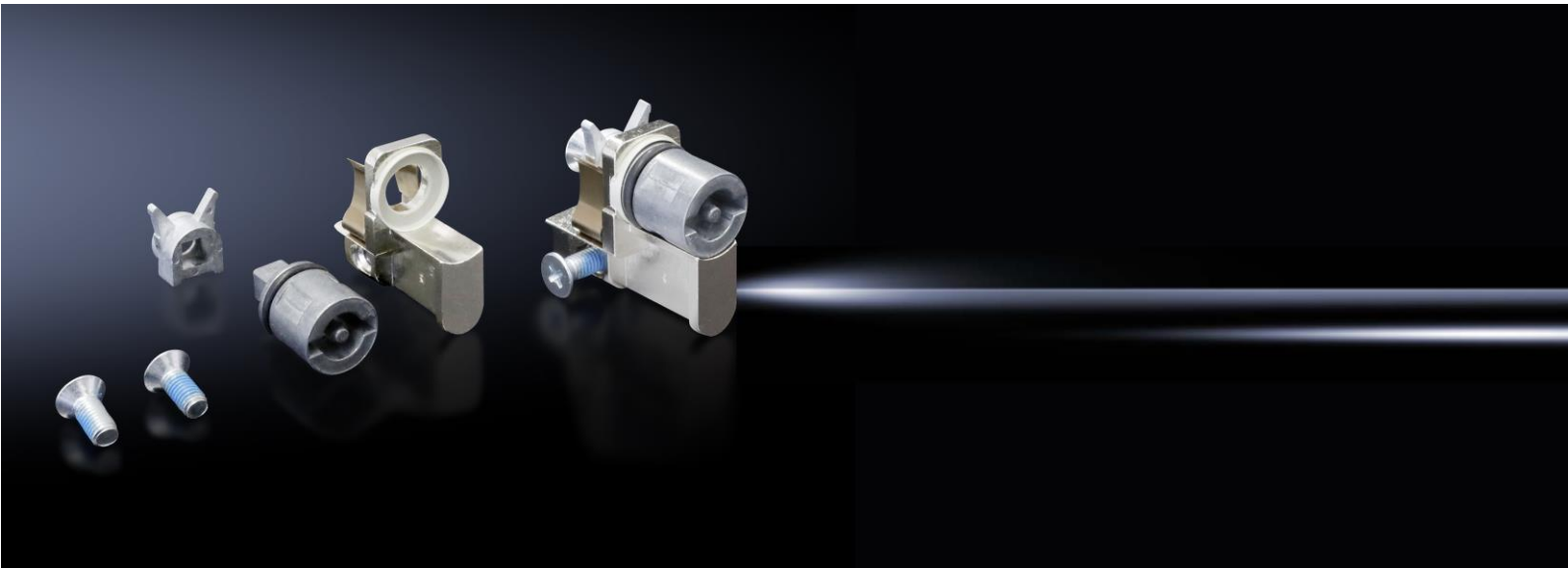
Colour:

- RAL 7035

Supply includes:

- Assembly parts

Double-bit adapter kit 7993.200



For mounting an enclosure lock with double-bit according to DIN 43668 in a Rittal locking system with preparation for semi-cylinder.

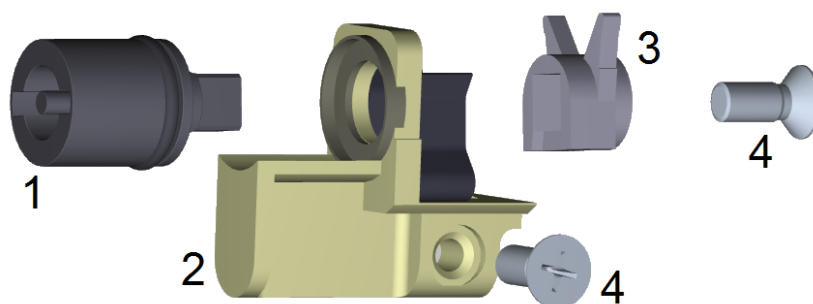
Suitable for 8618.250 VX comfort handle, 8611.070 VX SE comfort handle, 2435.100 AX comfort handle and 2537.100 AX mini comfort handle.

Material:

- Die-cast zinc
- Steel

Supply includes:

| Nr. | Article | Model No. / Ident-No. | Quantity |
|-----|-----------------------------|-----------------------|----------|
| 1 | Lock insert double-bit 3 mm | 2466.000 | 1 |
| 2 | Lock insert holder | 265 540 | 1 |
| 3 | Operating lever | 214 362 | 1 |
| 4 | Fastening screw | 221 491 | 2 |



Accessories

Accessories for the VX25 enclosure system



Wiring plan pocket

For fastening to the tubular door frame at any height.
Clearance depth 90 mm.

Material:

- Sheet steel, spray-finished

Colour:

- RAL 7035

Supply includes:

- Assembly parts

| For door width (mm): | Model No.: |
|----------------------|------------|
| 400 | 4114.000 |
| 500 | 4115.000 |
| 600 | 4116.000 |
| 800 | 4118.000 |

Packs of:

- 1 pc(s)



Utility lectern

Prepared for installation on the perforated door strip or on sufficiently large surfaces. Can be folded out quickly for servicing, with a large surface area, can be recessed to save space after use, surface area 413 / 613 x 400 mm.

Material:

- Sheet steel, spray-finished

Colour:

- RAL 7035

| For door width (mm): | Model No.: |
|----------------------|------------|
| 600 | 4638.600 |
| 800 | 4638.800 |

Packs of:

- 1 pc(s)

Supply includes:

- Assembly parts



Wiring plan lectern

For storage of wiring plans during trouble-shooting and maintenance work. The wiring plan lecterns can be bayed in accordance with the door width.

Installed on the tubular door frame.

Colour: Similar to RAL 7035. Packs of 1

Required/possible number of wiring plan lecterns:

- For door width 500 mm: Min. 1, max. 1.
- For door width 600 mm: Min. 2, max. 2.
- For door width 800 mm: Min. 2, max. 3.

| Packs of: | Model No.: |
|-----------|------------|
| 1 pc(s) | 4120.000 |

Material:

- Polypropylene

Colour:

- Similar to RAL 7035

Supply includes:

- Assembly parts



Accessories

Accessories for the VX25 enclosure system



Keyboard drawer

For keyboards up to 430 mm wide and 250 mm deep with the front panel folded over.

Material:

- Housing: Sheet steel, spray-finished
- Front panel: Aluminium, natural anodised.

| Packs of: | Model No.: |
|-----------|-----------------|
| 1 pc(s) | 7281.035 |

Colour:

- RAL 7035

Supply includes:

- Assembly parts



M6 captive nuts

For fastening rack-mounted electronic equipment, 19" installed components and blanking plates to the mounting angles. For deployment with section sheet thicknesses from 0.8 – 2.0 mm.

Without contact of the installed components with the 19" section.

| Packs of: | Model No.: |
|-----------|-----------------|
| 50 pc(s) | 2092.200 |



Mounting plate infill

For the continuous mounting surface area in bayed combinations for the preferred position of the mounting plate.

Material:

- Sheet steel, zinc-plated

Surface finish:

- Zinc-plated

| For enclosure height (mm): | Model No.: |
|----------------------------|-----------------|
| 1800 | 4590.700 |
| 2000 | 4591.700 |

Packs of:

- 1 pc(s)

Supply includes:

- Assembly parts



Divider panel for module plates

With cut-outs for installing module plates for plug connectors or for cable bushing.

Number of cut-outs: 10

Material:

- Sheet steel, 2.0 mm

Surface finish:

- Zinc-plated

Packs of:

- 1 pc(s)

Supply includes:

- Assembly parts

| For enclosure height (mm): | For enclosure depth (mm): | Model No.: |
|----------------------------|---------------------------|-----------------|
| 1800 | 500 | 8609.210 |
| 1800 | 600 | 8609.211 |
| 2000 | 500 | 8609.212 |
| 2000 | 600 | 8609.213 |

Accessories

Accessories for the VX25 enclosure system

Module plates for divider panel

Material:

- Sheet steel

Surface finish:

- Zinc-plated

Packs of:

1 pc(s)

Supply includes:

- Assembly parts

Solid

For sealing unused cut-outs. Easily machined for individual cut-outs.

For plug connectors

With 4 cut-outs to accommodate plug connectors.

With cable bushing

For the entry of pre-assembled cables. Sealed, routing is achieved via adjustable angle brackets with inserted foam cable clamp strip.

Fixed bracket, perforated, for cable clamping.

With cable grommet

For cables with diameter 10 to 65 mm. The flexible grommet adapts itself to the cable bending radius.

| | |
|---------|-------------------|
| Design: | Model No.: |
| Solid: | 8609.160 |

| | |
|---------|-------------------|
| Design: | Model No.: |
| 16-pole | 8609.150 |
| 24-pole | 8609.140 |

| | |
|---------|-------------------|
| Design: | Model No.: |
| Bushing | 8609.170 |

| | |
|---------------|-------------------|
| Design: | Model No.: |
| Cable grommet | 8609.390 |

Cover plates

For plug connector cut-outs

For unused cut-outs.

Material:

- Sheet steel

Surface finish:

- Zinc-plated

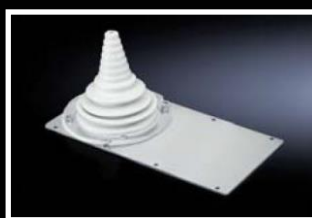
| | |
|---------|-------------------|
| Design: | Model No.: |
| 16-pole | 2478.000 |
| 24-pole | 2477.000 |

Packs of:

- 20 pc(s)

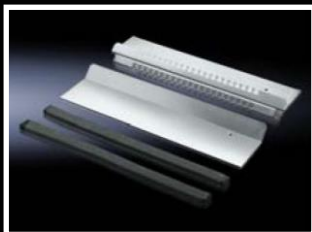
Supply includes:

- Assembly parts



Accessories

Accessories for the VX25 enclosure system



EMC gland plates

For shielded cables with max. \varnothing 20 mm. Combined EMC/IP seal provides low-resistance contact between cable shield and gland plate.

Material:

- Sheet steel

Surface finish:

- Zinc-plated

| For enclosure width (mm): | Model No.: |
|---------------------------|-----------------|
| 600 | 8618.820 |
| 800 | 8618.821 |
| 1000 | 8618.822 |
| 1200 | 8618.823 |

Packs of:

- 1 set

Supply includes:

- Assembly parts



Cable entry plates

Instead of segments of the standard divided gland plates.

Protection category in accordance with IEC 60 529:

- IP 55 when correctly installed

Material:

- Sheet steel

Surface finish:

- Zinc-plated

Supply includes:

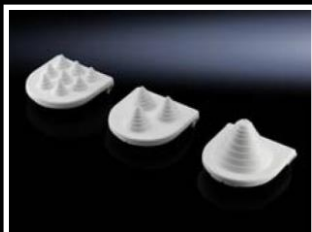
- Assembly parts



| For enclosure width (mm): | Packs of: | Model No.: |
|---------------------------|-----------|-----------------|
| 600 | 2 pc(s) | 8619.800 |
| 800 | 2 pc(s) | 8619.801 |
| 1000 | 4 pc(s) | 8619.802 |
| 1200 | 4 pc(s) | 8619.803 |

Accessories

Accessories for the VX25 enclosure system



Cable entry grommets

In combination with the cable entry plate, a simple and fast sealing for cables introduced in the base area of the enclosures.

Protection category in accordance with IEC 60 529:

- IP 55 when correctly installed

Material:

- Main body: Polypropylene
- Grommet: Elastomer

Colour:

- Similar to RAL 7035

| Max. number of cables: | Max. cable Ø (mm): | Packs of: | Model No.: |
|------------------------|--------------------|-----------|-----------------|
| 8 | 13 | 25 pc(s) | 4316.000 |
| 3 | 21 | 25 pc(s) | 4317.000 |
| 1 | 47 | 25 pc(s) | 4318.000 |



Connector grommet

Suitable for cable diameters from 8 to 36 mm.

Protection category in accordance with IEC 60 529:

- IP 55 when correctly installed

Packs of:

10 pc(s)

Model No.:

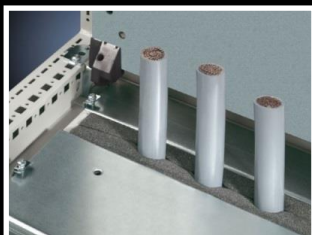
4311.000

Material:

- Outer cover: Polypropylene with thermoplastic elastomer sheathing
- Seal: Cellular rubber

Colour:

- Similar to RAL 7035



Foam rubber cable clamp strip

For sealing the cable entry between the gland plates. Particularly suitable for identical cable cross-sections.

Protection category in accordance with IEC 60 529:

- IP 55 when correctly installed

Packs of:

3 m

Model No.:

2573.000

Cross-section:

- 30 x 30 mm

Material:

- PU foam



Brush strip

For the customised installation of panels. For metal thickness: 0.6 – 1.5 mm. Snap-on surface: 10 mm. Bristle length: 30 mm, plastic sheathing: 18 mm. Maximum cut-out height: 38 mm.

Packs of:

2 m

Model No.:

7072.200

Accessories

Accessories for the VX25 enclosure system



C rails 30/15

In accordance with EN 60 715.

Material:

- Sheet steel

Surface finish:

- Zinc-plated

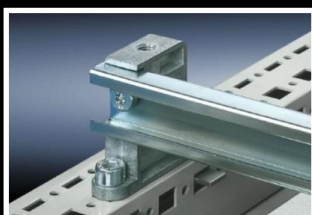
Packs of:

- 6 pc(s)

| For enclosure width (mm): | Model No.: |
|---------------------------|-----------------|
| 600 | 4944.000 |
| 800 | 4945.000 |
| 1000 | 4946.000 |
| 1200 | 4947.000 |

Supply includes:

- Assembly parts



Bracket

for C rails.

For fastening cable clamp rails to the horizontal enclosure section.

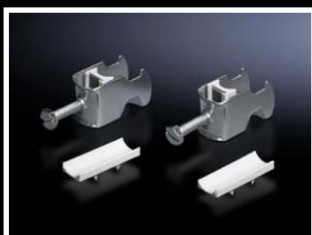
Material:

- Die-cast zinc

| Packs of: | Model No.: |
|-----------|-----------------|
| 6 pc(s) | 4199.000 |

Supply includes:

- Assembly parts



Cable clamps

for C rails.

For fastening the cables to the cable clamp rails.

Material:

- Sheet steel

Surface finish:

- Zinc-plated

Packs of:

- 25 pc(s)

Supply includes:

- Plastic washers

| For cable Ø (mm) | Model No.: |
|------------------|-----------------|
| 6 – 14 | 7077.000 |
| 12 – 18 | 7078.000 |
| 18 – 22 | 7097.000 |
| 22 – 26 | 7097.220 |
| 26 – 30 | 7097.260 |
| 30 – 34 | 7097.300 |
| 34 – 38 | 7097.340 |
| 38 – 42 | 7098.000 |
| 42 – 56 | 7097.100 |
| 56 – 64 | 7099.000 |



LED light

LED light and accessories



LED light

Optimum illumination in the complete enclosure. The installation is performed directly in the system punchings, tool-free via a retaining hook system.

Straightforward and easy connection thanks to rotatable plug connectors.

Material:

- Plastic
- Aluminium

Colour:

Housing: RAL 7016

Light colour:

- 4000 K (neutral white)

Packs of:

1 pc(s)

Model No.:

2500.220

Power:

- 900 lumens

Length:

- 437 mm

Rated operating voltage:

- 24 V DC

Supply includes:

- Assembly bolts



Connection power

for LED system light, 2-pole.

For time-saving and straightforward connection of the lights.

Cable colour:

- Black

Packs of:

5 pc(s)

Model No.:

2500.410

Cable length:

- 3000 mm



Door-operated switch

for LED system light.

For time-saving and straightforward connection of the lights.

Cable colour:

- Black

Cable length:

- 800 mm

Packs of

1 pc(s)

Model No.:

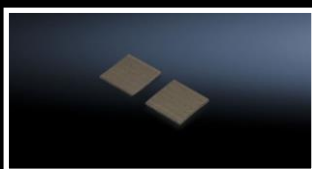
2500.460

Rated operating voltage:

- 230 V AC / 24 V DC, 1 A

Supply includes:

- Assembly parts



Mounting kit magnet

For sticking onto the rear of s LED system light.

Packs of:

2 pc(s)

Model No.:

2400.490



Door-operated switch

For switching lights or climate-control components. Without connection cable.

Rated operating voltage:

- 240 V, 125 V, 24 V, 24 V (DC)

Packs of:

1 pc(s)

Model No.:

4127.010

Supply includes:

- Assembly parts

Climate control accessories

Accessories



Thermostat

Enclosure internal thermostat.

For controlling filter fans, roof fans, heaters and heat exchangers; but also as a signal encoder for monitoring the enclosure internal temperature.

Flexible installation on vertical or horizontal 35 mm support rail in accordance with EN 50 022 as well as snap fastening in the enclosure section or on the mounting plate.

Dimensions (WxHxD):

- 71 x 71 x 33.5 mm

| Packs of: | Model No.: |
|-----------|-----------------|
| 1 pc(s) | 3110.000 |

Colour:

RAL 7035

Setting range:

- +5 °C ... +60 °C

Switching difference:

- Approx. 1 K, ± 0.8 K

Rated operating voltage:

- 24 V – 230 V, 1 ~,
24 V – 60 V DC



Digital temperature display and thermostat

For installation in the enclosure door or panel. Three-digit, 7-segment display.

Can be switched between °C/°F.

Includes 1,800 mm long NTC sensor. Two relay outputs as change-over contact and normally open contact (maximum contact load 230 V, 6 A).

Freely selectable switching difference.

Installation depth:

- 100 mm

Protection category in accordance with IEC 60 529:

- IP 54

| Packs of: | Model No.: |
|-----------|-----------------|
| 1 pc(s) | 3114.200 |

Colour:

RAL 7035

Setting range:

- +5 °C ... +55 °C

Rated operating voltage:

- 100 V – 230 V, 50/60 Hz,
24 V – 60 V DC



Enclosure internal fan

To prevent hot-spots and to support the air routing of active enclosure climate-control components. Adjustable in two axes. Fastened to the VX25 frame section. Cascading Several fans possible using the quick-release clamping strip. Fully wired unit ready for connection with radial fan and lockable swivel device.

Air throughput (unimpeded air flow):

- 160 m³/h

| Packs of | Model No.: |
|----------|-----------------|
| 1 pc(s) | 3108.024 |

Rated operating voltage:

- 24 V DC, 1 A

Supply includes:

- Assembly parts

Accessories for compact enclosures

Locks



Plastic handle

For TKB TK technology case.
Without security cylinder insert,
including assembly parts and seal.

| Packs of: | Model No.: |
|-----------|-----------------|
| 1 pc(s) | 2533.100 |

Colour:

- Black



E1 plastic handle

For TKB TK technology case.
With integrated E1 lock,
including assembly parts and seal.

| Packs of: | Model No.: |
|-----------|-----------------|
| 1 pc(s) | 2577.010 |

Colour:

- Black



Security key

For 2577.010 plastic handle.
E1 lock.

| Packs of | Model No.: |
|----------|-----------------|
| 1 pc(s) | 2532.002 |



Earthing strap

With press-fitted contact rings.
Earthing straps counteract the skin effect at
high frequencies, whilst at the same time of-
fer highly flexible connection capabilities.

Material:

- Copper, tin-plated

| Cross-section (mm²): | Length (mm): | Packs of: | Model No.: |
|----------------------|--------------|-----------|-----------------|
| 16 | 200 | 10 pc(s) | 2412.216 |
| 25 | 200 | 10 pc(s) | 2412.225 |
| 16 | 300 | 10 pc(s) | 2412.316 |
| 25 | 300 | 10 pc(s) | 2412.325 |

Change journal

Changes

| Version | Change | Date |
|---------|--|------------|
| 1.0 | New handbook created. | 08/11/2019 |
| 1.1 | AE, KL and BG housings replaced with AX and KX housings. | 11/03/2020 |
| 1.2 | CA / CE Floor units and distributor enclosure 7993.264 added | 01/12/2020 |
| 1.2 | Cable entry of the CE distributor enclosures revised | 01/12/2020 |
| 1.3 | Bus enclosures with double-bit cam locks | 25/01/2021 |
| 1.4 | Mounting bracket and earthing strips in CA and CE Floor units added | 24/02/2021 |
| 1.5 | Corrected position of wiring plan lecterns in CE power supply enclosures | 01/04/2021 |
| 1.6 | Order numbers for bus enclosures updated | 04/10/2021 |
| 1.6 | Mounting kit magnet for LED system light removed in CA floor unit | 04/10/2021 |
| 1.7 | TK technology case TKB removed | 16/02/2022 |
| 1.8 | Base/plinth trims at the sides of TMO enclosures added | 13/05/2022 |
| 1.9 | VX base/plinth system | 13/12/2023 |
| 1.9 | 1000 mm wide TMO enclosure 7993.120 removed | 13/12/2023 |
| 1.10 | CE power supply enclosures 7993.264 and 7993.265 removed | 02/05/2024 |

Contacts

| | |
|------------------------------|-----------------------------------|
| Key Account Manager: | Back Office: |
| Michael Scholl | Markus Schäfer |
| Phone: +49 (0) 2772 570 900 | Telefon: +49 (0) 2772 505 2035 |
| Mobile: +49 (0) 175 7257 431 | @-mail: schaefer.markus@rittal.de |
| E-mail: scholl.m@rittal.de | |

We reserve the right to further developments and technical modifications of our products. Such modifications, along with errors and printing errata, shall not constitute grounds for compensation. We refer customers to our Terms of Sale and Delivery.

Rittal – The System.

Faster – better – everywhere.

- Enclosures
- Power Distribution
- Climate Control
- IT Infrastructure
- Software & Services

You can find the contact details of all
Rittal companies throughout the world here.



www.rittal.com/contact

ENCLOSURES

POWER DISTRIBUTION

CLIMATE CONTROL

IT INFRASTRUCTURE

SOFTWARE & SERVICES

FRIEDHELM LOH GROUP

