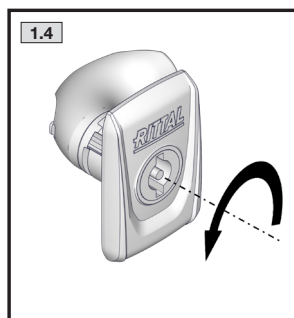
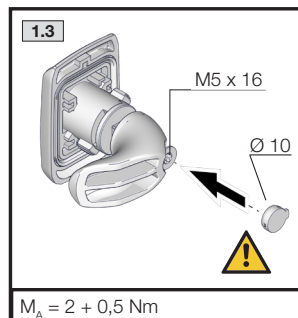
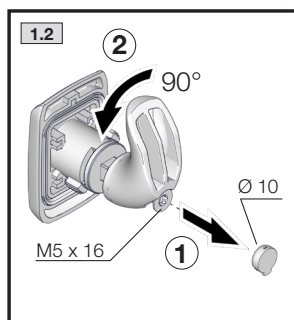
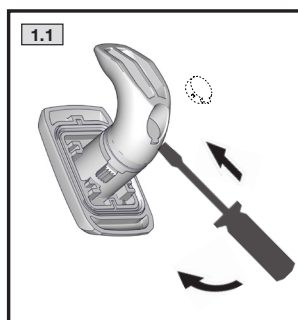
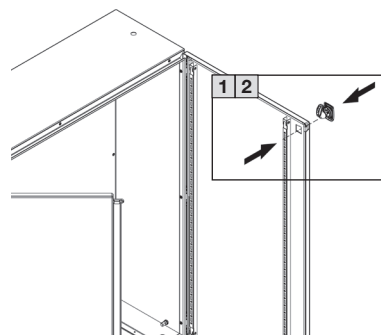
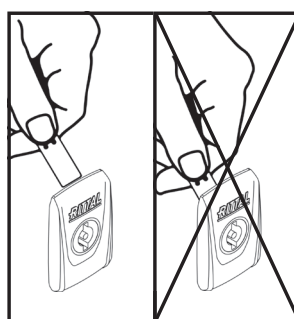
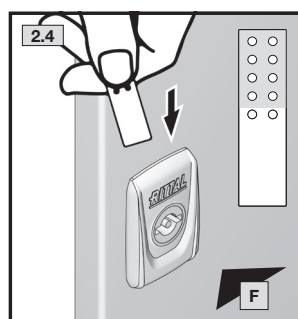
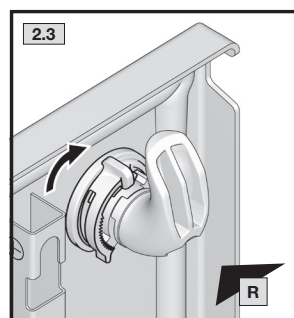
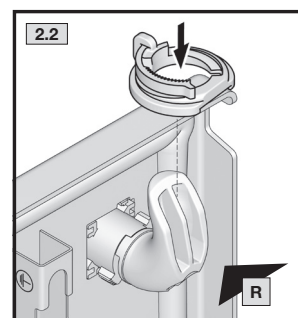


- Montage Vorreiberverschluss, 2-türig, Türanschlag rechts oben.
- Mounting the cam lock – 2-door enclosures, door hinged on right top.
- Montage de la serrure à came – coffrets à 2 portes avec charnières à droite en haut.

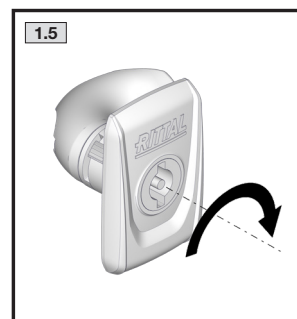
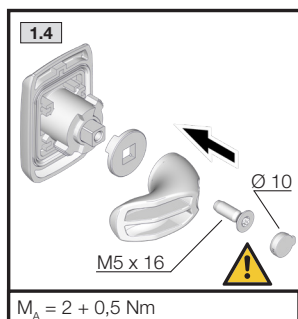
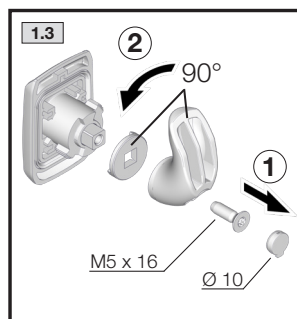
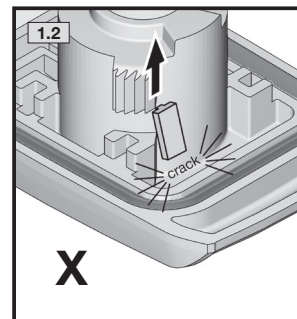
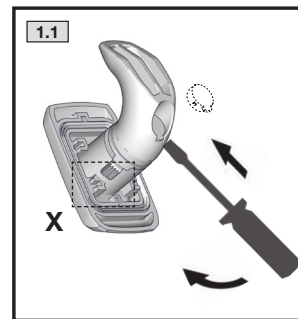
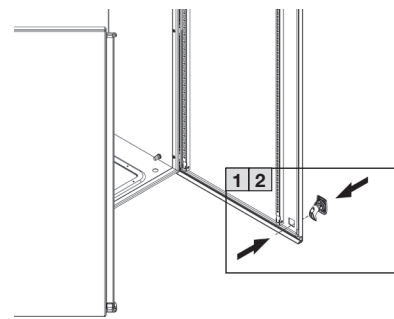


$M_A = 2 + 0,5 \text{ Nm}$

-Risiko der Potenzialverschleppung im Fehlerfall  
-Risk of potential transfer in the event of a fault  
-Risque de propagation du potentiel en cas de défaut

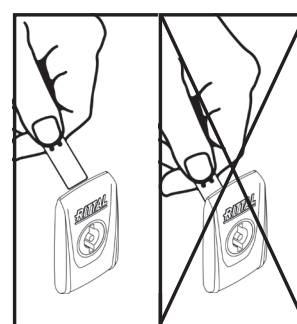
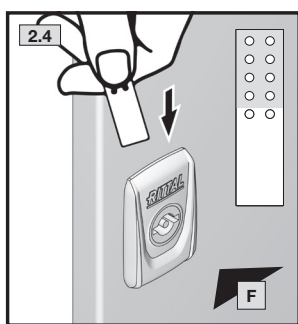
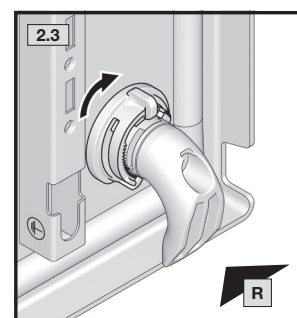
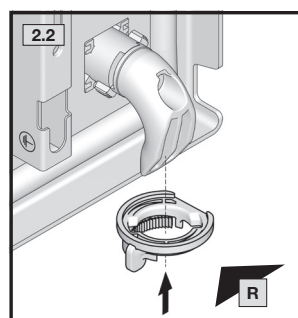
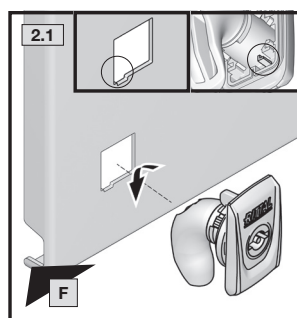


- Montage Vorreiberverschluss, 2-türig, Türanschlag rechts unten.
- Mounting the cam lock – 2-door enclosures, door hinged on right bottom.
- Montage de la serrure à came – coffrets à 2 portes avec charnières à droite en bas.



$M_A = 2 + 0,5 \text{ Nm}$

-Risiko der Potenzialverschleppung im Fehlerfall  
-Risk of potential transfer in the event of a fault  
-Risque de propagation du potentiel en cas de défaut





www.rittal.com



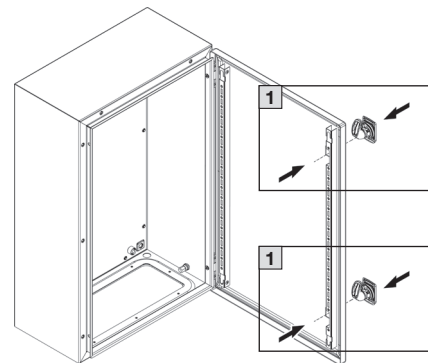
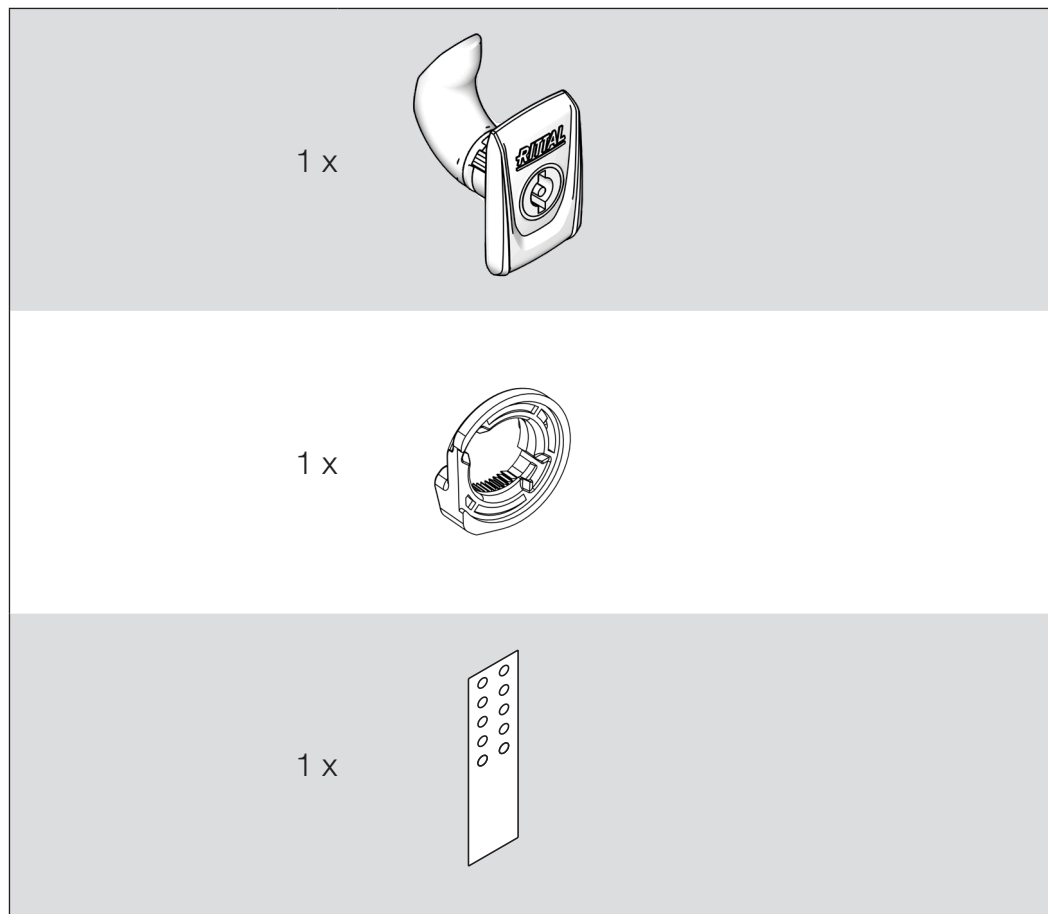
4028177966178

SZ

2420.010

- Montage Vorreiberverschluss, 1-türig, Türanschlag rechts
- Mounting the cam lock – 1-door enclosures, door hinged on right
- Montage de la serrure à came – coffrets à 1 porte avec charnières à droite

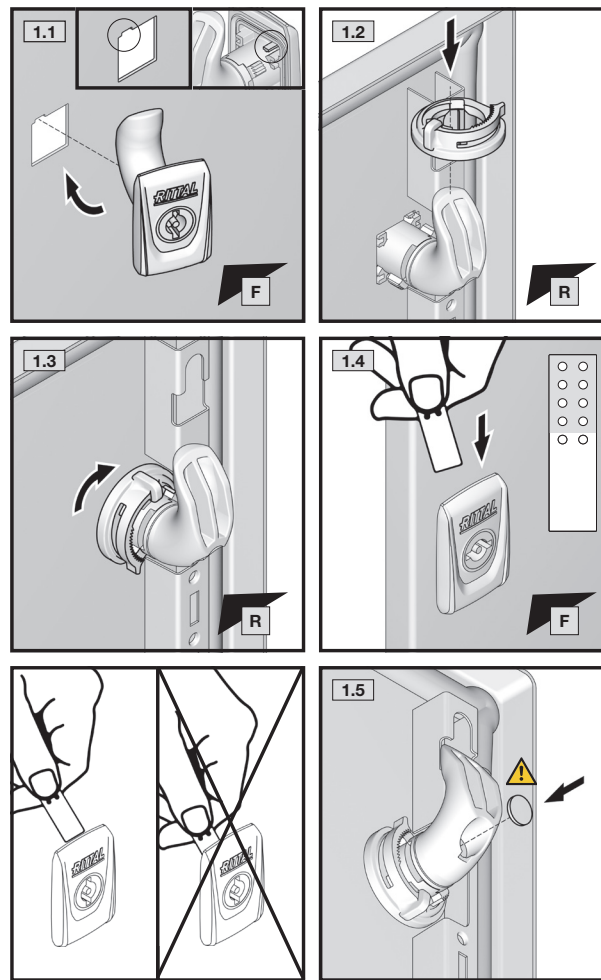
- Montage Vorreiberverschluss, 1-türig, Türanschlag links
- Mounting the cam lock – 1-door enclosures, door hinged on left
- Montage de la serrure à came – coffrets à 1 porte avec charnières à gauche



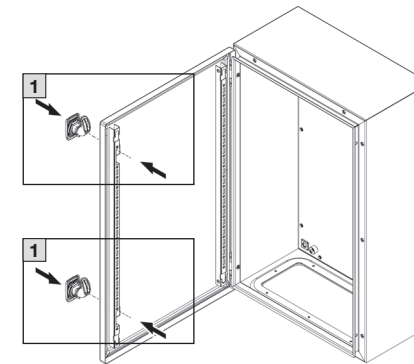
Hinweis:  
Front-/Rückansicht.

Note:  
Front/rear view.

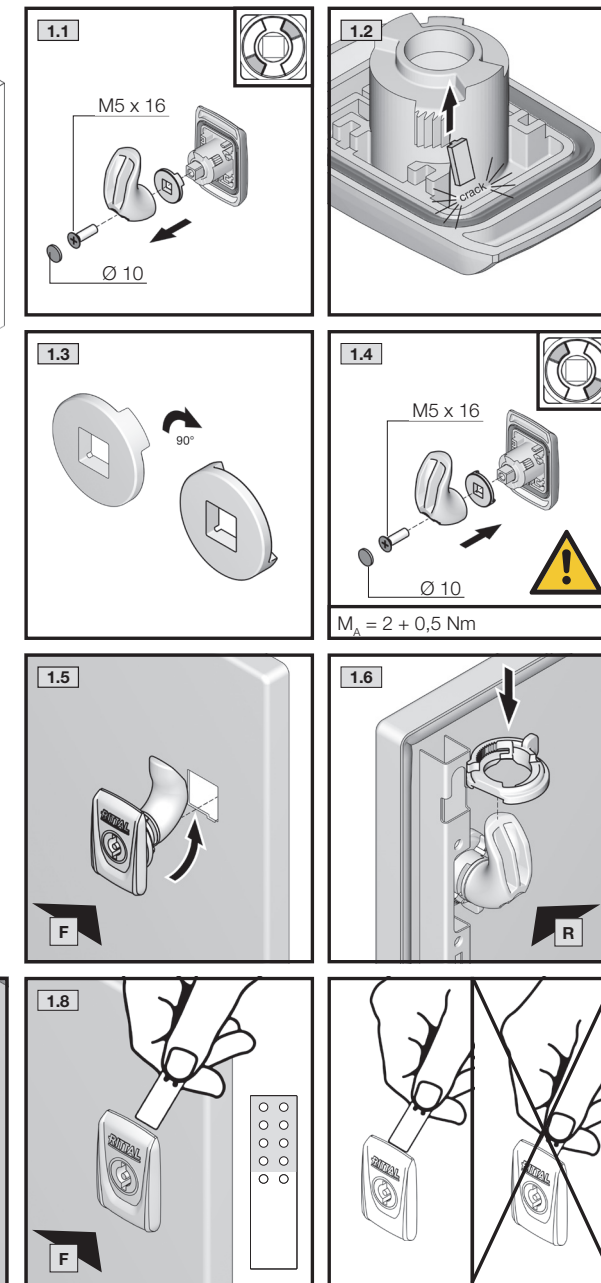
Remarque :  
F = vue frontale  
R = vue arrière



**Risiko der Potenzialverschleppung im Fehlerfall**  
**Risk of potential transfer in the event of a fault**  
**Risque de propagation du potentiel en cas de défaut**



**-Risiko der Potenzialverschleppung im Fehlerfall**  
**-Risk of potential transfer in the event of a fault**  
**-Risque de propagation du potentiel en cas de défaut**



Dok.-Nr. / No. of doc.: D-0000-00002817-01  
Versandbeutel-Nr. / No. of accessory bag: -

Made in  
Lieferanten-Nr. / No. of supplier:

RITTAL GmbH & Co. KG, Auf dem Stuetzelberg, 35745 Herborn  
RITTAL Limited, Braithwell Way, Hellaby, Rotherham, S66 8QY, UK