



ENCLOSURES

POWER DISTRIBUTION

CLIMATE CONTROL

IT INFRASTRUCTURE

SOFTWARE & SERVICES

MODEL : SK3336.400  
KRAE0081TT00V000EG

DRAWING NUMBER : EP25013 -

POWER SUPPLY : 400V 3 50Hz - 460V 3 60Hz

AUXILIARY SUPPLY : 24VAC

CUSTOMER :

REFERENCE :

CONTROL PANEL PART NR : 928930

CREATED THE : 07/02/2025 BY AL1

CHANGED ON THE : BY NUMBER OF PAGES 24



CHANGE TRANSFORMER WIRING ACCORDING POWER SUPPLY VOLTAGE





PAGE OVERVIEW

2LP8\_PAGKEL\_22

DOCUMENT TYPE	FUNCTION DEFINITION	LOCATION DESIGNATION	PAGE	PAGE DESCRIPTION	DATE REVISION	EDITED BY
&EAA			1	COVER	07/02/2025	AL1
&EAB			1	PAGE OVERVIEW	02/12/2025	AL1
&EFS	=PWC	+EC01	1	POWER CIRCUIT	02/12/2025	AL1
&EFS	=PWC	+EC01	2	POWER CIRCUIT	04/06/2025	AL1
&EFS	=AUA	+EC01	1	AUXILIARY WIRING	18/11/2025	AL1
&EFS	=AUA	+EC01	2	AUXILIARY WIRING	27/02/2025	FF2
&EFS	=AUA	+EC01	3	DIGITAL INPUT	05/06/2025	AL1
&EFS	=AIN	+EC01	1	ANALOG INPUT	26/02/2025	AL1
&EFS	=ISN	+EC01	1	IN/OUT SIGNALS	27/02/2025	AL1
&EMZ		+EC01	1	UPC OVERVIEW	07/02/2025	AL1
&EMA			1	TERMINAL STRIP SUMMARY	10/02/2025	AL1
&EMA			2	PLUGS SUMMARY	10/02/2025	AG1
&EMA			3	TERMINAL DIAGRAM +EC01-X2	26/05/2025	AL1
&EMA			4	TERMINAL DIAGRAM +EC01-X2	27/02/2025	AL1
&EMA			5	PLUG DIAGRAM =PWC+ELM-XS1	10/02/2025	AG1
&EMA			6	PLUG DIAGRAM =ISN+ELM-XS2	10/02/2025	AG1
&EMA			7	PLUG DIAGRAM =ISN+ELM-XS2	10/02/2025	AG1
&EMB			1	CABLE OVERVIEW =PWC+EC01-W0-=AUA+EC01-W38	18/11/2025	AL1
&EPC			1	BILL OF PLUGS	10/02/2025	AG1
&EPC			2	BILL OF MATERIAL	04/06/2025	AL1
&EPC			3	BILL OF MATERIAL	26/02/2025	AL1
&EPC			4	BILL OF MATERIAL	18/11/2025	AL1
&EPC			5	BILL OF MATERIAL	26/02/2025	AL1
&EPC			6	BILL OF MATERIAL	26/02/2025	AL1

&EAA/1

&EFS=PWC+EC01/1

CREATED BY	AL1	ON THE	07/02/2025
REVISOR		ON THE	LAST REVISION

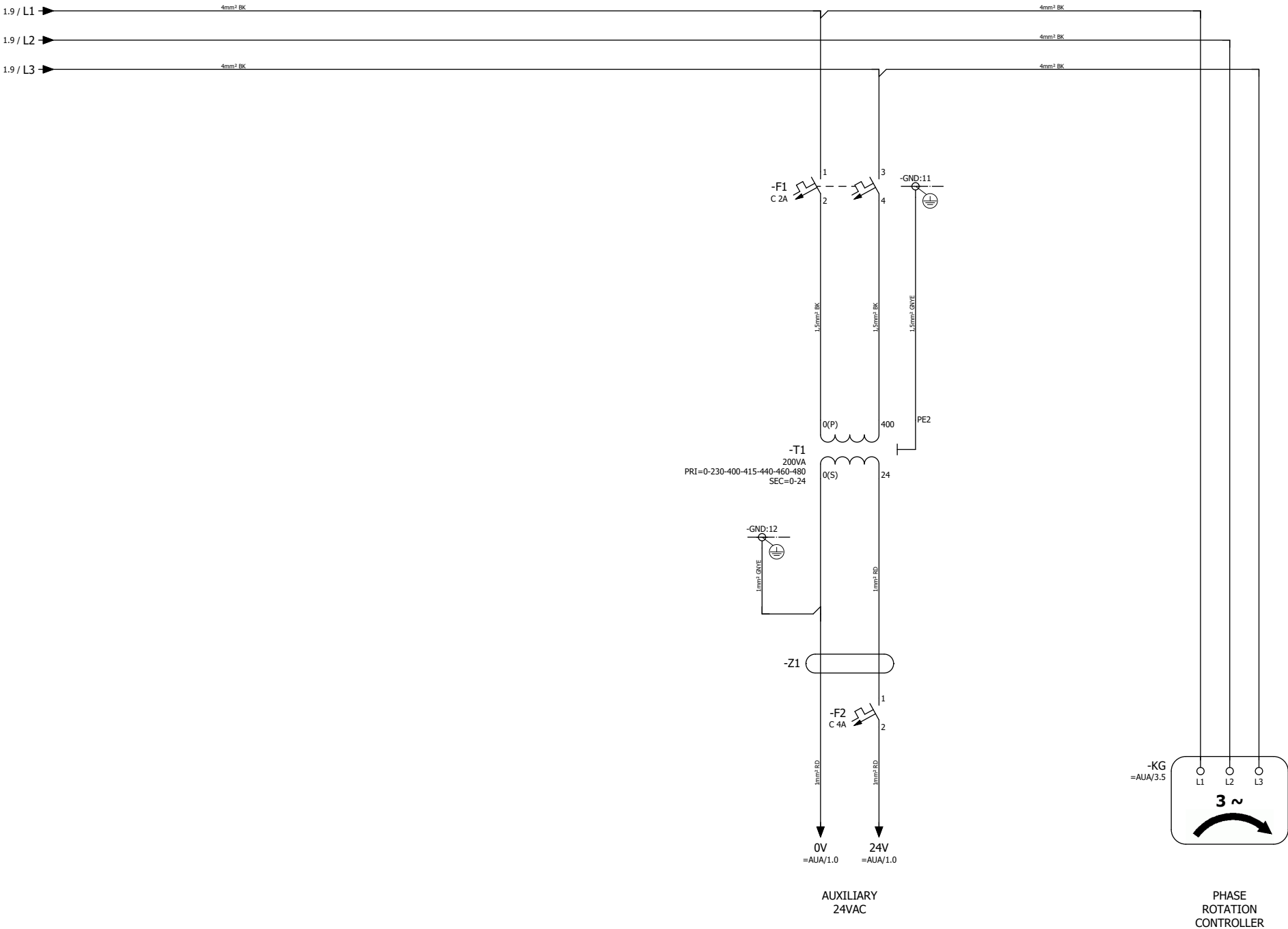


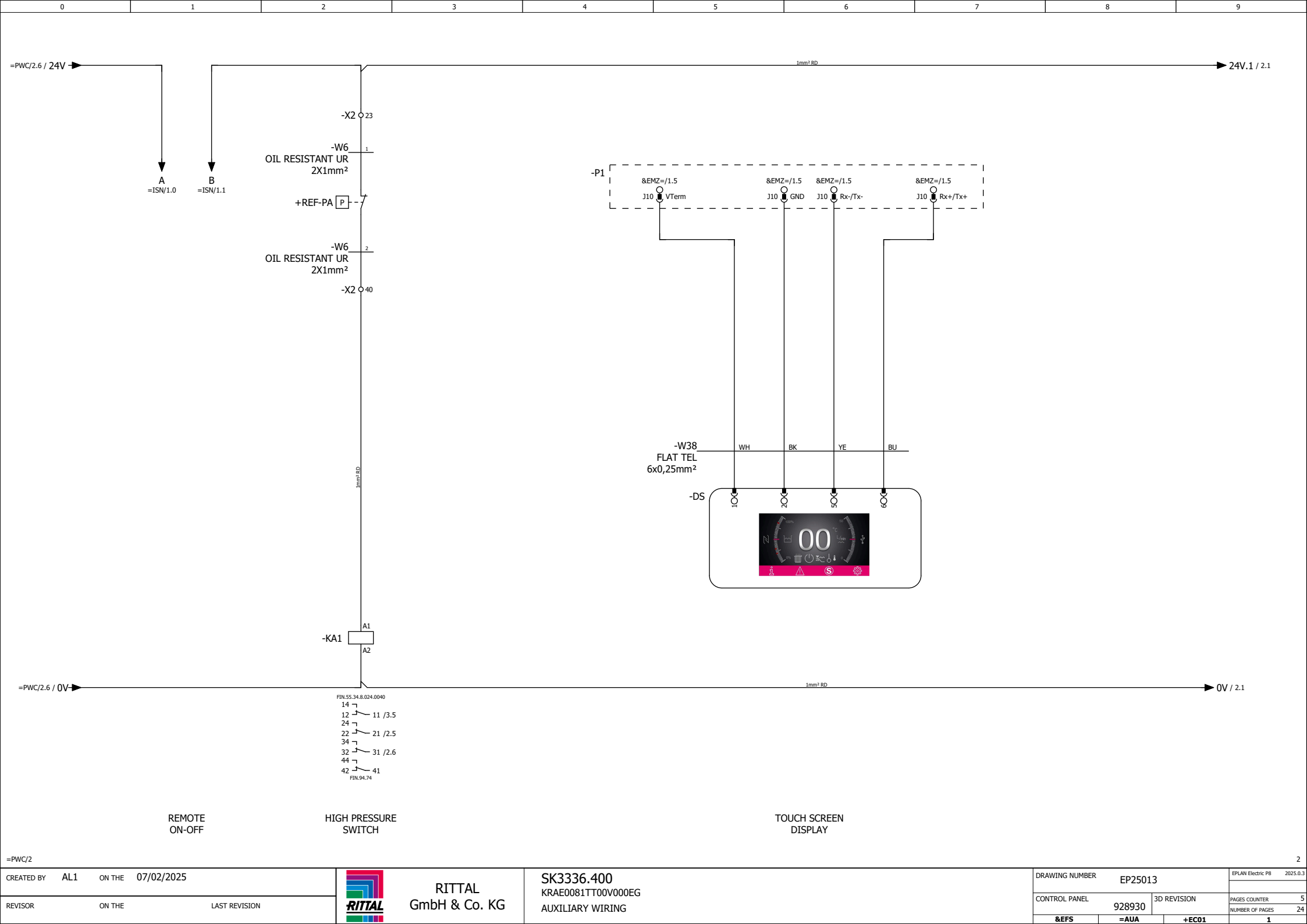
RITTAL  
GmbH & Co. KG

SK3336.400  
KRAE0081TT00V000EG  
PAGE OVERVIEW

DRAWING NUMBER		EP25013		EPLAN Electric P8	2025.0.3
CONTROL PANEL		928930		2LP8_PAGKEL_22	
		3D REVISION		PAGES COUNTER	2
&EAB		=		NUMBER OF PAGES	24
		+			1







=PWC/2

CREATED BY	AL1	ON THE	07/02/2025
REVISOR		ON THE	LAST REVISION



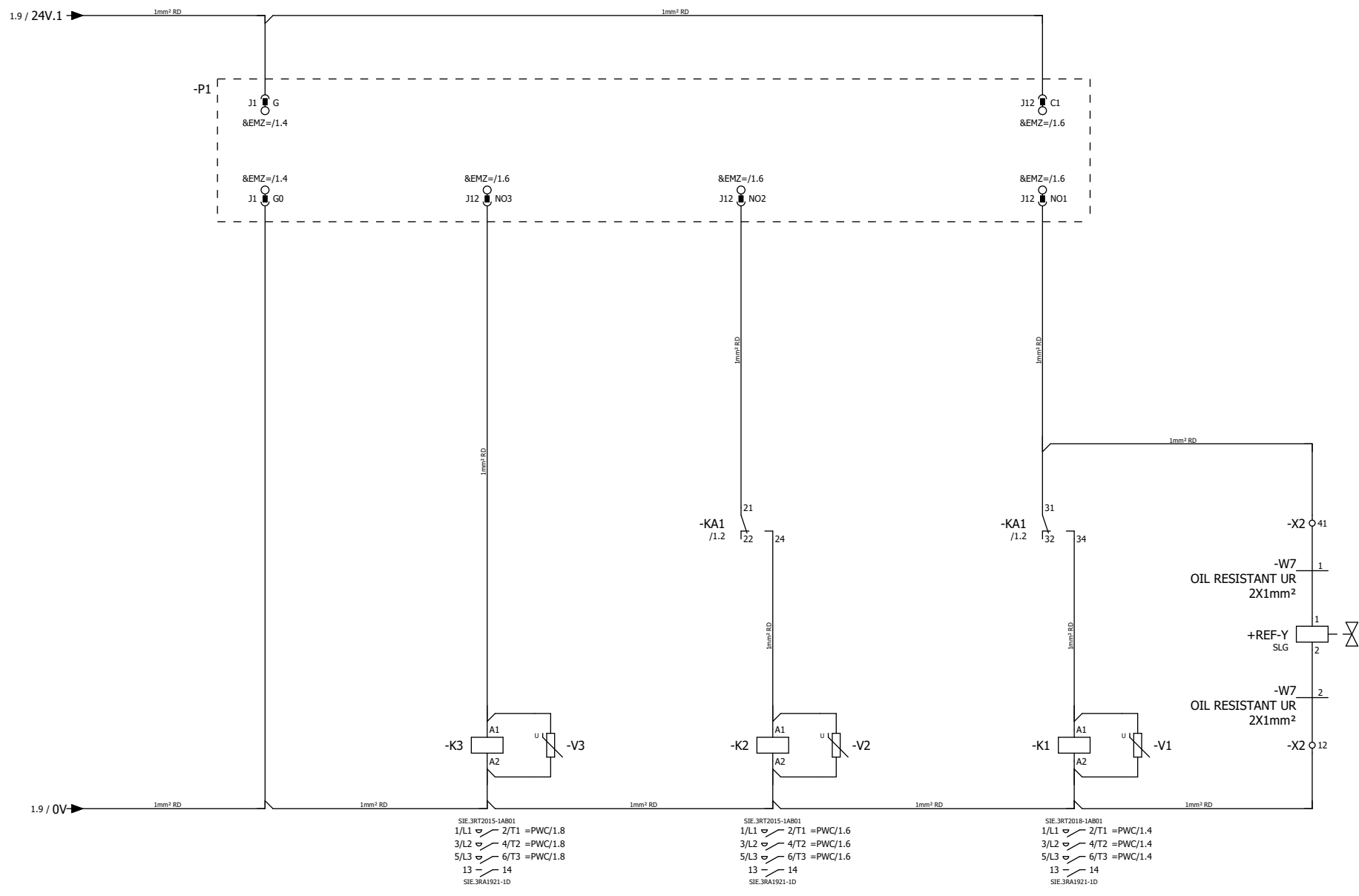
RITTAL  
GmbH & Co. KG

SK3336.400

KRAE0081TT00V000EG

AUXILIARY WIRING

DRAWING NUMBER	EP25013	EPLAN Electric P8	2025.0.3
CONTROL PANEL	928930	3D REVISION	
&EFS	=AUA	+EC01	1
PAGES COUNTER	5	NUMBER OF PAGES	24



UPC  
POWER  
SUPPLY

START  
PUMP

START  
FAN

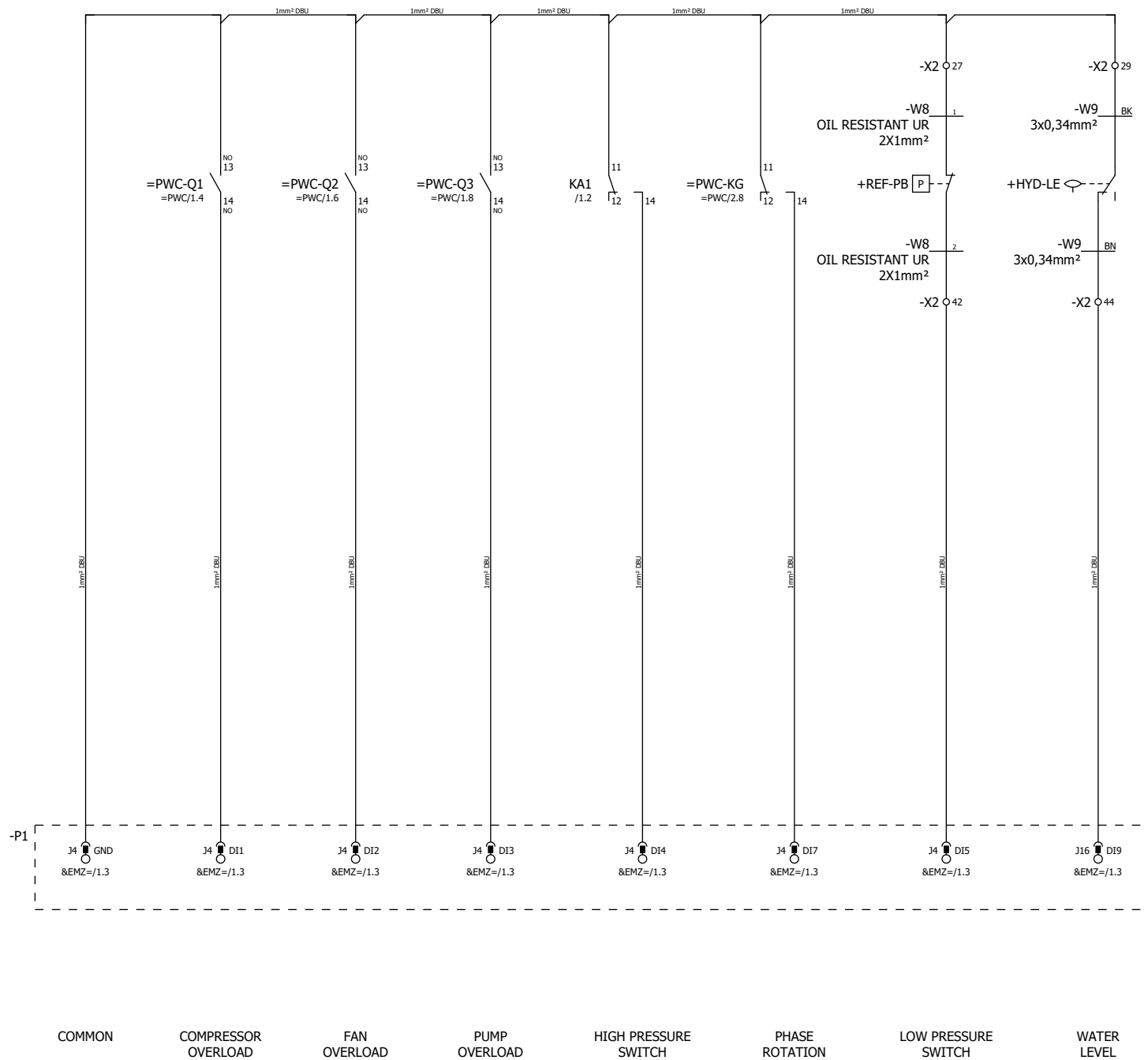
START  
COMPRESSOR

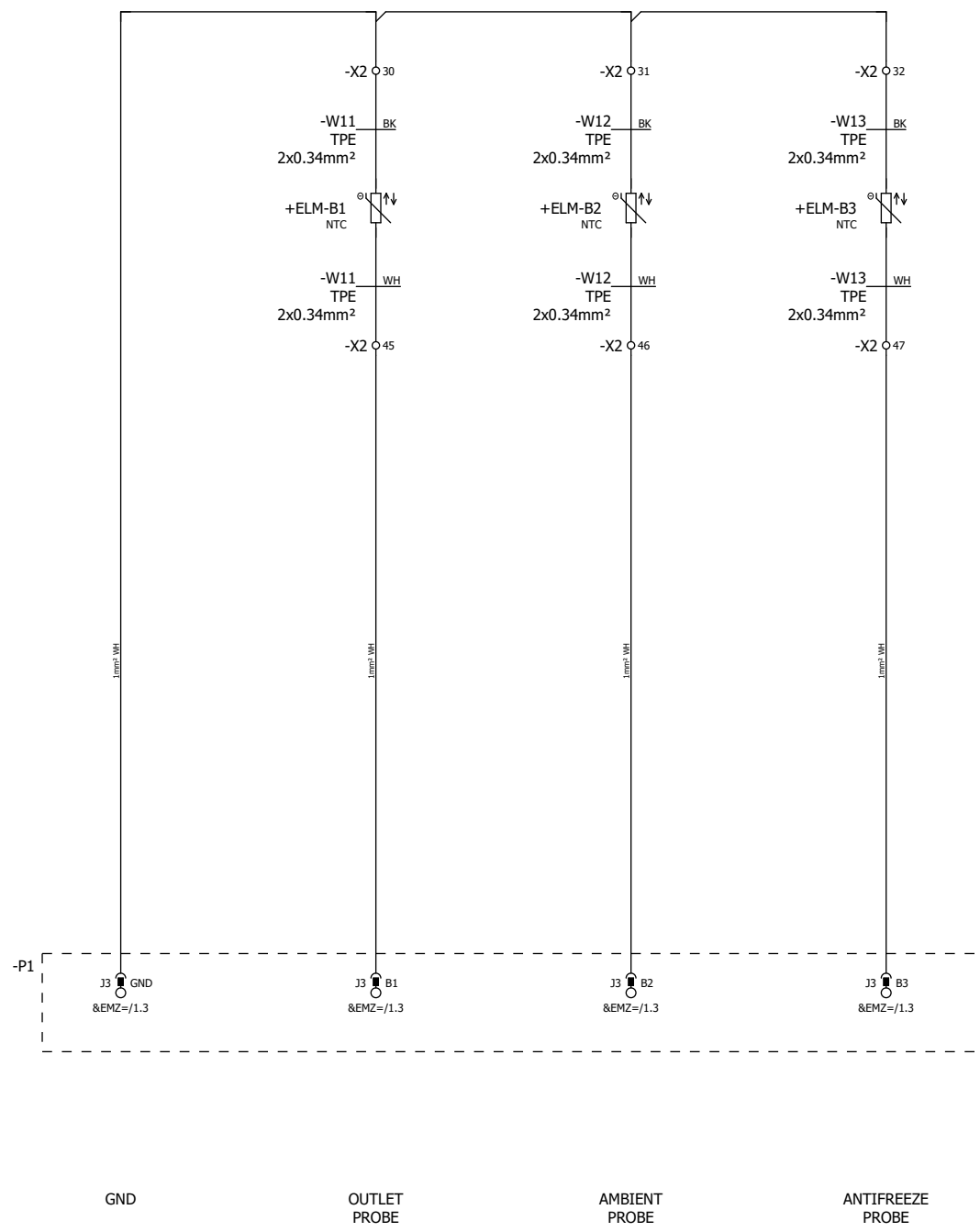
SOLENOID  
VALVE

SIE 3RT2015-1AB01  
1/L1 2/T1 =PWC/1.8  
3/L2 4/T2 =PWC/1.8  
5/L3 6/T3 =PWC/1.8  
13 14  
SIE 3RA1921-1D

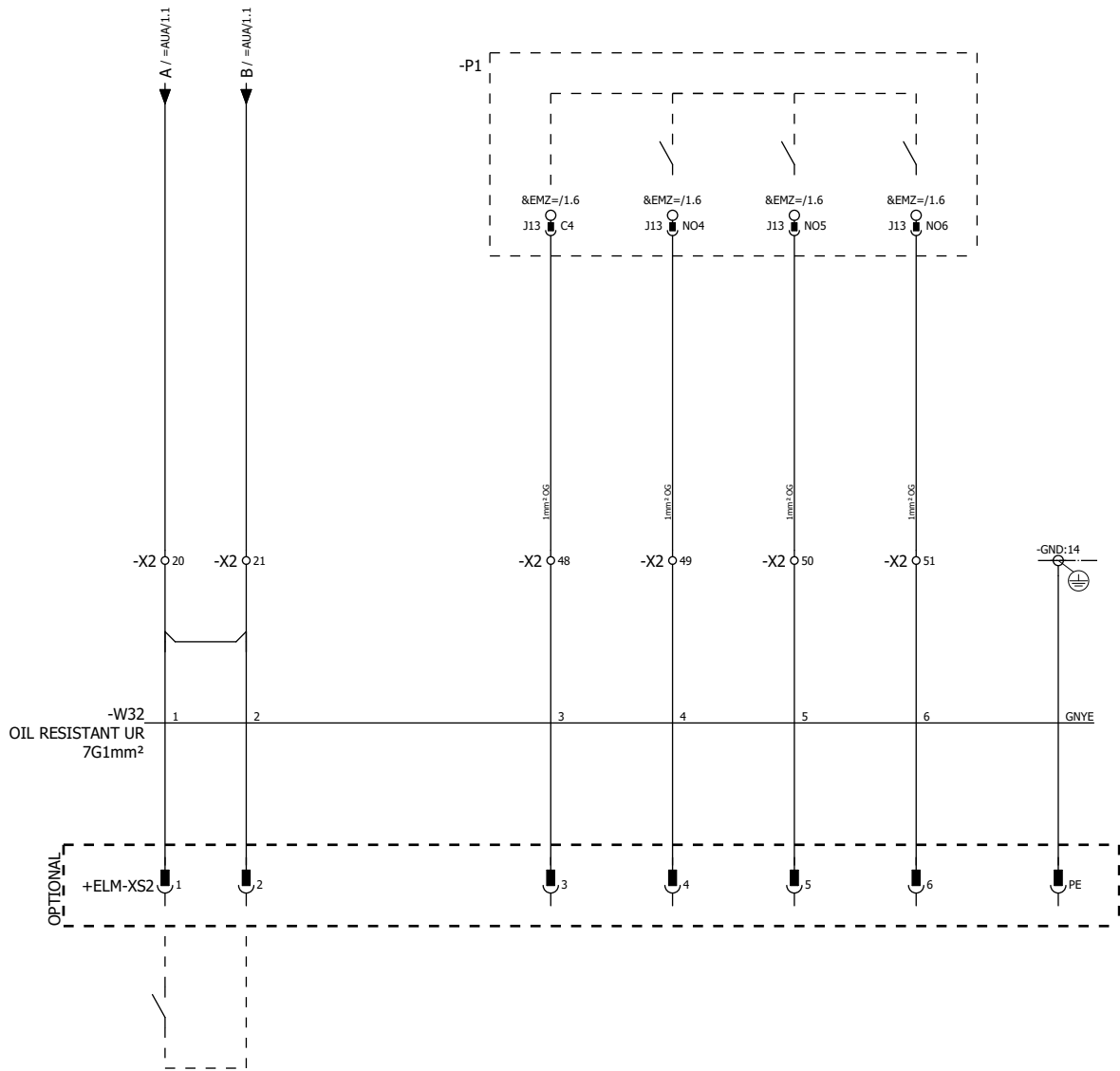
SIE 3RT2015-1AB01  
1/L1 2/T1 =PWC/1.6  
3/L2 4/T2 =PWC/1.6  
5/L3 6/T3 =PWC/1.6  
13 14  
SIE 3RA1921-1D

SIE 3RT2018-1AB01  
1/L1 2/T1 =PWC/1.4  
3/L2 4/T2 =PWC/1.4  
5/L3 6/T3 =PWC/1.4  
13 14  
SIE 3RA1921-1D









REMOTE ON/OFF  
(EXTERNAL FROM CUSTOMER)

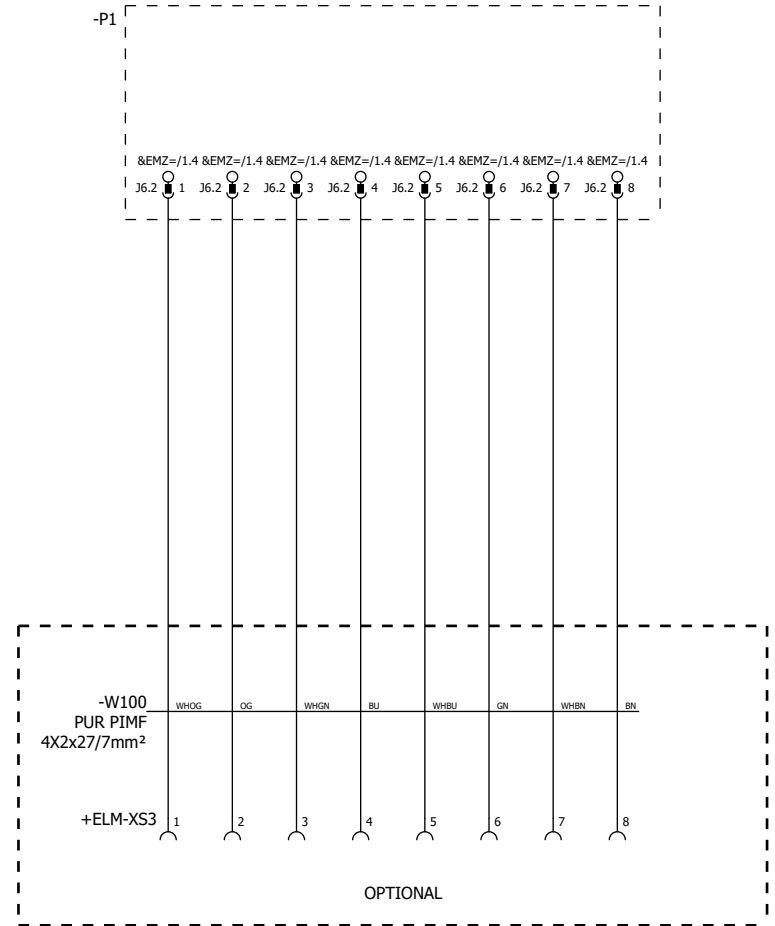
COMMON

WARNING  
SIGNAL

ALARM  
SIGNAL

TEMPERATURE  
ALARM

GND



ETHERNET  
NETWORK

=AIN/1

&EMZ=/1

CREATED BY	AL1	ON THE	07/02/2025
REVISOR		ON THE	LAST REVISION



RITTAL  
GmbH & Co. KG

SK3336.400  
KRAE0081TT00V000EG  
IN/OUT SIGNALS

DRAWING NUMBER		EP25013	EPLAN Electric P8	2025.0.3
CONTROL PANEL		928930	3D REVISION	
&EFS		=ISN	+EC01	

PAGES COUNTER	9
NUMBER OF PAGES	24





# TERMINAL STRIP SUMMARY

2LP8\_INMORKEL\_22

TERMINAL STRIP	FUNCTION TEXT	TERMINALS					TERMINAL BOARD SCHEME PAGE
		FIRST	LAST	SUM OF ALL PE	SUM OF ALL N	TOTAL NUMBER	
+EC01-X2	AUXILIARY SUPPLY TERMINAL BOARD	12	51	0	0	20	&EMA/3



PLUG SUMMARY

2LP8\_INCONKEL\_22

PLUG DESIGNATION	FUNCTION TEXT	TOTAL NUMBER	SUM OF ALL PE	CURRENT [A]	CONNECTION	IMAGE	GRAPHICS PAGE OF THE PLUG
=PWC+ELM-XS1	POWER SUPPLY PLUG	7	1	35	1,5 ... 6 mm²		&EMA/5
=ISN+ELM-XS2	IN/OUT SIGNALS PLUG	11	1				&EMA/6



+EC01-X2  
AUXILIARY SUPPLY TERMINAL BOARD

1	
2	
3	
4	
5	
6	
7	
8	
9	
10	
11	

[illegible]



+EC01-X2  
AUXILIARY SUPPLY TERMINAL BOARD


[illegible]







BASE SIDE



www.HARTING.com

---

FUNCTION TEXT

---

GND

CABLE OVERVIEW

2LP8\_CAVIKEL\_22

CABLE NAME	FROM	TO	CABLE TYPE	CORES	CORES USED	CROSS SECTION	LENGHT(OUT CABINET)	LENGHT(TOTAL)	INTERNAL PART NUMBER	PAGE / PATH
=PWC+EC01-W0	=PWC+ELM-XS1	=PWC+EC01-Q0	OIL RESISTANT UR	4G	4	4mm²		6,4m	926261	&EFS=PWC+EC01/1.1
=PWC+EC01-W1	=PWC+REF-M1	=AUA+EC01-K1	OIL RESISTANT UR	4G	4	2,5mm²		2m	926168	&EFS=PWC+EC01/1.3
		+EC01-GND								
=PWC+EC01-W2	=PWC+REF-M2	=AUA+EC01-K2	OIL RESISTANT UR	4G	4	1,5mm²		3,2m	926163	&EFS=PWC+EC01/1.5
		+EC01-GND								
=PWC+EC01-W3	=PWC+HYD-M3	=AUA+EC01-K3	OIL RESISTANT UR	4G	4	1,5mm²		2m	926163	&EFS=PWC+EC01/1.7
		+EC01-GND								
=AUA+EC01-W6	+EC01-X2	=AUA+REF-PA	OIL RESISTANT UR	2X	2	1mm²		2m	926161	&EFS=AUA+EC01/1.2
=AUA+EC01-W7	+EC01-X2	=AUA+REF-Y	OIL RESISTANT UR	2X	2	1mm²		1,3m	926161	&EFS=AUA+EC01/2.8
=AUA+EC01-W8	+EC01-X2	=AUA+REF-PB	OIL RESISTANT UR	2X	2	1mm²		2m	926161	&EFS=AUA+EC01/3.6
=AUA+EC01-W9	+EC01-X2	=AUA+HYD-LE		3	2	0,34mm²				&EFS=AUA+EC01/3.7
=AIN+EC01-W11	+EC01-X2	=AIN+ELM-B1	TPE	2	2	0.34mm²				&EFS=AIN+EC01/1.4
=AIN+EC01-W12	+EC01-X2	=AIN+ELM-B2	TPE	2	2	0.34mm²				&EFS=AIN+EC01/1.5
=AIN+EC01-W13	+EC01-X2	=AIN+ELM-B3	TPE	2	2	0.34mm²				&EFS=AIN+EC01/1.6
=ISN+EC01-W32	+EC01-X2	=ISN+ELM-XS2	OIL RESISTANT UR	7G	7	1mm²		5,5m	926164	&EFS=ISN+EC01/1.0
	+EC01-GND									
=AUA+EC01-W38	+EC01-P1	=AUA+EC01-DS	FLAT TEL	6	4	0,25mm²		2,275m	929160	&EFS=AUA+EC01/1.5



# BILL OF PLUGS

2LP8\_RICKEL\_CONN\_22

DESIGNATION	AMOUNT	ARTICLE NUMBER	DESIGNATION	NUMBER OF WAYS	MANUFACTURER	INTERNAL NO	PICTURE
=PWC+ELM-XS1							
POWER SUPPLY PLUG	1 ST	09310062601	Inserts	6	Harting	921716	
=PWC+ELM-XS1							
POWER SUPPLY PLUG	1 ST	09310062701	Inserts		Harting	921661	
=PWC+ELM-XS1							
POWER SUPPLY PLUG	1 ST	19300161271	Hoods/Housings		Harting	907614	
=PWC+ELM-XS1							
POWER SUPPLY PLUG	1 ST	19300161521	Hoods/Housings		Harting	908281	
=ISN+ELM-XS2							
IN/OUT SIGNALS PLUG	1 ST	09330102601	Inserts		Harting	903740	
=ISN+ELM-XS2							
IN/OUT SIGNALS PLUG	1 ST	09330102701	Inserts		Harting	906632	
=ISN+ELM-XS2							
IN/OUT SIGNALS PLUG	1 ST	19300101270	Hoods/Housings		Harting	900106	
=ISN+ELM-XS2							
IN/OUT SIGNALS PLUG	1 ST	19300101520	Hoods/Housings		Harting	918071	

CREATED BY	AL1	ON THE	07/02/2025
REVISOR		ON THE	LAST REVISION



RITTAL  
GmbH & Co. KG

SK3336.400  
KRAE0081TT00V000EG  
BILL OF PLUGS

DRAWING NUMBER		EP25013		EPLAN Electric P8	2025.0.3
CONTROL PANEL		928930		2LP8_RICKEL_CONN_22	
				PAGES COUNTER	19
				NUMBER OF PAGES	24
&EPC		=		+	
				1	



# BILL OF MATERIALS

2LP8\_RICKEL\_22

DESIGNATION	AMOUNT	LENGTH	ARTICLE NUMBER	DESIGNATION 1	MANUFACTURER	INTERNAL NO	PAGE / PATH
	4	2,09 m	4520004K	H07V-K EMBOSS 1X6 GNYE	LAPP KABEL	928344	&EFS=PWC+EC01/1.0...&EFS=PWC+EC01/1.2
	8	3,74 m	4520013K	H07V-K EMBOSS 1X4 BK	LAPP KABEL	928340	&EFS=PWC+EC01/1.2;&EFS=PWC+EC01/2.2;&EFS=PWC+EC01/2.7
	1	1,26 m	4520003K	H07V-K EMBOSS 1X4 GNYE	LAPP KABEL	928339	&EFS=PWC+EC01/1.1
	2	1,36 m	4520011K	H07V-K EMBOSS 1X1,5 BK	LAPP KABEL	928323	&EFS=PWC+EC01/2.6
	1	1,65 m	4510003K	H05V-K EMBOSS 1X1 GNYE	LAPP KABEL	928313	&EFS=PWC+EC01/2.5
	17	9,39 m	4510043K	H05V-K EMBOSS 1X1 RD	LAPP KABEL	928321	&EFS=AUA+EC01/1.2;&EFS=AUA+EC01/1.6;&EFS=AUA+EC01/2.2...&EFS=AUA+EC01/2.7;&EFS=PWC+EC01/2.6
	1	1,66 m	4520001K	H07V-K EMBOSS 1X1,5 GNYE	LAPP KABEL	928322	&EFS=PWC+EC01/2.6
	13	6,68 m	4510143K	H05V-K EMBOSS 1X1 DBU	LAPP KABEL	928316	&EFS=AUA+EC01/3.2...&EFS=AUA+EC01/3.7
	4	3,02 m	4510053K	H05V-K EMBOSS 1X1 WH	LAPP KABEL	928320	&EFS=AIN+EC01/1.3...&EFS=AIN+EC01/1.5;&EFS=AIN+EC01/1.7
	4	2,36 m	4510093K	H05V-K EMBOSS 1X1 OG	LAPP KABEL	928318	&EFS=ISN+EC01/1.2...&EFS=ISN+EC01/1.4
0001	1		249-116	Screwless end stop	WAGO	904502	(AMB1.S1)
+ELM-B1	1		NTC030WP00	PROBE NTC, IP68, WIRE 3m, -50/+105°C	CAREL	903060	&EFS=AIN+EC01/1.4
+ELM-B2	1		NTC030WP00	PROBE NTC, IP68, WIRE 3m, -50/+105°C	CAREL	903060	&EFS=AIN+EC01/1.5
+ELM-B3	1		NTC030WP00	PROBE NTC, IP68, WIRE 3m, -50/+105°C	CAREL	903060	&EFS=AIN+EC01/1.7
-DS	1		927206	GR DISPLAY TOUCH BLU-E CHILLER	CAREL	927206	&EFS=AUA+EC01/1.5
-F1	1		5SY6202-7	CIRCUIT BREAKER 6KA 2POL C2	Siemens	906346	&EFS=PWC+EC01/2.6
-F2	1		5SY6104-7	CIRCUIT BREAKER 6KA 1POL C4	Siemens	903661	&EFS=PWC+EC01/2.6
GND	25			SCREW TC M5x10 ZN-ST 4.8	---	915741	(AMB1.S1)
-K1	1		3RT2018-1AB01	CONTACTOR,AC3:7,5KW 1NO AC24V 50/60HZ	Siemens	919997	&EFS=AUA+EC01/2.7
-K1	1		3RA1921-1D	LINK MODULE F.3RV S00/S0, 3RT S00	Siemens	920186	&EFS=AUA+EC01/2.7
-K2	1		3RT2015-1AB01	CONTACTOR,AC3:3KW 1NO AC24V 50/60HZ	Siemens	919835	&EFS=AUA+EC01/2.5
-K2	1		3RA1921-1D	LINK MODULE F.3RV S00/S0, 3RT S00	Siemens	920186	&EFS=AUA+EC01/2.5
-K3	1		3RT2015-1AB01	CONTACTOR,AC3:3KW 1NO AC24V 50/60HZ	Siemens	919835	&EFS=AUA+EC01/2.3
-K3	1		3RA1921-1D	LINK MODULE F.3RV S00/S0, 3RT S00	Siemens	920186	&EFS=AUA+EC01/2.3
-KA1	1		55.34.8.024.0040	MINIATURE GENERAL PURPOSE RELAY, 4 POLE, 7 A - AC (50/60 HZ) - 24 V	Finder	903668	&EFS=AUA+EC01/1.2
-KA1	1		94.74	SOCKET FOR 55.34 RELAY	Finder	903669	&EFS=AUA+EC01/1.2
-KG	1		3UG5511-1AR20	PHASE CONTROL RELAY	Siemens	917383	&EFS=PWC+EC01/2.8
-P1	1		UP3B02200TBM0	TERMOREG PROGRAM CAREL UP3B02200TBM0	CAREL	928216	&EMZ+EC01/1.0



# BILL OF MATERIALS

2LP8\_RICKEL\_22

DESIGNATION	AMOUNT	LENGTH	ARTICLE NUMBER	DESIGNATION 1	MANUFACTURER	INTERNAL NO	PAGE / PATH
-P1	1		UP3CON0M00	TERMOREG ACCESS CAREL UP3CON0M00	CAREL	928217	&EMZ+EC01/1.0
-Q0	1		22003004	MANUALLY OPERATED AND MODULAR MULTIPOLAR LOAD BREAK SWITCHES	SOCOMEK	921975	&EFS=PWC+EC01/1.1
-Q0	1		1474 1111	RED KNOB TYPE S00	SOCOMEK	921673	&EFS=PWC+EC01/1.1
-Q0	1		1407 0532	OPERATING SHAFT 320mm	SOCOMEK	911759	&EFS=PWC+EC01/1.1
-Q0	1		2294 3005	3 POLE TERMINALS COVER 16...40	SOCOMEK	921726	&EFS=PWC+EC01/1.1
-Q0	1		2200 9005	GROUND POLE 16...40	SOCOMEK	925147	&EFS=PWC+EC01/1.1
-Q1	1		3RV2011-1JA15	CIRCUIT-BREAKER SCREW CONNECTION 10A	Siemens	919996	&EFS=PWC+EC01/1.4
-Q2	1		3RV2011-1AA15	CIRCUIT-BREAKER SCREW CONNECTION 1.6A	Siemens	920233	&EFS=PWC+EC01/1.6
-Q3	1		3RV2011-1CA15	CIRCUIT-BREAKER SCREW CONNECTION 2.5A	Siemens	919426	&EFS=PWC+EC01/1.8
-T1	1		TCN80000200.057	200VA 0-230-400-415-440-460-480/0-24	TECNOCABLAGGI	905560	&EFS=PWC+EC01/2.6
U1	1		1057000	Compact enclosure AX 500x700x250	Rittal	1057000	(AMB1.S1)
U2	1	0,45 m	25x80 / 4x6	WIRING DUCT 25x80 PLASTIC 4X6	---	909218	(AMB1.S1)
U3	1	0,45 m	40x80 / 4x6	WIRING DUCT 40x80 PLASTIC 4X6	---	909700	(AMB1.S1)
U4	1	0,39 m	40x80 / 4x6	WIRING DUCT 40x80 PLASTIC 4X6	---	909700	(AMB1.S1)
U5	1	0,23 m	25x80 / 4x6	WIRING DUCT 25x80 PLASTIC 4X6	---	909218	(AMB1.S1)
U6	1	0,23 m	35x7,5	DIN RAIL OMEGA 35x7,5	---	905499	(AMB1.S1)
U7	1	0,23 m	35x7,5	DIN RAIL OMEGA 35x7,5	---	905499	(AMB1.S1)
U8	1			STAND OFFS H Mx F L20 M6 ZN-ST	---	904235	(AMB1.S1)
U9	1			STAND OFFS H Mx F L20 M6 ZN-ST	---	904235	(AMB1.S1)
U10	1	0,32 m	35x7,5	DIN RAIL OMEGA 35x7,5	---	905499	(AMB1.S1)
U11	1			STAND OFFS H Mx F L20 M6 ZN-ST	---	904235	(AMB1.S1)
U12	1			STAND OFFS H Mx F L20 M6 ZN-ST	---	904235	(AMB1.S1)
U13	1	0,33 m	35x7,5	DIN RAIL OMEGA 35x7,5	---	905499	(AMB1.S1)
U119	1			STAND OFFS H Fx F 19x25x5 PE	---	909454	(AMB1.S1)
U120	1			STAND OFFS H Fx F 19x25x5 PE	---	909454	(AMB1.S1)
U199	1		2563300	Plastic gland plate	Rittal	2563300	(AMB1.S1)
U262	1			STAND OFFS H Mx F L20 M6 ZN-ST	---	904235	(AMB1.S1)
U263	1			STAND OFFS H Mx F L20 M6 ZN-ST	---	904235	(AMB1.S1)



BILL OF MATERIALS

2LP8\_RICKEL\_22

DESIGNATION	AMOUNT	LENGTH	ARTICLE NUMBER	DESIGNATION 1	MANUFACTURER	INTERNAL NO	PAGE / PATH
U264	1	0,45 m	35x7,5	DIN RAIL OMEGA 35x7,5	---	905499	(AMB1.S1)
-V1	1		3RT29161BB00	SURGE SUPPRESSOR, VARISTOR,	Siemens	919432	&EFS=AUA+EC01/2.7
-V2	1		3RT29161BB00	SURGE SUPPRESSOR, VARISTOR,	Siemens	919432	&EFS=AUA+EC01/2.5
-V3	1		3RT29161BB00	SURGE SUPPRESSOR, VARISTOR,	Siemens	919432	&EFS=AUA+EC01/2.4
-W0	1	6,40 m	1119504	4G4mm² OIL RESISTANT UR	---	926261	&EFS=PWC+EC01/1.1
-W1	1	2,00 m		4G2,5mm² OIL RESISTANT UR	---	926168	&EFS=PWC+EC01/1.3
-W2	1	3,20 m		4G1,5mm² OIL RESISTANT UR	---	926163	&EFS=PWC+EC01/1.5
-W3	1	2,00 m		4G1,5mm² OIL RESISTANT UR	---	926163	&EFS=PWC+EC01/1.7
-W6	1	2,00 m		2X1mm² OIL RESISTANT UR	---	926161	&EFS=AUA+EC01/1.2
-W7	1	1,30 m		2X1mm² OIL RESISTANT UR	---	926161	&EFS=AUA+EC01/2.8
-W8	1	2,00 m		2X1mm² OIL RESISTANT UR	---	926161	&EFS=AUA+EC01/3.6
-W32	1	5,50 m	1119207	7G1mm² OIL RESISTANT UR	---	926164	&EFS=ISN+EC01/1.0
-W38	1	2,27 m	929160	CABLE WIRED KRAE-TTC3 DISPLAY TOUCH	---	929160	&EFS=AUA+EC01/1.5
+EC01-W401	1	0,46 m		CU BAR 12X3	---	909453	(AMB1.S1)
-WQD	1		3RV1915-1BB	3-PHASE BUSBARS	Siemens	909357	&EFS=PWC+EC01/1.3
+EC01-X2	4		280-402	Cross-connector for terminal block	WAGO	909228	(AMB1.S1)
-X2	20		280-901	2-conductor through terminal block	WAGO	903680	&EFS=AIN+EC01/1.4;&EFS=AIN+EC01/1.5;&EFS=AIN+EC01/1.7;&EFS=AUA+EC01/1.2;&EFS=AUA+EC01/2.8;&EFS=AUA+EC01/3.6;&EFS=AUA+EC01/3.7;&EFS=ISN+EC01/1.0.&EFS=ISN+EC01/1.2
-X2	2		249-116	Screwless end stop	WAGO	904502	&EFS=AUA+EC01/2.8;&EFS=ISN+EC01/1.4
-X2	1		280-309	End and intermediate plate	WAGO	904525	&EFS=AUA+EC01/2.8
-Z1	1		0475178281	FERRITE CABLE 21X21X39.4		927281	&EFS=PWC+EC01/2.6
Z_MIN_EL	4			SCREW TCB M6x12 ZN-ST	---	903408	&EFS=PWC+EC01/1.9
Z_MIN_EL	4			SCREW TCB M6x16 ZN-ST 8.8	---	903409	&EFS=PWC+EC01/1.9
Z_MIN_EL	20			SCREW TC FLAN 4.2X13	---	922277	&EFS=PWC+EC01/1.9
Z_MIN_EL	1			SCREW TE M6x16 PG ZN-ST 8.8	---	216955	&EFS=PWC+EC01/1.9
Z_MIN_EL	26			SCREW TC M5x10 ZN-ST 4.8	---	915741	&EFS=PWC+EC01/1.9
Z_MIN_EL	28			WASHER P 5,3-10 ZN-ST	---	903585	&EFS=PWC+EC01/1.9
Z_MIN_EL	1			WASHER P 6,4-12 ZN-ST	---	200004	&EFS=PWC+EC01/1.9
Z_MIN_EL	1			WASHER TOOTH 4,3-8 ZN-ST	---	200144	&EFS=PWC+EC01/1.9



BILL OF MATERIALS

2LP8\_RICKEL\_22

DESIGNATION	AMOUNT	LENGTH	ARTICLE NUMBER	DESIGNATION 1	MANUFACTURER	INTERNAL NO	PAGE / PATH
Z_MIN_EL	27			WASHER TOOTH 5,3-10 ZN-ST	---	200206	&EFS=PWC+EC01/1.9
Z_MIN_EL	9			WASHER TOOTH 6,4x11 ZN-ST	---	200294	&EFS=PWC+EC01/1.9
Z_MIN_EL	1			NUT E M5x4 6S ZN-ST	---	200202	&EFS=PWC+EC01/1.9
Z_MIN_EL	4			NUT E M6x5 PG 6S ZN-ST	---	200295	&EFS=PWC+EC01/1.9
Z_MIN_EL	4			GASKET NYLON PA6.6 D12.5-6.4	---	201320	&EFS=PWC+EC01/1.9
Z_MIN_EL	2			SCREW STEI M5x10 PG ZN-ST	---	915261	&EFS=PWC+EC01/1.9
Z_MIN_EL	1		SIT0A07	LABEL-SUP GENERIC 52X17	3M	907060	&EFS=PWC+EC01/1.9
Z_MIN_EL	1		SIT0V02	LABEL-SUP GLAS 52X17	3M	907062	&EFS=PWC+EC01/1.9
Z_MIN_EL	1		SI2K1550W	PRINT-LABEL 50X15 WHITE NO-FIX	3M	907057	&EFS=PWC+EC01/1.9
Z_MIN_EL	1		TCS95X100BK	SLEEVE HEATSHRINK CEMBRE TCS95X100BK	CEMBRE	904698	&EFS=PWC+EC01/1.9
Z_MIN_EL	1		2595000	Cable conduit / SZ Cable conduit, ø 16 mm, L: 25 m	Rittal	923767	&EFS=PWC+EC01/1.9
Z_MIN_EL	3		BF-U4	CABLE-TERMINAL FORK CEMBRE BF-U4	CEMBRE	903323	&EFS=PWC+EC01/1.9
Z_MIN_EL	2		9037450000	END-SLEEVE TWIN CEMBRE PKT110	CEMBRE	909225	&EFS=PWC+EC01/1.9
Z_MIN_EL	56		PKT108	END-SLEEVE TWIN CEMBRE PKT108	CEMBRE	903346	&EFS=PWC+EC01/1.9
Z_MIN_EL	10		PKD2508	END-SLEEVE SINGLE CEMBRE PKD 2508	CEMBRE	904250	&EFS=PWC+EC01/1.9
Z_MIN_EL	1		GF-M4	CABLE-TEMINAL RING CEMBRE GF-M4	CEMBRE	903318	&EFS=PWC+EC01/1.9
Z_MIN_EL	1		GF-M5	CABLE-TEMINAL RING CEMBRE GF-M5	CEMBRE	903319	&EFS=PWC+EC01/1.9
Z_MIN_EL	1		GF-M5	CABLE-TERMINAL RING CEMBRE RF-M5	CEMBRE	903313	&EFS=PWC+EC01/1.9
Z_MIN_EL	20			CABLE TIE 140 X 3,6 MM	WÜRTH SRL	206597	&EFS=PWC+EC01/1.9
Z_MIN_EL	24		SI2KTB5210CW	PRINT-LABEL 10X5 WHITE FRAME-UP	3M	906924	&EFS=PWC+EC01/1.9
Z_MIN_EL	8		SI2K40720W	PRINT-LABEL 20X5 WHITE ADHESIVE	3M	909278	&EFS=PWC+EC01/1.9
Z_MIN_EL	95		201/10	LABEL-SUP SLEEVE 1,5-2,5 X 10	3M	909280	&EFS=PWC+EC01/1.9
Z_MIN_EL	95		SI2K02W/10N	PRINT-LABEL 10X4 WHITE NO-FIX	3M	906481	&EFS=PWC+EC01/1.9
Z_MIN_EL	3			ETI FINISH ADHESIVE GROUND	---	200023	&EFS=PWC+EC01/1.9
Z_MIN_EL	16		SI2KFX0615W	PRINT-LABEL 15X6 WHITE ADHESIVE	3M	909279	&EFS=PWC+EC01/1.9
Z_MIN_EL	1		PKT1512	END-SLEEVE TWIN CEMBRE PKT1512	CEMBRE	909226	&EFS=PWC+EC01/1.9
Z_MIN_EL	12		PKD412	END-SLEEVE SINGLE CEMBRE PKD412	CEMBRE	903341	&EFS=PWC+EC01/1.9
Z_MIN_EL	6		GF-U4	CABLE-TERMINAL FORK CEMBRE GF-U4	CEMBRE	921698	&EFS=PWC+EC01/1.9



BILL OF MATERIALS

2LP8\_RICKEL\_22

DESIGNATION	AMOUNT	LENGTH	ARTICLE NUMBER	DESIGNATION 1	MANUFACTURER	INTERNAL NO	PAGE / PATH
Z_PUNT	22		AS 4050.783	Wire end ferrules loose 4mm² L=12mm	Rittal	4050783	&EFS=PWC+EC01/1.8
Z_PUNT	88		AS 4050.732	Wire end ferrules loose 1mm² L=8mm	Rittal	4050732	&EFS=PWC+EC01/1.8
Z_PUNT	14		AS 4050.733	Wire end ferrules loose 1,5mm² L=8mm	Rittal	4050733	&EFS=PWC+EC01/1.8
Z_PUNT	8		AS 4050.736	Wire end ferrules loose 6mm² L=12mm	Rittal	4050736	&EFS=PWC+EC01/1.8