

RITTAL GmbH & Co. KG

AUF DEM STÜTZELBERG
D-35745 Herborn

<http://www.rittal.de>

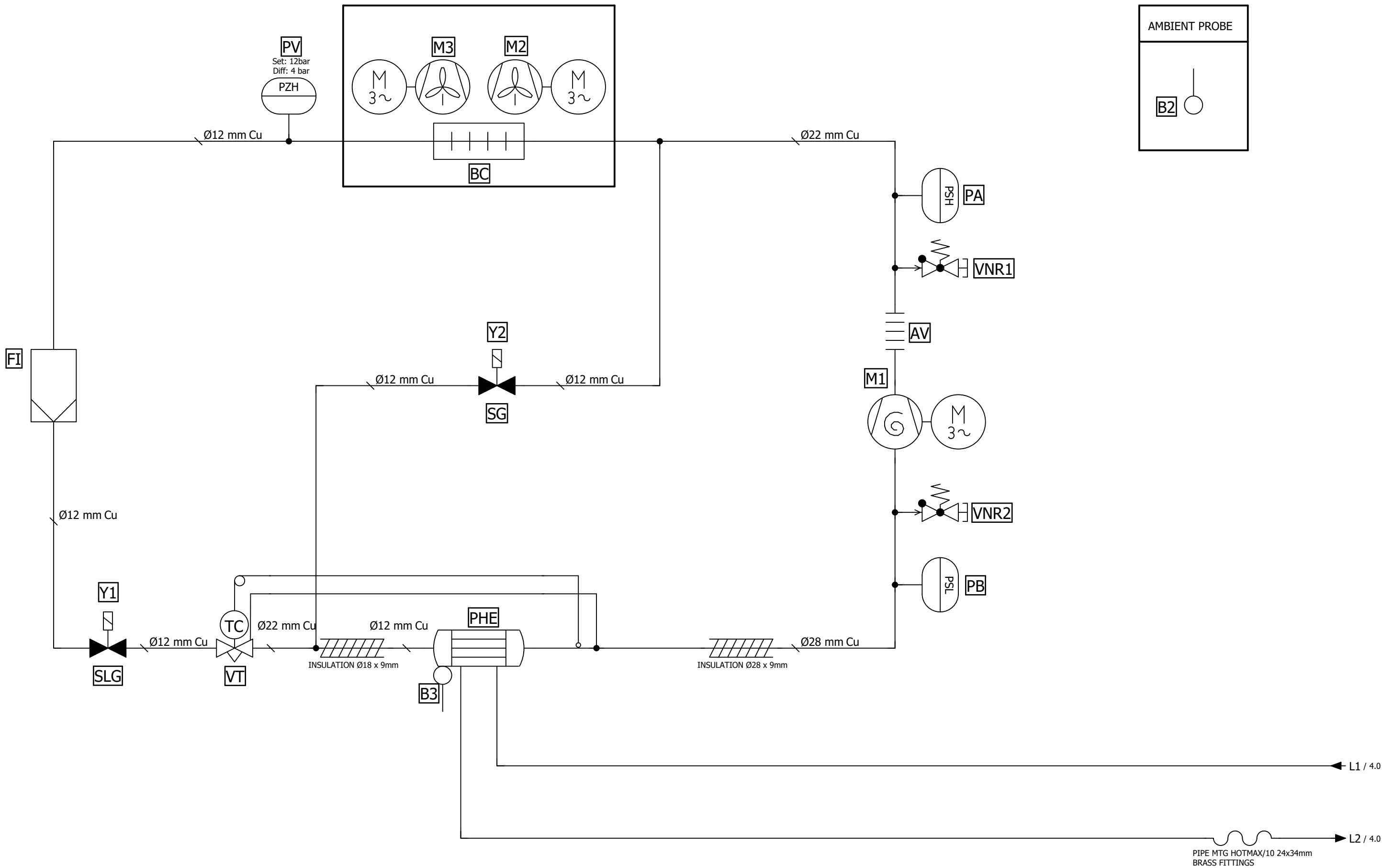


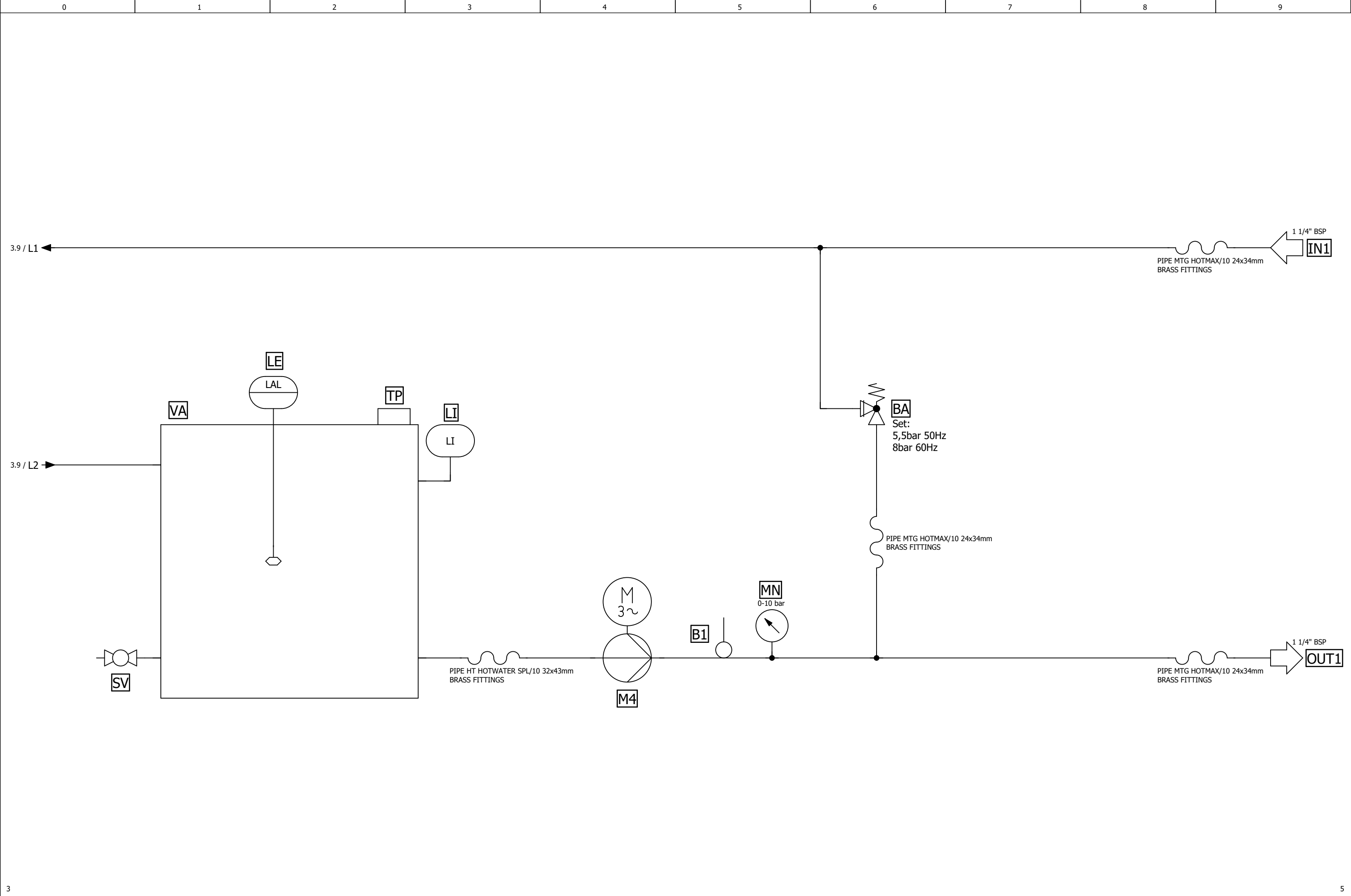
MODEL	:	SK3336.435	REFRIGERANT	:	R513A	
DRAWING NUMBER	:	FP25118	-	VOLTAGE	:	400V 3 50Hz / 460V 3 60Hz [TT]
PRODUCT FAMILY	:	KRAE	161		:	
VARIANT/SPECIAL	:	V395			:	
				CUSTOMER	:	
				REFERENCE	:	

CREATED THE	:	10/10/2025	BY	TG1			
CHANGED ON THE	:		BY		NUMBER OF PAGES	:	5

PAGE OVERVIEW

2LP8_PAGKEL			
PAGE	DESIGNATION	DATE REVISION	REVISOR
1	COVER		
2	PAGE OVERVIEW		
3	REFRIGERANT CIRCUIT		
4	HYDRAULIC CIRCUIT		
5	BILL OF MATERIAL		





3			5		
CREATED BY	TG1	ON THE	10/10/2025	DRAWING NUMBER	FP25118
REVISOR		ON THE	LAST REVISION	REFRIGERANT	R513A
				2LP8_CARTRIT_FLUID 09.10.2017	EPLAN Fluid 2025.0.3

BILL OF MATERIAL



2LP8_RICKEL_FLUID

DESIGNATION	AMOUNT	ARTICLE NUMBER	DESIGNATION 1	DESIGNATION 2	MANUFACTURER	INTERNAL NO	PAGE / PATH
AV	1	VAS22	REFTUBE ANTIV 22mm STSTEEL PN35		VERCO	900450	3.6
BA	1	682182001	DISCHARGE VALVE 90° 1" BRONZE	2-10 bar	ACQUATICA SRL	910497	4.6
BC	1	J000459	HEX F-TUB MICRO CN 25 10 32 L25 25 730 1072 2	730x1072	CLIMETAL	926222	3.3
FI	1	023Z4571	FILTER DEIDR DANFOSS DML084	SALD 12mm R410A, R407C, R134a, R404A	DANFOSS	916264	3.1
LE	1	EURP006F7001/0	ELECTRIC LEVEL EUROSITCH P006 2 LEV.	BLU-1° LIV MARR-2°LIV NERO-3°COMUNE	EUROSITCH	918289	4.2
M1	1	MLZ066T4LC9A	COMP SCROLL DANFOSS MLZ066T4LC9A	400 3 50,460 3 60 148,80cm3 R513A cURu 121L8657	DANFOSS	928909	3.6
M2	1	A4D450-A014-10	FAN AXIAL EBM A4D450-AO14-10	450mm 400 3 50, 480 3 60 +GRIGLIA 106FG0702	EBMPAPST SRL	916116	3.4
M3	1	A4D450-A014-10	FAN AXIAL EBM A4D450-AO14-10	450mm 400 3 50, 480 3 60 +GRIGLIA 106FG0702	EBMPAPST SRL	916116	3.3
M4	1	5HM07S22T6PQQV	POMPA LOWARA 5HM07S22T6PQQV	400 3 50,460 3 60 SIC-SIC-FPM UL CSA	LOWARA SRL	927766	4.4
MN	1	FMTPG351014LF	MANOMETER DIPPED GLICERINE FIMET 0-10bar	D.63 1/4" PG351014LF	FIMET	900442	4.5
PA	1	715556	PRESSHP PSAH FIX 21-16	ALCO PS3-W6S	ALCO	909394	3.6
PB	1	EBAL1702E	PRESS LP FIX 0,5-2	ALCO PS3-A1S	ALCO	902408	3.6
PHE	1	B80ASHx30/1P-SC-M	SCAMBIATORE A PIASTRE SWEP B80ASHx30/1P-SC-M	SALDOBRASATO AL RAME 12,8+28U+2x1 1/4"&28U	SWEP INTERNATIONAL AB	928910	3.3
PV	1	060-509666	PRESSHP PSAH VAR 8-32 RIARMO AUTOMATICO	DANFOSS KP5	DANFOSS	902393	3.2
SG	1	VBK502	VALV REF SOL RSG VBK502	1/2" (12mm) 24Vdc	REGEL-UND STEUERGERÄTE GMBH	917296	3.4
SLG	1	1078N/M12S	VALV REF SOL CASTEL 1078N/M12S	12mm , UL, WITHOUT COIL	CASTEL SRL	927729	3.1
SV	1	1032404	SHUTTER VALVE M1/2"	PN16 PLUG+HOSE FITTINGS BRASS	OVENTROP SRL	925478	4.0
VA	1	J000444	CAR TANK 710x620x230 PE 80L	4x1"1/4+2x1"+1x1/2" LE, BRASS SLEEVES	VERZELLES SRL	926305	4.1
VT	1	067N5092	VALVEXP TERMOST DANFOSS R513A TGE 10-11	067N5092 SALD 12-22-6 R513A	DANFOSS	928907	3.2
Y1	1	9320/RD2	VALV-COIL GAS CASTEL 9320/RD2	24VDC-50/60Hz, UL, 8W, WITH CONNECTOR 9150/R02	CASTEL SRL	927732	3.1

4