

RITTAL GmbH & Co. KG

AUF DEM STÜTZELBERG
D-35745 Herborn

<http://www.rittal.de>

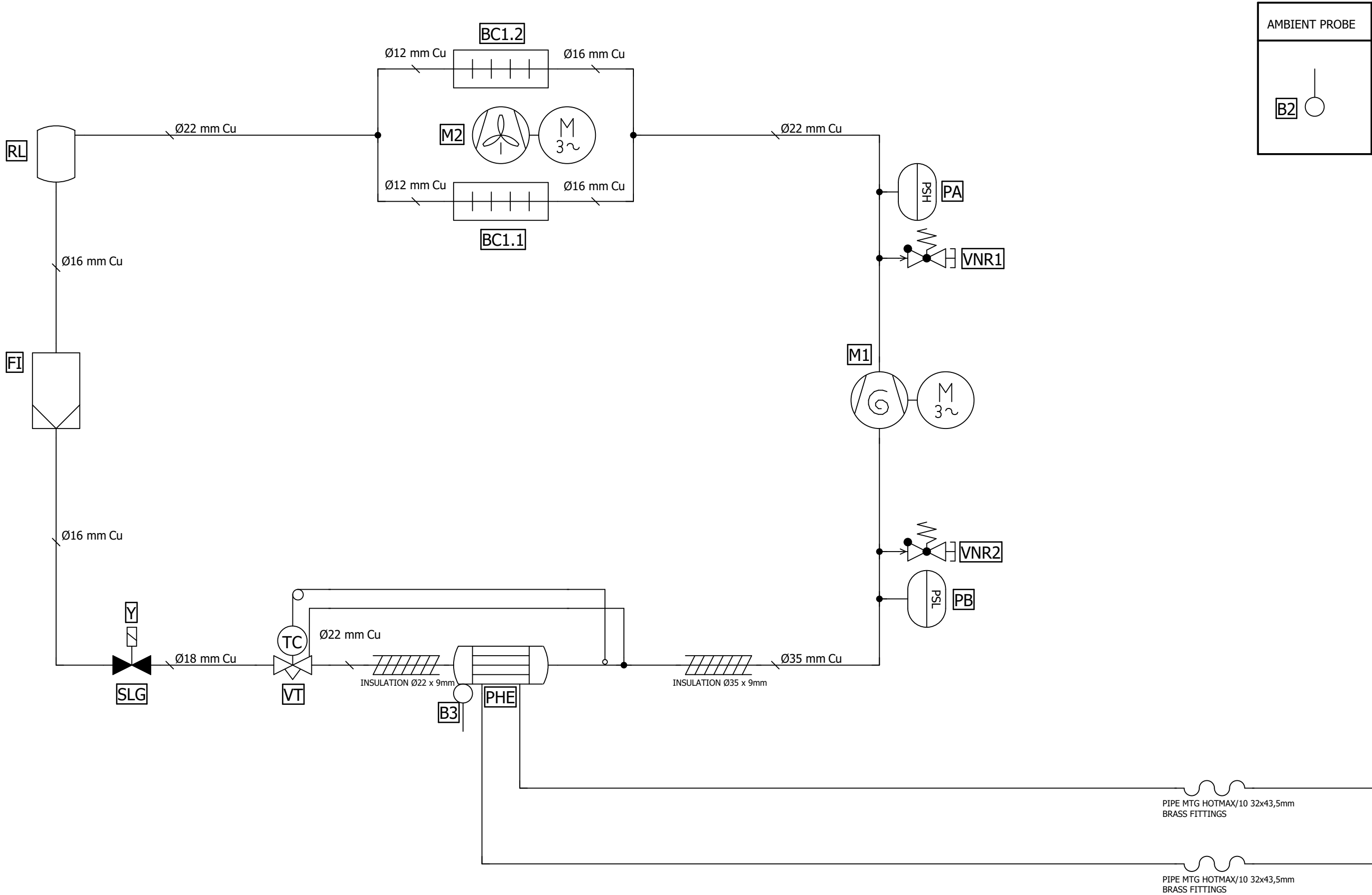


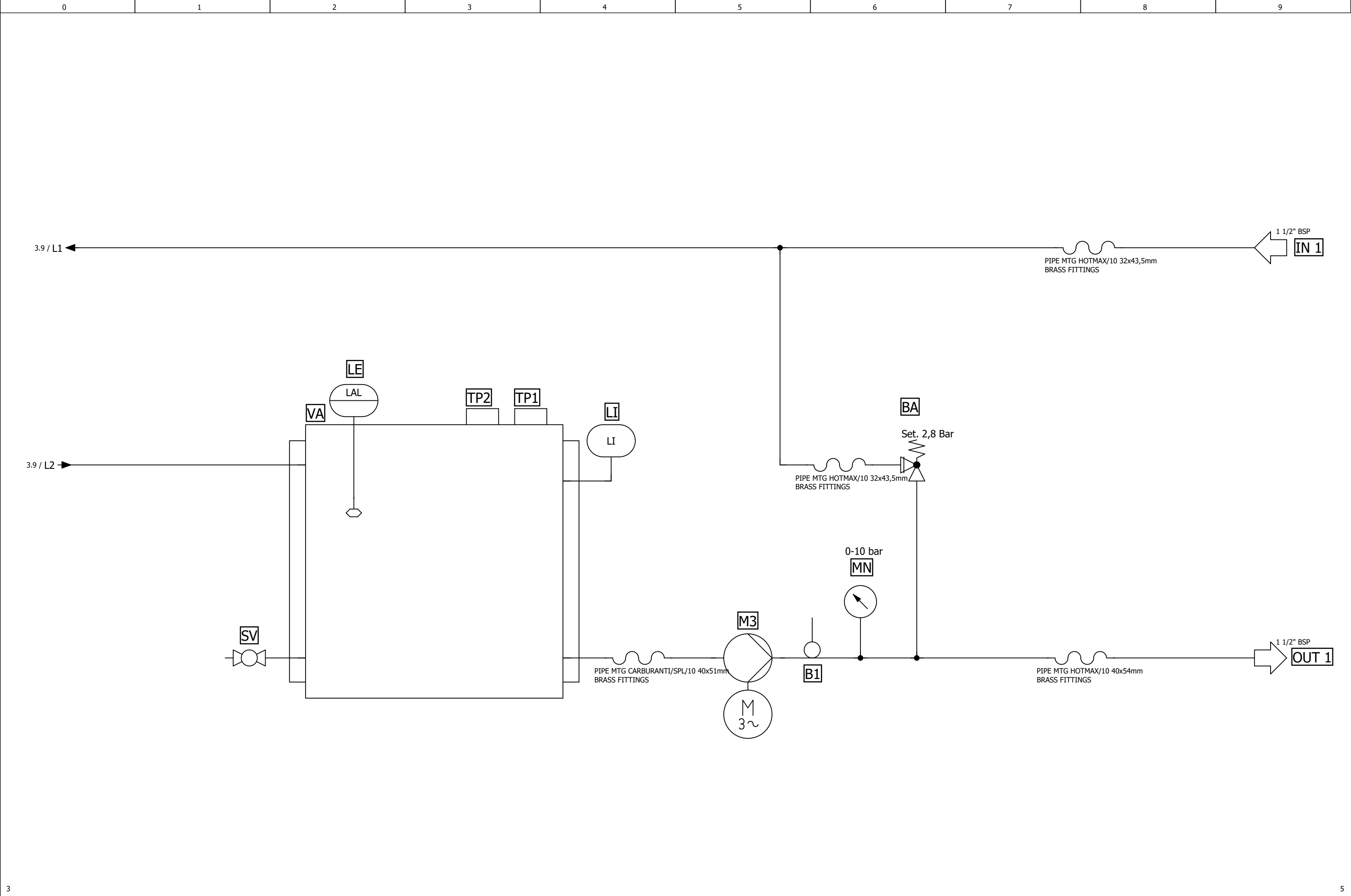
MODEL	:	SK3336.460	REFRIGERANT	:	R513A	
DRAWING NUMBER	:	FP25024	-	VOLTAGE	:	400V 3 50Hz / 460V 3 60Hz [TT]
PRODUCT FAMILY	:	KRAE	0251	:		
VARIANT/SPECIAL	:	V000	:			
			CUSTOMER	:		
			REFERENCE	:		

CREATED THE	:	26/08/2025	BY	GF1	
CHANGED ON THE	:		BY		NUMBER OF PAGES : 5

PAGE OVERVIEW

2LP8_PAGKEL			
PAGE	DESIGNATION	DATE REVISION	REVISOR
1	COVER		
2	PAGE OVERVIEW		
3	REFRIGERANT CIRCUIT		
4	HYDRAULIC CIRCUIT		
5	BILL OF MATERIAL		





BILL OF MATERIAL



2LP8_RICKEL_FLUID

DESIGNATION	AMOUNT	ARTICLE NUMBER	DESIGNATION 1	DESIGNATION 2	MANUFACTURER	INTERNAL NO	PAGE / PATH
BA	1	90° 1"1/4 BRONZO	DISCHARGE VALVE 90° 1"1/4 BRONZE	2-6bar CAPPuccio PROTEZIONE	ACQUATICA SRL	923645	4.6
BC1.1	1	MCHE D1700-C	SCAMB MICRO MCHE D1700-C 25.4X1.3X26 DF0091	PEDI M/8 DANFOSS MCHE CONDENSER 021U0085	DANFOSS	927755	3.3
BC1.2	1	MCHE D1700-C	SCAMB MICRO MCHE D1700-C 25.4X1.3X26 DF0091	PEDI M/8 DANFOSS MCHE CONDENSER 021U0085	DANFOSS	927755	3.3
FI	1	023Z4588	FILTER DEIDR DANFOSS DML305S	SALD 16 R134A, R407C, R404A	DANFOSS	915602	3.1
LE	1	EURP006F7001/0	ELECTRIC LEVEL EUROSITCH P006 2 LEV.	BLU-1° LIV MARR-2°LIV NERO-3°COMUNE	EUROSITCH	918289	4.2
LI	1	HCX.127-INOX-BP	SIGHT LEVEL ELESa HCX.127-STAINST-BP		ELESa SPA	902344	4.4
M1	1	SZ185S4R	COMP SCROLL DANFOSS SZ185S4R	400-460 3 50-60 250cm3 R134A R407C R513A	DANFOSS	900569	3.6
M2	1	A3G630AS2509 106FG0476 106FB1309	KIT ASSEMBLATO EBM A3G630AS2509 106FG0476	106FB1309 400 3 50 - 460 3 60	EBMPAPST SRL	928561	3.3
M3	1	CIE2106/5/D-V	PUMP LOWARA CIE2106/5/D-V	400 3 50, 460 3 60 SIC-SIC-FPM	LOWARA SRL	925751	4.5
MN	1	FMTPG351014LF	MANOMETER DIPPED GLICERINE FIMET 0-10bar	D.63 1/4" PG351014LF	FIMET	900442	4.6
PA	1	715556	PRESSHP PSAH FIX 21-16	ALCO PS3-W6S	ALCO	909394	3.6
PB	1	EBAL1702E	PRESS LP FIX 0,5-2	ALCO PS3-A1S	ALCO	902408	3.6
PHE	1	03473399.0	HEX PLATE SWEP V80Hx60/1P-SC-S	35,1 16 2*1"1/4 RAME	SWEP INTERNATIONAL AB	907036	3.3
RL	1	130.1000.A	LIQREC 5,3 FRIGOMEC A/107/33/E300/U440	IN 19mm OUT 16mm	FRIGO MEC SPA	908443	3.1
SLG	1	1078N/5S	VALV REF SOL CASTEL 1078N/5S	16mm , UL, WITHOUT COIL	CASTEL SRL	927730	3.1
SV	1	122600102	BALL VALVE 2VIE MINI Mx F 1/2" BRASSCr	PN10 LEVER HANDLE LOMB 122600102	LOMBARDA RACCORDI SRL	902688	4.1
TP1	1	401 / 2.1/2"	CAP MALE 2"1/2 PE L.D. YELLOW	OLEODINAMICA PASINI 401 / 2.1/2"	OLEODINAMICA PASINI	927149	4.3
TP2	1	OM08PFS8	SCREW PLUG M 200 PE	OM08PFS8 PER VASCA	ARALDI ALESSANDRO	911151	4.3
VA	1	J002382	CAR KRAE 250-400 CORPO VASCA INOX CON	MANICOTTI 4x1"1/2+1x1"1/4+1x1/2"	METALINOX S.R.L	927780	4.2
VA	1	J003059	CAR COPERCHIO VASCA KRAE250/400	INOX TUBO CARICO	METALINOX S.R.L	928119	4.2
VT	1	067N5082	VALVEXP TERMOST DANFOSS R513A TGE 40-26	067N5082 TGE 17 SALD 22-28-6 R513A	DANFOSS	929235	3.2
Y	1	9300/RA2	VALV-COIL GAS CASTEL 9360/RA2	24VAC-50/60Hz, UL, 8W, WITH CONNECTOR 9150/R02	CASTEL SRL	927731	3.1

4