

RITTAL GmbH & Co. KG

AUF DEM STÜTZELBERG
D-35745 Herborn

<http://www.rittal.de>



MODEL : SK3336.460

DRAWING NUMBER : FP21196 -

PRODUCT FAMILY : KRAE 0250

VARIANT/SPECIAL : V000

REFRIGERANT : R410A

VOLTAGE : 400V 3 50Hz / 460V 3 60Hz [TT]

CUSTOMER :

REFERENCE :

CREATED THE : 02/11/2021 BY GF1

CHANGED ON THE : BY NUMBER OF PAGES : 5

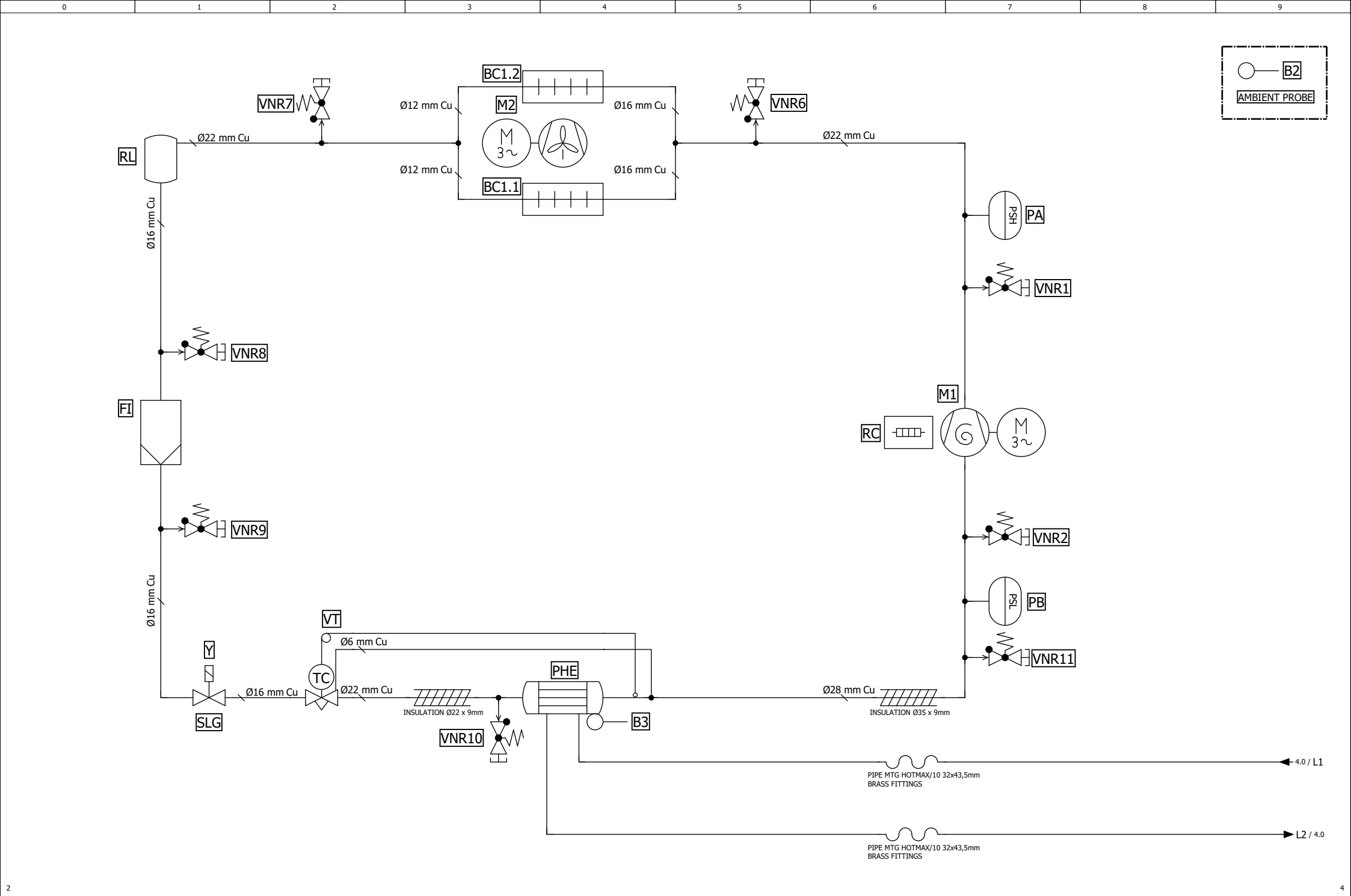


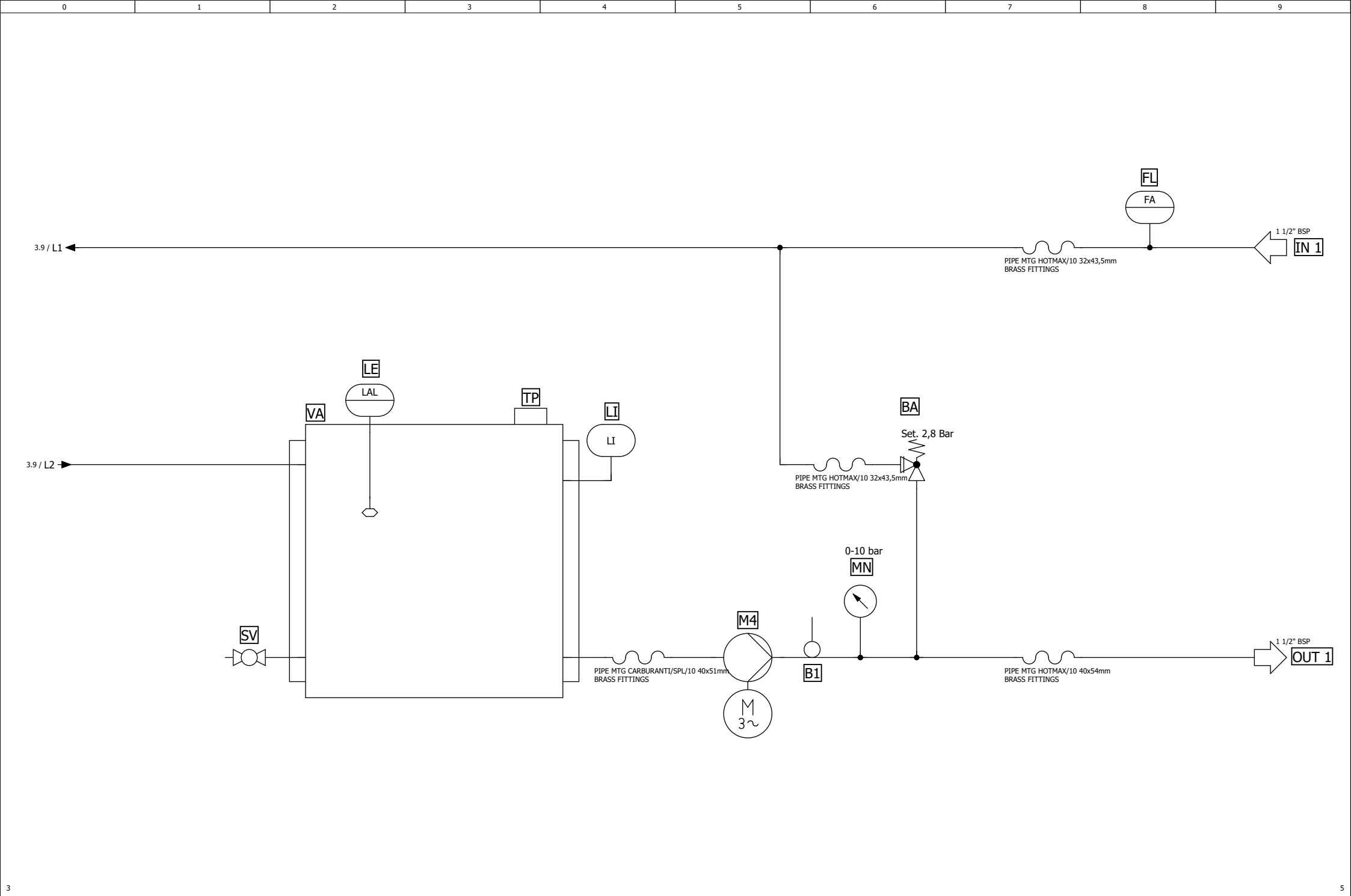
RITTAL
GmbH & Co. KG

SK3336.460
KRAE 0250 V000
COVER

PAGE OVERVIEW

ZLP8_PAGKEL			
PAGE	DESIGNATION	DATE REVISION	REVISOR
1	COVER		
2	PAGE OVERVIEW		
3	REFRIGERANT CIRCUIT		
4	HYDRAULIC CIRCUIT		
5	BILL OF MATERIAL		





BILL OF MATERIAL



2LP8_RICKEL_FLUID

DESIGNATION	AMOUNT	ARTICLE NUMBER	DESIGNATION 1	DESIGNATION 2	MANUFACTURER	INTERNAL NO	PAGE / PATH
BA	1	90° 1"1/4 BRONZO	DISCHARGE VALVE 90° 1"1/4 BRONZE	2-6bar CAPPUCCIO PROTEZIONE	ACQUATICA SRL	923645	4.6
BC1.1	1	MCHE D1700-C	SCAMB MICRO MCHE D1700-C 25.4X1.3X26 DF0091	PEDI M/8 DANFOSS MCHE CONDENSER 021U0085	DANFOSS	927755	3.4
BC1.2	1	MCHE D1700-C	SCAMB MICRO MCHE D1700-C 25.4X1.3X26 DF0091	PEDI M/8 DANFOSS MCHE CONDENSER 021U0085	DANFOSS	927755	3.4
FI	1	023Z4595	FILTER DEIDRATORE DANFOSS DML415s 023Z4595	IN 5/8" OUT 5/8"	DANFOSS	927757	3.1
FL	1	POR00312	FLOWSWITCH SIKA VHS32M 1"1/4	14,5-19 lt/min OTTONE PALETTA	SIKA SYSTEMTECHNIK	902040	4.8
LE	1	EURP006F7001/0	ELECTRIC LEVEL EUROSWITCH P006 2 LEV.	BLU-1° LIV MARR-2°LIV NERO-3°COMUNE	EUROSWITCH	918289	4.2
LI	1	HGX.127-INOX-BP	SIGHT LEVEL ELESА HGX.127-STAINST-BP		ELESА SPA	902344	4.4
M1	1	HGJ121T4LC6	COMP SCROLL DANFOSS HGJ121T4LC6	400 3 50,460 3 60 116,4cm3 R410A cURus	DANFOSS	927777	3.7
M2	1	A4D630AI0101 106FG0476 106FB1309	KIT ASSEMBLATO EBM A4D630AI0101 106FG047	106FB1309 400 3 50 - 460 3 60	EBMPAPST SRL	927756	3.4
M4	1	CIE2106/5/D-V	PUMP LOWARA CIE2106/5/D-V	400 3 50, 460 3 60 SIC-SIC-FPM	LOWARA SRL	925751	4.5
MN	1	FMTPG351014LF	MANOMETER DIPPED GLICERINE FIMET 0-10bar	D.63 1/4" PG351014LF	FIMET	900442	4.6
PA	1	061F7515	PRESSHP PSAH FIX 42	DANFOSS ACB-2UB151W cURus	DANFOSS	916189	3.7
PB	1	061F7418	PRESSOSTATO BASSA LP FIX 2,2 - 3,4	DANFOSS ACB-2UA996W cURus	DANFOSS	916190	3.7
PHE	1	P80ASHx050/1P-SC-M	SCAMBIATORE A PIASTRE SWEP P80ASHx050/1P-SC-M	SALDOBRASATO AL RAME 16+35.1+2x1 1/4"828U		927762	3.4
RC	1	120Z5012	CRANHEAT BAND DANFOSS 120Z5012	70W 460V	DANFOSS	916381	3.6
RL	1	140.0193.B	LIQREC 2.6 FRIGOMEC 140.0193.B	IN 12mm OUT 12mm PS45	FRIGO MEC SPA	924038	3.1
SLG	1	1078N/5S	VALV REF SOL CASTEL 1078N/5S	16mm , UL, WITHOUT COIL	CASTEL SR	927730	3.1
SV	1	122600102	BALL VALVE 2VIE MINI MxF 1/2" BRASSCr	PN10 LEVER HANDLE LOMB 122600102	LOMBARDA RACCORDI SRL	902688	4.1
TP	1	401 / 2.1/2"	CAP MALE 2"1/2 PE L.D. YELLOW	OLEODINAMICA PASINI 401 / 2.1/2"	OLEODINAMICA PASINI	927149	4.3
VA	1	J002382	CAR KRAE 250-400 CORPO VASCA INOX CON	MANICOTTI 4x1"1/2+1x1"1/4+1x1/2"	METALINOX S.R.L	927780	4.2
VA	1	J003059	CAR COPERCHIO VASCA KRAE250/400	INOX TUBO CARICO	METALINOX S.R.L	928119	4.2
VT	1	067N3092	VALVEXР TERMOST DANFOSS R410A TGE 20-12,5	067N3092 -- 7/8X1"1/8X1/4" MOP 15 °C	DANFOSS	927759	3.2
Y	1	9300/RA2	VALV-COIL GAS CASTEL 9360/RA2	24VAC-50/60Hz, UL, 8W, WITH CONNECTOR 9150/R02	CASTEL SR	927731	3.1

4

CREATED BY	GF1	ON THE	02/11/2021
REVISOR		ON THE	LAST REVISION



RITTAL
GmbH & Co. KG

SK3336.460
KRAE 0250 V000
BILL OF MATERIAL

DRAWING NUMBER	FP21196	5
REFRIGERANT	R410A	5
2LP8_CARTRIT_FLUID 09.10.2017	EPLAN Fluid 2.9.4	5