

RITTAL GmbH & Co. KG

AUF DEM STÜTZELBERG
D-35745 Herborn

<http://www.rittal.de>



MODEL : SK3336.480

DRAWING NUMBER : FP21198 -

PRODUCT FAMILY : KRAE 0400

VARIANT/SPECIAL : V000

REFRIGERANT : R410A

VOLTAGE : 400V 3 50Hz / 460V 3 60Hz [TT]

CUSTOMER :

REFERENCE :

CREATED THE : 29/10/2021 BY GF1

CHANGED ON THE : BY NUMBER OF PAGES : 6



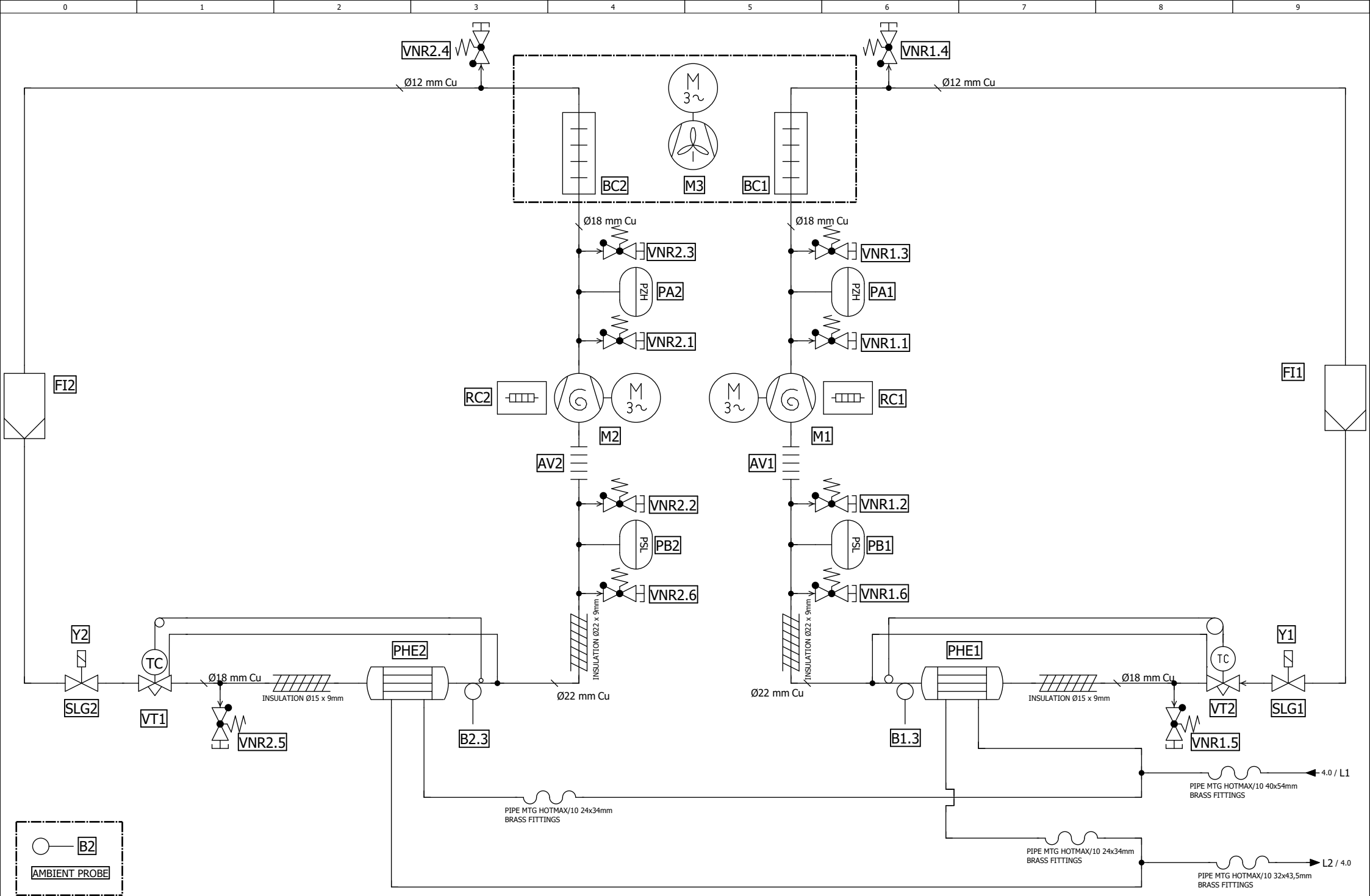
RITTAL
GmbH & Co. KG

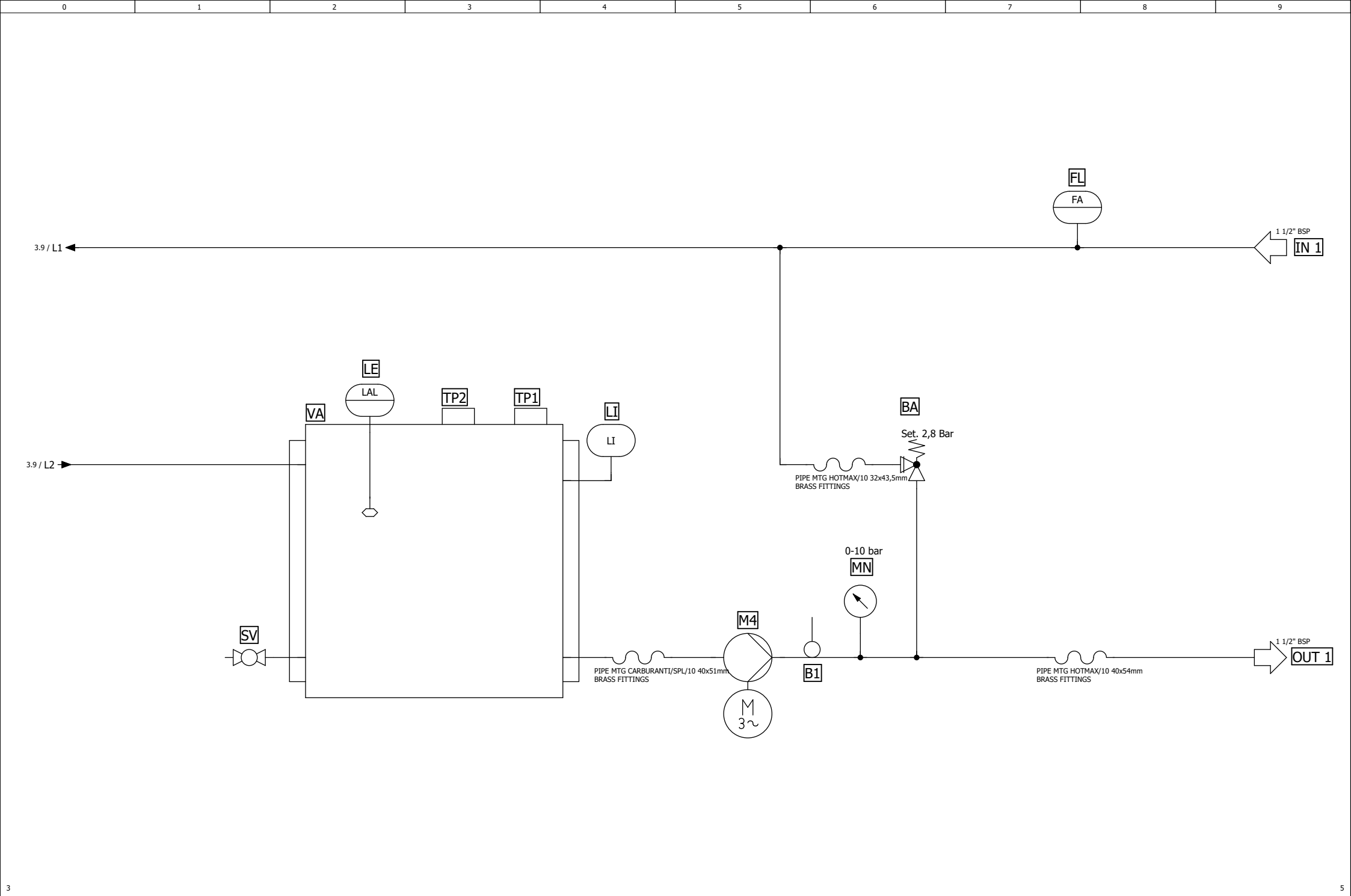
SK3336.480
KRAE 0400 V000
COVER

PAGE OVERVIEW

ZLP8_PAGKEL

PAGE	DESIGNATION	DATE REVISION	REVISOR
1	COVER		
2	PAGE OVERVIEW		
3	REFRIGERANT CIRCUIT		
4	HYDRAULIC CIRCUIT		
5	BILL OF MATERIAL		
6	BILL OF MATERIAL		





BILL OF MATERIAL



2LP8_RICKEL_FLUID

DESIGNATION	AMOUNT	ARTICLE NUMBER	DESIGNATION 1	DESIGNATION 2	MANUFACTURER	INTERNAL NO	PAGE / PATH
AV1	1	VAS22	REFTUBE ANTIV 22mm STSTEEL PN35		VERCO	900450	3.5
AV2	1	VAS22	REFTUBE ANTIV 22mm STSTEEL PN35		VERCO	900450	3.4
BA	1	90° 1"1/4 BRONZO	DISCHARGE VALVE 90° 1"1/4 BRONZE	2-6bar CAPPUCCIO PROTEZIONE	ACQUATICA SRL	923645	4.6
BC1	1	MCHE D1700-C	SCAMB MICRO MCHE D1700-C 25.4X1.3X26 DF0091	PEDI M/8 DANFOSS MCHE CONDENSER 021U0085	DANFOSS	927755	3.5
BC2	1	MCHE D1700-C	SCAMB MICRO MCHE D1700-C 25.4X1.3X26 DF0091	PEDI M/8 DANFOSS MCHE CONDENSER 021U0085	DANFOSS	927755	3.4
FI1	1	023Z4571	FILTER DEIDR DANFOSS DML084	SALD 12mm R410A, R407C, R134a, R404A	DANFOSS	916264	3.9
FI2	1	023Z4571	FILTER DEIDR DANFOSS DML084	SALD 12mm R410A, R407C, R134a, R404A	DANFOSS	916264	3.0
FL	1	POR00325	FLOWSWITCH SIKA VHS40M 1"1/2	25,5-32,5 l/min OTTONE PALETTA	SIKA SYSTEMTECHNIK	902041	4.7
LE	1	EURP006F7001/0	ELECTRIC LEVEL EUROSWITCH P006 2 LEV.	BLU-1° LIV MARR-2°LIV NERO-3°COMUNE	EUROSWITCH	918289	4.2
LI	1	HCX.127-INOX-BP	SIGHT LEVEL ELESA HCX.127-STAINST-BP		ELESA SPA	902344	4.4
M1	1	HCJ090T4LC6	COMP SCROLL DANFOSS HCJ090T4LC6	400 3 50,460 3 60 86.9cm3 R410A cURu	DANFOSS	916127	3.5
M2	1	HCJ090T4LC6	COMP SCROLL DANFOSS HCJ090T4LC6	400 3 50,460 3 60 86.9cm3 R410A cURu	DANFOSS	916127	3.4
M3	1	A4D630AI0101 106FG0476 106FB1309	KIT ASSEMBLATO EBM A4D630AI0101 106FG047	106FB1309 400 3 50 - 460 3 60	EBMPAPST SRL	927756	3.5
M4	1	CIE2106/5/D-V	PUMP LOWARA CIE2106/5/D-V	400 3 50, 460 3 60 SIC-SIC-FPM	LOWARA SRL	925751	4.5
MN	1	FMTPG351014LF	MANOMETER DIPPED GLICERINE FIMET 0-10bar	D.63 1/4" PG351014LF	FIMET	900442	4.6
PA1	1	061F7515	PRESSHP PSAH FIX 42	DANFOSS ACB-2UB151W cURus	DANFOSS	916189	3.6
PA2	1	061F7515	PRESSHP PSAH FIX 42	DANFOSS ACB-2UB151W cURus	DANFOSS	916189	3.4
PB1	1	061F7418	PRESSOSTATO BASSA LP FIX 2,2 - 3,4	DANFOSS ACB-2UA996W cURus	DANFOSS	916190	3.6
PB2	1	061F7418	PRESSOSTATO BASSA LP FIX 2,2 - 3,4	DANFOSS ACB-2UA996W cURus	DANFOSS	916190	3.4
PHE1	1	GBS240H-42	HEX PLATE GEA GBS240H-42	1x18 1x22 SALD 2x1" UL 2,94	GEA ECOBRAZE AB	916265	3.7
PHE1	1	J002285	ISOLANTE ADESIVO GBS240x42 KIT 3 PZ	1060x113x10 - 464x91x10 - 375x111x10	TONUCCI	927382	3.7
PHE2	1	GBS240H-42	HEX PLATE GEA GBS240H-42	1x18 1x22 SALD 2x1" UL 2,94	GEA ECOBRAZE AB	916265	3.2
PHE2	1	J002285	ISOLANTE ADESIVO GBS240x42 KIT 3 PZ	1060x113x10 - 464x91x10 - 375x111x10	TONUCCI	927382	3.2
RC1	1	120Z5012	CRANHEAT BAND DANFOSS 120Z5012	70W 460V	DANFOSS	916381	3.6
RC2	1	120Z5012	CRANHEAT BAND DANFOSS 120Z5012	70W 460V	DANFOSS	916381	3.3
SLG1	1	1078N/M12S	VALV REF SOL CASTEL 1078N/M12S	12mm , UL, WITHOUT COIL	CASTEL SR	927729	3.9
SLG2	1	1078N/M12S	VALV REF SOL CASTEL 1078N/M12S	12mm , UL, WITHOUT COIL	CASTEL SR	927729	3.0
SV	1	122600102	BALL VALVE 2VIE MINI Mx F 1/2" BRASSCr	PN10 LEVER HANDLE LOMB 122600102	LOMBARDA RACCORDI SRL	902688	4.1

4

6

CREATED BY	GF1	ON THE	29/10/2021
REVISOR		ON THE	LAST REVISION



RITTAL
GmbH & Co. KG

SK3336.480
KRAE 0400 V000
BILL OF MATERIAL

DRAWING NUMBER	FP21198	5
REFRIGERANT	R410A	6
2LP8_CARTRIT_FLUID 09.10.2017	EPLAN Fluid 2022.0.3	

