



KE
5051.437



4069196008913

Repair and maintenance work on this enclosures may only be carried out by authorised and appropriately trained specialist personnel.

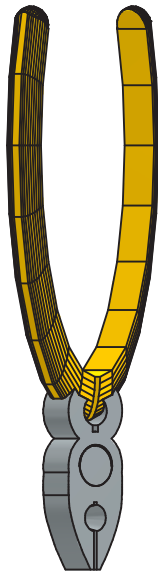
Maintenance and servicing must be carried out in accordance with EN IEC 60079-17 and EN IEC 80079-34



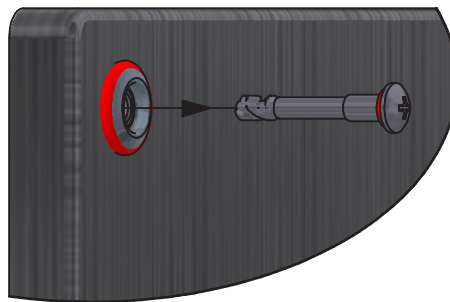
Demontage Verschluss

Removing lock

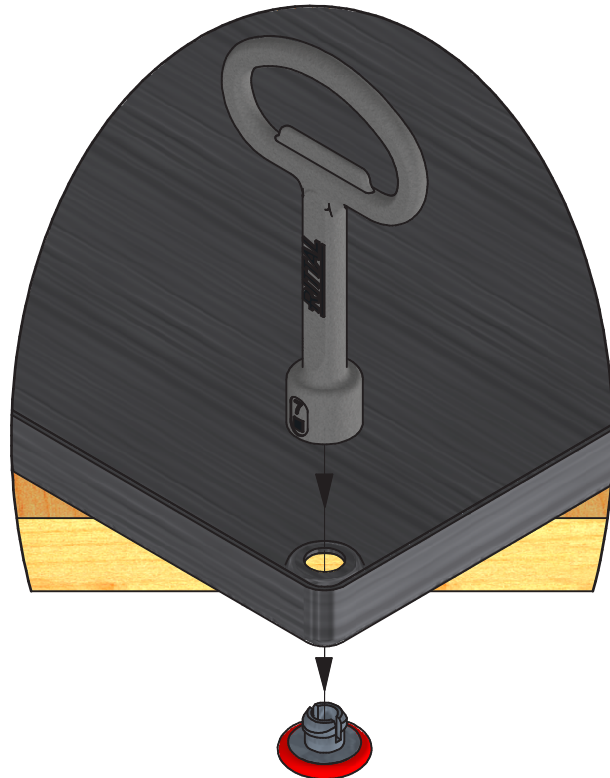
1.



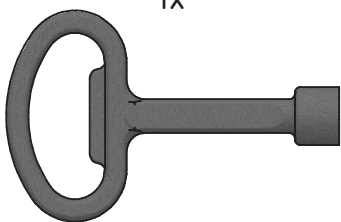
2.



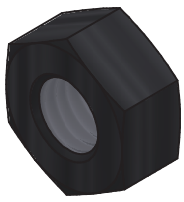
3.



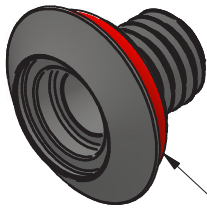
1x



4x

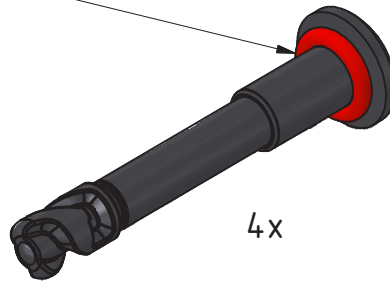


4x



11x2

5x1,5



4x

4x



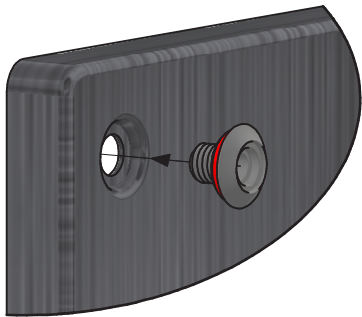
Montage Verschluss

Mounting of the lock

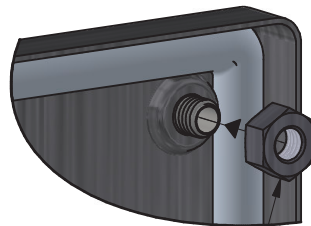
SW 13



1.

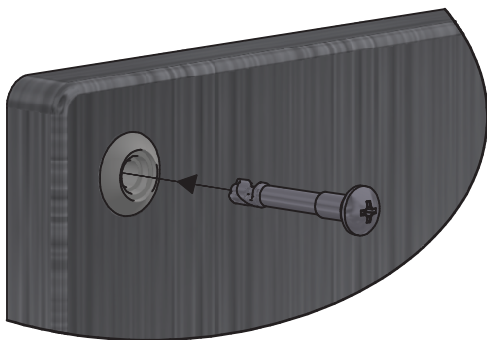


2.

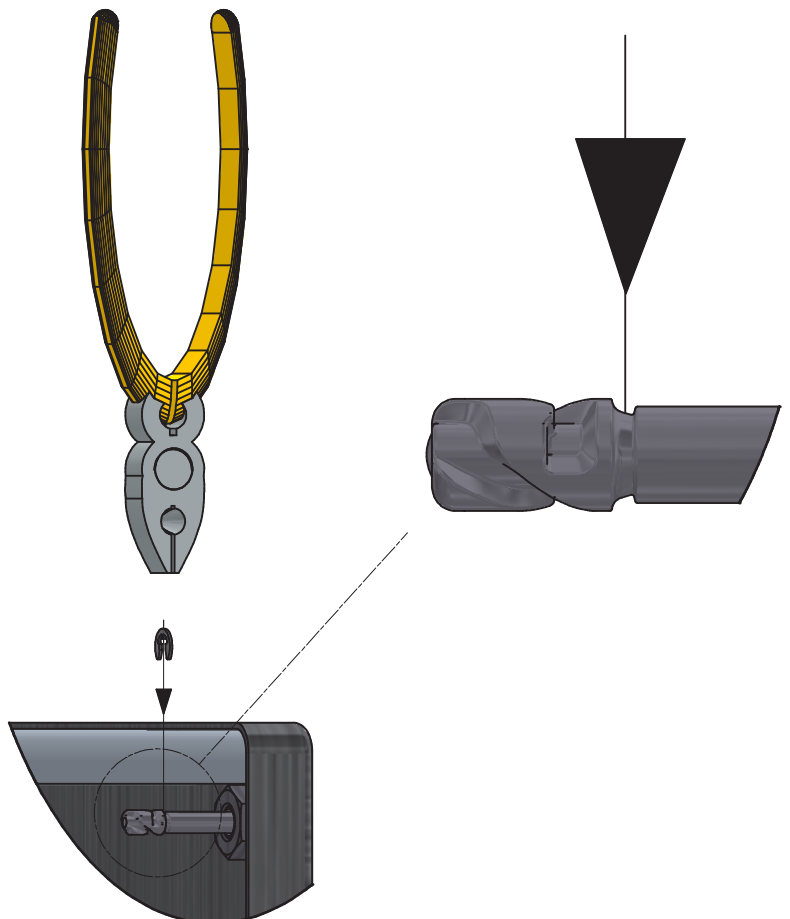


*M_A = 1,5 ± 0,5 Nm

3.



4.



*Geeigneten Klebstoff als Schraubensicherung bei dynamischen Anwendungen verwenden
*Use suitable glue as screw retention for dynamic use cases