

Rittal – The System.

Faster – better – worldwide.



▶ RittalXpress TS IT Enclosure Assemble-to-Order Program



ENCLOSURES

POWER DISTRIBUTION

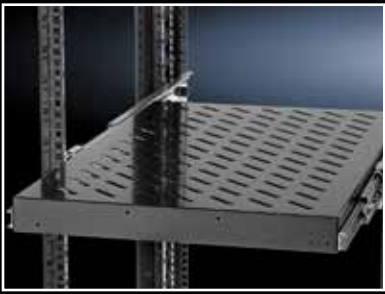
CLIMATE CONTROL

IT INFRASTRUCTURE

SOFTWARE & SERVICES

FRIEDHELM LOH GROUP





DESIGN YOUR DATA CENTER BY THE NUMBERS.

Count down to success: 4, 3, 2, 1...

Complete four easy steps, your order can be shipped in three days and you'll have one completely configured Rittal enclosure that's ready to go!

Rittal, as part of its RittalXpress program, has created a 3-day Assemble-to-Order program to make it easy for you to configure your new enclosures, place an order and have everything you need assembled and shipped within three days.

ASK YOURSELF THESE EASY QUESTIONS.

- 1 What size enclosures do you need? How tall? How wide? How deep?
- 2 What style of doors are needed on the front and the rear?
- 3 What kind of roof will be needed? Will cable entry be required?
- 4 What kind air flow, cable and power management options are important? Will accessories need to be installed?

The answers to these questions will lead you right through the simple 4-step process to create your perfect IT enclosure. Rittal's assembly specialists are standing by and ready to build your custom creation and ship it in only three days. Getting the exact server enclosure you need couldn't be easier, or faster!

THE CONFIGURATION NUMBER IS THE KEY.

The enclosed checklist will help you create a unique code that describes exactly what enclosure options you've chosen in one easy-to-use configuration number. This number, in combination with your selected accessories, makes it easier than ever to quote and order your custom configuration.

HERE'S HOW IT WORKS...

Fill out the tables, your contact information and any special delivery requirements on the opposite side of this brochure, then contact Rittal by:

• **Email - rittalxpress@rittal.us**

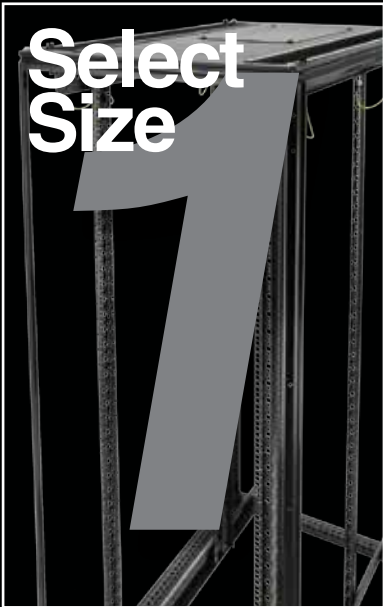
Scan your completed order form (these pages fold over to make this easy) then attach the files you create to your email using "RittalXpress TS IT ATO Quote Request" in the subject line.

• **Fax - (800) 477-4003**

This form can also be faxed, just transmit your order information (this brochure fits through a standard fax machine feeder).

We will have a member of our sales team contact you to confirm your unique configuration, answer any questions and follow up with a quote.

CIRCLE YOUR DESIRED OPTIONS, AS SHOWN IN THE EXAMPLE, TO CREATE YOUR OWN CUSTOM CONFIGURATION NUMBER.



SELECT SIZE

	Height		Width			Depth	
	42U	47U					
mm	2000	2200	600	700	800	1050	1200
EXAMPLE Inches	79	(87)	(24)	28	32	(41)	48
	79	87	24	28	32	41	48



SELECT DOORS

	Front Door			Rear Door		
	None	Full Perf	Split Perf	None	Full Perf	Split Perf
EXAMPLE	N	(F)	S	N	F	(S)
	N	F	S	N	F	S



SELECT ROOF & SIDEWALLS

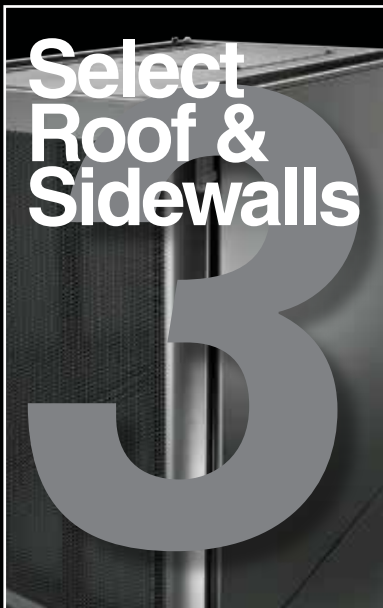
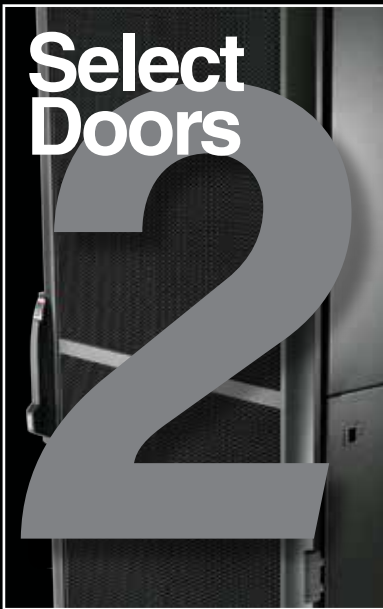
	Roof		Sidewalls			
	None	Slot	None	Split Left Only	Split Right Only	Split Both
EXAMPLE	N	(S)	N	2L	2R	(B)
	N	S	N	2L	2R	B



Configuration Number

EXAMPLE

872441-FSSB



Select Accessories & Installation

4

General Accessories

Part No.	Description	Packs of	Qty.	Loose <i>(circle one)</i>	Installed <i>(circle one)</i>
9967.480	Caster Kit, Front and Rear, Enclosure Width 24" (600mm)	1			x
9967.481	Caster Kit, Front and Rear, Enclosure Width 28" (700mm)	1			x
9967.482	Caster Kit, Front and Rear, Enclosure Width 32" (800mm)	1			x
9971.043	80x41" (2000x1050mm) Partition Wall - Cable Access	1			x
9971.044	80x48" (2000x1200mm) Partition Wall - Cable Access	1			x
9971.047	88x41" (2200x1050mm) Partition Wall - Cable Access	1			x
9971.048	88x48" (2200x1200mm) Partition Wall - Cable Access	1			x
9978.379	80x41" (2000x1050mm) Solid Partition Wall	1			x
9978.380	80x48" (2000x1200mm) Solid Partition Wall	1			x
9978.383	88x41" (2200x1050mm) Solid Partition Wall	1			x
9978.384	88x48" (2200x1200mm) Solid Partition Wall	1			x
5501.615	Component Shelf, 2U, 10" (250mm) Deep	1		x	x
5501.625	Component Shelf, 2U, 16" (400mm) Deep	1		x	x
5501.705	Component Shelf, Depth Variable	1		x	x
5501.725	Component Shelf, Depth Variable, Pull-Out	1		x	x
7113.000	Grounding Rail, 18" (450mm)	1		x	x
9963.601	Combination Lock Handle	1			x
2468.000	Pushbutton Insert	1			x
2469.000	Pushbutton Lock Insert	1			x
2089.000	M6 Phillips Screws	100		x	
2092.200	M6 Captive Nuts	50		x	
8800.490	Baying Connector, External	6		x	
9961.504	Leveling Feet	4		x	x
4177.000	Vertical System Bars for 42U Rack	6		x	x
4178.000	Vertical System Bars for 47U Rack	6		x	x
4182.000	Mounting Brackets for Vertical System Bars	24		x	x
2486.500	Torx Screws M5.5x13	300		x	
4380.000	System Chassis, 75" (1895mm), for 42U Enclosure	4		x	x
4381.000	System Chassis, 82" (2095mm) for 47U Enclosure	4		x	x



Cable Management

Part No.	Description	Packs of	Qty.	Loose <i>(circle one)</i>	Installed <i>(circle one)</i>
5502.235	Cable Management Panel, 2U	1		x	x
9969.736	Horizontal Cable Management, 1U	2		x	x
9969.597	Horizontal Cable Management, 2U	2		x	x
5502.205	Cable Management Panel, 1U - Metal Rings	1		x	x
9969.599	Quarter-Turn Hook & Loop Manager	10		x	x
9969.600	Quarter-Turn Cable Collection Claw	10		x	x
9972.922	TS IT Quarter Turn D-Ring	10		x	x
9972.912	Cable Management Fingers, 20U for 42U	2		x	x
9972.913	Cable Management Fingers, 22U for 47U	2		x	x
5502.115	Cable Fingers, 6U	14		x	x
5502.105	TS IT Cable Duct, 42U for Enclosure Width 32" (800mm)	1		x	x
5502.145	TS IT Cable Duct, 47U for Enclosure Width 32" (800mm)	1		x	x
9972.927	TS IT Cable Duct, for Enclosure Width 28" (700mm)	1		x	x
5502.120	Cable Route Wall	1		x	x

Note: Installed options will be in a factory default position unless stated otherwise.

Select Accessories & Installation

4

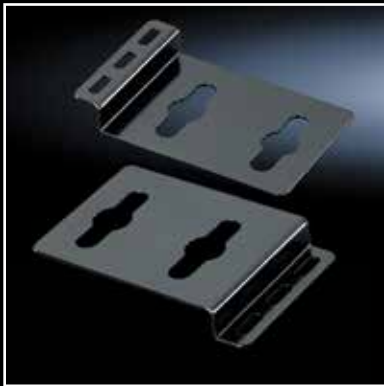
Air Flow Management

Part No.	Description	Packs of	Qty.	Loose (circle one)	Installed (circle one)
9960.676	Plastic Toolless Blanking Panel, 1U, Black	12		X	
9970.016	19" Blanking Panel, 1U, RAL 9005	10		X	X
9970.017	19" Blanking Panel, 3U, RAL 9005	5		X	X
5501.805	Air Baffle Plate, 42U (79"/2000mm) x 24" (600mm)	1		X	X
9972.925	Air Baffle Plate, 42U (79"/2000mm) x 28" (700mm)	1		X	X
5501.815	Air Baffle Plate, 42U (79"/2000mm) x 32" (800mm)	1		X	X
5501.825	Air Baffle Plate, 47U (87"/2200mm) x 24" (600mm)	1		X	X
9972.926	Air Baffle Plate, 47U (87"/2200mm) x 28" (700mm)	1		X	X
5501.835	Air Baffle Plate, 47U (87"/2200mm) x 32" (800mm)	1		X	X
5502.015	Fan mounting plate up to 3 fans for 600w, RAL9005	1		X	
5502.025	Fan mounting plate up to 6 fans for 800w, RAL 9005	1		X	

Power Options

Part No.	Description	Packs of	Qty.	Loose (circle one)	Installed (circle one)
PDU – 19" Rack Mount					
9970.844	12x5-20 Receptacles, 10' Cord, L5-30 Plug, 120V-30A	1		X	
9970.843	12x5-20 Receptacles, C20P, 20A, 1U ¹⁾	1		X	
PDU – Vertical Mount					
9970.847	24x5-20R, C20 Inlet, 0U ¹⁾	1		X	
9963.671	12x5-20 Receptacles, 10' Cord, L5-30 Plug, 0U	1		X	
9963.675	24x5-20 Receptacles, 10' Cord, L5-30 Plug, 0U	1		X	
9972.960	24xC13 6xC19 Recept., 10' Cord, L6-30 Plug, 0U, Metered	1		X	
9972.961	24xC13 6xC19 Receptacles, 10' Cord, L6-30 Plug, 0U, Smart	1		X	
9972.962	24xC13 6xC19 Receptacles, 10' Cord, L6-30 Plug, 0U, Metered Exp Unit	1		X	
9978.456	12xC13 12xC19 Receptacles, 3 Phase, 10' Cord, 5-Pin Pin/Sleeve Plug, 0U, Smart	1		X	
Power Cords					
9970.811	10' Power Cord, C19 to L6-20P	1		X	
9970.812	10' Power Cord, C19 to L5-20P	1		X	
9970.813	10' Power Cord, C19 to 5-20P	1		X	
9970.814	10' Power Cord, C19 to 5-15P	1		X	
Mounting Options					
9963.800	Dual Recessed Button Mount Bracket	2		X	
9978.522	TS IT Button Mount Bracket	2		X	
9971.067	Dual PDU Button Mount Bracket	2		X	

¹⁾Power Cord Required



INFORMATION

Company _____

Name _____

Address _____

City, State, Zip _____

Phone _____ Fax _____ Email _____

SPECIAL DELIVERY REQUIREMENTS*

- Inside Delivery Lift-Gate Delivery No Special Requirements
 Other* _____

*Additional charges may apply

Completed order forms may be scanned and emailed to rittalxpress@rittal.us or faxed to (800) 477-4003.

Note: Installed options will be in a factory default position unless stated otherwise.

Rittal – The System.

Faster – better – worldwide.

- Enclosures
- Power Distribution
- Climate Control
- IT Infrastructure
- Software & Services

The Rittal Corporation is the U.S. subsidiary of Rittal GmbH & Co. KG and manufactures the world's leading industrial and IT enclosures, racks and accessories, including climate control and power management systems for industrial, data center, outdoor and hybrid applications. For more information about Rittal and its products, please visit www.rittal.us or call 1-800-477-4000.

Rittal Corporation

1 Rittal Place • Urbana Ohio 43078 • USA
Woodfield Corporate Center • 425 North Martingale Road, Suite 400 • Schaumburg Illinois 60173 • USA
Phone: 937-399-0500 • Fax: 800-477-4003 • Toll-free: 800-477-4000
Email: rittal@rittal.us • Online: www.rittal.us

ENCLOSURES

POWER DISTRIBUTION

CLIMATE CONTROL

IT INFRASTRUCTURE

SOFTWARE & SERVICES



FRIEDHELM LOH GROUP