

Press release

Rittal Limited



October 2013

Rittal Flex-block plinth has double appeal

Successfully introduced in 2012 in the 100 mm high version, Rittal's flex-block plinth is now available in a 200 mm high version, ex stock. Completing the series of sizes for the entire range of Rittal floor standing enclosures, the innovative design of the flex-block plinth provides simple but effective features providing time saving benefits.

Rittal's flex block plinth is bayable, provides reduced labour times by quick and easy assembly without tools; acts as a pallet preventing the need to double handle; enables the option for cable management/restrain within the base, freeing up space within the enclosure; strong with loads up to 15,000 N and a vented option is available, along with filters.

Try the change, see the benefits and improve assembly times. Visit http://www.rittal.com/de_de/flex-block/en for more details.

(133 words)

Media Relations Contact

John Wilkins

Marketing Services Manager

Tel: 01709 704000

e-mail: information@rittal.co.uk

Rittal Limited

Braithwell Way

Hellaby Industrial Estate

Hellaby

Rotherham S66 8QY

www.rittal.co.uk

Press release

Rittal Limited

Image

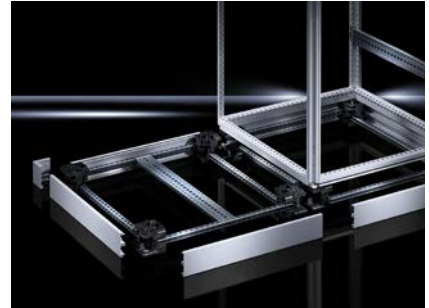
Rittal Flex-Block.jpg

Caption: Rittal Flex-Block Plinth System

Reproduction free of charge

Please specify "Rittal Limited" as source

Please send us a reference copy.



Note to Editor

Rittal Limited founded in the UK in 1979 and based in Hellaby, South Yorkshire is a subsidiary of Rittal GmbH & Co. KG. Rittal Limited supply enclosures, enclosure systems and accessories for the electrical, electronic and datacommunications industries throughout the UK. The Enclosure Systems have full compatibility and integration capability with Rittal's Power Distribution components and Thermal Management Systems.

Rittal has its headquarters in Herborn, Germany, and is one of the world's leading system suppliers for enclosures, power distribution, climate control, IT infrastructure and software & services. Customers from all sectors of industry, from mechanical engineering to the IT and telecoms market are making use of system solutions from Rittal.

Its broad product range also includes complete solutions for modular and energy-efficient data centres: from innovative security concepts for data systems through to physical data and system security for IT infrastructures (formerly known as Lampertz). The leading software provider Eplan and the software and consultancy company Mind8 supplement the Rittal product portfolio with interdisciplinary engineering solutions.

Founded in 1961, Rittal is now active worldwide with 10 production sites, 64 subsidiaries and 40 agencies. With 10,000 employees worldwide, Rittal is the largest company of the proprietor-run Friedhelm Loh Group based in Haiger, Germany. The entire group employs 11,500 people and generated revenues of about €2.2 billion in 2011. Further information at www.rittal.com and www.friedhelm-loh-group.com.