

Rittal – The System.

Faster – better – everywhere.

► The baying system PS 4000



ENCLOSURES

POWER DISTRIBUTION

CLIMATE CONTROL

IT INFRASTRUCTURE

SOFTWARE & SERVICES



FRIEDHELM LOH GROUP

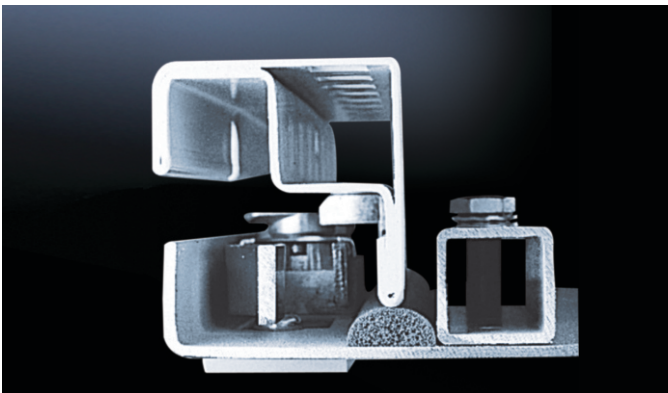
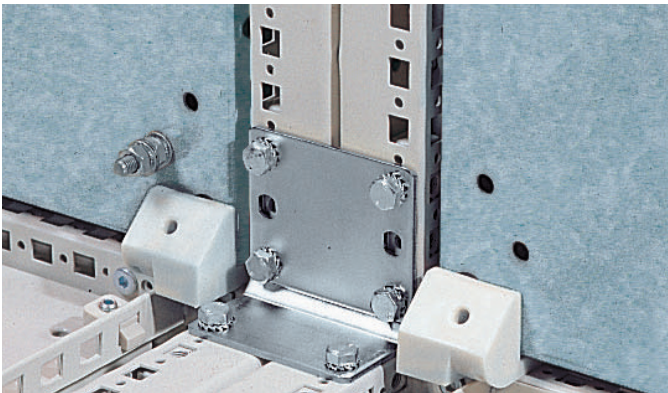
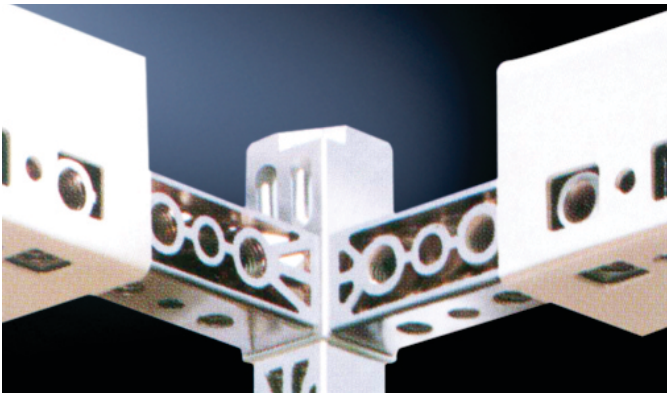
The baying system PS 4000

Design and technology customised to meet your needs

Top quality and economy characterise the PS system.

The profile is one of the core features of our successful concepts. It offers top quality combined with a maximum useful internal space, unlimited assembly due to 24 rows of holes in a 25 mm grid, no need for manual machining due to approx. 1000 square and 1000 round holes (for medium sized enclosures) as well as 144 tapped holes at corners where assembly work is mostly required.

Internationally acknowledged approvals, product certifications according to worldwide standards and comprehensive tests at our own test laboratories guarantee for top product quality - for you to be on the safe side.



Eight plug-in corner connectors and additional welding provide for strong connections.

18 tapped holes in each corner provide for direct attachment of the mounting plate, of swing frame, cable clamp rails or baying brackets.

The surface is well protected by nano-ceramic coating, dipcoat primed.

Section through the vertical profile (above image) and the door with the tubular door frame. Stability and high protection category are provided by the profile and the labyrinth system.

Maximum sizes of orifices and two rows of holes in all twelve profiles provide for free access from all sides for universal installation.

The baying system PS 4000

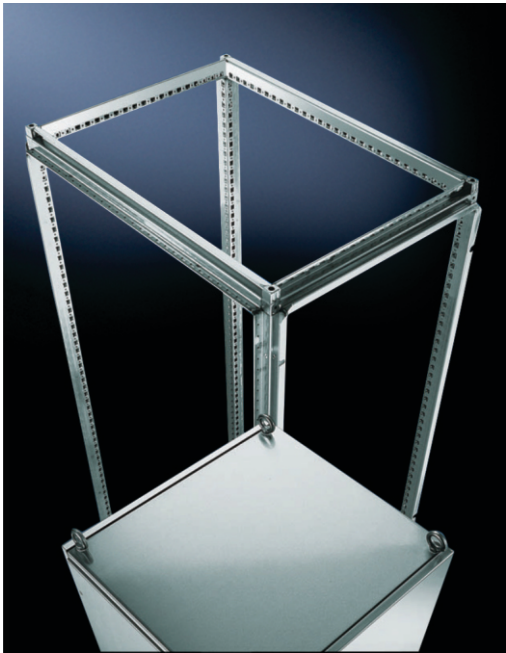
Identical
the roof and base frame

Quick assembly -
just locate and fix it

Diversity
is offered by groove and assembly
systems.

At any point within the room
an attachment point can be
implemented.

PS 4000
Technology which has your solution.



The baying system PS 4000



Material:

Sheet steel
Enclosure frame: 9-fold profile
Door: 2.0 mm
Rear panel: 1.5 mm
Mounting plate: 3.0 mm
Gland plate: 1.5 mm.

Surface finish:

Enclosure frame & bottom cover:
Dipcoat primed.
Door, roof and rear panel: dipcoat
primed, powder coated in textured
RAL 7035 on the outside
Mounting plate & Gland plate:
Galvanized sheet steel.

Supply includes:

Enclosure frame with door,
removable rear panel and roof
plate, 4 eyebolts fitted, mounting
plate, gland plates, depth stay
as shipping brace (r/h door hinge,
can be changed to opposite
side - single door
Lockable door on
right - double door).

Protection Category:

IP 55 to EN 60 529
Complies with NEMA 12.

Single Door

Article No. PS	Size in mm W x H x D
4684.500	600x1800x400
4685.500	600x1800x500
4604.500	600x2000x400
4605.500	600x2000x500
4606.500	600x2000x600
4608.500	600x2000x800
4626.500	600x2200x600
4884.500	800x1800x400
4885.500	800x1800x500
4886.500	800x1800x600
4888.500	800x1800x800
4804.500	800x2000x400
4805.500	800x2000x500
4806.500	800x2000x600
4808.500	800x2000x800
4826.500	800x2200x600
4084.500	1000x1800x400

Double Door

Article No. PS	Size in mm W x H x D
4005.500	1000x2000x500
4006.500	1000x2000x600
4008.500	1000x2000x800
4284.500	1200x1800x400
4285.500	1200x1800x500
4286.500	1200x1800x600
4204.500	1200x2000x400
4205.500	1200x2000x500
4206.500	1200x2000x600
4208.500	1200x2000x800
4226.500	1200x2200x600

Configuration details:

- 500 : Enclosure frame, front door, rear bolted cover, roof plate with eyebolts, bottom cover with standard gland plate and one mounting plate.
- 501 : Enclosure frame, front door, rear door, roof plate with eyebolts, bottom cover with standard gland plate and one mounting plate.
- 510 : Enclosure frame, front door, rear bolted cover, roof plate with eyebolts, bottom cover with standard gland plate.
- 511 : Enclosure frame, front door, rear door, roof plate with eyebolts, bottom cover with standard gland plate.
- 521 : Enclosure frame, front door, rear door, roof plate with eyebolts, bottom cover with standard gland plate and two mounting plates.

Note: Enclosure with IP 65 & Seismic panels - available on request

*Special size available on request

PS Selection

Example:-

4

8

0

8

5

0

0

PS 4000 Series

Width

Height

Depth

RAL 7035

No. of Mounting plates

Rear panel/door

Width

6 – 600 W

8 – 800 W

0 – 1000 W

2 – 1200 W

Height

8 – 1800 H

0 – 2000 H

2 – 2200 H

Depth

4 – 400 D

5 – 500 D

6 – 600 D

8 – 800 D

Mounting plate

0 – 1 mounting plate

1 – without mounting plate

2 – 2 mounting plates

Rear

0 – Rear panel

1 – Rear door

The baying system PS 4000

Accessories

Base / Plinth PS

For increased floor clearance or for cable entry available with a height of either 100 or 200 mm.

Material:

Sheet steel

Surface finish:

Color - RAL 7022 texture spray finished

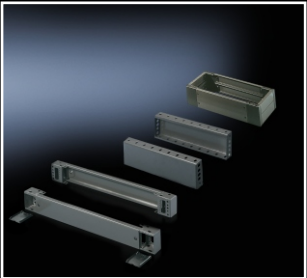
Cover caps- plastic (color RAL 9005)

Supply includes:

4 corner pieces, 4 cover caps and removable width & depth trim pre-configured assembly parts

For enclosures		Model No. SO	
Width (mm)	Depth (mm)	100 mm high	200 mm* high
600	400	2804.200	2805.200
600	500	2807.200	2808.200
600	600	2813.200	-
600	800	2846.200	-
800	400	2823.200	2824.200
800	500	2829.200	2830.200
800	600	2833.200	-
800	800	2848.200	-
1000	400	2909.200	2910.200
1000	500	2914.200	-
1000	600	2916.200	-
1200	400	2836.200	2837.200
1200	500	2839.200	2840.200
1200	600	2844.200	-
1200	800	2853.200	-
1000	800	9788.062	-

*Trim panels at the front and rear with fitted corner pieces and side trim panels without cover caps



Baying kit for PS :

The stable, secure standard connection, including fixing material.

Material:

Hexagon steel section, Zinc plated, passivated

Supply includes:

Assembly parts

Packs of	Model No. PS
6	4580.000



Angular baying bracket for PS :

For baying two enclosures or as an additional reinforcement to baying kit. PS 4580.000 or 4581.000

Material:

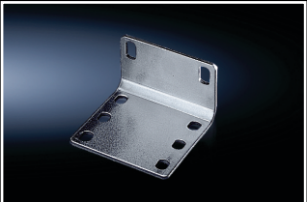
Sheet steel zinc plated, passivated

Supply includes:

Assembly parts

Note: Not suitable for use with a fitted divider panel

Packs of	Model No. PS
4	4582.000



Quick- fit baying clamp for PS :

For quick in situ assembly, also suitable for temporary use in the workshop.

Material:

Sheet steel zinc plated, passivated

Supply includes:

Assembly parts

Note: Not suitable for the transportation of bayed enclosure suites

Packs of	Model No. PS
6	4581.000



The baying system PS 4000

Accessories



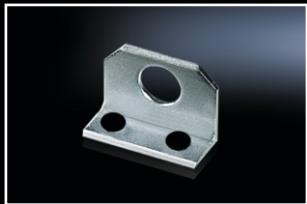
Baying bracket for PS :

Baying in situations where the rear panels and doors are not intended to be removed for baying or where divider panels and inner walls are already fitted.

Material:
Sheet steel zinc plated, passivated

Supply includes:
Assembly parts

Packs of	Model No. PS
6 pairs	4584.000



Combination angle

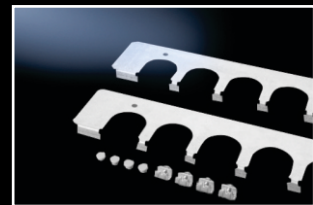
For optimum distribution of tensile forces during transportation of bayed enclosures by crane.

Material:
Sheet steel

Surface finish:
Zinc plated

Supply includes:
Assembly parts.

Packs of	Model No. TS
4	4540.000



Cable entry plates

For
cable entry grommets
connector grommets
instead of segments of the standard divided gland plates.

Material:
Steel section, Zinc plated, passivated

Supply includes:
Assembly parts

Enclosure width (mm)	Cutouts per plate	Packs of ¹⁾	Model No. PS
600	5	2	4320.700
800	8	2	4321.700
1000	10	2	4323.700
1200	6	4	4325.700

¹⁾compensating panel included



Cable entry grommets

In conjunction with the cable entry plate,
simple and fast sealing of cables inserted in the
base area of enclosures.

Material
Body : Polypropylene
Cover : Thermoplastic elastomer

Protection category
IP55 subject to correct mounting

Cables per grommet	max. Ø mm	Packs of	Model No. PS
8	13	25	4316.000
3	21	25	4317.000
1	47	25	4318.000

The baying system PS 4000

Accessories

Connector grommets

Suitable for cable diameters from 8 to 36 mm

Material:

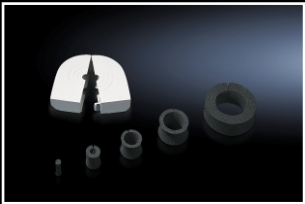
Outer cover: Polypropylene covered with thermoplastic elastomer

Seal: Cellular rubber

Protection category:

IP 55 subject to correct mounting.

Packs of	Model No. PS
10	4311.000



Cable clamp rails

Mounting angle for TS, PS, PC, TP

Universal Console, Base / Plinths

For strain relief with cable entry. Depth - variable mounting on a 25 mm pitch

Pattern on the horizontal enclosure section or inside base/ plinth trim panels with assembly bolts.

Material:

Steel

Surface finish:

Zinc plated

Supply includes:

Assembly parts

Enclosure width (mm)	Length (mm)	Packs of	Model No. PS
400	385	2	4193.000
600	585	2	4191.000
800	785	2	4192.000
1000	985	2	4336.000
1200	1185	2	4196.000



Cable clamps

for cable clamp rails

For fastening the cables to the cable clamp rails.

Material:

Sheet steel

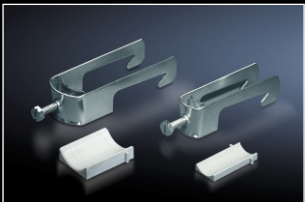
Surface finish:

Zinc-plated

Supply includes:

Plastic insert

For cable diameter mm	Packs of	Model No. SZ
6 – 12	25	2350.000
12 – 16	25	2351.000
14 – 18	25	2352.000
18 – 22	25	2353.000
22 – 26	25	2354.000
26 – 30	25	2355.000
30 – 34	25	2356.000
34 – 38	25	2357.000
38 – 42	25	2358.000
42 – 46	25	2359.000
46 – 50	25	2360.000



System support rails

For heavy installed equipment such as transformers.

T-head screw and slot in the support rail to accommodate all mounting dimensions.

Enclosure width (mm)	Packs of	Model No. PS
600	2	4361.000
800	2	4362.000
1000	2	4347.000
1200	2	4363.000

Note: fixing in the enclosure width only

Material:

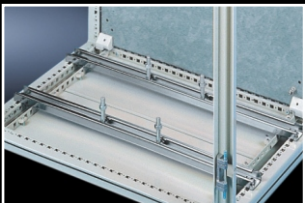
Sheet Steel

Surface finish:

Zinc Plated

Supply includes:

- 2 system support rails(45 x 25mm)
- 4 T - head screws M12 x 60 mm
- Assembly parts



The baying system PS 4000

Accessories



Side panels for PS, screw fastened

To finish off a complete enclosure unit.
Simply locate and secure with 6 screw fasteners

Material :

Sheet steel 1.5 mm

Surface Finish:

Dipcoat-primed, powder- coated
on the outside with RAL 7035 textured

Supply includes:

Assembly parts

For enclosures		Packs of	Model No. PS
Height (mm)	Depth (mm)		
1800	400	2	4184.235
1800	500	2	4185.235
1800	600	2	4186.235
1800	800	2	4188.235
2000	400	2	4104.235
2000	500	2	4105.235
2000	600	2	4106.235
2000	800	2	4108.235
2200	400	2	4124.235
2200	500	2	4125.235
2200	600	2	4126.235
2200	800	2	4128.235



Door rail for PS

For direct screw-fixing to the tubular
door frame

Material :

Sheet steel

Surface Finish:

Zinc plated

Supply includes:

Assembly screws

For door width (mm)	Model No. PS	Packs of
400	4594.000	20
500	4309.000	20
600	4596.000	20
800	4598.000	20
900	4579.000	20
1000	4599.000	20



Wiring plan pockets

of sheet steel

For TS, CM, PS PC, TP pedestal
For fastening to tubular door frames
at any height

Colour :

RAL 7035

Supply includes:

Assembly screws

D = 90mm

For door width (mm)	Clearance opening in mm		Model No. PS
	W	H	
400	255	210	4114.000
500	355	210	4115.000
600	455	210	4116.000
800	655	210	4118.000
900	755	210	4123.000
1000	855	210	4124.000



Wiring plan pockets plastic

Material:

Polystyrene with self-adhesive
fastening strips.

For affixing to the inside surfaces
of doors.

Article No. SZ	For Format
2513.000	A3 landscape
2514.000	A4 Portrait
2515.000	A5 landscape

The baying system PS 4000

Accessories

Ergoform-S lock system

The unlocked handle folds down forwards and the lock is opened by swiveling. Prepared for the installation of all 27 mm lock inserts, version A as well as SZ lock and push-button inserts.

Material :

Die-cast zinc

Surface Finish:

Powder-coated

Design	Model No. SZ
RAL 7032 with brown handle	2450.000
RAL 7035 with brown handle	2450.010
Brown	2451.000
Matt nickel-plated	2452.000
RAL 7032	2454.000
RAL 7035	2435.000
RAL 7032 ¹⁾ with brown handle and bracket	2455.000
RAL 7035 ¹⁾ with brown handle and bracket	2455.010

¹⁾ Hole diameter = 7 mm for padlock or multiple latch



Lock and push-button inserts

For installation in

- Comfort handle for semi-cylinders
- Ergo form - S standard
- Folding lever handle for CM

Version	Model No. SZ
Lock insert, lock no. 3524 E	2467.000
Push-button insert	2468.000
Lock and push-button insert, lock no. 2123; no other lock is possible	2469.000



Lock inserts

Version A, length 27 mm	Model No. PS
7 mm square	2460.000
8 mm square	2461.000
7 mm triangular	2462.000
8 mm triangular	2463.000
Screwdriver	2464.000
Daimler insert	2465.000
3 mm double-bit	2466.000
Fiat	2307.000
6.5 mm triangular (CNOMO)	2460.650



Mounting Plate infill

For a continuous mounting surface in bayed suites where the mounting plate is set forward.

Material :

Sheet steel, zinc plated, passivated.

Supply includes :

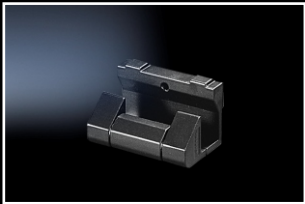
Assembly parts

Article No. TS/PS	For Encl Height
4590.700	1800
4591.700	2000
4592.700	2200



The baying system PS 4000

Accessories



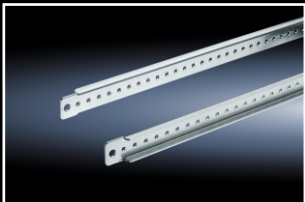
Hinges 180°

For retrospective conversion of standard doors with 130° hinges.
Including assembly parts.
For PS, universal console TP, TP pedestal

Material :
Aluminium

Surface finish :
Powder-coated in RAL 8019

Packs of	Model No.PS
6	4189.000



Horizontal support strips

Installation options:

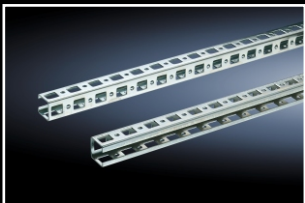
- On the PS system punching, in the enclosure depth
- On the tubular door frame PS, TS
- On the outer mounting level TS

Material :
Sheet steel

Surface Finish:
Zinc plated

Supply includes:
Assembly screws

For Enclosure Width/Depth mm	Length mm	Packs of	Model No.PS
400	340	20	4694.000
500	440	20	4695.000
600	540	20	4696.000
800	740	20	4697.000



PS punched rails 23 x 23 mm

Installation options :

- On the horizontal enclosure section
Directly via angle brackets PS 4181.000, mounting brackets PS 4182.000 or support brackets PS 4183.000 in conjunction with U nuts
- On the vertical enclosure section
 - Directly via support brackets TS
 - Via adaptor rail for PS compatibility in conjunction with angle brackets, mounting brackets or support brackets PS

Material :
Sheet steel

Surface Finish:
Zinc plated



Also required:

- U nuts
- Mounting brackets TS/PS or
- Angle brackets, support brackets TS/PS

Length mm	For WHD mm	Packs of	Model No.PS
295	400	12	4169.000
395	500	12	4170.000
495	600	12	4171.000
695	800	12	4172.000
895	1000	12	4173.000
1095	1200	6	4174.000
1295	1400	6	4393.000
1495	1600	6	4175.000
1695	1800	6	4176.000
1895	2000	6	4177.000
2095	2200	6	4178.000

The baying system PS 4000

Accessories

PS punched section without mounting flange, 23 x 73 mm

with 5 rows of holes for universal skeleton structures or partial assembly.

Installation options:

- On the vertical enclosure section
 - Directly via support brackets TS
 - Via adaptor rail for PS compatibility in conjunction with support brackets PS
- On the horizontal enclosure section
 - Directly via support brackets PS 4183.000

Material :

Sheet steel

Surface Finish:

Zinc plated



Also required:

Support brackets PS/TS

Length mm	For WHD mm	Packs of	Model No.PS
295	400	4	4374.000
395	500	4	4375.000
495	600	4	4376.000
695	800	4	4377.000
895	1000	4	4382.000
1095	1200	4	4378.000
1695	1800	4	4379.000
1895	2000	4	4380.000
2095	2200	4	4381.000

PS punched section with mounting flange 23 x 73 mm

Variable, with 5 rows of holes for universal skeleton structures or partial assembly. Simply locate into the system punchings and secure.

Installation options:

- On the vertical enclosure section
 - Via adaptor rail for PS compatibility
- On the horizontal TS enclosure section
- On the PS system punchings, in the enclosure depth*

Material :

Sheet steel

Surface Finish:

Zinc plated

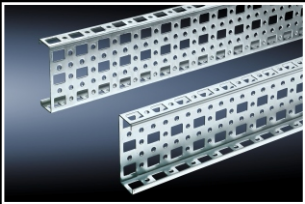
Supply includes:

Assembly screws

* Installation in enclosure depth PS,TP universal console, mm	Packs of	Model No.PS
400	4	4369.000
500	4	4370.000
600	4	4371.000
800	4	4372.000

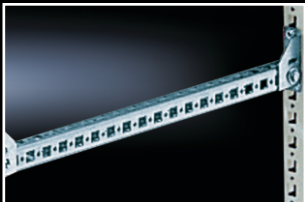
**Installation in enclosure width / depth TS mm	Packs of	Model No.PS
600	4	4364.000
800	4	4365.000
1000	4	4373.000
1200	4	4367.000

** installation in enclosure width for PS



The baying system PS 4000

Accessories



Angle bracket PS

For quick attachment of punched rails 23 x 23 mm.

Installation options:

- On the vertical TS enclosure section via
 - Adaptor rail for PS compatibility
- On the horizontal TS enclosure section
- On enclosures and rails with rectangular system punching 12.5 x 10.5 mm.

Material :

Sheet steel

Surface Finish:

Zinc plated

Supply includes (1 set) :

- 1 angle bracket, left
- 1 angle bracket, right
- 2 metal screws 5.5 x 13 mm



Also required :

- U nuts for punched rails
- Multi-tooth screws M6 x 12 mm, 2504.500

Packs of	Model No.PS
12 set	4181.000

Mounting bracket PS

For variable attachment of punched rail 23 x 23 mm.

Installation options:

- Optionally flush with :
 - Outer enclosure edge or
 - Enclosure clearance width
- On the vertical TS enclosure section via
 - Adaptor rail for PS compatibility,
- On the horizontal TS enclosure section
- On enclosures and rails with rectangular system punching 12.5 x 10.5 mm

Material :

Die-cast zinc

Supply includes (1 set) :

- 1 mounting bracket
- 1 screw M6 x 12 mm
- 1 cage nut M6



Also required :

- U nuts for punched rails (recommended: M6)
- Multi-tooth screws M6 x 12 mm, 2504.500

Packs of	Model No.PS
24 set	4182.000

The baying system PS 4000

Accessories

Support bracket PS

For the attachment of punched sections without mounting flange 23 x 73 mm or punched rails 23 x 23 mm.

Installation options:

- On the vertical TS enclosure section via
 - Snap-on nut TS 8800.806,
 - Adaptor rail for PS compatibility
- On the horizontal TS enclosure section
- On enclosures and rails with rectangular system punching 12.5 x 10.5 mm

Material :

Die-cast zinc

Supply includes (1 set) :

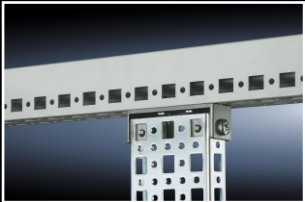
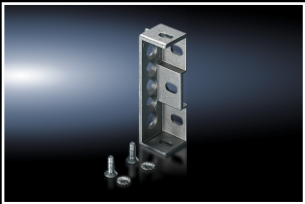
- 1 support bracket
- 2 countersunk screws
- 2 serrated lock washers



Also required :

- U nuts for punched rails (recommended: M6)
- Multi-tooth screws M6 x 12 mm
- Adaptor rail for PS compatibility (when mounting on the vertical enclosure section)

Packs of	Model No.PS
24 set	4183.000



Bracket/spacer

For fastening C rails, punched rails or cable clamp rails (angle section). On the sides, to accommodate square sections or tubes (Ø 20 mm). Attachment points with M8 thread.

Installation options :

- On the vertical TS enclosure section via
 - Snap-on nut TS 8800.808, or
 - Adaptor rail for PS compatibility
- On the horizontal TS enclosure section
- On enclosures and rails with rectangular system punching 12.5 x 10.5 mm

Material :

Die-cast zinc

Supply includes (1 set) :

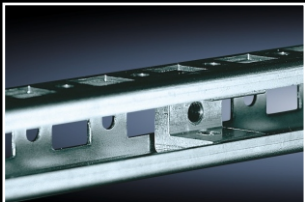
- 1 bracket/spacer
- 2 screws M8 x 16 mm
- 2 spring lock washers
- 2 cage nuts M8
- 2 serrated lock washers
- 2 Metal screws

Packs of	Model No.PS
6 set	4199.000



The baying system PS 4000

Accessories



U nuts

For

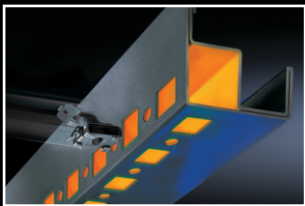
- Punched rail 23 x 23 mm
- Punched section without mounting flange, 23 x 73 mm
- Punched section without mounting flange, 45 x 88 mm
- Punched section with mounting flange, 23 x 73 mm

For mounting punched rails and punched sections without mounting flanges on angle brackets, mounting brackets and support brackets, we recommend U nuts with M6 thread (PS 4179.000)

+ Accessories:

Multi-tooth screws M6 x 12 mm,
(for PS 4179.000)

Thread	Packs of	Model No.TS
M4	20	4119.000
M5	20	4157.000
M6	20	4179.000
M8	20	4180.000



Captive nuts/threaded blocks

Installation options :

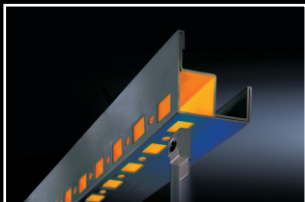
On enclosures and rails with rectangular system punching 12.5 x 10.5 mm, such as:

- TS enclosure section
 - vertically, via adaptor rail for PS compatibility
 - horizontally, direct
- PS enclosure body, all-round
- Punched rail 23 x 23 mm
- Punched section without mounting flange, 23 x 73 mm
- Punched section without mounting flange, 45 x 88 mm
- Punched section with mounting flange, 23 x 73 mm

Captive nuts

The compression spring, designed as an insertion aid, ensures reliable mechanical and electrical connection in the system punchings.

Thread	Packs of	Model No.TS
M5	50	4166.000
M6	50	4164.000
M8	50	4165.000



Threaded block

With snap-off insertion aid, die-cast zinc

Thread	Packs of	Model No.TS
M6	50	4162.000
M8	50	4163.000

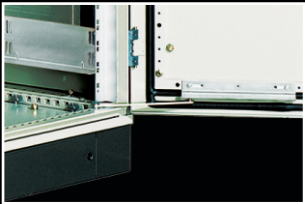
The baying system PS 4000

Accessories

Door stay

To secure door in open position.

Assembly	Packs of	Model No.
Bottom	5	4583.000



Ride-Up roller

Lifts the door with heavy installed equipment (e.g. cooling unit) as a closing aid. For attaching to the tubular door frame.

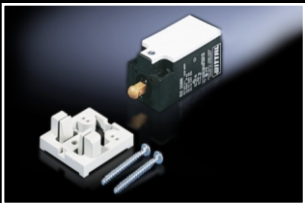
Packs of	Model No. TS
10	4538.000



Limit switch

Lifts the door with heavy installed equipment (e.g. cooling unit) as a closing aid. For attaching to the tubular door frame.

Article No.	Description
4127.010	Door-operated Switch with Support plate



Rittal – The System.

Faster – better – everywhere.

- Enclosures
- Power Distribution
- Climate Control
- IT Infrastructure
- Software & Services

Authorized Channel Partner.

RITTAL India Pvt. Ltd.
No. 23 & 24 • KIADB Industrial Area • Veerapura
Doddaballapur - 561 203 • Bengaluru District
Tel: +91(0)80 3372 0700 • Fax: +91(0)80 3372 0866
Email: info@rittal-india.com • Website: www.rittal-india.com

ENCLOSURES

POWER DISTRIBUTION

CLIMATE CONTROL

IT INFRASTRUCTURE

SOFTWARE & SERVICES

FRIEDHELM LOH GROUP

