

Rittal – The System.

Faster – better – worldwide.

► The new base/plinth system Flex-Block



ENCLOSURES

POWER DISTRIBUTION

CLIMATE CONTROL

IT INFRASTRUCTURE

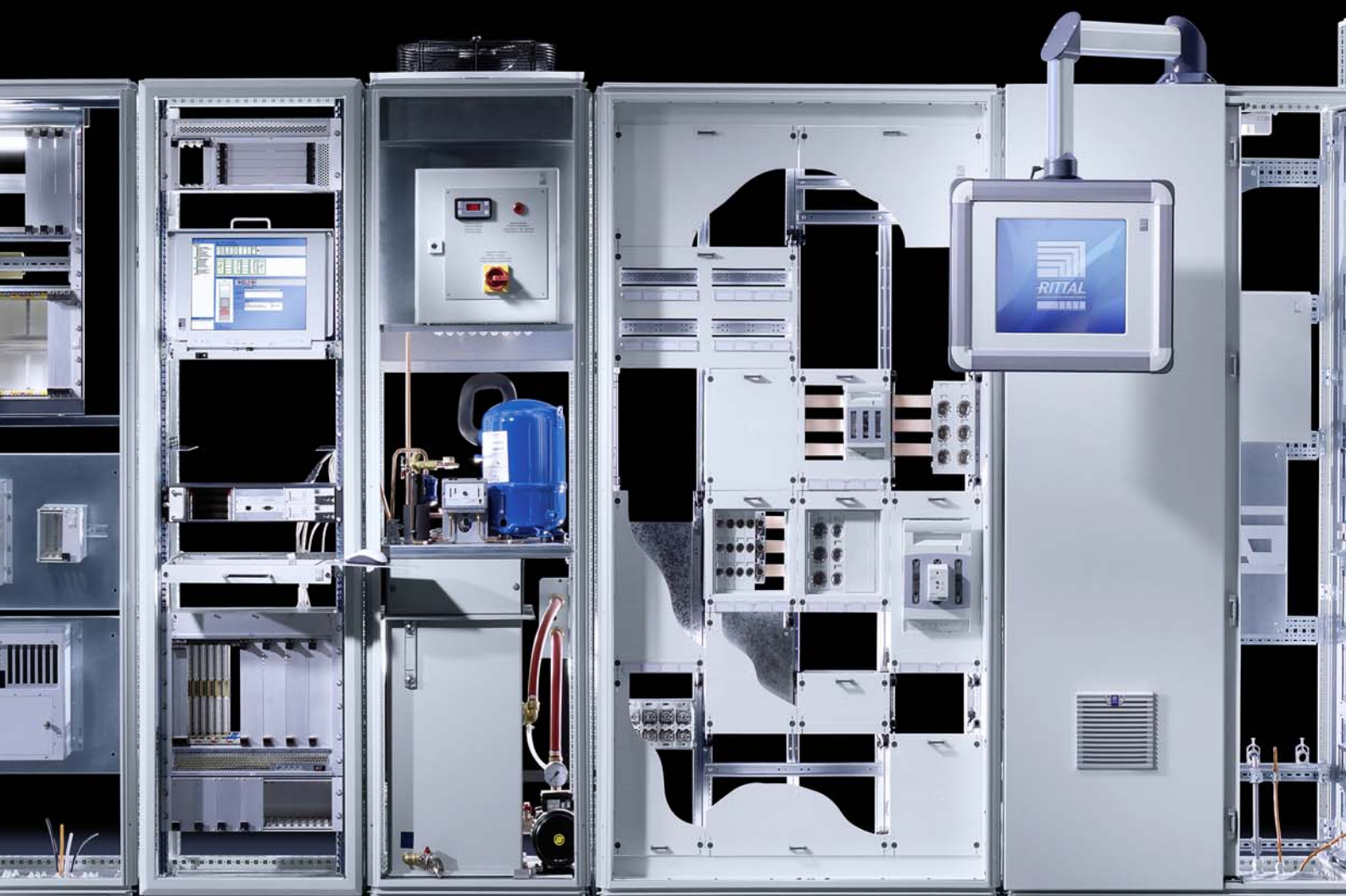
SOFTWARE & SERVICES

FRIEDHELM LOH GROUP



Rittal – The System.

Faster – better – worldwide.



ENCLOSURES

POWER DISTRIBUTION

CLIMATE CONTROL

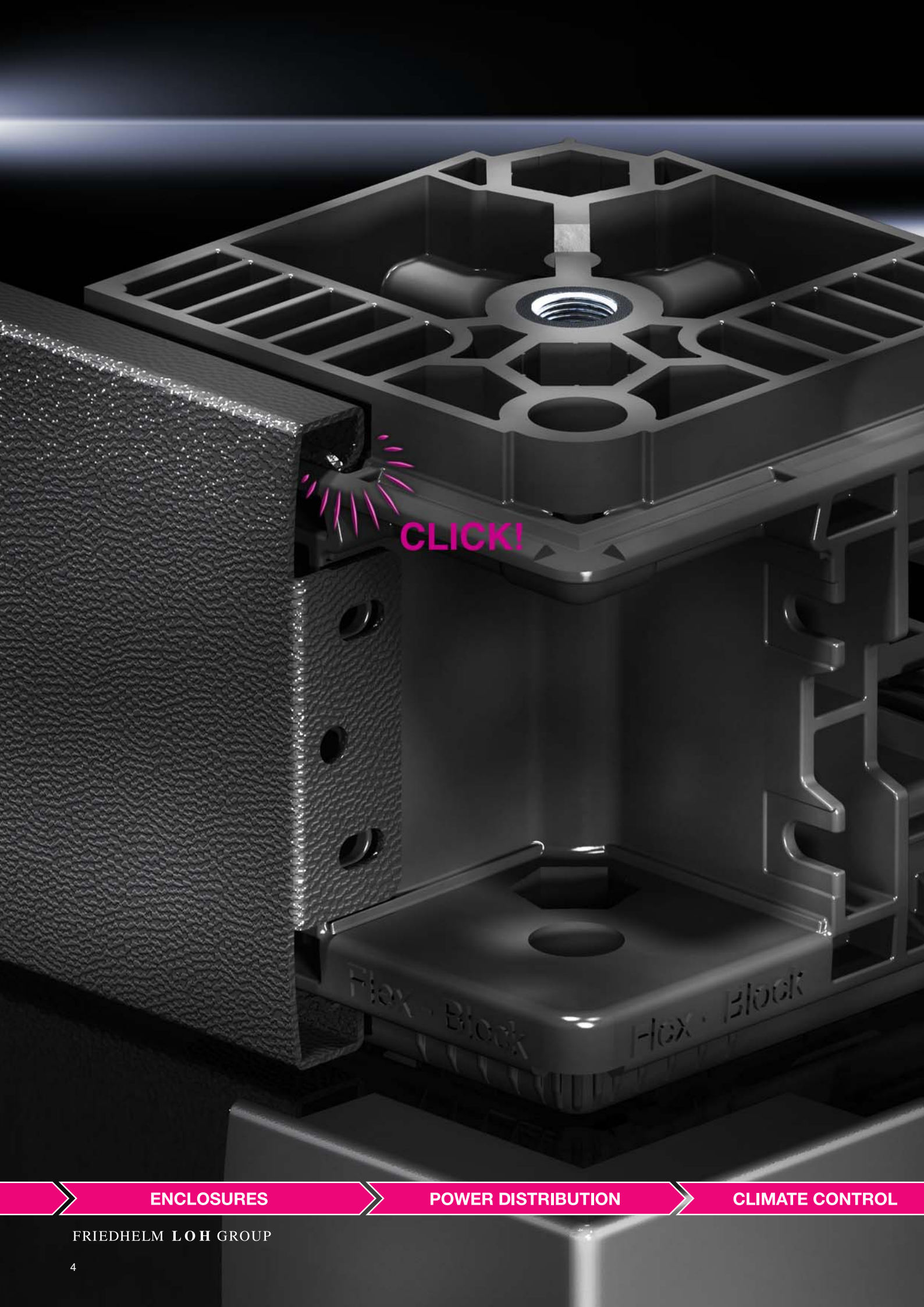
FRIEDHELM LOH GROUP

Systematic!

Everything we do centres around the benefits to you. With you in mind, we have developed a perfectly coordinated system platform that unites innovative products, pioneering engineering solutions and comprehensive service. This is complemented by a range of accessories that may be used throughout the entire system. Allow us to convince you with the new

Flex-Block base/plinth system:

- **Fast** – Speed up your enclosure construction with fast, tool-free assembly
- **Convenient** – Enhanced user-friendliness in terms of transportation and siting
- **Efficient** – Assembly and logistics processes designed for significant time and cost savings
- **Modular** – For enclosure systems TS 8, SE 8, TS IT, CM, PC and TP



CLICK!

Flex-Block

Flex-Block

ENCLOSURES

POWER DISTRIBUTION

CLIMATE CONTROL

FRIEDHELM LOH GROUP



Fast!

Tool-free assembly

- **Tool-free** – Base/plinth assembly in less than 30 seconds
- **Easy** – Simply clip the front and side trim panels into position
- **Convenient** – Baying by hand with clip attachment
- **Anti-twist** – Simple positioning on the enclosure with a positioning aid
- **Fast** – Clip the punched rails into place for cable routing

IT INFRASTRUCTURE

SOFTWARE & SERVICES





ENCLOSURES

POWER DISTRIBUTION

CLIMATE CONTROL

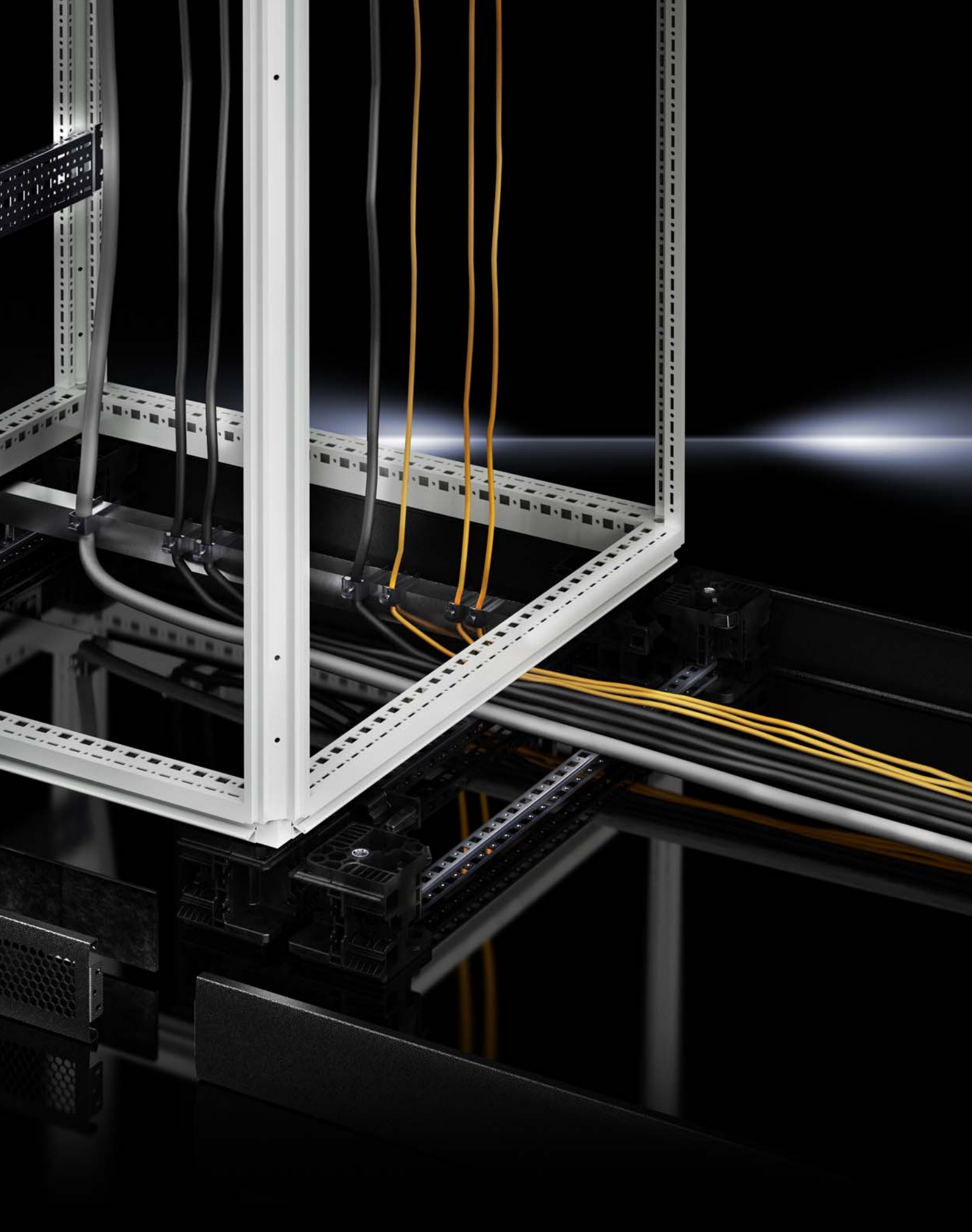
FRIEDHELM LOH GROUP



Mobile!

Simple transportation from A to B, even without a pallet

- **Suitable** – For forklifts and lifting trucks. Simply remove trim panels on opposite sides and position beneath the enclosure frame
- **Practical** – This reduces clearance heights by the height of the pallet
- **Faultless** – Trim panels are not fitted until the enclosure arrives at its final installation site, thus avoiding the risk of scratches and other visual defects

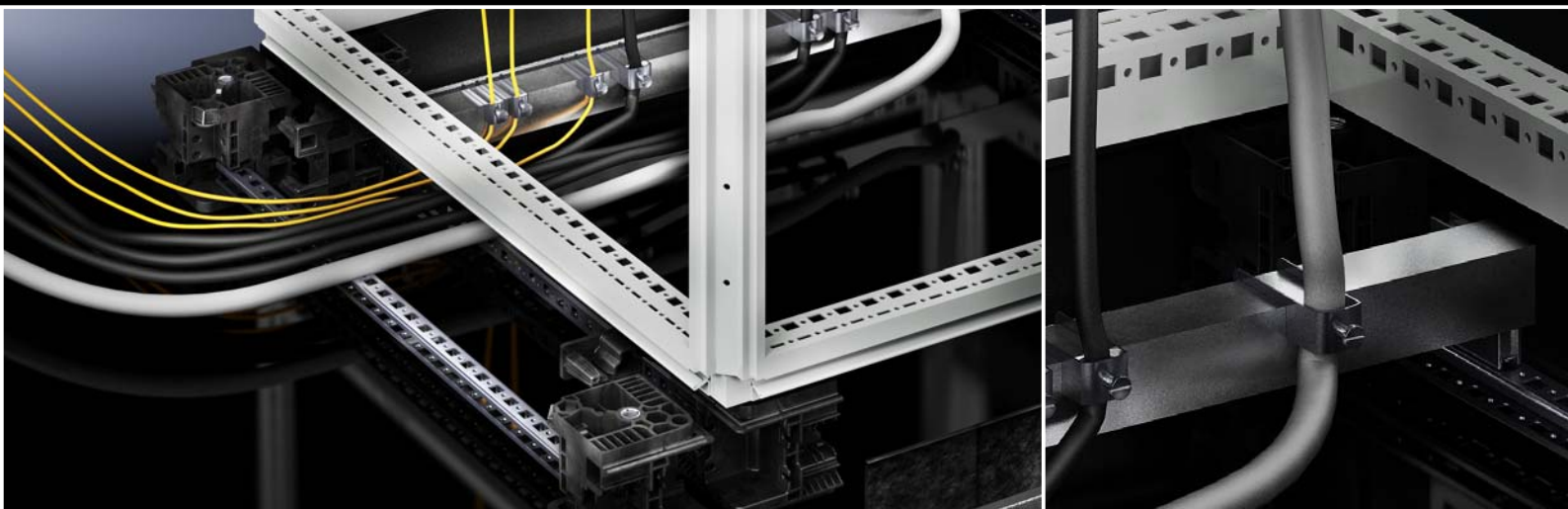


ENCLOSURES

POWER DISTRIBUTION

CLIMATE CONTROL

FRIEDHELM LOH GROUP



Exceptional!

Everything neat and tidy

- **Individual** – Trim panels are removable on all sides for cable entry
- **Tool-free** – Punched rails for cable clamp rails are fitted without the need for tools
- **Systematic** – With bayed base/plinths, individual panels may be fitted with cable clamp rails, all using system accessories; no machining required



ENCLOSURES

POWER DISTRIBUTION

CLIMATE CONTROL

FRIEDHELM LOH GROUP



Extendible!

Grows along with your requirements

- **Simple** – The Flex-Block may be raised to 200 mm by stacking
- **Independent** – The base/plinth may be mounted retrospectively at the installation site
- **Flexible** – Corner pieces and trim panels may be ordered separately
- **Space-saving** – Minimal storage space requirements
- **Uniform** – The trim panels have identical dimensions in the width and depth
- **Optional** – If preferred, the trim panels can also be omitted completely

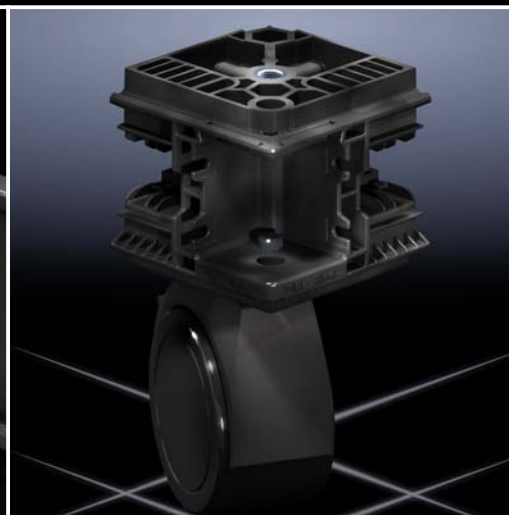
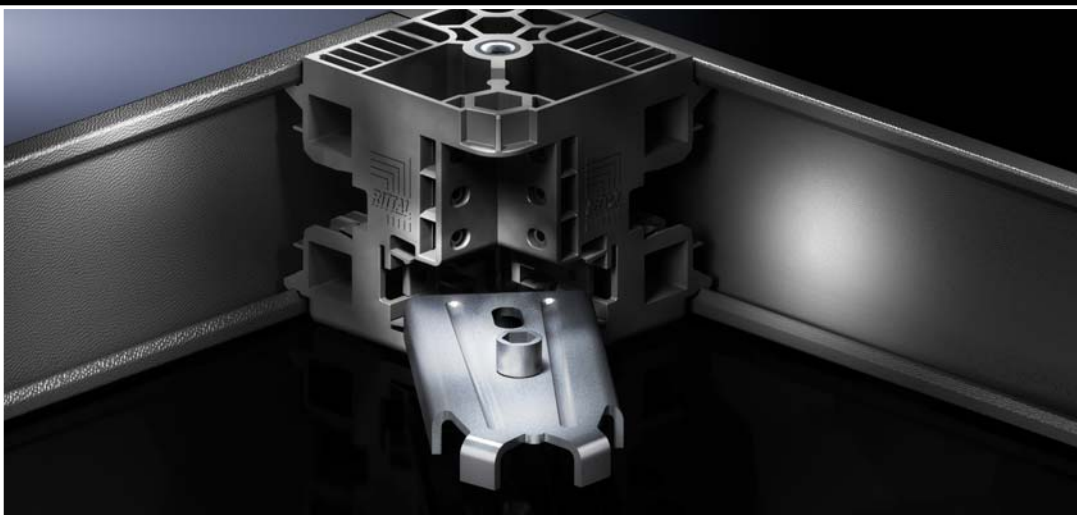


ENCLOSURES

POWER DISTRIBUTION

CLIMATE CONTROL

FRIEDHELM LOH GROUP



Strong!

No load too heavy

- **Secure** – Thanks to the large contact surface between the Flex-Block corner piece, the floor and the enclosure (trim panels may be clipped into position afterwards)
- **Load capacity** – High load capacity of up to 15,000 N
- **Resilient** – With high-quality materials



ENCLOSURES

POWER DISTRIBUTION

CLIMATE CONTROL

FRIEDHELM LOH GROUP

64 international subsidiaries

Global!

The right solution, worldwide

- **Industry-specific** – Competent, global expertise
- **Uniform** – Worldwide standards, compatibility and availability
- **International** – Approvals
- **Outstanding** – Complete logistics
- **Service** – On site, with 5 global support points, more than 250 service partners and over 1,000 service engineers

IT INFRASTRUCTURE

SOFTWARE & SERVICES



Rittal – The System.

Faster – better – worldwide.

- Enclosures
- Power Distribution
- Climate Control
- IT Infrastructure
- Software & Services

RITTAL GmbH & Co. KG
Postfach 1662 · D-35726 Herborn
Phone +49(0)2772 505-0 · Fax +49(0)2772 505-2319
E-mail: info@rittal.de · www.rittal.com

ENCLOSURES

POWER DISTRIBUTION

CLIMATE CONTROL

IT INFRASTRUCTURE

SOFTWARE & SERVICES

FRIEDHELM LOH GROUP

