

Firmware Upgrade Procedure for the Server Technology Switched CDU

Setup Overview (Switched CDU firmware revision 5.3 to 6.0g)


STEPS:

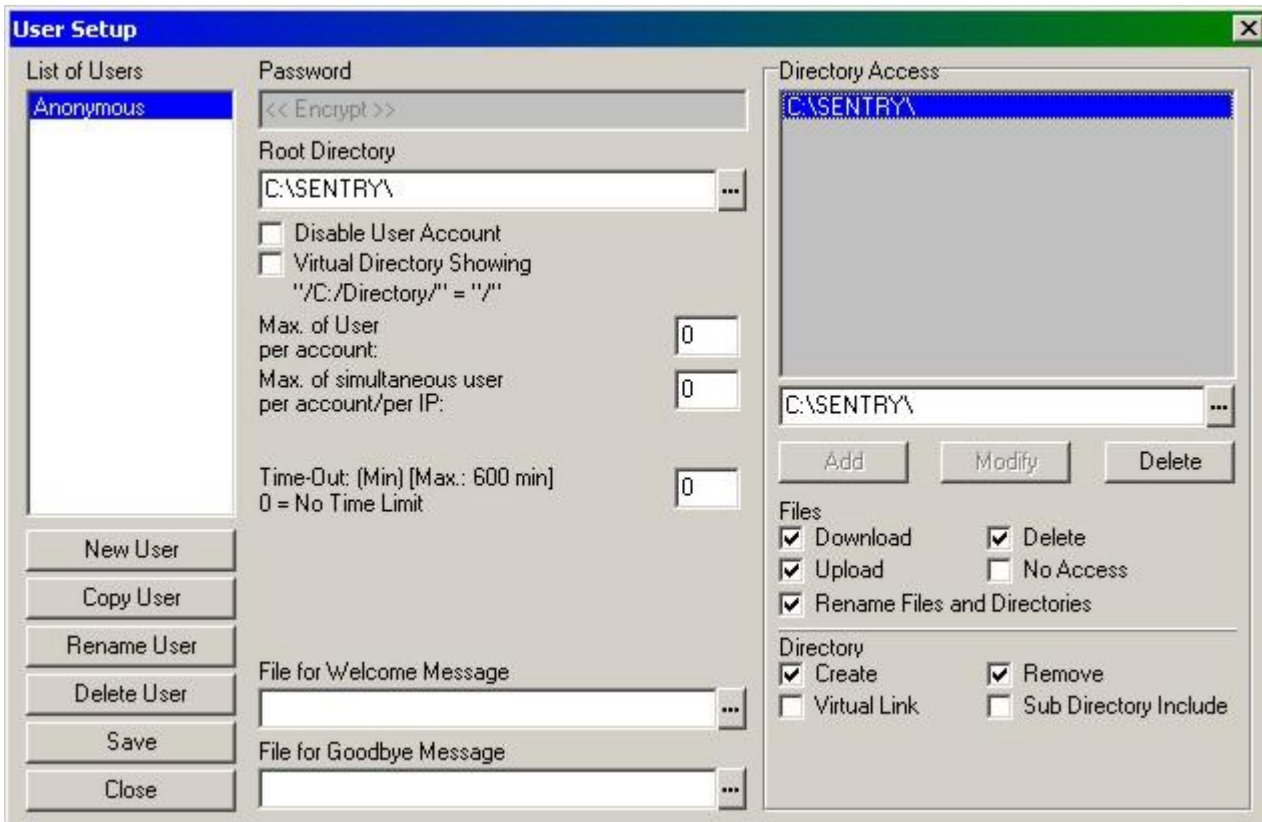
1. Load updated firmware 6.0 onto FTP Server
2. Setup the FTP Server to communicate with the CDUs
3. Configure the CDU to point to the FTP Server
4. Update the CDU firmware

NOTE: Actual update of the CDU firmware may take up to as long as 6 minutes per CDU.

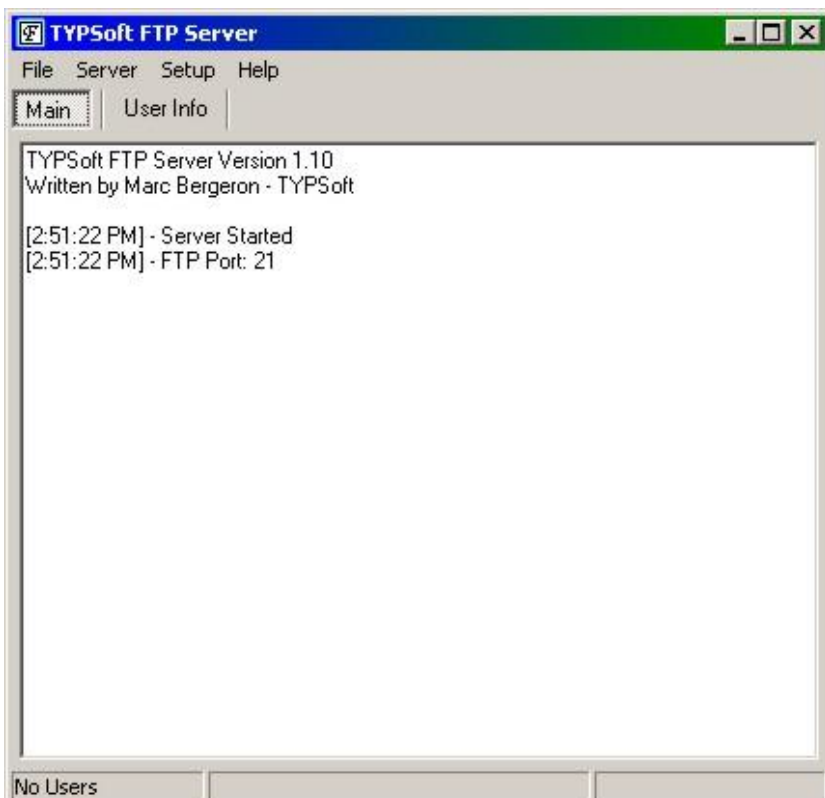
STEP 1 (Load updated firmware 6.0g onto the FTP Server)

Select a system for use as the FTP Server that can be network for connection to the Server Technology Switched CDUs.

- A. On the selected FTP Server create a folder at the root on the of the C: drive and name it "SENTRY" (e.g. **C:\SENTRY**).
- B. Using the links below, save the following files into the directory C:\SENTRY\
Binary update files for Switched units:
http://ftp.servertech.com/pub/firmware/Sentry3/Version_6/Switched_CDU_CW-xx/swcdu-v60g.bin
TYPSoft FTP Server:
http://ftp.servertech.com/pub/firmware/Sentry3/TYPSoft_FTP_Server/ftpserv-110-install.exe
- C. On the FTP Server go to the C:\SENTRY directory and run the "ftpserv-110-install.exe" to install TYPSoft FTP Server. Accept the defaults throughout the installation.
- D. Using the Start menu, or the Quick Launch icon which looks like  ...start the TYPSoft FTP Server application.
- E. Click on "Setup", then "Users".
- F. In the List of Users section, click on the default user "Anonymous" and then change the "Root Directory" from "C:\TEMP\" to "C:\SENTRY\".
- G. Next, further to the right, click on the "C:\TEMP\" in the Directory Access section. Then, below, change "C:\TEMP\" to "C:\SENTRY" and click the **Modify** button so that the screen appears like this:



H. Click the "Save" button and then the "Close" button. TYPSoft FTP Server should now be running looking like this:



STEP 2 (Setup the FTP Server to communicate with the CDUs)

You are now ready to configure the FTP Server for Ethernet network connection to the Sentry CDUs to be updated.

NOTE: You will need to know the IP addresses assigned to the CDUs to-be-updated, then give your FTP Server an address within that same range.

Following is a sample screen from a laptop being used for the FTP Server (10.1.2.139) that is logged into a Switched CDU (10.1.2.138). The CDU is being told where it needs to go (laptop) to get the file from the FTP server. Note that the example screen shot below is from a Switched unit.

Sentry Switched CDU - Windows Internet Explorer

http://10.1.2.138/main.html?3,9

User: ADMN

Access: Admin

Sentry Switched CDU

Outlet Control

Power Monitoring

Environmental Monitoring

Smart Load Shedding

Configuration

System

Network

Telnet/SSH

HTTP/SSL

Serial Ports

Towers

Input Feeds

UPS

Outlets

Shutdown

Groups

Users

FTP

SNTP/Syslog

SNMP/Thresholds

LDAP

Location:

IP Address: 10.1.2.138

Server Technology
www.servertech.com
Solutions for the Data Center Equipment Cabinet

Configuration - FTP

FTP

Configure FTP client options

Host: 10.1.2.139

Username: Anonymous

Password: ☒ Change

Directory:

Filename: swcdtu-v60g.bin

Apply Cancel Test

Configure FTP automatic update options

Automatic Updates: Disabled

Scheduled Day: Everyday

Scheduled Hour: 12 AM

Apply Cancel

Configure FTP server options

FTP Server: Enabled

Apply Cancel

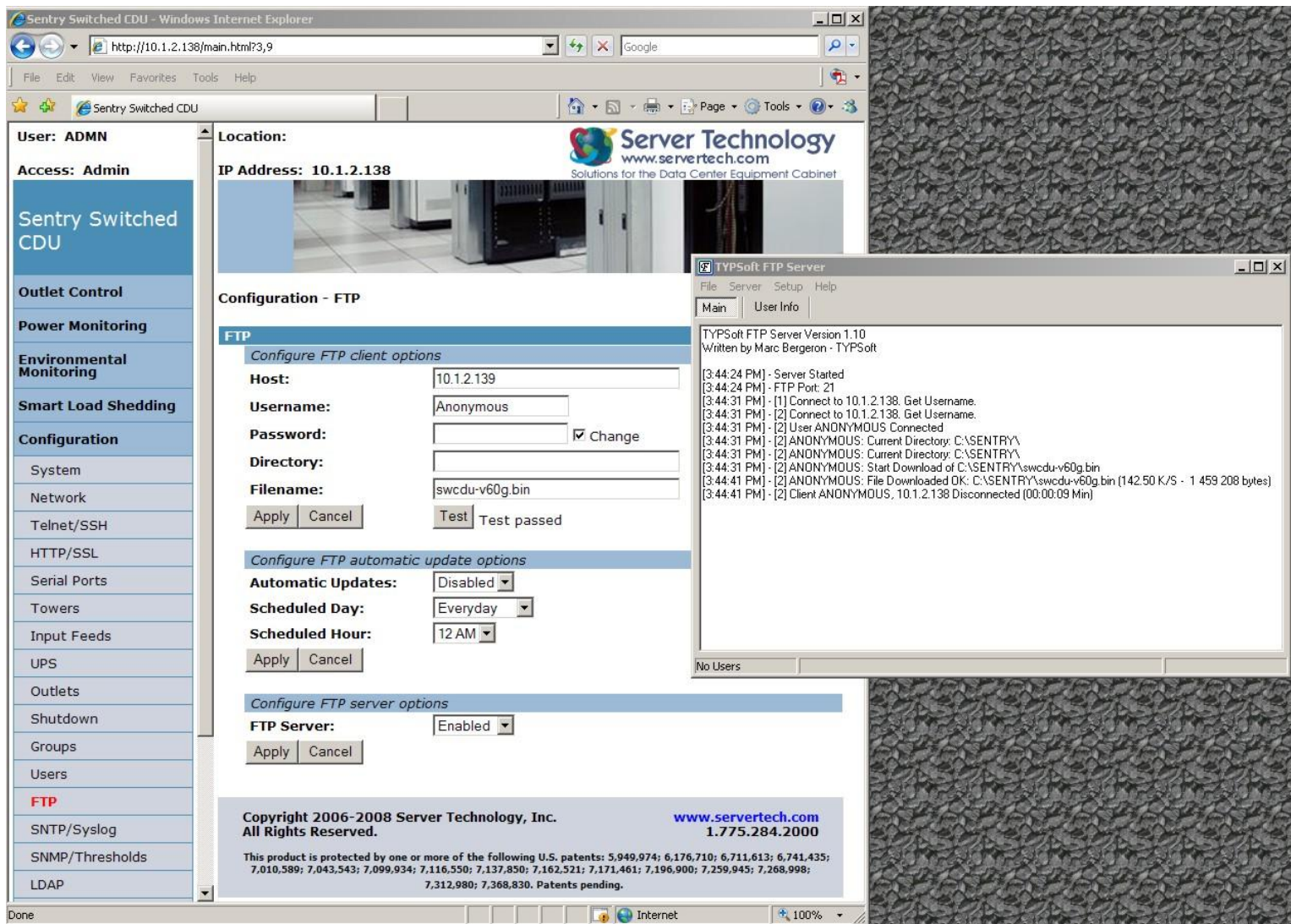
Copyright 2006-2008 Server Technology, Inc.
All Rights Reserved.

www.servertech.com
1.775.284.2000

This product is protected by one or more of the following U.S. patents: 5,949,974; 6,176,710; 6,711,613; 6,741,435; 7,010,589; 7,043,543; 7,099,934; 7,116,550; 7,137,850; 7,162,521; 7,171,461; 7,196,900; 7,259,945; 7,268,998; 7,312,980; 7,368,830. Patents pending.

STEP 3 (Configure the CDU to be updated to point to the FTP Server)

- A. Open a web session to the CDU. If HTTPS/SSL is set to be required, you may need to use "<https://xxx.xxx.xxx.xxx>" (...where xxx.xxx.xxx.xxx is the IP address of the target Sentry CDU unit).
- B. Once logged in, go to the **Configuration>FTP** page and fill in the fields as follows:
 Host: Configure this with the **IP address** that you previously assigned to your laptop.
 Username: **Anonymous**
 Password: <<<leave blank>>>
 Directory: <<<leave blank>>>
 Filename: "**swcdv-v60g.bin**" for Switched CDUs. Do not use quotes.
- C. With both the web browser Sentry session and the TYPSoft FTP Server application window in the foreground, press the **Test** button. If everything is configured correctly, about 15 seconds later you should see "Test passed", similar to this:



If "Test passed" appears, you are now ready to start the flash upgrade.

STEP 4 (Update the CDU firmware)

- A. Go to **Tools>Restart** then use the drop-down list to select "**Restart and download firmware via FTP**", then click Apply and then the OK button when it asks "Are you sure?".

Sentry Switched CDU - Windows Internet Explorer

http://10.1.2.138/main.html?4,4

User: ADMN Location: IP Address: 10.1.2.138

Access: Admin

Sentry Switched CDU

Outlet Control

Power Monitoring

Environmental Monitoring

Smart Load Shedding

Configuration

Tools

Ping

Change Password

View Log

Restart

Logout

Tools - Restart

Restart

Initiate a system restart

Action:

Apply Cancel

None

None

Restart

Restart and reset to factory defaults

Restart and reset to factory defaults, except network

Restart and download firmware via FTP

Restart and generate a new X.509 certificate

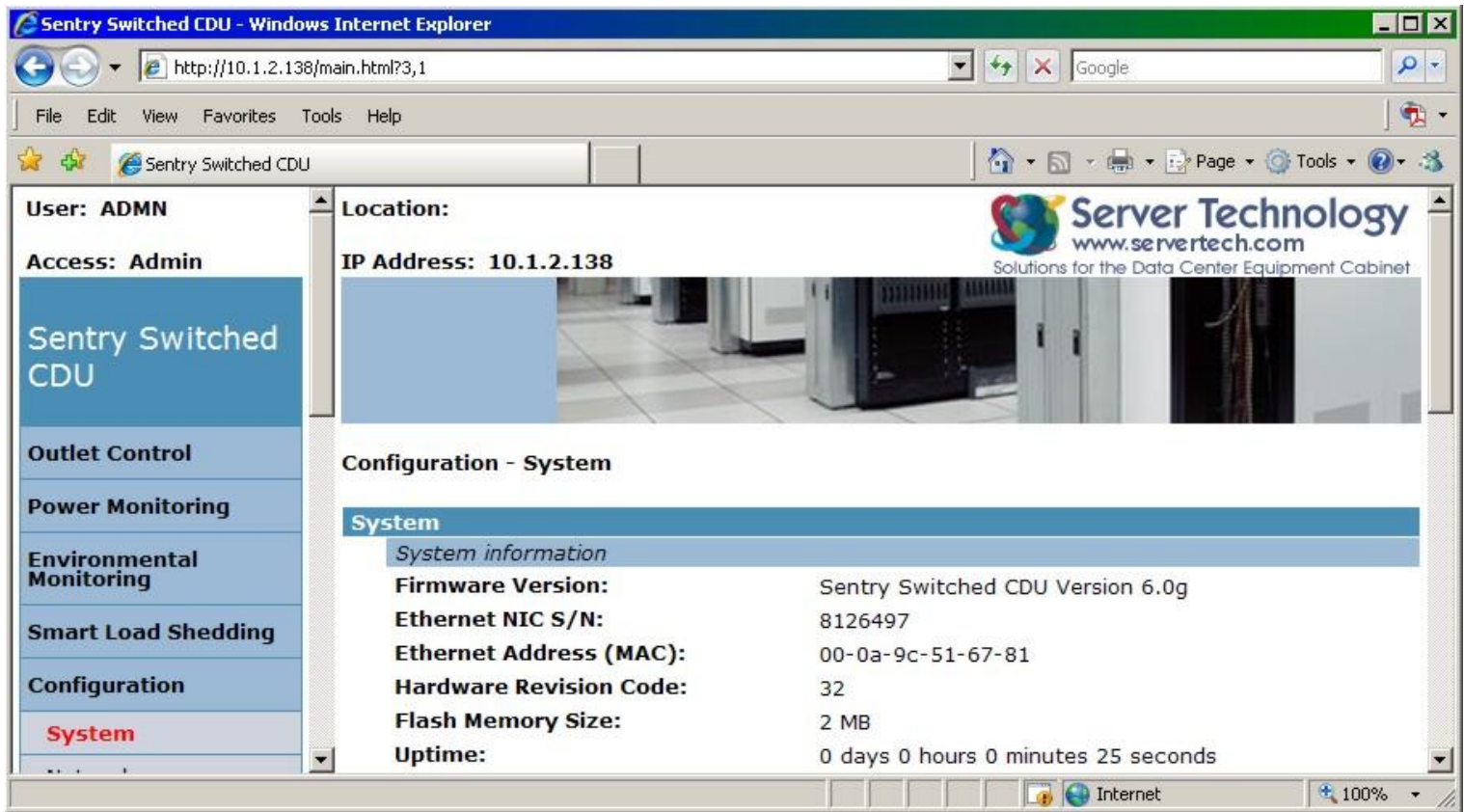
Restart and compute new SSH keys

Copyright 2006-2008 Server Technology, Inc. All Rights Reserved. www.servertech.com 1.775.284.2000

This product is protected by one or more of the following U.S. patents: 5,949,974; 6,176,710; 6,711,613; 6,741,435; 7,010,589; 7,043,543; 7,099,934; 7,116,550; 7,137,850; 7,162,521; 7,171,461; 7,196,900; 7,259,945; 7,268,998; 7,312,980; 7,368,830. Patents pending.

NOTE: It may take up to six (6) minutes for the update to take place and the system restart to complete.

- B. Login to the Sentry CDU unit again, as the Admin, and go to the **Configuration>System** page to check that the update was successful by looking at the Firmware Version and making sure that it now reads "Sentry Switched CDU Version 6.0g".



- C. Repeat Step 4 for each CDU to be updated.